


# COVID-19: What paramedics need to know!

Jason E. Buick , MSc, PhD(c), ACPf<sup>††</sup>; Sheldon Cheskes, MD<sup>††</sup>; Michael Feldman, PhD, MD<sup>†§</sup>; P. Richard Verbeek, MDCM<sup>†§</sup>; Morgan Hillier, MD, MSc<sup>†§</sup>; Yuen Chin Leong, MD, MEMed<sup>†¶</sup>; Ian R. Drennan, BSc, PhD(c), ACP<sup>†#</sup>

## INTRODUCTION

Pandemics are a rare and stressful time for health care providers with overwhelming caseloads, rapidly evolving information, and competing priorities of self-protection, while maintaining a high level of patient care. The goal of this article is to provide paramedics with the necessary information to support their clinical practice during the COVID-19 pandemic.

Two previous coronaviruses caused international responses; the severe acute respiratory syndrome (SARS-CoV-1) in 2003, and the Middle East respiratory syndrome (MERS-CoV) in 2012.<sup>1</sup> The current coronavirus, SARS-CoV-2, has become a public health emergency and global pandemic. While the terms are often used interchangeably, SARS-CoV-2 refers to the virus, and COVID-19 refers to the illness. For simplicity, we will use the term COVID-19 for both.

## TRANSMISSION

COVID-19 is highly contagious, resulting in exponential growth in the number of patients. The reproduction number ( $R_0$ ), the number of individuals who can be infected by one patient, is between 2.2 and 3.6,<sup>2,3</sup> considerably higher than seasonal influenza ( $R_0$  0.9–2.1).<sup>1</sup>

Initially, it was thought it was only transmitted through droplets produced when an infected person coughed or sneezed.<sup>1,2</sup> COVID-19 is believed to be

transmitted through droplets (> 5–10  $\mu$ m diameter) entering the body by means of the airway and mucous membranes, not through airborne particles (< 5  $\mu$ m diameter).<sup>1,2</sup> However, there is a growing body of evidence that community spread is occurring, even from asymptomatic individuals.<sup>1,4,5</sup>

## PRESENTATION

The incubation period for COVID-19 is between 1 and 14 days (average, 5 days).<sup>6</sup> The majority of adults experience mild symptoms, with only 15% experiencing severe symptoms and 5% becoming critically ill.<sup>4,7</sup> Elderly patients and those with comorbid conditions such as hypertension, diabetes, cardiovascular disease, and lung disease, are more likely to experience severe cases and death.<sup>4</sup> Fortunately, as in adults, the majority of pediatric patients present with mild or moderate symptoms, with only 6% classified as severe or critical.<sup>8</sup>

The symptoms of COVID-19 are diverse for both adults and children, and patients do not always present with classic respiratory symptoms (Table 1).<sup>9</sup> One study found that up to 55% of adults were afebrile upon presentation to hospital.<sup>7</sup>

Given the wide range of nonspecific symptoms, paramedics should have a high index of suspicion and exercise caution when a patient presents with a history suggestive of possible COVID-19, using contact/droplet or airborne precautions as required.

From the <sup>\*</sup>Institute of Health Policy, Management and Evaluation, University of Toronto, Toronto, ON; <sup>†</sup>Sunnybrook Center for Prehospital Medicine, Sunnybrook Health Sciences Center, Toronto, ON; <sup>‡</sup>Division of Emergency Medicine, Department of Family and Community Medicine, University of Toronto, Toronto, ON; <sup>§</sup>Division of Emergency Medicine, Department of Medicine, University of Toronto, Toronto, ON; <sup>¶</sup>Faculty of Medicine, University of Toronto, Toronto, ON; and the <sup>#</sup>Institute of Medical Science, University of Toronto, Toronto, ON.

**Correspondence to:** Dr. Jason Buick, Institute of Health Policy, Management and Evaluation, University of Toronto, Health Sciences Building, 155 College Street, Suite 425, Toronto, ON, Canada M5T 3M6; Email: [jason.buick@mail.utoronto.ca](mailto:jason.buick@mail.utoronto.ca); Twitter: @jason\_buick.

© Canadian Association of Emergency Physicians 2020 CJEM 2020;22(4):426–430

DOI 10.1017/cem.2020.367

This is an Open Access article, distributed under the terms of the Creative Commons Attribution licence (<http://creativecommons.org/licenses/by/4.0/>), which permits unrestricted re-use, distribution, and reproduction in any medium, provided the original work is properly cited.

**Table 1. Symptoms of COVID-19 infection<sup>9</sup>**

Adult patients	Pediatric patients
<b>Common symptoms</b>	<b>Common symptoms</b>
Cough	Cough
Fever	Fever
Shortness of breath	Throat swelling
Muscle and joint pain	
Fatigue	
<b>Less frequent symptoms</b>	<b>Less frequent symptoms</b>
Nausea, vomiting, diarrhea	Nausea, vomiting, diarrhea
Headache	Fatigue
Sore throat	Runny nose

**PREVENTION**

All patients should be screened for potential symptoms before patient contact starting with the dispatch center. Given the extent of community transmission, patients no longer need a travel history to be considered for having COVID-19.<sup>5</sup> First responders should remain diligent even after prescreening by dispatchers. Personal protective equipment (PPE) should be used based on the risk of exposure (eg., type of activity) and the transmission dynamics of the pathogen (eg., contact, droplet, aerosol).<sup>10</sup>

When no interventions are performed, paramedics providing care or who are in close proximity to the patient should wear a surgical type mask, gown, gloves, and eye protection, either goggles or a face shield. Safety glasses are not sufficient for eye protection. For aerosol generating medical procedures (AGMPs), paramedics should wear a N95 mask, eye protection, gloves, and fluid resistant gowns. PPE should be removed while driving the ambulance as long as the driver compartment is separate from the patient. This is important to limit contamination to the front of the ambulance. If there is no separation, the driving paramedic should wear a mask. Additionally, a mask should be provided to the patient as tolerated.<sup>10,11</sup>

Proper use of PPE and frequent hand sanitizing/washing is essential to prevent disease transmission in the health care setting.<sup>1</sup> In addition, surfaces should be disinfected frequently as the virus remains viable for extended periods of time on different materials, such as copper (4 hours), cardboard (24 hours), stainless steel (48 hours), and plastics (72 hours).<sup>12</sup>

**CLINICAL CONSIDERATIONS**

The majority of patients with COVID-19 will experience mild symptoms, and do not require emergency care. These patients should be isolated at home to prevent transmission. For patients who require further treatment and/or transport to hospital, paramedics, must wear appropriate PPE before patient contact or initiating care. Initially, only one paramedic should make patient contact, and perform an initial assessment to determine if additional providers are required. Unnecessary personnel should be removed from the scene to limit exposure, and should not accompany paramedics during transport to the hospital.

**Aerosol Generating Medical Procedures**

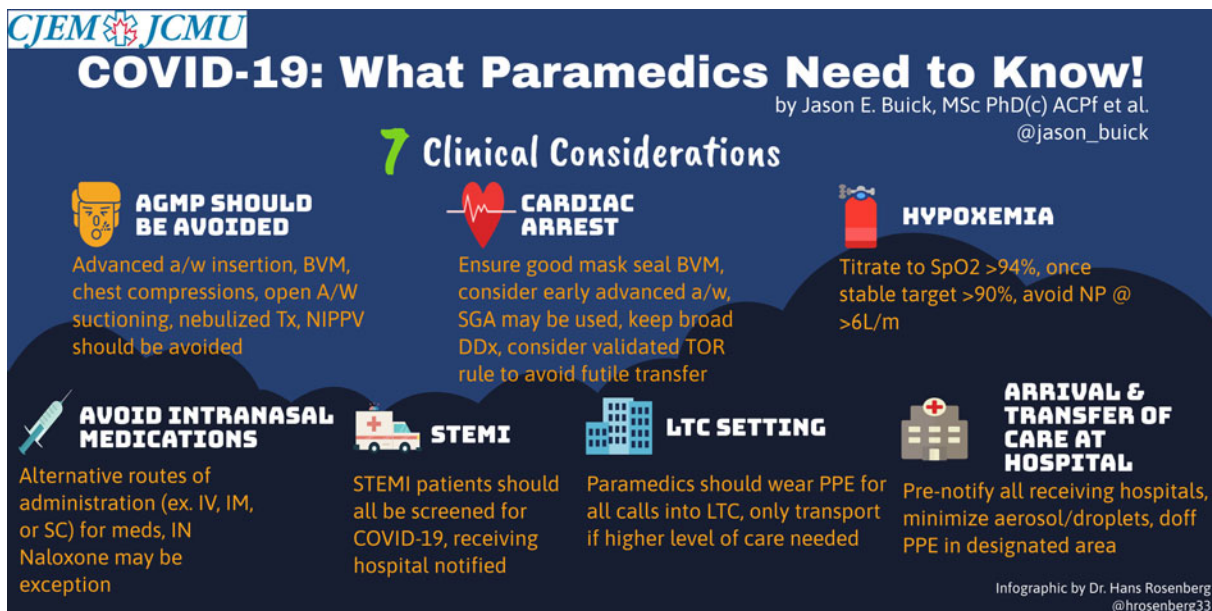
Airborne transmission is possible when AGMPs are performed. AGMPs include advanced airway insertion, bag-valve-mask (BVM) ventilations, chest compressions, open airway suctioning and tracheostomy care, nebulized treatments, and noninvasive positive pressure ventilation. These procedures should be avoided, unless absolutely necessary.<sup>9,13</sup> Paramedics should consider alternatives, such as a metered-dose inhaler or parenteral administration of medications (e.g., intramuscular epinephrine), or withholding care in less severe cases.

**Cardiac arrest**

When providing ventilations by means of BVM, paramedics should use a two-handed approach (one person holding the mask and another squeezing the bag) to ensure a good seal is being maintained.<sup>9</sup> In general, two-handed BVM should not lead to exposure of additional paramedics.

Early placement of an advanced airway should be considered. The risk of exposure during intubation may be minimized by using the most experienced and skilled paramedic, video laryngoscopy, a bougie, and pausing chest compressions. This will provide more protection to responders as postintubation ventilation (with appropriate filter and airway cuff pressure) can limit exposure to secretions.<sup>13</sup>

Supraglottic airways (SGAs) may offer an alternative to endotracheal intubation, which may limit exposure during placement. It is not known if SGAs reduce exposure or provide the same level of protection as intubation, but these devices should be considered when a good



**Figure 1.** What Paramedics Need to Know infographic.

mask seal with BVM is difficult to achieve (e.g., transportation).

There is no evidence on outcomes or specific interventions for out-of-hospital cardiac arrests related to COVID-19. Even though patients may have COVID-19, it is important to consider other pathologies of cardiac arrest. Keep a broad differential diagnosis! Paramedics should initiate resuscitation as per standard practice, and use previously validated termination of resuscitation (TOR) rules to limit transportation of non-viable patients. Application of a TOR rule will limit the time of exposure and avoid transfer of futile patients to hospital. In the event of a prolonged surge event that limits intensive care unit (ICU) bed availability, anticipate changes in your protocols that may limit the conditions under which you initiate resuscitation.

### **Hypoxemia**

Paramedics should consider slowly titrating supplemental oxygen flow rates to achieve an oxygen saturation of >94%. Then once stable, target an SpO<sub>2</sub> of 90%.<sup>9,13</sup> Oxygen flow rates >5–6 L/min are considered aerosol generating and the patient should be switched to a high concentration/low flow mask with an exhalation filter.

### **Intranasal medications**

Paramedics should use alternative routes of administration (eg., intravenous, intramuscular, or subcutaneous)

for medication administration. For opioid emergencies, if other routes are not accessible, intranasal naloxone should be prioritized over BVM ventilations. If administered appropriately, the risk for transmission is low, as it produces large droplets which fall into the nasopharynx rather than forming aerosol suspension in the air.

### **ST-elevation myocardial infarction**

All ST-elevation myocardial infarction (STEMI) patients should be screened for COVID-19. Patients should be transported to the designated percutaneous coronary intervention (PCI) center regardless of COVID-19 status, pending discussion with the interventional cardiologist. The receiving center should be notified early for all positive patients to ensure staff are adequately prepared. Systems should attempt to minimize “false positive” STEMI activations. Patients may be redirected to the emergency department first, as COVID-19 has been associated with myocarditis, which may mimic STEMI on electrocardiogram. Finally, should the PCI lab and medical system become overwhelmed, consideration of thrombolytic therapy may occur in some areas.<sup>14</sup>

### **Long-term care setting**

Paramedics should wear PPE for all calls into long-term care (LTC) settings regardless of the patient’s complaint. Patients in LTC settings can have atypical symptoms of

COVID-19 infection or be asymptomatic.<sup>15</sup> It is important to consider that staff can also be contagious.

Patients should only be transported to hospital when there is a need for a higher level of care than what the LTC setting can provide, not for the purpose of COVID-19 testing. Facilities should contact their local public health unit for guidance or consider using community paramedics to perform testing.<sup>16</sup>

Patients with mild symptoms should not be transported to hospital. However, this can be problematic if patients require isolation or a negative pressure room. If unsure, paramedics should contact online medical control for advice. Whether or not to transport more severely ill patients depends on local ICU capacity and COVID-19 disease activity. These decisions should be discussed at a local level. Transport and treatment decisions should be patient-centered and focused around goals of care. Ensure you have the most up-to-date version of the patients' advanced directives, as their wishes might have changed with the pandemic.<sup>17</sup> Paramedics should consider the patient's and/or substitute decision-makers request not to transport the patient to hospital.

### **Arrival and transfer of care at hospital**

Paramedics should prenotify all receiving hospitals if a patient is suspected of having COVID-19. Resuscitation and other treatment should be continued in the ambulance until directed by receiving staff. Paramedics must be mindful when passing other stretcher patients, colleagues, and other health care providers who are not wearing PPE. Only providers with appropriate PPE should maneuver the stretcher.

While moving a patient between the ambulance and the resuscitation room, steps must be taken to minimize or eliminate aerosol and respiratory droplets. The patient can continue to receive supplemental oxygen and chest compressions, but manual ventilations should be withheld unless the patient has been intubated.

After the call, paramedics should remove their PPE in a designated area under observation of a trained observer. This ensures that proper procedures are being followed to limit any cross-contamination.

### **CONCLUSIONS**

The COVID-19 pandemic is a rapidly changing global health crisis. The unique challenges of the prehospital setting are magnified in times like this, and we cannot

automatically extrapolate hospital care to the unpredictable prehospital environment. Given the rapidly evolving state of affairs related to COVID-19, and the difficulty paramedics have gaining access to up-to-date information, this article provides guidance to paramedics on the best approach to COVID-19 patients in the prehospital setting.

### **DISCLAIMER**

The views and opinions expressed in this commentary are those of the authors and do not necessarily reflect their organizations, the Canadian Journal of Emergency Medicine, or the Canadian Association of Emergency Physicians. There are variations in protocols, and paramedics should follow their own services, local, national and international policies, procedures, recommendations, and guidelines.

**Acknowledgment:** The authors thank Hans Rosenberg, MD, for creating the infographic.

**Keywords:** Emergency medical services, paramedic, prehospital, SARS-CoV-2

**Competing interests:** None declared.

### **REFERENCES**

1. Yee J, Unger L, Zdravec F, et al. Novel coronavirus 2019 (COVID-19): emergence and implications for emergency care. *J Am Coll Emerg Physicians Open* 2020:1–7.
2. Li Q, Guan X, Wu P, et al. Early transmission dynamics in Wuhan, China, of novel coronavirus-infected pneumonia. *N Engl J Med* 2020;382:1199–207.
3. Zhao S, Lin Q, Ran J, et al. Preliminary estimation of the basic reproduction number of novel coronavirus (2019-nCoV) in China, from 2019 to 2020: a data-driven analysis in the early phase of the outbreak. *Int J Infect Dis* 2020;92:214–7.
4. Wu Z, McGoogan JM. Characteristics of and important lessons from the coronavirus disease 2019 (COVID-19) outbreak in China: summary of a report of 72314 cases from the Chinese Center for Disease Control and Prevention. *JAMA* 2020. doi: 10.1001/jama.2020.2648.
5. Government of Canada. Epidemiological summary of COVID-19 cases in Canada. 2020. Available at: <https://www.canada.ca/en/public-health/services/diseases/2019-novel-coronavirus-infection/health-professionals/epidemiological-summary-covid-19-cases.html> (accessed March 28, 2020).
6. Lauer SA, Grantz KH, Bi Q, et al. The incubation period of coronavirus disease 2019 (COVID-19) from publicly reported confirmed cases: estimation and application. *Ann Intern Med* 2020. doi: 10.7326/M20-0504.

7. Guan W, Ni Z, Hu Y, et al. Clinical characteristics of coronavirus disease 2019 in China. *N Engl J Med* 2020. doi: 10.1056/NEJMoa2002032.
8. Dong Y, Mo X, Hu Y, et al. Epidemiological characteristics of 2143 pediatric patients with 2019 coronavirus disease in China. *Pediatrics* 2020. doi: 10.1542/peds.2020-0702.
9. World Health Organization. Clinical management of severe acute respiratory infection when COVID-19 is suspected: interim guidance, 19 March 2020. 2020. Available at: [https://www.who.int/publications-detail/clinical-management-of-severe-acute-respiratory-infection-when-novel-coronavirus-\(ncov\)-infection-is-suspected](https://www.who.int/publications-detail/clinical-management-of-severe-acute-respiratory-infection-when-novel-coronavirus-(ncov)-infection-is-suspected) (accessed April 15, 2020).
10. World Health Organization. Rational use of personal protective equipment (PPE) for coronavirus disease (COVID-19): interim guidance, 19 March 2020. 2020. Available at: <https://apps.who.int/iris/handle/10665/331498> (accessed April 15, 2020).
11. Government of Canada. Coronavirus disease (COVID-19): for health professionals. 2020. Available at: <https://www.canada.ca/en/public-health/services/diseases/2019-novel-coronavirus-infection/health-professionals.html> (accessed March 28, 2020).
12. van Doremalen N, Bushmaker T, Morris DH, et al. Aerosol and surface stability of SARS-CoV-2 as compared with SARS-CoV-1. *N Engl J Med* 2020. doi: 10.1056/NEJMc2004973.
13. Murthy S, Gomersall CD, Fowler RA. Care for critically ill patients with COVID-19. *JAMA* 2020. doi: 10.1001/jama.2020.3633.
14. Wood DA, Sathananthan J, Gin K, et al. Precautions and procedures for coronary and structural cardiac interventions during the COVID-19 pandemic: guidance from Canadian Association of Interventional Cardiology. *Can J Cardiol* 2020. doi: 10.1016/j.cjca.2020.03.027.
15. Kimball A, Hatfield KM, Arons M, et al. Asymptomatic and presymptomatic SARS-CoV-2 infections in residents of a long-term care skilled nursing facility - King County, Washington, March 2020. *MMWR Morb Mortal Wkly Rep* 2020;69:377-81.
16. Glauser W. Proposed protocol to keep COVID-19 out of hospitals. *CMAJ* 2020;192:E264-5.
17. Curtis JR, Kross EK, Stapleton RD. The importance of addressing advance care planning and decisions about do-not-resuscitate orders during novel coronavirus 2019 (COVID-19). *JAMA* 2020. doi: 10.1001/jama.2020.4894.