



Nosemosis negatively affects honeybee survival: experimental and meta-analytic evidence

Research Article

Cite this article: Ostap-Chec M, Cait J, Scott RW, Arct A, Moroń D, Rapacz M, Miler K (2025). Nosemosis negatively affects honeybee survival: experimental and meta-analytic evidence. *Parasitology* 1–13. <https://doi.org/10.1017/S0031182024001446>

Received: 6 June 2024

Revised: 17 October 2024

Accepted: 20 October 2024

Keywords:

Apis mellifera; honeybee; meta-analysis; mortality; *Nosema ceranae*; nosemosis



Corresponding authors:

Monika Ostap-Chec;

Email: ostap.monika@gmail.com;

Krzysztof Miler;

Email: miler@isez.pan.krakow.pl

Monika Ostap-Chec^{1,2} , Jessica Cait³, R. Wilder Scott^{4,5}, Aneta Arct⁶, Dawid Moroń⁶, Marcin Rapacz⁷ and Krzysztof Miler⁶ 

¹Doctoral School of Exact and Natural Sciences, Jagiellonian University, Kraków, Poland; ²Faculty of Biology, Institute of Environmental Sciences, Jagiellonian University, Kraków, Poland; ³Department of Integrative Biology, College of Biological Science, University of Guelph, Guelph, ON, Canada; ⁴Holland Bone and Joint Program, Biological Sciences, Sunnybrook Research Institute, Toronto, ON, Canada; ⁵Department of Laboratory Medicine & Pathobiology, University of Toronto, Toronto, ON, Canada; ⁶Institute of Systematics and Evolution of Animals of the Polish Academy of Sciences, Kraków, Poland and ⁷Department of Plant Physiology, Breeding and Seed Science, Faculty of Agriculture and Economics, University of Agriculture in Kraków, Kraków, Poland

Abstract

Nosemosis, caused by microsporidian parasites of the genus *Nosema*, is considered a significant health concern for insect pollinators, including the economically important honeybee (*Apis mellifera*). Despite its acknowledged importance, the impact of this disease on honeybee survivorship remains unclear. Here, a standard laboratory cage trial was used to compare mortality rates between healthy and *Nosema*-infected honeybees. Additionally, a systematic review and meta-analysis of existing literature were conducted to explore how nose-mosis contributes to increased mortality in honeybees tested under standard conditions. The review and meta-analysis included 50 studies that reported relevant experiments involving healthy and *Nosema*-infected individuals. Studies lacking survivorship curves or information on potential moderators, such as spore inoculation dose, age of inoculated bees, or factors that may impact energy expenditure, were excluded. Both the experimental results and meta-analysis revealed a consistent, robust effect of infection, indicating a threefold increase in mortality among the infected group of honeybee workers (hazard ratio for infected individuals = 3.16 [1.97–5.07] and 2.99 [2.36–3.79] in the experiment and meta-analysis, respectively). However, the meta-analysis also indicated high heterogeneity in the effect magnitude, which was not explained by our moderators. Furthermore, there was a serious risk of bias within studies and potential publication bias across studies. The findings underscore knowledge gaps in the literature. It is stressed that laboratory cage trials should be viewed as an initial step in evaluating the impact of *Nosema* on mortality and that complementary field and apiary studies are essential for identifying effective treatments to preserve honeybee populations.

Introduction

Numerous insects in most climatic zones play important roles in pollination (Klein *et al.*, 2007; Garibaldi *et al.*, 2013). Among these, the honeybee (*Apis mellifera*) can be considered a key pollinator for many crops and wild plants due to the high efficiency of its workers in collecting and transferring pollen between flowers, which is essential for fertilization and subsequent fruit and seed production (Abrol, 2012). The significance of honeybees is also underscored by their large colonies that enable the recruitment of high numbers of workers for pollination (Abrol, 2012). This makes honeybees particularly valuable for commercial agriculture, where large-scale pollination is often key to ensuring high yields and the quality of crops (Morse and Calderone, 2000; Aizen and Harder, 2009). However, within the agricultural context, honeybees, and consequently beekeepers, face a wide range of significant issues (Genersch, 2010). These encompass challenges such as exposure to pesticides and chemicals, along with susceptibility to diseases and parasites (Potts *et al.*, 2010; Goulson *et al.*, 2015).

Nosemosis is one of the most prevalent and widespread diseases in honeybees, often regarded as a significant threat to their health and well-being (Moritz *et al.*, 2010; Hristov *et al.*, 2020). This disease is caused by microsporidian parasites of the genus *Nosema*, which includes two species that infect honeybees: *N. apis* and *N. ceranae*. Although *Nosema* was recently reclassified as *Vairimorpha* (Tokarev *et al.*, 2020), this revision has faced criticism (Bartolomé *et al.*, 2024). To maintain clarity and consistency with the existing literature, we continue to refer to the genus as *Nosema*. Both parasites complete their life cycle within the honeybee midgut cells. Upon ingestion, spores reach the midgut, germinate, and inject their contents into host cells. Following phagocytosis, the infected cells are destroyed and release new spores (Gisder *et al.*, 2011; Huang and Solter, 2013), which ultimately result in gut lesions (reviewed in (Goblirsch, 2018)). Consequently, affected bees become weakened and lethargic, which compromises the colony's foraging capacity (Koch *et al.*, 2017). The spores can infect other digestive tract cells or be excreted, contaminating nesting environments and floral

© The Author(s), 2024. Published by Cambridge University Press. This is an Open Access article, distributed under the terms of the Creative Commons Attribution licence (<http://creativecommons.org/licenses/by/4.0/>), which permits unrestricted re-use, distribution and reproduction, provided the original article is properly cited.

resources. The fecal-oral transmission facilitates the easy and rapid spread of these parasites to new habitats and hosts (Fürst *et al.*, 2014). Therefore, while *N. apis* was originally confined to Europe and North America, and *N. ceranae* to South East Asia, both species are now distributed worldwide (Paxton *et al.*, 2007; Chen *et al.*, 2008; Grupe and Quandt, 2020). The exacerbation of this spread can be at least in part attributed to the global trade of honeybee colonies and related products (Higes *et al.*, 2008b; Mutinelli, 2011).

Among the two agents responsible for nosemosis, *N. ceranae* has garnered significantly more attention compared to *N. apis*. *N. ceranae* was previously known as a parasite of *Apis ceranae* (Fries *et al.*, 1996) and *A. mellifera* (Klee *et al.*, 2007), but it has recently been confirmed to also infect other bee species (Martín-Hernández *et al.*, 2018; Grupe and Quandt, 2020). However, its infectivity varies depending on geographical origin and host species (Chaimanee *et al.*, 2013; Müller *et al.*, 2019; Porrini *et al.*, 2020; Van Der Steen *et al.*, 2022). *N. ceranae* appears to have higher biotic potential at different temperatures compared with *N. apis* (Martín-Hernández *et al.*, 2009). The spread of *N. ceranae* is often associated with worker and colony mortality, including colony collapse syndrome (e.g. in Spain, (Higes *et al.*, 2008a, 2009, 2010; Botías *et al.*, 2013), but conflicting research suggests that nosemosis may not significantly contribute to beekeepers' losses (e.g. Cox-Foster *et al.*, 2007; Gisder *et al.*, 2010; Fernández *et al.*, 2012; Pohorecka *et al.*, 2014; Kielmanowicz *et al.*, 2015; Schüler *et al.*, 2023). Thus, the precise impact of *N. ceranae* infection on honeybee mortality remains unclear and requires further investigation.

Laboratory cage trials, a widely used standard method, involve the confinement of control and *Nosema*-infected honeybees in cages and strictly controlled conditions (Fries *et al.*, 2013). Despite the frequent use of this method, primarily in the search for an effective treatment against the parasite (e.g. Van Den Heever *et al.*, 2016; Borges *et al.*, 2020; Chaimanee *et al.*, 2021; Naree *et al.*, 2021b), it has never been formally validated in the context of *Nosema* infection. Fries *et al.* (2013) compiled a list of commonly used methods, but their real-world applicability has never been thoroughly investigated. The described cage trial methods are general and leave researchers with a broad range of choices regarding specific conditions. Consequently, the trials are often poorly standardized across studies, leading to highly varied infection effects. For example, concerning mortality, some studies show a powerful effect of *N. ceranae* infection (e.g. Van der Zee *et al.*, 2014; Naree *et al.*, 2021a), while others indicate no discernible effect (e.g. Retschnig *et al.*, 2014a; Huang *et al.*, 2015; Hosaka *et al.*, 2021; Duguet *et al.*, 2022). Such discrepancies may stem from different experimental setups that involve, for example, various levels of artificial inoculation or ages of the hosts, both of which can affect nosemosis development (e.g. Berbec *et al.*, 2022; Jabal-Uriel *et al.*, 2022). Additionally, considering that nosemosis operates through energy-related processes, such as hosts' starvation or failed thermoregulation due to impaired digestive system function (Mayack and Naug, 2009; Martín-Hernández *et al.*, 2011; Vidau *et al.*, 2014), assessing infection effects in honeybees maintained in laboratory cages with minimal energy expenditure, stable temperature, and *ad libitum* access to food might be suboptimal methodologically. Hence it is not clear how justified the use of this method is in *Nosema*-related research.

In this study, an experiment was conducted to compare mortality rates between healthy bees and those infected with *N. ceranae*, using a laboratory cage trial setup. Furthermore, a systematic review and meta-analysis of existing literature were performed to explore the impact of *N. ceranae* infection on mortality among honeybee workers in similar experimental setups. The primary

objective was to assess the effect of nosemosis on honeybee survivorship to evaluate the suitability of mortality assessment in caged honeybees as a method. It was hypothesized that, generally, *N. ceranae* infection would lead to a significant decrease in honeybee survivorship. However, it was also hypothesized that the magnitude of this effect would depend on mediating factors that often vary between studies, such as the spore dosage used for inoculation or the age of the experimentally inoculated honeybees. Incubation temperature and food supplementation were included as additional factors that may impact energy expenditure and serve as potential mediators of the effect of infection on mortality. All these factors are likely to influence the development and course of nosemosis (Goblirsch, 2018).

Materials and methods

Survivorship experiment

Preparation of spores for infection and their genetic identification

The spore suspension for experimental infection was freshly prepared. Utilizing a stock population of infected honeybees, the digestive tract of several individuals was homogenized with a micro-pestle and suspended in distilled water. To isolate spores, the suspension underwent centrifugation (Frontier 5306, Ohaus, Switzerland) for 5 min at 2000 G, repeated three times, with each round involving the replacement of the supernatant with fresh distilled water. Subsequently, the supernatant was substituted with a 1 M sucrose solution, and the spore concentration was assessed using a Bürker hemocytometer under a Leica DMLB light microscope equipped with phase contrast (PCM) and a digital camera. Achieving a final concentration of 100 000 spores per 10 μ L involved appropriate dilution of the infection solution with 1 M sucrose solution. This dose was subsequently used for individual infection in the experiment (a typical dose used to ensure infection (Fries *et al.*, 2013)). To verify the identity of *N. ceranae* spores, PCR was employed following the protocol outlined by Berbec *et al.* (2022). Briefly, 50 μ L of the spore suspension was incubated in TNES buffer (100 mM Tris-HCl pH 8.0, 5 mM EDTA, 0.3% SDS, 200 mM NaCl) with 8 μ L of proteinase K (10 mg mL⁻¹) for 2 h at 56°C with shaking. Following centrifugation, DNA from the supernatant was precipitated by adding an equal volume of 100% isopropanol, washed twice in 70% ethanol, and resuspended in 50 μ L of nuclease-free water. PCR amplification, using species-specific primers complementary to the rRNA genes of *Nosema* species and a PCR Mix Plus kit containing PCR anti-inhibitors (A&A Biotechnology), was carried out under the following conditions: 94°C for 3 min for initial denaturation and 35 cycles (94°C for 30 s, 52°C for 30 s, and 72°C for 30 s). Primers were employed following Chen *et al.* (2008). The resulting amplification products were analysed through gel electrophoresis to confirm the exclusive presence of *N. ceranae*.

Experimental procedure

We obtained newly emerged worker honeybees (*Apis mellifera carnica*) from two unrelated and queenright colonies with naturally inseminated queens. The selected colonies were in overall good condition, having undergone treatment with oxalic acid against *Varroa destructor* in early spring. Additionally, before the experiment, they were confirmed to be *Nosema*-free through spore count assessment in several randomly collected foragers using hemocytometry. For the experiment, we obtained worker bees by selecting a single bee-free frame with capped brood from each colony and placing it in an incubator (KB53, Binder, Germany) at 32°C overnight. The emerged bees were used for individual feeding in the laboratory. About 120 individuals were

placed on Petri dishes (30 bees per group and colony) and left for approximately 1 h to increase their feeding motivation. Following this, a droplet of food was provided to each bee. In the experiment, individuals in the infected groups (one from each colony) received a 10 μ L drop of a 1 M sucrose solution containing 100 000 spores of *N. ceranae*, while individuals in the control groups (another from each colony) received a 10 μ L drop of a 1 M sucrose solution without spores. The bees were monitored for 3 h, and any bee that consumed the food was immediately transferred to the appropriate cage. Bees that failed to consume the provided food were excluded. Ultimately, we achieved a final count of 20 bees in each cage. The cages were provided with *ad libitum* water and gravity feeders with 1 M sucrose solution and were placed in an incubator (KB400, Binder, Germany) at 34°C. Water and food were renewed every morning in each cage. The mortality assessment lasted for 38 days, continuing until the death of all individuals, and was performed blind (cages were coded). We refrained from counting weakened or lethargic individuals as dead, leaving them in their cages. All dead individuals were frozen and later analysed to confirm their infection status (control vs infected).

Analysis of experimental samples

The level of infection in honeybees after the survivorship experiment was examined using hemocytometry. The digestive tract of each frozen honeybee was homogenized using micro-pestle in 300 μ L distilled water. The spores were counted in a haemocytometer, analogically to the preparation of spores for infection. The contents of 5 small squares (volume: 0.00125 μ L) were counted. If the number of spores counted per sample was less than 10, the contents of 5 large squares (volume: 0.02 μ L) were counted. To determine the total number of spores per individual we used the following formula: number of spores per individual = number of spores per sample \times 300 μ L/total solution volume of sample. We analysed 40 control and 39 infected honeybees in total (1 infected sample was misplaced).

Statistical analysis

To analyse the survivorship data, we used the Cox mixed-effect regression with a fixed factor of the group and random factor of the colony in R (coxme, survival, and survminer packages) and visualized the results using Kaplan-Meier curves (Kassambara *et al.*, 2021; Therneau, 2022, 2023). We chose Cox mixed-effect regression for our survival analysis to account for random effects and estimate hazard ratios in the control and infected individuals.

Systematic review and meta-analysis

We followed the Preferred Reporting Items for Systematic Reviews and Meta-Analyses (PRISMA) guidelines (Moher *et al.*, 2015). The review and its protocol have not been pre-registered.

Eligibility criteria

We first prepared a list of eligibility criteria for studies to be included in the systematic review and meta-analysis: (i) in English, (ii) with the use of workers of the honeybee (*Apis mellifera*), (iii) comprising a laboratory experiment with a treatment group, i.e. workers exposed to *N. ceranae* spores, and a control group, i.e. workers exposed to no *Nosema* treatment, and (iv) reporting a measure of mortality in the form of a survivorship curve.

Data sources and search

We completed an electronic search of documents on 31 October 2022. For this, we used Web of Science™ and the Scopus databases. Our search used the phrase 'nosema mortality apis' in

the topic, as well as a forward search (i.e. documents citing one or more works on the list) refined by the same phrase in the topic. References were de-duplicated using Mendeley. The screening was conducted in two phases. First, we screened the documents for potential inclusion based on their titles and abstracts. Second, we retrieved the full texts of potentially eligible documents for further reading. This action was done independently by two investigators and the full texts retrieved by just one or both were used.

Extraction of study details and study exclusion

From the selected studies, we extracted the following types of data: (i) inoculation dose (spores per individual), (ii) age of the inoculated workers, (iii) food provided to the workers (plain sucrose or with supplements), (iv) the number of individuals per cage as well as the number of replicates and the resulting group size (N), (v) days of mortality assessment (i.e. duration of the survivorship analysis), and (vi) incubation temperature. Further, we noted (vii) the inoculation method (individual or collective) as a factor likely to compromise the accuracy of the above-mentioned data type (i) and, as such, a potential methodological mediator of the effect of infection on mortality. This action was completed by one investigator. Studies were excluded if (i) survivorship figures were unreadable, (ii) infection dose or method was not specified, (iii) group size was not reported, (iv) *Nosema* spores used were of mixed species, (v) worker age was unknown. There was also one case in which the survivorship was reported for only 24 h and another case in which the results were already reported in a different publication (duplicate results). Both these works were excluded. For the full list of references containing the studies excluded during the second phase of screening see Appendix A.

Among the included studies, some did not specify the number of replicates (4 studies) or incubation temperature (1 study). In these cases, we noted the number of replicates as 1 and the temperature as 33°C (the median from the other studies). Further, some works used multiple *Nosema* populations with different geographic origins (1 study) and multiple inoculation doses (3 studies), but with a single control group of workers. Thus, a single infected group of workers had to be chosen. In the case of multiple *Nosema* populations, we selected the group infected by spores from a population corresponding geographically to the honeybee population. In the case of multiple inoculation doses, we selected the group with the lowest inoculation dose as studies that utilize low doses are rare.

Risk of bias

The risk of bias was assessed by two investigators independently, with disagreements resolved by consensus, using a modified SYRCLE tool (Hooijmans *et al.*, 2014) and visualized with a summary plot in R using the robvis package (McGuinness, 2019). We used the following assessment categories: (1) whether baseline characteristics of animals allocated to the control and infected groups were likely similar (low bias if were similar, high bias if were not similar, unclear if there were differentiating factors of unknown effect), (2) whether housing conditions in the incubator were randomized (low if cage positions were switched, high if cages were stationary, unclear if randomization was not mentioned), (3) whether investigators assessing mortality were blind to the group identity of animals (low bias if were blind, high bias if were not blind, unclear if blinding was not mentioned), (4) whether the contamination was measured and reported (low bias if was measured and reported, high bias if was not measured or not reported, unclear if was not mentioned), (5) whether there was any commercial funding for the study (low bias if none, high bias if funded by industry, unclear if was not mentioned). These

assessment categories had the highest relevance in the context of our systematic review and meta-analysis.

Data extraction for survivorship

To assess worker mortality in the selected studies, we computed hazard ratios (HRs) by reconstructing Kaplan-Meier curves from figures included in the papers using a Web Plot Digitizer (Rohatgi, 2022). This action was performed first by one investigator, and then checked for completeness and accuracy by another investigator, with corrections applied if needed by consensus. Curve construction, HRs, and confidence interval calculations were performed *via* methods and R script from Guyot *et al.* (2012).

Meta-analysis

Analyses were conducted in R using the random-effects meta-analysis function (*rma*) in the *metafor* package (Viechtbauer, 2010). Data are reported such that increased death in infected groups resulted in $HR > 1$.

Publication bias

Publication bias, the failure to publish null results from small studies, was assessed visually by examining the degree of effect asymmetry in the funnel plot (standard error plotted against HRs, Appendix B) and was evaluated statistically *via* the rank correlation test.

Exploration of data heterogeneity

Heterogeneity was assessed using the Q and I^2 statistics. To explore potential causes of data heterogeneity, we conducted meta-regressions. These regressions included inoculation dose, inoculation age of workers, and incubation temperature as continuous moderators, and food supplementation (sucrose or supplement) and inoculation method (individual or collective) as categorical moderators in the random-effects model.

Quality of evidence

The strength of the body of evidence was assessed by one investigator using the Grading of Recommendations, Assessment, Development, and Evaluation (GRADE) guidelines (Guyatt *et al.*, 2011). The quality of evidence was based on the study design and decreased for risk of bias, publication bias, inconsistencies, indirectness, or imprecision in the included studies as well as increased for the size of the effect or dose-response relationship.

Results

Survivorship experiment

Cox regression showed a significant effect of the infection (control vs infected group of workers, $z = 4.77$, $P < 0.001$). The hazard ratio for the group infected with *N. ceranae* spores was 3.16 [1.97–5.07] (Fig. 1), indicating that the risk of death in infected bees was three times higher than in healthy bees. The infected group had high infection levels (average number of spores per individual: 18 536 634, 39 individuals in total) with 8 individuals that had no detectable spores. In the control group, we found 5 *Nosema*-contaminated samples (range: 30 000–165 000 spores per individual, 40 individuals in total).

Systematic review and meta-analysis

Study characteristics

Our search yielded 1599 documents in total (273 from Web of Science™ and 1326 from Scopus). After de-duplication ($n = 314$

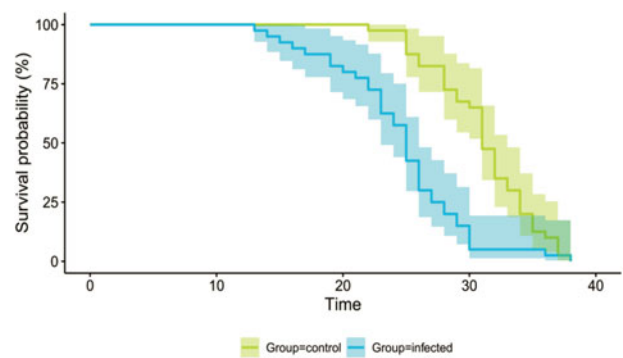


Figure 1. Kaplan-Meier survival curves for the control and infected groups of workers. The two groups differ significantly in survival. Shading indicates 95% confidence intervals.

duplicates) and removal of patents ($n = 1$) 1284 documents were screened for potential inclusion based on their titles and abstracts. This action yielded a total of 123 publications. Upon reading the full texts of the selected 123 publications, we were able to identify 52 eligible studies. During data extraction for survivorship, we excluded 1 additional article (containing 2 studies that used separate groups of animals) because no mortality occurred in the control groups for over 2 weeks, which made resulting hazard ratios improbably large and thus unusable. By this action, the number of studies included in the meta-analysis decreased to 50 from 44 publications (Fig. 2).

Among the included studies (Table 1), the majority (70%) used a plain sucrose diet, while 30% of the studies included diet supplementation. Most of these supplements involved a protein source, with 9 studies using commercially available protein patties such as Provita™Bee, Pro Bee, or MegaBee, 5 studies using hand-made pollen paste or beebread and 1 study using Apifonda powdered sugar. Similarly, most studies implemented individual (82%), not collective spore feeding method (18%). Freshly emerged, one-day-old workers were most often used (in 38% of studies) and an inoculation dose of 100 000 spores per individual was most often implemented (in 42% of studies). In the majority of works included in the meta-analysis, the mortality assessment lasted for longer than 2 weeks (70%), and the workers undergoing assessment were most frequently kept at 33 or 34°C (in 58% of studies).

Risk of bias

Overall, the risk of bias was serious (Fig. 3). Baseline characteristics of animals participating in the studies were mostly similar between groups, except for a few studies in which the control and infected groups were kept in separate housing incubators. Randomization of the position of cages within the housing incubator was applied in only one study, thanks to which it avoided possible effects related to the position of a cage in the incubator. Notably, not a single study mentioned any form of blinding applied during the mortality assessment. Considering that only one study listed specific criteria for counting an individual as dead, this made the omission of blinding quite conspicuous and created space for investigator bias during mortality assessment. Several studies failed to control the contamination of the control groups and infection levels in the artificially infected groups. There was no commercial funding in any of the studies.

Meta-analysis

A random-effects meta-analysis of the hazard ratios (HRs) showed a significant effect of infection with *N. ceranae* spores ($HR = 2.99$ [2.36–3.79]) (Fig. 4), indicating that infected bees

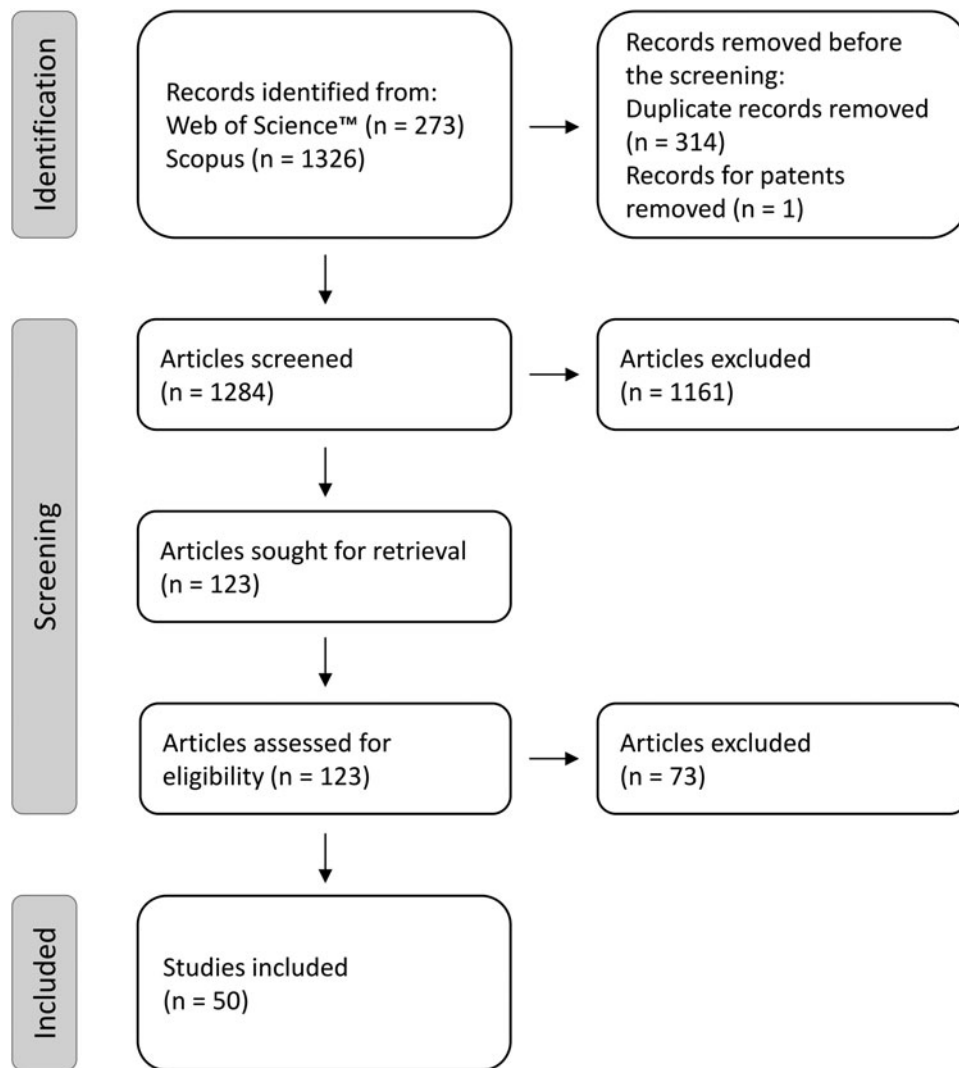


Figure 2. Preferred Reporting Items for Systematic Reviews and Meta-Analyses (PRISMA) flow diagram.

had nearly three times higher risk of death compared to healthy bees. There was high heterogeneity ($Q = 647.32$, $df = 49$, $P < 0.0001$; $I^2 = 94.44\%$).

Publication bias

Visual inspection of the funnel plot and the rank correlation test indicated the presence of publication bias ($\tau = 0.223$, $P = 0.022$) (Appendix B).

Exploration of data heterogeneity

Included moderators did not significantly explain HR magnitudes ($F_{5,44} = 1.812$, $P = 0.130$, $R^2 = 10.92\%$). A trend emerged demonstrating that HRs increased with increasing inoculation doses ($F_{1,44} = 3.650$, $P = 0.063$). Another trend indicated a positive relationship between the increased age of workers at inoculation and larger HRs ($F_{1,44} = 3.800$, $P = 0.058$).

Quality of evidence

All studies included in the systematic review and meta-analysis were considered randomized trials. The overall quality of evidence was high (Table 2). Even with a serious risk of bias, likely publication bias, and serious inconsistencies indicated by high heterogeneity, the included studies had no serious indirectness or imprecision. Moreover, the detected effect was large and there was a trend towards dose response.

Discussion

Both our experiment and meta-analysis indicated a consistent and strong impact of infection, with mortality increasing about three-fold in the group of honeybees infected with *N. ceranae* compared to uninfected individuals. Importantly, we found no evidence of the incubation temperature, food supplementation, or inoculation method influencing the magnitude of the mortality effect. While trends suggested higher infection effects in studies where honeybees were infected with larger doses of spores or in studies involving older hosts, the moderators collectively accounted for only 10.92% of the large heterogeneity in HRs ($I^2 = 94.44\%$). The results from our experiment closely aligned with the findings of the meta-analysis. Thus, our experiment can serve as a valuable reference for standardizing research methodologies in laboratory cage trials.

The lack of strong evidence regarding the significance of any of the included moderators was surprising. Future studies must account for high heterogeneity in the effect of *Nosema* infection on honeybees. Given the type of studies incorporated into our systematic review and meta-analysis (Table 1), we strongly recommend future research to address the impact of infection on mortality in older individuals, including those considerably older than a few days. Most of the research included in this analysis focuses on one-day-old bees, which is somewhat justified since newly emerged bees are more susceptible to *Nosema*

Table 1. Overview of studies included in the systematic review and meta-analysis

Study	Reference	Food	Inoculation age (days)	Inoculation method	Inoculation dose	Group size	Number of replicates	N	Mortality assessment (days)	Temperature
1	Duguet <i>et al.</i> (2022)	Plain sucrose	3	Individual	120 000	20	4	80	14	34
2	Berbec <i>et al.</i> (2022)	Plain sucrose	2	Collective	10 000	150	4	600	7	30
3		Plain sucrose	10	Collective	10 000	150	4	600	7	30
4	Balbuena <i>et al.</i> (2023)	Plain sucrose	2	Collective	100 000	70	3	210	30	30
5	Zhang <i>et al.</i> (2021)	Plain sucrose	5	Individual	100 000	45	3	135	20	34
6	Özgör (2021)	Plain sucrose	1	Individual	1 000 000	30	1	30	12	34
7	Naree <i>et al.</i> (2021b)	Supplement	1	Individual	100 000	50	3	150	30	34
8	Liu <i>et al.</i> (2021)	Plain sucrose	10	Individual	100 000	20	3	60	10	35
9	Hosaka <i>et al.</i> (2021)	Plain sucrose	1	Individual	140	30	3	90	21	33
10	Chaimanee <i>et al.</i> (2021)	Plain sucrose	3	Individual	100 000	30	3	90	10	34
11	Borges <i>et al.</i> (2021)	Plain sucrose	1	Individual	50 000	40	1	40	54	30
12	Almasri <i>et al.</i> (2021)	Plain sucrose	1	Individual	100 000	30	7	210	21	33
13	Straub <i>et al.</i> (2020)	Supplement	1	Collective	10 000	20	22	440	14	34
14	Porrini <i>et al.</i> (2020)	Supplement	2	Individual	1 000 000	50	5	250	13	28
15	Paris <i>et al.</i> (2020)	Plain sucrose	2	Collective	100 000	50	3	150	22	33
16	Mura <i>et al.</i> (2020)	Plain sucrose	1	Individual	100 000	21	3	63	30	31
17	Kim <i>et al.</i> (2020)	Plain sucrose	4	Individual	50 000	20	3	60	15	34
18		Plain sucrose	4	Individual	50 000	20	3	60	15	34
19		Plain sucrose	4	Individual	50 000	20	3	60	15	34
20		Plain sucrose	4	Individual	50 000	20	3	60	15	34
21	Borges <i>et al.</i> (2020)	Plain sucrose	1	Individual	50 000	40	3	120	54	33
22	Bell <i>et al.</i> (2020)	Plain sucrose	1	Individual	40 000	123	1	123	9	36
23	Arismendi <i>et al.</i> (2020)	Supplement	2	Individual	100 000	75	4	300	20	30
24	Sinpoo <i>et al.</i> (2018)	Plain sucrose	5	Individual	100 000	30	3	90	14	34
25	Ptaszyńska <i>et al.</i> (2018)	Plain sucrose	3	Collective	125 000	40	10	400	16	35
26	Panek <i>et al.</i> (2018)	Supplement	1	Individual	50 000	130	4	520	21	33
27	Li <i>et al.</i> (2018)	Supplement	1	Individual	100 000	40	4	160	21	34
28	Arredondo <i>et al.</i> (2018)	Plain sucrose	3	Collective	500 000	50	3	150	7	35
29	Tritschler <i>et al.</i> (2017)	Plain sucrose	1	Collective	100 000	50	6	300	14	35
30	Paris <i>et al.</i> (2017)	Supplement	6	Individual	100 000	45	24	1080	22	33
31	Li <i>et al.</i> (2017)	Plain sucrose	2	Individual	100 000	40	6	240	26	34

32	Ptaszyńska <i>et al.</i> (2016)	Plain sucrose	3	Individual	32 000	40	6	240	21	30
33	Natsopoulou <i>et al.</i> (2016)	Plain sucrose	4	Individual	100 000	18	5	90	42	30
34	Higes <i>et al.</i> (2016)	Plain sucrose	5	Individual	50 000	25	3	75	30	27
35	Milbrath <i>et al.</i> (2015)	Plain sucrose	1	Individual	30 000	100	3	300	30	30
36	Huang <i>et al.</i> (2015)	Supplement	5	Individual	100 000	30	3	90	50	30
37	Doublet <i>et al.</i> (2015)	Plain sucrose	2	Individual	100 000	30	3	90	13	30
38		Plain sucrose	2	Individual	100 000	30	4	120	25	30
39	Williams <i>et al.</i> (2014)	Plain sucrose	2	Individual	35 000	20	3	60	30	33
40	Van der Zee <i>et al.</i> (2014)	Plain sucrose	5	Individual	50 000	25	4	100	25	34
41	Retschnig <i>et al.</i> (2014b)	Supplement	2	Individual	100 000	20	5	100	14	34
42	Retschnig <i>et al.</i> (2014a)	Plain sucrose	1	Collective	100 000	20	4	80	14	30
43	Aufauvre <i>et al.</i> (2014)	Supplement	1	Individual	125 000	165	1	165	25	33
44	Milbrath <i>et al.</i> (2013)	Plain sucrose	5	Individual	125 000	20	2	40	32	33
45	Goblirsch <i>et al.</i> (2013)	Supplement	1	Individual	10 000	30	3	90	28	28
46	Dussaubat <i>et al.</i> (2013)	Plain sucrose	5	Individual	40 000	30	3	90	19	33
47	Di Pasquale <i>et al.</i> (2013)	Supplement	1	Individual	100 000	70	1	70	50	34
48	Aufauvre <i>et al.</i> (2012)	Supplement	1	Individual	125 000	50	3	150	22	33
49		Supplement	1	Individual	125 000	50	3	150	22	33
50	Vidau <i>et al.</i> (2011)	Supplement	5	Individual	125 000	50	3	150	20	35

The table presents information on studies investigating worker honeybee mortality in control and *Nosema*-infected individuals. Each study is catalogued with details including reference, the type of food provided (plain sucrose or supplemented), worker age at spore inoculation, method of inoculation (individual or collective feeding), estimated spore dose per individual, group sizes with replicates, total number of tested individuals (N), duration of mortality assessment, and incubation temperatures.

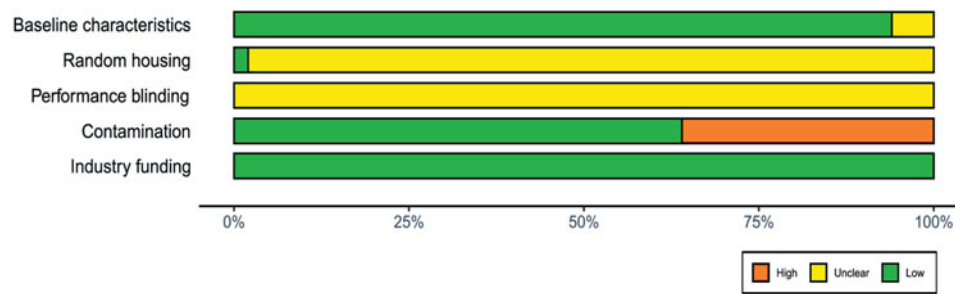


Figure 3. Summary plot of the results from the Systematic Review Centre for Laboratory animal Experimentation (SYRCLE) risk of bias tool. Green indicates a low risk of bias, yellow is unclear, and red indicates a high risk of bias.

infection compared to older individuals (Urbieta-Magro *et al.*, 2019). Additionally, even in healthy colonies, trace amounts of *Nosema* spores are detectable, suggesting that the in-hive environment may be the first where bees encounter this pathogen. However, several studies have failed to detect spores in one-day-old bees while consistently identifying *N. ceranae* spores in older bees (Smart and Sheppard, 2012; Jack *et al.*, 2016). This indicates that the external environment is another source of *N. ceranae* infection. Foraging for food likely exposes bees to spores, increasing their risk of infection. Our research suggests a trend for a positive correlation between the age of workers at the time of inoculation and the risk of mortality. Therefore, it is crucial to investigate the effects of repeated exposure to low doses of spores in older bees, particularly foragers. This experimental setup would provide a more accurate approximation of real-world scenarios, addressing a significant gap in our understanding of *Nosema* infection dynamics. Moreover, this scenario could help explain the extremely high spore infection levels, often reaching multi-million counts, observed in the oldest bees (Smart and Sheppard, 2012; Li *et al.*, 2017; Jabal-Uriel *et al.*, 2022). Additionally, another important issue for future research would be the geographic patterns. Across continents, the majority of the studies included here were based in Europe, which may disproportionately reflect conditions, practices, or bee populations specific to this region. Geographic bias needs to be addressed to enable global analyses and comparisons between regions, especially considering that experiments devoted to geographic differences in *Nosema* virulence are scarce (e.g. Genersch, 2010; Dussaubat *et al.*, 2013; Van der Zee *et al.*, 2014). Other potentially important factors that require further study include, for example, the phenotype of the studied honeybees or the season (time of year).

Our findings indicate that *N. ceranae* is a serious threat to honeybees in terms of mortality. This study strongly supports the idea that nosemosis can significantly contribute to honeybee colony losses. However, it's crucial to treat cage trials as an initial step in assessing infection effects and possible treatment measures. The subsequent step should involve conducting similar research under natural conditions within colonies, where bees experience not only individual immunity but also full social immunity. The value of this approach is confirmed when we compare the results of studies such as those by Li *et al.* (2018) and Lourenço *et al.* (2021). In the former, artificially infected bees were examined in cages, while in the latter, artificially infected bees were introduced into colonies. The results showed a significantly lower spore load in bees living in colonies compared to those maintained in cages 12 days post-infection. This demonstrates the significant role that the colony environment and its components, including substances with high antibiotic activity like propolis (Simone-Finstrom *et al.*, 2017; Mura *et al.*, 2020), secondary plant metabolites in pollen and honey (Erler and Moritz, 2016),

or even queen presence (Huang *et al.*, 2024), can play. Equally important are the behavioral defense mechanisms of bees, such as avoiding trophallaxis among sick bees (Naug and Gibbs, 2009) or consumption of honey with higher antibiotic activity by diseased bees (Gherman *et al.*, 2014). In natural colony conditions, however, honeybees face various challenges, including exposure to pesticides and other chemical substances. The synergistic impact of these challenges, combined with *Nosema* infection, surely increases the mortality rate among bees and affects queen survival (Aufauvre *et al.*, 2012, 2014; Dussaubat *et al.*, 2016; Paris *et al.*, 2018). Additionally, *Nosema*-infected bees experience higher levels of hunger, leading to energetic stress (Mayack and Naug, 2009; Alaux *et al.*, 2010). The expenditure of energy in the colony environment is considerably higher than in laboratory cages due to task performance. Therefore, not only should experimental methodologies be critically evaluated for ecological accuracy, but outcomes obtained in controlled settings need validation within the context of natural environments. This approach is essential to ensure that the results and conclusions capture the complexity of real-world effects.

Given that our results indicate a high risk that *Nosema* poses to honeybees, it is important to consider these findings in relation to other bee species. This is particularly concerning due to the ease with which *N. ceranae* can infect a variety of species, including bumblebees and solitary bees (Porrini *et al.*, 2017; Martín-Hernández *et al.*, 2018; Grupe and Quandt, 2020). However, our findings should not be seen as an unequivocal threat to all bee species. For instance, studies on the solitary bee *Osmia bicornis* suggest that the impact of *Nosema* infection on mortality is minimal (Müller *et al.*, 2019). In the case of bumblebees, although *N. ceranae* has been detected in various species (Plischuk *et al.*, 2009; Grupe and Quandt, 2020), recent evidence shows that spores pass through the digestive tract without leading to infection, suggesting no pathogen proliferation (Van Der Steen *et al.*, 2022). Therefore, *N. ceranae* may not represent as severe a threat to solitary bees and bumblebees as it does to honeybees. Instead, these species may act as reservoir hosts for *N. ceranae* within pollinator networks.

Our study indicates that *N. ceranae* significantly influences the mortality of worker bees and, as such, likely poses a serious survival threat to the honeybee and the ecosystem services it provides (Papa *et al.*, 2022). The search for the treatment of nosemosis is ongoing (Iorizzo *et al.*, 2022). Significant attention is paid to the application of Good Beekeeping Practices as a form of prevention (Formato *et al.*, 2022). However, while these methods yield some results, they still prove insufficient (Huang *et al.*, 2013; Holt and Grozinger, 2016; Lang *et al.*, 2023; Prouty *et al.*, 2023; Garrido *et al.*, 2024). There is a pressing need for further research on *N. ceranae*, especially in the context of its effective control strategies that consider the microbiological safety of the hive products (i.e. pollen and honey).

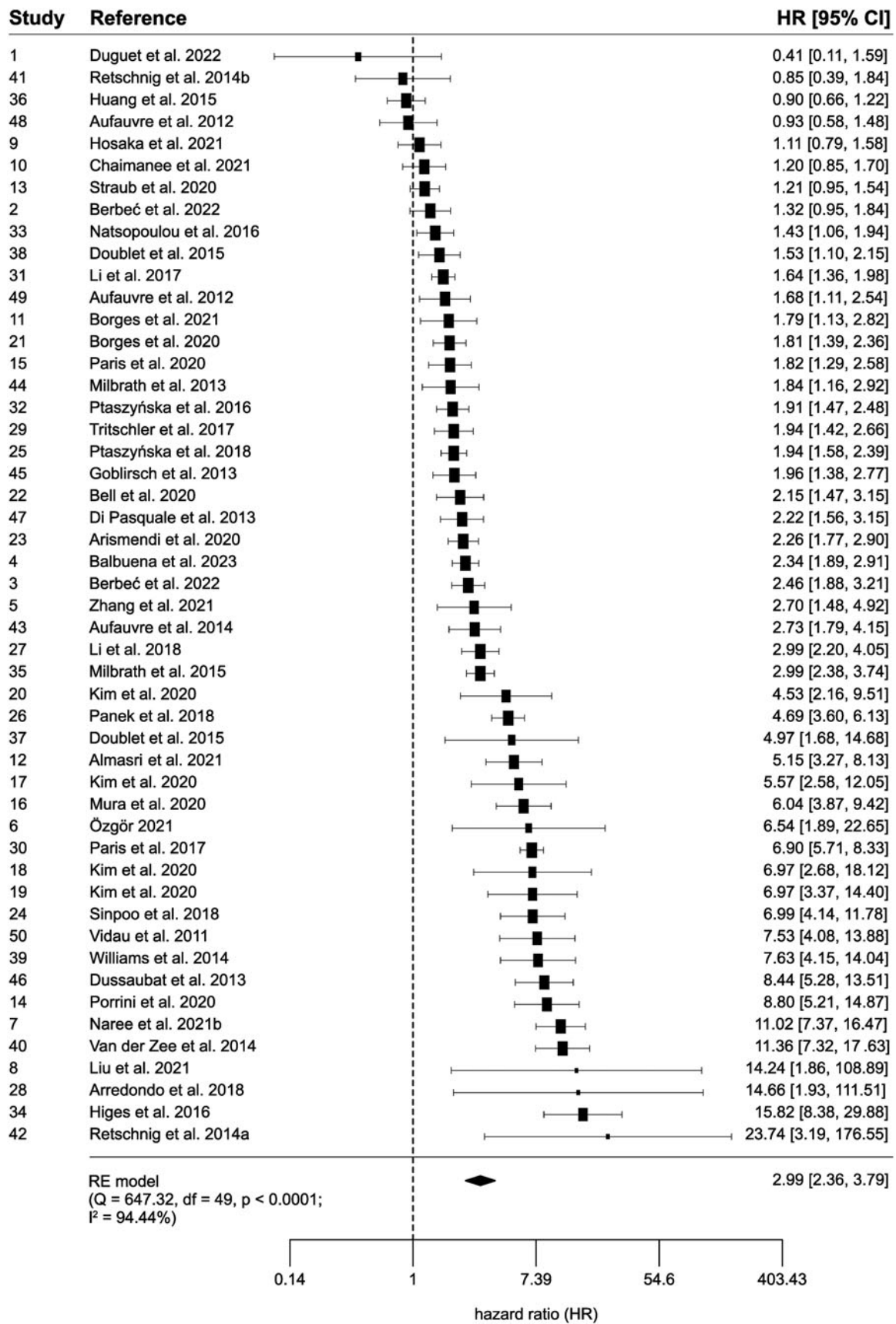


Figure 4. Forest plot of the random-effects meta-analysis of hazard ratios (HRs) and 95% confidence intervals. Diamond demonstrates the overall estimate (with the width reflecting the 95% CI). Black squares indicate the study HRs and their sizes indicate the weight of the study in the meta-analysis. The dashed line indicates no difference between groups (HR = 1). The Q and I² statistics are tests of heterogeneity.

Table 2. Grading of Recommendations, Assessment, Development, and Evaluations (GRADE) assessment of confidence of cumulative evidence

Number of studies	Overall risk of bias	Inconsistencies	Indirectness	Imprecision	Publication bias	Effect	Dose response	Quality
50	Serious	Serious	Not serious	Not serious	Likely	HR = 2.99 [2.36–3.79] (large)	$F_{1,44} = 3.650$, $P = 0.063$	High

Supplementary material. The supplementary material for this article can be found at <https://doi.org/10.1017/S0031182024001446>.

Data availability statement. The datasets generated and analysed during the current study are available in the Zenodo repository (Ostap-Chec et al., 2024).

Acknowledgements. We thank Sławomir Jurczyk (University of Agriculture in Kraków, Poland) for technical assistance.

Author contributions. Monika Ostap-Chec: Investigation, Funding acquisition, Writing – Original Draft, Writing – Review & Editing. Jessica Cait: Formal Analysis, Resources, Visualization, Writing – Review & Editing. R. Wilder Scott: Formal Analysis, Resources. Aneta Arct: Investigation, Writing – Review & Editing. Dawid Moroń and Marcin Rapacz: Resources, Writing – Review & Editing. Krzysztof Miler: Conceptualization, Methodology, Investigation, Formal analysis, Data Curation, Visualization, Resources, Project administration, Writing – Review & Editing.

Financial support. This work was supported by the National Science Centre, Poland [grant number Preludium UMO-2021/41/N/NZ8/02917]. The funder had no role in study design, data collection and analysis, decision to publish, or preparation of the manuscript.

Competing interests. The authors declare there are no conflicts of interest.

Ethical standards. Not applicable.

References

- Abrol DP (2012) Honeybee and crop pollination. In Abrol DP (ed.), *Pollination Biology: Biodiversity Conservation and Agricultural Production*. Dordrecht: Springer Netherlands, pp. 85–110. https://doi.org/10.1007/978-94-007-1942-2_5.
- Aizen MA and Harder LD (2009) The global stock of domesticated honey bees is growing slower than agricultural demand for pollination. *Current Biology* **19**, 915–918.
- Alaux C, Brunet J-L, Dussaubat C, Mondet F, Tchamitchan S, Cousin M, Brillard J, Baldy A, Belzunces LP and Le Conte Y (2010) Interactions between *Nosema* microspores and a neonicotinoid weaken honeybees (*Apis mellifera*). *Environmental Microbiology* **12**, 774–782.
- Almasri H, Tavares DA, Diogon M, Pioz M, Alamil M, Sené D, Tchamitchian S, Cousin M, Brunet J-L and Belzunces LP (2021) Physiological effects of the interaction between *Nosema ceranae* and sequential and overlapping exposure to glyphosate and difenoconazole in the honey bee *Apis mellifera*. *Ecotoxicology and Environmental Safety* **217**, 112258.
- Arismendi N, Caro S, Castro MP, Vargas M, Riveros G and Venegas T (2020) Impact of mixed infections of gut parasites *Lotmaria passim* and *Nosema ceranae* on the lifespan and immune-related biomarkers in *Apis mellifera*. *Insects* **11**, 420.
- Arredondo D, Castelli L, Porrini MP, Garrido PM, Eguaras MJ, Zunino P and Antúnez K (2018) *Lactobacillus kunkeei* strains decreased the infection by honey bee pathogens *Paenibacillus larvae* and *Nosema ceranae*. *Beneficial Microbes* **9**, 279–290.
- Aufauvre J, Biron DG, Vidau C, Fontbonne R, Roudel M, Diogon M, Viguès B, Belzunces LP, Delbac F and Blot N (2012) Parasite-insecticide interactions: a case study of *Nosema ceranae* and fipronil synergy on honeybee. *Scientific Reports* **2**, 326.
- Aufauvre J, Misme-Aucouturier B, Viguès B, Texier C, Delbac F and Blot N (2014) Transcriptome analyses of the honeybee response to *Nosema ceranae* and insecticides. *PLoS ONE* **9**, e91686.
- Balbuena S, Castelli L, Zunino P and Antúnez K (2023) Effect of chronic exposure to sublethal doses of Imidacloprid and *Nosema ceranae* on immunity, gut microbiota, and survival of africanized honey bees. *Microbial Ecology* **85**, 1485–1497.
- Bartolomé C, Higes M, Hernández RM, Chen YP, Evans JD and Huang Q (2024) The recent revision of the genera *Nosema* and *Vairimorpha* (Microsporidia: Nosematidae) was flawed and misleads bee scientific community. *Journal of Invertebrate Pathology* **206**, 108146. <https://doi.org/10.1016/j.jip.2024.108146>.
- Bell HC, Montgomery CN, Benavides JE and Nieh JC (2020) Effects of *Nosema ceranae* (Dissociodihaplophasida: Nosematidae) and flupyradifurone on olfactory learning in honey bees, *Apis mellifera* (Hymenoptera: Apidae). *Journal of Insect Science* **20**, 29.
- Berbeć E, Migdał P, Cebat M, Roman A and Murawska A (2022) Honeybee age and inoculum concentration as factors affecting the development of *Nosema ceranae* infection. *The European Zoological Journal* **89**, 1180–1190.
- Borges D, Guzman-Novoa E and Goodwin PH (2020) Control of the microsporidian parasite *Nosema ceranae* in honey bees (*Apis mellifera*) using nutraceutical and immuno-stimulatory compounds. *PLOS ONE* **15**, e0227484.
- Borges D, Guzman-Novoa E and Goodwin PH (2021) Effects of prebiotics and probiotics on honey bees (*Apis mellifera*) infected with the microsporidian parasite *Nosema ceranae*. *Microorganisms* **9**, 481.
- Botías C, Martín-Hernández R, Barrios L, Meana A and Higes M (2013) *Nosema* spp. infection and its negative effects on honey bees (*Apis mellifera iberiensis*) at the colony level. *Veterinary Research* **44**, 25.
- Chaimanee V, Pettis JS, Chen Y, Evans JD, Khongphinitbunjong K and Chantawannakul P (2013) Susceptibility of four different honey bee species to *Nosema ceranae*. *Veterinary Parasitology* **193**, 260–265.
- Chaimanee V, Kasem A, Nuanjohn T, Boonmee T, Siangsuepchart A, Malaithong W, Sinpoo C, Disayathanoowat T and Pettis JS (2021) Natural extracts as potential control agents for *Nosema ceranae* infection in honeybees, *Apis mellifera*. *Journal of Invertebrate Pathology* **186**, 107688.
- Chen Y, Evans JD, Smith IB and Pettis JS (2008) *Nosema ceranae* is a long-present and wide-spread microsporidian infection of the European honey bee (*Apis mellifera*) in the United States. *Journal of Invertebrate Pathology* **97**, 186–188.
- Cox-Foster DL, Conlan S, Holmes EC, Palacios G, Evans JD, Moran NA, Quan P-L, Briese T, Hornig M, Geiser DM, Martinson V, vanEngelsdorp D, Kalkstein AL, Drysdale A, Hui J, Zhai J, Cui L, Hutchison SK, Simons JF, Egholm M, Pettis JS and Lipkin WI (2007) A metagenomic survey of microbes in honey bee colony collapse disorder. *Science* **318**, 283–287.
- Di Pasquale G, Salignon M, Le Conte Y, Belzunces LP, Decourtye A, Kretzschmar A, Suchail S, Brunet J-L and Alaux C (2013) Influence of pollen nutrition on honey bee health: do pollen quality and diversity matter? *PLoS ONE* **8**, e72016.
- Doublet V, Labarussias M, De Miranda JR, Moritz RFA and Paxton RJ (2015) Bees under stress: sublethal doses of a neonicotinoid pesticide and pathogens interact to elevate honey bee mortality across the life cycle. *Environmental Microbiology* **17**, 969–983.
- Duguet J, Zuñiga F and Martínez J (2022) Antifungal activity of ‘HO21-F’, a formulation based on *Olea europaea* plant extract, in honey bees infected with *Nosema ceranae*. *Journal of Invertebrate Pathology* **193**, 107801.
- Dussaubat C, Sagastume S, Gómez-Moracho T, Botías C, García-Palencia P, Martín-Hernández R, Le Conte Y and Higes M (2013) Comparative study of *Nosema ceranae* (Microsporidia) isolates from two different geographic origins. *Veterinary Microbiology* **162**, 670–678.
- Dussaubat C, Maisonnasse A, Crauser D, Tchamitchian S, Bonnet M, Cousin M, Kretzschmar A, Brunet J-L and Le Conte Y (2016) Combined neonicotinoid pesticide and parasite stress alter honeybee queens’ physiology and survival. *Scientific Reports* **6**, 31430.

- Erler S and Moritz RFA (2016) Pharmacophagy and pharmacophory: mechanisms of self-medication and disease prevention in the honeybee colony (Apis mellifera). *Apidologie* 47, 389–411.
- Fernández JM, Puerta F, Cousinou M, Dios-Palomares R, Campano F and Redondo L (2012) Asymptomatic presence of *Nosema* spp. in Spanish commercial apiaries. *Journal of Invertebrate Pathology* 111, 106–110.
- Formato G, Rivera-Gomis J, Bubnic J, Martín-Hernández R, Milito M, Croppi S and Higes M (2022) Nosemosis prevention and control. *Applied Sciences* 12, 783.
- Fries I, Feng F, da Silva A, Slemenda SB and Pieniazek NJ (1996) *Nosema ceranae* n. sp. (Microspora, Nosematidae), morphological and molecular characterization of a microsporidian parasite of the Asian honey bee *Apis cerana* (Hymenoptera, Apidae). *European Journal of Protistology* 32, 356–365.
- Fries I, Chauzat M-P, Chen Y-P, Doublet V, Genersch E, Gisder S, Higes M, McMahon DP, Martín-Hernández R, Natsopoulou M, Paxton RJ, Tanner G, Webster TC and Williams GR (2013) Standard methods for *Nosema* research. *Journal of Apicultural Research* 52, 1–28.
- Fürst MA, McMahon DP, Osborne JL, Paxton RJ and Brown MJF (2014) Disease associations between honeybees and bumblebees as a threat to wild pollinators. *Nature* 506, 364–366.
- Garibaldi LA, Steffan-Dewenter I, Winfree R, Aizen MA, Bommarco R, Cunningham SA, Kremen C, Carvalheiro LG, Harder LD, Afik O, Bartomeus I, Benjamin F, Boreux V, Cariveau D, Chacoff NP, Dudenhöffer JH, Freitas BM, Ghazoul J, Greenleaf S, Hipólito J, Holzschuh A, Howlett B, Isaacs R, Javorek SK, Kennedy CM, Krewenka KM, Krishnan S, Mandelik Y, Mayfield MM, Motzke I, Munyuli T, Nault BA, Otieno M, Petersen J, Pisanty G, Potts SG, Rader R, Ricketts TH, Rundlöf M, Seymour CL, Schüepp C, Szentgyörgyi H, Taki H, Tschardt T, Vergara CH, Viana BF, Wanger TC, Westphal C, Williams N and Klein AM (2013) Wild pollinators enhance fruit set of crops regardless of honey bee abundance. *Science* 339, 1608–1611.
- Garrido PM, Porrini MP, Alberoni D, Baffoni L, Scott D, Mifsud D, Eguaras MJ and Di Gioia D (2024) Beneficial bacteria and plant extracts promote honey bee health and reduce *Nosema ceranae* infection. *Probiotics and Antimicrobial Proteins* 16, 259–274.
- Genersch E (2010) Honey bee pathology: current threats to honey bees and beekeeping. *Applied Microbiology and Biotechnology* 87, 87–97.
- Gherman BI, Denner A, Bobiş O, Dezmiroan DS, Mărghitaş LA, Schlüns H, Moritz RFA and Erler S (2014) Pathogen-associated self-medication behavior in the honeybee *Apis mellifera*. *Behavioral Ecology and Sociobiology* 68, 1777–1784.
- Gisder S, Hedtke K, Möckel N, Frielitz M-C, Linde A and Genersch E (2010) Five-year cohort study of *Nosema* spp. in Germany: does climate shape virulence and assertiveness of *Nosema ceranae*? *Applied and Environmental Microbiology* 76, 3032–3038.
- Gisder S, Möckel N, Linde A and Genersch E (2011) A cell culture model for *Nosema ceranae* and *Nosema apis* allows new insights into the life cycle of these important honey bee-pathogenic microsporidia. *Environmental Microbiology* 13, 404–413.
- Goblirsch M (2018) *Nosema ceranae* disease of the honey bee (*Apis mellifera*). *Apidologie* 49, 131–150.
- Goblirsch M, Huang ZY and Spivak M (2013) Physiological and behavioral changes in honey bees (*Apis mellifera*) induced by *Nosema ceranae* infection. *PLoS ONE* 8, e58165.
- Goulson D, Nicholls E, Botías C and Rotheray EL (2015) Bee declines driven by combined stress from parasites, pesticides, and lack of flowers. *Science* 347, 1255957.
- Grupe AC and Quandt CA (2020) A growing pandemic: a review of *Nosema* parasites in globally distributed domesticated and native bees. *PLOS Pathogens* 16, e1008580.
- Guyatt G, Oxman AD, Akl EA, Kunz R, Vist G, Brozek J, Norris S, Falck-Ytter Y, Glasziou P and deBeer H (2011) GRADE guidelines: 1. Introduction – GRADE evidence profiles and summary of findings tables. *Journal of Clinical Epidemiology* 64, 383–394.
- Guyot P, Ades A, Ouwens MJ and Welton NJ (2012) Enhanced secondary analysis of survival data: reconstructing the data from published Kaplan-Meier survival curves. *BMC Medical Research Methodology* 12, 9.
- Higes M, Martín-Hernández R, Botías C, Bailón EG, González-Porto AV, Barrios L, Del Nozal MJ, Bernal JL, Jiménez JJ, Palencia PG and Meana A (2008a) How natural infection by *Nosema ceranae* causes honeybee colony collapse. *Environmental Microbiology* 10, 2659–2669.
- Higes M, Martín-Hernández R, Garrido-Bailón E, García-Palencia P and Meana A (2008b) Detection of infective *Nosema ceranae* (Microsporida) spores in corbicular pollen of forager honeybees. *Journal of Invertebrate Pathology* 97, 76–78.
- Higes M, Martín-Hernández R, Garrido-Bailón E, González-Porto AV, García-Palencia P, Meana A, Del Nozal MJ, Mayo R and Bernal JL (2009) Honeybee colony collapse due to *Nosema ceranae* in professional apiaries. *Environmental Microbiology Reports* 1, 110–113.
- Higes M, Martín-Hernández R, Martínez-Salvador A, Garrido-Bailón E, González-Porto AV, Meana A, Bernal JL, Del Nozal MJ and Bernal J (2010) A preliminary study of the epidemiological factors related to honey bee colony loss in Spain. *Environmental Microbiology Reports* 2, 243–250.
- Higes M, Rodríguez-García C, Gómez-Moracho T, Meana A, Bartolomé C, Maside X, Barrios L and Martín-Hernández R (2016) Short communication: survival of honey bees (*Apis mellifera*) infected with *Crithidia mellificae* (Langridge and McGhee: ATCC® 30254™) in the presence of *Nosema ceranae*. *Spanish Journal of Agricultural Research* 14, e05SC02.
- Holt HL and Grozinger CM (2016) Approaches and challenges to managing *Nosema* (Microsporida: Nosematidae) parasites in honey bee (hymenoptera: apidae) colonies. *Journal of Economic Entomology* 109, 1487–1503.
- Hooijmans CR, Rovers MM, De Vries RB, Leenaars M, Ritskes-Hoitinga M and Langendam MW (2014) SYRCL's risk of bias tool for animal studies. *BMC Medical Research Methodology* 14, 43.
- Hosaka Y, Kato Y, Hayashi S, Nakai M, Barribeau SM and Inoue MN (2021) The effects of *Nosema ceranae* (Microsporida: Nosematidae) isolated from wild *Apis cerana japonica* (Hymenoptera: Apidae) on *Apis mellifera*. *Applied Entomology and Zoology* 56, 311–317.
- Hristov P, Shumkova R, Palova N and Neov B (2020) Factors associated with honey bee colony losses: a Mini-review. *Veterinary Sciences* 7, 166.
- Huang W-F and Solter LF (2013) Comparative development and tissue tropism of *Nosema apis* and *Nosema ceranae*. *Journal of Invertebrate Pathology* 113, 35–41.
- Huang W-F, Solter LF, Yau PM and Imai BS (2013) *Nosema ceranae* escapes fumagillin control in honey bees. *PLoS Pathogens* 9, e1003185.
- Huang W-F, Solter L, Aronstein K and Huang Z (2015) Infectivity and virulence of *Nosema ceranae* and *Nosema apis* in commercially available north American honey bees. *Journal of Invertebrate Pathology* 124, 107–113.
- Huang W-F, Safo-Mensa A, Palmer-Young E, Evans JD and Chen Y (2024) The effects of queen mandibular pheromone on *Nosema* (Vairimorpha) *ceranae* infections in caged honey bees. *Journal of Invertebrate Pathology* 206, 108167.
- Iorizzo M, Letizia F, Ganassi S, Testa B, Petrarca S, Albanese G, Di Criscio D and De Cristofaro A (2022) Recent advances in the biocontrol of nose-mosis in honey bees (*Apis mellifera* L.). *Journal of Fungi* 8, 424.
- Jabal-Uriel C, Albarracín VN, Calatayud J, Higes M and Martín-Hernández R (2022) Age and season effect the timing of adult worker honeybee infection by *Nosema ceranae*. *Frontiers in Cellular and Infection Microbiology* 11, 823050.
- Jack CJ, Lucas HM, Webster TC and Sagili RR (2016) Colony level prevalence and intensity of *Nosema ceranae* in honey bees (*Apis mellifera* L.). *PLoS One* 11, e0163522.
- Kassambara A, Kosinski M, Biecek P and Scheipl F (2021) Drawing Survival Curves using 'ggplot2'. R package version 0.4.9. Available at <https://CRAN.R-project.org/package=survminer>.
- Kielmanowicz MG, Inberg A, Lerner IM, Golani Y, Brown N, Turner CL, Hayes GJR and Ballam JM (2015) Prospective large-scale field study generates predictive model identifying Major contributors to colony losses. *PLOS Pathogens* 11, e1004816.
- Kim I, Kim D, Gwak W and Woo S (2020) Increased survival of the honey bee *Apis mellifera* infected with the microsporidian *Nosema ceranae* by effective gene silencing. *Archives of Insect Biochemistry and Physiology* 105, e21734.
- Klee J, Besana AM, Genersch E, Gisder S, Nanetti A, Tam DQ, Chinh TX, Puerta F, Ruz JM, Kryger P, Message D, Hatjina F, Korpela S, Fries I and Paxton RJ (2007) Widespread dispersal of the microsporidian *Nosema ceranae*, an emergent pathogen of the western honey bee, *Apis mellifera*. *Journal of Invertebrate Pathology* 96, 1–10.
- Klein A-M, Vaissière BE, Cane JH, Steffan-Dewenter I, Cunningham SA, Kremen C and Tscharntke T (2007) Importance of pollinators in changing

- landscapes for world crops. *Proceedings of the Royal Society B: Biological Sciences* **274**, 303–313.
- Koch H, Brown MJ and Stevenson PC** (2017) The role of disease in bee foraging ecology. *Current Opinion in Insect Science* **21**, 60–67.
- Lang H, Wang H, Wang H, Zhong Z, Xie X, Zhang W, Guo J, Meng L, Hu X, Zhang X and Zheng H** (2023) Engineered symbiotic bacteria interfering *Nosema* redox system inhibit microsporidia parasitism in honeybees. *Nature Communications* **14**, 2778.
- Li W, Evans JD, Li J, Su S, Hamilton M and Chen Y** (2017) Spore load and immune response of honey bees naturally infected by *Nosema ceranae*. *Parasitology Research* **116**, 3265–3274.
- Li W, Chen Y and Cook SC** (2018) Chronic *Nosema ceranae* infection inflicts comprehensive and persistent immunosuppression and accelerated lipid loss in host *Apis mellifera* honey bees. *International Journal for Parasitology* **48**, 433–444.
- Liu Z, Li S and Li H** (2021) Interactions between sublethal doses of thiamethoxam and *Nosema ceranae* in the honey bee, *Apis mellifera*. *Journal of Apicultural Research* **60**, 717–725.
- Lourenço AP, Guidugli-Lazzarini KR, De Freitas NHA, Message D, Bitondi MMG, Simões ZLP and Teixeira ÉW** (2021) Immunity and physiological changes in adult honey bees (*Apis mellifera*) infected with *Nosema ceranae*: the natural colony environment. *Journal of Insect Physiology* **131**, 104237.
- Martín-Hernández R, Meana A, García-Palencia P, Marín P, Botías C, Garrido-Bailón E, Barrios L and Higes M** (2009) Effect of temperature on the biotic potential of honeybee microsporidia. *Applied and Environmental Microbiology* **75**, 2554–2557.
- Martín-Hernández R, Botías C, Barrios L, Martínez-Salvador A, Meana A, Mayack C and Higes M** (2011) Comparison of the energetic stress associated with experimental *Nosema ceranae* and *Nosema apis* infection of honeybees (*Apis mellifera*). *Parasitology Research* **109**, 605–612.
- Martín-Hernández R, Bartolomé C, Chejanovsky N, Le Conte Y, Dalmon A, Dussaubat C, García-Palencia P, Meana A, Pinto MA, Soroker V and Higes M** (2018) *Nosema ceranae* in *Apis mellifera*: a 12 years postdetection perspective. *Environmental Microbiology* **20**, 1302–1329.
- Mayack C and Naug D** (2009) Energetic stress in the honeybee *Apis mellifera* from *Nosema ceranae* infection. *Journal of Invertebrate Pathology* **100**, 185–188.
- McGuinness L** (2019) robvis: Visualize the Results of Risk-of-Bias (ROB) Assessments (Version 0.3. 0). (Version R package version 0.3.0). Available at <https://CRAN.R-project.org/package=robvis>.
- Milbrath MO, Xie X and Huang ZY** (2013) *Nosema ceranae* induced mortality in honey bees (*Apis mellifera*) depends on infection methods. *Journal of Invertebrate Pathology* **114**, 42–44.
- Milbrath MO, Van Tran T, Huang W-F, Solter LF, Tarpy DR, Lawrence F and Huang ZY** (2015) Comparative virulence and competition between *Nosema apis* and *Nosema ceranae* in honey bees (*Apis mellifera*). *Journal of Invertebrate Pathology* **125**, 9–15.
- Moher D, Shamseer L, Clarke M, Ghersi D, Liberati A, Petticrew M, Shekelle P and Stewart LA and PRISMA-P Group** (2015) Preferred reporting items for systematic review and meta-analysis protocols (PRISMA-P) 2015 statement. *Systematic Reviews* **4**, 1.
- Moritz RFA, De Miranda J, Fries I, Le Conte Y, Neumann P and Paxton RJ** (2010) Research strategies to improve honeybee health in Europe. *Apidologie* **41**, 227–242.
- Morse RA and Calderone NW** (2000) The value of honey bees as pollinators of U.S. crops in 2000. *Bee Culture* **128**, 1–15.
- Müller U, McMahan DP and Rolff J** (2019) Exposure of the wild bee *Osmia bicornis* to the honey bee pathogen *Nosema ceranae*. *Agricultural and Forest Entomology* **21**, 363–371.
- Mura A, Pusceddu M, Theodorou P, Angioni A, Floris I, Paxton RJ and Satta A** (2020) Propolis consumption reduces *Nosema ceranae* infection of European honey bees (*Apis mellifera*). *Insects* **11**, 124.
- Mutinelli F** (2011) The spread of pathogens through trade in honey bees and their products (including queen bees and semen): overview and recent developments: -EN- -FR- La dissémination d'agents pathogènes lors des échanges internationaux d'abeilles mellifères et de leurs produits (reines et semence comprises) : état de la situation et évolutions récentes -ES- Propagación de agentes patógenos por el comercio de abejas mieleras y sus derivados (abejas reinas y semen inclusive): panorámica general y evolución reciente. *Revue Scientifique et Technique de l'OIE* **30**, 257–271.
- Naree S, Benbow ME, Suwannapong G and Ellis JD** (2021a) Mitigating *Nosema ceranae* infection in western honey bee (*Apis mellifera*) workers using propolis collected from honey bee and stingless bee (*Tetrigona apicalis*) hives. *Journal of Invertebrate Pathology* **185**, 107666.
- Naree S, Ellis JD, Benbow ME and Suwannapong G** (2021b) The use of propolis for preventing and treating *Nosema ceranae* infection in western honey bee (*Apis mellifera* Linnaeus, 1787) workers. *Journal of Apicultural Research* **60**, 686–696.
- Natsopoulou ME, Doublet V and Paxton RJ** (2016) European isolates of the Microsporidia *Nosema apis* and *Nosema ceranae* have similar virulence in laboratory tests on European worker honey bees. *Apidologie* **47**, 57–65.
- Naug D and Gibbs A** (2009) Behavioral changes mediated by hunger in honeybees infected with *Nosema ceranae*. *Apidologie* **40**, 595–599.
- Ostap-Chec M, Cait J, Scott RW, Arct A, Morón D, Rapacz M and Miler K** (2024) Nosemosis negatively affects honeybee survival: experimental and meta-analytic evidence [Data set]. *Zenodo*. <https://doi.org/10.5281/zenodo.13940487>.
- Özgör E** (2021) The effects of *Nosema apis* and *Nosema ceranae* infection on survival and phenoloxidase gene expression in *Galleria mellonella* (Lepidoptera: Galleriidae) compared to *Apis mellifera*. *Insects* **12**, 953.
- Panek J, Paris L, Roriz D, Mone A, Dubuffet A, Delbac F, Diogon M and El Alaoui H** (2018) Impact of the microsporidian *Nosema ceranae* on the gut epithelium renewal of the honeybee, *Apis mellifera*. *Journal of Invertebrate Pathology* **159**, 121–128.
- Papa G, Maier R, Durazzo A, Lucarini M, Karabagias IK, Plutino M, Bianchetto E, Aromolo R, Pignatti G, Ambrogio A, Pellicchia M and Negri I** (2022) The honey bee *Apis mellifera*: an insect at the interface between human and ecosystem health. *Biology* **11**, 233.
- Paris L, Roussel M, Pereira B, Delbac F and Diogon M** (2017) Disruption of oxidative balance in the gut of the western honeybee *Apis mellifera* exposed to the intracellular parasite *Nosema ceranae* and to the insecticide fipronil. *Microbial Biotechnology* **10**, 1702–1717.
- Paris L, El Alaoui H, Delbac F and Diogon M** (2018) Effects of the gut parasite *Nosema ceranae* on honey bee physiology and behavior. *Current Opinion in Insect Science* **26**, 149–154.
- Paris L, Peghaire E, Moné A, Diogon M, Debros D, Delbac F and El Alaoui H** (2020) Honeybee gut microbiota dysbiosis in pesticide/parasite co-exposures is mainly induced by *Nosema ceranae*. *Journal of Invertebrate Pathology* **172**, 107348.
- Paxton RJ, Klee J, Korpela S and Fries I** (2007) *Nosema ceranae* has infected *Apis mellifera* in Europe since at least 1998 and may be more virulent than *Nosema apis*. *Apidologie* **38**, 558–565.
- Plischuk S, Martín-Hernández R, Prieto L, Lucía M, Botías C, Meana A, Abrahamovich AH, Lange C and Higes M** (2009) South American native bumblebees (Hymenoptera: Apidae) infected by *Nosema ceranae* (Microsporidia), an emerging pathogen of honeybees (*Apis mellifera*). *Environmental Microbiology Reports* **1**, 131–135.
- Pohorecka K, Bober A, Skubida M, Zdańska D and Torój K** (2014) A comparative study of environmental conditions, bee management and the epidemiological situation in apiaries varying in the level of colony losses. *Journal of Apicultural Science* **58**, 107–132.
- Porrini MP, Porrini LP, Garrido PM, de Melo e Silva Neto C, Porrini DP, Muller F, Nuñez LA, Alvarez L, Iriarte PF and Eguaras MJ** (2017) *Nosema ceranae* in south American native stingless bees and social wasp. *Microbial ecology* **74**, 761–764.
- Porrini LP, Porrini MP, Garrido MP, Müller F, Arrascaeta L, Fernández Iriarte PJ and Eguaras MJ** (2020) Infectivity and virulence of *Nosema ceranae* (Microsporidia) isolates obtained from various *Apis mellifera* morphotypes. *Entomologia Experimentalis et Applicata* **168**, 286–294.
- Potts SG, Biesmeijer JC, Kremen C, Neumann P, Schweiger O and Kunin WE** (2010) Global pollinator declines: trends, impacts and drivers. *Trends in Ecology & Evolution* **25**, 345–353.
- Prouty C, Jack C, Sagili R and Ellis JD** (2023) Evaluating the efficacy of common treatments used for *Vairimorpha* (*Nosema*) spp. control. *Applied Sciences* **13**, 1303.
- Ptaszyńska AA, Borsuk G, Zdybicka-Barabas A, Cytryńska M and Małek W** (2016) Are commercial probiotics and prebiotics effective in the treatment and prevention of honeybee nosemosis C? *Parasitology Research* **115**, 397–406.
- Ptaszyńska AA, Trytek M, Borsuk G, Buczek K, Rybicka-Jasińska K and Gryko D** (2018) Porphyrins inactivate *Nosema* spp. microsporidia. *Scientific Reports* **8**, 5523.
- Retschnig G, Neumann P and Williams GR** (2014a) Thioclopid-*Nosema ceranae* interactions in honey bees: host survivorship but not parasite

- reproduction is dependent on pesticide dose. *Journal of Invertebrate Pathology* **118**, 18–19.
- Retschnig G, Williams GR, Mehmman MM, Yañez O, De Miranda JR and Neumann P** (2014b) Sex-specific differences in pathogen susceptibility in honey bees (*Apis mellifera*). *PLoS ONE* **9**, e85261.
- Rohatgi A** (2022) WebPlotDigitizer (Version 4.6) [Computer software]. <https://automeris.io/WebPlotDigitizer>.
- Schüler V, Liu Y-C, Gisder S, Horchler L, Groth D and Genersch E** (2023) Significant, but not biologically relevant: *Nosema ceranae* infections and winter losses of honey bee colonies. *Communications Biology* **6**, 229.
- Simone-Finstrom M, Borba R, Wilson M and Spivak M** (2017) Propolis counteracts some threats to honey bee health. *Insects* **8**, 46.
- Sinpoo C, Paxton RJ, Disayathanoowat T, Krongdang S and Chantawannakul P** (2018) Impact of *Nosema ceranae* and *Nosema apis* on individual worker bees of the two host species (*Apis cerana* and *Apis mellifera*) and regulation of host immune response. *Journal of Insect Physiology* **105**, 1–8.
- Smart MD and Sheppard WS** (2012) *Nosema ceranae* in age cohorts of the western honey bee (*Apis mellifera*). *Journal of Invertebrate Pathology* **109**, 148–151.
- Straub L, Minnameyer A, Strobl V, Kolari E, Friedli A, Kalbermatten I, Merkelbach AJWM, Victor Yañez O and Neumann P** (2020) From antagonism to synergism: extreme differences in stressor interactions in one species. *Scientific Reports* **10**, 4667.
- Therneau T** (2022) coxme: mixed effects Cox models. R package version 2.2-18.1. Available at <https://CRAN.R-project.org/package=coxme>.
- Therneau T** (2023) A Package for Survival Analysis in R. R package version 3.5-7. Available at <https://CRAN.R-project.org/package=survival>.
- Tokarev YS, Huang W-F, Solter LF, Malysh JM, Becnel JJ and Vossbrinck CR** (2020) A formal redefinition of the genera *Nosema* and *Vairimorpha* (Microsporidia: Nosematidae) and reassignment of species based on molecular phylogenetics. *Journal of Invertebrate Pathology* **169**, 107279.
- Tritschler M, Vollmann JJ, Yañez O, Chejanovsky N, Crailsheim K and Neumann P** (2017) Protein nutrition governs within-host race of honey bee pathogens. *Scientific Reports* **7**, 14988.
- Urbietta-Magro A, Higes M, Meana A, Barrios L and Martín-Hernández R** (2019) Age and method of inoculation influence the infection of worker honey bees (*Apis mellifera*) by *Nosema ceranae*. *Insects* **10**, 417. <https://doi.org/10.3390/insects10120417>.
- Van Den Heever JP, Thompson TS, Otto SJG, Curtis JM, Ibrahim A and Pernal SF** (2016) Evaluation of Fumagilin-B[®] and other potential alternative chemotherapies against *Nosema ceranae*-infected honeybees (*Apis mellifera*) in cage trial assays. *Apidologie* **47**, 617–630.
- Van Der Steen JJ, Hendriks MJ, Van Diepeningen AD, Van Gent-Pelzer MP and Van Der Lee TA** (2022) Live and dead qPCR detection demonstrates that feeding of *Nosema ceranae* results in infection in the honey bee but not the bumble bee. *Journal of Apicultural Research* **61**, 352–364.
- Van der Zee R, Gómez-Moracho T, Pisa L, Sagastume S, García-Palencia P, Maside X, Bartolomé C, Martín-Hernández R and Higes M** (2014) Virulence and polar tube protein genetic diversity of *Nosema ceranae* (Microsporidia) field isolates from northern and southern Europe in honeybees (*Apis mellifera iberiensis*). *Environmental Microbiology Reports* **6**, 401–413.
- Vidau C, Diogon M, Aufaivre J, Fontbonne R, Viguès B, Brunet J-L, Texier C, Biron DG, Blot N, El Alaoui H, Belzunces LP and Delbac F** (2011) Exposure to sublethal doses of fipronil and thiacloprid highly increases mortality of honeybees previously infected by *Nosema ceranae*. *PLoS ONE* **6**, e21550.
- Vidau C, Panek J, Texier C, Biron DG, Belzunces LP, Le Gall M, Broussard C, Delbac F and El Alaoui H** (2014) Differential proteomic analysis of midguts from *Nosema ceranae*-infected honeybees reveals manipulation of key host functions. *Journal of Invertebrate Pathology* **121**, 89–96.
- Viechtbauer W** (2010) Conducting meta-analyses in R with the metafor package. *Journal of Statistical Software* **36**, 1–48.
- Williams GR, Shutler D, Burgher-MacLellan KL and Rogers REL** (2014) Intra-population and -community dynamics of the parasites *Nosema apis* and *Nosema ceranae*, and consequences for honey bee (*Apis mellifera*) hosts. *PLoS ONE* **9**, e99465.
- Zhang Y, Su M, Wang L, Huang S, Su S and Huang W-F** (2021) *Vairimorpha* (*Nosema*) *ceranae* infection alters honey bee microbiota composition and sustains the survival of adult honey bees. *Biology* **10**, 905.