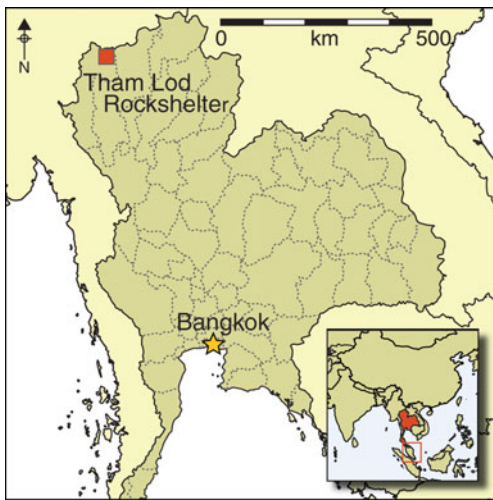


# A Late Pleistocene woman from Tham Lod, Thailand: the influence of today on a face from the past

Susan Hayes<sup>1,2,\*</sup>, Rasmi Shoocongdej<sup>3,4</sup>, Natthamon Pureepatpong<sup>4</sup>, Sanjai Sangvichien<sup>5</sup> & Kanoknart Chintakanon<sup>4</sup>



*Creating a facial appearance for individuals from the distant past is often highly problematic, even when verified methods are used. This is especially so in the case of non-European individuals, as the reference populations used to estimate the face tend to be heavily biased towards the average facial variation of recent people of European descent. To evaluate the problem, a facial approximation of a young woman from the Late Pleistocene rockshelter of Tham Lod in north-western Thailand was compared against the average facial variation of datasets from recent populations. The analysis indicated that the Tham Lod facial approximation was neither overtly recent in*

*facial morphology, nor overtly European. The case is of particular interest as the Tham Lod individual probably belonged to a population ancestral to extant Australo-Melanesian peoples.*

**Keywords:** Thailand, Late Pleistocene, craniofacial morphology, facial approximation, facial reconstruction

## Introduction

Genetic evidence suggests that Thailand has been at the crossroads of human migration between Mainland and Island Southeast Asia from the Pleistocene to the present

<sup>1</sup> Centre for Archaeological Science, University of Wollongong, Northfields Avenue, Wollongong, NSW 2522, Australia

<sup>2</sup> Museum Geologi Bandung, Jalan Diponegoro No. 57 Bandung, Jawa Barat 40122, Indonesia

<sup>3</sup> Department of Archaeology, Faculty of Archaeology, Silpakorn University, Bangkok 10200, Thailand

<sup>4</sup> The Interaction between Humans and their Environments in Highland Pang Mapha, Mae Hong Son Province Project (IHE), Sirindhorn Anthropological Centre, 20 Baromaratchachonnani Road, Taling Chan, Bangkok 10170, Thailand

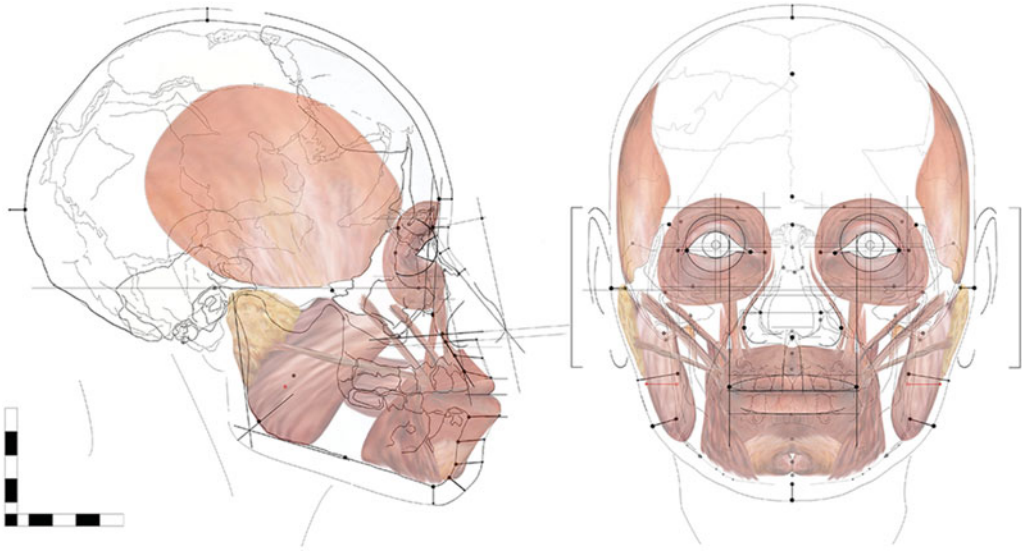
<sup>5</sup> Department of Anatomy, Mahidol University, Rama VI Road, Ratchathewi, Bangkok 10400, Thailand

\* Author for correspondence (Email: [susan\\_hayes@uow.edu.au](mailto:susan_hayes@uow.edu.au))

(Wangkumhang *et al.* 2013), with the northern Highlands of Thailand constituting one of the main migratory routes involving southern China (Sun *et al.* 2013). The original inhabitants of northern Thailand are understood to be the Lawa people, and evidence from autosomal STR loci (Kutanan *et al.* 2011) shows that the Lawa of the north-western Highlands have the greatest genetic distance from other population groups within the region (i.e. the Khon Mueang, Mon, Shan, Lue, Khuen, Yan and Yong). Following recent large-scale genetic studies, there is a growing consensus that the people who first colonised and dominated Mainland and Island Southeast Asia are ancestral to extant Australo-Melanesian peoples, and that the composition of this founder population remained relatively stable until approximately 5000 years ago (Duggan & Stoneking 2014; Lipson *et al.* 2014; Matsumura & Oxenham 2014).

The Tham Lod rockshelter is a north-facing overhang located within the Pang Mapha District of the north-western Highlands of Thailand. Pang Mapha is a mountainous region (600–1700m asl), with a very distinctive karst topography. Pang Mapha has a low population density but high ethnic diversity; current residents include the Hmong, Karen, Red and Black Lahu, Shan and Thai peoples, as well as the Lawa (Shoocongdej 2006). Excavation of the Tham Lod rockshelter was commenced in 2002 by The Highlands Archaeology Project in Pang Mapha District (Shoocongdej 2003–2005, 2006, 2007). It is acknowledged as one of the oldest and most robustly dated sites to be excavated in Mainland Southeast Asia (Marwick 2008). The excavation revealed evidence of periodic human occupation from around 32 380 years ago until the terminal Late Pleistocene (Khaokhiew 2004; Shoocongdej 2007), although subsequent analysis of mussel shell (*Margaritanopsis laosensis*) recovered from the lowest excavation layer indicates that occupation may have commenced as early as 39 960 years ago (Marwick & Gagan 2011). The distribution of lithics, faunal remains and molluscs indicates that most of the human activity took place over a period of approximately 10 000 years (25 000–15 000 BP), and that foraging was maintained as a subsistence strategy (Khlaewkhampud 2003; Shoocongdej 2006, 2007; Wattanapituksakul 2006; Amphansri 2011; Chitkament *et al.* 2015). Around 13 500 years ago, possibly following a rock fall, the area became primarily used for human burials.

During April–August 2002, the skeletal remains (around 65 per cent complete) of a woman were recovered from Area 1, which is the excavation pit that abuts the north-facing cliff constituting the rockshelter overhang. The woman was found oriented on her left side in a flexed position. Across the radius and ulna lay a hammerstone, and above the burial was a circle consisting of five large pebbles and rounded limestone fragments. Sex and age at death were estimated as 25–35 years from the width of the greater sciatic notches of the pelvis, complete fusion of the epiphyses of the left radius and the complete eruption of the upper third molars (Pureepatpong 2006). Using the height of the left radius, and a regression equation developed for Thai and Chinese populations (Sangvichien 1985), her height was estimated as 152±4cm. Accelerated Mass Spectrometry radiocarbon dating of the sediment located adjacent to the pelvis indicates that this individual lived 13 640 (±80) years BP (<sup>14</sup>C dates are calibrated using OxCal 4.2 (Bronk Ramsey 2009) using the IntCal13 calibration curve (Reimer *et al.* 2013), at 95.4% confidence). This makes this Tham Lod rockshelter individual the oldest human burial to be excavated in the



*Figure 1. Tham Lod estimation of facial soft tissue depths (fSTDs) and the facial features (eyes, nose, mouth, ears). Table 1 summarises research articles referenced to estimate the location, shape and size of the facial features. The online supplementary material (OSM) contains details of the methods used to estimate the face and a table of the fSTDs.*

north-western Highlands of Thailand, and probably a direct descendent of the founder population of Southeast Asia.

An estimation of the facial appearance of this Late Pleistocene woman was undertaken in 2015 using a suite of verified methods (see Figures 1–2 and online supplementary material (OSM)) often referred to as ‘facial approximation’. This estimation was primarily undertaken on account of the archaeological significance of the remains, but also because, as an individual who lived in the north-western Highlands of Thailand more than 13 500 years ago, this woman constitutes a test of the methods used to estimate her face. Specifically, a test of the extent to which the methods retain aspects of the unique facial morphology of a woman who is neither recent nor European. As was clearly demonstrated by the problematic facial reconstruction of the 9000-year-old North American remains of ‘Kennewick Man’ (Holden 1998), inappropriate population inflections have serious socio-cultural as well as scientific consequences.

The face of ‘Kennewick Man’ was achieved through the application of the extraordinarily popular method of ‘(forensic) facial reconstruction’. Since 2002, nearly all of the recommendations associated with most, if not all, facial reconstructions have been proved invalid, but facial reconstruction continues nonetheless to be the technique of choice for nearly all forensic artists, anthropologists and palaeo-artists (for detailed methodological reviews, see Hayes *et al.* 2013; Hayes 2014, 2016). Although the application of verified methods to estimate facial morphology is less subjective and more reliable than facial reconstruction, it is still the case that most of the verified methods applied in facial approximation have an inherent chronological and population bias. As can be seen in Table 1, the relationships used to estimate the facial appearance of this Late Pleistocene woman from Tham Lod are unavoidably derived from studies involving recent individuals,



Figure 2. The completed Tham Lod facial approximation.

and furthermore, predominantly of European population affinity (15 European out of 27 populations).

Some of the methods we applied to estimate facial appearance include the verification of their applicability to recent non-European populations, but many do not. Stephan and Simpson (2008) report no practical difference between the different population groups that comprise their large facial soft tissue depth (fSTD) dataset (the average number of individuals from which the weighted means have been derived is 3250). The differences in fSTD measurements within each population group from the total dataset are consistently larger than those between population groups, and, furthermore, the standard measurement error (where reported) is greater than the differences arising from population affinity, sex, adult ageing and body mass (Stephan & Simpson 2008). Relative population neutrality is also reported for eyeball projection (Stephan 2002a), eyebrow position (Stephan 2002b), orientation of the mouth in relation to the mental foramen and lateral iris (Stephan 2003; Song *et al.* 2007; Stephan & Murphy 2008), and, by implication, the relationship between the malar tubercle and the exocanthion (Whitnall 1911; Stephan & Davidson 2008). Average interpupillary distance and average mouth widths have also been found to have no statistically significant difference between Australian European and Central/Southeast Asian populations (Stephan 2003). A study concerning lip height reports that Europeans display thinner lips (Wilkinson *et al.* 2003), and hence Indian subcontinent data from that study was applied to the woman from Tham Lod because of closer geographic proximity. The facial features that appear to be most dominated by findings derived from individuals of European population affinity are nasal projection and nasal dimensions (Rynn *et al.* 2010),

**Table 1. Population affinity associated with the facial approximation methods applied. Non-European populations are in bold type.**

Feature	Aspect estimated	Method referenced	Population affinity
Facial Soft Tissue Depths (fSTDs)	weighted means of facial Soft Tissue Depths (14 median, 3 bilateral)	Stephan & Simpson 2008	European, <b>African-American, Amerindian, Japanese</b>
Eyes	canthi canthi eyeball diameter iris diameter eyeball position eyeball position eyeball position eyeball projection (lateral view)  eyebrow position	Whitnall 1911 Stephan & Davidson 2008 Guyomarc'h <i>et al.</i> 2012 Driessen <i>et al.</i> 2011 Stephan & Davidson 2008 Stephan <i>et al.</i> 2009 Guyomarc'h <i>et al.</i> 2012 Stephan 2002a  Stephan 2002b	' <b>23 races</b> ' Australian-European French-European Netherlands-European Australian-European Australian-European French-European <b>Chinese, African, Mexican, African-American, American-European</b> Australian-European, <b>Central and Southeast Asian</b>
Nose	nasal projection, dimensions, position and tip shape	Rynn <i>et al.</i> 2010	British-European, American-European
Mouth	mouth width/mouth corners  mouth corners mouth width/mouth corners position of the oral fissure lip height	Stephan 2003  Song <i>et al.</i> 2007 Stephan & Murphy 2008 Standing 2008 Wilkinson <i>et al.</i> 2003	Australian-European, <b>Central and Southeast Asian</b> <b>Korean</b> Australian-European not reported <b>Indian Sub-Continent</b>
Ears	ear height	Farkas & Munro 1987	American-European
Underlying anatomy	masseter depth	Kiliaridis <i>et al.</i> 2003	Northern European (possibly Swiss-, Swedish- and/or Netherlands-European)

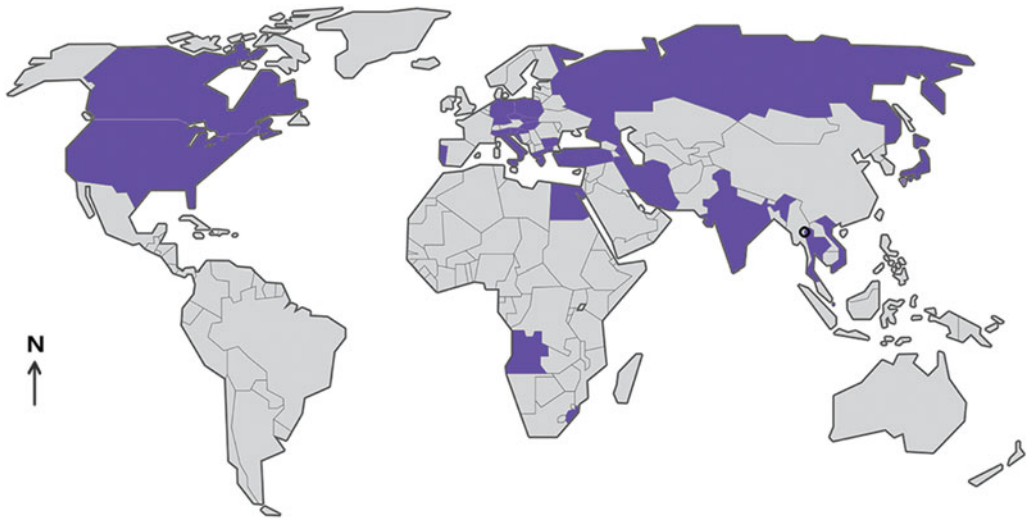


Figure 3. The comparative populations. The 25 international population groups (Farkas et al. 2005) are shown shaded. The Thai village of Tham Lod is indicated by a black circle (northern Thailand). Map modified from unscaled 'Simplified angular world map', accessed under the Creative Commons licence CC0 1.0.

the position of the eyeball within the orbit (Stephan & Davidson 2008; Stephan et al. 2009; Guyomarc'h et al. 2012), the average diameters of the eyeball and iris (Driessen et al. 2011; Guyomarc'h et al. 2012) and the height of the ears (Farkas & Munro 1987).

The facial approximation of this Late Pleistocene woman is probably, therefore, influenced by the facial morphology of recent women, and European women in particular. In order to gauge the extent to which this inappropriate influence occurs, we undertook an anthropometric analysis that involved comparing our results with the average facial dimensions derived from 720 contemporary women living in 25 different countries and across three continents.

## Materials and methods

The fSTD dataset used for this facial approximation is, as discussed above, comparatively population-neutral. To verify the extent of this neutrality with regard to Thailand, a subset of the Stephan and Simpson (2008) fSTDs that account for the same landmarks as fSTDs taken from 36 cadavers of Thai women (Puavaranukroh & Srettabunjong 2011) were compared. Significant differences are taken to be those that are greater than one standard error.

The dataset of ten anthropometric means used for our statistical comparison is from a single study (Farkas et al. 2005). The age range of the women comprising this study (18–30 years) is of a comparable biological age to the Tham Lod remains (25–30 years), and the measures are the anthropometric means of 30 women per population group. The 25 population groups are from Europe, the Middle East, Africa, Asia and North America, although, as can be seen in Figure 3, the populations comprising this study are dominated by Western and Central Europeans. While the populations measured by Farkas

and colleagues (2005) are somewhat eclectic, this research presents a comparatively robust international dataset of average facial measurements, with the same landmark definitions and methods to achieve the ten measurements applied throughout.

The Tham Lod facial approximation is derived from scaled orthogonal CT scans, which means that direct measurements are compatible with the *in situ* measurements from the living women in the Farkas study (Farkas *et al.* 2005). The Tham Lod facial measurements were extracted from the soft tissue terminal landmarks of the relevant fSTDs, and from the landmarks used to estimate the internal facial features (Figure 1, Table S1 for the landmark definitions and fSTDs). The estimation of ear height was analysed separately using Pearson's correlation. The ten measurements covering the facial dimensions and dimensions of the internal features (eyes, nose, mouth) were entered into a cluster analysis by population group, and by facial feature, using Ward's Method with Euclidian distances; these were undertaken in tandem with principal components analyses (PCAs) and box plots. The ten measurements taken from the 25 extant population groups were first analysed independently of the Tham Lod facial approximation to note the overall pattern of clustering, and then analysed with the Tham Lod data to show indications of recent population inflection in the facial approximation. All analyses were accomplished using the statistical software PAST v.3.08 (Hammer *et al.* 2001) with the cluster analyses and PCAs set to a bootstrap of 1000. The ten measures used in the analyses are listed, together with the Tham Lod facial approximation measurements and the means for each population, in Table S2 in the OSM.

## Results

Comparison of the global, weighted fSTD means calculated by Stephan and Simpson (2008), with fSTDs taken from cadavers of Thai women ( $n = 36$ , Puavaranukroh & Srettabunjong 2011), is shown in Figure 4. The global dataset (Stephan & Simpson 2008) displays greater tissue depths at all landmarks except for the zygion (the maximum width at the cheekbones), with the larger differences occurring predominantly along the cheeks and mid-face. Most of the global weighted means fall within one standard deviation of the Thai female mean (note that the Thai fSTD results do not report the standard error), with the exceptions being the nasion and philtrum.

The relationship of ear height to lower face height (subnasale to menton) was sourced from an anthropometric study of 18-year-old North Americans (Farkas & Munro 1987). That relationship was, however, found to bear no correlation (Pearson's  $r = -0.15$ ) with any of the international populations of women aged 18–30 years, including the North American women (Farkas *et al.* 2005). Given that this inaccurate estimation of ear height could confound the multivariate analyses, it was not included as a comparative measure.

The analyses of the ten extant population measures (independently of the Tham Lod individual) result in Singaporean-Chinese, Vietnamese, Thai and Japanese women clustering separately from Indian women, and Zulu women clustering with African-American but not Angolan women. The Middle East populations do not cluster but are spread throughout, and the European women do not clearly cluster by population geography. PC1 (3 per cent variance) is weighted towards facial widths, and shows Japanese

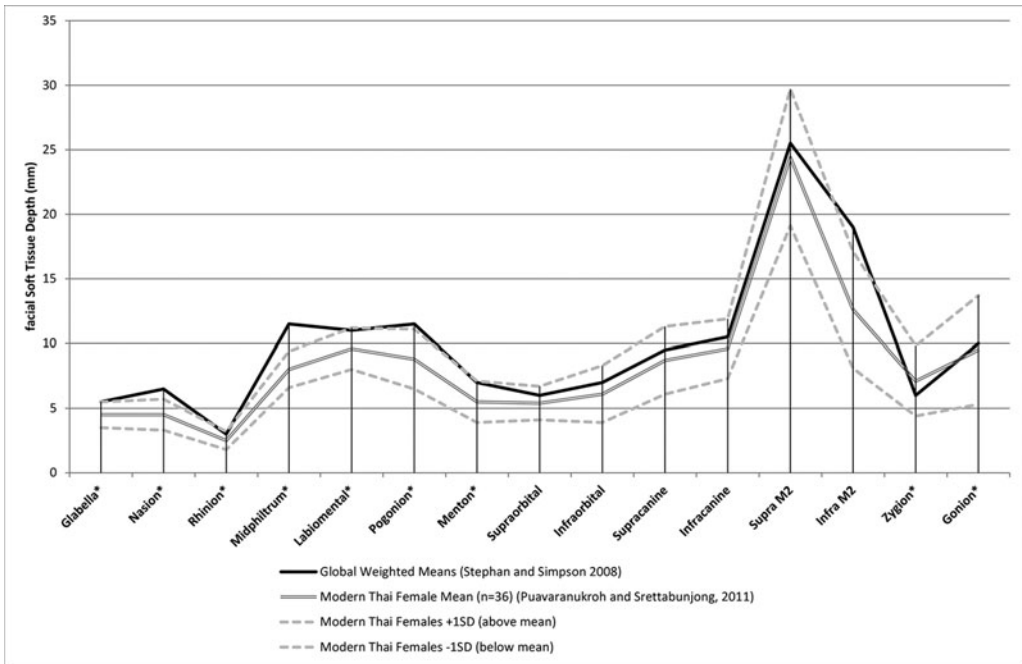


Figure 4. Comparison of global weighted means with fSTD collected from 36 recent Thai female cadavers. The reported Thai standard deviations are indicated with dashed grey lines. The two datasets contain 15 homologous landmarks described in the OSM. The fSTDs applied in this facial approximation are indicated with an asterisk.

women to have the widest faces, followed by Thai, Vietnamese and Singaporean women. PC2 (22 per cent variance) is weighted towards eye spacing and facial height, and shows Indian women to have the widest-spaced eyes, relative to the other facial features, followed by Thai women. There is a relatively high variance in jaw width and inter-canthal width across the populations. Nasal dimensions tend to be dominated by relatively long and narrow noses, which is in keeping with the dataset containing a large number of European population groups.

When the facial measurements of the Tham Lod facial approximation are entered into the cluster analyses, the results indicate that this Late Pleistocene woman shares no close affiliation with any individual extant population, but is co-joined with a discrete cluster of Thai, Japanese, Singaporean-Chinese and Vietnamese women (see Figure 5). Examination of the PCAs (see Figure 6) shows that the main effect of including the Late Pleistocene woman from Tham Lod is to retain the East Asian/Southeast Asian grouping, but with the facial approximation falling at the extreme end of PC1 (46 per cent variance). PC1, as with the analysis undertaken without the Tham Lod facial approximation, is weighted towards facial widths, and, as indicated by the box plots according to facial measurements (see Figure S1), Tham Lod is an outlier in bizygomatic width. PC2 (18 per cent variance) is, as before, weighted towards eye spacing and facial height, with the facial approximation located close to the mean, and sharing this location with African-American, Bulgarian and Turkish women. PC3 (12 per cent variance) and PC4 (10 per cent variance) are less clearly



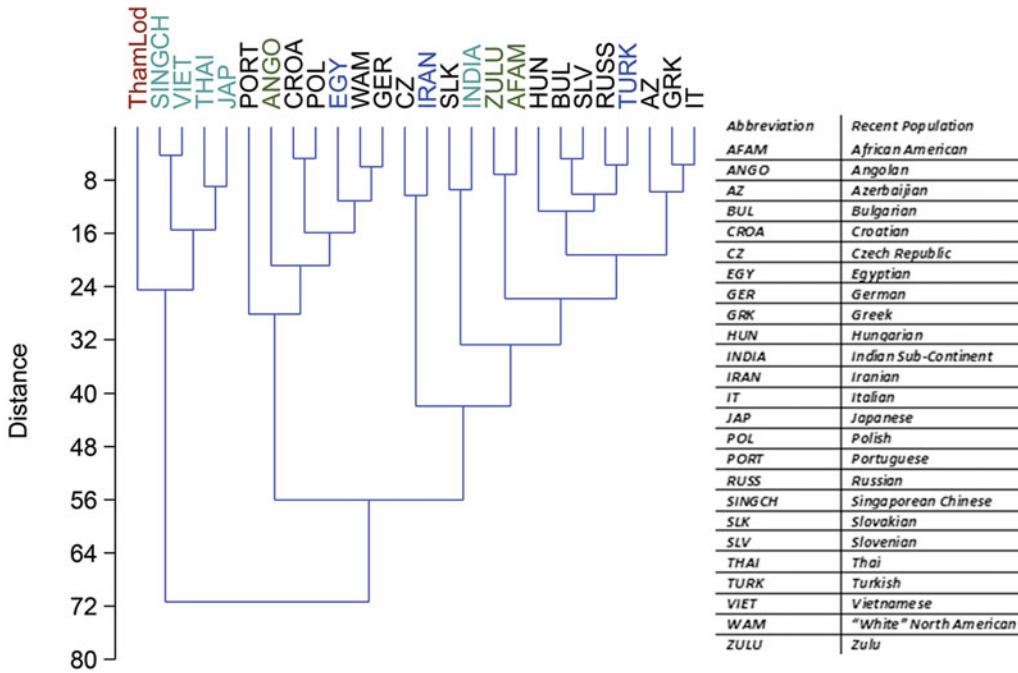


Figure 5. Cluster analysis of all features using Ward's Method in PAST v.3.08 (Hammer et al. 2001) of the Tham Lod facial approximation and 25 extant female populations (Farkas et al. 2005).

separated by facial measures, but indicate a closer affinity between the Tham Lod facial approximation (which is again close to the mean of PC3) and extant modern women of North American, Azerbaijani, Greek and Polish population affinity, although still grouping loosely with Vietnamese and Singaporean-Chinese women.

Figure 7 shows individual cluster analyses by specific facial features: the overall facial dimensions (bizygomatic width, bigonial width, facial height), eye spacing (outer and inner widths), nose (nasal width and height), and mouth width. In facial dimensions (Figure 7a), the Tham Lod facial approximation is affiliated with recent Japanese women, and this pairing is discrete from all of the other populations when only facial widths (bizygomatic and bigonial) are analysed. For eye dimensions (Figure 7b), the facial approximation is linked to Vietnamese women, and co-clusters with a pairing of Singaporean-Chinese and Angolan women. This double-paired cluster is retained when eye spacing, and not eye width, is entered into the analysis. Nasal dimensions (Figure 7c) result in the facial approximation being paired with Angolan women, and located within a discrete cluster containing Vietnamese women and a pairing of Thai and African-American women. Mouth width (Figure 7d) effectively separates the facial approximation and women of African population affinity from nearly all of the other populations, with the exception being that the facial approximation is paired with the mean of Hungarian women. In effect, the cluster analyses (the results of which are mirrored within parallel PCA) show the Tham Lod facial approximation to have a mix of East-Southeast Asian and African population attributes, with only one European population pairing (Hungary), the latter in terms of mouth width.

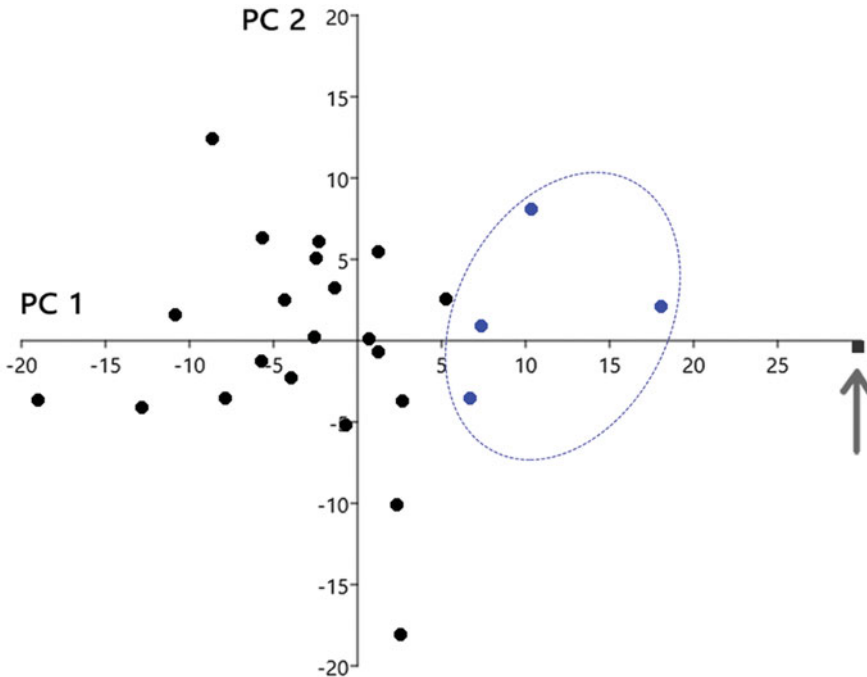


Figure 6. Scatter plot of principal components analysis in PAST v.3.08 (Hammer et al. 2001). The Tham Lod facial approximation is indicated by an arrow on the horizontal axis to the far right of the PC1 axis. The four East and Southeast Asian populations cluster (blue-coloured dots), and are indicated by an ellipse.

## Discussion

Facial approximation differs from most, if not all, facial reconstructions when it involves applying verified skull to soft tissue relationships to estimate facial appearance. Although many of these verified relationships have involved studies of non-European populations, it is still the case that European craniofacial relationships predominate, and all have, of necessity, been derived from recent human populations (Table 1). Studies that have been tested for relative population neutrality include the global weighted means of fSTDs (Stephan & Simpson 2008) and estimation of mouth width (e.g. Stephan 2003; Song *et al.* 2007; Stephan & Murphy 2008). Estimations of the shape and projection of the nose, the position of the eyeball within the orbit, and the average diameters of the eyeball and iris have not been tested, and are more likely to inflect a facial approximation with European characteristics.

Late Pleistocene skulls have been found to display larger jaws (e.g. Velemínská *et al.* 2008) and bigger teeth (e.g. Brace *et al.* 1987) than Late Holocene skulls, and the craniofacial measurements of Late Pleistocene skulls from Africa, East Asia and Europe are mostly, on average, larger than the average craniofacial dimensions displayed by recent humans (Curnoe *et al.* 2012). Late Pleistocene crania have also been found to show a high level of intragroup diversity compared to recent crania (Harvati 2009), probably related to the limited number of individuals available for study, and the poor preservation characteristic

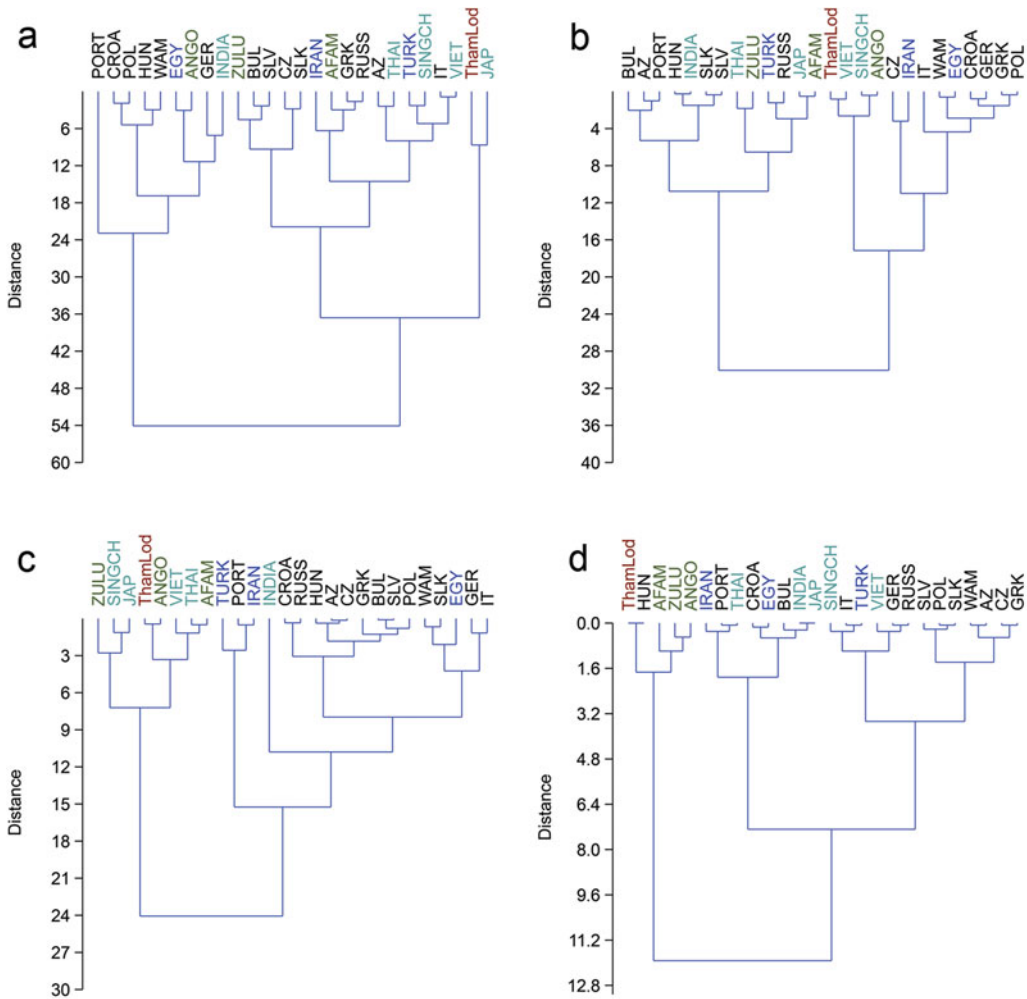


Figure 7. Cluster analysis using Ward's Method in PAST v.3.08 (Hammer et al. 2001) of the facial features of the Tham Lod individual and the 25 populations measured by Farkas et al. (2005). a) Facial height and width; b) eye spacing; c) nose height and width; d) mouth width. For the key to population abbreviations, see Figure 5.

of the comparatively few Late Pleistocene individuals excavated to date. Nevertheless, if the facial approximation methods we applied were able to retain the distinguishing Late Pleistocene characteristic of skull robusticity, then facial widths will distinguish our facial approximation most clearly from modern populations. The results of the analyses indicate that our Tham Lod facial approximation is an outlier in bizygomatic width. In all other facial dimensions, however, the facial approximation groups with the mean anthropometric data taken from recent women, but not recent women of European population affinity.

In essence, this comparative analysis involving the mean variation of extant modern women from 25 different population groups indicates that our facial approximation of Tham Lod is not overly influenced by European facial characteristics. Instead, when all facial dimensions are analysed together, the facial approximation is discrete from all

populations, shows closest affiliation with recent women from East and Southeast Asia, and is most closely affiliated (albeit at a distance) with Japanese women in facial width and height. Analyses of the individual facial features—eyes, nose and mouth—indicate that the Tham Lod facial approximation shares morphological similarities with women of African population affinity, particularly in the dimensions of the nose and mouth. Other than a clustering with extant modern Hungarian women with regard to mouth width, European women, despite dominating both the comparative population study and the methods used to estimate facial appearance, are noticeably absent.

## Conclusion

Due to her chronology, this Late Pleistocene woman is most likely to be ancestral to the people who first colonised and dominated Mainland and Island Southeast Asia until approximately 5000 years ago (Duggan & Stoneking 2014; Lipson *et al.* 2014; Matsumura & Oxenham 2014). Given that this woman is not European and not from the Late Holocene, the relationships we applied to estimate her face are inappropriate. We therefore anticipated that the results of our facial approximation would be indistinguishable from recent populations, and that the face would most likely group with recent European facial dimensions. Instead, when we compared our facial approximation to the mean facial measurements of extant modern women from 25 populations spanning the globe, our estimated facial appearance was shown to be distinct from women of today at a global level, being generally more robust in facial width. Furthermore, while the estimated facial features (eyes, nose and mouth) share morphological similarities with recent women, these are almost exclusively women of East Asian, Southeast Asian and African population affinities. These results indicate that there is some population neutrality in the facial approximation methods we applied, although these results need to be seen as indicative rather than conclusive.

As noted earlier, the anthropometric means of recent women (Farkas *et al.* 2005) are population eclectic. The populations included in the study by Farkas and colleagues are not representative of the extant human population diversities of Europe, the Middle East, Asia, Africa and North America (cf. Figure 4). In addition, the facial measurements we analysed do not fully encapsulate facial variation and, as indicated by the multivariate analyses, do not clearly distinguish between extant populations from quite distinct geographic regions. Therefore, while our facial approximation of the Tham Lod individual is clearly distinguished from women of European population affinity, the apparent inflection in our facial approximation of East Asian, Southeast Asian and African facial morphologies needs to be treated with caution. Further research with a more representative global dataset and more facial means may produce more nuanced, and perhaps different, results.

What is suggested by this study is that the methods we applied appear to be appropriate for estimating the face of non-European past peoples. Although these research methods are dominated by relationships derived from recent European skulls and faces, our estimation of the face of a Late Pleistocene woman from the Tham Lod Rockshelter in the north-western Highlands of Thailand is neither overtly recent, nor overtly European. Therefore, it seems likely that at least some of the methods we applied to estimate the face are shaped by, and

retain, aspects of an individual's unique craniofacial morphology and location within the archaeological record.

## Acknowledgements

This research project was made possible by the support of a number of grants and the collaboration and assistance of many institutions, including the Tham Lod Wildlife Sanctuary of National Park, Ministry of Natural Resources and Environment, Thailand; Fine Arts Department; Ministry of Culture, Thailand; Department of Archaeology, Silpakorn University. Financial support for the Highland Archaeology Project in Pang Mapha phases one and two (HAPP) was provided by the Thailand Research Fund (TRF) from 2001–2006. The Archaeological Heritage Management at Tham Lod and Ban Rai rockshelters project was supported by the US Ambassador Grant 2006 from 2006–2007. The Archaeological Exploration and Heritage Management in Pai-Pang Mapha-Khun Yuan District in Mae Hong Son Province, project phases one to three (PPK) was supported by the TRF from 2007–2012, and The Interaction between Humans and their Environments in Highland Pang Mapha, Mae Hong Son Province Project (IHE) is supported by the TRF (2013–2016). A debt of gratitude is owed to the local people at Ban Rai and Tham Lod villages. We thank the HAPP, PPK and IHE project teams for their support over many years, and in particular we would like to thank for their help and support the future faces of Thai archaeology: Siriluck Kanthasri, Chonchanok Samrit, Somthawin Sukkiang and Wokanya Na Nongkhai. Finally, we thank the two anonymous reviewers for their insightful comments and recommendations.

## Supplementary material

To view supplementary material for this article, please visit <https://doi.org/10.15184/aqy.2017.18>

## References

- AMPHANSRI, A. 2011. Temporal and spatial analysis of faunal remains from Tham Lod rockshelter site, Pang Mapha District, Mae Hong Son Province. Unpublished MA dissertation, Silpakorn University.
- BRACE, C.L., K.R. ROSENBERG & K.D. HUNT. 1987. Gradual change in human tooth size in the late Pleistocene and post-Pleistocene. *Evolution* 41: 705–20. <https://doi.org/10.2307/2408882>
- BRONK RAMSEY, C. 2009. Bayesian analysis of radiocarbon dates. *Radiocarbon* 51: 337–60. <https://doi.org/10.1017/S0033822200033865>
- CHITKAMENT, T., C. GAILLARD & R. SHOONGDEJ. 2015. Tham Lod rockshelter (Pang Mapha District, north-western Thailand): evolution of the lithic assemblages during the late Pleistocene. *Quaternary International* 416: 151–61. <https://doi.org/10.1016/j.quaint.2015.10.058>
- CURNOE, D., X. JI, A.I.R. HERRIES, K. BAI, P.S.C. TAÇON, Z. BAO, D. FINK, Y. ZHU, J. HELSTROM, Y. LUO, G. CASSIS, B. SU, S. WROE, S. HONG, W.C.H. PARR, S. HUANG & N. ROGERS. 2012. Human remains from the Pleistocene–Holocene transition of southwest China suggest a complex evolutionary history for East Asians. *PLoS ONE* 7: e31918. <https://doi.org/10.1371/journal.pone.0031918>
- DRIESSEN, J.P., H. VUYK & J. BORGSTEIN. 2011. New insights into facial anthropometry in digital photographs using iris-dependent calibration. *International Journal of Pediatric Otorhinolaryngology* 75: 579–84. <https://doi.org/10.1016/j.ijporl.2011.01.023>
- DUGGAN, A.T. & M. STONEKING. 2014. Recent developments in the genetic history of East Asia and Oceania. *Current Opinion in Genetics and Development* 29: 9–14. <https://doi.org/10.1016/j.gde.2014.06.010>
- FARKAS, L.G. & I.R. MUNRO. 1987. *Anthropometric facial proportions in medicine*. Springfield (IL): Charles C. Thomas.
- FARKAS, L.G., M.J. KATIC, C.R. FORREST, K.W. ALT, I. BAGIC, G. BALTADJIEV, E. CUNHA, M. ČVICELOVÁ, S. DAVIES, I. ERASMUS, R. GILLET-NETTING, K. HAJNIS, A. KEMKES-GROTTENTHALER, I. KHOMYAKOVA, A. KUMI, J.S. KGAMPHE, N. KAYO-DAIGO, T. LE, A. MALINOWSKI, M. NEGASHEVA, S. MANOLIS, M. OGETÜRK, R. PARVIZRAD, F. RÖSING, P. SAHU, C. SFORZA, S. SIVKOV, N. SULTANOVA, T. TOMAZO-RAVNIK, G. TÓTH, A. UZUN & E. YAHIA. 2005. International anthropometric study of facial morphology in various ethnic groups/races. *Journal of Craniofacial Surgery* 16: 615–46. <https://doi.org/10.1097/01.scs.0000171847.58031.9e>

- GUYOMARC'H, P., B. DUTAILLY, C. COUTURE & H. COQUEUGNIOT. 2012. Anatomical placement of the human eyeball in the orbit—validation using CT scans of living adults and prediction for facial approximation. *Journal of Forensic Sciences* 57: 1271–75. <https://doi.org/10.1111/j.1556-4029.2012.02075.x>
- HAMMER, Ø., D. HARPER & P. RYAN. 2001. PAST-PALaeontological STATistics. Available at: [http://www.uv.es/pe/2001\\_1/past/pastprog/past.pdf](http://www.uv.es/pe/2001_1/past/pastprog/past.pdf) (accessed 12 January 2017).
- HARVATI, K. 2009. Into Eurasia: a geometric morphometric re-assessment of the Upper Cave (Zhoukoudian) specimens. *Journal of Human Evolution* 57: 751–62. <https://doi.org/10.1016/j.jhevol.2009.07.008>
- HAYES, S. 2014. Facial approximation of 'Angel': case-specific methodological review. *Forensic Science International* 237: e30–41. <https://doi.org/10.1080/09647775.2015.1054417>
- 2016. Faces in the museum: revising the methods of facial reconstructions. *Museum Management and Curatorship* 31: 218–45. <https://doi.org/10.1080/09647775.2015.1054417>
- HAYES, S., T. SUTIKNA & M. MORWOOD. 2013. Faces of *Homo floresiensis* (LB1). *Journal of Archaeological Science* 40: 4400–10. <https://doi.org/10.1016/j.jas.2013.06.028>
- HOLDEN, C. 1998. Kennewick Man realized. *Science* 279: 1137. <https://doi.org/10.1126/science.279.5354.1137a>
- KHAOKHIEW, C. 2004. Geoarchaeology of Tham Lod rockshelter, Changwat Mae Hong Son, northern Thailand. Unpublished MA dissertation, Chulalongkorn University.
- KHLAEWKHAMPUD, V. 2003. Archaeology at the Tham Lod rockshelter: way of life of people in the Late Pleistocene–Early Holocene, in R. Shoocongdej (ed.) *Proceedings of the Ancient Man, Culture and Environment of the Highland in Pang Mapha, Mae Hong Son Province Conference, 20–21 February*: 60–76. Bangkok: Department of Archaeology, Silpakorn University (in Thai).
- KILLARIDIS, S., I. GEORGIAKAKI & C. KATSAROS. 2003. Masseter muscle thickness and maxillary dental arch width. *European Journal of Orthodontics* 25: 259–63. <https://doi.org/10.1093/ejo/25.3.259>
- KUTANAN, W., J. KAMPUANSAI, V. COLONNA, S. NAKBUNLUNG, P. LERTVICHAI, M. SEIELSTAD, G. BERTORELLE & D. KANGWANPONG. 2011. Genetic affinity and admixture of northern Thai people along their migration route in northern Thailand: evidence from autosomal STR loci. *Journal of Human Genetics* 56: 130–37. <https://doi.org/10.1038/jhg.2010.135>
- LIPSON, M., P.-R. LOH, N. PATTERSON, P. MOORJANI, Y.-C. KO, M. STONEKING, B. BERGER & D. REICH. 2014. Reconstructing Austronesian population history in Island Southeast Asia. *Nature Communications* 5: article no. 4689. <https://doi.org/10.1038/ncomms5689>
- MARWICK, B. 2008. Stone artefacts and recent research in the archaeology of mainland Southeast Asian hunter-gatherers. *Before Farming* 2008(4): 1–19. <https://doi.org/10.3828/bfarm.2008.4.1>
- MARWICK, B. & M.K. GAGAN. 2011. Late Pleistocene monsoon variability in northwest Thailand: an oxygen isotope sequence from the bivalve *Margaritanopsis laosensis* excavated in Mae Hong Son Province. *Quaternary Science Reviews* 30: 3088–98. <https://doi.org/10.1016/j.quascirev.2011.07.007>
- MATSUMURA, H. & M.F. OXENHAM. 2014. Demographic transitions and migration in prehistoric East/Southeast Asia through the lens of nonmetric dental traits. *American Journal of Physical Anthropology* 155: 45–65. <https://doi.org/10.1002/ajpa.22537>
- PUAVARANUKROH, P. & S. SRETTABUNJONG. 2011. Facial soft tissue thickness in Thai adult cadavers. *Vajira Medical Journal* 54: 267–79.
- PUREEPATPONG, N. 2006. Recent investigations of early people (late Pleistocene to early Holocene) from Ban Rai and Tham Lod rockshelter sites, Pang Mapha District, Mae Hongson Province, north-western Thailand, in E. Bacus, I. Glover & V. Pigott (ed.) *Uncovering Southeast Asia's past: selected papers from the 10<sup>th</sup> International Conference of the European Association of Southeast Asian Archaeologists*: 38–45. Singapore: NUS Press.
- REIMER, P.J., E. BARD, A. BAYLISS, J.W. BECK, P.G. BLACKWELL, C. BRONK RAMSEY, C.E. BUCK, H. CHENG, R.L. EDWARDS, M. FRIEDRICH, P.M. GROOTES, T.P. GUILDERSON, H. HAFLIDASON, I. HAJDAS, C. HATTÉ, T.J. HEATON, D.L. HOFFMANN, A.G. HOGG, K.A. HUGHEN, K.F. KAISER, B. KROMER, S.W. MANNING, M. NIU, R.W. REIMER, D.A. RICHARDS, E.M. SCOTT, J.R. SOUTHON, R.A. STAFF, C.S.M. TURNEY & J. VAN DER PLICHT. 2013. IntCal13 and Marine13 radiocarbon age calibration curves 0–50,000 years cal BP. *Radiocarbon* 55: 1869–87. [https://doi.org/10.2458/azu\\_js\\_rc.55.16947](https://doi.org/10.2458/azu_js_rc.55.16947)
- RYNN, C., M. WILKINSON & H. PETERS. 2010. Prediction of nasal morphology from the skull. *Forensic Science, Medicine and Pathology* 6: 20–34. <https://doi.org/10.1007/s12024-009-9124-6>
- SANGVICHIAN, S. 1985. Stature estimations from the length of leg bones in Thai and Chinese populations. *Journal of Sarn Siriraj* 37: 215–18 (in Thai).

- SHOONGDEJ, R. (ed.). 2003–2005. Progress report 1–3, Highland Archaeological Project in Pang Mapha phase II. Report prepared for Thailand Research Funds, Bangkok (in Thai).
- 2006. Late Pleistocene activities at the Tham Lod rockshelter in Highland Pang Mapha, Mae Hong Son Province, northwestern Thailand, in E. Bacus, I. Glover & V. Pigott (ed.) *Uncovering Southeast Asia's past: selected papers from the 10<sup>th</sup> Annual Conference of the European Association of Southeast Asian Archaeologists*: 22–37. Singapore: NUS Press.
- (ed.). 2007. Final report of the Highlands Archeology Project in Pang Mapha. Report prepared for Thailand Research Funds, Bangkok (in Thai).
- SONG, W.-C., S.-H. KIM, D.-J. PAIK, S.-H. HAN, K.-S. HU, H.-J. KIM & K.-S. KOH. 2007. Location of the infraorbital and mental foramen with reference to the soft-tissue landmarks. *Plastic and Reconstructive Surgery* 120: 1343–47. <https://doi.org/10.1097/01.prs.0000279558.86727.5a>
- STANDRING, S. (ed.). 2008. *Gray's anatomy: the anatomical basis of clinical practice*. New York: Elsevier.
- STEPHAN, C.N. 2002a. Facial approximation: globe projection guideline falsified by exophthalmometry literature. *Journal of Forensic Sciences* 47: 730–35. <https://doi.org/10.1520/JFS15457J>
- 2002b. Position of superciliare in relation to the lateral iris: testing a suggested facial approximation guideline. *Forensic Science International* 130: 29–33. [https://doi.org/10.1016/S0379-0738\(02\)00279-7](https://doi.org/10.1016/S0379-0738(02)00279-7)
- 2003. Facial approximation: an evaluation of mouth-width determination. *American Journal of Physical Anthropology* 121: 48–57. <https://doi.org/10.1002/ajpa.10166>
- STEPHAN, C.N. & P.L. DAVIDSON. 2008. The placement of the human eyeball and canthi in craniofacial identification. *Journal of Forensic Sciences* 53: 612–19. <https://doi.org/10.1111/j.1556-4029.2008.00718.x>
- STEPHAN, C.N. & S. MURPHY. 2008. Mouth width prediction in craniofacial identification: cadaver tests of four recent methods, including two techniques for edentulous skulls. *Journal of Forensic Odonto-Stomatology* 26(1): 2–7.
- STEPHAN, C.N. & E.K. SIMPSON. 2008. Facial soft tissue depths in craniofacial identification (part 1): an analytical review of the published adult data. *Journal of Forensic Sciences* 53: 1257–72. <https://dx.doi.org/10.1111/j.1556-4029.2008.00852.x>
- STEPHAN, C.N., A.J.R. HUANG & P.L. DAVIDSON. 2009. Further evidence on the anatomical placement of the human eyeball for facial approximation and craniofacial superimposition. *Journal of Forensic Sciences* 54: 267–69. <https://doi.org/10.1111/j.1556-4029.2008.00982.x>
- SUN, H., C. ZHOU, X. HUANG, K. LIN, L. SHI, L. YU, S. LIU, J. CHU & Z. YANG. 2013. Autosomal STRs provide genetic evidence for the hypothesis that Tai people originate from southern China. *PLoS ONE* 8: e60822. <https://doi.org/10.1371/journal.pone.0060822>
- VELEMÍNSKÁ, J., J. BRŮŽEK, P. VELEMÍNSKÝ, L. BIGONI, A. ŠEFČÁKOVÁ & S. KATINA. 2008. Variability of the Upper Palaeolithic skulls from Předmostí near Přerov (Czech Republic): craniometric comparison with recent human standards. *HOMO: Journal of Comparative Human Biology* 59: 1–26. <https://doi.org/10.1016/j.jchb.2007.12.003>
- WANGKUMHANG, P., P.J. SHAW, K. CHAICHOMPUP, C. NGAMPHIW, A. ASSAWAMAKIN, M. NUINOON, O. SRIPICHAI, S. SVASTI, S. FUCHAROEN & V. PRAPHANPHOJ. 2013. Insight into the peopling of mainland southeast Asia from Thai population genetic structure. *PLoS ONE* 8: e79522. <https://doi.org/10.1371/journal.pone.0079522>
- WATTANAPITUKSAKUL, S. 2006. Late Pleistocene mammal teeth from the Tham Lod rockshelter, Amphoe Pang Mapha, Changwat Mae Hong Son. Unpublished MSc dissertation, Department of Geology, Chulalongkorn University.
- WHITNALL, S. 1911. On a tubercle on the malar bone, and on the lateral attachments of the tarsal plates. *Journal of Anatomy and Physiology* 45: 426–32.
- WILKINSON, C., M. MOTWANI & E. CHIANG. 2003. The relationship between the soft tissues and the skeletal detail of the mouth. *Journal of Forensic Sciences* 48: 728–32. <https://doi.org/10.1520/JFS2002412>

Received: 13 January 2016; Accepted: 1 September 2016; Revised: 12 September 2016