

Access  
leading  
journals in  
your subject

# Cambridge Core

Explore today at [cambridge.org/core](https://www.cambridge.org/core)

Cambridge Core



## CONTENTS

### Breeding and genetics

- Mrode, R., Tarekegn, G. M., Mwacharo, J. M. and Dijkeng, A.*  
Invited review: Genomic selection for small ruminants in developed countries: how applicable for the rest of the world? 1333
- Xiao, P., Niu, L. L., Zhao, Q. J., Chen, X. Y., Wang, L. J., Li, L., Zhang, H. P., Guo, J. Z., Xu, H. Y. and Zhong, T.*  
New insights into mitogenomic phylogeny and copy number in eight indigenous sheep populations based on the ATP synthase and cytochrome c oxidase genes 1341
- Mouresan, E. F., Cañas-Álvarez, J. J., González-Rodríguez, A., Munilla, S., Altarriba, J., Díaz, C., Baró, J. A., Molina, A., Piedrafita, J. and Varona, L.*  
Evaluation of the potential use of a meta-population for genomic selection in autochthonous beef cattle populations 1350
- Terakado, A. P. N., Costa, R. B., de Camargo, G. M. F., Irano, N., Bresolin, T., Takada, L., Carvalho, C. V. D., Oliveira, H. N., Carneiro, R., Baldi, F. and de Albuquerque, L. G.*  
Genome-wide association study for growth traits in Nelore cattle 1358
- Drobik-Czwarno, W., Wolc, A., Fulton, J. E., Arango, J., Jankowski, T., O'Sullivan, N. P. and Dekkers, J. C. M.*  
Identifying the genetic basis for resistance to avian influenza in commercial egg layer chickens 1363

### Nutrition

- Wan, D., Zhang, Y. M., Wu, X., Lin, X., Shu, X. G., Zhou, X. H., Du, H. T., Xing, W. G., Liu, H. N., Li, L., Li, Y. and Yin, Y. L.*  
Maternal dietary supplementation with ferrous N-carbamylglycinate chelate affects sow reproductive performance and iron status of neonatal piglets 1372
- Gonçalves, M. A. D., Tokach, M. D., Bello, N. M., Touchette, K. J., Goodband, R. D., DeRouchey, J. M., Woodworth, J. C. and Dritz, S. S.*  
Dose-response evaluation of the standardized ileal digestible tryptophan : lysine ratio to maximize growth performance of growing-finishing gilts under commercial conditions 1380
- Tan, C. Q., Sun, H. Q., Wei, H. K., Tan, J. J., Long, G., Jiang, S. W. and Peng, J.*  
Effects of soluble fiber inclusion in gestation diets with varying fermentation characteristics on lactational feed intake of sows over two successive parities 1388
- Fischer, A., Friggens, N. C., Berry, D. P. and Faverdin, P.*  
Isolating the cow-specific part of residual energy intake in lactating dairy cows using random regressions 1396
- Sandri, E. C., Camêra, M., Sandri, E. M., Harvatine, K. J. and De Oliveira, D. E.*  
Peroxisome proliferator-activated receptor gamma (PPAR $\gamma$ ) agonist fails to overcome *trans*-10, *cis*-12 conjugated linoleic acid (CLA) inhibition of milk fat in dairy sheep 1405
- Johnson, K. F., Chancellor, N., Burn, C. C. and Wathes, D. C.*  
Analysis of pre-weaning feeding policies and other risk factors influencing growth rates in calves on 11 commercial dairy farms 1413

### Physiology and functional biology

- Jaramillo, M. L., Pereira, A. G., Davico, C. E., Nezzi, L., Ammar, D., Müller, Y. M. R. and Nazari, E. M.*  
Evaluation of reference genes for reverse transcription-quantitative PCR assays in organs of zebrafish exposed to glyphosate-based herbicide, Roundup 1424
- Gao, Y., Qimuge, N. R., Qin, J., Cai, R., Li, X., Chu, G. Y., Pang, W. J. and Yang, G. S.*  
Acute and chronic cold exposure differentially affects the browning of porcine white adipose tissue 1435
- Lam, S., Munro, J. C., Zhou, M., Guan, L. L., Schenkel, F. S., Steele, M. A., Miller, S. P. and Montanholi, Y. R.*  
Associations of rumen parameters with feed efficiency and sampling routine in beef cattle 1442
- Erdmann, S., Mohr, E., Derno, M., Tuchscherer, A., Schäff, C., Börner, S., Kautzsch, U., Kuhla, B., Hammon, H. M. and Röntgen, M.*  
Indices of heart rate variability as potential early markers of metabolic stress and compromised regulatory capacity in dried-off high-yielding dairy cows 1451

### Welfare, behaviour and health management

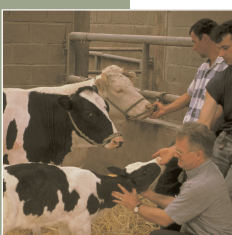
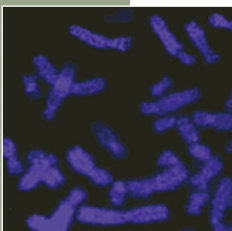
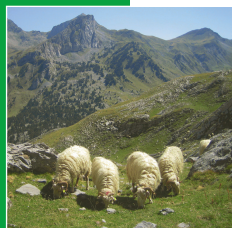
- Dolecheck, K. and Bewley, J.*  
Animal board invited review: Dairy cow lameness expenditures, losses and total cost 1462
- Duval, J. E., Bareille, N., Madouasse, A., de Joybert, M., Sjöström, K., Emanuelson, U., Bonnet-Beaugrand, F. and Fourichon, C.*  
Evaluation of the impact of a Herd Health and Production Management programme in organic dairy cattle farms: a process evaluation approach 1475
- Paudyal, S., Maunsell, F. P., Richeson, J. T., Risco, C. A., Donovan, D. A. and Pinedo, P. J.*  
Rumination time and monitoring of health disorders during early lactation 1484
- Li, C., Lesuisse, J., Schallier, S., Clímaco, W., Wang, Y., Bautil, A., Everaert, N. and Buyse, J.*  
The effects of a reduced balanced protein diet on litter moisture, pododermatitis and feather condition of female broiler breeders over three generations 1493

### Livestock farming systems

- Petit, D. and Boujenane, I.*  
Importance of determining the climatic domains of sheep breeds 1501
- Theodoridis, A., Ragkos, A., Rose, G., Roustemis, D. and Arsenos, G.*  
Defining the breeding goal for a sheep breed including production and functional traits using market data 1508
- Theodoridis, A., Ragkos, A., Rose, G., Roustemis, D. and Arsenos, G.*  
Defining the breeding goal for a sheep breed including production and functional traits using market data – ERRATUM 1516
- Gizaw, S. and Tegegne, A.*  
Bio-economic and operational feasibility of introducing oestrus synchronization and artificial insemination in simulated smallholder sheep breeding programmes 1517

### Quality of animal products

- de Tonnac, A. and Mouro, J.*  
Effect of dietary sources of n-3 fatty acids on pig performance and technological, nutritional and sensory qualities of pork 1527
- Puntigam, R., Schedle, K., Schwarz, C., Wanzenböck, E., Eipper, J., Lechner, E.-M., Yin, L. and Gierus, M.*  
Very high expander processing of maize on animal performance, digestibility and product quality of finishing pigs and broilers 1536
- Mateo, L., Delgado, P., Ortuño, J. and Bañón, S.*  
Maternal grazing on stubble and Mediterranean shrubland improves meat lipid profile in light lambs fed on concentrates 1547



Cambridge Core

For further information about this journal  
please go to the journal web site at:  
[cambridge.org/animal](http://cambridge.org/animal)



MIX  
Paper from  
responsible sources  
FSC® C007785

CAMBRIDGE  
UNIVERSITY PRESS