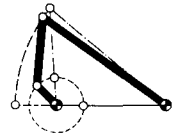
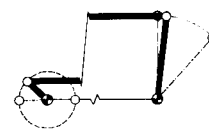
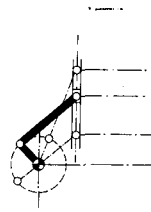
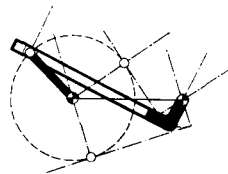
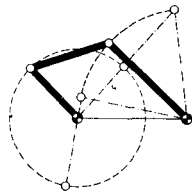


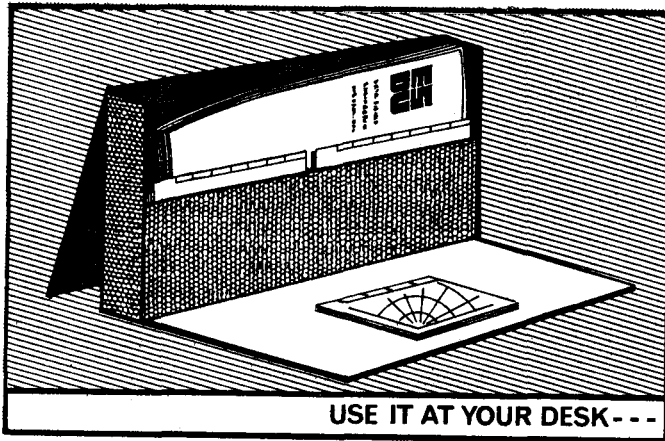


four-bar linkages

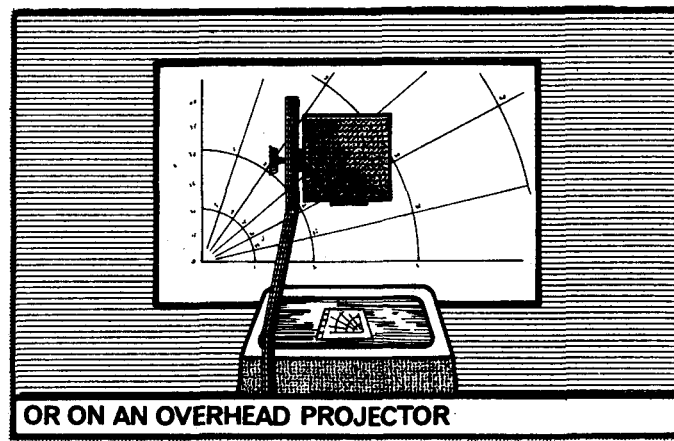
Item No. 76005 (ME1)



Kinematic and dynamic data for crank-rocker and slider-crank linkages



USE IT AT YOUR DESK ---



OR ON AN OVERHEAD PROJECTOR

Between the sketch and the successful design— you need ESDU Data Items

Design engineers need accurate, reliable information on which to base their designs and specifications. But much of the information available in essential areas is conflicting. Values for vital parameters such as pressure drops or stress concentrations in one source often differ widely from those in another.

Unless you choose the *best* values, you risk over-specifying materials and dimensions, with consequent cost penalties. Or you may under-specify, which could lead to unscheduled stoppages and breakdowns.

Engineering Sciences Data Unit can help you get things right, first time.

ESDU produces thoroughly evaluated and authoritative engineering design data in

aeronautical, chemical, mechanical and structural engineering. Committees of practising engineers and scientists monitor and guide qualified ESDU staff who sift and evaluate all the available data on each topic. Sometimes hundreds of separate references are involved.

ESDU issues the results of this work as Data Items in which information is presented in a way best suited to the engineer. Graphs, tables, flow charts, equations and presentation in both British and SI units are all combined to help you to get your design and specifications drawn up precisely and accurately.

ESDU's work is sponsored by the Institutions of Chemical, Mechanical and Structural Engineers and by the Royal Aeronautical Society.

Users of ESDU Data Items may become Associates of ESDU. As an

Associate, you would be entitled to a range of valuable services. If you want to know more about ESDU and the wide range of data always available, contact us for full details.

For all your sales enquiries, write or phone:

Engineering Data Sales Limited
34 Haymarket
London SW1Y 4HZ
United Kingdom
01-839 3002



Telex Endasa London 916168

VOLUME 81
NUMBER 794
FEBRUARY 1977

THE **aeronautical** JOURNAL

*Incorporating The Institution of Aeronautical Engineers and
The Helicopter Association of Great Britain*
Published Monthly

contents

*Editor: G. R. Wrixon, AMRAeS.
Assistant Editors:
Jay Wolff, David Scallon.*

*Secretary of the Society:
E. M. J. Schaffter, MA, CEng,
MRAeS.
4 Hamilton Place, London
W1V 0BQ. Tel: 01-499 3515.
Telegrams: Didaskalos, London, W1.*

*Reproduction of any of the papers
published in this journal is not
permitted without the written
consent of the Editor.*

*None of the papers or paragraphs
must be taken as expressing the
opinion of the Council unless
otherwise stated.*

*Advertisements:
J. G. Heller,
Cheiron Press Ltd,
8/10 Parkway,
London NW1 7AD.
Tel: 01-267 1285*

*Printed by
Lewes Press Ltd,
Lewes, Sussex, England.*

*Subscriptions: £36.00 per annum,
post free.*

*Single copies, including back
numbers: £3.00.*

*Published by
The Royal Aeronautical Society,
4 Hamilton Place,
London W1V 0BQ, England.*

ISSN: 0001-9240

H. P. Y. Hitch
COMPUTER AIDED AIRCRAFT PROJECT DESIGN 51

D. E. H. Balmford
THE CONTROL OF VIBRATION IN HELICOPTERS 63

R. J. H. Wanhill
AMBIENT TEMPERATURE CRACK GROWTH IN TITANIUM ALLOYS
AND ITS SIGNIFICANCE FOR AIRCRAFT STRUCTURES 68

TECHNICAL NOTES

S. S. P. Rao, V. Mukhopadhyay and J. S. Rao
Lift and moment fluctuations of a cambered aerofoil under
nonconvecting streamwise gust 83

G. J. Turvey
Buckling of simply supported cross-ply cylindrical panels on elastic
foundations 88

Library, Reviews, Additions and Reports 92

Cover picture:
Although the vibration of helicopters cannot be eliminated, modern techniques have enabled its effects to be minimised. In this issue D. E. H. Balmford discusses the problems involved in the initial design stage for the elimination, as far as possible, of all forms of aeroelastic and aeromechanical instabilities. The Lynx shown is undergoing a standard shake test as part of the development programme.

The Royal Aeronautical Society

FOUNDED 1866

INCORPORATED BY ROYAL CHARTER 1949

Patron: HER MAJESTY THE QUEEN

COUNCIL

President: CHARLES ABELL, OBE, CEng, HonFSLAET, HonFRAeS

President-Elect: HANDEL DAVIES, CB, MSc, CEng, FRAeS

Vice-Presidents:

PROF. L. F. CRABTREE, PhD, BSc, DIC, CEng, AFAIAA, FRAeS
M. J. BRENNAN, BSc, CEng, FIMechE, FRAeS
R. P. PROBERT, CB, MA, CEng, FRAeS

Past Presidents:

DR. G. S. HISLOP, CBE, HonDSc, PhD, BSc, ARCST, CEng, FRAeS
B. P. LAIGHT, OBE, MSc, CEng, MIMechE, FRAeS
AIR MARSHAL SIR CHARLES PRINGLE, KBE, MA, CEng, FRAeS, RAF (Ret'd)

Members:

A. J. ADCOCK, BSc(Eng), AMRAeS
AIR CDRE F. R. BANKS, CB, OBE, HonCGIA, CEng, HonFAIAA, HonFRAeS,
RAF (Ret'd)
F. R. J. BRITTEN, CBE, CEng, MRAeS
CAPTAIN E. M. BROWN, CBE, DSC, AFC, MA, FRAeS, RN (Ret'd)
J. H. COOK, CEng, MRAeS
F. W. FAHY, FRAeS (*President, New Zealand Division*)
N. FALCONER, MRAeS
PROF. M. G. FARLEY, CEng, FIMechE, FIProdE, MBIM, FRAeS
CAPTAIN J. R. HEAP, MRAeS (*President, Rhodesia Division*)
P. A. HEARNE, DCAe, DLC, CEng, FRAeS
DR W. F. HILTON, PhD, DSc, CEng, AFAIAA, FRAeS
DR J. LASCELLES, BSc(Tech), AMRAeS (*Chairman, Graduates' and Students'
Section*)
F. J. LOW, MRAeS
E. W. R. MARTIN, MNDTS, LIM, AMRAeS
AIR CDRE J. R. MORGAN, OBE, BSc(Eng), CEng, FIMechE, FRAeS, RAF (Ret'd)
PROF. G. M. MOSS, MSc, CEng, MRAeS (*Chairman, Branches Committee*)
DR E. S. MOULT, CBE, BSc, CEng, FIMechE, HonFRAeS
AIR CDRE F. C. PADFIELD, CBE, BSc, CEng, MRAeS (*Chairman, Astronautics and
Guided Flight Section*)
G. K. C. PARDOE, BSc(Eng), DLC, CEng, FBIS, FRAeS
V. A. B. ROGERS, MSc, CEng, FIMechE, FRAeS
J. S. SHAPIRO, Dipl Ing, CEng, FRAeS (*Chairman, Rotorcraft Section*)
DR B. W. SKEWS, PhD, MSc(Eng), CEng, MRAeS (*President, Southern Africa
Division*)
J. T. STAMPER, MA, CEng, FRAeS
G. T. WANSBROUGH-WHITE, AMRAeS
J. M. WARNER, BSc(Eng), CEng, FRAeS (*President, Australian Division*)
K. G. WILKINSON, HonDSc, BSc, DIC, FCGI, CEng, FCIT, FRAeS

Officers:

Hon. Treasurer: C. F. HUGHESDON, AFC, FRAeS
Solicitor: C. L. BYWATERS, Associate RAeS
Secretary: E. M. J. SCHAFFTER, MA, CEng, MRAeS