

CAMBRIDGE

JOURNALS



Journal of Dairy Research

Published for the Institute of Food Research and the Hannah Research Institute

Journal of Dairy Research

is available online at:
<http://journals.cambridge.org/dar>

To subscribe contact Customer Services

in Cambridge:
Phone +44 (0)1223 326070
Fax +44 (0)1223 325150
Email journals@cambridge.org

in New York:
Phone +1 (845) 353 7500
Fax +1 (845) 353 4141
Email
subscriptions_newyork@cambridge.org

Executive Editors

D. G. Chamberlain, Hannah Research Park, UK
E. C. Needs, Hannah Research Park, UK

Journal of Dairy Research publishes original scientific research on all aspects of mammary biology and dairy science including: animal husbandry; the physiology and biochemistry of lactation; milk production; biotechnology and food science; relevant studies in bacteriology, enzymology and immunology; and the development of methods relevant to these subjects.

Price information is available at:
<http://journals.cambridge.org/dar>

Free email alerts

Keep up-to-date with new material – sign up at
<http://journals.cambridge.org/alerts>

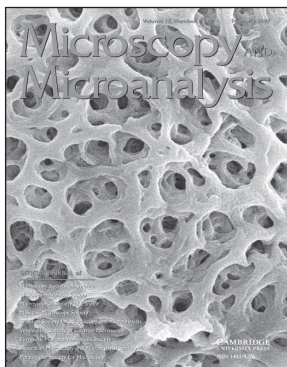
For free online content visit:
<http://journals.cambridge.org/dar>



**CAMBRIDGE
UNIVERSITY PRESS**

CAMBRIDGE

JOURNALS



Microscopy AND Microanalysis

Published for the Microscopy Society of America

Microscopy and Microanalysis

is available online at:

<http://journals.cambridge.org/mam>

Editor-in-Chief

Robert L. Price, University of South Carolina, USA

**To subscribe contact
Customer Services**

in Cambridge:

Phone +44 (0)1223 326070

Fax +44 (0)1223 325150

Email journals@cambridge.org

in New York:

Phone +1(845) 353 7500

Fax +1 (845) 353 4141

Email

subscriptions_newyork@cambridge.org

Microscopy and Microanalysis, a peer-reviewed bimonthly journal publishes original research papers in the fields of microscopy, imaging, and compositional analysis. The journal provides significant articles that describe new and existing techniques and instrumentation, as well as the applications of these to the imaging and analysis of microstructure.

Price information is available at:
<http://journals.cambridge.org/mam>

Free email alerts

Keep up-to-date with new material – sign up at

<http://journals.cambridge.org/alerts>

For free online content visit:
<http://journals.cambridge.org/mam>



**CAMBRIDGE
UNIVERSITY PRESS**

CAMBRIDGE

JOURNALS

Epidemiology and Infection

Editor-in-Chief

Norman Noah, London School of Hygiene and Tropical Medicine, UK

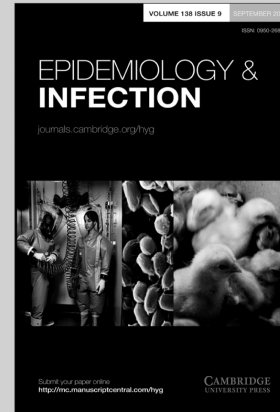
Epidemiology and Infection publishes original reports and reviews on all aspects of infection in humans and animals. Particular emphasis is given to the epidemiology, prevention and control of infectious diseases. The field covered is broad and includes the zoonoses, tropical infections, food hygiene, vaccine studies, statistics and the clinical, social and public health aspects of infectious disease. Papers covering microbiology and immunology, which have an epidemiological relevance, are part of this broad field. Papers come from medical and veterinary scientists worldwide. It has become the key periodical in which to find the latest reports on recently discovered infections and new technology. For those concerned with policy and planning for the control of infections, the papers on mathematical modelling of epidemics caused by historical, current and emergent infections, will be of particular value.

Price information

is available at: <http://journals.cambridge.org/hyg>

Free email alerts

Keep up-to-date with new material – sign up at
<http://journals.cambridge.org/alerts>



Epidemiology and Infection
is available online at:
<http://journals.cambridge.org/hyg>

To subscribe contact Customer Services

in Cambridge:

Phone +44 (0)1223 326070
Fax +44 (0)1223 325150
Email journals@cambridge.org

in New York:

Phone +1 (845) 353 7500
Fax +1 (845) 353 4141
Email
subscriptions_newyork@cambridge.org

For free online content visit:
<http://journals.cambridge.org/hyg>



CAMBRIDGE
UNIVERSITY PRESS

CAMBRIDGE

JOURNALS

Journal of Helminthology

Editor

John Lewis, Royal Holloway, University of London, UK

Journal of Helminthology publishes original papers and review articles on all aspects of pure and applied helminthology, particularly those helminth parasites of environmental health, medical or veterinary importance. Research papers on helminths in wildlife hosts, including plant and insect parasites, are also published along with taxonomic papers contributing to the systematics of a group. The journal will be of interest to academics and researchers involved in the fields of human and veterinary parasitology, public health, microbiology, ecology, epidemiology and biochemistry.

Price information

is available at: <http://journals.cambridge.org/jhl>

Free email alerts

Keep up-to-date with new material – sign up at
<http://journals.cambridge.org/jhl-alerts>



Journal of Helminthology

is available online at:

<http://journals.cambridge.org/jhl>

To subscribe contact Customer Services

in Cambridge:

Phone +44 (0)1223 326070

Fax +44 (0)1223 325150

Email journals@cambridge.org

in New York:

Phone +1 (845) 353 7500

Fax +1 (845) 353 4141

Email

subscriptions_newyork@cambridge.org

For free online content visit:
<http://journals.cambridge.org/jhl>



CAMBRIDGE
UNIVERSITY PRESS

CAMBRIDGE

JOURNALS

Journal of Tropical Ecology

Editor

Ian Turner, Winchelsea, UK

Journal of Tropical Ecology publishes papers in the important and now established field of the ecology of tropical regions, either arising from original research (experimental or descriptive) or forming significant reviews. First published in 1985, *Journal of Tropical Ecology* has become a major international ecological journal. With clear, stimulating and readable reports of recent research findings, the journal provides a platform for the dissemination of information on all aspects of tropical communities and ecosystems

Price information

is available at: <http://journals.cambridge.org/tro>

Free email alerts

Keep up-to-date with new material – sign up at
<http://journals.cambridge.org/tro-alerts>



Journal of Tropical Ecology
is available online at:
<http://journals.cambridge.org/tro>

To subscribe contact Customer Services

in Cambridge:

Phone +44 (0)1223 326070
Fax +44 (0)1223 325150
Email journals@cambridge.org

in New York:

Phone +1 (845) 353 7500
Fax +1 (845) 353 4141
Email
subscriptions_newyork@cambridge.org

For free online content visit:
<http://journals.cambridge.org/tro>



CAMBRIDGE
UNIVERSITY PRESS

CAMBRIDGE

JOURNALS

The Lichenologist

Published on behalf of The British Lichen Society

Senior Editor

Peter D. Crittenden, University of Nottingham, UK

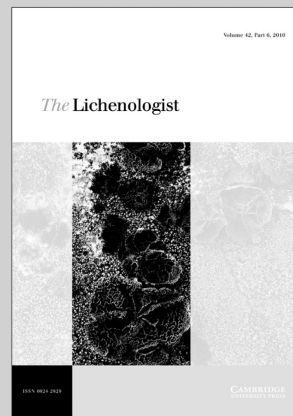
The Lichenologist is the premier scientific journal devoted exclusively to the study of lichens worldwide. As the leading forum for the dissemination of new concepts and topical reviews, *The Lichenologist* reaches more scientists concerned with the study of lichens and lichen symbionts than any other single journal. All aspects of lichenology are considered including systematics and phylogenetics; molecular biology; ultrastructure, anatomy and morphology; secondary chemistry, effects of pollutants and use as bioindicators; biogeography.

Price information

is available at: <http://journals.cambridge.org/lic>

Free email alerts

Keep up-to-date with new material – sign up at
<http://journals.cambridge.org/lic-alerts>



The Lichenologist
is available online at:
<http://journals.cambridge.org/lic>

To subscribe contact Customer Services

in Cambridge:
Phone +44 (0)1223 326070
Fax +44 (0)1223 325150
Email journals@cambridge.org

in New York:
Phone +1 (845) 353 7500
Fax +1 (845) 353 4141
Email
subscriptions_newyork@cambridge.org

For free online content visit:
<http://journals.cambridge.org/lic>



CAMBRIDGE
UNIVERSITY PRESS

CAMBRIDGE

JOURNALS

Animal Health Research Reviews

Published in collaboration with the Conference of Research
Workers in Animal Diseases

Editor-in-Chief

C. Gyles, *University of Guelph, Canada*

Animal Health Research Reviews provides an international forum for the publication of reviews and commentaries on all aspects of animal health. Papers include in-depth analyses and broader overviews of all facets of health and science in both domestic and wild animals. Major subject areas include physiology and pharmacology, parasitology, bacteriology, food and environmental safety, epidemiology and virology. The journal will be of interest to researchers involved in animal health, parasitologists, food safety experts and academics interested in all aspects of animal production and welfare.

For free online content visit:
<http://journals.cambridge.org/ahrsample>

Free email alerts

Keep up-to-date with new content
<http://journals.cambridge.org/ahr-alerts>



Animal Health Research Reviews
is available online at:
<http://journals.cambridge.org/ahr>

To subscribe contact Customer Services

Americas:

Phone +1 (845) 353 7500
Fax +1 (845) 353 4141
Email
subscriptions_newyork@cambridge.org

Rest of world:

Phone +44 (0)1223 326070
Fax +44 (0)1223 325150
Email journals@cambridge.org

Price Information

is available at:
<http://journals.cambridge.org/ahr>



CAMBRIDGE
UNIVERSITY PRESS

Parasitology

Back volumes. Vols. 1–71: Inquiries should be addressed to Wm. Dawson & Sons Ltd, Cannon House, Folkestone, Kent. Vols. 72 onwards: quotations for parts still in print may be obtained from Cambridge or the American Branch of Cambridge University Press.

Copying. This journal is registered with the Copyright Clearance Center, 222 Rosewood Drive, Danvers, MA 01923, USA. Organizations in the USA who are also registered with C.C.C. may therefore copy material (beyond the limits permitted by sections 107 and 108 of US copyright law) subject to payment to C.C.C. of the per-copy fee of \$16.00. This consent does not extend to multiple copying for promotional or commercial purposes. Code 0031–1820/2011 \$16.00.

Organizations authorized by the Copyright Licensing Agency may also copy material subject to the usual conditions.

ISI Tear Sheet Service. 3501 Market Street, Philadelphia, Pennsylvania 19104, USA, is authorized to supply single copies of separate articles for private use only.

For all other use, permission should be sought from Cambridge or the American Branch of Cambridge University Press.

Claims for missing issues can only be considered if made immediately after receipt of the subsequent issue.

Advertising. Details of advertising in Parasitology may be obtained from the publisher.

Online submission. Authors are encouraged to submit their manuscripts online. Go to <http://mc.manuscriptcentral.com/par/> to open an author's account for Parasitology. Manuscript Central is helping to improve the speed of the publication process for the journal.

Front Cover illustration: (A) Collection of ticks from the environment. (B) Engorged females attached to dog skin. From Filipe Dantas-Torres *et al.* Vol. 138(4) pp. 527–536.

© Cambridge University Press 2011

The Edinburgh Building, Cambridge CB2 8RU, United Kingdom
32 Avenue of The Americas, New York, NY 10013-2473, USA
477 Williamstown Road, Port Melbourne, VIC 3207, Australia
C/ Orense, 4, Planta 13 28020 Madrid, Spain
Lower Ground Floor, Nautica Building, The Water Club, Beach Road,
Granger Bay, 8005 Cape Town, South Africa

Printed in the United Kingdom at the University Press, Cambridge

PARASITOLOGY

CONTENTS

RESEARCH ARTICLES

- Cryptosporidium* cell culture infectivity assay design**
B. J. King, A. R. Keegan, B. S. Robinson and P. T. Monis 671
- Molecular cloning and characterization of a M17 leucine aminopeptidase of *Cryptosporidium parvum***
J.-M. Kang, H.-L. Ju, W.-M. Sohn and B.-K. Na 682
- Study on ovine abortion associated with *Toxoplasma gondii* in affected herds of Khorasan Razavi Province, Iran based on PCR detection of fetal brains and maternal serology**
M. Rassouli, G. R. Razmi, M. R. Bassami, A. R. Movassaghi and M. Azzadeh 691
- A new actinospore type Unicapsulactinomyxon (Myxozoa), infecting the marine polychaete, *Diopatra neapolitana* (Polychaeta: Onuphidae) in the Aveiro Estuary (Portugal)**
Luís F. Rangel, Gábor Cech, Csaba Székely and Maria J. Santos 698
- Afternoon shedding of a new species of *Isospora* (Apicomplexa) in the endangered Regent Honeyeater (*Xanthomyza phrygia*)**
Victoria Morin-Adeline, Larry Vogelnest, Navneet K. Dhand, Michael Shiels, Warrick Angus and Jan Šlapeta 713
- Bioinformatic analysis of glycogen synthase kinase 3: human versus parasite kinases**
Dmitry I. Osolodkin, Natalia V. Zakharevich, Vladimir A. Palyulin, Valery N. Danilenko and Nikolay S. Zefirov 725
- Human recombinant antibodies against *Trypanosoma cruzi* ribosomal P2 β protein**
Vanina Grippo, Leticia L. Nilborski, Karina A. Gomez and Mariano J. Levin 736
- Beak condition drives abundance and grooming-mediated competitive asymmetry in a poultry ectoparasite community**
Brian L. Chen, Kathryn L. Haith and Bradley A. Mullens 748
- Biogeographical region and host trophic level determine carnivore endoparasite richness in the Iberian Peninsula**
L. M. Rosalino, M. J. Santos, C. Fernandes and M. Santos-Reis 758
- Diversity in the 18S SSU rRNA V4 hyper-variable region of *Theileria* spp. in Cape buffalo (*Syncerus caffer*) and cattle from southern Africa**
Ben J. Mans, Ronel Pienaar, Abdalla A. Latif and Fred T. Potgieter 766
- The influence of water on the migration of infective trichostrongyloid larvae onto grass**
J. van Dijk and E. R. Morgan 780
- Parasites in a man-made landscape: contrasting patterns of trematode flow in a fishpond area in Central Europe**
M. Soldánová, A. Faltýnková, T. Scholz and A. Kostadinova 789