

INVASIVE PLANT SCIENCE AND MANAGEMENT



VOLUME 10 | NUMBER 4
OCTOBER–DECEMBER 2017

<https://doi.org/10.1017/imp.2017.40> Published online by Cambridge University Press



Invasive Plant Science and Management

Published quarterly by the Weed Science Society of America

Antonio DiTommaso, *Editor*

The Weed Science Society of America (WSSA) publishes original research and scholarship in the form of peer-reviewed articles in three international journals. *Weed Science* is focused on understanding “why” phenomena occur in agricultural crops. As such, it focuses on fundamental research directly related to all aspects of weed science in agricultural systems. *Weed Technology* focuses on understanding “how” weeds are managed. As such, it is focused on more applied aspects concerning the management of weeds in agricultural systems. *Invasive Plant Science and Management* is a broad-based journal that focuses not only on fundamental and applied research on invasive plant biology, ecology, management, and restoration of invaded non-crop areas, but also on the many other aspects relevant to invasive species, including educational activities, policy issues, and case study reports.

Associate Editors (Assignment Year)

Edith B. Allen, Botany & Plant Sciences Department, University of California, Riverside, CA 92521 (2008)
Jacob N. Barney, Department of Plant Pathology, Physiology, & Weed Science, Virginia Tech, Blacksburg, VA 24061 (2012)
John Cardina, Department of Horticulture & Crop Science, Ohio State University, Wooster, OH 44691 (2008)
Stephen F. Enloe, Center for Aquatic and Invasive Plants, University of Florida, Gainesville, FL 32653 (2010)
Songlin Fei, Department of Forestry and Natural Resources, Purdue University, West Lafayette, IN 47907 (2015)
Guillaume Fried, Plant Health Laboratory, Anses, 34988 Montferrier-sur-Lez, France (2017)
Catherine S. Jarnevich, US Geological Survey, Fort Collins, CO 80526 (2015)
Marie Jasieniuk, University of California, Davis CA 95616 (2017)
Darren J. Kriticos, CSIRO, Canberra, ACT 2601, Australia (2010)
James K. Leary, Department of Natural Resources and Environmental Management, University of Hawaii at Manoa, Honolulu, HI 96822 (2014)
Kelly G. Lyons, Department of Biology, Trinity University, San Antonio, TX 78212 (2008)
Jane M. Mangold, Department of Land Resources and Environmental Sciences, Montana State University, Bozeman, MT 59717 (2014)
John A. Randall, The Nature Conservancy, University of California, Davis, CA 95616 (2008)
Rob J. Richardson, Department of Crop Science, North Carolina State University, Raleigh, NC 27695 (2014)
Steve S. Seefeldt, UAF Cooperative Extension Service Tanana District, Fairbanks, AK 99775 (2014)
Ryan M. Wersal, Lonza Specialty Ingredients, Alpharetta, GA 30004 (2014)

Tracy Candelaria, *Managing Editor*

Officers of the Weed Science Society of America

Janis McFarland, <i>President</i>	Hilary Sandler, <i>Secretary</i>
Scott Senseman, <i>President-Elect</i>	Rick Boydston, <i>Treasurer</i>
Larry Steckel, <i>Vice President</i>	Sarah Ward, <i>Director of Publications</i>
Kevin Bradley, <i>Past President</i>	Mark Bernards, <i>Chair, Constitution and Operating Procedures</i>

Invasive Plant Science and Management (ISSN 1939-7291) is an official publication of the Weed Science Society of America, 12011 Tejon Street, Suite 700, Westminster, CO 80234 (720-977-7940). It is published quarterly, one volume per year, four issues per year beginning in March.

Membership includes receipt of *Weed Science*, *Weed Technology*, *Invasive Plant Science and Management*, and the online *WSSA Newsletter*. Dues should be sent to WSSA, 12011 Tejon Street, Suite 700, Westminster, CO 80234 no later than December 1 of each year. Membership in the society is on a calendar-year basis only.

New subscriptions and renewals begin with the first issue of the current volume. Please visit the *Invasive Plant Science and Management* subscription page at <https://www.cambridge.org/core/journals/invasive-plant-science-and-management/subscribe>; Email: subscriptions_newyork@cambridge.org in USA, journals@cambridge.org outside USA.

Invasive Plant Science and Management publishes four times a year in March, June, September, and December. Annual institutional electronic subscription rates: US \$384.00; UK £267.00.

Please use Editorial Manager to access manuscript submissions (<http://www.editorialmanager.com/ipsm>). Authors are asked to pay \$65 per page as a portion of the cost of publication, plus an additional processing charge of \$55 per manuscript if none of the authors are WSSA members. The Editor can make exceptions in advance when justified.

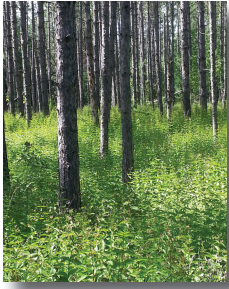
The Weed Science Society of America fully subscribes to the belief that progress in science depends upon the sharing of ideas, information, and materials among qualified investigators. Authors of papers published in *Invasive Plant Science and Management* are therefore encouraged, whenever practicable and when state and federal laws permit, to share genotypically unique, propagative materials they might possess with other workers in the area who request such materials for the purpose of scientific research.

Invasive Plant Science and Management published by the Weed Science Society of America.

Copyright 2017 by the Weed Science Society of America. Printed in USA.

All rights reserved. Reproduction in part or whole prohibited.

Cover Photo: Pale swallow-wort or dog-strangling vine (*Vincetoxicum rossicum*) invasion at a pine plantation in southern Ontario, Canada. Standardized invasion curves would enable establishing comparisons among non-native species, which in turn can help understand what traits may determine lag-times. This information would be invaluable for practitioners looking to select non-native species for eradication measures in order to avoid reaching levels of invasion as that shown in the photo. Photo credit: Pedro Antunes.



INVASIVE PLANT SCIENCE AND MANAGEMENT

Table of Contents

Invited Review

- Constructing Standard Invasion Curves from Herbarium Data—Toward Increased Predictability of Plant Invasions. Pedro M. Antunes and Brandon Schamp. 293

Research and Education

- Not All Roads Lead to Rome: A Meta-analysis of Invasive Plant Impact Methodology. Daniel R. Tekielia and Jacob N. Barney. 304
- Mislabeling of an Invasive Vine (*Celastrus orbiculatus*) as a Native Congener (*C. scandens*) in Horticulture. David N. Zaya, Stacey A. Leicht-Young, Noel B. Pavlovic, Christopher S. Hetrea, and Mary V. Ashley. 313
- Emerging Ornamental Plant Invaders in Urban Areas—*Centranthus ruber* in Cape Town, South Africa as a Case Study. Sjirk Geerts, Taryn Rossenrode, Ulrike M. Irlich, and Vernon Visser. 322
- Canada Thistle (*Cirsium arvense*) Affects Herbage Production in the Northern Great Plains. Travis R. Carter and Rodney G. Lym. 332
- Secondary Invasion and Reinvasion after Russian-Olive Removal and Revegetation. Erin K. Espeland, Jennifer M. Muscha, Joseph Scianna, Robert Kilian, Natalie M. West, and Mark K. Petersen. 340
- Long-Term Efficacy of Glyphosate for Smooth Brome Control in Native Prairie. Jessica I. Slopek and Eric G. Lamb. 350