

Malacosporean myxozoans exploit a diversity of fish hosts

Juliana Naldoni^{1,2}, Edson A. Adriano^{1,3}, Ashlie Hartigan², Carl Sayer⁴ and Beth Okamura²

Research Article

Cite this article: Naldoni J, Adriano EA, Hartigan A, Sayer C, Okamura B (2019). Malacosporean myxozoans exploit a diversity of fish hosts. *Parasitology* **146**, 968–978. <https://doi.org/10.1017/S0031182019000246>

Received: 16 November 2018
Revised: 13 February 2019
Accepted: 14 February 2019
First published online: 12 March 2019

Key words:

Buddenbrockia; Cnidaria; Myxozoa; sporogenesis; SSU rDNA sequence; *Tetracapsuloides*; ultrastructure

Author for correspondence:

Juliana Naldoni, E-mail: jnaldoni@gmail.com

¹Departamento de Ciências Biológicas, Universidade Federal de São Paulo (UNIFESP), Diadema, SP, Brazil; ²Department of Life Sciences, Natural History Museum, Cromwell Road, London SW7 5BD, UK; ³Departamento de Biologia Animal, Instituto de Biologia, Universidade Estadual de Campinas, Campinas, SP, Brazil and ⁴Department of Geography, Environmental Change Research Centre, University College London, Gower Street, London, WC1E 6BT, UK

Abstract

Myxozoans are widespread and common endoparasites of fish with complex life cycles, infecting vertebrate and invertebrate hosts. There are two classes: Myxosporea and Malacosporea. To date about 2500 myxosporean species have been described. By comparison, there are only five described malacosporean species. Malacosporean development in the invertebrate hosts (freshwater bryozoans) has been relatively well studied but is poorly known in fish hosts. Our aim was to investigate the presence and development of malacosporeans infecting a diversity of fish from Brazil, Europe and the USA. We examined kidney from 256 fish belonging variously to the Salmonidae, Cyprinidae, Nemacheilidae, Esocidae, Percidae, Polyodontidae, Serrasalmonidae, Cichlidae and Pimelodidae. Malacosporean infections were detected and identified by polymerase chain reaction and small subunit ribosomal DNA sequencing, and the presence of sporogonic stages was evaluated by ultrastructural examination. We found five malacosporean infections in populations of seven European fish species (brown trout, rainbow trout, white fish, dace, roach, gudgeon and stone loach). Ultrastructural analyses revealed sporogonic stages in kidney tubules of three fish species (brown trout, roach and stone loach), providing evidence that fish belonging to at least three families are true hosts. These results expand the range of fish hosts exploited by malacosporeans to complete their life cycle.

Introduction

Myxozoans are microscopic, obligate, endoparasitic cnidarians with complex life cycles (Okamura *et al.*, 2015a). Transmission from host to host is achieved by multicellular spores whose morphologies have been used extensively for taxonomic purposes. However, as it became clear that convergence in spore morphotypes could be problematic, researchers have increasingly incorporated small subunit ribosomal DNA (SSU rDNA) sequences as additional data for the reliable identification of species (Kent *et al.*, 2001; Atkinson *et al.*, 2015). Myxozoans are comprised of two lineages: the speciose Myxosporea and the species-poor Malacosporea. Collectively there are about 2500 described myxozoan species (Okamura *et al.*, 2018). Myxosporean lifecycles involve annelids as definitive hosts and vertebrates, mainly fishes, as intermediate hosts. Malacosporeans use freshwater bryozoans as definitive hosts and fish as intermediate hosts.

To date only five malacosporean species have been described (Patra *et al.*, 2016). There are two malacosporean genera: *Tetracapsuloides* and *Buddenbrockia*. Species in both genera develop as sac-like or vermiform (myxoworm) stages in the body cavity of their freshwater bryozoan hosts (Hartikainen *et al.*, 2014). Spores produced within sacs and myxoworms are infectious to fish. The only malacosporean whose life cycle has been resolved and whose development in both hosts has been characterized is *Tetracapsuloides bryosalmonae*, the causative agent of salmonid proliferative kidney disease (PKD). *Tetracapsuloides bryosalmonae* develops as sacs in the body cavity of freshwater bryozoans (Anderson *et al.*, 1999; Canning *et al.*, 1999) and as pseudoplasmodia in kidney tubules of salmonid fish (Kent and Hedrick, 1985). Spores released from bryozoans infect fish (Feist *et al.*, 2001) and spores passed with fish urine infect bryozoans (Hedrick *et al.*, 2004; Morris and Adams, 2006).

Recent studies provide evidence for a further 12 undescribed species of malacosporeans from a diversity of bryozoan and fish hosts (Bartošová-Sojtková *et al.*, 2014; Hartikainen *et al.*, 2014; Patra *et al.*, 2016). These results suggest that there is substantially greater diversity of malacosporeans than is currently appreciated and that further investigations may link malacosporeans detected in fish with those detected in bryozoans, thereby resolving life cycles. The detection of undescribed malacosporeans in fish has, however, largely been gained by polymerase chain reaction (PCR) and sequencing of material from fish kidney without ascertaining spore development in the putative fish hosts. It is therefore possible that putative fish hosts may be accidental (Bartošová-Sojtková *et al.*, 2014; Hartikainen *et al.*, 2014). For example, larvae of some nematode parasites (e.g. *Ancylostoma braziliense*, *Ancylostoma caninum*, *Toxocara*

canis and *Gnathostoma spinigerum*) may begin their development in humans but only develop to mature adult worms in their true mammal hosts (Rey, 2008). Similarly, malacosporeans could invade fish as blood stages that are detected by PCR of fish kidney but fish may not support subsequent spore development. Indeed, this has been observed when local *T. bryosalmonae* strains infect exotic rainbow trout in the UK (Bucke *et al.*, 1991; Morris *et al.*, 1997).

The aim of this study was to characterize malacosporeans in a diversity of fish kidney material, employing both molecular and ultrastructural methods. By using this combined approach, we are able to confirm that malacosporeans exploit fish hosts belonging to at least three families. In addition, we are able to resolve a second malacosporean life cycle by linking the vertebrate and invertebrate hosts. Extending our knowledge of malacosporean host diversity is of general importance for understanding biodiversity, ecology and co-evolutionary relationships in freshwater systems and could be relevant for diagnosis and control of emerging diseases in aquaculture or wild fish populations in our changing world.

Materials and methods

A total of 256 fish kidney were screened for the presence of malacosporean DNA. The material we studied was obtained by a mixture of general and targeted sampling. The former involved taking advantage of ongoing project work sampling fish in the River Stour (electrofishing) and in Blickling Lake (rod fishing), and screening for fish parasites in practical classes in Switzerland (caught by net). More targeted sampling included material collected during surveys for parasites in paddlefish in the USA and by specifically sampling fish on farms in Brazil. Nineteen fish species belonging to nine fish families (Salmonidae, Cyprinidae, Nemacheilidae, Esocidae, Percidae, Polyodontidae, Serrasalmidae, Cichlidae and Pimelodidae) were sampled from the UK, Switzerland, Brazil and the USA (Tables 1 and 2). We included archived samples of brown and rainbow trout that were known to be infected by *T. bryosalmonae* to provide comparative material because the development of *T. bryosalmonae* is well known. The fish were euthanized in Brazil by benzocaine overdose, in accordance with Brazilian law (Federal Law No. 11.794, dated 8 October 2008 and Federal Decree No. 6899, dated 15 July 2009), and in Europe by a blow to the head, followed by severance of the spinal cord. Approximately 27 mm³ of tissue was immediately dissected from the posterior portion of the kidney. One-half of the kidney material was fixed in 99% ethanol for the molecular analysis and the other half in 2.5% glutaraldehyde in 0.2 M sodium cacodylate buffer for the ultrastructural studies described below.

DNA extraction, PCR amplification, sequencing and species identification

The DNA was extracted using a DNeasy® Blood & Tissue kit (Qiagen, USA), following the manufacturer's instructions. Malacosporean specific mala-f and mala-r primers (Grabner and El-Matbouli, 2010) were used in PCRs for all samples, amplifying approximately 680 bp of the SSU rDNA. Malacosporean-specific budd-f and budd-r primers (Grabner and El-Matbouli, 2010) were then subsequently used to amplify almost complete length SSU rDNA giving a product that is approximately 1784 bp. General myxozoan primers such as MedlinA and MedlinB (Medlin *et al.*, 1988) were trialled in pilot work but did not amplify any malacosporeans.

PCRs were carried out in 25 µL reaction volumes using 100 ng of extracted DNA, 5× Go Taq Flexi buffer (Promega, Madison, WI, USA), 10 mM dNTP mix, 25 mM MgCl₂, 10 mM for each

primer and 1× GoTaq G2 Flexi DNA polymerase (Promega, Madison, WI, USA). The original cycling conditions were used for mala-f and mala-r primers as described by Grabner and El-Matbouli (2010). For runs using budd-f and budd-r primers an initial denaturation stage at 95 °C for 5 min was followed by 40 cycles of denaturation at 95 °C for 45 s, annealing at 61 °C for 45 s, extension at 72 °C for 105 s, finishing with an extended elongation stage at 72 °C for 8 min. The cycling conditions were modified from Grabner and El-Matbouli (2010) for budd-f and budd-r primers to increase primer specificity.

Ultrastructural investigation suggested the presence of sphaerosporid myxozoans in kidney of white fish and dace. To identify cases presenting simultaneous infections of both sphaerosporids and malacosporeans all kidney material was screened by nested PCR using the primers and conditions outlined in Patra *et al.* (2018) (Erib 1 and 10 primers for primary PCR [95 °C for 5 min, 35 cycles of 94 °C for 1 min, 60 °C for 1 min, extension 90 s] followed by final extension of 5 min and SphFWSSU1243F and SphFWSSU3418R for nested PCR primers [95 °C for 5 min, 35 cycles of 94 °C for 1 min, 56 °C for 1 min, extension 90 s] followed by final extension of 5 min).

PCR products were electrophoresed in 2.0% agarose gel, stained with gel red and analysed by a Syngene Transilluminator. PCR products were purified using a Gel/PCR DNA Fragment Extraction Kit (Geneaid Biotech Ltd., USA) and sequenced. This work was conducted in the Molecular Biology Unit of the Natural History Museum, London (NHM) using the Applied Biosystems 3730xl DNA Analyser for Sanger sequencing. OTUs were compared with SSU rDNA sequence data in the GenBank and species identity was based on ≥99% similarity (Whipps and Kent, 2006; Bartošová and Fiala, 2011; Bartošová-Sojková *et al.*, 2014). An alignment of the original SSU rDNA sequences obtained in this study and related species from the GenBank (see Table 1 for sequence length), was used to produce a pairwise dissimilarity matrix using MEGA 6.0 (Tamura *et al.*, 2011).

Electron microscopy

Pieces of kidney were fixed in 2.5% glutaraldehyde in 0.2 M sodium cacodylate buffer, pH 7.4 and post-fixed in 1% OsO₄ in cacodylate buffer. Matching kidney material revealed to be positive for malacosporean infection (as identified by PCR and sequencing) was then dehydrated in a graded series of ethanol and embedded in Agar 100 resin (Agar Scientific, Stansted, UK) via propylene oxide. Semi-thin sections were stained with toluidine blue and ultrathin sections with uranyl acetate and lead citrate. Material was examined using a Hitachi H-7650 transmission electron microscope available at the NHMs sister institute, Jodrell Laboratory at Kew Gardens and a LEO 906 electron microscope available at the University of Campinas (UNICAMP), São Paulo, Brazil. We attempted to locate malacosporean infections in at least five kidneys that were identified as positive by PCR of each fish species. The number of kidneys analysed by ultrastructure was ultimately constrained by availability, suitability of material and time (see Table 3).

Results

Malacosporean infections were detected in the kidney of fishes originating from the UK and Switzerland. Five species were identified: *T. bryosalmonae*; *Tetracapsuloides* sp. 4 (Bartošová-Sojková *et al.*, 2014) (also referred to as *Tetracapsuloides* sp. 3 [Patra *et al.*, 2016] and from here on called *Tetracapsuloides* sp. 4); *Tetracapsuloides* sp. 5 (Bartošová-Sojková *et al.*, 2014) (also referred to as *Tetracapsuloides* sp. 2 [Patra *et al.*, 2016] and from here on called *Tetracapsuloides* sp. 5); *Buddenbrockia*

Table 1. Fish sampled from the UK and Switzerland that were infected with malacosporeans

Country	Water body (latitude; longitude)	Fish species (and Family)	Malacosporean species	Prevalence	SSU rDNA sequence length	SSU rDNA sequence match	Bryozoan* and fishes associated with infection (and author)
UK	River Stour, Kent (51° 13'49"N; 0°58'10"E)	Brown Trout, <i>Salmo trutta</i> (Salmonidae)	<i>Tetracapsuloides bryosalmonae</i>	77.7% (7/9)	1673 bp	KF731712	<i>Oncorhynchus mykiss</i> , <i>S. trutta</i> (Bartošová-Sojková et al., 2014)
		Dace, <i>Leuciscus leuciscus</i> (Cyprinidae)	<i>Buddenbrockia plumatellae</i>	33.3% (4/12)	1691 bp	KF731682	<i>Abramis brama</i> , <i>Alburnus alburnus</i> , <i>Aspius aspius</i> , <i>Blicca bjoerkna</i> , <i>Chondrostoma nasus</i> , <i>Leuciscus idus</i> , <i>L. leuciscus</i> , <i>Perca fluviatilis</i> , <i>Rutilus rutilus</i> , <i>Scardinius erythrophthalmus</i> , <i>Squalius cephalus</i> (Bartošová-Sojková et al., 2014)
	Roach, <i>R. rutilus</i> (Cyprinidae)	<i>Tetracapsuloides</i> sp. 4	6.3% (1/16)	1579 bp	KF731727	<i>A. alburnus</i> , <i>R. rutilus</i> (Bartošová-Sojková et al., 2014)	
	Stone Loach, <i>Barbatula barbatula</i> (Nemacheilidae)	<i>Buddenbrockia</i> sp. 2	100% (20/20)	1693 bp	KJ150268	<i>Fredericella sultana</i> * (Hartikainen et al., 2014)	
	Gudgeon, <i>Gobio gobio</i> (Cyprinidae)	<i>Tetracapsuloides</i> sp. 5	42.9% (9/21)	1580 bp	KF731729	<i>G. gobio</i> (Bartošová-Sojková et al., 2014)	
Switzerland	Blickling Lake, Norfolk (52°48'45.60"N; 1° 13'52.90"E)	Roach, <i>R. rutilus</i> (Cyprinidae)	<i>B. plumatellae</i>	53.8% (7/13)	1704 bp	KF731682	<i>A. brama</i> , <i>A. alburnus</i> , <i>A. aspius</i> , <i>B. bjoerkna</i> , <i>C. nasus</i> , <i>L. idus</i> , <i>L. leuciscus</i> , <i>P. fluviatilis</i> , <i>R. rutilus</i> , <i>S. erythrophthalmus</i> , <i>S. cephalus</i> (Bartošová-Sojková et al., 2014)
		White Fish, <i>Coregonus albus</i> (Salmonidae)	<i>T. bryosalmonae</i>	85.7% (6/7)	1683 bp	KF731712	<i>O. mykiss</i> , <i>S. trutta</i> (Bartošová-Sojková et al., 2014)
	Roach, <i>R. rutilus</i> (Cyprinidae)	<i>B. plumatellae</i>	5.5% (1/18)	1692 bp	KF731682	<i>A. brama</i> , <i>A. alburnus</i> , <i>A. aspius</i> , <i>B. bjoerkna</i> , <i>C. nasus</i> , <i>L. idus</i> , <i>L. leuciscus</i> , <i>P. fluviatilis</i> , <i>R. rutilus</i> , <i>S. erythrophthalmus</i> , <i>S. cephalus</i> (Bartošová-Sojková et al., 2014)	
	River Brubach (47° 27'48"N; 9°07'15"E)	Brown Trout**, <i>S. trutta</i> (Salmonidae)	<i>T. bryosalmonae</i>	88.9% (16/18)	1683 bp	KF731712	<i>O. mykiss</i> , <i>S. trutta</i> (Bartošová-Sojková et al., 2014)
River Furtbach (47° 27'05"N; 8°23'28"E)	Rainbow Trout***, <i>O. mykiss</i> (Salmonidae)	<i>T. bryosalmonae</i>	100% (12/12)	1683 bp	KF731712	<i>O. mykiss</i> , <i>S. trutta</i> (Bartošová-Sojková et al., 2014)	

Details on collection sites, fish hosts, malacosporean species; prevalence of infection, SSU rDNA sequence lengths; sequences that provided the closest match in the GenBank, and bryozoans (*) and fishes previously identified to be infected by the respective parasites. Archived samples of brown and rainbow trout known to be infected by *T. bryosalmonae* (**) or infected by *T. bryosalmonae* (***) or infected by *T. bryosalmonae* through transmission studies (***). bp, base pairs.

Table 2. Fish sampled from the UK, Switzerland, the USA and Brazil in which infections were not detected

Country	Site	Fish species (and Family)	No. sampled
UK	River Stour	Pike, <i>Esox lucius</i> (Esocidae)	12
		Perch, <i>P. fluviatilis</i> (Percidae)	14
		Minnow, <i>Phoxinus phoxinus</i> (Cyprinidae)	12
		Chub, <i>S. cephalus</i> (Cyprinidae)	1
	Felbrigg Lake	Pike, <i>E. lucius</i> (Esocidae)	4
Switzerland	Lake Lucerne	Perch, <i>P. fluviatilis</i> (Percidae)	6
		Arctic charr, <i>Salvelinus alpinus</i> (Salmonidae)	6
USA	Oklahoma	Paddle fish, <i>Polyodon spathula</i> (Polyodontidae)	10
Brazil	Fish farm, Campos do Jordão	Rainbow trout, <i>O. mykiss</i> (Salmonidae)	10
	Fish Farm, Santa Cruz da Conceição	Tambaqui, <i>Colossoma macropomum</i> (Serrasalmidae)	10
		Pacu, <i>Piaractus mesopotamicus</i> (Serrasalmidae)	10
	Lake Santa Fé, Pirassununga	Carp, <i>Cyprinus carpio</i> (Cyprinidae)	10
	Amazon River, Santarém	Tambaqui, <i>C. macropomum</i> (Serrasalmidae)	3
		Tucunaré, <i>Cichla monoculus</i> (Cichlidae)	1
	Caparari, <i>Pseudoplatystoma punctifer</i> (Pimelodidae)	1	

Data on collection sites, fish species and the number of fish sampled (No. sampled).

Table 3. The detection of malacosporean infections in fish kidney material from the UK and Switzerland (CF) according to PCR, sequencing and ultrastructural analysis

Fish species and water body	Malacosporean species	No. kidneys positive by PCR	No. kidneys examined by ultrastructure	No. kidneys with spores
Brown Trout, <i>S. trutta</i> River Stour, Kent (UK)	<i>T. bryosalmonae</i>	7	5	1
Dace, <i>L. leuciscus</i> ^a River Stour, Kent (UK)	<i>B. plumatellae</i>	4	4	0
Roach, <i>R. rutilus</i> River Stour, Kent (UK)	<i>Tetracapsuloides</i> sp. 4	1	1	1
Stone Loach, <i>B. barbatula</i> River Stour, Kent (UK)	<i>Buddenbrockia</i> sp. 2	20	5	1
Gudgeon, <i>G. gobio</i> River Stour, Kent (UK)	<i>Tetracapsuloides</i> sp. 5	9	5	0
Roach, <i>R. rutilus</i> ^a Blickling Lake, Norfolk (UK)	<i>B. plumatellae</i>	7	2	0
White Fish, <i>C. albula</i> Lake Lucerne (CF)	<i>T. bryosalmonae</i>	6	5	1
Roach, <i>R. rutilus</i> Lake Lucerne (CF)	<i>B. plumatellae</i>	1	1	0
Brown Trout, <i>S. trutta</i> ^a River Brubach (CF)	<i>T. bryosalmonae</i>	16	3	0
Rainbow Trout, <i>O. mykiss</i> ^a River Furtbach (CF)	<i>T. bryosalmonae</i>	12	2	0
Total	–	83	33	4

Included are fish species and locality data, the malacosporean species inferred by sequencing, the number (No.) of fish kidneys detected by PCR, the number of kidneys examined by ultrastructure and the number of kidneys in which spores were detected by ultrastructure.

^aDegraded material.

plumatellae and *Buddenbrockia* sp. 2 (Hartikainen *et al.*, 2014) (also referred to as *Buddenbrockia* sp. 4 [Patra *et al.*, 2016] and from here on called *Buddenbrockia* sp. 2). The infection prevalences of these species ranged from 5.5 to 100% (Table 1).

Tetracapsuloides bryosalmonae was identified to infect 85.7% of white fish from Lake Lucerne ($n = 7$), 77.7% of the brown

trout specimens examined from the River Stour ($n = 9$), 89.0% of brown trout from the River Brubach ($n = 18$) and 100% of rainbow trout from the River Furtbach ($n = 12$) (Table 1). Young amorphous sporogonic stages (Fig. 1A) and mature spores (Fig. 1B–D) of *T. bryosalmonae* were found in kidney tubules of brown trout from the River Stour. Young amorphous sporogonic

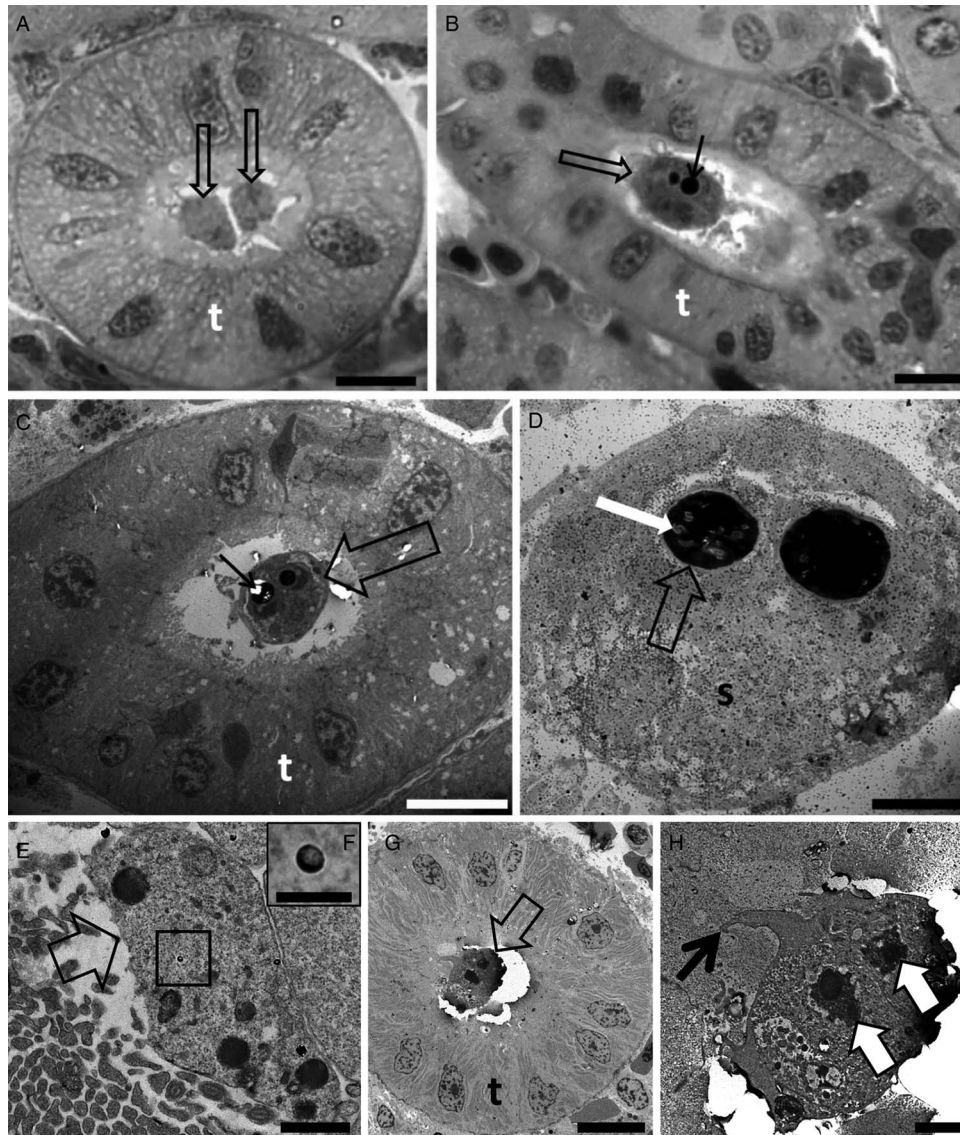


Fig. 1. Photomicrography of kidney tubules (t) of brown trout collected in the River Stour, Kent, UK, in semi-thin sections stained by toluidine blue (A, B). Transmission electron microscopy (C–H) showing the development of *Tetracapsuloides bryosalmonae* spores in the lumen of the kidney tubules (t) of brown trout (C and D) collected in the River Stour, Kent, UK, and myxozoan development (either malacosporan or sphaerosporid) in white fish (E–H), collected in the Lake Lucerne, Switzerland. (A) Note the presence of two early developmental stages (arrows) developing attached to the kidney tubule wall. Scale bar = 10 μ m. (B and C) Advanced stage of spore development (empty arrows) showing polar capsule (thin black arrows). Scale bar = 10 μ m. (D) Mature spore (s) showing polar capsule (empty arrow) with polar filaments (white arrow). Scale bar = 2 μ m. (E) Primary cell (empty arrow) developing in the lumen of the kidney tubule. Note the presence of sporoplasmosomes (box). Scale bar = 1 μ m. (F) High magnification of E showing the sporoplasmosomes with a lucent area. Scale bar = 200 nm. (G) Pseudoplasmodium (empty arrow) developing attached to the kidney tubule wall. Scale bar = 10 μ m. (H) High magnification of G showing pseudoplasmodium connected to the kidney tubule wall *via* pseudopodia (thin black arrow). Note the two secondary cell nuclei (white arrows). Scale bar = 2 μ m.

stages containing sporoplasmosomes with a lucent area (Fig. 1E, F) and a pseudoplasmodium connected to the kidney tubule wall *via* pseudopodia (Fig. 1G, H) were observed in white fish from Lake Lucerne. However, because PCR indicated co-infection of this material (see below), it is possible these are immature sporogonic stages of a sphaerosporid. Unfortunately, although five white fish kidneys were examined by ultrastructure, the only kidney that revealed developmental stages was this co-infected material (Table 3).

Buddenbrockia plumatellae infected 33.3% ($n = 16$) of the dace specimens from the River Stour, 53.8% of the roach from Blickling Lake ($n = 13$), and 5.5% of the roach from Lake Lucerne ($n = 18$) (Table 1). Unfortunately, ultrastructure was uninformative, being compromised by degeneration of dace material.

Tetracapsuloides sp. 4 was detected in the kidney of roach sampled from the River Stour at a prevalence of 6.3% ($n = 16$)

(Table 1). Advanced developmental stages anchored to the kidney tubule wall *via* pseudopodia showed polar capsules and sporoplasmosomes with the characteristic lucent area (Fig. 2A–D).

Tetracapsuloides sp. 5 was detected in the kidney of gudgeon from the River Stour at a prevalence of 42.9% ($n = 21$) (Table 1). Clear developmental stages of spores were not observed in kidney tubules.

Buddenbrockia sp. 2 was detected in 100% ($n = 20$) of the stone loach specimens sampled from the River Stour (Table 1). Ultrastructural analysis revealed sporogonic stages and mature spores in kidney tubules (Fig. 3A–E).

There was low divergence between the SSU rDNA sequences of the malacosporan species found in this study and the most similar sequences available in the GenBank (ranging from 0.1 to 0.3%) (Table 4).

Sphaerosporid co-infections were identified in four individuals, two dace from Kent and two white fish from Zurich.

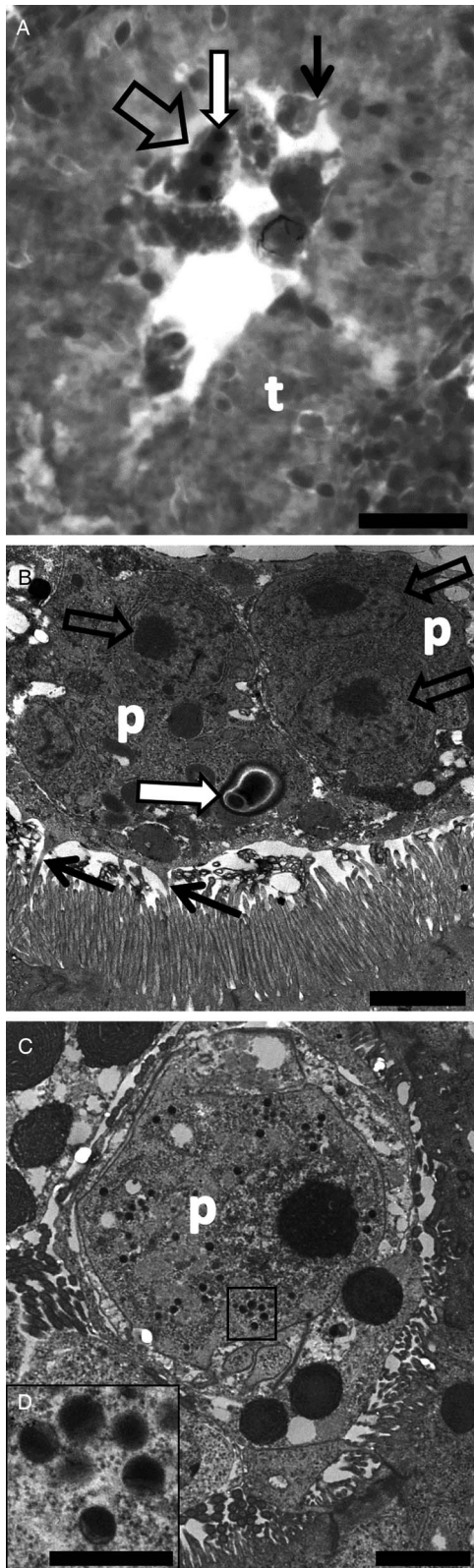


Fig. 2. Photomicrography of kidney tubules (t) of roach collected in the River Stour, Kent, UK, in semi-thin sections stained by toluidine blue (A), and by transmission electron microscopy (B–D) showing spore development of *Tetracapsuloides* sp. 4. (A) Advanced stage of spore development (empty arrow) with polar capsules (white arrow). Note a stage connected to the kidney tubule wall (thin black arrow). Scale bar = 20 μ m. (B) Two pseudoplasmodia (p) showing secondary cell nuclei (empty arrows) and a polar capsule (white arrow). Note pseudopodia anchoring the parasite to the kidney tubule wall via pseudopodia (thin black arrows). Scale bar = 2 μ m. (C) Primary cell (p) with scattered sporoplasmosomes (box). Scale bar = 2 μ m. (D) High magnification of box in panel (C) showing details of sporoplasmosomes, each with a lucent area. Scale bar = 500 nm.

Both host species have previously been reported with sphaerosporid infections in Europe (El-Matbouli and Hoffman, 1996; Patra *et al.*, 2018). Rounded sporogonic stages (Fig. 4A and D) with an electron-dense material surrounding each early developmental spore stage (black arrows in Fig. 4A, B, E, F) were observed in white fish and dace. The same electron-dense material was observed forming the hard valves of a mature spore in white fish (Fig. 4C).

Malacosporean infections were detected by ultrastructure for material that was positive by PCR in 4 of 33 cases that were examined (see Table 3).

Discussion

Malacosporeans exploit a diversity of fish hosts

Our results demonstrate that a range of fish hosts belonging to different families are used by the two currently recognized malacosporean genera, *Tetracapsuloides* and *Buddenbrockia*. Infection of trout by *T. bryosalmonae* has been known for decades (Kent and Hedrick, 1985), with many studies demonstrating development in kidney tubules of brown and rainbow trout in the UK and the USA (Kent and Hedrick, 1986; Clifton-Hadley and Feist, 1989; Hedrick *et al.*, 1993; Morris *et al.*, 2000). *Tetracapsuloides bryosalmonae* has been suggested to infect all salmonid species (Hedrick *et al.*, 1993) but whether all species serve as effective hosts is unclear. The consistent lack of sporogony in exotic rainbow trout in Europe (Grabner and El-Matbouli, 2008; Hartikainen and Okamura, 2015) demonstrates that, although some salmonids are susceptible to infection, they are accidental hosts. Our results suggest that white fish in Switzerland may also serve as hosts of *T. bryosalmonae* but we were unable to definitively confirm spore production in white fish that were not also infected with sphaerosporids. The prevalences of *T. bryosalmonae* infections were similar in white fish, brown trout and rainbow trout, although it should be stressed that this observation is based on relatively low sample sizes.

Our further studies of *Tetracapsuloides* spp. were also informative. The presence of sporogonic stages including advanced developmental stages of spores of *Tetracapsuloides* sp. 4 in kidney tubules in roach from the River Stour, imply that roach is a true host. The prevalence of infection (6.3%) was lower than that reported in a study based on molecular analyses of roach kidney material from the Czech Republic (100%; Bartošová-Sojtková *et al.*, 2014). However, the high prevalence reported by Bartošová-Sojtková *et al.* (2014) is very likely biased by low sample size ($n = 2$). *Tetracapsuloides* sp. 5 was detected in the kidney of gudgeon from the River Stour where the prevalence of infection was 43.0%. Previous molecular investigation detected this species in gudgeon in the Czech Republic, with prevalences of 33.0 and 91.0% (Bartošová-Sojtková *et al.*, 2014). We did not observe sporogonic stages in kidney tubules and thus cannot confirm the host status of gudgeon. Nevertheless, recurrent detection of this species in gudgeon (Bartošová-Sojtková *et al.*, 2014; Patra *et al.*, 2016) often at substantial prevalences suggests that infection by *Tetracapsuloides* sp. 5 is common. Further work is required to clarify the host status of gudgeon.

Bartošová-Sojtková *et al.* (2014) found *B. plumatellae* infections in dace, roach and bleak (*Alburnus alburnus*) in the Czech Republic at 100, 60.0 and 46.0% infection prevalences, respectively. We detected this species in dace from the River Stour (infection prevalence = 33.3%) and in roach from Blickling Lake (infection prevalence = 53.8%) and Lake Lucerne (infection prevalence = 5.5%). Grabner and El-Matbouli (2010) showed, in a cohabitation study, that *B. plumatellae* was transmitted from bryozoans to carp and minnow. The collective evidence thus

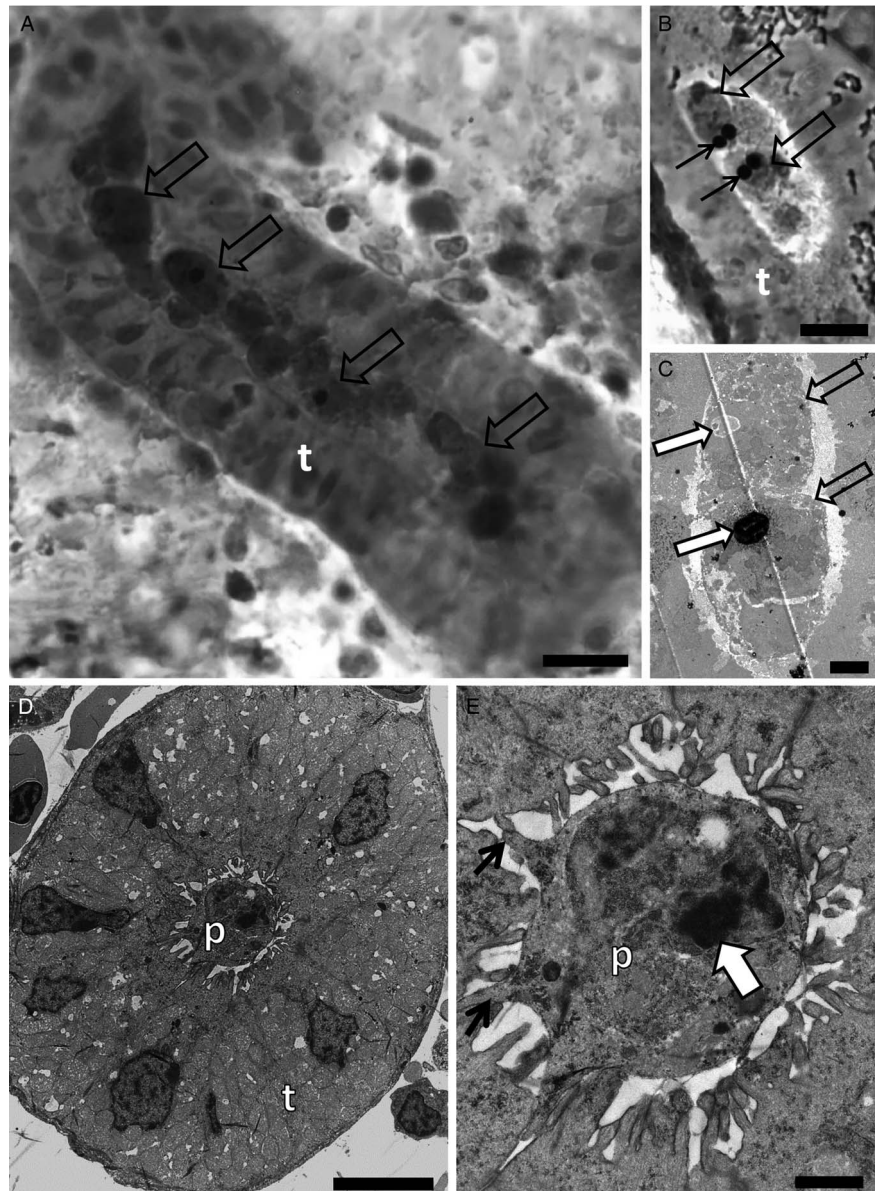


Fig. 3. Photomicrography of kidney tubules (t) of stone loach collected in the River collected in the River Stour, Kent, UK, in semi-thin sections stained by toluidine blue (A and B), and by transmission electron microscopy (C–E) showing spore development of *Buddenbrockia* sp. 2. (A) Note the different stages of development of spores (arrows) as well as earlier developmental stages. Scale bar = 10 μ m. (B) Two spores in advanced developmental stages (empty arrows) with polar capsules (black arrows). Scale bar = 10 μ m. (C) Note two young developmental stages of spores (empty arrows), with a polar capsule in development (large white arrows). Scale bar = 2 μ m. (D) Pseudoplasmodium (p) in the lumen of the kidney tubule. Scale bar = 5 μ m. (E) High magnification of D showing pseudoplasmodium connected to the kidney tubule wall via pseudopodia (thin black arrow). Note the secondary cell nucleus (white arrow). Scale bar = 1 μ m.

suggests that of *B. plumatellae* is able to exploit a range of cyprinid hosts but it remains to be confirmed whether roach and dace support sporogony.

Our detection of *Buddenbrockia* sp. 2 in stone loach is the first time this malacosporan has been linked with a fish host. Hartikainen *et al.* (2014) reported infections of *Buddenbrockia* sp. 2 which develops as myxoworms in the bryozoan *Fredericella sultana* sampled in the UK, Switzerland and Germany. Our ultrastructural analyses revealed sporogonic stages and mature spores in kidney tubules, identifying stone loach as a true host. Thus, the life cycle of *Buddenbrockia* sp. 2 appears to be resolved, with the parasite exploiting *F. sultana* as an invertebrate host and *Barbatula barbatula* as a vertebrate host. It is of course conceivable that further fish and bryozoan hosts may be used.

It should be noted that no signals of kidney infection were observed when fish were dissected to collect material for study, an observation in keeping with the general view that many myxozoan infections are innocuous and/or have little impact on fish hosts (Shul'man, 1990; Lom and Dyková, 1992). It is also consistent with the weak or absent immune response, typically observed in natural fish hosts of malacosporans (Grabner and El-Matbouli, 2008). Such inapparent infections almost certainly contribute to the general lack of investigation of malacosporan

infections in fish. Notably, inapparent also characterized the infections of brown trout and white fish by *T. bryosalmonae*, suggesting that environmental conditions and/or fish health status were not conducive for PKD development. However, the high infection prevalences (78.0% in the River Stour and 87.0% in Lake Lucerne) suggest that many fish may have the potential to develop disease.

We should also note that in only about 12% of cases (4/33) where we obtained positive PCR results were able to detect malacosporan stages by ultrastructure in the paired kidney material (Table 3). In some cases this was due to degraded material (e.g. dace). In other cases, this could reflect little proliferation and development in kidney, which then made detection by ultrastructure very difficult and eventually we ceased searching.

The challenge of identifying fish hosts

The confirmation of malacosporan fish host status is variously challenging. For example, the lack of detection of malacosporans in material from Brazil may reflect seasonality, low sample sizes, lack of examination of appropriate fish age classes or absence of bryozoan hosts where the fish were sampled. We anticipate that malacosporans are present in Brazil in view of observations by

Table 4. Dissimilarity matrix for SSU rDNA of malacosporan species found in this study and their closest matches in the GenBank

Species	1	2	3	4	5	6	7	8	9	10	11	12	13	14	15
(1) T. bryosalmonae KF731712.1 (BS)	-	5/1673	4/1683	4/1683	2/1683	39/1726	39/1579	22/1724	23/1580	247/1726	235/1691	235/1692	244/1695	217/1601	223/1693
(2) T. bryosalmonae (this study - host: brown trout - UK)	0.3	-	1/1673	1/1673	2/1673	42/1673	39/1579	25/1673	23/1580	238/1673	236/1668	237/1668	235/1649	219/1601	222/1673
(3) T. bryosalmonae (this study - host: brown trout - CF)	0.2	0.1	-	0/1683	2/1683	41/1683	40/1579	24/1683	24/1580	241/1683	238/1683	239/1683	237/1679	218/1601	212/1683
(4) T. bryosalmonae (this study - host: rainbow trout - CF)	0.2	0.1	0.0	-	2/1683	41/1683	40/1579	24/1683	24/1580	240/1683	237/1683	238/1683	236/1679	218/1601	222/1683
(5) T. bryosalmonae (this study - host: white fish - CF)	0.1	0.1	0.1	0.1	-	41/1683	40/1579	24/1683	24/1580	240/1683	237/1672	238/1672	236/1657	218/1601	222/1671
(6) Tetracapsuloides sp. 4 KF731727 (BS)	2.3	2.5	2.4	2.4	2.4	-	1/1579	41/1724	41/1580	243/1725	231/1691	231/1692	240/1695	216/1601	222/1693
(7) Tetracapsuloides sp. 4 (this study - host: roach - UK)	2.5	2.5	2.5	2.5	2.5	0.1	-	41/1579	40/1577	225/1579	226/1579	226/1579	226/1579	217/1577	218/1579
(8) Tetracapsuloides sp. 5 KF731729 (BS)	1.3	1.5	1.4	1.4	1.4	2.4	2.6	-	1/1580	239/1724	227/1691	2227/1692	236/1695	218/1601	224/1693
(9) Tetracapsuloides sp. 5 (this study - host: gudgeon - UK)	1.5	1.5	1.5	1.5	1.5	2.6	2.5	0.1	-	222/1580	223/1580	223/1580	223/1580	219/1580	220/1580
(10) B. plumatellae KF731682 (BS)	14.5	14.5	14.6	14.5	14.5	14.3	14.5	14.1	14.3	-	1/1691	1/1692	2/1695	67/1601	70/1693
(11) B. plumatellae (this study - host: dace - UK)	14.3	14.4	14.5	14.4	14.4	14.1	14.6	13.8	14.4	0.1	-	1/1691	1/1666	68/1601	69/1691
(12) B. plumatellae (this study - host: roach - CF)	14.3	14.4	14.5	14.5	14.5	14.1	14.6	13.8	14.4	0.1	0.1	-	2/1666	68/1601	70/1692
(13) B. plumatellae (this study - host: roach - UK)	14.2	14.5	14.5	14.5	14.5	14.6	14.6	14.3	14.4	0.1	0.1	0.1	-	69/1601	70/1693
(14) Buddenbrockia sp. 2 KJ150268 (H)	14.0	14.1	14.0	14.0	14.0	13.9	14.0	14.0	14.1	4.2	4.3	4.3	4.3	-	5/1601
(15) Buddenbrockia sp. 2 (this study - host: loach - UK)	13.5	13.5	13.5	13.5	13.5	13.5	14.0	13.6	14.1	4.2	4.1	4.2	4.2	4.2	0.3

The upper triangle shows nucleotide differences in relation to the number of bases compared. The lower triangle shows % pairwise distances. SSU rDNA = 18 small subunit ribosomal DNA, UK: United Kingdom, CF: Switzerland, BS = Bartošová-Sojková et al. (2014); H = Hartikainen et al. (2014).

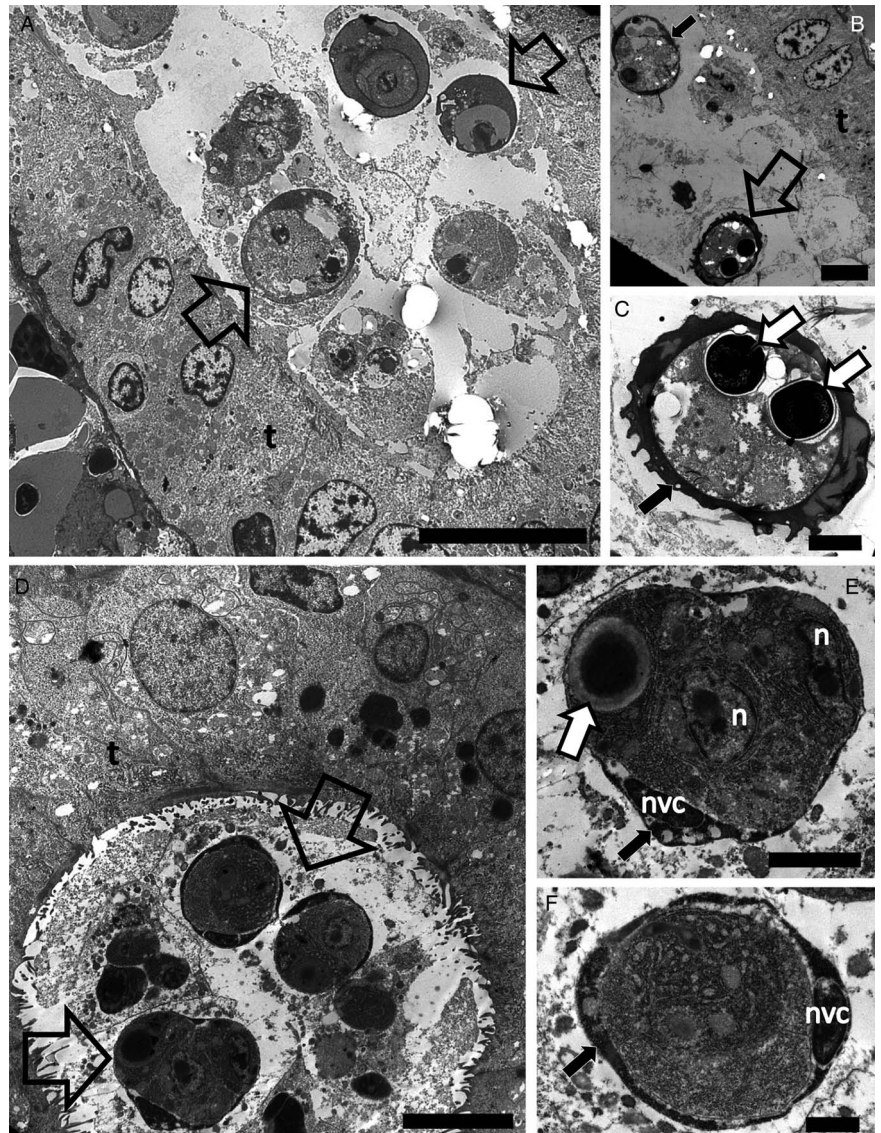


Fig. 4. Transmission electron microscopy showing the development of *Sphaerospora* spp. spores in the lumen of kidney tubules of white fish (A–C) collected in the Lake Lucerne, Switzerland and dace (D–F) collected in the River Stour, Kent, UK. (A) Sporogonic stages (empty arrows) developing in the lumen of the kidney tubule of white fish. Scale bar = 10 μ m. (B) Early sporogonic stage with electron dense material in valvogenic cells (black arrow) and a mature spore (empty arrow) in the lumen of the kidney tubule. Scale bar = 5 μ m. (C) High magnification of C showing the mature spore with electron dense material forming the hard valves (black arrow) and two polar capsules (white arrows). Scale bar = 2 μ m. (D) Sporogonic stages (empty arrows) developing in the lumen of the kidney tubule of dace. Scale bar = 5 μ m. (E) High magnification of (D) showing a sporogonic stage with electron dense material in the valvogenic cells (black arrow), the nucleus of the valvogenic cell (nvc), other nuclei (n) and a polar capsule (white arrow). Scale bar = 2 μ m. (F) A sporogonic stage showing electron dense material in the valvogenic cells (black arrow) and the nucleus of the valvogenic cell (nvc). Scale bar = 1 μ m.

Marcus (1941) of *Buddenbrockia* infections in bryozoans in São Paulo State. In addition, ultrastructural detection of sporogonic stages of malacosporans in the vertebrate host is complicated. It requires extensive sectioning of embedded material to search for small developmental stages, and spores that may be patchily distributed in kidney tubules. The failure to detect sporogonic stages in some cases may simply arise from a limited number of parasites or because the infection has not yet matured. This is compounded by the inappreciability of many infections at the macroscopic level.

As shown here, a targeted approach employing associated SSU rDNA sequencing to confirm infection status will at least identify what material to investigate. The alternative approach of conducting transmission trials to confirm that infection is transmitted from fish to bryozoans requires fish husbandry, and permits are often required for such work. We suggest a potential alternative molecular approach for future identification of fish hosts by determining whether genes specifically involved in polar capsule development (e.g. minicollagens and nematogalactins: Holland *et al.*, 2011; Shpirer *et al.*, 2014, NSPs 1–7: Shpirer *et al.*, 2018) are expressed in infected kidney. The rationale is that polar capsules are only present in malacosporan spores and thus the detection of such expressed genes would indicate spore development. In practical terms this would involve preservation of kidney material

in e.g. RNAlater and confirmation that these genes are not expressed in pre-sporogonic developmental stages.

Ultrastructural distinction of malacosporan and myxosporan sporogonic stages in fish kidney tubules

We found co-infections of *T. bryosalmonae* and a sphaerosporid species in white fish and of *B. plumatellae* and a sphaerosporid species in dace. The most apparent morphological difference between myxosporan and malacosporan spores is the composition of their valves, which are hardened in myxosporans but remain soft in malacosporans (Anderson *et al.*, 1999; Canning and Okamura, 2004). The hardening of myxosporan spore valves is achieved by secretion of chitin (Mñnoz *et al.*, 1999, 2000; Liu *et al.*, 2011), which may also be associated with internal organelles (Lukeš *et al.*, 1993; Muñoz *et al.*, 2000; Redondo *et al.*, 2008). This glycoprotein likely protects myxosporan spores from environmental degradation and maintains spore shape (Mñnoz *et al.*, 1999; Kaltner *et al.*, 2007; Estensoro *et al.*, 2013). Unprotected malacosporan spores degrade relatively quickly upon release from fish (in <24 h) (de Kinkelin *et al.*, 2002) compared to the chitin-protected spores of myxosporans. Accordingly, electron microscopy of mature myxosporan spores reveals electron dense valves, and in immature spores an accumulation of electron


dense material (inferred to be valve forming material) is observed in the cytoplasm of valvogenic cells (Adriano *et al.*, 2009; Moreira *et al.*, 2014; Morsy *et al.*, 2016). Fibrillar electron dense material reported in valvogenic cells of *Sphaerospora jiroveci* forms a continuous layer enclosing the developing spore (Dyková and Lom, 1997). Further studies are required to confirm whether this electron dense material is chitin and whether its presence is characteristic of sphaerosporids (Fig. 4B–F).

At least at present, there appear to be no other reliable morphological features that could be used to distinguish between malacosporan and myxosporean developmental stages. For example, although the lucent area of sporoplasmosomes has been highlighted as a malacosporan feature and is evident in the sporoplasmosomes in roach (Fig. 2C and D) and white fish (Fig. 1E and F), such lucent areas are also occasionally observed in sporoplasmosomes of myxosporeans (Lom *et al.*, 1989; Alvarez-Pellitero *et al.*, 2002; Morris and Freeman, 2009; Naldoni, pers. obs.). In addition, the noted tendency for a peripheral distribution of sporoplasmosomes in primary cells of malacosporans (Canning *et al.*, 2000; Canning *et al.*, 2009) is also sometimes occasionally observed in the primary cytoplasm of myxosporeans (Supamattaya *et al.*, 1993). We would note that in our experience malacosporan sporogonic stages in kidney are difficult to find relative to myxosporean stages. Thus, frequent detection of developmental stages in histological sections could suggest the presence of myxosporeans.

Final comments

Our work has revealed five malacosporans infecting a variety of fish hosts in the UK and Switzerland, contributing to the growing evidence of a hidden diversity of vertebrate hosts that are exploited by this myxozoan lineage. Further study is necessary to formally describe some of these malacosporan species, to determine if gudgeon act as true hosts of *Tetracapsuloides* sp. 5, to confirm that white fish are true hosts of *T. bryosalmonae*, and to ascertain whether *B. plumatellae* is able to utilize both dace and roach as hosts. It is also clear that the two malacosporan genera are not restricted to exploiting single fish families with *Tetracapsuloides* spp. exploiting members of Salmonidae and Cyprinidae and *Buddenbrockia* spp. exploiting members of Cyprinidae and Nemacheilidae (Table 1).

Screening both bryozoans and fish has provided vital information about malacosporan diversities and distributions (Bartošová-Sojtková *et al.*, 2014; Hartikainen *et al.*, 2014; Patra *et al.*, 2016) and may lead to the resolution of life cycles (this study). Further studies should aim to determine whether malacosporans generally show broad fish host use or whether some may be specialists. In addition, resolution of accidental hosts and the consequences of dead-end infections could lead to future studies on host–parasite interactions, effective immune responses and the potential dilution of infectious stages when non-permissive hosts are abundant. Finally, resolving malacosporan hosts may help us to understand the range of early hosts that were exploited as cnidarians evolved endoparasitism in view of the primitive nature of malacosporans (Okamura *et al.*, 2015b).

Author ORCIDs.  Juliana Naldoni, 0000-0002-6764-448X

Acknowledgements. The authors thank Hanna Hartikainen (EAWAG, Zurich) and Heike Schmidt-Posthaus (University of Bern) for help with access to or provision of fish kidney material from the River Furtbach, Lake Lucerne and the River Brubach, and Joe Huddart and Guy Woodward (Imperial College, London) for enabling sampling kidney of fish from the River Stour, UK. We also thank Pavla Bartošová-Sojtková for drawing our attention to the presence of a sphaerosporid infection in kidney material and advising on sphaerosporid development.

Financial support. This study was financed in part by the Coordenação de Aperfeiçoamento de Pessoal de Nível Superior – Brasil (CAPES) – Finance Code 001 and by the grant #2013/21374-6, São Paulo Research Foundation (FAPESP) to E. A. Adriano. E. A. Adriano received a research productivity grant from the Brazilian Fostering Agency CNPq (grant #301886/2016-4). J. Naldoni was supported by the scholarship #2016/08831-7, São Paulo Research Foundation (FAPESP).

Conflict of interest. None.

Ethical standards. Not applicable.

References

- Adriano EA, Arana S, Carriero MM, Naldoni J, Ceccarelli PS and Maia AAM (2009) Light, electron microscopy and histopathology of *Myxobolus salminus* n. sp., a parasite of *Salminus brasiliensis* from the Brazilian Pantanal. *Veterinary Parasitology* **165**, 25–29.
- Alvarez-Pellitero P, Molnár K, Sitjà-Bobadilla A and Székely C (2002) Comparative ultrastructure of the actinosporan stages of *Myxobolus brahmae* and *M. psuedodispar* (myxozoa). *Parasitology Research* **88**, 198–207.
- Anderson CL, Canning EU and Okamura B (1999) Molecular data implicate bryozoans as hosts for PKX (Phylum: Myxozoa) and identify a clade of bryozoan parasites within the Myxozoa. *Parasitology* **119**, 555–561.
- Atkinson SD, Bartošová-Sojtková P, Whipps CM and Bartholomew JL (2015) Approaches for characterising myxozoan species. In Okamura B, Gruhl A and Bartholomew JL (eds), *Myxozoan Evolution, Ecology and Development*. Switzerland: Springer International Publishing, pp. 111–123.
- Bartošová P and Fiala I (2011) Molecular evidence for the existence of cryptic species assemblages of several myxosporeans (Myxozoa). *Parasitology Research* **108**, 573–583.
- Bartošová-Sojtková P, Hrabcová M, Pecková H, Patra S, Kodádková A, Jurajda P, Tyml T and Holzer AS (2014) Hidden diversity and evolutionary trends in malacosporan parasites (Cnidaria: Myxozoa) identified using molecular phylogenetics. *International Journal for Parasitology* **44**, 565–577.
- Bucke D, Feist SW and Clifton-Hadley RS (1991) The occurrence of proliferative kidney disease (PKD) in cultured and wild fish: further investigations. *Journal of Fish Diseases* **14**, 583–588.
- Canning EU and Okamura B (2004) Biodiversity and evolution of the Myxozoa. *Advances in Parasitology* **56**, 43–131.
- Canning EU, Curry A, Feist SW, Longshaw M and Okamura B (1999) *Tetracapsula bryosalmonae* n. sp. for PKX organism the cause of PKD in salmonid fish. *Bulletin of the European Association of Fish Pathologists* **19**, 203–206.
- Canning EU, Curry A, Feist SW, Longshaw M and Okamura B (2000) A new class and order of myxozoans to accommodate parasites of bryozoans with ultrastructural observations on *Tetracapsula bryosalmonae* (PKX organism). *Journal of Eukaryotic Microbiology* **47**, 456–468.
- Canning EU, Curry A and Okamura B (2009) Early development of the myxozoan *Buddenbrockia plumatellae* in the bryozoans *Hyalinella punctata* and *Plumatella fungosa*, with comments on taxonomy and systematics of the Myxozoa. *Folia Parasitologica* **55**, 241–255.
- Clifton-Hadley RS and Feist SW (1989) Proliferative kidney disease in brown trout *Salmo trutta*: further evidence of a myxosporean aetiology. *Diseases of Aquatic Organisms* **6**, 99–103.
- de Kinkelin P, Gay M and Forman S (2002) The persistence of infectivity of *Tetracapsula bryosalmonae*-infected water for rainbow trout, *Oncorhynchus mykiss* (Walbaum). *Journal of Fish Diseases* **25**, 477–482.
- Dyková I and Lom L (1997) Light and electron microscope observations on *Sphaerospora jiroveci* n. sp. (Myxozoa) from the kidney of *Pangasius sutchi* (Teleostei). *European Journal of Protistology* **33**, 444–451.
- El-Matbouli M and Hoffman RW (1996) Light and electron microscopic descriptions of *Sphaerospora coregoni* El-Matbouli, Hoffmann and Kern, 1995 (Myxozoa: Sphaerosporidae) from the kidney of Whitefish (*Coregonus lavaretus*). *European Journal for Protistology* **32**, 389–398.
- Estensoro I, Álvarez-Pellitero P and Sitjà-Bobadilla A (2013) Antigenic characterization of *Enteromyxum leei* (Myxozoa: Myxosporea). *Diseases of Aquatic Organisms* **106**, 149–162.
- Feist SW, Longshaw M, Canning EU and Okamura B (2001) Induction of proliferative kidney disease (PKD) in rainbow trout *Oncorhynchus mykiss* via the bryozoan *Fredericella sultana* infected with *Tetracapsula bryosalmonae*. *Diseases of Aquatic Organisms* **45**, 61–68.

- Grabner DS and El-Matbouli M (2008) Transmission of *Tetracapsuloides bryosalmonae* (Myxozoa: Malacosporea) to *Fredericella sultana* (Bryozoa: Phylactolaemata) by various fish species. *Diseases of Aquatic Organisms* 79, 133–139.
- Grabner DS and El-Matbouli M (2010) Experimental transmission of malacosporean parasites from bryozoans to common carp (*Cyprinus carpio*) and minnow (*Phoxinus phoxinus*). *Parasitology* 137, 629–639.
- Hartikainen H and Okamura B (2015) Ecology and evolution of malacosporean-bryozoan interactions. In Okamura B, Gruhl A and Bartholomew JL (eds), *Myxozoan Evolution, Ecology and Development*, Switzerland: Springer International Publishing, pp. 201–213.
- Hedrick RP, MacConnell E and Kinkelin P (1993) Proliferative kidney disease of salmonid fish. *Annual Review of Fish Diseases* 3, 227–290.
- Hedrick RP, Baxa DV, de Kinkelin P and Okamura B (2004) Malacosporean-like spores in urine of rainbow trout react with antibody and DNA probes to *Tetracapsuloides bryosalmonae*. *Parasitology Research* 92, 81–88.
- Hartikainen H, Gruhl A and Okamura B (2014) Diversification and repeated morphological transitions in endoparasitic cnidarians (Myxozoa: Malacosporea). *Molecular Phylogenetics and Evolution* 76, 261–269.
- Holland JW, Okamura B, Hartikainen H and Secombes CJ (2011) A novel minicollagen gene links cnidarians and myxozoans. *Proceedings of the Royal Society B* 278, 546–553.
- Kaltner H, Stippel M, Knaus M and El-Matbouli M (2007) Characterization of glycans in the developmental stages of *Myxobolus cerebralis* (Myxozoa), the causative agent of whirling disease. *Journal of Fish Diseases* 30, 637–647.
- Kent ML and Hedrick RP (1985) PKX, the causative agent of proliferative kidney disease (PKD) in pacific salmonid fishes and its affinities with the Myxozoa. *Journal of Parasitology* 32, 254–260.
- Kent ML and Hedrick RP (1986) Development of the PKX myxosporean in rainbow trout *Salmo gairdneri*. *Diseases of Aquatic Organisms* 1, 169–182.
- Kent ML, Andree KB, Bartholomew JL, El-Matbouli M, Desser SS, Devlin RH, Feist SW, Hedrick RP, Hoffmann RW, Khattra J, Hallett SL, Lester RJ, Longshaw M, Palenzeula O, Siddall ME and Xiao C (2001) Recent advances in our knowledge of the Myxozoa. *The Journal of Eukaryotic Microbiology* 48, 395–413.
- Liu Y, Zhou Z, Miao W, Zhang Y, Cao Y, He S, Bai D and Yao B. (2011) A chitinase from *Aeromonas veronii* CD3 with the potential to control myxozoan disease. *PLoS ONE* 6, e29091.
- Lom J and Dyková I (1992) Chapter 7 Myxosporidia (Phylum: Myxozoa). In Lom J and Dyková I (eds), *Protozoan Parasites of Fishes*. Amsterdam: Developments in Aquaculture and Fisheries Sciences, pp. 159–235.
- Lom J, Feist SW, Dyková I and Kepr T (1989) Brain myxoboliasis of bullhead, *Cottus gobio* L., due to *Myxobolus jiroveci* sp. nov.: light and electron microscope observations. *Journal of Fish Diseases* 12, 15–27.
- Lukeš J, Volf P and Lom J (1993) Detection of chitin in spores of *Myxobolus muelleri* and *M. subepithelialis* (myxosporea, Myxozoa). *Parasitology Research* 79, 439–440.
- Marcus E (1941) Sobre Bryozoa do Brasil. *Boletim Faculdade de Filosofia, Ciências e Letras, Universidade de São Paulo, Serie Zoologia* 10, 3–207.
- Medlin L, Elwood HJ, Stickel S and Sogin ML (1988) The characterization of enzymatically amplified eukaryotic 16S-like rRNA-coding regions. *Gene* 71, 491–499.
- Moreira GSA, Adriano EA, Silva MRM, Ceccarelli PS and Maia AAM (2014) The morphological and molecular characterization of *Henneguya rotunda* n. sp., a parasite of the gill arch and fins of *Salminus brasiliensis* from the Mogi Guaçu River, Brazil. *Parasitology Research* 113, 1703–1711.
- Morris DJ and Adams A (2006) Transmission of *Tetracapsuloides bryosalmonae* (Myxozoa: Malacosporea), the causative organism of salmonid proliferative kidney disease, to the freshwater bryozoan *Fredericella sultana*. *Parasitology* 133, 701–709.
- Morris D and Freeman M (2009) Hyperparasitism has wide-ranging implications for studies on the invertebrate phase of myxosporean (Myxozoa) life cycles. *International Journal for Parasitology* 40, 357–369.
- Morris DJ, Adams A and Richards RH (1997) Studies of the PKX parasite in rainbow trout via immunohistochemistry and immunogold electron microscopy. *Journal of Aquatic Animal Health* 9, 265–273.
- Morris DJ, Adams A and Richards RH (2000) Observations on the electron-dense bodies of the PKX parasite, agent of proliferative kidney disease in salmonids. *Diseases of Aquatic Organisms* 39, 201–209.
- Morsy K, Semmler M, Al-Olayan E and Mehlhorn H (2016) *Henneguya collaris* sp. nov., (Myxosporidia), parasite of the Greenband Parrotfish *Scarus collana* Rüppell, 1835 (Actinopterygii, Scaridae) from the Red Sea, Egypt. A light and electron microscopic study. *Parasitology Research* 115, 2253–2261.
- Muñoz P, Palenzuela O, Alvarez-Pellitero P and Sitjà-Bobadilla A (1999) Comparative studies on carbohydrates of several myxosporean parasites of fish using lectin histochemical methods. *Folia Parasitologica* 46, 241–247.
- Muñoz P, Sitjà-Bobadilla A and Álvarez-Pellitero P (2000) Ultrastructural localisation of carbohydrates in four myxosporean parasites. *Parasite* 7, 185–191.
- Okamura B, Gruhl A and Bartholomew JL (2015a) An introduction to myxozoan evolution, ecology and development. In Okamura B, Gruhl A and Bartholomew JL (eds), *Myxozoan Evolution, Ecology and Development*. Switzerland: Springer International Publishing, pp. 1–20.
- Okamura B, Gruhl A and Reft AJ (2015b) Cnidarian origins of the Myxozoa. In Okamura B, Gruhl A and Bartholomew JL (eds), *Myxozoan Evolution, Ecology and Development*, Switzerland: Springer International Publishing, pp. 45–68.
- Okamura B, Hartigan A and Naldoni J (2018) Extensive uncharted biodiversity: the parasite dimension. *Integrative and Comparative Biology* 58, 1132–1145.
- Patra S, Hartigan A, Morris DJ, Kodádková A and Holzer AS (2016) Description and experimental transmission of *Tetracapsuloides vermiformis* n. sp. (Cnidaria: Myxozoa) and guidelines for describing malacosporean species including reinstatement of *Buddenbrockia bryozoides* n. comb. (syn. *Tetracapsula bryozoides*). *Parasitology* 144, 497–511.
- Patra S, Bartošová-Sojčková P, Pecková H, Fiala I, Eszterbauer E and Holzer AS (2018) Biodiversity and host-parasite cophylogeny of *Sphaerospora* (sensu stricto) (Cnidaria: Myxozoa). *Parasites & Vectors* 11, 347.
- Redondo MJ, Cortadellas N, Palenzuela O and Alvarez-Pellitero P (2008) Detection of carbohydrate terminals in the enteric parasite *Enteromyxum scophthalmi* (Myxozoa) and possible interactions with its fish host *Psetta maxima*. *Parasitology Research* 102, 1257–1267.
- Rey L (2008) Parasitologia. 4ª edição. Editora Guanabara Koogan.
- Shpirer E, Chang ES, Diamant A, Rubinstein N, Cartwright P and Huchon D (2014) Diversity and evolution of myxozoan minicollagens and nematogalectins. *BMC Evolutionary Biology* 14, 205.
- Shpirer E, Diamant A, Cartwright P and Huchon D (2018) A genome wide survey reveals multiple nematocyst-specific genes in Myxozoa. *BMC Evolutionary Biology* 18, 138.
- Shul'man SS (1990) *Myxosporidia of the USSR. Russian Translations Series* 75. Rotterdam: A. A. Balkema.
- Supamattaya K, Fischer-Scherl T, Hoffmann RW and Boonyaratpalin S (1993) Light and electron microscope observations on presporogonic and sporogonic stages of *Sphaerospora epinepheli* (Myxosporea) in grouper (*Epinephelus malabaricus*). *The Journal of Eukaryotic Microbiology* 40, 71–80.
- Tamura K, Peterson D, Peterson N, Stecher G, Nei M and Kumar S (2011) MEGA5: molecular Evolutionary Genetics Analysis using maximum likelihood, evolutionary distance, and maximum parsimony methods. *Molecular Biology and Evolution* 28, 2731–2739.
- Whipps CM and Kent ML (2006) Phylogeography of the cosmopolitan marine parasite *Kudoa thyrssites* (Myxozoa: Myxosporea). *Journal of Eukaryotic Microbiology* 53, 364–373.