



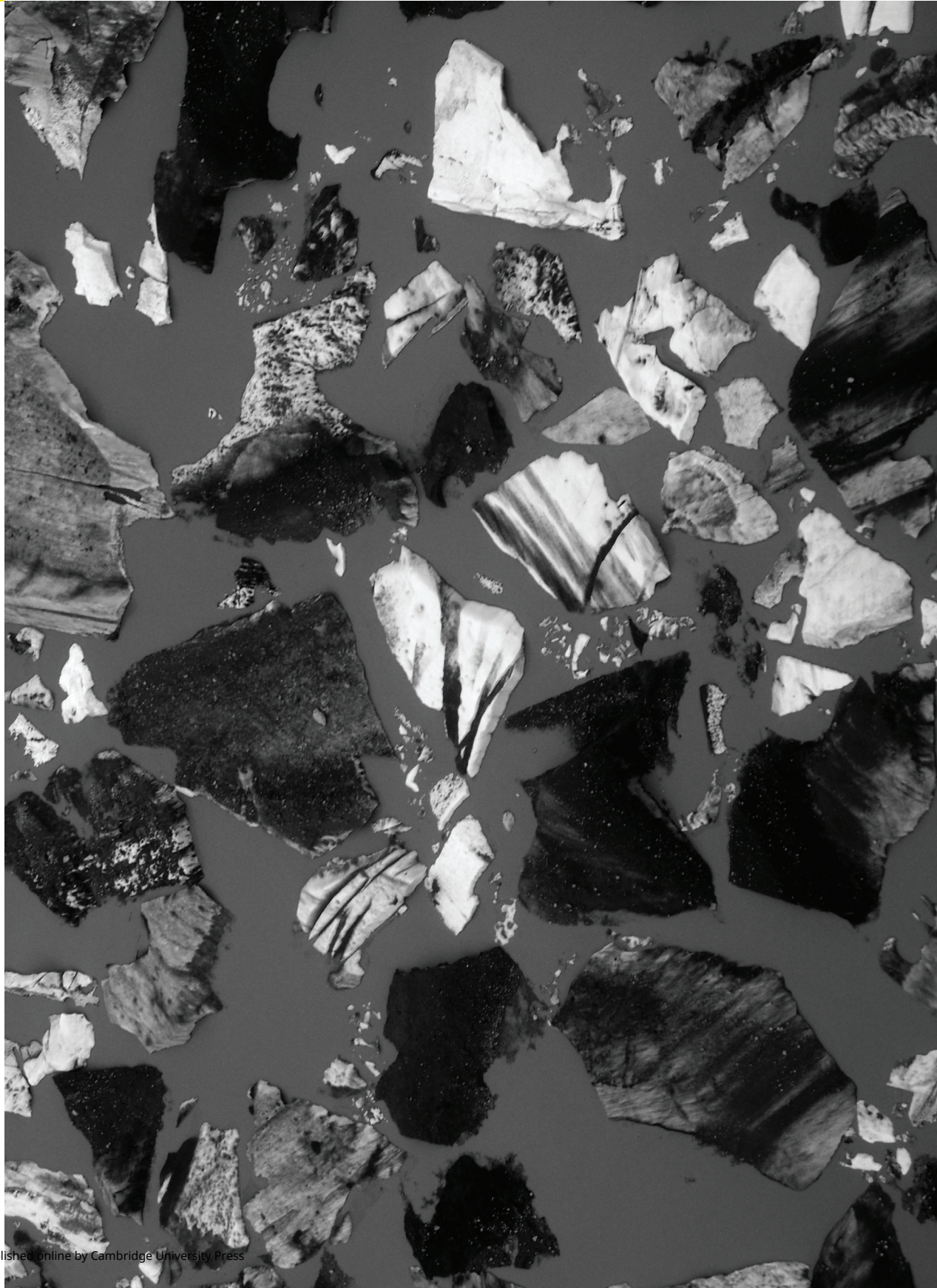
Vol 64 No 244

Journal of

ISSN: 0022-1430

GLACIOLOGY

Published for the International Glaciological Society, Cambridge, UK



International Glaciological Society

High Cross, Madingley Road, Cambridge CB3 0ET

JOURNAL OF GLACIOLOGY

Chief Editor

JG Cogley

Emeritus Chief Editor

TH Jacka

Associate Chief Editors

P Bartelt

SH Faria

H Jiskoot

F Pattyn

Scientific Editors

B Csathó

N Eckert

HA Fricker

CA Geiger

NF Glasser

R Greve

SJ Jones

M Koutnik

B Kulesa

H Pritchard

S Rasmussen

JM Shea

D Shugar

C Tijm-Reijmer

M Tranter

INTERNATIONAL GLACIOLOGICAL SOCIETY

Founder: G Seligman

President

FJ Navarro

Vice-Presidents

G Flowers

GH Gudmundsson

J Stroeve

Secretary General

MM Magnússon

Membership and Accounts Manager

LM Buckingham

INTERNATIONAL GLACIOLOGICAL SOCIETY

The Society was founded in 1936 to provide a focus for individuals interested in practical and scientific aspects of snow and ice. Membership is open to all individuals who have a scientific, practical or general interest in aspects of snow and ice study.

Papers on glaciology are printed in the *Journal of Glaciology*, which is published six times a year. The Society also publishes the *Annals of Glaciology*, a peer-reviewed, thematic journal, two to four times a year. The Society's news bulletin, *ICE*, is published three times a year.

The Society sponsors symposia, meetings and workshops in many countries throughout the year.

Journal of Glaciology publishes original articles and letters concerning scientific research into any aspect of ice and snow, and interactions between ice, snow, climate and other environmental phenomena including the biosphere and permafrost. Research techniques described in the Journal include, for example, field studies, remote sensing, computer modelling and laboratory studies. Research topics include the nature of and changes in mountain glaciers and ice sheets, including former ice sheets. For example, ice cores extracted from the glaciers and ice sheets reveal detailed information on past atmospheric composition and climate, and changes in the extent and thickness of the ice sheets are also related to climate change. The physical, chemical and crystallographic properties of ice and snow are included, especially but not only as they relate to the flow of ice and to past climate. The Journal also publishes studies of sea ice, and of icebergs, along with their interactions with climate on shorter time scales, and with the ocean. Snow and avalanche research is included in the Journal, with several recent articles investigating avalanche dynamics. Snow and ice on other planets is also within the realm of the Journal of Glaciology, as are studies of atmospheric ice.

Published for the International Glaciological Society, Cambridge, UK by Cambridge University Press

Printed in the UK by Bell and Bain Ltd.

Journal of **GLACIOLOGY**

CONTENTS Vol 64 No 244 2018

- 175 **William H. Kochtitzky, Benjamin R. Edwards, Ellyn M. Enderlin, Jersy Marino, Nelida Marinque**
Improved estimates of glacier change rates at Nevado Coropuna Ice Cap, Peru
- 185 **Joseph A. Graly, Kathy J. Licht, Christine M. Kassab, Broxton W. Bird, Michael R. Kaplan**
Warm-based basal sediment entrainment and far-field Pleistocene origin evidenced in central Transantarctic blue ice through stable isotopes and internal structures
- 197 **Xu Ji, Erkan Oterkus**
Physical mechanism of ice/structure interaction
- 208 **Andrew G. Williamson, Ian C. Willis, Neil S. Arnold, Alison F. Banwell**
Controls on rapid supraglacial lake drainage in West Greenland: an Exploratory Data Analysis approach
- 227 **Uta Krebs-Kanzow, Paul Gierz, Gerrit Lohmann**
Estimating Greenland surface melt is hampered by melt induced dampening of temperature variability
- 236 **C. Vincent, M. Dumont, D. Six, F. Brun, G. Picard, L. Arnaud**
Why do the dark and light ogives of Forbes bands have similar surface mass balances?
- 247 **Eviatar Bach, Valentina Radić, Christian Schoof**
How sensitive are mountain glaciers to climate change? Insights from a block model
- 259 **Meilin Zhu, Tandong Yao, Wei Yang, Baiqing Xu, Guanjian Wu, Xiaojun Wang, Ying Xie**
Reconstruction of the mass balance of Muztag Ata No. 15 glacier, eastern Pamir, and its climatic drivers
- 275 **Harry Zekollari, Philippe Huybrechts**
Statistical modelling of the surface mass-balance variability of the Morteratsch glacier, Switzerland: strong control of early melting season meteorological conditions
- 289 **Rebecca L. Pyne, Elizabeth D. Keller, Silvia Canessa, Nancy A. N. Bertler, Alex R. Pyne, Darcy Mandeno, Paul Vallelonga, Stefanie Semper, Helle A. Kjær, Ed Hutchinson, W. Troy Baisden**
A novel approach to process brittle ice for continuous flow analysis of stable water isotopes
- 300 **Daiki Sakakibara, Shin Sugiyama**
Ice front and flow speed variations of marine-terminating outlet glaciers along the coast of Prudhoe Land, northwestern Greenland
- 311 **Darri Eythorsson, Sigurdur M. Gardarsson, Andri Gunnarsson, Birgir Hrafnkelsson**
Statistical summer mass-balance forecast model with application to Brúarjökull glacier, South East Iceland
- 321 **Karen E. Alley, Ted A. Scambos, Robert S. Anderson, Harihar Rajaram, Allen Pope, Terry M. Haran**
Continent-wide estimates of Antarctic strain rates from Landsat 8-derived velocity grids
- 333 **Brent M. Minchew, G. Hilmar Gudmundsson, Alex S. Gardner, Fernando S. Paolo, Helen A. Fricker**
Modeling the dynamic response of outlet glaciers to observed ice-shelf thinning in the Bellingshausen Sea Sector, West Antarctica

Letters

- 343 **Jennifer K. Hutchings, Andrew Roberts, Cathleen A. Geiger, Jacqueline Richter-Menge**
Corrigendum: Spatial and temporal characterisation of sea-ice deformation
- 347 **C. Simon L. Ommanney, Laura Thomson**
Corrigendum: Crusoe Glacier tongue, Axel Heiberg Island, Nunavut