

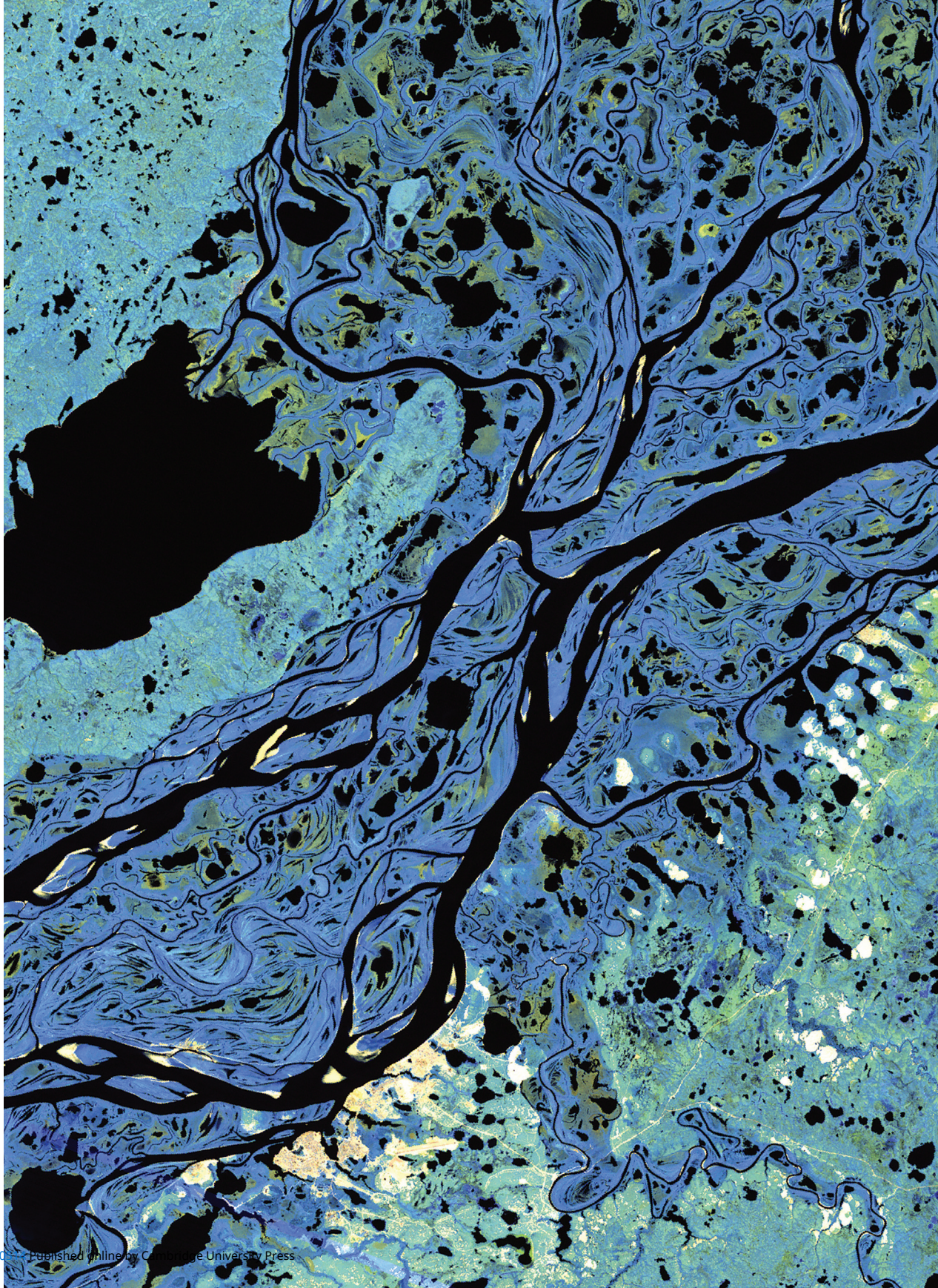


Vol 62 No 231

Journal of

GLACIOLOGY

Published for the International Glaciological Society, Cambridge, UK



Journal of **GLACIOLOGY**

CONTENTS Vol 62 No 231 2016

- 1 **C.A. Middleton, C. Thomas, A. De Wit, J.-L. Tison**
Visualizing brine channel development and convective processes during artificial sea-ice growth using Schlieren optical methods
- 18 **Pierre Dalban Canassy, Claudia Rösli, Fabian Walter**
Seasonal variations of glacier seismicity at the tongue of Rhonegletscher (Switzerland) with a focus on basal icequakes
- 31 **Skylar A. Haines, Paul A. Mayewski, Andrei V. Kurbatov, Kirk A. Maasch, Sharon B. Sneed, Nicole E. Spaulding, Daniel A. Dixon, Pascal D. Bohleber**
Ultra-high resolution snapshots of three multi-decadal periods in an Antarctic ice core
- 37 **Sophie Berger, Lionel Favier, Reinhard Drews, Jean-Jacques Derwael, Frank Pattyn**
The control of an uncharted pinning point on the flow of an Antarctic ice shelf
- 46 **Guangjian Wu, Xuelei Zhang, Chenglong Zhang, Tianli Xu**
Mineralogical and morphological properties of individual dust particles in ice cores from the Tibetan Plateau
- 54 **P.A. Mayewski, A. Kuli, G. Casassa, M. Arévalo, D.A. Dixon, B. Grigholm, M.J. Handley, H. Hoffmann, D.S. Introne, A.G. Kuli, M. Potocki, S.B. Sneed**
Initial reconnaissance for a South Georgia ice core
- 62 **Ian Joughin, Ben E. Smith, Ian M. Howat, Twila Moon, Ted A. Scambos**
A SAR record of early 21st century change in Greenland
- 72 **Trine S. Jensen, Jason E. Box, Christine S. Hvidberg**
A sensitivity study of annual area change for Greenland ice sheet marine terminating outlet glaciers: 1999–2013
- 82 **Jason M. Amundson**
A mass-flux perspective of the tidewater glacier cycle
- 94 **Iulian-Horia Holobacă**
Recent retreat of the Elbrus glacier system
- 103 **Shuji Fujita, Kumiko Goto-Azuma, Motohiro Hirabayashi, Akira Hori, Yoshinori Iizuka, Yuko Motizuki, Hideaki Motoyama, Kazuya Takahashi**
Densification of layered firn in the ice sheet at Dome Fuji, Antarctica
- 124 **Rubén Basantes-Serrano, Antoine Rabatel, Bernard Francou, Christian Vincent, Luis Maisincho, Bolívar Cáceres, Remigio Galarraga, Danilo Alvarez**
Slight mass loss revealed by reanalyzing glacier mass-balance observations on Glaciar Antisana 15 α (inner tropics) during the 1995–2012 period
- 137 **Victoria V. Miles, Martin W. Miles, Ola M. Johannessen**
Satellite archives reveal abrupt changes in behavior of Helheim Glacier, southeast Greenland
- 147 **Brent Minchew, Mark Simons, Helgi Björnsson, Finnur Pálsson, Mathieu Morlighem, Helene Seroussi, Eric Larour, Scott Hensley**
Plastic bed beneath Hofsjökull Ice Cap, central Iceland, and the sensitivity of ice flow to surface meltwater flux
- 159 **Mike R. James, Penelope How, Peter M. Wynn**
Pointcatcher software: analysis of glacial time-lapse photography and integration with multitemporal digital elevation models
- 170 **Alexander D. Fraser, Melissa A. Nigro, Stefan R.M. Ligtenberg, Benoit Legresy, Mana Inoue, John J. Cassano, Peter Kuipers Munneke, Jan T.M. Lenaerts, Neal W. Young, Adam Treverrow, Michiel Van Den Broeke, Hiroyuki Enomoto**
Drivers of ASCAT C band backscatter variability in the dry snow zone of Antarctica
- 185 **Thomas E. Shaw, Ben W. Brock, Catriona L. Fyffe, Francesca Pellicciotti, Nick Rutter, Fabrizio Diotri**
Air temperature distribution and energy-balance modelling of a debris-covered glacier
- 199 **Florian A. Ziemer, Regine Hock, Andy Aschwanden, Constantine Khroulev, Christian Kienholz, Andrew Melkonian, Jing Zhang**
Modeling the evolution of the Juneau Icefield between 1971 and 2100 using the Parallel Ice Sheet Model (PISM)