

Article

## Phylogenetic paleoecology: macroecology within an evolutionary framework

James C. Lamsdell\*  and Curtis R. Congreve

James C. Lamsdell. Department of Geology and Geography, West Virginia University, Morgantown, West Virginia 26506, USA. E-mail: [james.lamsdell@mail.wvu.edu](mailto:james.lamsdell@mail.wvu.edu)

Curtis R. Congreve. Marine, Earth & Atmospheric Sciences Department, North Carolina State University, Raleigh, North Carolina 27607, USA. E-mail: [crcongre@ncsu.edu](mailto:crcongre@ncsu.edu)

Accepted: 10 December 2020

\*Corresponding author.

The burgeoning field of phylogenetic paleoecology (Lamsdell et al. 2017) represents a synthesis of the related but differently focused fields of macroecology (Brown 1995) and macroevolution (Stanley 1975). Through a combination of the data and methods of both disciplines, phylogenetic paleoecology leverages phylogenetic theory and quantitative paleoecology to explain the temporal and spatial variation in species diversity, distribution, and disparity. Phylogenetic paleoecology is ideally situated to elucidate many fundamental issues in evolutionary biology, including the generation of new phenotypes and occupation of previously unexploited environments; the nature of relationships among character change, ecology, and evolutionary rates; determinants of the geographic distribution of species and clades; and the underlying phylogenetic signal of ecological selectivity in extinctions and radiations. This is because phylogenetic paleoecology explicitly recognizes and incorporates the quasi-independent nature of evolutionary and ecological data as expressed in the dual biological hierarchies (Eldredge and Salthe 1984; Congreve et al. 2018; Fig. 1), incorporating both as covarying factors rather than focusing on one and treating the other as error within the dataset.

As well as making use of ecological and phylogenetic data, phylogenetic paleoecology incorporates modern statistical methods from paleoecology and biogeographic studies

(Legendre 1990; Croft et al. 2018) along with phylogenetic comparative methods (Cornwell and Nakagawa [2017], which can be readily applied to paleontological data; Bapst 2014) to determine whether similarity in traits between species is due to close evolutionary relationships or selective processes. Combining methods and multiple lines of data (Fig. 2) permits analysis of evolutionary dynamics to determine drivers of evolutionary change and the relative import of abiotic, biotic, and contingent historical processes in guiding evolutionary and ecological shifts across space and time.

Although only recently synthesized into a distinct research field, phylogenetic paleoecology owes its genesis to the advent of paleobiology. Many of the methodologies used in phylogenetic paleoecology parallel those used in biology, and a number of paleobiological studies have incorporated what we would now recognize as a phylogenetic paleoecology approach. Pioneering work by Elizabeth Vrba and Blaire Van Valkenburgh explicitly considered macroecological phenomena within the framework of species relationships. Vrba's theoretical work on sorting and selection (Vrba 1984b,c, 1989; Vrba and Eldredge 1984; Vrba and Gould 1986), as exemplified by her exploration of the ecological and phylogenetic determinants of survivorship and species longevity in bovids (Vrba 1984a), demonstrated the quasi-independence of ecological and evolutionary data and how phylogeny can be critical

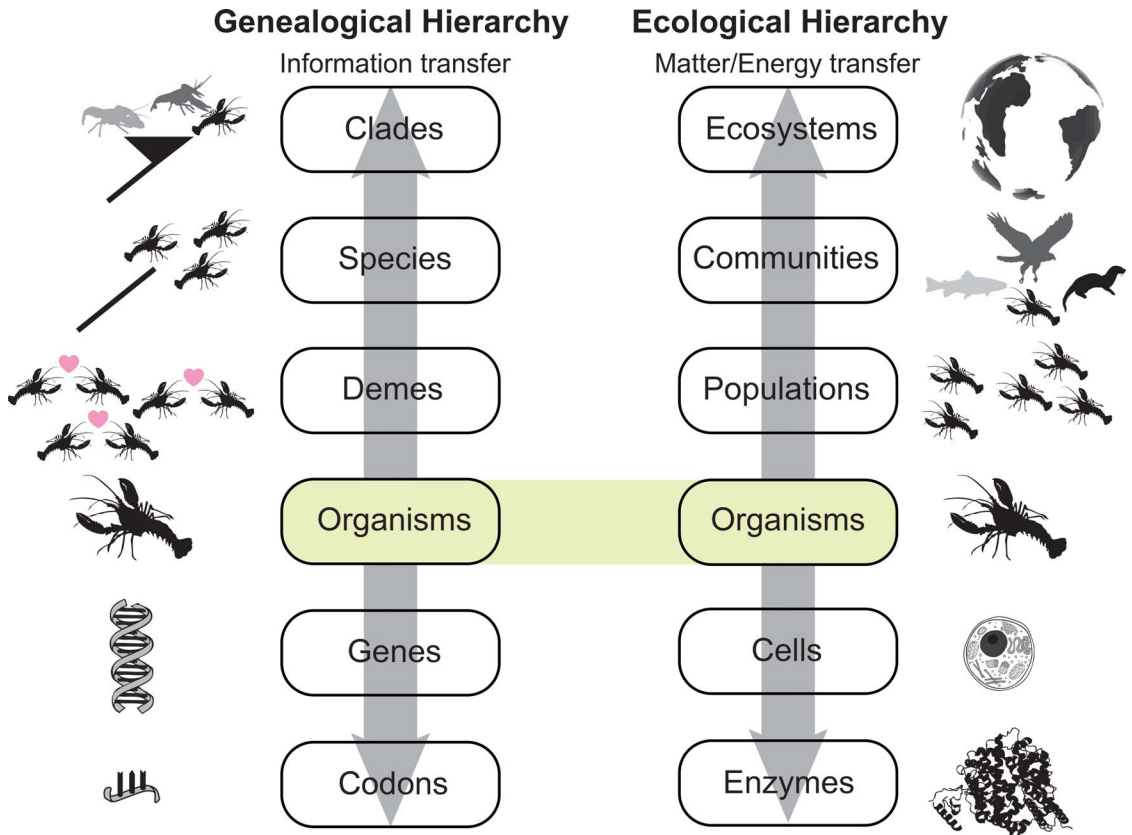


FIGURE 1. Depiction of the genealogical and ecological hierarchies. Organisms act as the sole interactors within the system, occurring in both the ecological and the genealogical hierarchies, and therefore act as the only unit to be under the direct influence of both historically contingent (genealogical) processes and deterministic (matter/energy) factors. This highlighted relationship between the hierarchies is otherwise known as the process of natural selection. (In color online.)

in identifying contingent historical or ecological determinants of macroevolutionary change. Van Valkenburgh's extensive study of carnivoran evolution (Van Valkenburgh 1991, 1995, 1999) and recognition of a macroevolutionary ratchet in canids (Van Valkenburgh et al. 2004) established the importance of an accurate understanding of species relationships for recognizing evolutionary trends. While these initial studies used taxonomy as a proxy for phylogenetic relationships, later work emphasized the use of phylogenetic topologies in macroecological studies (Wang et al. 2004; Friscia et al. 2007; Slater and Van Valkenburgh 2008; Slater et al. 2009). More recently, an increasing number of studies have analyzed ecological trends within a phylogenetic context, applying the methodology to diverse groups such as chelicerate arthropods

(Lamsdell and Braddy 2010; Lamsdell 2016), ankylosaurian dinosaurs (Arbour et al. 2016), early vertebrates (Sallan et al. 2018), and crocodyliform archosaurs (Melstrom and Irmis 2019).

From these beginnings, phylogenetic paleoecology has the potential to contribute to a diverse set of subdisciplines within paleobiology and evolutionary biology. As in any field, the directions that the research takes will be in a large part dictated by the experiences and interests of the people who practice it, and one of the main strengths of phylogenetic paleoecology is the diverse nature of the researchers applying the method with regard to their backgrounds, research interests, and taxonomic expertise. We recognize the potential for exciting future developments in phylogenetic paleoecology that include

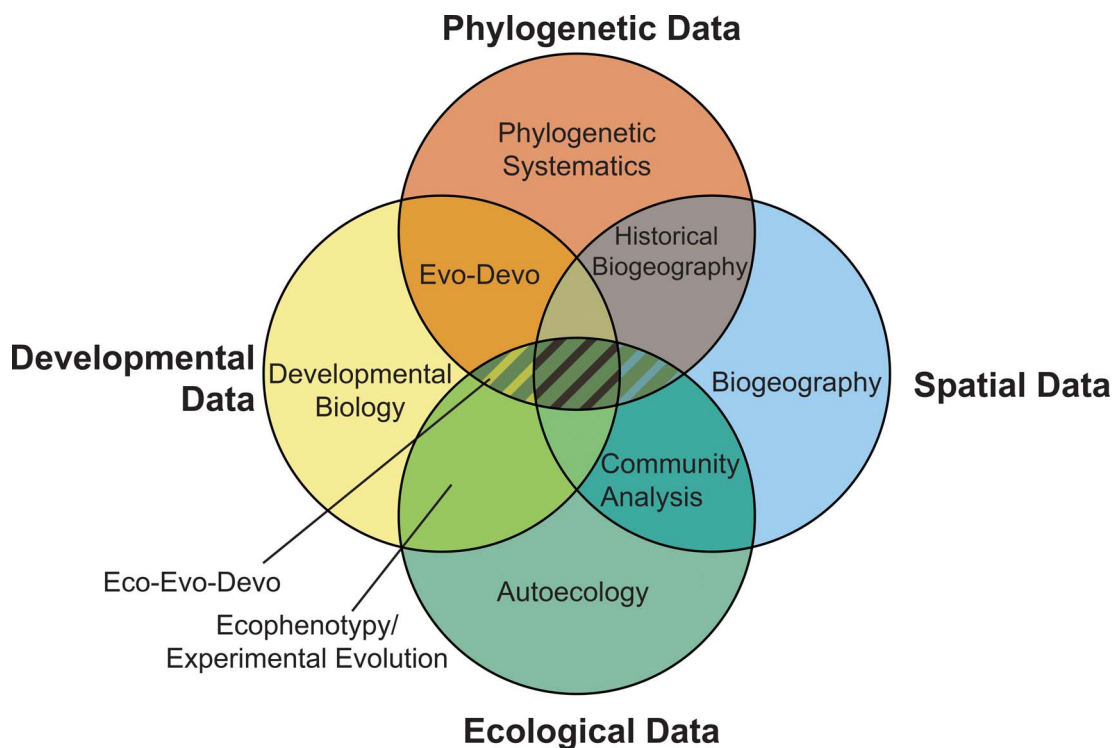


FIGURE 2. The four primary sources of data used in evolutionary study and the potential relationships between them. Fields of study utilizing a given data source are labeled, with fields that incorporate multiple sources of data accommodated within the regions of overlap. Phylogenetic paleoecology occupies the intersection between phylogenetic and ecological data and can incorporate data and aspects from each of the fields of study encompassed within the hatched region. (In color online.)

contributions to a variety of interdisciplinary fields. Particularly, we expect phylogenetic paleoecology will synergize strongly with: (1) ecological evolutionary developmental biology (eco-evo-devo; Gilbert et al. 2015) in providing a comprehensive framework for evaluating links between ecology, development, adaptation, and the occurrence of evolutionary novelty (Erwin 2015, 2020) through deep time; (2) studies into the causal factors underlying evolutionary radiations, through combining sources of data to differentiate between models of hierarchical interactions (the “sloshing bucket”; Eldredge 2003, 2008) and biogeographic complexity (Stigall et al. 2017) or biogeographic hotspots (e.g., Crame 2002), which act as a potential merger between the two approaches; and (3) conservation paleobiology (Dietl et al. 2015; Kosnik and Kowalewski 2016), which will benefit from the integration of nonanalogous communities and ecosystems into modern conservation models, as well as

facilitating discrimination of the impact of environmental preference, evolutionary history, and developmental constraints on current, past, and future species distributions. The interdisciplinary nature of these types of investigation and the need for well-vetted data means that the future of the field is likely not composed of studies confined to single papers focusing on a full synthesis of a given taxonomic group or historical event, but rather multiple individual (but integrated) publications working toward an overarching synthesis. This type of work will require concerted collaboration between research groups with different skill sets sharing information and methods to publish a suite of interrelated studies that build upon one another.

In 2018, a session was convened as part of the Geological Society of America Annual Meeting in Indianapolis, Indiana, to bring together paleobiologists utilizing phylogenetic paleoecology and showcase cutting-edge research

within the field. This special issue compiles the results of this meeting and subsequent collaborations.

The papers in this special issue represent the full range of disciplines encompassed within the field of phylogenetic paleoecology and can broadly be divided into three intergrading sets (Fig. 3). The first set of papers focus on incorporating geographic data with phylogenetic hypotheses. Lawing (2021) begins the special issue with a synthesis and review of the utility of PaleoPhyloGeographic species distribution models in understanding how species and communities respond to climate change. Lam et al. (2021) then present a study of the biogeography of diploporan blastozoan echinoderms across the great Ordovician biodiversification event, using the phylogeny of the clade to infer ancestral areas of occupation and showing that diploporan biogeography evolved through episodes of dispersal throughout the Ordovician, with dispersal events driven by changes in oceanic and epicontinental currents. Next, Bauer (2021) examines the macroevolutionary trends of eublastoid echinoderms within a phylogenetically informed biogeographic framework, showing that, once again, dispersal events predominate throughout their evolutionary history. Finally, Friend et al. (2021) complete the paper set by bridging the topics of geography and hierarchical sorting, reexamining a classic macroevolutionary study in volutid gastropods and showing that, when placed in a phylogenetic and geographic context, shifts to non-planktotrophy within the group were the result of geographic contingency rather than species sorting.

The second set of papers broadly focus on the complex relationship between the evolutionary and ecological hierarchies (sensu Congreve et al. 2018) as expressed by patterns of ecological conservatism and convergence and their impact on survivorship. Cole (2021) examines the evolutionary history of diplobathrid crinoids, utilizing a genus-level phylogeny to determine controls of extinction selectivity as indicated by genus longevity. An analysis of the combined effects of species richness, habitat preference, body size, filtration fan density, and food size selectivity shows that ecology has an important but complex role in determining

crinoid genus duration, with traits exhibiting varying degrees of phylogenetic signal. Hughes and Lamsdell (2021) explore the phylogenetic distribution of prey size in stylonurine eurypterids and the role that prey specialization may have had on the survivorship of certain eurypterid groups during the Late Devonian biotic crisis, determining that prey availability may have mediated their transition to freshwater environments but that survivorship was most likely influenced by other traits, such as geographic range. Sclafani et al. (2021) tackle the relationship between evolutionary history and ecology directly by comparing metrics for ecological distance and phylogenetic distance between strophomenid brachiopods. Ecological distance and phylogenetic distance are shown not to correlate, reinforcing the conflicting relationship between the two biological hierarchies. Chang and Skipwith (2021) take a community approach to studying ecological and phylogenetic relatedness through the lens of competitive exclusion. A dataset of bivalve communities from the Cenozoic of the San Joaquin Basin reveals that neither competitive exclusion nor environmental filtering have predominantly influenced community composition within the basin over the last 27 Myr. To conclude the set, Falk et al. (2021) link to the final pair of papers in exploring patterns of morphological convergence in relation to the phylogenetic distribution of ecological life habit. Potential links between phylogeny, ecology, and morphology are analyzed through a morphometric analysis of avian hindlimb measurements, suggesting that while changes in morphospace occupation are visible through time as avians shift to a modern hindlimb structure, the interactions between phylogeny and ecology are largely complex.

The final set comprises two papers that incorporate aspects of evolutionary developmental biology (Raff 2000; Hall 2003; Müller 2007; de Robertis 2008) and its extension, ecological evolutionary developmental biology (Gilbert et al. 2015), to determine the underlying biological processes leading to morphological change and the role of ecological pressure as a mediating factor. Pietsch et al. (2021) study the evolution of the extreme parietal sinus of gastropods, using shell

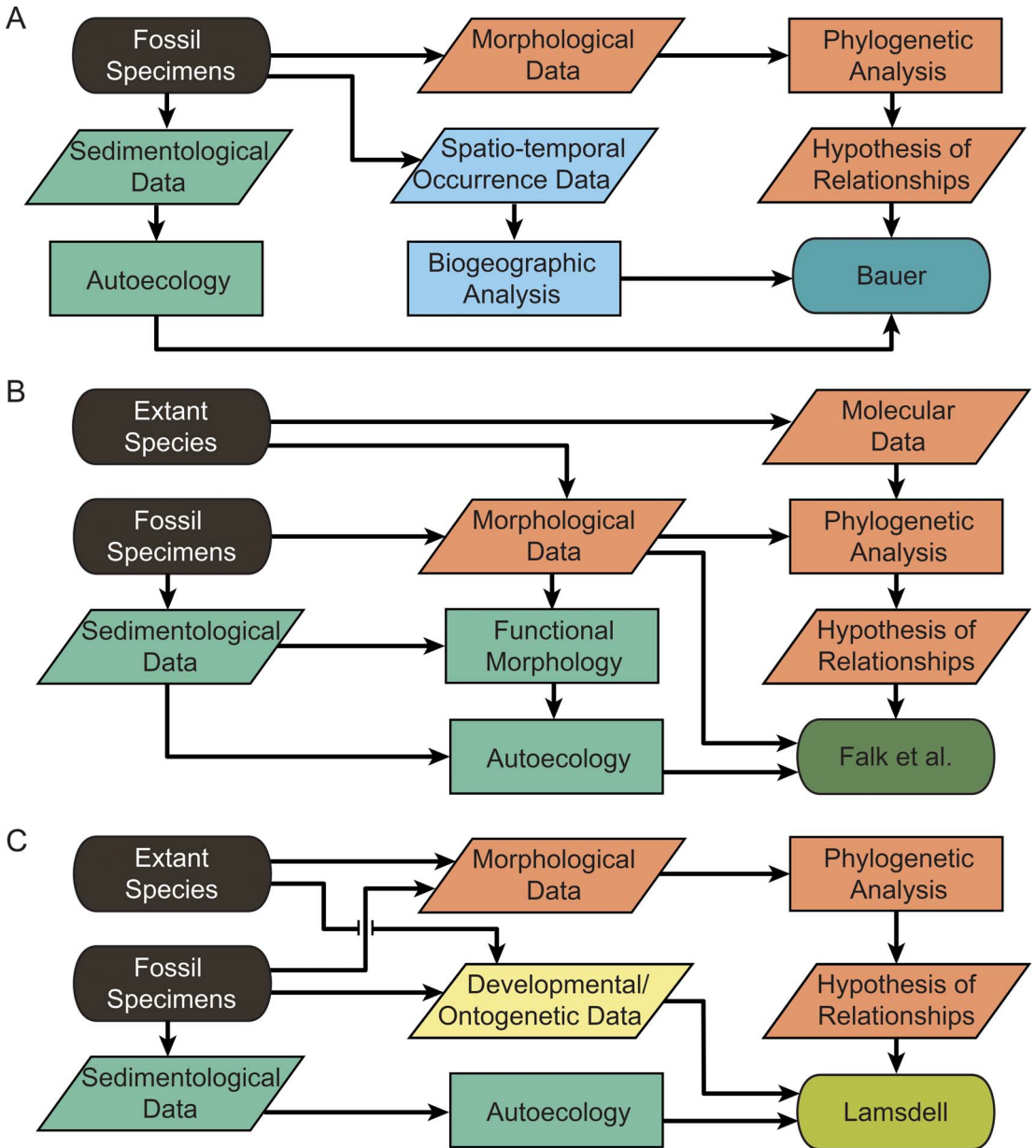


FIGURE 3. Data flow diagrams for studies within each set of papers in this special issue, demonstrating how the papers combine different types of data within phylogenetic paleoecology. Each source of data or analysis is color coded to the relevant region of Fig. 2. Fossil and extant species represent the source from which all data are derived, and as such they are represented as the central overlap between all four data types. A, Data flow diagram for Bauer (2021), who combines biogeographic, phylogenetic, and ecological data of extinct blastoid echinoderms to analyze how these factors shaped the clade’s evolutionary history. B, Data flow diagram for Falk et al. (2021), who combine ecological data from extinct and extant bird species with a phylogenetic framework and morphological data from avian hindlimbs to explore the relative impacts of ecology and phylogenetic history on morphology. C, Data flow diagram for Lamsdell (2021), who incorporates ontogenetic data from extant and extinct horseshoe crab species with ecological data within a phylogenetic framework to determine the influence of ecological shifts and importance of evolutionary history in mediating mode of evolution. (In color online.)

microstructure and growth patterns to show that the convergent evolution of this feature within some groups may be due to parallelism. Finally, Lamsdell (2021) presents a novel method for quantifying heterochronic trends within evolutionary lineages and applies it to xiphosuran arthropods, exploring patterns of pedomorphosis and peramorphosis in relation to shifts in ecological occupation. The data reveal convergent patterns of heterochrony in response to occupation of nonmarine environments but divergent responses in the type of heterochronic change, once again demonstrating the complex nature of the relationship between genealogical and ecological hierarchies.

The collection of papers included in this special issue addresses important macroevolutionary and macroecological phenomena through leveraging phylogenetic and ecological data with the aim of determining how fundamental evolutionary processes mediate taxonomic, ecological, and morphological diversity. These papers demonstrate not only the current state of the art of research within phylogenetic paleoecology, but also the potential for the discipline to tackle wide-ranging questions critical to understanding the evolution of both ancient and modern clades and ecosystems. We hope this special issue will encourage researchers to continue developing the methods presented here and to apply them to new taxonomic groups, geological events, and evolutionary questions.

### Acknowledgments

The guest editors first and foremost thank the authors for their valuable contributions to this special issue. Together, they have produced a compilation of exciting, cutting-edge research that showcases the full potential of the field of phylogenetic paleoecology. We also express our gratitude to M. Patzkowsky for his encouragement and support in proposing this special issue and to the entire *Paleobiology* editorial board for accepting our proposal. We are also grateful to all the referees who provided insightful reviews of the submitted manuscripts. This special issue would not have been possible without the tireless work of

J. Kastigar, who ensured everything functioned smoothly behind the scenes. J.C.L. appreciates the advice of B. Anderson, E. Hughes, N. Machida, and S. Ocon on earlier drafts of the figures. Finally, we also thank our colleagues who helped develop and formalize the concept of phylogenetic paleoecology as a distinct field, particularly M. Hopkins, M. Patzkowsky, and A. Z. Krug, our coauthors on the original phylogenetic paleoecology paper. J.C.L. is supported by National Science Foundation CAREER award EAR-1943082 “Exploring Environmental Drivers of Morphological Change through Phylogenetic Paleocology.”

### Literature Cited

- Arbour, V. M., L. E. Zanno, and T. Gates. 2016. Ankylosaurian dinosaur palaeoenvironmental associations were influenced by extirpation, sea-level fluctuation, and geodispersal. *Palaeogeography, Palaeoclimatology, Palaeoecology* 449:289–299.
- Bapst, D. W. 2014. Preparing paleontological datasets for phylogenetic comparative methods. Pp. 515–544 in L. Garamszegi, ed. *Modern phylogenetic comparative methods and their application in evolutionary biology*. Springer, Berlin.
- Bauer, J. E. 2021. Paleobiogeography, paleoecology, diversity, and speciation patterns in the Eublastoidea (Blastozoa: Echinodermata). *Paleobiology* 47:221–235.
- Brown, J. H. 1995. *Macroecology*. University of Chicago Press, Chicago.
- Chang, L. M., and P. L. Skipwith. 2021. Relatedness and the composition of communities over time: evaluating phylogenetic community structure in the late Cenozoic record of bivalves. *Paleobiology* 47:301–313.
- Cole, S. R. 2021. Hierarchical controls on extinction selectivity across the diplobathrid crinoid phylogeny. *Paleobiology* 47:251–270.
- Congreve, C. R., A. R. Falk, and J. C. Lamsdell. 2018. Biological hierarchies and the nature of extinction. *Biological Reviews* 93:811–826.
- Cornwell, W., and S. Nakagawa. 2017. Phylogenetic comparative methods. *Current Biology* 27:R333–R336.
- Crame, J. A. 2002. Evolution of taxonomic diversity gradients in the marine realm: a comparison of Late Jurassic and recent bivalve faunas. *Paleobiology* 28:184–207.
- Croft, D. A., D. F. Su, and S. W. Simpson. 2018. *Methods in paleoecology*. Springer, Cham, Switzerland.
- De Robertis, E. M. 2008. Evo-devo: variations on ancestral themes. *Cell* 132:185–195.
- Dietl, G. P., S. M. Kidwell, M. Brenner, D. A. Burney, K. W. Flessa, S. T. Jackson, and P. L. Koch. 2015. Conservation paleobiology: leveraging knowledge of the past to inform conservation and restoration. *Annual Review of Earth and Planetary Sciences* 43:79–103.
- Eldredge, N. 2003. The sloshing bucket: how the physical realm controls evolution. Pp. 3–32 in J. Crutchfield and P. Shuster, eds. *Evolutionary dynamics. Exploring the interplay of selection, accident, neutrality, and function*. SFI studies in the sciences of complexity series. Oxford University Press, New York.
- Eldredge, N. 2008. Hierarchies and the sloshing bucket: toward the unification of evolutionary biology. *Evolution: Education and Outreach* 1:10–15.

- Eldredge, N. I., and S. N. Salthé. 1984. Hierarchy and evolution. *Oxford Surveys in Evolutionary Biology* 1:184–208.
- Erwin, D. H. 2015. Novelty and innovation in the history of life. *Current Biology* 25:R930–R940.
- Erwin, D. H. 2020. A conceptual framework of evolutionary novelty and innovation. *Biological Reviews*. doi: 10.1111/brv.12643
- Falk, A. R., J. C. Lamsdell, and E. Gong. 2021. Principal component analysis of avian hind limb and foot morphometrics and the relationship between ecology and phylogeny. *Paleobiology* 47:314–336.
- Friend, D. S., B. M. Anderson, and W. D. Allmon. 2021. Geographic contingency, not species sorting, dominates macroevolutionary dynamics in an extinct clade of neogastropods (*Volutospina*; Volutidae). *Paleobiology* 47:236–250.
- Frischia, A. R., B. Van Valkenburgh, and A. R. Beknevičius. 2007. An ecomorphological analysis of extant small carnivorans. *Journal of Zoology* 272:82–100.
- Gilbert, S. F., T. C. G. Bosch, and C. Ledón-Rettig. 2015. Eco-evo-devo: developmental symbiosis and developmental plasticity as evolutionary agents. *Nature Reviews Genetics* 16:611–622.
- Hall, B. K. 2003. Evo-devo: evolutionary developmental mechanisms. *International Journal of Developmental Biology* 47:491–495.
- Hughes, E. S., and J. C. Lamsdell. 2021. Discerning the diets of sweep-feeding eurypterids: assessing the importance of prey size to survivorship across the Late Devonian mass extinction in a phylogenetic context. *Paleobiology* 47:271–283.
- Kosnik, M. A., and M. Kowalewski. 2016. Understanding modern extinctions in marine ecosystems: the role of palaeoecological data. *Biology Letters* 12:20150951.
- Lam, A. R., S. L. Sheffield, and N. J. Matzke. 2021. Estimating dispersal and evolutionary dynamics in diploporan blastozoans (Echinodermata) across the great Ordovician biodiversification event. *Paleobiology* 47:198–220.
- Lamsdell, J. C. 2016. Horseshoe crab phylogeny and independent colonizations of fresh water: ecological invasion as a driver for morphological innovation. *Palaeontology* 59:181–194.
- Lamsdell, J. C. 2021. A new method for quantifying heterochrony in evolutionary lineages. *Paleobiology* 47:363–384.
- Lamsdell, J. C., and S. J. Braddy. 2010. Cope's rule and Romer's theory: patterns of diversity and gigantism in eurypterids and Palaeozoic vertebrates. *Biology Letters* 6:265–269.
- Lamsdell, J. C., C. R. Congreve, M. J. Hopkins, A. Z. Krug, and M. E. Patzkowsky. 2017. Phylogenetic paleoecology: tree-thinking and ecology in deep time. *Trends in Ecology and Evolution* 32:452–463.
- Lawing, A. M. 2021. The geography of phylogenetic paleoecology: integrating data and methods to better understand biotic response to climate change. *Paleobiology* 47:178–197.
- Legendre, P. 1990. Quantitative methods and biogeographic analysis. Pp. 9–34 in D. J. Garbary and G. R. South, eds. *Evolutionary biogeography of the marine algae of the North Atlantic*. NATO ASI Series (Series G: Ecological Sciences), Vol. 22. Springer, Berlin.
- Melstrom, K. M., and R. B. Irmis. 2019. Repeated evolution of herbivorous crocodyliforms during the age of dinosaurs. *Current Biology* 29:2389–2395.
- Müller, G. B. 2007. Evo-devo: extending the evolutionary synthesis. *Nature Reviews Genetics* 8:943–949.
- Pietsch, C., B. M. Anderson, L. M. Maistros, E. C. Padalino, and W. D. Allmon. 2021. Convergence, parallelism, and function of extreme parietal callus in diverse groups of Cenozoic Gastropoda. *Paleobiology* 47:337–362.
- Raff, R. A. 2000. Evo-devo: the evolution of a new discipline. *Nature Reviews Genetics* 1:74–79.
- Sallan, L., M. Friedman, R. S. Sansom, C. M. Bird, and I. J. Sansom. 2018. The nearshore cradle of early vertebrate diversification. *Science* 362:460–464.
- Sclafani, J. A., C. R. Congreve, and M. E. Patzkowsky. 2021. Does evolutionary relatedness predict ecological similarity? *Paleobiology* 47:284–300.
- Slater, G. J., and B. Van Valkenburgh. 2008. Long in the tooth: evolution of sabertooth cat cranial shape. *Paleobiology* 34:403–419.
- Slater, G. J., E. R. Dumont, and B. Van Valkenburgh. 2009. Implications of predatory specialization for cranial form and function in canids. *Journal of Zoology* 278:181–188.
- Stanley, S. M. 1975. A theory of evolution above the species level. *Proceedings of the National Academy of Sciences USA* 72:646–650.
- Stigall, A. L., J. E. Bauer, A. L. Lam, and D. A. Wright. 2017. Biotic immigration events, speciation, and the accumulation of biodiversity in deep time. *Global and Planetary Change* 148:242–257.
- Van Valkenburgh, B. 1991. Iterative evolution of hypercarnivory in canids (Mammalia: Carnivora): evolutionary interactions among sympatric predators. *Paleobiology* 17:340–362.
- Van Valkenburgh, B. 1995. Tracking ecology over geological time: evolution within guilds of vertebrates. *Trends in Ecology and Evolution* 10:71–76.
- Van Valkenburgh, B. 1999. Major patterns in the history of carnivorous mammals. *Annual Review of Earth and Planetary Sciences* 27:463–493.
- Van Valkenburgh, B., X. Wang, and J. Damuth. 2004. Cope's rule, hypercarnivory, and extinction in North American canids. *Science* 306:101–104.
- Vrba, E. S. 1984a. Evolutionary pattern and process in the sister-group Alcelaphini-Aepycerotini (Mammalia: Bovidae). Pp. 62–79 in N. I. Eldredge and S. M. Stanley, eds. *Living fossils*. Springer-Verlag, New York.
- Vrba, E. S. 1984b. Patterns in the fossil record and evolutionary processes. Pp. 115–139 in M. W. Ho and P. Saunders, eds. *Beyond neo-Darwinism*. Academic Press, London.
- Vrba, E. S. 1984c. What is species selection? *Systematic Zoology* 33:318–328.
- Vrba, E. S. 1989. Levels of selection and sorting with special reference to the species level. *Oxford Surveys in Evolutionary Biology* 6:111–168.
- Vrba, E. S., and N. I. Eldredge. 1984. Individuals, hierarchies and processes: towards a more complete evolutionary theory. *Paleobiology* 10:146–172.
- Vrba, E. S., and S. J. Gould. 1986. The hierarchical expansion of sorting and selection: sorting and selection cannot be equated. *Paleobiology* 12:217–228.
- Wang, X., R. J. H. Tedford, B. Van Valkenburgh, and R. K. Wayne. 2004. Ancestry, evolutionary history, molecular systematics, and evolutionary ecology of Canidae. Pp. 37–52 in D. W. Macdonald and C. Sillero-Zubiri, eds. *The biology and conservation of wild canids*. Oxford University Press, Oxford.