

Methods: A PRISMA compliant literature search was conducted in PubMed (MEDLINE), PsychINFO, EMBASE, and Scopus databases prior to May of 2019. The initial database query yielded 4388 unique articles, which were narrowed down based on specified inclusion criteria (e.g., clear TBI definition, clinician-diagnosed PTSD, statistically analyzed relationship between neuroimaging and PTSD, quantified time interval between TBI and neuroimaging).

Results: A final cohort of 10 articles met inclusion criteria, comprising the findings of 482 participants with TBI. Key neuroanatomical findings among the included articles suggest that PTSD is associated with significant changes in whole-brain networks of resting state connectivity and disruptions in bilateral frontal and temporal white matter tracts, fronto-limbic pathways, the internal capsule, and the uncinate fasciculus (Figure 1).

Figure 1a: Neuroimaging Findings in TBI-related PTSD.

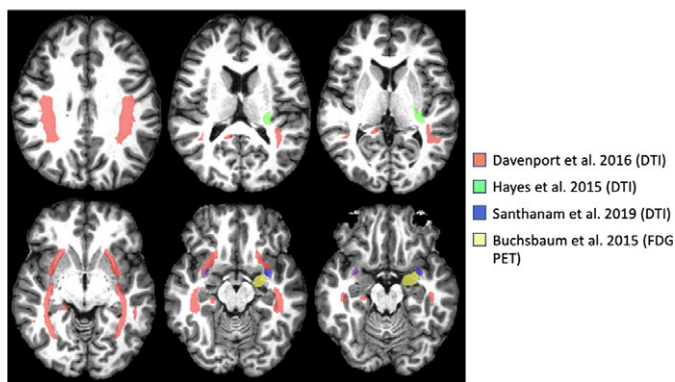
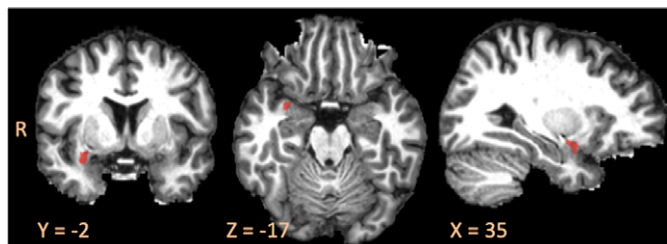


Figure 1b. Replicated Neuroimaging Findings in TBI-related PTSD in the Right Uncinate Fasciculus.



Conclusions: Additional inquiry with attention to specified imaging timing post-injury, consistent TBI definitions, clinician-diagnosed TBI and PTSD, and control groups is crucial to extrapolating discrepancies between primary and TBI-related PTSD. Prospective studies could further differentiate predisposing factors from sequelae of TBI-related PTSD.

Disclosure: No significant relationships.

Keywords: Neuroimaging; Post-traumatic stress disorder; traumatic brain injury

Consultation Liaison Psychiatry and Psychosomatics

EPV0312

An explorative study to assess the psychosocial impact of infertility on female Infertile Patients

B. Ghosh Dastidar

Royal Wolverhampton NHS Trust, University of Birmingham, Psychiatry, WVQP, United Kingdom
doi: 10.1192/j.eurpsy.2022.1199

Introduction: The primary aim of our study was to assess the psychosocial impact of infertility amongst female infertile patients. We selected infertile women visiting the gynaecological OPD of R.G.Kar Medical College and Hospital - one of the busiest and most reputed government hospitals in eastern India. Most of the research on psychological aspects on infertility has been done in the developed rich nations of the world, our study is one of the very few to have been conducted in a developing nation like India.

Objectives: Incidence of depression, psychopathology and anxiety in female infertile patients in comparison to control fertile group. Impairment in quality of life Impact of other variable factors

Methods: Source of data : RGK Medical College, Kolkata, India
Sampling technique : Consecutive Random Sampling
Tools for data collection: Beck's Depression Inventory, Beck's Anxiety Inventory, SF36, SCL 90, Mini International Neuropsychiatric Interview, Self Reporting Questionnaire, Socio Demographic Proforma.

Data Analysis: The data was collected and analyzed by means of descriptive and inferential statistics.

Inferential statistics- Data analyzed by using SPSS. The relationship between continuous and binary explanatory variables with SF36, SCL 90, BDI and BAI scores were assessed using unpaired t test.

Results: Statistical analysis by independent t test shows significant increased levels of depression, anxiety, significant difference in psychopathology and quality of life in the 2 study groups.

Conclusions: Infertility has a significant impact on psychosocial well being of infertile patients, Greater collaboration is required between psychiatrists, psychologists and infertility specialists to assist infertile couples.

Disclosure: No significant relationships.

Keywords: Psychopathology; Depression; Anxiety; Infertility

EPV0313

Building bridges between body and mind: liaison psychiatry

S. Bravo Herrero^{1*}, I. Moreno Alonso², M.J. Sánchez Artero¹ and A.M. Matas Ochoa¹

¹Hospital Universitario Infanta Leonor, Liaison Psychiatry, Madrid, Spain and ²Hospital Universitario Infanta Leonor, Home Treatment Team, Madrid, Spain

*Corresponding author.

doi: 10.1192/j.eurpsy.2022.1200

Introduction: As liaison psychiatrists, it is very important to maintain a good relationship with other medical specialties in order