



Convective, absolute and global azimuthal magnetorotational instabilities

A. Mishra^{1,†}, G. Mamatsashvili^{1,2,3}, V. Galindo¹ and F. Stefani¹

¹Helmholtz-Zentrum Dresden-Rossendorf, Bautzner Landstraße 400, D-01328 Dresden, Germany

²Abastumani Astrophysical Observatory, Abastumani 0301, Georgia

³Institute of Geophysics, Tbilisi State University, Tbilisi 0193, Georgia

(Received 30 January 2021; revised 16 April 2021; accepted 14 June 2021)

We study the convective and absolute forms of azimuthal magnetorotational instability (AMRI) in a cylindrical Taylor–Couette (TC) flow with an imposed azimuthal magnetic field. We show that the domain of the convective AMRI is wider than that of the absolute AMRI. Actually, it is the absolute instability which is the most relevant and important for magnetic TC flow experiments. The absolute AMRI, unlike the convective one, stays in the device, displaying a sustained growth that can be experimentally detected. We also study the global AMRI in a TC flow of finite height using direct numerical simulation and find that its emerging butterfly-type structure – a spatio-temporal variation in the form of axially upward and downward travelling waves – is in a very good agreement with the linear analysis, which indicates the presence of two dominant absolute AMRI modes in the flow giving rise to this global butterfly pattern.

Key words: absolute/convective instability, Taylor–Couette flow

1. Introduction

Many processes of geophysical and astrophysical interest entail the interaction of magnetic fields with conducting fluids or plasma. The dynamo effect is responsible for the self-excitation of magnetic fields in planets, stars and galaxies (Rincon 2019). A key player in cosmic structure formation is the magnetorotational instability (MRI, Balbus & Hawley 1998), which triggers outward transport of angular momentum in accretion disks and mass concentration onto central objects. While dynamo action and MRI are usually considered as separate effects, they are treated as nonlinearly interwoven and mutually reinforcing processes in the modern concept of *MRI dynamos* (Rincon 2019; Mamatsashvili *et al.* 2020).

† Email address for correspondence: a.mishra@hzdr.de

Over the last two decades, a great deal of theoretical and numerical work on dynamo action and MRI has been complemented by a number of pertinent experiments (Stefani, Gailitis & Gerbeth 2008). The threshold of self-excitation was achieved in the liquid sodium experiments in Riga (Gailitis *et al.* 2018), Karlsruhe (Müller *et al.* 2008) and Cadarache (Monchaux *et al.* 2009). The helical (Stefani *et al.* 2006) and azimuthal (Seilmayer *et al.* 2014) variants of MRI were observed in the medium-size PROMISE experiment, while an unequivocal proof of the standard MRI (with an imposed purely axial magnetic field) is still missing, despite great efforts and promising initial results (Sisan *et al.* 2004; Nornberg *et al.* 2010).

Interestingly, these experimental efforts brought to the fore the distinction between convective, absolute and global instabilities, which are well known in the hydrodynamics and plasma physics communities (e.g. Huerre & Monkewitz 1990; Chomaz 2005) but are seldom addressed in geophysical and astrophysical magnetohydrodynamics (MHD) (however, see Tobias, Proctor & Knobloch (1997) for a possible application to the solar dynamo). It was key for the success of the Riga experiment to transform the convective instability of the paradigmatic Ponomarenko (1973) dynamo (a conducting rigid rod, moving in a screw-like manner through an infinitely extended medium with the same conductivity) into an absolute (and a global) one by adding a concentric outer return flow to the inner motion of the rod. The corresponding one-dimensional (1D) eigenvalue problem in the radial direction and the search for saddle points in the complex wavenumber plane, representing the absolute instability, are described in Gailitis (1996). In this case, the absolute instability for the finite-length system coincided quite accurately with the global instability that was later obtained with a two-dimensional code (Stefani, Gerbeth & Gailitis 1999). A similar distinction between convective, absolute and global instabilities was discussed for the helical MRI (HMRI) experiment PROMISE (Priede & Gerbeth 2009; Stefani *et al.* 2009). In contrast to the Riga dynamo, where this distinction obviously stems from the axial flow through the device, the axial propagation of the unstable HMRI mode is tied to the direction of the background Poynting flux (Liu *et al.* 2006).

This paper is concerned with a related MRI problem for which the relevance of distinguishing among convective, absolute and global instabilities is far less evident. The azimuthal MRI (AMRI, Hollerbach, Teeluck & Rüdiger 2010) is a non-axisymmetric instability, with dominant azimuthal wavenumbers $m = \pm 1$, arising in a (hydrodynamically stable) differentially rotating flow in the presence of a purely azimuthal magnetic field. While any weak additional axial field would naturally result in a preferred direction and preponderance of either the $m = 1$ or $m = -1$ mode, with no axial field these two modes have the same weight and it might be naively expected that they add up to a standing wave. Under this assumption, the two interpenetrating upward and downward travelling waves, as observed experimentally in Seilmayer *et al.* (2014), were interpreted in terms of the breaking of the axial homogeneity by the endcaps of the cylindrical Taylor–Couette (TC) device of PROMISE. However, we will show in this paper that the tendency of AMRI waves to travel away from the mid-height of the cylinders, exhibiting a butterfly-like spatio-temporal variation (analogous to the famous ‘butterfly diagram’ in solar physics), has a deeper rooting, as it occurs already in a TC flow that is infinitely extended in the axial direction.

2. Mathematical formulation

The set-up is that of an infinitely long TC flow of a conducting fluid in cylindrical coordinates (r, ϕ, z) with an imposed purely azimuthal magnetic field, which is usually

adopted in AMRI studies. The inner and outer cylinders, with radii r_i and r_o , respectively, rotate with angular velocities Ω_i and Ω_o around the z -axis, driving in the gap between them an azimuthal velocity, $\mathbf{u}_0 = r\Omega(r)\mathbf{e}_\phi$, with the radial profile of the angular velocity $\Omega(r) = C_1 + C_2/r^2$, where $C_1 = (r_o^2\Omega_o - r_i^2\Omega_i)/(r_o^2 - r_i^2)$ and $C_2 = (\Omega_i - \Omega_o)r_i^2r_o^2/(r_o^2 - r_i^2)$. The ratio of the inner to the outer radius is $r_i/r_o = 0.5$, as in PROMISE. The fluid has constant viscosity ν and magnetic diffusivity η characterized by Reynolds, $Re = \Omega_i r_i^2/\nu$, and magnetic Reynolds, $Rm = \Omega_i r_i^2/\eta$, numbers. The magnetic Prandtl number $Pm = Rm/Re = 1.4 \times 10^{-6}$ is that of GaInSn used in PROMISE (Stefani *et al.* 2009). In the latter experiment, the imposed azimuthal magnetic field is current-free, $\mathbf{B}_0 = B_0(r_i/r)\mathbf{e}_\phi$, where B_0 is constant; here we adopt the same configuration of the field as well. The effect of the field is quantified by the Hartmann number $Ha = B_0 r_i / \sqrt{\rho \mu \nu \eta}$, where ρ is the constant density and μ is the magnetic permeability. We focus on the Rayleigh stable regime, $\Omega_o/\Omega_i > (r_i/r_o)^2 = 0.25$, with the fixed ratio of the cylinders' rotation rates $\Omega_o/\Omega_i = 0.26$, so that only magnetic instabilities can develop in the flow.

About the above equilibrium TC flow, we consider small perturbations of velocity, \mathbf{u} , total (thermal plus magnetic) pressure, p , and magnetic field, \mathbf{b} , which are all functions of the radius r and depend on time t , azimuthal ϕ and axial z coordinates as a normal mode $\propto \exp(\gamma t + im\phi + ik_z z)$, where γ is the (complex) eigenvalue, while k_z and the integer m are the axial and azimuthal wavenumbers, respectively. The flow is unstable if the real part (growth rate) of any eigenvalue is positive, i.e. $\text{Re}(\gamma) > 0$. Henceforth, we normalize length by r_i , time by Ω_i^{-1} , γ and $\Omega(r)$ by Ω_i , \mathbf{u} by $\Omega_i r_i$, p by $\rho r_i^2 \Omega_i^2$, \mathbf{B}_0 by B_0 and \mathbf{b} by $Rm \cdot B_0$. Substituting these non-dimensional quantities in the basic non-ideal MHD equations and linearizing them, we get the perturbation equations in non-dimensional form as well (e.g. Kirillov, Stefani & Fukumoto 2014; Rüdiger *et al.* 2018):

$$(\gamma + im\Omega)\mathbf{u} + 2\Omega\mathbf{e}_z \times \mathbf{u} + r\Omega' u_r \mathbf{e}_\phi = -\nabla p + \frac{Ha^2}{Re} \frac{im}{r^2} \mathbf{b} - \frac{Ha^2}{Re} \frac{2}{r^2} b_\phi \mathbf{e}_r + \frac{1}{Re} \nabla^2 \mathbf{u}, \tag{2.1}$$

$$Rm(\gamma + im\Omega)\mathbf{b} = \frac{im}{r^2} \mathbf{u} + Rm \cdot r\Omega' b_r \mathbf{e}_\phi + \frac{2}{r^2} u_r \mathbf{e}_\phi + \nabla^2 \mathbf{b}, \tag{2.2}$$

$$\nabla \cdot \mathbf{u} = 0, \quad \nabla \cdot \mathbf{b} = 0, \tag{2.3a,b}$$

where $\Omega' = d\Omega/dr$. Equations (2.1)–(2.3a,b), together with the adopted no-slip condition for the velocity and perfect-conductor condition for the magnetic field at the cylinder surfaces, constitute the eigenvalue problem describing AMRI in the magnetized TC flow (Hollerbach *et al.* 2010). Solving this problem yields the corresponding dispersion relation $\gamma(m, k_z)$ and the radial structure of the AMRI modes. Since AMRI is dominated by non-axisymmetric $m = \pm 1$ modes (Hollerbach *et al.* 2010; Rüdiger *et al.* 2018), we focus on these modes in this paper.

Until now, AMRI has been extensively investigated, both with global 1D and local Wentzel–Kramers–Brillouin (WKB) approaches, but only as a convective instability (e.g. Hollerbach *et al.* 2010; Kirillov *et al.* 2014; Rüdiger *et al.* 2018). These studies formed the basis for understanding the first experimental manifestations of AMRI (Seilmayer *et al.* 2014). As mentioned above, however, these experiments revealed a notable feature of the propagation of AMRI modes – the butterfly diagram – which is not captured by the conventional treatment of AMRI as a convective instability. Our main goal is therefore to show, using the concept of absolute instability, that this butterfly-like propagation is in fact rooted in the dynamics of AMRI itself rather than being induced by the top and bottom boundaries (endcaps) of the TC device.

3. Convective and absolute instabilities – a short overview

In flow systems, one can distinguish two types of instabilities – convective and absolute (Huerre & Monkewitz 1990; Chomaz 2005). An instability is *convective* if the perturbation during growth also propagates in the flow as a travelling wave packet, so that it decays at large times with respect to a fixed point in any reference frame, but continues to grow in the frame co-moving with the group velocity of this packet. By contrast, an instability is *absolute* when the perturbation grows without limit at every point in the flow. In laboratory experiments, it is usually the absolute instability which is more relevant, and hence of greater interest, than the convective instability. An experimental device containing the flow, to which the laboratory frame is attached, has finite size. As a result, the convective instability may be rapidly carried out of the system before attaining the growth sufficient for detection, whereas the absolute instability always stays within the system, exhibiting sustained growth detectable in experiments.

The convective instability is determined by a standard procedure of linear modal stability analysis, that is, by considering the dispersion relation at real wavenumbers k and finding the real (growth rate) and imaginary (frequency) parts of γ (e.g. Rüdiger *et al.* 2018). In general, this yields some non-zero group velocity for the unstable modes. Determining the absolute instability is more delicate, as it requires finding such a combination of convectively unstable modes, which forms growing perturbations (wave packets) with zero group velocity in the laboratory frame, and hence remains in the flow. This is achieved mathematically by considering complex wavenumbers k (k is the wavenumber in the propagation direction of convective instability, which is along the z -axis in the present case), analytically extending the dispersion relation $\gamma(k)$ from the real k -axis to the complex k -plane and finding its saddle points k_s (Gailitis & Freibergs 1980; Huerre & Monkewitz 1990; Chomaz 2005), where the complex derivative satisfies

$$\left. \frac{\partial \gamma(k)}{\partial k} \right|_{k=k_s} = 0, \quad k_s \in \mathbb{C}. \quad (3.1)$$

If the real part of the complex γ at $k = k_s$ is positive, $\text{Re}(\gamma(k_s)) > 0$, this indicates the presence of the absolute instability, where $\text{Re}(\gamma(k_s))$ is its growth rate and $\omega = \text{Im}(\gamma(k_s))$ its frequency. The real part $\text{Re}(k_s)$ and imaginary part $\text{Im}(k_s)$ of k_s describe, respectively, its oscillations and exponential increase/decrease in space. The condition (3.1) implies that the real group velocity of the absolute instability is zero at k_s , i.e. $\partial \omega / \partial \text{Re}(k)|_{k=k_s} = 0$, although it can still have a non-zero phase velocity.

4. Convective and absolute types of AMRI

The AMRI is essentially the instability of inertial waves (Kirillov *et al.* 2014), and therefore it was natural in previous studies to regard it as a convective instability and apply a standard technique of modal linear stability analysis, where the axial wavenumber k_z is real. In this paper, we instead address AMRI within the absolute instability framework, which has not been considered before, and apply the methods described above, where the wavenumber k_z in the axial z -direction, along which AMRI waves travel, is now complex.

4.1. WKB analysis

To obtain an initial insight into the absolute AMRI, we start with the local short-wavelength WKB analysis, in which the radial dependence of the perturbations is of the form $\exp(ik_r r)$, with a large (real) radial wavenumber $k_r r_i \gtrsim 1$. Substituting this in

(2.1)–(2.3a,b) and using the inductionless limit $Pm \rightarrow 0$, we get an analytical dispersion relation (Kirillov *et al.* 2014):

$$\gamma = -im - \frac{k^2}{Re} - (m^2 + 2\alpha^2) \frac{Ha^2}{k^2 Re} + 2 \left[\frac{\alpha^2 Ha^2}{k^2 Re^2} \left((\alpha^2 + m^2) \frac{Ha^2}{k^2} + im(Ro + 2) \right) - (Ro + 1)\alpha^2 \right]^{1/2}, \quad (4.1)$$

where $\alpha = k_z/k$, $k^2 = k_r^2 + k_z^2$ and $Ro = r(2\Omega)^{-1} d\Omega/dr$ is the Rossby number. Using the conversion formula of Stefani & Kirillov (2015) for $\Omega_o/\Omega_i = 0.26$ in the TC flow, we obtain $Ro = -0.97$ in the local case, which is below the lower Liu limit, $Ro_{LLL} = -0.83$, ensuring the presence of AMRI (Kirillov *et al.* 2014). Typically, AMRI modes extend over the gap width between the cylinders (see below), so for the effective radial wavenumber we take $k_r = \pi/(r_o - r_i)$ (Ji, Goodman & Kageyama 2001), though this choice is still somewhat arbitrary.

Figure 1 shows the solution of the dispersion relation (4.1) for complex k_z at $Re = 1480$, $m = 1$ and different Ha . (The $m = -1$ case is similar except that the two growth areas swap their $\text{Im}(k_z)$ values in the k_z -plane, so we do not show it here; see § 4.2.) At smaller Ha , there are two separate areas of positive $\text{Re}(\gamma) \geq 0$; however, as yet, neither crosses the $\text{Re}(k_z)$ -axis (red dashed lines in figure 1), implying that there is no genuine instability in the flow. With increasing Ha , the lower area first crosses the $\text{Re}(k_z)$ -axis, indicating the onset of the convective AMRI, and then extends into the upper half of the k_z -plane, which is shown at $Ha = 20$ in figure 1(a). At $Ha = 27.407$, the boundaries ($\text{Re}(\gamma) = 0$) of these two areas touch each other, forming a saddle point $k_{z,s}$ according to condition (3.1), which is seen as a cusp in figure 1(b). This saddle point, still being marginally stable ($\text{Re}(\gamma(k_{z,s})) = 0$), represents the emerging absolute AMRI. It further develops by increasing its growth rate and spreading towards the lower half of the k_z -plane, as the two areas merge more with increasing Ha . For example, at $Ha = 110$ in figure 1(c), the saddle point associated with the absolute AMRI mode is at $k_{z,s} = (5.08, -1.39)$ (red cross). It has the growth rate $\text{Re}(\gamma(k_{z,s})) = 0.07$ and frequency $\text{Im}(\gamma(k_{z,s})) = -0.5$. At higher Ha , the saddle point and hence the absolute AMRI disappear, but the convective instability along the $\text{Re}(k_z)$ -axis may still remain, as shown in figure 1(d). Eventually, the convective AMRI also vanishes after some maximum Ha is exceeded, as the growth areas move away from the $\text{Re}(k_z)$ -axis; see figure 1(e).

The marginal stability ($\text{Re}(\gamma) = 0$) curves for convective (optimized over $\text{Re}(k_z)$) and absolute AMRI are shown in figure 1(f), with the latter being located inside the former. This implies that the critical Ha and Re for the excitation of the convective AMRI are typically lower than those for the absolute AMRI. This can be graphically understood from figures 1(a)–1(e). One of the two growth areas, approaching from the upper or lower half of the k_z -plane, first overlaps the $\text{Re}(k_z)$ -axis at certain Ha for a given Re , which lies on the black dashed curve in figure 1(f), indicating the onset of the convective AMRI. These two growth areas then touch each other at some larger Ha that lies on the red curve in figure 1(f), indicating the onset of the absolute AMRI. If the saddle point lies on the $\text{Re}(k_z)$ -axis, then the marginal stability curves for convective and absolute AMRI coincide.

4.2. 1D analysis

Now we present the solution of the 1D linear eigenvalue problem in the k_z -plane. The eigenvalues γ and the radial structure of the associated eigenmodes are found using a

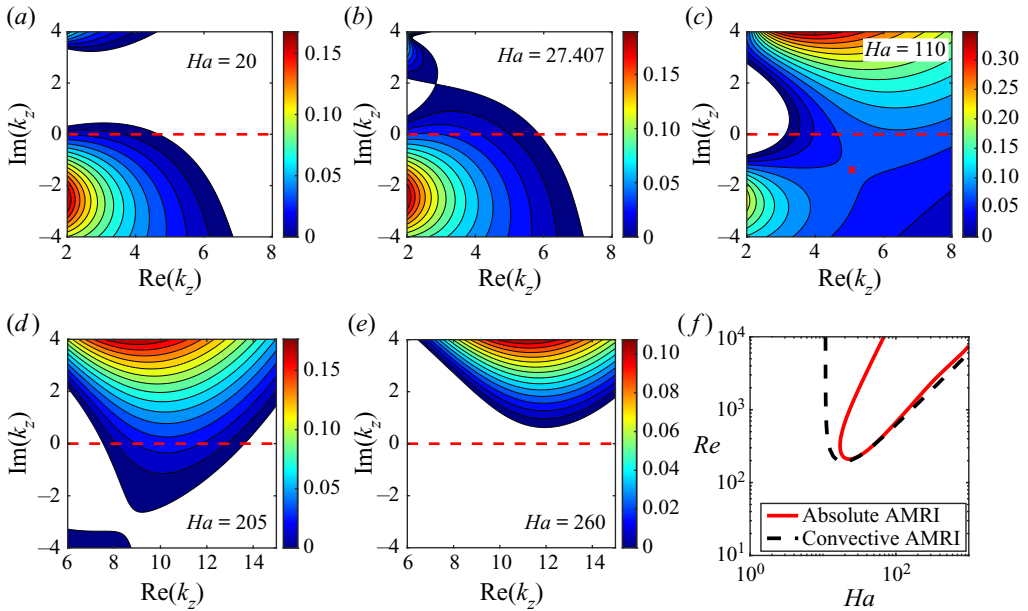


Figure 1. (a–e) The areas of growth, $\text{Re}(\gamma) > 0$, in the k_z -plane, obtained from the WKB dispersion relation (4.1) for fixed $Re = 1480$, $m = 1$, $Ro = -0.97$ and different Ha . The red cross in (c) denotes the saddle point at $k_{z,s} = (5.08, -1.39)$ – the wavenumber of the absolute AMRI mode with the growth rate $\text{Re}(\gamma(k_{z,s})) = 0.07$. (f) The marginal stability curves for the convective (black dashed line) and absolute (red solid line) AMRI in the (Ha, Re) -plane.

spectral collocation method based on Chebyshev polynomials (up to $N = 30\text{--}40$), whereby (2.1)–(2.3a,b), supplemented with the boundary conditions as described in § 2, are reduced to a large $(4N \times 4N)$ matrix eigenvalue problem (see code details in Hollerbach *et al.* 2010).

Figures 2(a)–2(e) show the resulting growth areas in the k_z -plane at the same $Re = 1480$, $m = 1$ and different Ha ; they behave similarly to the WKB case above. Initially, for lower Ha , there is no AMRI, since both areas are distant from the $\text{Re}(k_z)$ -axis (red dashed line); see figure 2(a). When Ha is increased to a critical value of 81.6, the convective AMRI sets in as the upper area crosses the $\text{Re}(k_z)$ -axis (figure 2b). This crossing point has a cusp-like shape and thus appears to be the saddle point at the same time, implying that the convective and absolute AMRI are nearly equivalent at the onset. The growth rate of the absolute AMRI further increases with Ha , as these areas merge. For example, at $Ha = 90$ in figure 2(c), the saddle point, corresponding to the absolute AMRI mode, is at $k_{z,s} = (3.24, -0.2)$ (red cross) with the growth rate $\text{Re}(\gamma(k_{z,s})) = 1.9 \times 10^{-3}$ and frequency $\text{Im}(\gamma(k_{z,s})) = -0.25$. When Ha is further increased, first the absolute AMRI (figure 2d) and then the convective AMRI (figure 2e) vanish.

In figure 2(f), we also plot the marginal stability curves for the convective and absolute AMRI, with the latter being located inside the former, as in the WKB case, but in the 1D analysis, both are excited at almost identical critical Ha and Re . Furthermore, comparing figures 1 and 2 shows that the distributions of the growth areas in the k_z -plane in the WKB and 1D analyses are qualitatively similar. However, the uncertainty in matching the constant Ro in the WKB case and the radially varying Ro in the 1D case for a moderate gap width $(r_0 - r_i)/r_i \sim 1$ (Stefani & Kirillov 2015), as well as some ambiguity in choosing

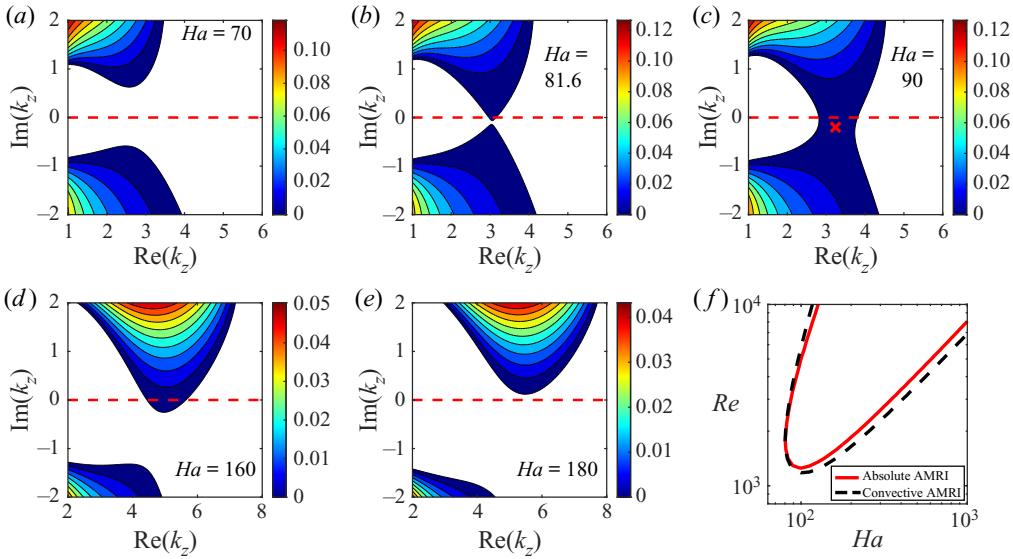


Figure 2. Same as figure 1, but for the 1D stability analysis at the same $Re = 1480$ and $m = 1$. Now the saddle point (red cross) in (c), representing the absolute AMRI, is at $k_{z,s} = (3.24, -0.2)$, with the growth rate $Re(\gamma(k_{z,s})) = 1.9 \times 10^{-3}$.

the effective k_r in the WKB analysis, makes quantitative differences between the two results unavoidable.

Figures 3(a,b) show areas with $Re(\gamma) \geq 0$ in the k_z -plane at $Ha = 110$ for which the absolute AMRI reaches maximum growth for a given $Re = 1480$. Since the TC flow with a purely azimuthal field is invariant to reversing the sign of z , the saddle points $k_{z,s}$ and hence the absolute AMRI at $m = \pm 1$ occur symmetrically with respect to the $Re(k_z)$ -axis: their $Re(k_{z,s}) = 3.67$ and growth rate $Re(\gamma(k_{z,s})) = 0.00356$ are the same, while $Im(k_{z,s}) = \mp 0.42$ and frequency $Im(\gamma(k_{z,s})) = \mp 0.2375$ differ only in sign. This implies that although the absolute AMRI modes have zero group velocity, they have non-zero phase velocities along and opposite the z -axis, respectively, for $m = -1$ and $m = 1$. In figure 3(c), we also plot $Re(\gamma)$ for the convective (optimized over $Re(k_z)$) and absolute AMRI. It is seen that the convective AMRI has a larger growth rate and occurs for a wider range of Ha than the absolute AMRI. As noted above, however, the convective and absolute AMRI are nearly identical at the onset for these parameters.

It is now interesting to look at the spatial structure of the absolute and convective AMRI modes. Figure 4 shows the normalized eigenfunctions for the axial velocity u_z in (r, z) -slices belonging to the absolute and convective AMRI at $m = \pm 1$, $Ha = 110$ and $Re = 1480$. It is evident that the eigenfunctions for these two types of AMRI are characteristically similar, except that due to the complex wavenumber $k_{z,s}$ of the absolute AMRI, its eigenfunctions increase (for $m = 1$) and decrease (for $m = -1$) along the z -axis. This property is important for the interpretation of the simulation results in § 5. By contrast, the wavenumber of the convective AMRI is real, and hence its eigenfunctions retain a periodic structure with spatially constant amplitude along the z -axis.

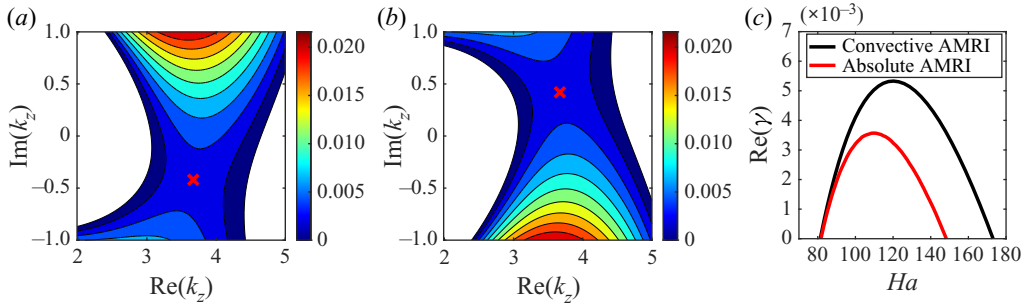


Figure 3. The growth areas with $\text{Re}(\gamma) > 0$ in the k_z -plane at $Ha = 110$ and $Re = 1480$ in the 1D case, separately for (a) the $m = 1$ mode and (b) the $m = -1$ mode. Because of the mirror symmetry of the flow, these areas flip with respect to the $\text{Re}(k_z)$ -axis when m changes sign; as a result, the saddle points (red crosses) for the absolute AMRI are symmetric around this axis: $k_{z,s} = (3.67, \mp 0.42)$ for $m = \pm 1$. The corresponding growth rate is $\text{Re}(\gamma(k_{z,s})) = 0.00356$, and the frequency is $\text{Im}(\gamma(k_{z,s})) = \mp 0.2375$ for $m = \pm 1$. (c) The growth rates of the convective (black) and absolute (red) AMRI versus Ha at the same Re .

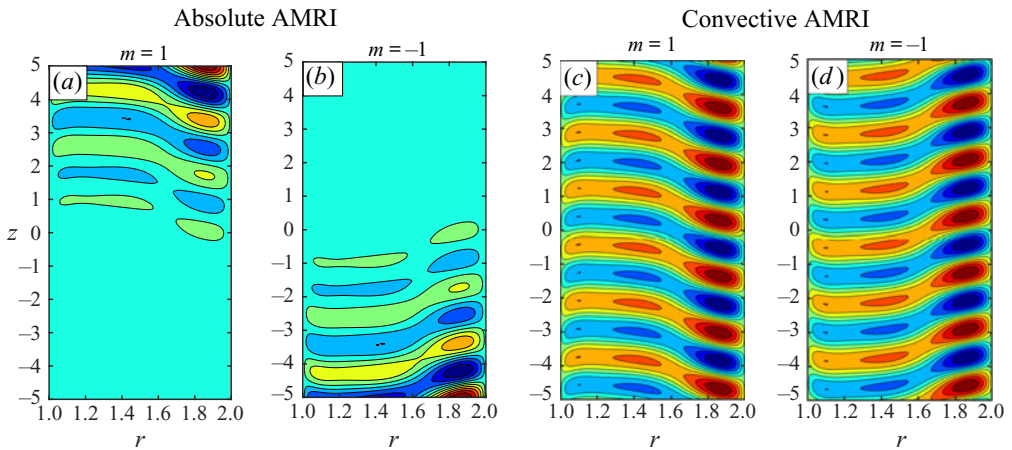


Figure 4. Normalized axial velocity u_z eigenfunctions in (r, z) -slices at $Ha = 110$, $Re = 1480$ pertaining to the absolute AMRI with (a) $m = 1$ and (b) $m = -1$ (represented by red crosses in figure 3) and to the convective AMRI with (c) $m = 1$ and (d) $m = -1$.

5. Simulations

We also conducted a direct numerical simulation (DNS) of AMRI in the same magnetized TC flow set-up and parameters as described in § 2, except that the cylinders now have a finite height $L = 10r_i$ as in PROMISE. We solved the basic equations of non-ideal MHD (in the same non-dimensional form) using the open-source code library OpenFOAM® (<https://www.openfoam.com/>), complemented by a Poisson solver for the determination of the induced electric potential. The code used here has already been validated in our previous works (Weber *et al.* 2013; Seilmayer *et al.* 2014). The initial conditions are the previous TC profile $\Omega(r) = C_1 + C_2/r^2$ with the azimuthal magnetic field $\mathbf{B}_0 = B_0(r_i/r)\mathbf{e}_\phi$. For the velocity we set $\mathbf{u} = r\Omega(r)\mathbf{e}_\phi$ (i.e. zero perturbation velocity) at the top and bottom of the cylinders and no-slip condition at the cylinder walls, while conducting boundary conditions are applied for the magnetic field, as in the 1D analysis above. Since the TC flow has a finite height and non-periodic boundary conditions along the z -axis,

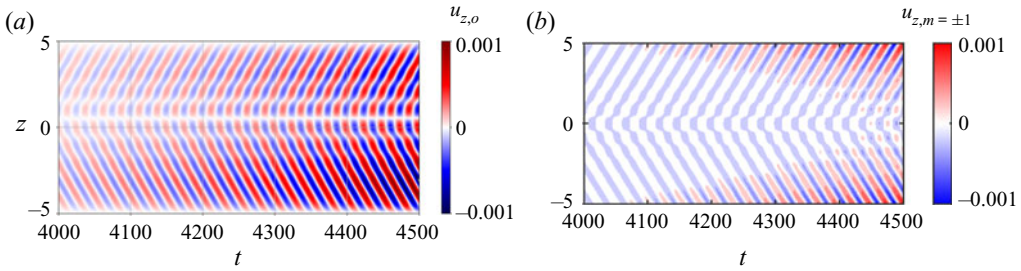


Figure 5. Spatio-temporal variation (butterfly diagram) of the axial velocity u_z in the (t, z) -slice at $Ha = 110$ and $Re = 1480$ (a) for odd azimuthal modes of the global AMRI in the DNS and (b) constructed from $m = \pm 1$ eigenfunctions of the absolute AMRI in the 1D linear analysis, which are shown in figure 4(a,b).

the AMRI developing in this case is in fact a global instability. For the same values of $Ha = 110$ and $Re = 1480$ as used in § 4.2, we analysed the odd- m azimuthal modes of this global AMRI and compared the results with those of the 1D linear analysis. We note that although DNS solves full nonlinear equations, it is still in the linear regime, since the emerging global AMRI increases exponentially in time and has not yet reached nonlinear saturation (see below).

In figure 5(a), we show the temporal evolution of the z -profile of the axial velocity $u_{z,o}(z, t)$ at a radius $r_0 = 1.75$ for odd azimuthal modes of the global AMRI obtained from the DNS. To remove all even- m modes from the flow, we take the difference of the full axial velocity $u_z(r, \phi, z, t)$ at $\phi = 0$ and $\phi = \pi$ for $r_0 = 1.75$, i.e. $u_{z,o}(z, t) = u_z(r_0, 0, z, t) - u_z(r_0, \pi, z, t)$. Since $m = \pm 1$ are the most dominant non-axisymmetric modes in the flow, it is appropriate to compare this velocity profile with that of the absolute AMRI obtained from the 1D linear analysis. In figure 5(b), we show the normalized axial velocity profile $u_z(z, t)$ for the absolute AMRI constructed from the linear superposition of its eigenfunctions at $m = \pm 1$ (figure 4a,b), taken with equal weights. Figure 5 shows a remarkable similarity in the butterfly patterns of the axial velocity resulting from the DNS and 1D analysis. Evidently, it also demonstrates that the $m = \pm 1$ modes dominate the global AMRI in the simulations (which we also checked by directly calculating the amplitudes of different modes in the azimuthal Fourier transform of the global solution), with the flow structure similar to that in the 1D analysis. Next, we obtain the frequency, growth rate and axial wavenumbers of this global AMRI structure.

In figure 6(a), we plot $u_{z,o}$ at $z_0 = -3$ as a function of time and make a fit with the expressions of the harmonic form $A \exp(\Gamma t) \cos(\omega(t - t_0))$, obtaining in this way for the growth rate Γ and frequency ω the values $\Gamma = 0.00337$ and $\omega = 0.252$. We also performed a Hilbert transform (figure 6b) to obtain envelopes of the velocity evolution and instantaneous frequency, which yields growth rate 0.0034 and frequency 0.251 for the global AMRI. Both of these results are in good agreement with the 1D linear stability analysis for the absolute AMRI, which yielded the growth rate 0.00356 and frequency 0.2375 (figure 3a,b).

We also performed proper orthogonal decomposition (POD) of $u_{z,o}(z, t)$ to compute the real and imaginary components of the axial wavenumbers k_z of the global AMRI mode structure in figure 5(a), using the model reduction library *modred* (Belson, Tu & Rowley 2014). The amplitude obtained for this dominant global mode as a function of z is plotted in figure 6(c). As the global AMRI flow actually consists of the two $m = \pm 1$ modes, each prominent on one side of the symmetry ($z = 0$)-plane, it is reasonable to make two

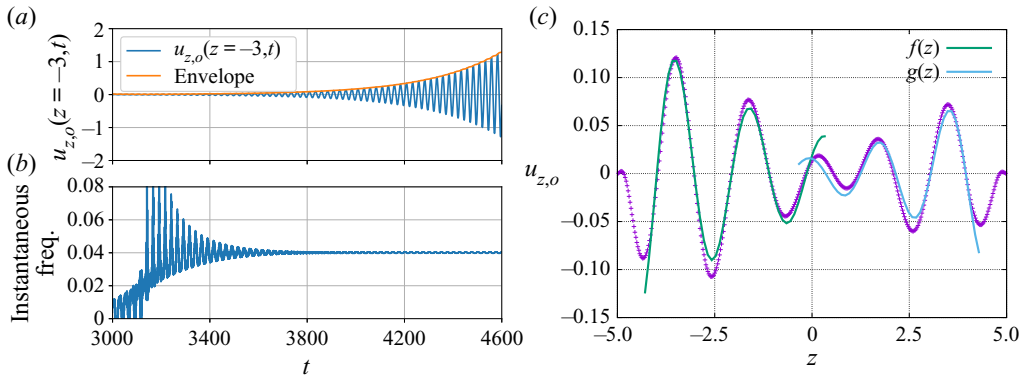


Figure 6. (a) Time evolution of $u_{z,o}(z_0, t)$ for the global AMRI at $z_0 = -3$ with (b) the corresponding Hilbert transform. (c) Fits to the axial structure of this dominant global mode (lilac) obtained using POD at $r_0 = 1.75$ with two functions $f(z)$ (green) and $g(z)$ (blue), which correspond to the absolute AMRI modes with $m = -1$ and $m = 1$, respectively (see text).

separate fits using the expressions $f(z) = A_1 \exp(-\text{Im}(k_{z,1})(z + 5)) \cos(\text{Re}(k_{z,1})(z - z_1))$ and $g(z) = A_2 \exp(-\text{Im}(k_{z,2})(z - 5)) \cos(\text{Re}(k_{z,2})(z - z_2))$ (also shown in figure 6(c)), each corresponding to one of the two absolute AMRI modes with $m = \pm 1$. Upon such a fitting, we obtain the values $k_{z,1} = (3.26, 0.29)$ and $k_{z,2} = (3.49, -0.392)$, which agree reasonably well with the results of our 1D analysis, $k_{z,s} = (3.67, \mp 0.42)$, from figure 3(a,b). However, it should be noted that the DNS was done for a finite-length TC flow, while in the linear stability analysis, the cylinder height was assumed to be infinite. Hence, the minor quantitative difference between the DNS and the 1D linear analysis results may be attributable to the assumption of infinite length of the cylinders in the latter approach.

6. Conclusion





By performing WKB and 1D linear stability analyses, we have shown that the absolute variant of AMRI corresponds to a saddle point in the complex axial wavenumber plane which, in physical space, appears as the characteristic solution exponentially increasing in the (negative or positive) axial direction. This is quite different from, and has more significance from the experimental point of view than, the often considered convective AMRI with a real axial wavenumber. The corresponding global instability for the finite-height TC flow (with non-periodic axial boundary conditions) was obtained by DNS, which was demonstrated to represent the superposition of two absolute AMRI modes with $m = \pm 1$ from the 1D stability analysis of infinitely long cylinders. In other words, the butterfly diagram exhibited by the global AMRI mode can be understood as being composed of the two dominant, absolute AMRI wave modes with zero group velocities but with corresponding phase velocities of propagation directed upwards and downwards. These results further refine the interpretation of the butterfly-type structure observed in the PROMISE experiment (Seilmayer *et al.* 2014; Seilmayer, Ogbonna & Stefani 2020), and will be essential for the design of the liquid sodium MRI experiments in the new DRESDYN project (Stefani *et al.* 2019). Finally, we note that understanding the dynamics of AMRI is also important for establishing its relevance for the ‘dead zones’ of accretion (protoplanetary) discs (Gammie 1996; Lesur, Kunz & Fromang 2014), which are cold,

dense, very weakly ionized and therefore magnetically less active inner regions of discs, where high resistivity, resulting in $Pm \ll 1$, leads to the suppression of standard MRI.

Funding. This project received funding from the European Union's Horizon 2020 research and innovation programme under the ERC Advanced Grant Agreement No. 787544 and from the Shota Rustaveli National Science Foundation of Georgia (SRNSFG, Grant No. FR17-107). We thank R. Hollerbach for kindly providing the linear 1D code used here and J. Ogbonna for carefully reading the manuscript. We also thank the anonymous reviewers for constructive reports that improved the presentation of this work.

Declaration of interests. The authors report no conflict of interest.

Author ORCIDs.

-  A. Mishra <https://orcid.org/0000-0001-7668-9885>;
-  G. Mamatsashvili <https://orcid.org/0000-0002-6189-850X>;
-  V. Galindo <https://orcid.org/0000-0002-7489-863X>;
-  F. Stefani <https://orcid.org/0000-0002-8770-4080>.

REFERENCES

- BALBUS, S. & HAWLEY, J. 1998 Instability, turbulence, and enhanced transport in accretion disks. *Rev. Mod. Phys.* **70**, 1–53.
- BELSON, B.A., TU, J.H. & ROWLEY, C.W. 2014 Algorithm 945: modred—a parallelized model reduction library. *ACM Trans. Math. Softw.* **40**, 30.
- CHOMAZ, J.-M. 2005 Global instabilities in spatially developing flows: non-normality and nonlinearity. *Annu. Rev. Fluid Mech.* **37**, 357–392.
- GAILITIS, A. 1996 Design of a liquid sodium MHD dynamo experiment. *Magnetohydrodynamics* **32**, 58–62.
- GAILITIS, A. & FREIBERGS, Y. 1980 Nature of the instability of a turbulent dynamo. *Magnetohydrodynamics* **16**, 116–121.
- GAILITIS, A., GERBETH, G., GUNDRUM, TH., LIELAUSIS, O., LIPSBERGS, G., PLATACIS, E. & STEFANI, F. 2018 Self-excitation in a helical liquid metal flow: the Riga dynamo experiments. *J. Plasma. Phys.* **84**, 735840301.
- GAMMIE, C.F. 1996 Layered accretion in T Tauri disks. *Astrophys. J.* **457**, 355–362.
- HOLLERBACH, R., TEELUCK, V. & RÜDIGER, G. 2010 Nonaxisymmetric magnetorotational instabilities in cylindrical Taylor–Couette flow. *Phys. Rev. Lett.* **104**, 044502.
- HUERRE, P. & MONKEWITZ, P.A. 1990 Local and global instabilities in spatially developing flows. *Ann. Rev. Fluid Mech.* **22**, 473–537.
- JI, H., GOODMAN, J. & KAGEYAMA, A. 2001 Magnetorotational instability in a rotating liquid metal annulus. *Mon. Not. R. Astron. Soc.* **325**, L1–L5.
- KIRILLOV, O.N., STEFANI, F. & FUKUMOTO, Y. 2014 Local instabilities in magnetized rotational flows: a short-wavelength approach. *J. Fluid Mech.* **760**, 591–633.
- LESUR, G., KUNZ, M. & FROMANG, S. 2014 Thanatology in protoplanetary discs. The combined influence of Ohmic, Hall, and ambipolar diffusion on dead zones. *Astron. Astrophys.* **566**, A56.
- LIU, W., GOODMAN, J., HERRON, I. & JI, H. 2006 Helical magnetorotational instability in magnetized Taylor–Couette flow. *Phys. Rev. E* **74**, 056302.
- MAMATSASHVILI, G., CHAGELISHVILI, G., PESSAH, M.E., STEFANI, F. & BODO, G. 2020 Zero net flux MRI turbulence in disks: sustenance scheme and magnetic Prandtl number dependence. *Astrophys. J.* **904**, 47.
- MONCHAUX, R., *et al.* 2009 The von Kármán sodium experiment: turbulent dynamical dynamos. *Phys. Fluids* **21**, 035108.
- MÜLLER, U., STIEGLITZ, R., BUSSE, F.H. & TILGNER, A. 2008 The Karlsruhe two-scale dynamo experiment. *C. R. Phys.* **9**, 729–740.
- NORNBERG, M.D., JI, H., SCHARTMAN, E., ROACH, A. & GOODMAN, J. 2010 Observation of magnetocoriolis waves in a liquid metal Taylor–Couette experiment. *Phys. Rev. Lett.* **104**, 074501.
- PONOMARENKO, YU.B. 1973 On the theory of hydromagnetic dynamo. *J. Appl. Mech. Tech. Phys.* **14**, 775–779.
- PRIEDE, J. & GERBETH, G. 2009 Absolute versus convective helical magnetorotational instability in a Taylor–Couette flow. *Phys. Rev. E* **79**, 046310.
- RINCON, F. 2019 Dynamo theories. *J. Plasma Phys.* **85**, 205850401.

- RÜDIGER, G., GELLERT, M., HOLLERBACH, R., SCHULTZ, M. & STEFANI, F. 2018 Stability and instability of hydromagnetic Taylor–Couette flows. *Phys. Rep.* **741**, 1–89.
- SEILMAYER, M., GALINDO, V., GERBETH, G., GUNDRUM, TH., STEFANI, F., GELLERT, M., RÜDIGER, G., SCHULTZ, M. & HOLLERBACH, R. 2014 Experimental evidence for nonaxisymmetric magnetorotational instability in a rotating liquid metal exposed to an azimuthal magnetic field. *Phys. Rev. Lett.* **113**, 024505.
- SEILMAYER, M., OGBONNA, J. & STEFANI, F. 2020 Convection-caused symmetry breaking of azimuthal magnetorotational instability in a liquid metal Taylor–Couette flow. *Magnetohydrodynamics* **56**, 225.
- SISAN, D., MUJICA, N., TILLOTSON, W., HUANG, Y., DORLAND, W., HASSAM, A., ANTONSEN, T. & LATHROP, D.P. 2004 Experimental observation and characterization of the magnetorotational instability. *Phys. Rev. Lett.* **93**, 114502.
- STEFANI, F., GAILITIS, A. & GERBETH, G. 2008 Magnetohydrodynamic experiments on cosmic magnetic fields. *Z. Angew. Math. Mech.* **88**, 930–954.
- STEFANI, F., GAILITIS, A., GERBETH, G., GIESECKE, A., GUNDRUM, TH., RÜDIGER, G., SEILMAYER, M. & VOGT, T. 2019 The DRESDYN project: liquid metal experiments on dynamo action and magnetorotational instability. *Geophys. Astrophys. Fluid Dyn.* **113**, 51–70.
- STEFANI, F., GERBETH, G. & GAILITIS, A. 1999 Velocity profile optimization for the riga dynamo experiment. In *Transfer Phenomena in Magnetohydrodynamics and Electroconducting Flows* (ed. A. Alemany, P. Marty & J.P. Thibault), Fluid Mechanics and its Applications, vol. 51, pp. 31–44. Kluwer Academic Publishers.
- STEFANI, F., GERBETH, G., GUNDRUM, TH., HOLLERBACH, R., PRIEDE, J., RÜDIGER, G. & SZKLARSKI, J. 2009 Helical magnetorotational instability in a Taylor–Couette flow with strongly reduced Ekman pumping. *Phys. Rev. E* **80**, 066303.
- STEFANI, F., GUNDRUM, TH., GERBETH, G., RÜDIGER, G., SCHULTZ, M., SZKLARSKI, J. & HOLLERBACH, R. 2006 Experimental evidence for magnetorotational instability in a Taylor–Couette flow under the influence of a helical magnetic field. *Phys. Rev. Lett.* **97**, 184502.
- STEFANI, F. & KIRILLOV, O.N. 2015 Destabilization of rotating flows with positive shear by azimuthal magnetic fields. *Phys. Rev. E* **92**, 051001.
- TOBIAS, S.M., PROCTOR, M.R.E. & KNOBLOCH, E. 1997 The role of absolute instability in the solar dynamo. *Astron. Astrophys.* **318**, L55.
- WEBER, N., GALINDO, V., STEFANI, F., WEIER, T. & WONDRAK, TH. 2013 Numerical simulation of the Taylor instability in liquid metals. *New J. Phys.* **15**, 043034.