

VOL. IV

No. 3

O R Y X



THE JOURNAL OF
THE FAUNA PRESERVATION SOCIETY

November, 1957

Price 5/-

THE FAUNA PRESERVATION SOCIETY

Patron :

HER MAJESTY THE QUEEN

President :

THE MARQUESS OF WILLINGDON

Vice-Presidents :

CAPTAIN KEITH CALDWELL
J. SPEDAN-LEWIS, ESQ.
LT.-COL. J. STEVENSON-HAMILTON, J.P., D.L., LL.D.
SIR T. SHENTON THOMAS, G.C.M.G., O.B.E.
DR. WILLARD G. VAN NAME, PH.D.
DR. V. VAN STRAELEN.

Hon. Treasurer :

IAN D. MALCOLMSON, ESQ.

Secretary and Editor of Oryx :

LT.-COL. C. L. BOYLE

Assistant Secretary :

MISS KATHLEEN CLARKE

Council :

Chairman : THE MARQUESS OF WILLINGDON

Vice-Chairmen : CAPTAIN KEITH CALDWELL
SIR T. SHENTON THOMAS, G.C.M.G., O.B.E.

W. AMEER ALI, ESQ., C.I.E., I.C.S. (Retired).	I. D. MALCOLMSON, ESQ.
W. P. CROWCROFT, ESQ., M.Sc., D.Ph.	L. HARRISON MATTHEWS, ESQ., M.A., Sc.D., F.R.S.
F. FRASER DARLING, ESQ., D.Sc., Ph.D., F.R.S.E.	S. A. NEAVE, ESQ., C.M.G., O.B.E., M.A., D.Sc., F.R.E.S.
G. DENT, ESQ., M.C.	CAPTAIN C. R. S. PITMAN, C.B.E., D.S.O., M.C.
JAMES FISHER, ESQ., M.A.	D. R. ROSEVEAR, ESQ., C.B.E.
LIEUT.-COL. G. A. E. GIBBS.	E. O. SHEBBEARE, ESQ.
THE LORD HURCOMB, G.C.B., K.B.E.	SIR WILLIAM LING TAYLOR, C.B.E.
MAXWELL KNIGHT, ESQ., O.B.E., F.L.S.	THE LADY TWEEDSMUIR, M.P.

Offices :

c/o Zoological Society of London, Regent's Park, London, N.W. 1

Telephone Number :

Primrose 3333

Subscriptions :

Annual Subscription : £1.	Life membership : Age under 41	£20
	„ 41-60	£15
	„ 61 and over	£10

Bankers :

BARCLAYS BANK, LTD., Camden Town, N.W. 1.

Notice :

This Society accepts no responsibility for opinions expressed in articles.

November, 1957

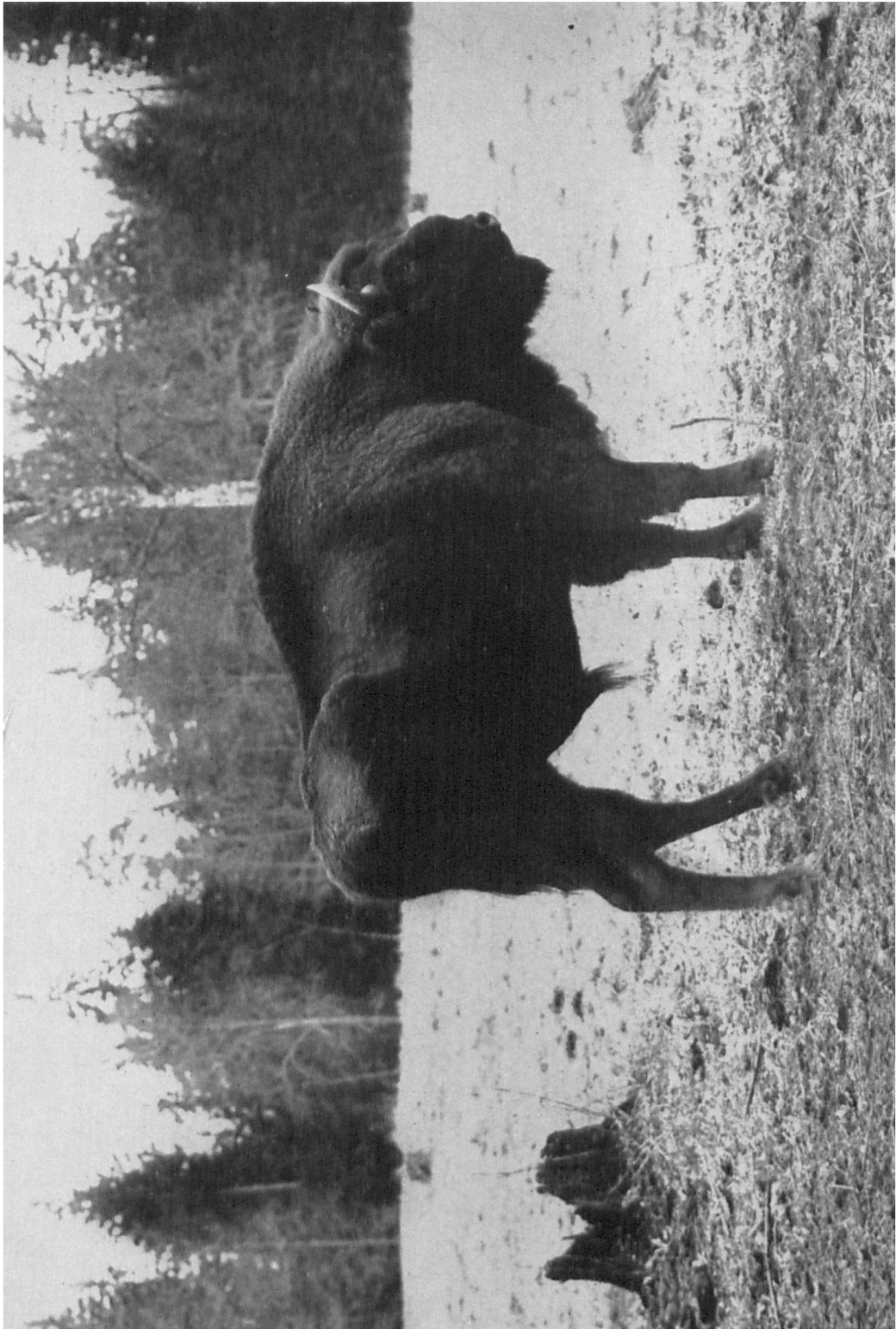


Photo. : J. J. Korpiński

“ EUROPEAN BISON ”

CONTENTS

	PAGE
EDITORIAL NOTES	151
THE SEA OTTER. <i>By Karl W. Kenyon</i>	153
THE NATIONAL PARKS AND RESERVES OF ARGENTINA. <i>By G. Dennler de La Tour, M.D., D.Sc.</i>	159
GOUGH ISLAND—A POSSIBLE SANCTUARY. <i>By M. W. Holdgate</i>	168
NOTES FROM UGANDA	177
THE BIRTH OF AN ELEPHANT. <i>By Captain F. Poppleton</i>	180
POACHING ON THE KRUGER BOUNDARY. <i>By R. Hewitt Ivy</i>	182
THE PROGRESS OF THE EUROPEAN BISON. <i>By D. Jan Żabiński</i>	184
WHITHER NATIONAL PARKS ?	189
THE NEW OUTLOOK IN ECOLOGY. <i>By E. M. Nicholson, C.B.</i>	196
THE REQUIREMENTS OF A CONSERVATION PROGRAMME. <i>By V. N. Serventy, B.Sc., B.Ed.</i>	199
THE QUOKKA	202
REVIEWS	203
THE SOCIETY'S BUSINESS	210

ILLUSTRATIONS

EUROPEAN BISON	<i>Frontispiece</i>
MOTHER SEA OTTER AND PUP	<i>Facing p. 154</i>
ADULT SEA OTTERS	" " 154
LOS GLACIARES NATIONAL PARK	" " 162
IGUAZÚ NATIONAL PARK	" " 162
GOUGH ISLAND—EXPEDITION BASE CAMP	} " 174-5
MOULTING BULL SEA ELEPHANTS	
ROCKHOPPER PENGUINS	
GOUGH ISLAND MOORHEN	
EUROPEAN BISON IN THE BIAŁOWIEŻA FOREST	184

MAPS

NATIONAL PARKS AND RESERVES OF ARGENTINA	161
TRISTAN DA CUNHA AND ITS ASSOCIATE ISLANDS	169