

Status of the snow leopard *Panthera uncia* in the Qilian Mountains, Gansu Province, China

CHANGZHI ZHANG, TENG MA and DUIFANG MA

Abstract Population density estimation is integral to the effective conservation and management of wildlife. The snow leopard *Panthera uncia* is categorized as Vulnerable on the IUCN Red List, and reliable information on its density is a prerequisite for its conservation and management. Little is known about the status of the snow leopard in the central and eastern Qilian Mountains, China. To address this, we estimated the population density of the snow leopard using a spatially explicit capture–recapture model based on camera trapping in Machang in the central and eastern Qilian Mountains during January–March 2019. We set up 40 camera traps and recorded 84 separate snow leopard captures over 3,024 trap-days. We identified 18 individual snow leopards and estimated their density to be 2.26/100 km². Our study provides baseline information on the snow leopard and the first population estimate for the species in the central and eastern Qilian Mountains.

Keywords Camera trapping, China, density, *Panthera uncia*, Qilian Mountains, snow leopard, spatially explicit capture–recapture

Introduction

Many large carnivores are keystone species and any population decline can lead to dramatic ecological effects if their densities are reduced below certain thresholds, resulting in oversimplified ecosystems. The snow leopard *Panthera uncia* is considered a typical high mountain species of the arid and semi-arid areas of central Asia, with a range that includes 12 countries (McCarthy et al., 2017). It is a flagship species for the conservation of the high-altitude ecosystems of Asia. The species is widely but thinly distributed across a range of 1,776,000–3,300,000 km², with an estimated population size of 7,446–7,996 (McCarthy et al., 2017). However, there is a high level of uncertainty regarding these estimates as the remote and rugged mountain habitat of the species is a challenging environment in which to work. Although the

snow leopard was recategorized from Endangered to Vulnerable in 2017, there is a consensus that snow leopard conservation efforts must be expanded and improved (Mallon & Jackson, 2017). The species is also listed in Appendix I of CITES, which means that international trade in the species and its body parts is illegal. The species faces numerous threats, including retaliatory killing for livestock predation, prey depletion, habitat degradation and loss as a result of developmental activities, poaching and global climate change (McCarthy et al., 2016, 2017; Mallon & Jackson, 2017; Aishwarya & Shekhar, 2018; Ale & Mishra, 2018; Suryawanshi et al., 2019; Li et al., 2020).

Reliable information on population status is fundamental for effective conservation and management, and imperative for appropriate and effective conservation interventions. However, reliable population information can be difficult to obtain for carnivores because they often occur at low densities and may be nocturnal, elusive and range over relatively large areas (O'Connell et al., 2011). The situation is exacerbated for snow leopards because this species occurs principally in terrain that is difficult to access and at high elevations (Jackson et al., 2006). As a result, < 1% of the global distribution of the species had been adequately surveyed by 2018 (Suryawanshi et al., 2019), although efforts since then have expanded this coverage (e.g. Suryawanshi et al., 2021). Assessments of the conservation status of the snow leopard in unsurveyed regions across its range are thus required to inform management decisions. A collaborative initiative, the Population Assessment of the World's Snow Leopards, is currently being implemented by various organizations and government agencies.

Recent habitat suitability and connectivity modelling suggests that the entire span of the Qilian Mountains, Gansu Province, China, is more important to regional and global snow leopard conservation goals than was previously recognized (Li et al., 2020). Comparatively high estimated snow leopard densities (3.31 snow leopards/100 km²) in the western Qilian Mountains (Alexander et al., 2015) lend support to this. In this study we investigate the population status of the snow leopard in the previously unsurveyed central and eastern Qilian Mountains. With 32,038 km² of potentially suitable, continuous, high-quality snow leopard habitat, these mountains are one of seven snow leopard landscape conservation units identified using maximum entropy modelling that previous expert knowledge-based planning did not identify (Li et al., 2020). We used camera traps and spatially explicit capture–recapture methods

CHANGZHI ZHANG (Corresponding author, orcid.org/0000-0002-0008-0886, amurtiger@126.com) and TENG MA School of Environmental Studies, China University of Geosciences (Wuhan), Wuhan 430000, China

DUIFANG MA Management Bureau of the Qilianshan National Nature Reserve, Zhangye, China

Received 1 November 2022. Revision requested 8 December 2022.

Accepted 10 March 2023. First published online 10 August 2023.

This is an Open Access article, distributed under the terms of the Creative Commons Attribution licence (<https://creativecommons.org/licenses/by/4.0/>), which permits unrestricted re-use, distribution, and reproduction in any medium, provided the original work is properly cited.

Oryx, 2024, 58(2), 255–260 © The Author(s), 2023. Published by Cambridge University Press on behalf of Fauna & Flora International doi:10.1017/S0030605323000340

<https://doi.org/10.1017/S0030605323000340> Published online by Cambridge University Press

(Borchers & Efford, 2008) to estimate snow leopard population density in this area.

Study area

The Qilian Mountains lie at the north-eastern margin of the Tibetan Plateau in Gansu Province, China. The 26,530 km² Qilianshan National Nature Reserve on the northern slopes of the Qilian Mountains was established in 1988 to protect the forests and wildlife of this region. We conducted our research in the central and eastern region of the Reserve, known as Machang (Fig. 1), located at the boundary of the Hei and Shiyang river systems and characterized by high mountains, deep valleys and a dense network of rivers. Altitude is 2,420–4,933 m, with strong vertical gradients of vegetation comprising mainly grassland (*Stipa przewalskii* montane grassland and *Bistorta vivipara* alpine grassland) and shrub vegetation (*Caragana* spp.), with isolated areas of forest (*Picea crassifolia* and *Sabina przewalskii* forests). The study area supports a mammalian carnivore assemblage that, in addition to the snow leopard, includes the grey wolf *Canis lupus*, red fox *Vulpes vulpes*, Tibetan fox *Vulpes ferrilata*, Pallas's cat *Otocolobus manul* and Chinese mountain cat *Felis bieti*, and ungulates including the blue sheep *Pseudois nayaur*, Alpine musk deer *Moschus chrysogaster*, red deer *Cervus*

elaphus and Siberian roe deer *Capreolus pygargus*. According to a policy issued in 2017 by the government of Gansu, livestock herding is limited in the study area, and the areas surrounding Qilianshan National Nature Reserve are used by herders to graze livestock, principally yak and sheep.

Methods

Camera-trapping survey

We deployed 40 camera traps (Ereagle E1B, Shenzhen Ereagle Technology, Shenzhen, China) over an area of c. 650 km², with a minimum spacing of 1 km between camera traps, during January–March 2019. The study area theoretically spanned multiple snow leopard home ranges as it is larger than the best available estimate of mean minimum convex polygon home range size for snow leopards (c. 500 km²; Johansson et al., 2016). We assumed a temporally closed population as our sampling period was comparatively short relative to snow leopard lifespan (Karanth & Nichols, 1998; Alexander et al., 2015). We placed camera traps systematically, in a 5 × 5 km grid, with two camera-trap stations, each comprising a single camera, in each grid cell. We maximized detection probability by placing cameras at sites where snow leopards were likely to travel (e.g. near snow leopard signs such as scrapes,

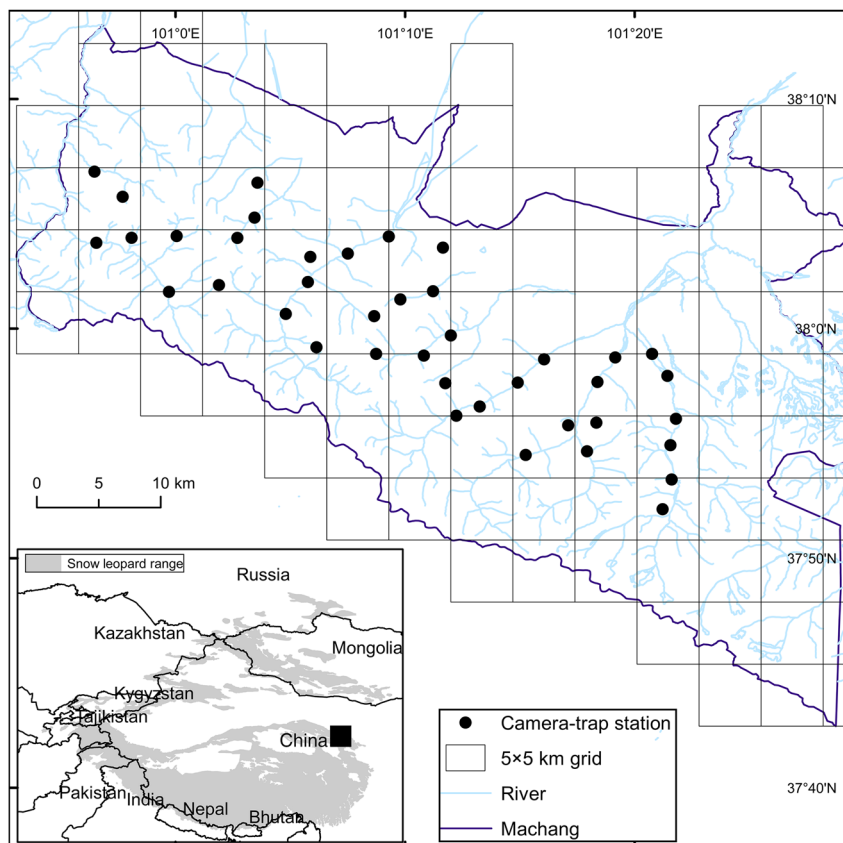


FIG. 1 The study area in Machang, central and eastern Qilian Mountains, China, showing the 5 × 5 km grid and the locations of the camera-trap stations (two per grid cell) used for surveying the snow leopard *Panthera uncia*. The inset map illustrates the range of the snow leopard (McCarthy et al., 2017).

pugmarks, scats and scent marks or around terrain features such as narrow ridgelines, bottoms, saddles and outcrops that are connection points between areas). We placed cameras in rock piles 45–50 cm above the ground. The cameras were triggered by heat in motion and programmed to capture three consecutive photographs and 10 s of video per trigger, with a 1 min delay between triggers.

Two authors (CZ and DM) independently identified individual snow leopards in photographs, aided by video records if available, and jointly reviewed any discrepancies in identification (which occurred for six capture events). A third author (TM) resolved any disagreement, to achieve final consensus on the identity of each snow leopard. Following concerns raised previously (Johansson et al., 2020), we assessed the accuracy level for snow leopard individual identification using the Snow Leopard Training and Evaluation Toolkit (Snow Leopard Network, 2019). The accuracy levels for our three observers were 94.48%, 89.68% and 86.78%, respectively, from 30 blind, independent trials in which each observer identified 100 photographs of known identity. We assumed this level of accuracy was adequate for abundance estimates. We defined an independent detection event as all photographs and videos of an individual that we obtained at the same camera-trap station within a 30-min period. We constructed individual capture histories using a 24-h sampling occasion length.

Data analysis

Using a maximum-likelihood spatially explicit capture–recapture framework we estimated snow leopard density using the *secr* package (Efford, 2017) in *R* 4.2.1 (R Core Team, 2022). Spatially explicit capture–recapture is a spatially explicit hierarchical modelling process that combines a state model and an observation model. We used a half-normal detection function for the observation model. We thus assumed that capture probability declined monotonically with distance. We ignored habitat effects on snow leopard density and instead assumed a homogeneous Poisson distribution for latent individual activity centres (Borchers & Efford, 2008). We used a homogeneous distribution because we were primarily interested in density rather than landscape ecology, and we used a Poisson distribution because snow leopards are territorial and solitary (Darmaraj, 2012). We assumed there were no temporal effects on the detection probability of snow leopards during the 3-month survey period.

We used a 24-km buffer around a minimum convex polygon of the survey area to generate the model state space, with potential activity centres spaced at regular intervals of 1.4 km, based on previous recommendations (Alexander et al., 2015). Based on our field knowledge, we excluded areas outside nature reserves. These areas are unsuitable habitat for snow leopard because of dense human activity.

We conducted a closure test (Otis et al., 1978), using the *secr* package, to evaluate whether the closed population assumption was violated. We fitted three models for the detection functions, including a learned response model (*b*, where snow leopard detection probability changes depending on previous captures), a site learned effectiveness model (*k*, where site effectiveness changes once a snow leopard is caught on camera) and a site learned response model (*bk*, where snow leopard detection probability changes at a particular site once a snow leopard is caught on camera). We used the best-supported model to estimate snow leopard density (*D*), detection probability (*g₀*) and the spatial scale over which the detection probability declines as the distance between the activity centre of an individual and the camera-trap station increases (σ), and the 95% confidence intervals (CIs) of these parameters. We assessed relative model support using the Akaike information criterion corrected for small sample sizes (AICc; Burnham & Anderson, 2002).

Results

We recorded 87 snow leopard captures, of which we discarded three because the captures were within 24 h of a previous capture. We therefore retained 84 captures over 3,024 trap-days, a mean capture success rate of 2.78 captures/100 trap-days. A total of 50 (60%) capture incidences were of insufficient quality to allow individual recognition. The remaining 34 captures were suitable for further analysis, from which we identified 18 individual snow leopards. Ten identified individuals were captured once, four captured twice, two captured three times, one captured four times and one captured six times. We detected the 18 individuals a mean of 1.89 times (range 1–6), and recorded individuals detected more than once at a mean of 2.80 locations (range 1–8). The 18 individual snow leopards captured included a group of three individuals, of which we assumed two to be subadults. We considered these as separate individuals in the analysis.

The closure test supported the assumption that the population was closed during the survey period ($z = -0.28$, $P = 0.34$). A constant capture probability (*g₀*) model was the best-fitting model based on AICc (Table 1). The estimated snow leopard density was 2.26 snow leopards/100 km² (95% CI 1.24–4.18) over an area of 5,484 km². The detection probability at the activity centre (*g₀*) was 0.04 (95% CI 0.01–0.08) and the scale parameter of the space use submodel (σ) was 5,642 (95% CI 4,835–7,058).

Discussion

Our study provides the first estimate of snow leopard population density in the central and eastern Qilian Mountains,

TABLE 1 Model comparison table using the Akaike information criterion adjusted for small sample sizes (AICc) for spatially explicit capture–recapture models, to estimate snow leopard *Panthera uncia* density in Machang, central and eastern Qilian Mountains, China (Fig. 1), during January–March 2019.

Model ¹	K ²	AICc	ΔAICc ³	Model weight
$D(\cdot)g0(\cdot), \sigma(\cdot)$	3	2,675.45	0.00	0.65
$D(\cdot)g0(b), \sigma(\cdot)$	4	2,676.72	2.59	0.19
$D(\cdot)g0(k), \sigma(\cdot)$	4	2,893.65	16.79	0.09
$D(\cdot)g0(bk), \sigma(\cdot)$	4	2,894.15	18.42	0.06

¹D, snow leopard density; go, detection probability; σ , spatial scale over which the detection probability declines as the distance between the activity centre of an individual and the camera-trap station increases.

²Number of model parameters.

³Difference in AICc to the top-ranked model.

China. This information will support regional and global snow leopard conservation, research and management.

Accurate population and demographic estimates are critical for snow leopard conservation. Our overall density estimate of 2.26 snow leopards/100 km² is comparable to other published capture–recapture-based estimates for the species (range 0.12–8.49 snow leopards/100 km²; Jackson et al., 2006, 2009; McCarthy et al., 2008; Alexander et al., 2015; Chen et al., 2017; Kachel et al., 2017; Suryawanshi et al., 2017; Chetri et al., 2019; Nawaz et al., 2021). This variation in density estimates amongst study sites could reflect true differences in abundance or they could be a result of the methods used, or both. At a relatively low mean altitude and with a high human population density, it would be reasonable to expect a lower snow leopard density in our study area compared to the higher-elevation landscapes of the western Qilianshan National Nature Reserve, for which the density estimate is 3.3 snow leopards/100 km² (95% CI 1.4–5.3; Alexander et al., 2015).

Earlier estimates of density based on capture–recapture models (e.g. McCarthy et al., 2008) as well as spatial density estimates for small study areas might be positively biased. A meta-analysis has demonstrated that surveys in small areas and a bias towards studies in good-quality habitat could have overestimated snow leopard densities by up to five times (Suryawanshi et al., 2019). The spatial coverage of a survey is one of the most important factors affecting the reliability of estimates from spatially explicit capture–recapture models. It has been recommended that a minimum survey area of 573 km² is required for estimating density reliably (Suryawanshi et al., 2019). Spatially explicit capture–recapture methods overcome the edge effects that are problematic in conventional capture–recapture methods (Otis et al., 1978), and these models performed well if the trapping arrays were similar to or larger than the mean home range of the species of concern (Sollmann et al., 2012). The mean 95% minimum convex polygon home range estimate for the snow leopard is

c. 500 km² (Johansson et al., 2016). Our study area (625 km²) was larger than both this and the recommended minimum sampling area of 573 km², and these areas are larger than those used in most previous estimations of snow leopard density (Jackson et al., 2006, 2009; Alexander et al., 2015; Chen et al., 2017; Suryawanshi et al., 2017).

An adequate sample size of captured and recaptured individuals is required for analyses of the precision of spatially explicit capture–recapture estimates (Sun et al., 2014; Alexander et al., 2015). A minimum of 10–20 individuals has been suggested as an adequate sample size (Otis et al., 1978), and a minimum of 10 recaptures is required to draw reliable inferences from spatially explicit capture–recapture analysis (Efford et al., 2004). Many previous snow leopard studies have identified < 10 individuals (Jackson et al., 2006, 2009; Chen et al., 2017; Kachel et al., 2017; Suryawanshi et al., 2017; Nawaz et al., 2021). Usable detections were also limited in our study (10 individuals were only captured once and four were captured twice each), highlighting the importance of optimizing captures for individual identification. To counter the main cause of low-quality images, inadequate night-time illumination (Alexander et al., 2015), we used cameras with flash. However, 60% of the photographs obtained could not be used for individual identification because individual features were washed out by the flash and/or only a part of the body was visible as the animal moved across the camera's field of view. More sensitive and higher definition cameras and lures such as castor or fish oils could be used to increase photograph quality and capture probability, respectively, in future research.

The statistical methods used in spatially explicit capture–recapture modelling are sensitive to trap configuration (Sun et al., 2014; Nawaz et al., 2021). The recommendation is that trap spacing be at most the maximum distance moved during the research period (the 2 σ rule of thumb; Sun et al., 2014). In our study design the 1-km trap spacing was < 2 σ (11 km). In addition, individuals are not reliably and accurately identified in many camera-based capture–recapture studies, potentially resulting in systematically inflated population abundance estimates by a third on average (Johansson et al., 2020).

The other constraints of density estimation using spatially explicit capture–recapture modelling relate to the method for determining the effective area surveyed. Following Alexander et al. (2015) we excluded areas outside Qilianshan National Nature Reserve identified as unsuitable habitat for snow leopards, based on our field knowledge. Because a snow leopard had been previously observed in forest in Qilianshan National Nature Reserve, we included areas below 3,000 m in our study, even though it has been suggested that snow leopards do not use forest (Snow Leopard Network, 2014). We believe there is a negligible probability of snow leopard activity centres

being located outside nature reserves in anthropogenic areas (villages, agricultural lands, roads and development sites) even though snow leopards might have predated on livestock in such locations in our study area.

The snow leopard is an apex predator of high-altitude mountain ecosystems and has the potential to be an iconic indicator of the ecological condition of such settings. Effective snow leopard conservation management requires that snow leopard density estimates are both accurate and precise, and determined with sufficient frequency to facilitate informed decision-making. In this study we estimated snow leopard density using a spatially explicit capture–recapture model based on camera trapping, providing a reliable baseline against which the trajectory of this population can be monitored following any future conservation interventions. Improvements in any future studies, such as increasing camera-trap capture rate and improving photograph quality, would be beneficial. We also recommend that robust study designs using optimization and simulation tools (Dupont et al., 2020; Durbach et al., 2020) are adopted.

Acknowledgements This study was funded by WWF China. We thank the staff of Qilianshan National Nature Reserve, especially K.T. Liao and Y.P. Chen for their support; and two anonymous reviewers for their critiques.

Author contributions Material development: CZ; fieldwork: CZ, DM; data preparation and analysis: CZ; study design: TM; writing: CZ; revision: TM, DM.

Conflicts of interest None.

Ethical standards This research abided by the *Oryx* guidelines on ethical standards and the research did not involve any human subjects, experimentation with animals and/or collection of specimens.

References

- AISHWARYA, M. & SHEKHAR, K.N. (2018) Monitoring illegal trade in snow leopards: 2003–2014. *Global Ecology and Conservation*, 14, e00387.
- ALE, S.B. & MISHRA, C. (2018) The snow leopard's questionable comeback. *Science*, 359, 1110.
- ALEXANDER, J.S., GOPALASWAMY, A.M., KUN, S., PHILIP, R. & ANTONI, M. (2015) Face value: towards robust estimates of snow leopard densities. *PLOS One*, 10, e0134815.
- BORCHERS, D.L. & EFFORD, M.G. (2008) Spatially explicit maximum likelihood methods for capture–recapture studies. *Biometrics*, 64, 377–385.
- BURNHAM, K.P. & ANDERSON, D.R. (2002) *Model Selection and Multi-Model Inference: A Practical Information-Theoretic Approach*, 2nd edition. Springer-Verlag, New York, USA.
- CHEN, P., GAO, Y., WANG, J., QIONG, P., CERING, L., HU, H. & SHI, K. (2017) Status and conservation of the Endangered snow leopard *Panthera uncia* in Qomolangma National Nature Reserve, Tibet. *Oryx*, 51, 752–752.
- CHETRI, M., ODDEN, M., SHARMA, K., FLAGSTAD, Ø. & WEGGE, P. (2019) Estimating snow leopard density using fecal DNA in a large landscape in north-central Nepal. *Global Ecology and Conservation*, 17, e00548.
- DARMARAJ, M.R. (2012) *Conservation and ecology of tigers in a logged-primary forest mosaic in Peninsular Malaysia*. PhD thesis. University of Kent, Canterbury, UK.
- DUPONT, G., ROYLE, J.A., NAWAZ, M.A. & SUTHERLAND, C. (2020) Optimal sampling design for spatial capture–recapture. *Ecology*, 102, 1–9.
- DURBACH, I., BORCHERS, D., SUTHERLAND, C. & SHARMA, K. (2020) Fast, flexible alternatives to regular grid designs for spatial capture–recapture. *Methods in Ecology and Evolution*, 12, 298–310.
- EFFORD, M. (2017) *secr: Spatially Explicit Capture–Recapture*. cran.r-project.org/web/packages/secr/index.html [accessed July 2023].
- EFFORD, M.G., DAWSON, D.K. & ROBBINS, C.S. (2004) *DENSITY*: software for analysing capture–recapture data from passive detector arrays. *Animal Biodiversity Conservation*, 27, 217–228.
- JACKSON, R.M., MUNKHTSONG, B., MALLON, D.P., NARANBAATAR, G. & GERELMAA, K. (2009) Camera-trapping snow leopard in the Tost Uul region of Mongolia. *Cat News*, 51, 18–21.
- JACKSON, R.M., ROE, J.D., WANGCHUK, R. & HUNTER, D.O. (2006) Estimating snow leopard population abundance using photography and capture–recapture techniques. *Wildlife Society Bulletin*, 34, 772–781.
- JOHANSSON, Ö., RAUSET, G.R., SAMELIUS, G., MCCARTHY, T., ANDRÉN, H., TUMURSUKH, L. & MISHRA, C. (2016) Land sharing is essential for snow leopard conservation. *Biological Conservation*, 203, 1–7.
- JOHANSSON, Ö., SAMELIUS, G., WIKBERG, E., CHAPRON, G., MISHRA, C. & LOW, M. (2020) Identification errors in camera-trap studies result in systematic population overestimation. *Scientific Reports*, 10, 6393.
- KACHEL, S.M., MCCARTHY, K.P., MCCARTHY, T.M. & OSHURMAMADOV, N. (2017) Investigating the potential impact of trophy hunting of wild ungulates on snow leopard *Panthera uncia* conservation in Tajikistan. *Oryx*, 51, 597–604.
- KARANTH, K.U. & NICHOLS, J.D. (1998) Estimation of tiger densities in India using photographic captures and recaptures. *Ecology*, 79, 2852–2862.
- LI, J., WECKWORTH, B.V., MCCARTHY, T.M., LIANG, X. & BEISSINGER, S.R. (2020) Defining priorities for global snow leopard conservation landscapes. *Biological Conservation*, 241, 108387.
- MALLON, D.P. & JACKSON, R.M. (2017) A downlist is not a demotion: Red List status and reality. *Oryx*, 51, 1–5.
- MCCARTHY, K.P., FULLER, T.K., MING, M., MCCARTHY, T.M. & JUMABAEV, W.K. (2008) Assessing estimators of snow leopard abundance. *Journal of Wildlife Management*, 72, 1826–1833.
- MCCARTHY, T., MALLON, D., JACKSON, R., ZAHLER, P. & MCCARTHY, K. (2017) *Panthera uncia*. In *The IUCN Red List of Threatened Species 2017*. dx.doi.org/10.2305/IUCN.UK.2017-2.RLTS.T22732A50664030.en.
- MCCARTHY, T., MALLON, D., SANDERSON, E.W., ZAHLER, P. & FISHER, K. (2016) What is a snow leopard? Biogeography and status overview. In *Snow Leopards* (eds T. McCarthy & D. Mallon), pp. 23–42. Academic Press, Cambridge, USA.
- NAWAZ, M.A., KHAN, B.U., MAHMOOD, A., YOUNAS, M., DIN, J.U. & SUTHERLAND, C. (2021) An empirical demonstration of the effect of study design on density estimations. *Scientific Reports*, 11, 13104.
- O'CONNELL, A.F., NICHOLS, J.D. & KARANTH, K.U. (2011) *Camera Traps in Animal Ecology: Methods and Analyses*. Springer Tokyo, Tokyo, Japan.
- OTIS, D.L., BURNHAM, K.P., WHITE, G.C. & ANDERSON, D.L. (1978) Statistical inference from capture data on closed animal populations. *Wildlife Monographs*, 62, 3–135.

- R CORE TEAM (2022) *R: A Language and Environment for Statistical Computing*. R Foundation for Statistical Computing, Vienna, Austria. r-project.org [accessed 14 July 2023].
- SNOW LEOPARD NETWORK (2014) *Snow Leopard Survival Strategy. Revised Version 2014.1*. Snow Leopard Network, Seattle, USA. snowleopardnetwork.org/resource-centre/research-methods/1975-2 [accessed July 2023].
- SNOW LEOPARD NETWORK (2019) *Snow Leopard Training and Evaluation Toolkit*. camtraining.globalsnowleopard.org [accessed 14 July 2023].
- SOLLMANN, R., GARDNER, B. & BELANT, J.L. (2012) How does spatial study design influence density estimates from spatial capture–recapture models? *PLOS One*, 7, e34575.
- SUN, C.C., FULLER, A.K. & ROYLE, J.A. (2014) Trap configuration and spacing influences parameter estimates in spatial capture–recapture models. *PLOS One*, 9, e88025.
- SURYAWANSHI, K.R., KHANYARI, M., SHARMA, K., LKHAGVAJAV, P. & MISHRA, C. (2019) Sampling bias in snow leopard population estimation studies. *Population Ecology*, 61, 268–276.
- SURYAWANSHI, K.R., REDDY, A., SHARMA, M., KHANYARI, M., BIJOOR, A., RATHORE, D. et al. (2021) Estimating snow leopard and prey populations at large spatial scales. *Ecological Solutions and Evidence*, 2, e12115.
- SURYAWANSHI, K.R., REDPATH, S.M., BHATNAGAR, Y.V., RAMAKRISHNAN, U., CHATURVEDI, V., SMOUT, S.C. & MISHRA, C. (2017) Impact of wild prey availability on livestock predation by snow leopards. *Royal Society Open Science*, 4, 170026.