

## ARTICLES

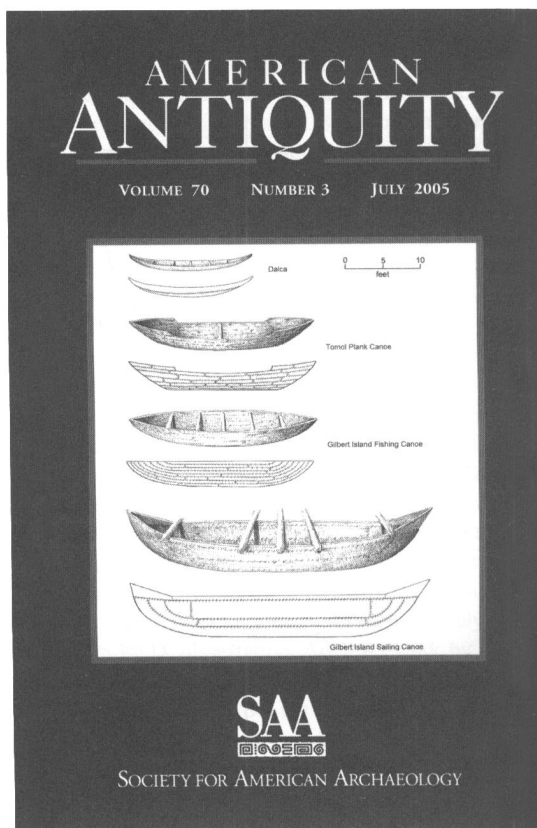
- 403 Site-Use Intensity, Cultural Modification of the Environment, and the Development of Agricultural Communities in Southern Arizona  
*Rebecca M. Dean*
- 433 Plausible Ethnographic Analogies for the Social Organization of Hohokam Canal Irrigation  
*Robert C. Hunt, David Guillet, David R. Abbott, James Bayman, Paul Fish, Suzanne Fish, Keith Kintigh, and James A. Neely*
- 457 Diffusionism Reconsidered: Linguistic and Archaeological Evidence for Prehistoric Polynesian Contact with Southern California  
*Terry L. Jones and Kathryn A. Klar*
- 485 The Devil Is in the Details: The Cascade Model of Invention Processes  
*Michael Brian Schiffer*

## REPORTS

- 503 Evidence of Early Paleoindian Bone Modification and Use at the Sheriden Cave Site (33wy252), Wyandot County, Ohio  
*Brian G. Redmond and Kenneth B. Tankersley*
- 527 Temporal Data Requirements, Luminescence Dates, and the Resolution of Chronological Structure of Late Prehistoric Deposits in the Central Mississippi River Valley  
*Carl P. Lipo, James K. Feathers, and Robert C. Dunnell*
- 545 The Measurement and Interpretation of Cortex in Lithic Assemblages  
*Harold L. Dibble, Utsav A. Schurmans, Radu P. Iovita, and Michael V. McLaughlin*
- 561 Intrasite Spatial Analysis, Ethnoarchaeology, and Paleoindian Land-Use on the Great Plains: The Allen Site  
*Douglas B. Bamforth, Mark Becker, and Jean Hudson*

## COMMENTS

- 581 Rifts in the Theoretical Landscape of Archaeology in the United States: A Comment on Hegmon and Watkins  
*Madonna L. Moss*
- 588 No More Theory Wars: A Response to Moss  
*Michelle Hegmon*



## NOTICE TO AUTHORS

*Latin American Antiquity* publishes original papers on the archaeology, prehistory, and ethnohistory of Latin America, i.e., Mesoamerica, Central America, and South America, together with culturally affiliated adjacent regions. Papers may also treat more general theoretical and methodological issues with relevance to Latin America. Authors submit manuscripts to the editor for consideration as ARTICLES or REPORTS in English, Spanish, or Portuguese. Authors should submit an original and three copies of their manuscripts (including all figures, tables, references, and notes), along with an abstract in both English and Spanish. Detailed information on policy, style, and technical matters of manuscript preparation is given in English in the "Editorial Policy, Information for Authors, and Style Guide for *American Antiquity* and *Latin American Antiquity*," which appeared in September 1992 (vol. 3, no. 3) and in Spanish in "Código editorial, información para autores y guía estilística para *American Antiquity* and *Latin American Antiquity*," which appeared in July 1997 (vol. 8, no. 2). This information is also available in English through the World Wide Web at <http://www.saa.org/Publications/StyleGuide/styframe.html>. For additional information, updates, or clarification, consult the managing editor at the SAA office in Washington, D.C.

### BOARD OF DIRECTORS OF THE SOCIETY FOR AMERICAN ARCHAEOLOGY

#### *Officers*

**President:** KENNETH M. AMES, Portland State University, Department of Anthropology, Portland, OR 97207

**Secretary:** LINDA CORDELL, CU Museum, Henderson Building CB 218, University of Colorado, Boulder, CO 80309-0001

**Treasurer:** GEORGE H. ODELL, 600 S College Ave., Department of Anthropology, University of Tulsa, Tulsa, OK 74104-3126

**Treasurer-Elect:** SUSAN M. CHANDLER, Alpine Archaeological Consultants Inc., P.O. Box 2075, Montrose, CO 81402-2075

#### *Board Members-at-Large*

CHRISTOPHER DORE, Statistical Research Inc., P.O. Box 31865, Tucson, AZ 85751

EMILY MCLUNG DE TAPIA, UNAM/CU Circuito Exterior S/n, Coyoacan, Mexico DF 04510

MADONNA MOSS, Department of Anthropology, 1218 University of Oregon, Eugene, OR 97403-1205

SARAH H. SCHLANGER, NM Bureau of Land Management, PO Box 27115, NM 930, Santa Fe, NM 97502-0115

MIRIAM T. STARK, Department of Anthropology, University of Hawaii, 2424 Maile Way, Saunders 346, Honolulu, HI 96822-2223

JOE WATKINS, Department of Anthropology MSC01 1040, University of New Mexico, Albuquerque, NM 87131

#### *Ex-Officio Board Member*

TOBI A. BRIMSEK, Executive Director, Society for American Archaeology, 900 Second St, N.E., Suite 12, Washington, D.C., 20002-3557

## ARTICLES

- 235 A Population Estimate for the Epiclassic Middle Malpas Valley (La Quemada), Zacatecas, Mexico  
*Charles D. Trombold*
- 255 Wood of the Gods: The Ritual Use of Pine (*Pinus* Spp.) by the Ancient Lowland Maya  
*Christopher T. Morehart, David L. Lentz, And Keith M. Prufer*
- 275 Di Peso's Concept of the Northern Sierra: Evidence from the Upper Bavispe Valley, Sonora, Mexico  
*John E. Douglas and César A. Quijada*
- 293 The Utilization of Grooved Human Bones: A Reanalysis of Artificially Modified Human Bones Excavated by Carl Lumholtz at Zacapu, Michoacán, Mexico  
*Grégory Pereira*

## REPORTS

- 313 Selective Faunal Provisioning in the Southern Highlands of Formative Ecuador  
*Peter W. Stahl*
- 329 Archaic Funerary Pattern or Postdepositional Alteration? The Patapatane Burial in the Highlands of South Central Andes  
*Calogero M. Santoro, Vivien G. Standen, Bernardo T. Arriaza, and Tom D. Dillehay*

## REVIEWS

- 347 Maya Zooarchaeology: New Directions in Method and Theory, edited by Kitty F. Emery  
*Laura L. Scheiber*
- 349 The New Catalog of Maya Hieroglyphs. Vol. 1: The Classic Period Inscriptions, by Martha J. Macri and Matthew G. Looper  
*Sören Wichmann*
- 351 Making Ecuadorian Histories: Four Centuries of Defining Power, by O. Hugo Benavides  
*Ximena Sosa-Buchholz*

*On the Cover:* Representation of Quetzalcoatl touching a bone rattle (redrawn from plate 24 of the *Códice Vindobonensis*). From "The Utilization Of Grooved Human Bones: A Reanalysis Of Artificially Modified Human Bones Excavated By Carl Lumholtz At Zacapu, Michoacán, Mexico," by Grégory Pereira, page 296.

∞ The paper used in this publication meets the requirements of ANSI/NISO Z39.48-1992  
(Permanence of Paper).