

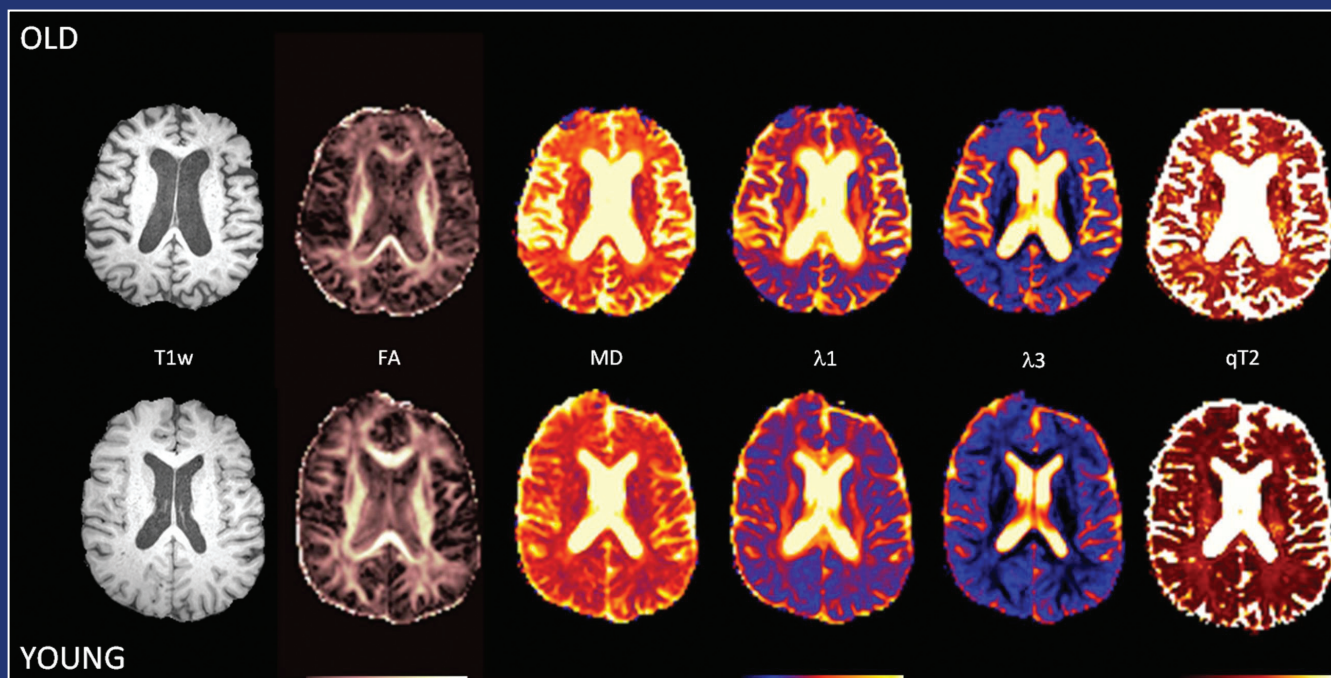
# International Psychogeriatrics

[journals.cambridge.org/ipg](http://journals.cambridge.org/ipg)



The Official Journal of the  
International Psychogeriatric Association  
*Better Mental Health for Older People*

Special issue – focus on mental health issues in long-term-care homes – guest editors David Conn and John Snowden



CAMBRIDGE  
UNIVERSITY PRESS

# International Psychogeriatrics



## Editorial Panel

EDITOR-IN-CHIEF

**David Ames**  
*Melbourne, Australia*

EDITOR-IN-CHIEF, ELECT

**Nicola Lautenschlager**  
*Melbourne, Australia*

DEPUTY EDITORS

**John O'Brien**  
*Newcastle, UK*

**Nancy Pachana**  
*Brisbane, QLD, Australia*

**Craig Ritchie**  
*London, UK*

**Guk-Hee Suh**  
*Seoul, South Korea*

ASSOCIATE EDITORS

**Ricardo Allegri**  
*Buenos Aires, Argentina*

**Oswaldo Almeida**  
*Perth, Australia*

**Dag Årslund**  
*Stavanger, Norway*

**Olusegun Baiyewu**  
*Ibadan, Nigeria*

**Robert Baldwin**  
*Manchester, UK*

**Susan Benbow**  
*Wolverhampton, UK*

**Henry Brodaty**  
*Sydney, Australia*

**Alistair Burns**  
*Manchester, UK*

**Helen Fung-kum Chiu**  
*Hong Kong, China*

**Jiska Cohen-Mansfield**  
*Rockville, MD, USA*

**Martin Cole**  
*Montreal, Canada*

**Claudia Cooper**  
*London, UK*

**Michael Davidson**  
*Tel-Hashomer, Israel*

**Engin Eker**  
*Istanbul, Turkey*

**Hans Förstl**  
*Munich, Germany*

**Mary Ganguli**  
*Pittsburgh, PA, USA*

**Serge Gauthier**  
*Montreal, Canada*

**Janice Graham**  
*Halifax, Canada*

**Thea Heeren**  
*Zeist, The Netherlands*

**Akira Homma**  
*Tokyo, Japan*

**K. S. Jacob**  
*Vellore, India*

**S. Kalyanasundaram**  
*Bangalore, India*

**Sirkka-Liisa Kivelä**  
*Turku, Finland*

**Brian Lawlor**  
*Dublin, Ireland*

**João Carlos Barbosa Machado**  
*Belo Horizonte, Brazil*

**Raimundo Mateos**  
*Santiago de Compostela, Spain*

**Paul Merrick**  
*Auckland, New Zealand*

**Aleksandra Milićević-Kalašić**  
*Belgrade, Serbia*

**Peter Rabins**  
*Baltimore, MD, USA*

**Karen Ritchie**  
*Montpellier, France*

**Robert Robinson**  
*Iowa City, IA, USA*

**Ajit Shah**  
*London, UK*

**Gary Small**  
*Los Angeles, CA, USA*

**Sergio Starkstein**  
*Perth, Australia*

**Donny Hin-Yeung Tsang**  
*Pu Tz City, Taiwan*

**Tischa van der Cammen**  
*Rotterdam, The Netherlands*

**Johannes Wancata**  
*Vienna, Austria*

**Xin Yu**  
*Beijing, China*

MANAGING EDITOR

**Susan M. Oster**  
*Northfield, IL, USA*

CHAIRMAN IPA  
PUBLICATIONS COMMITTEE

**Leonardo Pantoni**  
*Florence, Italy*

STATISTICAL ADVISOR  
**John Chibnall**  
*St. Louis, MO, USA*

BOOK REVIEW EDITOR  
**Michael Philpot**  
*London, UK*

FOUNDER EDITOR  
**Gene Cohen**  
*Deceased*

EDITOR EMERITUS  
**Robin Eastwood**  
*Bere Ferrers, UK*

PAST EDITORS  
**Manfred Bergener**  
**Gene Cohen**  
**Robin Eastwood**  
**Sanford Finkel**  
**Kazuo Hasegawa**  
**Akira Homma**

ASSISTANT TO THE  
EDITOR-IN-CHIEF

**Marilyn Kemp**  
*Melbourne, Australia*

## Subscriptions

*International Psychogeriatrics* (ISSN 1041-6102) is published eight times (February, March, May, June, August, September, November and December) (22). The annual subscription price (excluding VAT), including delivery by air where appropriate, plus electronic access for subscribers of Volume 22 is £428 (US\$834 in the USA, Canada and Mexico) for institutions; £194 (US\$378 in the USA, Canada and Mexico) for individuals ordering direct from the publisher and certifying that the journal is for their personal use. Single parts are £67 (US\$130 in the USA, Canada and Mexico) plus postage. The electronic only price and print only price available to institutional subscribers is £330 and £397 (US\$645 and \$773 in the USA, Canada and Mexico), respectively. Orders, which must be accompanied by payment, may be sent to a bookseller, subscription agent or to the publisher: Cambridge University Press, The Edinburgh Building, Shaftesbury Road, Cambridge CB2 8RU, UK; or in the USA, Canada and Mexico: Cambridge University Press, Journals Fulfillment Department, 100 Brook Hill Drive, West Nyack, New York 10994-2133. EU subscribers (outside the UK) who are not registered for VAT should add VAT at their country's rate. VAT registered subscribers should provide their VAT registration number. Japanese prices for institutions are available from: Kinokuniya Company Ltd, PO Box 55, Chitose, Tokyo 156, Japan. Periodicals postage paid at New York, NY, and at additional mailing offices. POSTMASTER: send address changes in USA, Canada and Mexico to: *International Psychogeriatrics*, Cambridge University Press, 100 Brook Hill Drive, West Nyack, New York 10994-2133. Claims for missing issues should be made immediately on receipt of the subsequent issue.

## Internet access

This journal is included in the Cambridge Journals Online service which can be found at [journals.cambridge.org/ipp](http://journals.cambridge.org/ipp). For further information on other Press titles go to <http://www.cambridge.org>.

## Abstracts

*International Psychogeriatrics* is abstracted and indexed in *Abstracts in Social Gerontology*; *Current Literature on Aging*; *AgeLine*; *Combined Health Information Database (CHID)*; *Cumulative Index to Nursing & Allied Health Literature (CINAHL)*; *Current Contents/Social and Behavioral Sciences*; *EMBASE/Excerpta Medica*; *e-psyche*; *Index Medicus/MEDLINE*; *ISI Alerting Services*; *Mental Health Abstracts*; *New Literature on Old Age*; *PsychINFO*; *PsychLIT*; *Psychological Abstracts*; *PubMed*; *Social Sciences Citation Index*; *Social Services Abstracts*; *Social Work Abstracts*; *Sociedad Iberoamericana de Información Científica (SIIC) Data Bases*; *SciSearch* and *Zeitschriftenbibliographie Gerontologie (GeroLIT)*.

## Copying

This journal is registered with the Copyright Clearance Center, 222 Rosewood Drive, Danvers, MA 01923, USA. Organizations in the USA who are also registered with CCC may therefore photocopy material (beyond the limits permitted by sections 107 and 108 of US Copyright Law) subject to payment to CCC of the per-copy fee of \$16.00. This consent does not extend to multiple copying for promotional purposes. Code 1041-6102/2008. ISI Tear Sheet Service, 3501 Market Street, Philadelphia, PA 19104, USA, is authorized to supply single copies of separate articles for private use only. Organizations authorized by the UK Copyright Licensing Agency may also photocopy material subject to the usual conditions. For all other use, permission should be sought from Cambridge or the American Branch of Cambridge University Press. No other part of this publication may be reproduced, stored or distributed by any means without permission in writing from Cambridge University Press, acting for the copyright holder.

## Acknowledgement

Multi-spectral MR images of young and old subjects from Newcastle MR Centre supplied by Andy Blamire, Chris Cowie, Rosie Watson and John O'Brien from a project funded by the Sir Jules Thorn Charitable Trust. T1w is anatomical, FA is diffusion fractional anisotropy, MD is mean diffusivity, Lambda 1,3 are diffusion values in the main orthogonal directions (from which FA is calculated), qT2 is the quantitative T2 map