

This is a “preproof” accepted article for *Journal of Glaciology*.

This version may be subject to change during the production process.

10.1017/jog.2024.107

Glacier speed-up as a possible precursor to volcanic eruptions at Mount Veniaminof, Alaska

Michael Dieter Martin^{1,2}, Iestyn Barr^{1*}, Benjamin Edwards³, Matteo Spagnolo⁴, Elias Symeonakis¹, Joseph Mallalieu^{1,5}, Kathryn Adamson¹, Donal Mullan⁶, Maximillian Van Wyk de Vries^{7,8,9}

¹Department of Natural Sciences, Manchester Metropolitan University, Manchester, UK

²Institute of Geo-Engineering, Clausthal University of Technology, Clausthal-Zellerfeld, Germany

³Department of Earth Sciences, Dickinson College, Carlisle, PA 17013, USA

⁴School of Geosciences, University of Aberdeen, Aberdeen, UK

⁵School of Geography, Earth and Environmental Sciences, University of Birmingham, Birmingham, UK

⁶School of Natural and Built Environment, Queen’s University Belfast, Belfast, Northern Ireland, UK

⁷School of Geography and the Environment, University of Oxford, Oxford, OX1 3QY, UK

⁸Department of Geography, University of Cambridge, Cambridge CB2 3EL, UK

⁹Department of Earth Sciences, University of Cambridge, Cambridge CB3 0EZ, UK

*Corresponding author: i.barr@mmu.ac.uk

This is an Open Access article, distributed under the terms of the Creative Commons Attribution licence (<http://creativecommons.org/licenses/by/4.0>), which permits unrestricted re-use, distribution and reproduction, provided the original article is properly cited.

ORCID

Iestyn Barr: <https://orcid.org/0000-0002-9066-8738>

Matteo Spagnolo: <https://orcid.org/0000-0002-2753-338X>

Elias Symeonakis: <https://orcid.org/0000-0003-1724-2869>

Joseph Mallalieu: <https://orcid.org/0000-0002-1988-8594>

Kathryn Adamson: <https://orcid.org/0000-0002-6272-1458>

Keywords

Volcano, Glacier velocity, Veniaminof, Meltwater, Glaciovolcanism

ABSTRACT

Identifying early indicators of volcanic eruptions is a fundamental part of natural hazard management but is notoriously difficult. Here we consider whether monitoring changes in glacier velocity can help. We use satellite images to investigate changes in the surface velocity of Cone Glacier (Alaska) between November 2017 and January 2022, a period encompassing two eruptions of Mount Veniaminof on which the glacier sits. Our data show high glacier velocities months prior to these eruptions and low velocities immediately before, during and after the 2018 eruption, likely caused by volcanically triggered ice melt and associated changes in subglacial water pressures. Evidence for elevated velocities months prior to eruptions is particularly important and indicates that glacier speed-up might be an early indicator of volcanic unrest. Thus, glaciers could serve as tools for volcano monitoring and eruption forecasting since more than 2500 glaciers globally are located within 5 km of an active volcano.

1 INTRODUCTION

Forecasting volcanic eruptions is a fundamental goal of natural hazard management but is notoriously difficult (Sparks, 2003; Coppola and others, 2020). One key to forecasting and mitigation is continuous monitoring of volcanoes and their surroundings to identify early indicators of unrest (Sparks and others, 2012; Phillipson and others, 2013; Caricchi and others, 2021). Thermal unrest is a particularly useful early indicator since volcanic activity always involves heat transfer to the atmosphere (Coppola and others, 2020) and this sometimes (but not always) begins months or years before eruptions (Reath and others, 2019; Girona and others, 2021). Thermal unrest is also important for its impacts on other aspects of the Earth System, which in some cases might be easier to detect than the thermal signature itself. This is particularly relevant for glaciers, which can respond to thermal unrest through changes in their dimensions, elevation, surface morphology, and velocity (Julio-Miranda and others, 2008; Barr and others, 2018; Reinthaler and others, 2019; Martin et al., 2021; Howcutt et al., 2023; Mallalieu and others, 2024). We hypothesize that the change in glacier velocity occurs when heating (perhaps due to the enhancement of underground hydrothermal activity, Girona and others, 2021) triggers basal melt, leading to increased subglacial water pressures, reduced basal friction, increased sliding, and ice acceleration (Iken and Truffer, 1997; Mair and others, 2003). This means that thermal unrest might lead to periods of glacier speed-up prior to volcanic eruptions, followed by periods of glacier slow-down as efficient subglacial drainage networks develop (Magnússon and others, 2010). These links suggest opportunities for volcano monitoring and eruption forecasting at a global scale, since more than 2500 glaciers globally are located within 5 km of an active volcano (~7 million people live within 30 km of these volcanoes, Fig. 1, Edwards and others, 2020) and satellite images now allow glacier velocity to be frequently and routinely monitored (Millan and others, 2022). Despite this, robust links between volcanic activity and changes in glacier velocity are lacking (Rivera and others, 2012; Barr and others, 2018), and the potential of glacier velocity monitoring for eruption forecasting has never been tested. To help address this, we investigate changes in the surface velocity of Cone Glacier (Fig. 2), Alaska, between November 2017 and January 2022 to establish whether eruptions of Mount

Veniaminof (on which Cone Glacier sits) in 2018 and 2021 triggered observable changes in glacier velocity.

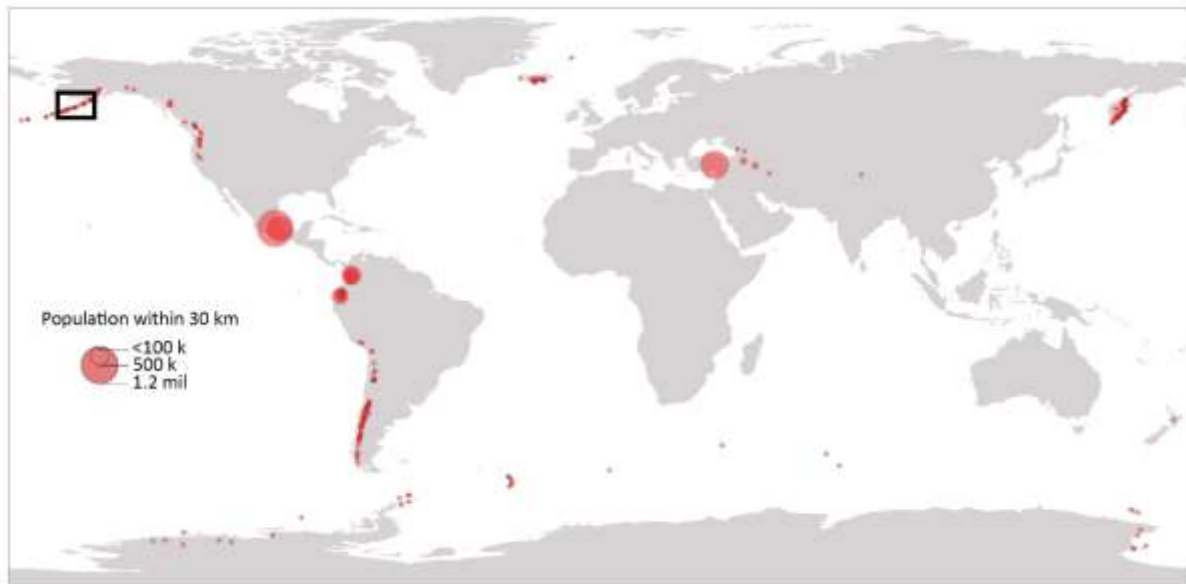


Fig. 1. Active volcanoes globally that have glaciers within a 5 km radius. Circle size corresponds to the number of people living within 30 km of each volcano. Data from Edwards and others (2020). The black box shows the general location of Mount Veniaminof (the focus of this study).

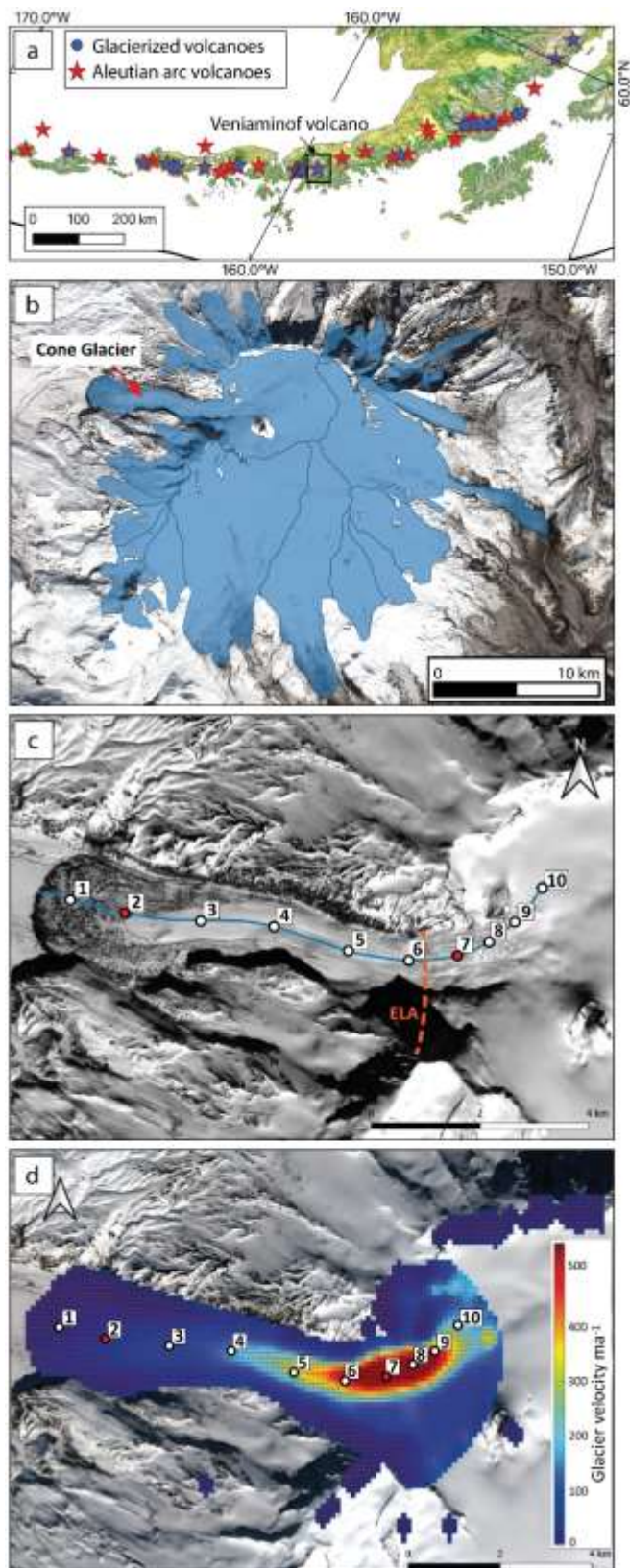


Fig. 2. (a) Location of Mount Veniaminof in the Aleutian Arc volcanic system. (b) The glaciers of Mount Veniaminof (including Cone Glacier), as depicted by the Randolph Glacier Inventory (RGI v7.0, 2023). (c) Profile approximately following the centreline of Cone Glacier

with points (numbered) used for surface velocity time-series analysis. The approximate location of Cone Glacier's equilibrium line altitude (orange dashed line) is based on data from Welch and others, (2007). Points 2 and 7 are (which are key to the results and discussion sections) are shown in red. (d) The mean annual surface velocity of Cone Glacier. In (b), (c), and (d) the background is a Sentinel-2 true colour satellite image from 25 March 2017.

Mount Veniaminof is a large (2507 m a.s.l.) glacierized stratovolcano on the Alaska Peninsula (Fig. 2a) which has experienced at least 19 eruptions since 1830–1840 (Waythomas and others, 2023). The volcano has a summit caldera filled with glacial ice up to 475 m thick (Welch and others, 2007) that is drained by several outlet glaciers, including Cone Glacier (56.20°N, 159.44°W, Fig. 2b). Cone Glacier and the other outlets have equilibrium-line altitudes of ~1300 m a.s.l. (Welch and others, 2007), placing the entire ice-filled caldera in the accumulation zone (Waythomas and others, 2023). Beyond the summit caldera, Cone Glacier comprises a steep and heavily crevassed icefall which descends to a region of lower surface slopes near the terminus (Fig. 2b). Each historical eruption of Veniaminof occurred within the summit caldera from a cinder cone (labelled Cone A in Fig. 2b, see also Fig. 3a) which rises ~250 m above the surrounding ice (Waythomas and others, 2023). Volcanic activity has been mostly limited to small-to-moderate Strombolian eruptions with lava fountaining, low-level gas emissions, and occasional lava flows (Fig. 3b; Loewen and others, 2021; Waythomas, 2021). The two most recent eruptions occurred in 2018 and 2021. The 2018 eruption lasted ~4 months (4 September to 27 December) with a Volcanic Explosivity Index (VEI) of 2 (Waythomas and others, 2023). This eruption produced activity very similar to all other observed historic eruptions, with limited ash dispersal from the cone summit (approx.. 25,000 m³; Waythomas and others, 2022) from sporadic Strombolian eruptions and the production of lava flows (1,200,000 m³; Waythomas and others, 2022) from the cone flanks that flowed downslope onto the ice surface and melted through the surficial snow and firn layers. Rare clear days in July and August 2018 immediately preceding the eruption onset showed elevated surface temperatures on the cone, but due to equipment issues no seismicity was recorded during that period (Waythomas and others, 2022). Comparisons of estimates to changes in the ice surface based on aerial surveys during the eruption (2018) and the following year (2019) are consistent with the eruption

having melted into the caldera snow/firn/ice surface more than 100 m (Dietterich and others, 2021). The 2021 eruption lasted ~1 month (starting on 4 March) with a VEI of 0–1 (Waythomas and others, 2023). Accurately quantifying subglacial melt during these eruptions is difficult, but widespread melt can probably be assumed since even during a comparatively quiescent phase (July 2005) geothermal heat flux in Veniaminof's summit caldera was $\sim 19 \text{ W m}^{-2}$ (Welch and others, 2007), which is notably larger than the average geothermal flux in Alaska (Batir and others, 2015) and almost certainly sufficient to trigger widespread basal melt (Salamatin and others, 2000). The routing of any produced meltwater is unclear partly because of uncertainties about subglacial topography (Welch and others, 2007), though drainage beneath Cone Glacier has been postulated by Yount and others (1985) in relation to the 1983–84 volcanically active period. During this eruption a large supraglacial lake formed and developed an englacial drainage tunnel on the eastern side of the volcanic cone (Fig. 3c,d); while no evidence for a jökulhlaup was directly linked to the drainage of the lake, an entrance to the drainage tunnel was directed to the north suggesting drainage through or beneath Cone Glacier. Unfortunately, there are no discharge/run-off data available for Muddy River, which drains from the terminus of Cone Glacier. Gridded ($0.25^\circ \times 0.25^\circ$, 2 m above the surface elevation) ERA5 monthly reanalysis climate data (Hersbach and others, 2020) show that in the Veniaminof region mean annual temperature and annual precipitation have increased by $\sim 2.3^\circ\text{C}$ and $\sim 290 \text{ mm}$, respectively, since 1950. Over the 2017–2022 period, annual values ranged from $0.4\text{--}3.1^\circ\text{C}$ and $1556\text{--}1920 \text{ mm}$, but neither dataset shows an overall trend.

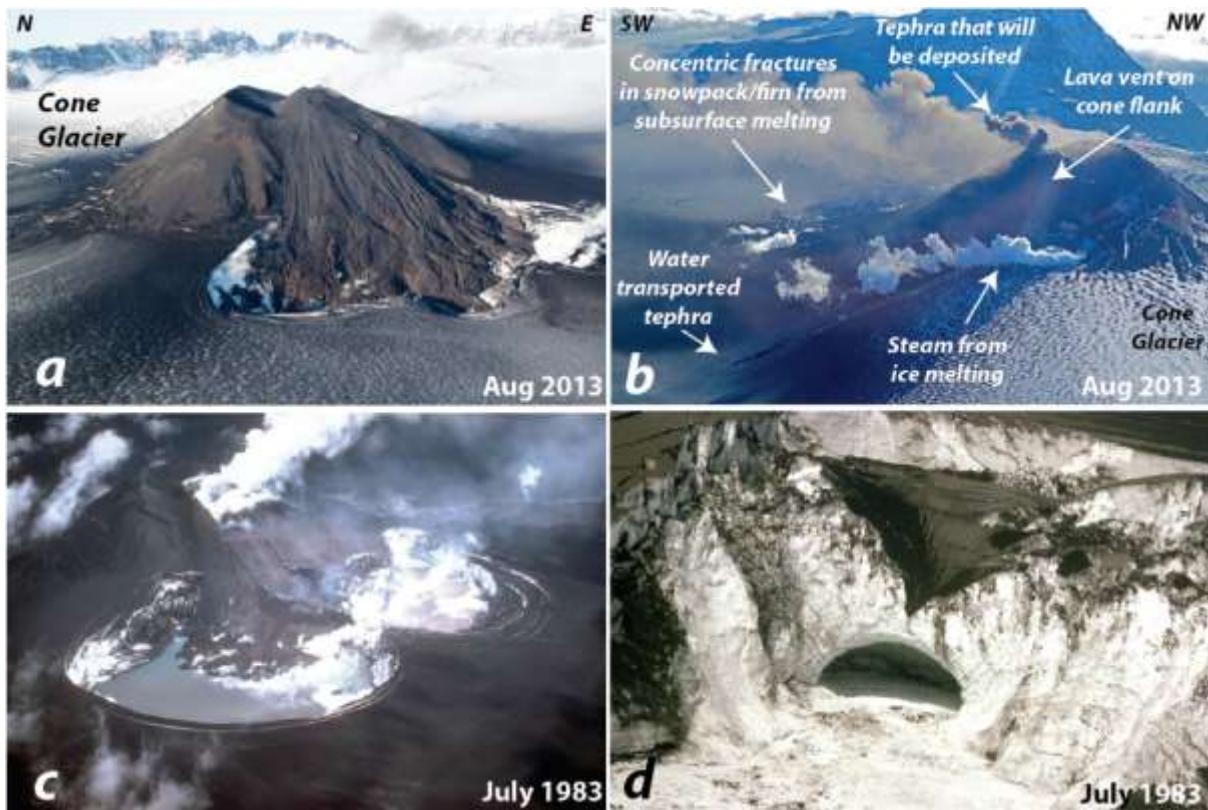


Fig. 3. Illustration of volcano-glacier interactions at Mount Veniaminof. (a) Image looking north at the southern flank of caldera cone showing the extent of the lava field developed during the 2013 eruption (B.E. image). (b) Image looking west at the eastern flank of the caldera cone showing the production of summit tephra, co-temporal eruption of a lava flow from the sub-summit flank vent, concentric snowpack/firn fractures, steam production from direct lava-ice contact, and supra-glacial water-deposited tephra from the 2013 eruption (B.E. image). (c) Oblique view of bilobate supra-glacial lakes formed during the 1983-84 eruption (image courtesy of M.E. Yount, Alaska Volcano Observatory). (d) Subsurface drainage cavern visible at the northeastern side of the supra-glacial lakes during the 1983-84 eruption (image courtesy of M.E. Yount, AVO).

2 METHODS

The surface velocity of Cone Glacier was measured from November 2017 to January 2022 at intervals determined by satellite image availability. This period covers volcanic eruptions in 2018 and 2021 and several months of quiescence before and after. Velocity was tracked using Sentinel-2 near-infrared band 8 satellite images and the Glacier Image Velocimetry (GIV) open-source toolkit (Van Wyk de Vries and Wickert, 2021a). The near-infrared band

was chosen as it provides good contrast between different features on glacier surfaces (Van Wyk de Vries and Wickert, 2021a). A total of 99 cloud-free images with a 10 m spatial resolution were used and were restricted to a single orbit to minimize georeferencing error and topographically correlated distortions which can manifest as apparent displacements unrelated to glacier motion (Kääb and others, 2016). GIV is optimized for producing monthly velocity data. Therefore different velocity values computed from image pairs that fall into a given month are averaged, but also time windows of more than one month are considered with a lower weight (Van Wyk de Vries and Wickert, 2021a). This strategy of not only using consecutive image pairs to reproduce velocity data is called temporal-oversampling (section 2.2.4 in Van Wyk de Vries and Wickert, 2021a). Test runs were performed in GIV, varying the temporal oversampling, minimum and maximum time intervals for image pairs, image filtering, and output resolutions (see Van Wyk de Vries and Wickert, 2021a, and the GIV user manual for full parameter descriptions - Van Wyk de Vries and Wickert, 2021b). Results with minimum noise were obtained by selecting an output resolution of 100 m, limiting the time separation for image pairs to a minimum of 21 days and a maximum of 1 year, and setting the time oversampling factor to 30 (Van Wyk de Vries and Wickert, 2021a, section "2.2.4. Non-consecutive images"). Calculating velocity in this way generally reduces noise but introduces a degree of smoothing to the velocity timeseries. This procedure of 'temporal oversampling' is described in detail in section "2.2.6 Temporal resampling" of Van Wyk de Vries and Wickert (2021a). Mean velocity fields (including respective standard deviations and error fields) were obtained as direct outputs from GIV. Monthly mean velocity here refers to the temporal mean of all individual velocity pairs. The North-South and East-West components are temporally averaged separately, and a new 'mean velocity' vector is computed from these. Our velocity maps have largest standard deviations, calculated from velocity maps with overlapping temporal baselines, along the edges of the glacier (see Figure S1), due to topographic shadows, reduced surface crevassing, and lower overall flow speeds (e.g. Heid and Kääb, 2012; Van Wyk de Vries and Wickert, 2021a). We estimate surface velocity error from 10 randomly selected 'stable ground' points (i.e., regions 'off-ice' which are not expected to be moving). Because standard deviation is greatest along the glacier's edges, velocity time-series were extracted for 10 points along a profile roughly following the glacier centreline (Fig. 2c). A time-series of mean monthly temperature and monthly precipitation for November 2017 to January 2022 was obtained from gridded ERA5

reanalysis data (Hersbach and others, 2020) for the $0.25^\circ \times 0.25^\circ$ grid square within which Cone Glacier sits.

3 RESULTS

For the entire November 2017 to January 2022 period, the surface velocity of Cone Glacier ranged from $\sim 10\text{--}20 \text{ m a}^{-1}$ near the terminus to $\sim 630 \text{ m a}^{-1}$ at the highly crevassed icefall region further up glacier (Fig. 2d). These annual velocities are similar to other Alaskan glaciers (Burgess and others, 2013) and the overall spatial pattern with high velocities in the icefall region and slower velocities near the terminus is common to glaciers globally (Hodge, 1974). We calculate a median velocity uncertainty of 10.02 m a^{-1} with an interquartile range of $8.09\text{--}13.11 \text{ m a}^{-1}$, suggesting that absolute velocities are more uncertain in slow-moving regions near the terminus but have good reliability ($<5\%$ error) in the fast moving icefall region. Generally, the velocity data show a seasonal cycle with fastest velocities in spring and early summer, but there is a contrast between the parts of the glacier near the terminus (points 1–3) which show little relation between air temperature and velocity and the upper parts of the glacier (points 4–10), including the icefall region, which show a clear relationship (compare points 2 and 7 in Fig. 4, and Figure S4 for all other points). It is also apparent that even in the icefall region, in 2018 the seasonal velocity cycle was disturbed by a period of elevated velocity that began ~ 10 months before the volcanic eruption and ended ~ 3 months before it. Glacier velocities were unseasonably low immediately before and during the eruption (September–December) and for at least 3 months after (into early spring 2019). In 2021, a period of elevated velocity began ~ 2 months before the eruption and continued until ~ 3 months after. Near the glacier terminus (Fig. 4a), velocity generally slowed from spring 2018 to early 2021. (Note: explanations for these trends are discussed in section 4.2.). A comparison between glacier velocity and precipitation revealed no clear or consistent relationships, either near the terminus or further up glacier (see Figure S4 and Figure S5). It is also worth noting that over our period of interest (i.e., November 2017 to January 2022) neither the thickness nor surface gradient of Cone Glacier (both of which can impact ice velocity, Cuffey and Paterson, 2010) varied significantly. For example, at point 2 (see Fig. 2c) between 2015 and 2019 (a period for which published glacier elevation change data are available) Cone Glacier thinned at a rate of $\sim 0.7 \text{ m a}^{-1}$ (Hugonnet and others, 2021).

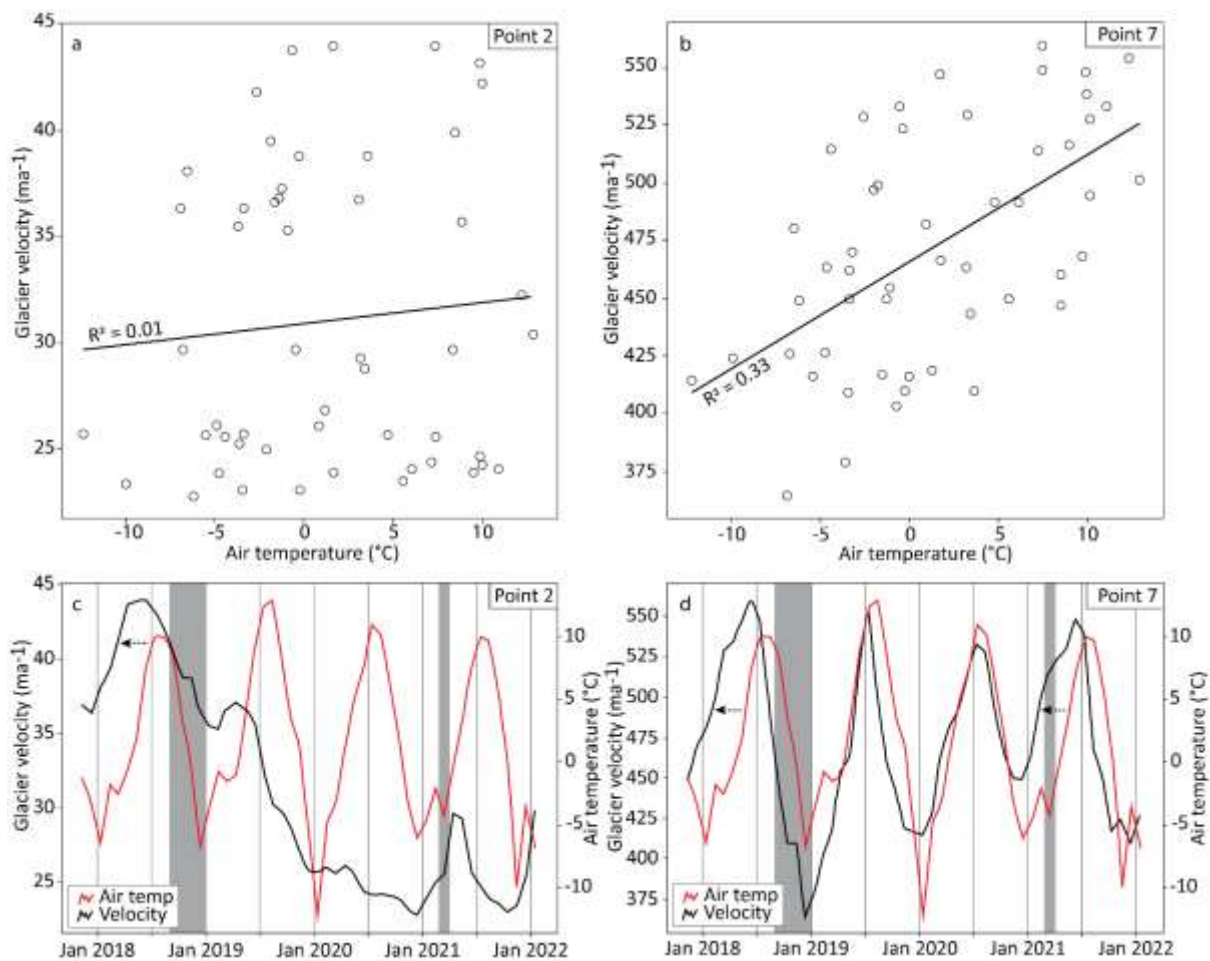


Fig. 4. Comparison of velocity data for points 2 and 7 (see point locations in Fig. 2c), reflecting near-terminus and icefall regions of Cone Glacier. (a) and (b) relationship between monthly velocity and air temperature. The solid line (and associated R^2 values) shows the relationships for the entire November 2017 to January 2022 period. (c) and (d) time-series of glacier velocity and air temperature. Dashed horizontal arrows illustrate offsets between periods of increased glacier velocity and periods of increased air temperatures. Greyed areas reflect eruptions at Veniaminof. The median velocity uncertainty is 10.02 m a^{-1} with an interquartile range of $8.09\text{--}13.11 \text{ m a}^{-1}$. Note this figure highlights only two points on the glacier surface but data for all 10 points are presented in Figure S2 and Figure S3.

4. DISCUSSION

4.1. Climatic impacts on Cone Glacier's velocity

Results from Cone Glacier show that during the November 2017 to January 2022 period, seasonal air temperature fluctuations partly regulated ice velocity, with fastest flow during

the warmest months of the year (and vice versa). This is particularly true in the icefall region (see Fig. 4b) away from the glacier's terminus. This seasonal cycle is characteristic of temperate glaciers since increased air temperatures and associated meltwater coincide with poorly evolved and hydraulically inefficient subglacial drainage systems in spring/early-summer, triggering an increase in basal water pressure, a reduction in friction, and a period of ice acceleration (Iken and Bindshadler, 1997; Rathmann and others, 2017). Velocity slows during late summer as subglacial drainage systems become more efficient, and meltwater is therefore evacuated without substantially increasing subglacial water pressures (Schoof, 2010; Sole and others, 2013; Larsen and others, 2023). Velocities slow further in winter when decreased air temperature reduces meltwater supply and ice deformation gradually closes subglacial channels (Schoof, 2010).

4.2. Volcanic impacts on Cone Glacier's velocity

In its icefall region (point 7, Fig. 4d), Cone Glacier's velocity shows a seasonal cycle (Section 4.1.). Despite this, in both 2018 and 2021 velocity is unseasonably high months prior to eruptions (Fig. 4d). We suggest that these unseasonably high glacier velocities are a result of widespread volcanic heating (including directly beneath Cone Glacier) which triggered ice melt and caused glacier acceleration when subglacial drainage was inefficient (e.g. in winter and early spring). In this circumstance, we don't necessarily envisage a subglacial flood, but widespread basal melt and associated lubrication. In 2018, velocities were unseasonably low immediately before, during and after the eruption (which occurred in September–December) most likely because the ongoing heating reinforced efficient subglacial drainage (by enlarging subglacial channels), with any volcanically triggered meltwater produced during and after the eruption therefore efficiently discharged from the bed with limited impact on velocity (Fig. 4d). By contrast, in 2021 the eruption occurred in March, when the drainage system would normally be inefficient. The pre-eruption heating here was likely able to allow a distributed subglacial drainage system to start to develop, but not sufficient to form a fully efficient system, perhaps due to comparatively limited volumes of subglacial meltwater during this short and small eruption (Waythomas and others, 2023). Thus, meltwater produced during and after the eruption may have drained inefficiently and contributed directly to glacier speed-up which continued for several months after the eruption (Fig. 4c). Here, we discuss these impacts for Cone Glacier's icefall region (point 7,

Fig. 4b) but they also apply (to varying degrees) to other regions of the glacier (see Figure S2), with contrast between the upper parts of the glacier (particularly points 5–10) where a seasonal velocity cycle is interrupted by short term periods of acceleration/deceleration, and the lower parts of the glacier (particularly points 1–3) where a seasonal velocity cycle is hard to discern and where a general reduction in velocity occurred from spring 2018 to late-2020/early-2021 (see Figure S2). In all, these results suggest that volcanic activity can have observable impacts on glacier surface velocities, but that the nature of this relationship is modulated by the intensity and temporal extent of the volcanic unrest and associated thermal activity, and its interference with the existing subglacial hydrological drainage. Unfortunately, at Mount Veniaminof there are no local geothermal heat flux measurements covering our period of interest but (as noted in Section 1.) even during a comparatively quiescent phase (July 2005) geothermal heat flux in the summit caldera was $\sim 19 \text{ W m}^{-2}$ (Welch and others, 2007) and almost certainly sufficient to trigger widespread basal melt (Salamatin and others, 2000).

4.3. Glacier speed-up and eruption forecasting

Data from Cone Glacier indicate that periods of elevated surface velocity can precede volcanic eruptions by several months. A similar pattern was identified at Glaciar Amarillo, Chile, where glacier acceleration preceded the May 2008 eruption of Volcán Chaitén by a few months (Rivera and others, 2012). As with Cone Glacier, the speed-up of Glaciar Amarillo is presumed to reflect increased ice melt, elevated subglacial water pressure, and enhanced basal sliding triggered by thermal unrest prior to the eruption (Rivera and others, 2012). Thus, both Cone Glacier and Glaciar Amarillo potentially indicate that glacier speed-up can be an early indicator of volcanic unrest. These are the only two glaciers globally where pre-eruption glacier speeds have been specifically investigated, yet neither is ideal for investigating volcanic impacts on glacier velocity. At Cone Glacier, the eruptive vent is not subglacial but protrudes above the surrounding ice (Waythomas and others, 2023), while Glaciar Amarillo is located $\sim 16 \text{ km}$ east of Volcán Chaitén, the site of the eruption. This suggests that several other glaciers might show even stronger links between volcanic activity and glacier speed (Mallalieu and others, 2024), and with direct monitoring of discharge from

glacier-fed streams combined with continued analysis of glacier mass balance these links might become better understood.

5 CONCLUSIONS

In this study we demonstrate that Cone Glacier (Alaska) experienced unseasonably fast flow velocities months prior to eruptions of Mount Veniaminof (on which the glacier sits) in 2018 and 2021, with unseasonably slow velocities immediately before, during and after the 2018 eruption. We suggest that these impacts on glacier velocity were caused by widespread volcanic heating (including directly beneath Cone Glacier) which triggered glacier melt and associated changes in subglacial water pressures (but without necessarily generating a subglacial flood) (for detail, see Section 4.2). Furthermore, the nature and magnitude of changes in glacier velocity may have been modulated by the state of the subglacial drainage system during the period of enhanced heating. Elevated pre-eruption ice flow velocities were also observed at Glaciar Amarillo, Chile, before the May 2008 eruption of Volcán Chaitén (Rivera and others, 2012). In combination, these examples indicate that glacier speed-up might be an early indicator of volcanic unrest. This has potentially important implications for volcano monitoring and eruption forecasting at a global scale, since glacier velocity is now routinely and cost-effectively monitored and ~250 of the world's active volcanoes either have glaciers on their flanks or within a 5 km radius (Fig. 1) (Edwards and others, 2020). This equates to more than 2500 glaciers globally that have the potential to act as indicators of imminent eruptions.

ACKNOWLEDGMENTS

This research was funded by Leverhulme Trust Research Project Grant: RPG-2019-093. We thank the reviewers and handling editor, and are grateful to several members of the Alaska Volcano Observatory (AVO) for fruitful discussions on this manuscript during a visit to Fairbanks in December 2023.

AUTHOR CONTRIBUTIONS

Michael Martin conducted the research on which this paper is based. Iestyn Barr led the writing. Iestyn Barr, Benjamin Edwards, Matteo Spagnolo, and Elias Symeonakis devised the project and contributed to manuscript preparation. Kathryn Adamson and Joseph Mallalieu

contributed to the study design and manuscript preparation. Donal Mullan led climate-related aspects of the study and contributed to manuscript preparation. Maximillian Van Wyk de Vries helped with glacier velocity measurements and contributed to manuscript preparation.

DATA AVAILABILITY

Glacier velocity and climate data presented in this study are available through Zenodo via <https://doi.org/10.5281/zenodo.7919494>

REFERENCES

- Barr ID, Lynch CM, Mullan D, De Siena L and Spagnolo M (2018) Volcanic impacts on modern glaciers: A global synthesis. *Earth Science Reviews*, **182**, 186–203 (doi:[10.1016/j.earscirev.2018.04.008](https://doi.org/10.1016/j.earscirev.2018.04.008))
- Burgess EW, Forster RR and Larsen CF (2013) Flow velocities of Alaskan glaciers. *Nature communications*, **4**(2146) (doi:[10.1038/ncomms3146](https://doi.org/10.1038/ncomms3146))
- Caricchi L, Townsend M, Rivalta E and Namiki A (2021) The build-up and triggers of volcanic eruptions. *Nature Reviews Earth & Environment*, **2**, 458–476 (doi:[10.1038/s43017-021-00174-8](https://doi.org/10.1038/s43017-021-00174-8))
- Coppola D and 29 others (2020) Thermal remote sensing for global volcano monitoring: experiences from the MIROVA system. *Frontiers in Earth Science*, **7**(362) (doi:[10.3389/feart.2019.00362](https://doi.org/10.3389/feart.2019.00362))
- Cuffey KM and Paterson WSB (2010) *The Physics of Glaciers*. 4th Edn. Butterworth-Heinemann, Oxford, ISBN 9780123694614
- Dietterich H, Loewen M, Orr T Laker, M and Hults C (2021) *Digital elevation models and orthoimagery from the 2018 eruption of Veniaminof, Alaska*. USGS Volcano Science Center Data Release (doi:[10.5066/P9VEFFRX](https://doi.org/10.5066/P9VEFFRX))
- Edwards B, Kochtitzky W and Battersby S (2020) Global mapping of future Glaciovolcanism. *Global and Planetary Change*, **195**, 103356 (doi:[10.1016/j.gloplacha.2020.103356](https://doi.org/10.1016/j.gloplacha.2020.103356))
- Girona T, Realmuto V and Lundgren P (2021) Large-scale thermal unrest of volcanoes for years prior to eruption. *Nature Geoscience*, **14**, 238–241 (doi:[10.1038/s41561-021-00705-4](https://doi.org/10.1038/s41561-021-00705-4))

- Global Volcanism Program (2022) *Volcanoes of the World* (v.5.0.1; 19 Dec 2022) [Database]. Distributed by Smithsonian Institution, compiled by Venzke E (doi:[10.5479/si.GVP.VOTW5-2022.5.0](https://doi.org/10.5479/si.GVP.VOTW5-2022.5.0))
- Heid T and Käab A (2012) Evaluation of existing image matching methods for deriving glacier surface displacements globally from optical satellite imagery. *Remote Sensing of Environment*, **118**, 339–355 (doi:[10.1016/j.rse.2011.11.024](https://doi.org/10.1016/j.rse.2011.11.024))
- Hersbach H, Bell B, Berrisford P, Hirahara S, Horányi A, Muñoz-Sabater J, Nicolas J, Peubey C, Radu, R, Schepers D and Simmons A (2020) The ERA5 global reanalysis. *Quarterly Journal of the Royal Meteorological Society*, **146**(730), 1999–2049 (doi:[10.1002/qj.3803](https://doi.org/10.1002/qj.3803))
- Hodge SM (1974) Variations in the sliding of a temperate glacier. *Journal of Glaciology*, **13**(69), 349–369 (doi:[10.3189/S0022143000023157](https://doi.org/10.3189/S0022143000023157))
- Howcutt S, Spagnolo M, Rea BR, Jaszewski J, Barr I, Coppola D, De Siena L, Girona T, Gomez-Patron A, Mullan D and Pritchard ME (2023) Icy thermometers: can glaciers be used for measuring and monitoring volcanic heat? *Geology*, **51**(12), 1143–1147 (doi:[10.1130/G51411.1](https://doi.org/10.1130/G51411.1))
- Hugonnet R and 10 others (2021) Accelerated global glacier mass loss in the early twenty-first century. *Nature*, **592**(7856), 726–731 (doi:[10.1038/s41586-021-03436-z](https://doi.org/10.1038/s41586-021-03436-z))
- Iken A, and Truffe M (1997) The relationship between subglacial water pressure and velocity of Findelengletscher, Switzerland, during its advance and retreat. *Journal of Glaciology*, **43**(144), 328–338 (doi:[10.3189/S0022143000003282](https://doi.org/10.3189/S0022143000003282))
- Julio-Miranda P, Delgado-Granados H, Huggel C and Käab, A (2008) Impact of the eruptive activity on glacier evolution at Popocatepetl Volcano (México) during 1994–2004. *Journal of Volcanology and Geothermal Research*, **170**, 86–98 (doi:[10.1016/j.jvolgeores.2007.09.011](https://doi.org/10.1016/j.jvolgeores.2007.09.011))
- Käab A, Winsvold SH, Altena B, Nuth C, Nagler T and Wuite J (2016) Glacier remote sensing using Sentinel-2. part I: Radiometric and geometric performance, and application to ice velocity. *Remote sensing*, **8**(7), 598 (doi:[10.3390/rs8070598](https://doi.org/10.3390/rs8070598))
- Larsen SH, Ahlstrøm AP, Karlsson NB, Kusk A, Langen PL and Hvidberg CS (2023) Outlet glacier flow response to surface melt: based on analysis of a high-resolution satellite data set. *Journal of Glaciology*, **69**(276), 1047–1055 (doi:[10.1017/jog.2022.124](https://doi.org/10.1017/jog.2022.124))
- Loewen MW, Dietterich HR, Graham N and Izbekov P (2021) Evolution in eruptive style of the 2018 eruption of Veniaminof volcano, Alaska, reflected in groundmass textures and remote sensing. *Bulletin of Volcanology*, **83**(72) (doi:[10.1007/s00445-021-01489-6](https://doi.org/10.1007/s00445-021-01489-6))

- Magnússon E, Björnsson H, Rott H and Pálsson F (2010) Reduced glacier sliding caused by persistent drainage from a subglacial lake. *The Cryosphere*, **4**(1), 13–20 ([doi:10.5194/tc-4-13-2010](https://doi.org/10.5194/tc-4-13-2010))
- Mair D, Willis I, Fischer UH, Hubbard B, Nienow P and Hubbard A (2003) Hydrological controls on patterns of surface, internal and basal motion during three “spring events”: Haut Glacier d’Arolla, Switzerland. *Journal of Glaciology*, **49**(167), 555–567 ([doi:10.3189/172756503781830467](https://doi.org/10.3189/172756503781830467))
- Mallalieu J, Barr ID, Spagnolo M, Mullan DJ, Symeonakis E, Edwards B and Martin MD (2024) Proximity to active volcanoes enhances glacier velocity. *Communications Earth & Environment*, **5**(679) ([doi:10.1038/s43247-024-01826-5](https://doi.org/10.1038/s43247-024-01826-5)).
- Martin MD, Barr I, Edwards B, Spagnolo M, Vajedian S and Symeonakis E (2021) Assessing the use of optical satellite images to detect volcanic impacts on glacier surface morphology. *Remote Sensing*, **13**(17), 3453 ([doi:10.3390/rs13173453](https://doi.org/10.3390/rs13173453))
- Millan R, Mougintot J, Rabatel A and Morlighem M (2022), Ice velocity and thickness of the world’s glaciers. *Nature Geoscience*, **15**, 124–129 ([doi:10.1038/s41561-021-00885-z](https://doi.org/10.1038/s41561-021-00885-z))
- Phillipson G, Sobradelo R and Gottsmann J (2013) Global volcanic unrest in the 21st century: An analysis of the first decade. *Journal of Volcanology and Geothermal Research*, **264**, 183–196 ([doi:10.1016/j.jvolgeores.2013.08.004](https://doi.org/10.1016/j.jvolgeores.2013.08.004))
- Rathmann NM, Hvidberg CS, Solgaard AM, Grinsted A, Gudmundsson GH, Langen PL, Nielsen KP and Kusk A (2017) Highly temporally resolved response to seasonal surface melt of the Zachariae and 79N outlet glaciers in northeast Greenland. *Geophysical Research Letters*, **44**, 9805–9814 ([doi:10.1002/2017GL074368](https://doi.org/10.1002/2017GL074368))
- Reath K, Pritchard ME, Moruzzi S, Alcott A, Coppola D and Pieri D (2019) The AVTOD (ASTER Volcanic Thermal Output Database) Latin America archive. *Journal of Volcanology and Geothermal Research*, **376**, 62–74 ([doi:10.1016/j.jvolgeores.2019.03.019](https://doi.org/10.1016/j.jvolgeores.2019.03.019))
- Reinthalder J, Paul F, Delgado Granados H, Rivera A and Huggel C (2019) Area changes of glaciers on active volcanoes in Latin America between 1986 and 2015 observed from multi-temporal satellite imagery. *Journal of Glaciology*, **65**(252), 542–556 ([doi:10.1017/jog.2019.30](https://doi.org/10.1017/jog.2019.30))
- RGI 7.0 Consortium (2023) *Randolph Glacier Inventory - A Dataset of Global Glacier Outlines*, Version 7.0. Boulder, Colorado USA. NSIDC: National Snow and Ice Data Center ([doi:10.5067/f6jmovy5navz](https://doi.org/10.5067/f6jmovy5navz)). Online access: <https://doi.org/10.5067/f6jmovy5navz>

- Rivera A, Bown F, Carrión D and Zenteno P (2012) Glacier responses to recent volcanic activity in Southern Chile. *Environmental Research Letters*, **7**, 014036 (doi:[10.1088/1748-9326/7/1/014036](https://doi.org/10.1088/1748-9326/7/1/014036))
- Salamatin AN, Murav'yev YD, Shiraiwa T and Matsuoka K (2000) Modelling dynamics of glaciers in volcanic craters. *Journal of Glaciology*, **46**(153), 177–187 (doi:[10.3189/172756500781832990](https://doi.org/10.3189/172756500781832990))
- Schoof C (2010) Ice-sheet acceleration driven by melt supply variability. *Nature*, **468**(7325), 803–806 (doi:[10.1038/nature09618](https://doi.org/10.1038/nature09618))
- Sole A, Nienow P, Bartholomew I, Mair D, Cowton T, Tedstone A and King MA (2013) Winter motion mediates dynamic response of the Greenland Ice Sheet to warmer summers. *Geophysical Research Letters*, **40**, 3940–3944 (doi:[10.1002/grl.50764](https://doi.org/10.1002/grl.50764))
- Sparks RSJ (2003) Forecasting volcanic eruptions. *Earth and Planetary Science Letters*, **210**, 1–15 (doi:[10.1016/S0012-821X\(03\)00124-9](https://doi.org/10.1016/S0012-821X(03)00124-9))
- Sparks RSJ, Biggs J and Neuberg JW (2012) Monitoring volcanoes. *Science*, **335**(6074), 1310–1311 (doi:[10.1126/science.121948](https://doi.org/10.1126/science.121948))
- Van Wyk de Vries M and Wickert AD (2021a) Glacier Image Velocimetry: an open-source toolbox for easy and rapid calculation of high-resolution glacier velocity fields. *The Cryosphere*, **15**, 2115–2132 (doi:[10.5194/tc-15-2115-2021](https://doi.org/10.5194/tc-15-2115-2021))
- Van Wyk de Vries M and Wickert AD (2021b) *Glacier Image Velocity (GIV) user manual* (doi:[10.5194/tc-15-2115-2021-supplement](https://doi.org/10.5194/tc-15-2115-2021-supplement)).
- Waythomas C (2021) Simultaneous effusive and explosive cinder cone eruptions at Veniaminof Volcano, Alaska. *Volcanica*, **4**(2), 295–307 (doi:[10.30909/vol.04.02.295307](https://doi.org/10.30909/vol.04.02.295307))
- Waythomas CF, Edwards BR, Miller TP and McGimsey RG (2023) Lava-ice interactions during historical eruptions of Veniaminof Volcano, Alaska and the potential for meltwater floods and lahars. *Natural Hazards*, **115**(1), 73–106 (doi:[10.1007/s11069-022-05523-4](https://doi.org/10.1007/s11069-022-05523-4))
- Welch BC, Dwyer K, Helgen M, Waythomas CF and Jacobel RW (2007) Geophysical survey of the intra-caldera icefield of Mt Veniaminof, Alaska. *Annals of Glaciology*, **45**, 58–65 (doi:[10.3189/172756407782282381](https://doi.org/10.3189/172756407782282381))
- Yount ME, Miller TP, Emanuel RP and Wilson FH (1985) *Eruption in an ice-filled caldera, Mount Veniaminof, Alaska Peninsula: A section in The United States Geological Survey in Alaska: Accomplishments during 1983*. US Geological Survey Circular, **945** 59–60 (doi:[10.3133/70180231](https://doi.org/10.3133/70180231))