

PUBLISHED FOR THE SOCIETY BY SLACK INCORPORATED

INFECTION CONTROL AND HOSPITAL EPIDEMIOLOGYTM

EDITORIAL

Of Models and Methods: Our Analytic Armamentarium Applied to Methicillin-Resistant *Staphylococcus aureus*

ELI N. PERENCEVICH, MD, MS; DAVID M. HARTLEY, PHD

594

ORIGINAL ARTICLES

Use of Stochastic Epidemic Modeling to Quantify Transmission Rates of Colonization With Methicillin-Resistant *Staphylococcus aureus* in an Intensive Care Unit

MARIE FORRESTER, B COMM, B ARTS; ANTHONY N. PETTIT, PHD

598

Modeling Transmission of Methicillin-Resistant *Staphylococcus aureus* Among Patients Admitted to a Hospital

JANET RABOUD, PHD; REFIK SASKIN, MSc; ANDREW SIMOR, MD; MARK LOEB, MD, MSc; KAREN GREEN, RN; DON E. LOW, MD; ALLISON MCGEER, MD, MSc

607

Eradication of Methicillin-Resistant *Staphylococcus aureus* From a Neonatal Intensive Care Unit by Active Surveillance and Aggressive Infection Control Measures

JAD KHOURY, MD; MARILYN JONES, RN, CIC; AUTUMN GRIM, MPH; WM. MICHAEL DUNNE, JR., PHD; VICKY FRASER, MD

616

Staphylococcus aureus Colonization and the Risk of Infection in Critically Ill Patients

ADAM KEENE, MD; PETER VAVAGIAKIS, MS; MEI-HO LEE, BS; KATHRYN FINNERTY, MD; DEBORAH NICOLLS, MD; CHRISTIAN CESPEDES, MS; BIANCA QUAGLIARELLO, MS; MARY ANN CHIASSON, DRPH; DAVID CHONG, MD; FRANKLIN D. LOWY, MD

622

Methicillin-Resistant *Staphylococcus aureus* Carriage Among Patients After Hospital Discharge

MENNO R. VRIENS, MD, PHD; HETTY E. M. BLOK, MSc; ADA C. M. GIGENGACK-BAARS, BSc; ELLEN M. MASCINI, MD, PHD; CHRIS VAN DER WERKEN, MD, PHD; JAN VERHOEF, MD, PHD; ANNET TROELSTRA, MD, PHD

629

Importance of Control Group Selection for Evaluating Antimicrobial Use as a Risk Factor for Methicillin-Resistant *Staphylococcus aureus* Bacteremia

ERIKA J. ERNST, PHARM D; GEORGE RALEY, PHARM D; LOREEN A. HERWALDT, MD; DANIEL J. DIEKEMA, MD

634

Use of Strain Typing Data to Estimate Bacterial Transmission Rates in Healthcare Settings

BRIAN R. JACKSON, MD, MS; ALUN THOMAS, PHD; KAREN C. CARROLL, MD; FREDERICK R. ADLER, PHD; MATTHEW H. SAMORE, MD

638

Control of Vancomycin-Resistant Enterococci in the Neonatal Intensive Care Unit

NALINI SINGH, MD, MPH; MARIE-MICHÈLE LÉGER, PA-C, MPH; JOYCE CAMPBELL, RN, MS; BILLIE SHORT, MD; JOSEPH M. CAMPOS, PHD

646

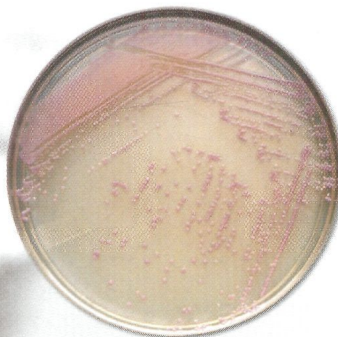
Continued inside.

BBL™ CHROMagar™ MRSA

Exclusive Formulation Available Only from BD



For Rapid Recovery Trust BBL CHROMagar MRSA



BBL CHROMagar MRSA is designed for the qualitative, direct detection of nasal colonization by MRSA. The introduction of BBL CHROMagar MRSA provides laboratorians with many benefits compared to traditional MRSA screening algorithms.

- Rapid results—direct detection and identification of most MRSA in as little as 24 hours without confirmatory testing¹
- Greater recovery—8% greater recovery than traditional screening algorithms
- 96% agreement of MRSA and 97% agreement of MSSA compared to *mecA* PCR²

Cat. No.	Description	Unit
215084	BBL™ CHROMagar™ MRSA	20 Plates

For more information contact your local BD Sales Representative or BD Customer Service at 800-675-0908.



Helping all people
live healthy lives

¹ BD Data on File, mauve colonies at 48 hours require a confirmatory coagulase test.

² BD Data on File.

CHROMagar is a trademark of Dr. A. Rambach. BD, BD Logo and BBL are trademarks of Becton, Dickinson and Company. ©2005 BD.

BD Diagnostics

800.638.8663

www.bd.com/ds

INFECTION CONTROL AND HOSPITAL EPIDEMIOLOGY™

CONTENTS

Continued from cover

ORIGINAL ARTICLES

- Reduction in Nosocomial Transmission of Drug-Resistant Bacteria After Introduction of an Alcohol-Based Handrub**
FRED M. GORDIN, MD; MAUREEN E. SCHULTZ, RN, MSN; RUTH A. HUBER, RN, MS; JANET A. GILL, RN, BSN 650
-
- Risk Factors for Nosocomial Infective Endocarditis in Patients With Methicillin-Resistant *Staphylococcus aureus* Bacteremia**
RON-BIN HSU, MD 654
-
- Catheter-Related Vancomycin-Resistant *Enterococcus faecium* Bacteremia: Clinical and Molecular Epidemiology**
ISSAM I. RAAD, MD; HEND A. HANNA, MD, MPH; MAHA BOKTOUR, MD; NOEL JABBOUR, BS; RAY Y. HACHEM, MD; RABIH O. DAROUICHE, MD 658
-
- Mupirocin for Controlling Methicillin-Resistant *Staphylococcus aureus*: Lessons From a Decade of Use at a University Hospital**
ADRIANA M. VIVONI, PHD; KÁTIA R. N. SANTOS, PHD; MÁRCIA P. DE-OLIVEIRA, MD; MARCIA GIAMBIAGI-DEMARVAL, PHD; ADRIANA L. P. FERREIRA, BSC; LEE W. RILEY, MD; BEATRIZ M. MOREIRA, MD 662

Full-text articles available online at ICHEJournal.com

THE PUBLICATION OF ADVERTISING IN THE JOURNAL DOES NOT CONSTITUTE ANY GUARANTEE OR ENDORSEMENT BY THE SOCIETY FOR HEALTHCARE EPIDEMIOLOGY OF AMERICA OR SLACK INCORPORATED OF THE ADVERTISED PRODUCT OR SERVICE OR OF CLAIMS MADE BY THE ADVERTISER. THE PUBLICATION OF ARTICLES AND OTHER EDITORIAL MATERIAL IN THE JOURNAL DOES NOT NECESSARILY REPRESENT THE POLICY RECOMMENDATIONS OR ENDORSEMENT BY THE SOCIETY.

PUBLISHER: Infection Control and Hospital Epidemiology (ISSN-0195-9417, Canadian GST#129780466) is published exclusively by SLACK Incorporated 12 times a year. Address: 6900 Grove Road, Thorofare, NJ 08086. Telephone: (856) 848-1000.

SHEA: 66 Canal Center Plaza, Suite 600, Alexandria, VA 22314; telephone, 703-299-0200; fax, 703-299-0204; e-mail address, info@shea-online.org.

COPYRIGHT 2005 The Society for Healthcare Epidemiology of America, Inc., and SLACK Incorporated. All rights reserved. No part of this publication may be reproduced without written permission from the publisher. Printed in the USA.

SUBSCRIPTIONS: Requests should be addressed to the publisher. Subscription rates in the United States and possessions: Individual: One year-\$149.00; Two years-\$253.00; Three years-\$335.00; Institutional: One year-\$279.00; Two years-\$474.00; Three years-\$628.00. Fellows: \$54.50 per year with proof of training status. Canada: add 7% Goods & Services tax; Overseas: add \$49.00 each year for delivery by air service. Single copies of current issues may be obtained for \$24.00.

INSTRUCTIONS TO AUTHORS: Authors may submit electronic versions of their manuscripts prepared in accordance with the 2004 revision of the "Uniform Requirements for Manuscripts Submitted to Biomedical Journals." An electronic version is available at www.icmje.org. Submit to RapidReview.com. All submissions must be accompanied by copyright form(s) signed by all authors.

REPRINTS: All requests to reprint or use material published herein should be addressed to John Kain, SLACK Incorporated, 6900 Grove Road, Thorofare, NJ 08086. For reprint orders and prices, contact Rebecca Fogarty at (856) 848-1000. Authorization to photocopy items for internal or personal use, or the internal or personal use of specific clients, is granted by SLACK Incorporated, provided that the base fee of \$1.00 per copy, plus \$2.00 per page is paid directly to Copyright Clearance Center, 222 Rosewood Drive, Danvers, MA 01923; phone (978) 750-8400. This consent does not extend to other kinds of copying, such as for general distribution, resale, advertising and promotional purposes, or for creating new collective works.

CHANGE OF ADDRESS: Notice should be sent to the publisher 6 weeks in advance of effective date. Include old and new addresses with zip codes. The publisher cannot accept responsibility for undelivered copies. Periodicals postage paid at Thorofare, New Jersey 08086-9447 and at additional mailing offices. POSTMASTER: Send address changes to SLACK Incorporated, 6900 Grove Road, Thorofare, NJ 08086.

INFECTION CONTROL AND HOSPITAL EPIDEMIOLOGY is listed in Index Medicus, Current Contents-Clinical Practice, Hospital Literature Index, Cumulative Index to Nursing & Allied Health Literature, Nursing Abstracts, Laboratory Performance Information Exchange System, and RNdex Top 100.

INFECTION CONTROL AND HOSPITAL EPIDEMIOLOGY™

EDITORIAL ADVISORY BOARD

EDITORIAL OFFICE

SLACK Incorporated
6900 Grove Road
Thorofare, NJ 08086
(856) 848-1000; (856) 848-6091 (FAX)
E-mail: iche@slackinc.com

EDITOR

William R. Jarvis, MD

DEPUTY EDITOR

David P. Calfee, MD, MS

ASSISTANT EDITOR

Preeti N. Malani, MD, MSJ

SENIOR ASSOCIATE EDITORS

C. Glen Mayhall, MD
Gina Pugliese, RN, MS
William Schaffner, MD

ASSOCIATE EDITORS

Donald A. Goldmann, MD
Didier Pittet, MD, MS
Andreas Widmer, MD, MS

SECTION EDITORS

Beyond Infection Control: The New Hospital Epidemiology

Wing Hong Seto, MD
Hong Kong

Disinfection and Sterilization

William A. Rutala, PhD, MPH
Chapel Hill, North Carolina

From the Laboratory

Marcus Zervos, MD
Royal Oak, Michigan

Infections in Immunocompromised Patients

Kent Sepkowitz, MD
New York City, New York

Information Management

John A. Sellick, DO
Amherst, New York

Issues in Surgery

James T. Lee, MD, PhD
St. Paul, Minnesota

Medical News

Gina Pugliese, RN, MS
Chicago, Illinois
Martin S. Favero, PhD
Irvine, California

Practical Healthcare Epidemiology

Loreen A. Herwaldt, MD
Iowa City, Iowa

Statistics for Hospital Epidemiology

David Birnbaum, PhD, MPH
Sidney, British Columbia, Canada

Topics in Long-Term Care

Philip W. Smith, MD
Omaha, Nebraska

Topics in Occupational Medicine

David Weber, MD, MPH
Chapel Hill, North Carolina

- J. Wesley Alexander, MD
Miriam Alter, PhD
Hilary Babcock, MD
Elise M. Beltrami, MD, MPH
Marc J. M. Bonten, MD, PhD
John M. Boyce, MD
Christian Brun-Buisson, MD
John P. Burke, MD
Yehuda Carmeli, MD, MPH
Carol Chenoweth, MD
Sara E. Cosgrove, MD, MS
Donald E. Craven, MD
Erika D'Agata, MD, MPH
Franz Daschner, MD
Patch Dellinger, MD
Charles E. Edmiston, Jr., PhD
Theodore C. Eickhoff, MD
Jean Yves Fagon, MD, MPH
Mark Farrington, MA, FRCPath
Richard A. Garibaldi, MD
Petra Gastmeier, MD
Dale N. Gerding, MD
Stephan Harbarth, MD, MS
Anthony D. Harris, MD, MPH
David K. Henderson, MD
Peter N.R. Heselstine, MD
Karen Hoffmann, RN, CIC, MS
Janine Jagger, MPH, PhD
John A. Jernigan, MD, MS
Jacob L. Kool, MD, PhD
Ebbing Lautenbach, MD, MPH
Allison McGeer, MD
John E. McGowan, Jr., MD
Leonard A. Mermel, DO, ScM
Robert R. Muder, MD
Carlene A. Muto, MD, MS
Joseph M. Mylotte, MD, CIC
Lindsay Nicolle, MD
Juhani Ojajarvi, MD
Michael T. Osterholm, PhD, MPH
David L. Paterson, MBBS, FRACP
Jan Evans Patterson, MD
Sindy M. Paul, MD
David A. Pegues, MD
Michael A. Pfaller, MD
Samuel Ponce de Leon, MD, MSc
Issam Raad, MD
Jordi Rello, MD, PhD
Manfred L. Rotter, MD, DipBact
Henning Rüden, MD
Lisa Saiman, MD, MPH
Syed A. Sattar, PhD
William E. Scheckler, MD
Lynne M. Sehulster, PhD
Andrew E. Simor, MD
Denis W. Spelman, FRACP
V. Susan Springthorpe, BSc, MSc
Jeffrey R. Starke, MD
Janet E. Stout, PhD
Clyde Thornsberry, PhD
Jerome Tokars, MD, MPH
Timothy R. Townsend, MD
Antoni Trilla, MD, PhD
Robert A. Weinstein, MD
Sergio B. Wey, MD
Cincinnati, Ohio
Atlanta, Georgia
St. Louis, Missouri
Decatur, Georgia
Utrecht, The Netherlands
New Haven, Connecticut
Creteil, France
Salt Lake City, Utah
Tel Aviv, Israel
Ann Arbor, Michigan
Baltimore, Maryland
Burlington, Massachusetts
Boston, Massachusetts
Freiburg, Germany
Seattle, Washington
Milwaukee, Wisconsin
Denver, Colorado
Paris, France
Cambridge, England, United Kingdom
Farmington, Connecticut
Hanover, Germany
Hines, Illinois
Geneva, Switzerland
Baltimore, Maryland
Bethesda, Maryland
San Juan, California
Chapel Hill, North Carolina
Charlottesville, Virginia
Atlanta, Georgia
Fort Collins, Colorado
Philadelphia, Pennsylvania
Toronto, Ontario, Canada
Atlanta, Georgia
Providence, Rhode Island
Pittsburgh, Pennsylvania
Pittsburgh, Pennsylvania
Buffalo, New York
Winnepeg, Manitoba, Canada
Helsinki, Finland
Minneapolis, Minnesota
Pittsburgh, Pennsylvania
San Antonio, Texas
Yardley, Pennsylvania
Los Angeles, California
Iowa City, Iowa
Mexico City, Mexico
Houston, Texas
Tarragona, Spain
Vienna, Austria
Berlin, Germany
New York, New York
Ottawa, Ontario, Canada
Madison, Wisconsin
Atlanta, Georgia
Toronto, Ontario, Canada
Melbourne, Victoria, Australia
Ottawa, Ontario, Canada
Houston, Texas
Pittsburgh, Pennsylvania
Franklin, Tennessee
Atlanta, Georgia
Baltimore, Maryland
Barcelona, Spain
Chicago, Illinois
São Paulo, Brazil

CORPORATE

President

Peter Slack

Executive Vice President

Richard N. Roash

Vice President, Publishing Operations

John C. Carter

Vice President, U.S. Sales

Wayne McCourt

Vice President, International Sales

William Harley

Vice President, Finance

Darrell Blood

Vice President, Information Services

Jon Schafer

Creative Director

Linda Baker

EDITORIAL

Editorial Director

Jennifer A. Kilpatrick, ELS

Executive Editor

Shirley P. Strunk, ELS

Associate Editor

Jaime Underwood

SALES

Director of Association Services

Kathy Huntley

Sales Director,

Recruitment/Classified Division

Kristy Irwin

Advertising Sales Representative

Scotty Turner

Classified/Recruitment Sales

Elizabeth Roash

Director of Reprint Sales

John Kain

PRODUCTION

Production Director

Christine Main

Advertising/Production Coordinator

Joanne Patterson

Circulation Director

Lester J. Robeson, CCCP

SLACK
INCORPORATED

6900 Grove Road
Thorofare, NJ 08086-9447
(856) 848-1000



Expert Test Services for Diagnosis of Invasive Fungal Infection

Beacon Diagnostics™ Laboratory

Beacon Diagnostics Laboratory is a fully CLIA-certified reference laboratory specializing in (1,3)- β -D-glucan analysis as an aid to diagnosing Invasive Fungal Infections (IFI).

The Fungitell™ Assay

The Fungitell assay detects (1,3)- β -D-Glucan, a fungal cell wall component that is shed into the tissues and bloodstream of patients suffering from invasive fungal infection.^{1,2} Most medically important fungal pathogens contain (1,3)- β -D-Glucan and are thus detectable using the Fungitell assay.* Beacon Diagnostics Laboratory performs (1,3)- β -D-Glucan testing using the Fungitell assay.

Monitoring serum glucan for evidence of elevated and rising levels provides a convenient marker for IFI. Levels greater than or equal to 80 pg/mL, in at risk patients, are considered positive. Because a fungal infection is a dynamic process, repeat testing (typically 2-3 times per week) improves sensitivity.

*Fungi that do not synthesize (1,3)- β -D-Glucan, such as Zygomycetes, will not generate positive results with this assay.

1 Odabasi, et al. (2004) *Clinical Infectious Diseases*. 39:199-205.

2. Pazos, et al. (2005) *Journal of Clinical Microbiology*. 43:299-305



Submitting Samples

Sample submission forms can be obtained by calling (800) 568-0058 or by visiting our website at www.BeaconDiagnostics.com.

Turn-Around Time

All samples are analyzed and reported within 48 hours of receipt at our laboratory.

For More Information Please Contact Us at:

Telephone

(800) 568-0058 or (508) 540-3054

Email

info@beacondiagnostics.com

Website

www.beacondiagnostics.com



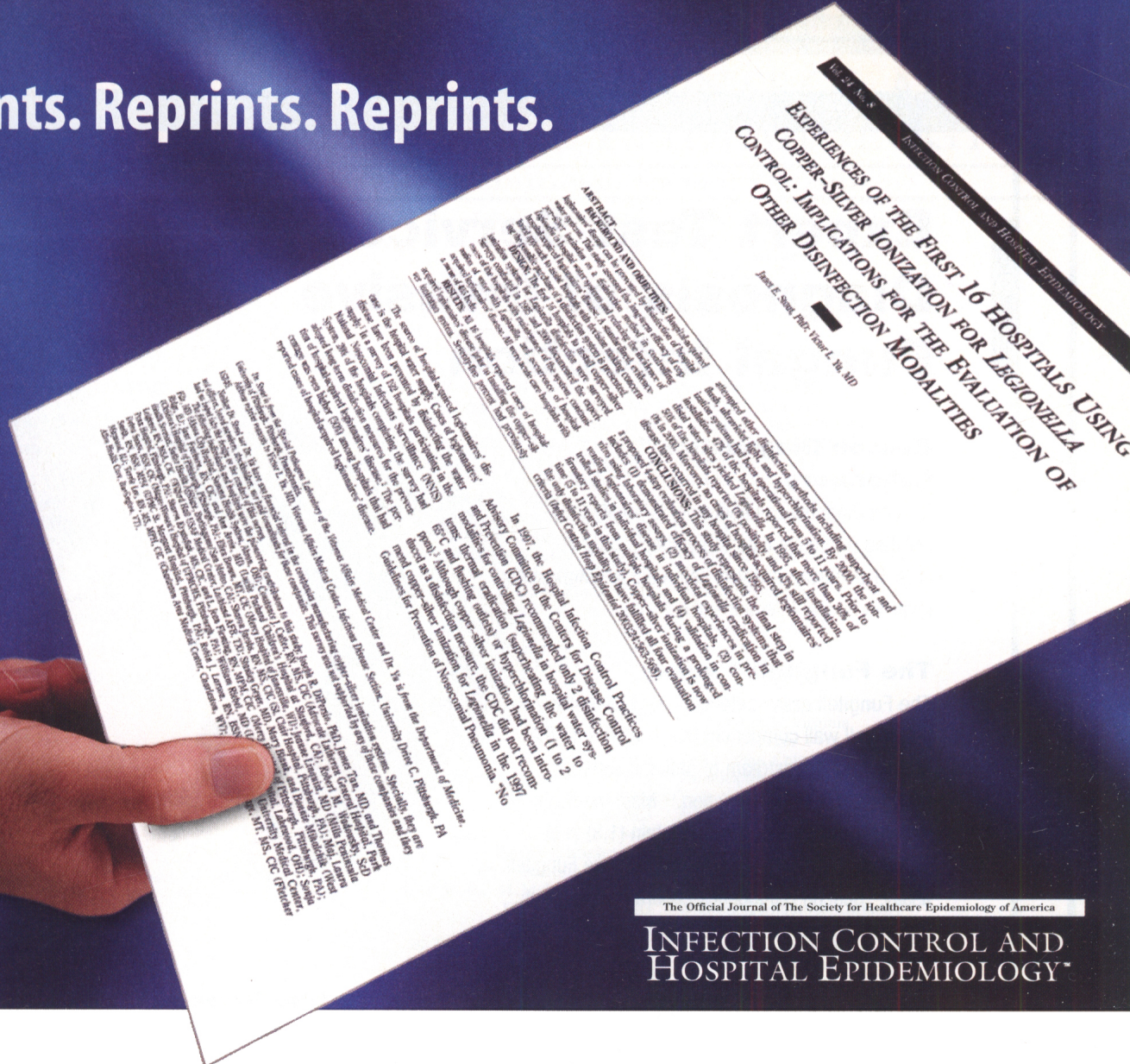
BeaconDiagnostics™
LABORATORY

A Division of Associates of Cape Cod

124 Bernard E. Saint Jean Drive, E. Falmouth, MA 02536 > Tel: (800) 568-0058 > Fax: (508) 540-9333

PN001465 Rev000

Reprints. Reprints. Reprints.



EXPERIENCES OF THE FIRST 16 HOSPITALS USING COPPER-SILVER IONIZATION FOR LEGIONELLA CONTROL: IMPLICATIONS FOR THE EVALUATION OF OTHER DISINFECTION MODALITIES

Janet E. Smead, PhD, David L. Nis, MD

ABSTRACT

OBJECTIVE: To determine the effectiveness of copper-silver ionization (CSI) for Legionella control in hospital water systems. **DESIGN:** Retrospective analysis of 16 hospitals. **SETTING:** Various hospital settings. **PARTICIPANTS:** Hospital infection control and engineering departments. **MEASUREMENTS AND MAIN RESULTS:** CSI was implemented in 16 hospitals between 1997 and 2000. The number of Legionella isolations decreased significantly after implementation. **CONCLUSIONS:** CSI is an effective method for Legionella control in hospital water systems.

Other disinfection modalities including ultraviolet light and hypochlorination. By 2000, the total number of Legionella isolations decreased from 11 to 1. The mean time to detect Legionella after implementation of CSI was 10.5 months. The mean time to detect Legionella after implementation of CSI was 10.5 months. The mean time to detect Legionella after implementation of CSI was 10.5 months.

In 1997, the Hospital Infection Control Practices Advisory Committee (HICPAC) recommended only 2 disinfection modalities for controlling Legionella in hospital water systems: ultraviolet radiation (supersaturating the water to 65°C and flushing outdoors) or hypochlorination (1 to 2 ppm). Although copper-silver ionization had been introduced as a disinfection measure for Legionella in the 1987 Guidelines for Prevention of Nosocomial Pneumonia, "No

The success of hospital-acquired Legionnaires' disease is largely dependent on the effectiveness of the water disinfection system. In a survey of 122 hospitals participating in the National Nosocomial Infection Survey (NNIS), 10% of the hospitals reported no water disinfection system. The first 16 hospitals to implement CSI were included in this study. The mean time to detect Legionella after implementation of CSI was 10.5 months. The mean time to detect Legionella after implementation of CSI was 10.5 months.

The Official Journal of The Society for Healthcare Epidemiology of America
INFECTION CONTROL AND HOSPITAL EPIDEMIOLOGY

Your story is worth repeating.

Article reprints offer an easy solution to help you distribute information to your patients and colleagues. When you find an article in INFECTION CONTROL AND HOSPITAL EPIDEMIOLOGY, don't bury it in the archives – spread the word with an INFECTION CONTROL AND HOSPITAL EPIDEMIOLOGY reprint.

Call today for a FREE quote and learn how INFECTION CONTROL AND HOSPITAL EPIDEMIOLOGY can help you.

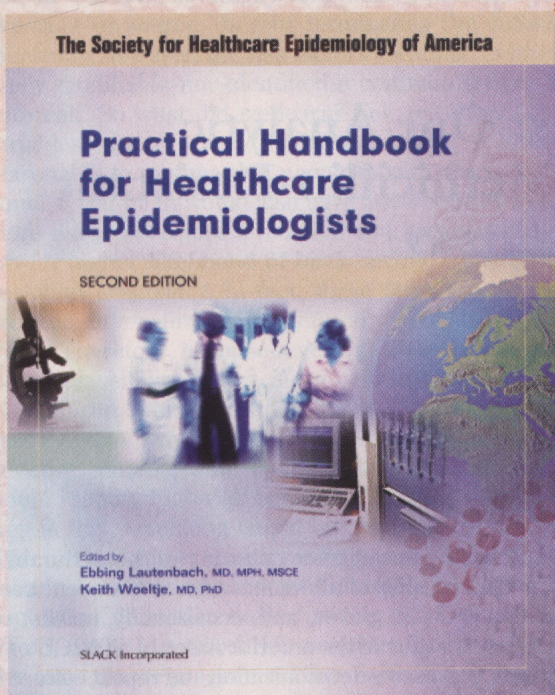
Our professional customized article reprints offer:

- Quick turn-around time
- Full color or black-and-white reproduction
- 8.5" x 11" booklet bound format
- High-quality glossy stock

For a FREE quote, call John Kain, Director of Reprint Sales, at **1-800-257-8290**, ext. 238 (856-848-1000 in N.J. or outside the U.S.); e-mail: jkain@slackinc.com; or visit us online at slackinc.com/reprints.

Also available electronically — call for details.

You Have Questions... We Have the Answers



Practical Handbook for Healthcare Epidemiologists Second Edition

Ebbing Lautenbach, MD, MPH, MSCE, *University of Pennsylvania, Philadelphia, PA* and Keith Woeltje, MD, PhD, *Washington University School of Medicine, St. Louis, MO*

400 pp., Hard Cover, 2004, ISBN 1-55642-677-1, Order #16771, **\$94.95**

If you work in today's healthcare epidemiology programs **you will need** the latest edition of *Practical Handbook for Healthcare Epidemiologists*. Situations that are encountered daily can be challenging, and now the answers needed are available in one solid resource.

The Society for Healthcare Epidemiology of America (SHEA) has recruited over 50 recognized leaders in the field to share their expertise. They discuss overarching goals, as well as successful strategies for handling specific situations and problems.

New to this edition:

- Patient safety
- Bioterrorism preparedness
- Antimicrobial resistance
- Hand hygiene

Topics Inside:

- How to negotiate with administration
- How to survive JCAHO and OSHA inspections
- How to implement exposure workups
- Ethical decisions and application to infection control
- The building blocks of surveillance-identification to communication
- Extending infection control programs into long-term care and outpatient facilities

BUY Both the Book and PDF CD-ROM – SAVE 25%!

ORDER FORM

QUANTITY	TITLE	ORDER #	PRICE
	Practical Handbook for Healthcare Epidemiologists, 2E	16671	\$ 94.95
	Practical Handbook for Healthcare Epidemiologists, 2E PDF CD-ROM	16992	\$ 94.95
	Special: Book and PDF CD-ROM	16771 & 16992	\$142.42

Subtotal	\$
Purchases in CA & NJ are subject to tax. Please add applicable state and local tax	\$
Handling	\$ 5.00
Total	\$

Are the shipping and billing addresses the same?

Yes No

Name: _____

Address: _____

City: _____ State: _____ Zip: _____

Phone: _____ Fax: _____

Email: _____

Check enclosed (Payable to SLACK Incorporated)

Charge my:

American Express Visa Mastercard

Account #: _____ Security Code: _____

Exp. date: _____ Signature _____

Call: (800) 257-8290 or
(856) 848-1000

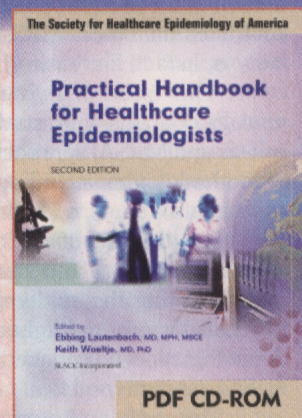
World Wide Web Site:
www.slackbooks.com/epidemiology

Mail order form to:
SLACK Incorporated
Professional Book Division
6900 Grove Road
Thorofare, NJ 08086-9864

Fax: (856) 853-5991

E-mail: orders@slackinc.com

*This is the most
complete hands-on
source about
healthcare
epidemiology and
infection prevention
and control.*



Buy the Book on CD-ROM!

Practical Handbook for Healthcare Epidemiologists, Second Edition, PDF CD-ROM
CD-ROM, 2004, ISBN 1-55642-699-2,
Order #16992, **\$94.95**

The CD-ROM contains all the text, all the images, every single element of the book available in an easy-to-carry CD-ROM!