

The first mitogenome of the genus *Amphalius* (Siphonaptera: Ceratophyllidae) and its phylogenetic implications – CORRIGENDUM

Ju Pu , Xiaoxia Lin and Wenge Dong

Corrigendum

Cite this article: Pu J, Lin X, Dong W (2024). The first mitogenome of the genus *Amphalius* (Siphonaptera: Ceratophyllidae) and its phylogenetic implications – CORRIGENDUM. *Parasitology* **151**, 1397–1400. <https://doi.org/10.1017/S0031182024001604>

<https://doi.org/10.1017/S0031182024000635>, Published online by Cambridge University Press: 03 December 2024

The author regrets the inclusion of the below errors in the above article. These errors concern the numbering of several figures and supplementary figures.

The correct list is as follows:

Figures

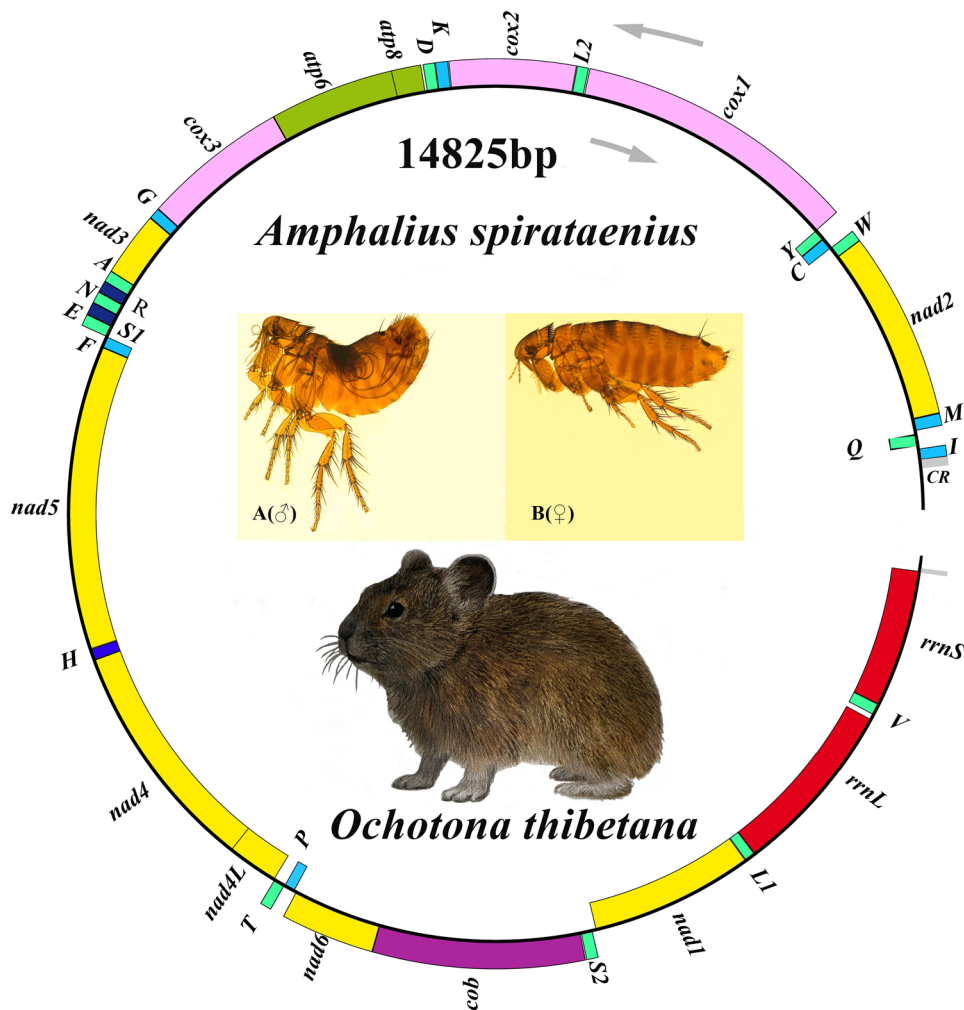


Figure 1. Organization of the *Amphalius spirataenius* mitogenome. tRNA genes were shown with the single-letter abbreviations of their corresponding amino acids. (note: The morphological figure of *Ochotona thibetana* from the volume 7 of *The Mammals of The World* (Wilson et al., 2017))

© The Author(s), 2025. Published by Cambridge University Press. This is an Open Access article, distributed under the terms of the Creative Commons Attribution licence (<http://creativecommons.org/licenses/by/4.0/>), which permits unrestricted re-use, distribution and reproduction, provided the original article is properly cited.

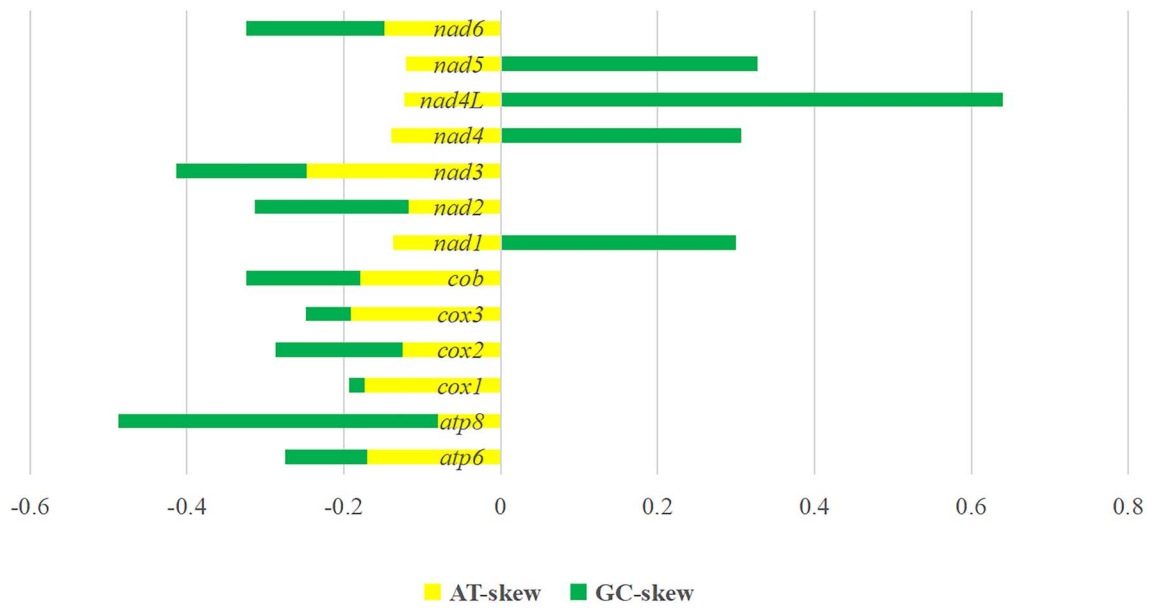


Figure 2. Skewness of 13 protein-coding genes of *Amphalius spirataenius*

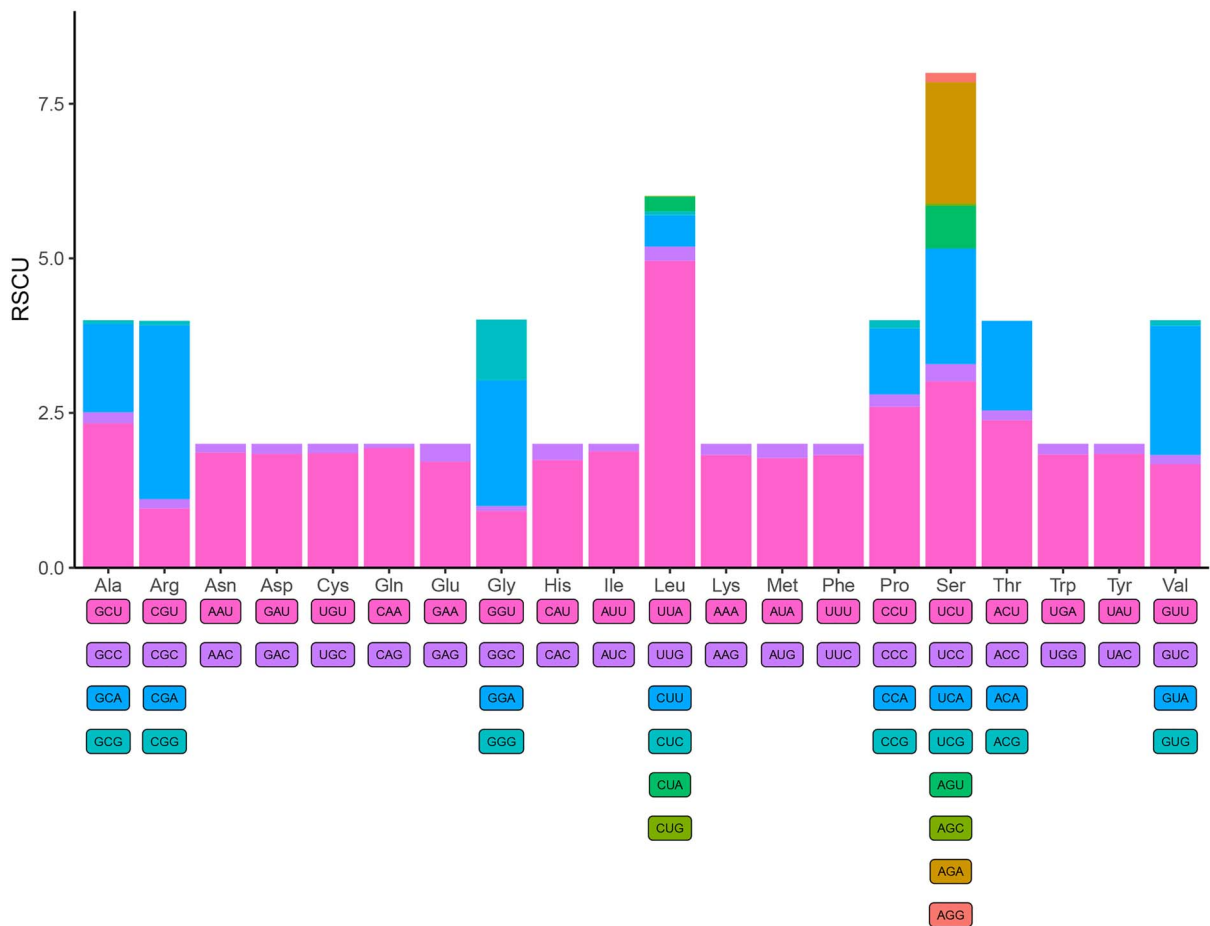


Figure 3. Relative synonymous codon usage (RSCU) of *Amphalius spirataenius*. The Y-axis represents the RSCU value, and the X-axis represents the codons corresponding to each amino acid

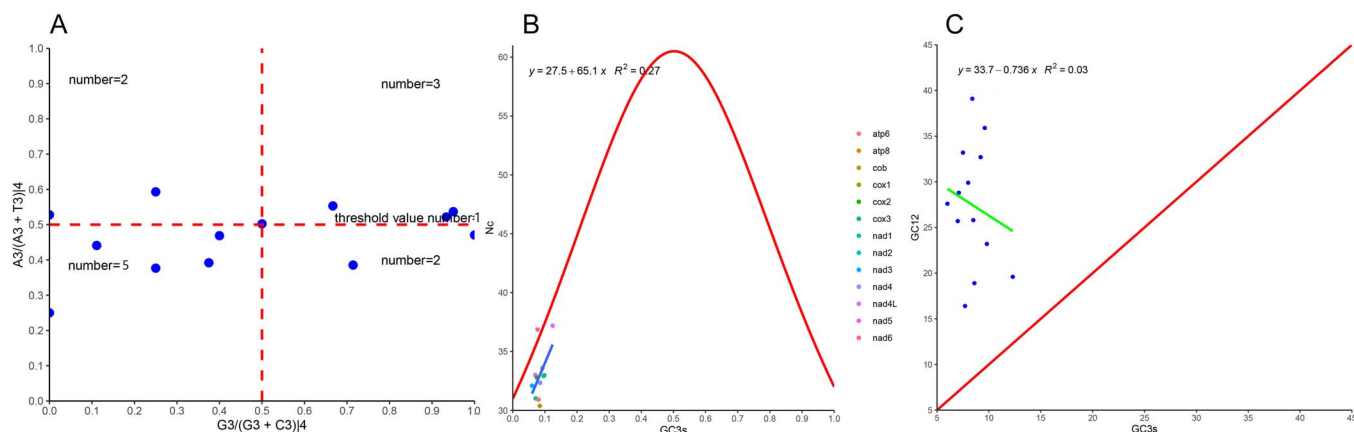


Figure 4. Analysis of 13 protein-coding genes of *Amphalius spirataenius*. A PR2; B ENC-plot; C Neutral curve

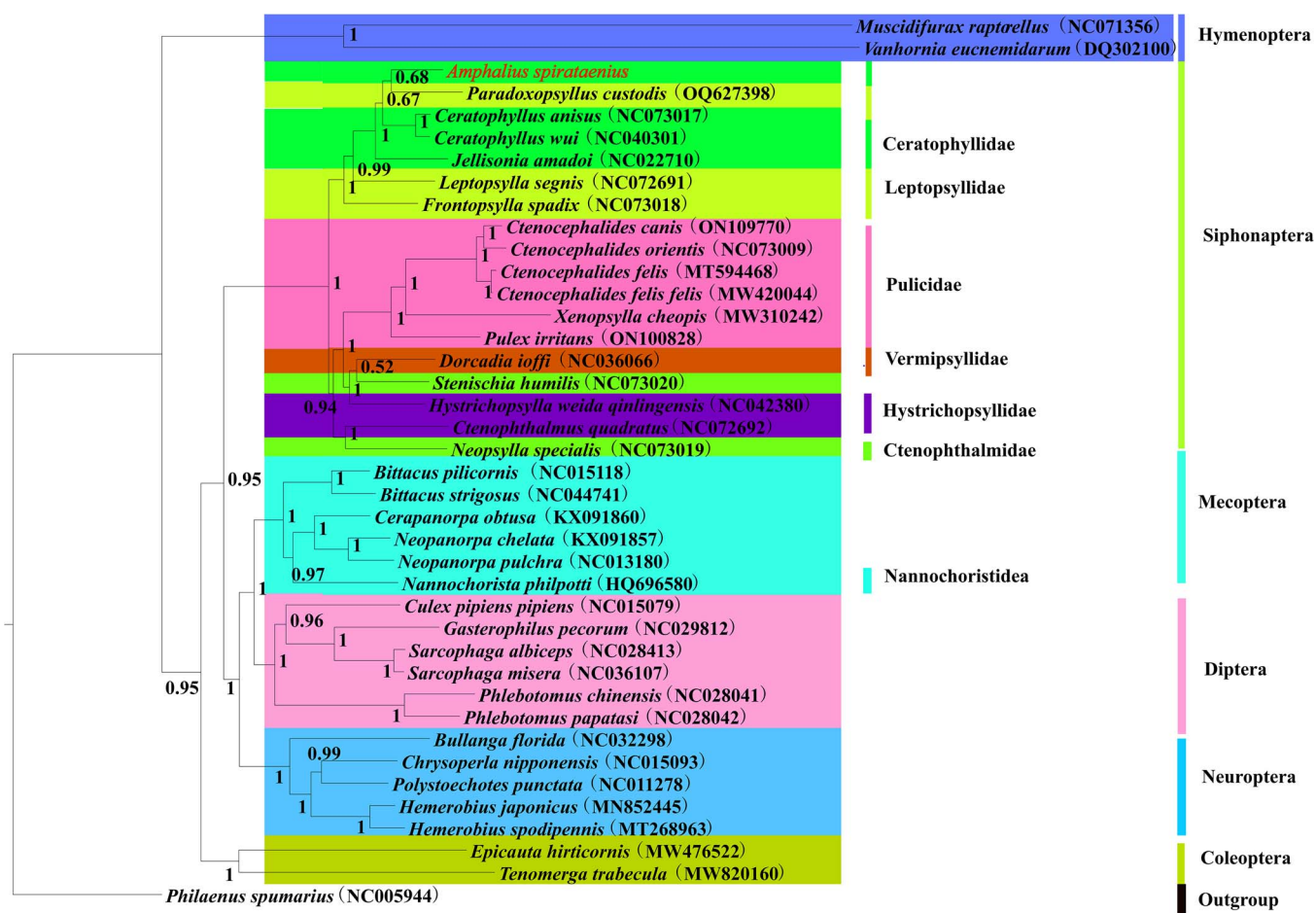


Figure 5. Phylogenetic tree of 40 insect species was constructed using Bayesian methods with *Philaenus spumarius* as the outgroup and node values as posterior probability values (PP). *Amphalius spirataenius* was labelled in red

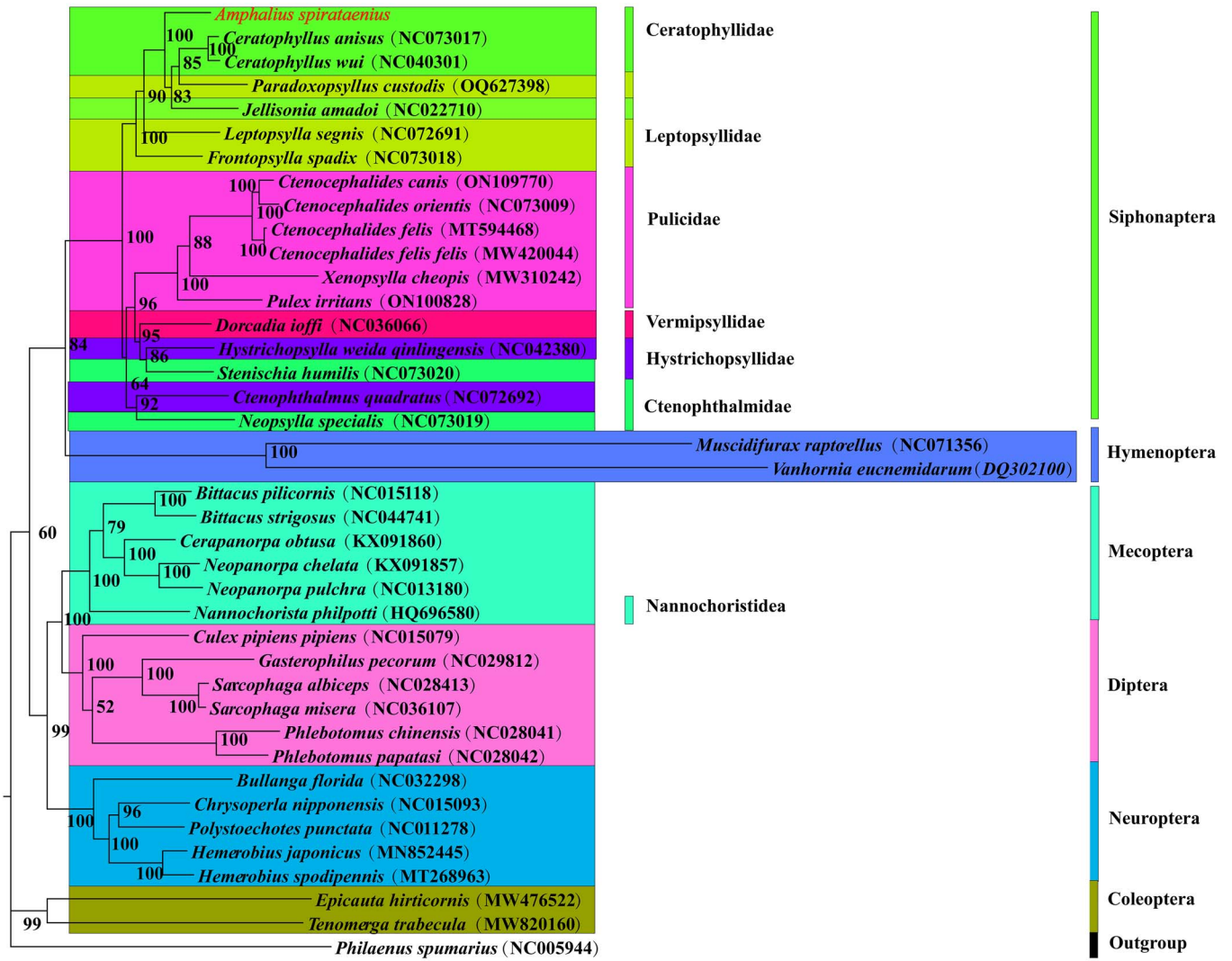


Figure 6. Phylogenetic tree of 40 insect species was constructed by Maximum likelihood method with *Philaenus spumarius* as an outgroup and node values as bootstrap values (BS). *Amphalius spirataenius* was labelled in red

Supplementary Figures

The author apologises for these errors and wishes to correct them through this notice.

Reference

Pu J, Lin X, Dong W. The first mitogenome of the genus *Amphalius* (Siphonaptera: Ceratophyllidae) and its phylogenetic implications. *Parasitology*. Published online 2024:1–11. doi:10.1017/S0031182024000635