

Crops and Soils Research Paper

Cite this article: Paltineanu C, Domnariu H, Mocanu V, and Dumitru S (2025). Assessing soils' health by using soil organic carbon (SOC) content, SOC/clay ratio and mean SOC reference values: a case study on Romanian mineral soils. *The Journal of Agricultural Science* 1–13. <https://doi.org/10.1017/S0021859625000280>

Received: 31 December 2024

Revised: 23 March 2025

Accepted: 6 April 2025

Keywords:


bulk density; elevation; environment; land resources; soil clay; soil depth

Corresponding author:

Cristian Paltineanu;

Email: cristian_paltineanu@yahoo.com

Assessing soils' health by using soil organic carbon (SOC) content, SOC/clay ratio and mean SOC reference values: a case study on Romanian mineral soils

Cristian Paltineanu , Horia Domnariu, Victoria Mocanu and Sorina Dumitru

National Research and Development Institute for Soil Science, Agrochemistry and Environment – ICPA, Bucharest, Romania

Abstract

Soil health is essential for a resilient ecosystem. The European Union proposed a Soil Monitoring Law for a legal framework of soil health. This study proposes a way to assess the mineral soil health. A database of mineral soils containing <20% organic matter and consisting of 10 soil classes and 22 soil types was used. There were four altitudinal groups (HM [high mountains], LM [low mountains and high hills], LH [low hills], PL [low plains]), covering the vegetation/climate floors, two land uses (forestland and grassland combined and cropland) and three soil textures (coarse [CO], loamy [LO] and clayey [CL]). Both soil organic carbon (SOC)/clay ratios and observed per mean SOC (O/M SOC) ratios were calculated for 19 regions. For SOC/clay, the 1/13, 1/10 and 1/8 thresholds were used, whereas O/M SOC categories were grouped as 'low', 'intermediate', 'high' and 'very high' health. SOC/clay and O/M SOC ratios combined were used to characterize soil health. SOC sequestration depends on many factors that are specific for each pedo-climatic region and texture and so is the soil characterization as healthy or not healthy. The recommended simultaneous application of these two indicators revealed specific SOC content values as reference levels for good soil health, which decrease from the wetter climates towards the drier ones. SOC content considerably differed among pedo-climatic regions, and soil health should be compared within the same regions that have specific SOC sequestration conditions. Correlations between support points SOC values and the aridity index allow separation between 'healthy' and 'non-healthy' soil conditions for any climate, vegetation floor and land use.

Introduction

Soils represent the fundamental component for the agricultural system, for wild flora, fauna and humankind. The healthy condition of the soils is essential for food production and for a resilient ecosystem. More than 60% of European soils are considered 'unhealthy', being affected by the land degradation process (Panagos *et al.*, 2024). The European Union (European Commission, 2023a,b) has recently proposed a Soil Monitoring Law to offer a legal framework for soil health. Soil fertility and health are defined by their properties, such as organic matter, clay content, bulk density (BD), pH, etc., and soil organic carbon (SOC) influences many soil properties, being of utmost importance (Paltineanu *et al.*, 2024). Soils store the most organic carbon in the terrestrial biosphere (Lal, 2004; Schmidt *et al.*, 2011). Various soil functions and health indicators were developed by some scientists (Schulte *et al.*, 2014; Van Leeuwen *et al.*, 2017; Sere *et al.*, 2024) using SOC. Geology, climate, land use, land management, etc., influence SOC sequestration (Scharlemann *et al.*, 2014; Paustian *et al.*, 2019; Paltineanu *et al.*, 2020a, 2024). Establishing the benchmarks for SOC storage as low, medium and high levels is complex and variable, depending on different soil-forming factors such as parent material, topography, climate, time, soil biology, human intervention (Richter and Yaalon, 2012) and site-specific factors (soil texture, potential for carbon sequestration and management practices (Drexler *et al.*, 2022; Prout *et al.*, 2022; Chahal *et al.*, 2024).

Fine silt and clay particles retain more stable the organic carbon in soil as shown by Hassink (1997), Hassink and Whitmore (1997), Stewart *et al.* (2007) and Matus (2021), while Fujisaki *et al.* (2018) and Heikkinen *et al.* (2022) also stressed the clay contribution for SOC sequestration. Six *et al.* (2002) and Rasmussen *et al.* (2018) emphasized the role of clay mineralogy as an important predictor of soil carbon, while Singh *et al.* (2017) reported the higher capacity of sesquioxides and kaolinitic-illitic minerals for soil carbon stabilization.

The indicator represented by SOC/clay ratio was chosen by Johannes *et al.* (2017) in Switzerland and used by Prout *et al.* (2021) in England and Wales to characterize the soil health using the following thresholds: >1/8 (0.125) as very good, between 1/8 and 1/10 (0.100) as good,

© The Author(s), 2025. Published by Cambridge University Press. This is an Open Access article, distributed under the terms of the Creative Commons Attribution licence (<http://creativecommons.org/licenses/by/4.0/>), which permits unrestricted re-use, distribution and reproduction, provided the original article is properly cited.



between 1/10 and 1/13 (0.077) as moderate and <1/13 as degraded. The SOC/clay ratio has been recently proposed as an indicator of soil organic matter status for mineral soils within the framework of the European Soil Monitoring Law proposal (European Commission, 2023a). However, Poeplau and Don (2023), Rabot *et al.* (2024), Mäkipää *et al.* (2024), Feeney *et al.* (2024), Chahal *et al.* (2024) and Paltineanu *et al.* (2025b) criticized the ratio between SOC and clay content as a universal soil health index, especially for extreme-textured soils. Poeplau and Don (2023) consequently proposed a ratio between observed (current) and 'expected' SOC estimated using linear regression models to predict the SOC content depending on clay content, while in the case of Feeney *et al.* (2024), the authors proposed a ratio between the observed and 'typical' SOC (O/T SOC), where 'typical' SOC was defined as its mean content estimated by regression analysis for various pedo-climate zones. According to Feeney *et al.* (2024), O/T SOC incorporates the influences of land cover, climate and soil texture alike. Nevertheless, the recent attempts to find an agreement for soil health assessment are not yet worldwide recognized. In Romania, there is a large diversity of landscapes, climates, vegetation floors and soil conditions requiring the development of a specific soil health indicator for a consistent soil depth of 0.5 m, for this part of Europe. Paltineanu *et al.* (2025a) have reported data and a recent methodology on the health indicators across this country. Development of a reliable and realistic indicator of SOC storage accounting for the various driving variables at a regional scale is still required (Chahal *et al.*, 2024).

The purpose of this study is to find a more adapted way to assess the mineral soil health in central-south-eastern European environments (Romania) for a soil depth of 0.5 m, based on the hypothesis that different pedo-climatic regions exert significant effects on SOC values, by adjusting to local conditions the methods used by recent approaches on expected SOC values for shallower depths (e.g. Poeplau and Don, 2023; Feeney *et al.*, 2024; Chahal *et al.*, 2024).

Materials and methods

A database (ICPA Bucharest Archive) of 991 mineral soil profiles was used for this study. The database consisted of chemical and physical analyses taken from the soil pedo-genetical horizons and analysed for basic soil properties (e.g. SOC, particle-size distribution, pH, etc.) using the standardized methods reported by Florea *et al.* (1987). The profiles were sampled during 2012–2022 in forestland, grassland and cropland, which were in a relatively balanced proportion. The landforms are balanced across Romania and diverse (low and high-level river plains, hills, plateaus and mountains), and the elevation varies from the sea level to about 2500 m high in the mountains, determining the continental-temperate climate across Romania. Mean annual air temperature (T) and precipitation (P) data have been estimated for a time period starting from 1961 for more than four decades, for each soil profile with the Climate Adapt Program by interpolating the data grid (New *et al.*, 2002). Using the above data, the de Martonne aridity index (Iar) (with $Iar = Pr/(T+10)$, de Martonne, 1926) has been calculated.

The vegetation is also diverse, from that one specific to steppes and silvo-steppes in the south-eastern part of the country to that of deciduous trees in the high plains, tablelands and hills and coniferous trees and specific shrubs and grasses in the high mountains. The national soil taxonomy system (Florea and Muntenu, 2012) was used in this study. There were 10 soil classes and 22 soil types (in parentheses) studied, as follows: (1) Antrisol

(Anthrosol, 15 soil profiles); (2) Cambisols (Eutricambosols and Districambosols, 255 profiles); (3) Chernisols (Chernozems, Phaeozems, Kastanozems, Rendzinas, 188 profiles); (4) Hydrisols (Gleysols and Stagnosols, 31 profiles); (5) Luvisols (Preluvosols, Luvisols, Alosols, 259 profiles); (6) Protisols (Aluviosols, Psamosols, Regosols, Lithosols, 174 profiles); (7) Salsodisols (Solonchaks/Solonetztes, 18 profiles); (8) Spodisols (Prepodzols and Podzols, 38 profiles); (9) Umbrisols (Humosiosols, 2 profiles); and (10) Vertisols (Pelosols and Vertosols, 11 profiles). Details for the natural elevation zoning and soil location and presentation in Romania can be found in three recent papers (Dumitru *et al.*, 2024; Lacatusu *et al.*, 2019; and Paltineanu *et al.*, 2024).

Considering the procedures reported by Poeplau and Don (2023), Feeney *et al.* (2024) and Chahal *et al.* (2024), and adjusting them to the studied area and to the specific conditions, the environment characteristics of Romanian territory were grouped according to elevation (i.e. differing for climate: precipitation, temperature, lar and vegetation), landform, land use, soil texture, soil pH, because these features were found to be key predictors for SOC content (Dumitru *et al.*, 2024; Lăcătușu *et al.*, 2019; Paltineanu *et al.*, 2024), resulting in 19 pedo-climatic regions, as described in Table 1. SOC contents calculated as average values for 0.5 m depth, similar to all soil properties' calculation, were more or less homogeneous within each region and substantially differing between regions. The soil depth of 0.5 m was used because most of the active plant roots develop within that depth, as a result of previous studies (Paltineanu *et al.*, 2016, 2024).

SOC content reached an equilibrium in grassland and forestland under a long and continuous period (Hassink, 1997; Matus, 2021). Paltineanu *et al.* (2020b) found higher SOC values and better physical properties such as soil total- and macro-porosity and hydraulic conductivity for the same soil types in forest soils versus arable soils. Observed per mean SOC (O/M SOC ratios) values were thus calculated from the current SOC content values divided by the mean SOC average values of those land uses where human influence on the environment was minimum and where SOC sequestration reached a pedo-climatic equilibrium, that is, forestland and grassland, for each soil texture. These ratios were calculated as mean values (\pm standard deviations) for each region. These mean SOC (M SOC) content values were considered as 'reference levels', shown in Table 1 in bold, for a good soil health in the studied pedo-climatic regions for forestland and grassland; in other words, the mean SOC contents for each texture and elevation (climate and vegetation alike) obtained from a large data number, were 'reference levels' for a good soil health not only for forestland and grassland, but also for cropland (that has no own reference level SOC). SOC content means ranged from about 1.0% within low-elevation plains to about 6.0% within high-elevation mountains. The O/M SOC categories of this normalized indicator were grouped according to method of Feeney *et al.* (2024), by using 'quartile.exc' function from Microsoft Excel, such as: 'low' category below the first quartile, 'intermediate' between the first and second quartiles (medians), 'high' between the second and third quartiles, 'very high' above the third quartile and below the upper fence boundary, while outliers were those values higher than the upper fence. Analysis of variance and Duncan's multiple range test were used to compare the means of the analysed soil properties (SPSS 21 version software) and also regression equations and *t* test to establish statistical significance.

There were four altitudinal groups in Romania, generally covering the vegetation and climate floors (Lăcătușu *et al.*, 2019;

Table 1. Means of annual air temperature, precipitation, aridity index and SOC content for 0.5 m depth depending on elevation (climate + vegetation floor), land use and clay content; SOC means in forestland and grassland are considered 'reference levels' (**bold**) for each studied pedo-climatic region in Romania, while SD is standard deviation, and the small letters in superscript in the furthest right column represent significant differences when different

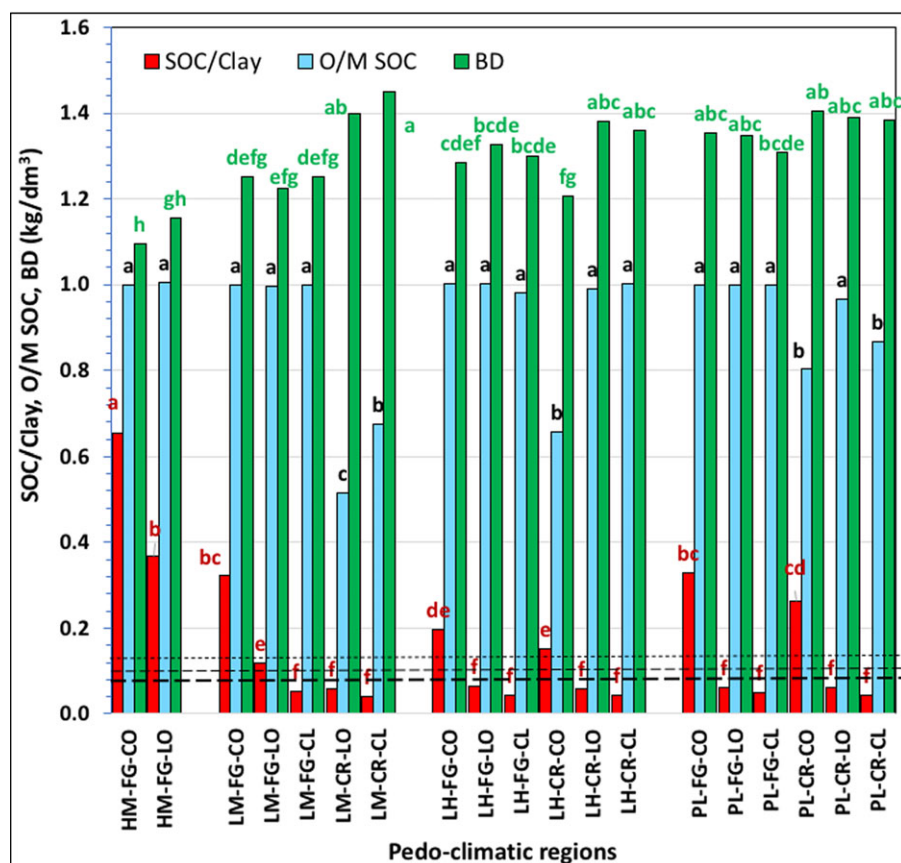
Pedo-climatic regions	Mean elevation (m)	Profiles' number	Land use	Clay content	Data no.	Air temperature (T) ± SD (°C)	Precipitation (P) ± SD (mm)	Iar ± SD mm/°C	SOC ± SD (%)
High mountains									
1. HM-FG-CO	1200–2200	22	Forest-Grass	<12	22	5.0 ± 2.2	881 ± 48	60.4 ± 11	5.33 ± 3.3^a
2. HM-FG-LO	1200–2200	25	Forest-Grass	13–32	25	5.9 ± 2.3	872 ± 53	56.7 ± 13	5.86 ± 2.6^a
Low mountains, high hills and plateaus									
3. LM-FG-CO	500–1200	50	Forest-Grass	<12	50	6.9 ± 1.9	779 ± 52	46.8 ± 8	2.60 ± 1.6^b
4. LM-FG-LO	500–1200	145	Forest-Grass	13–32	145	7.7 ± 1.4	760 ± 48	43.2 ± 5	2.12 ± 1.2^{bcd}
5. LM-FG-CL	500–1200	24	Forest-Grass	>33	24	8.2 ± 1.0	739 ± 44	40.8 ± 3	2.21 ± 1.2^b
6. LM-CR-LO	500–1200	7	Cropland	13–32	7	7.1 ± 0.6	690 ± 25	40.3 ± 3	1.09 ± 0.6 ^{efg}
7. LM-CR-CL	500–1200	5	Cropland	>33	5	7.9 ± 0.9	717 ± 45	40.0 ± 1	1.49 ± 0.3 ^{cdefg}
Low hills, plateaus and high plains									
8. LH-FG-CO	200–500	24	Forest-Grass	<12	24	9.6 ± 0.5	680 ± 43	34.7 ± 2	1.54 ± 1.0^{cdefg}
9. LH-FG-LO	200–500	159	Forest-Grass	13–32	159	9.5 ± 0.7	674 ± 53	34.6 ± 3	1.35 ± 0.5^{defg}
10. LH-FG-CL	200–500	67	Forest-Grass	>33	67	9.4 ± 0.7	663 ± 38	34.2 ± 2	1.87 ± 1.1^{bcd}
11. LH-CR-CO	200–500	6	Cropland	<12	6	9.5 ± 0.7	639 ± 37	32.8 ± 2	1.01 ± 0.5 ^{fg}
12. LH-CR-LO	200–500	36	Cropland	13–32	36	9.4 ± 0.6	648 ± 40	33.4 ± 2	1.34 ± 0.5 ^{defg}
13. LH-CR-CL	200–500	41	Cropland	>33	41	9.3 ± 0.7	656 ± 32	33.9 ± 2	1.84 ± 0.8 ^{bcd}
Low plains									
14. PL-FG-CO	0–200	15	Forest-Grass	<12	15	10.6 ± 0.5	576 ± 65	28.0 ± 4	1.12 ± 0.4^{efg}
15. PL-FG-LO	0–200	95	Forest-Grass	13–32	95	10.7 ± 0.5	580 ± 66	28.1 ± 4	1.48 ± 0.5^{cdefg}
16. PL-FG-CL	0–200	76	Forest-Grass	>33	76	10.8 ± 0.4	585 ± 45	28.1 ± 2	2.03 ± 0.6^{bcd}
17. PL-CR-CO	0–200	10	Cropland	<12	10	10.7 ± 0.4	587 ± 36	28.4 ± 2	0.90 ± 0.6 ^g
18. PL-CR-LO	0–200	112	Cropland	13–32	112	10.6 ± 0.2	606 ± 26	29.5 ± 2	1.43 ± 0.5 ^{cdefg}
19. PL-CR-CL	0–200	72	Cropland	>33	72	10.6 ± 0.2	600 ± 24	29.2 ± 1	1.76 ± 0.6 ^{cdef}

Paltineanu *et al.*, 2024), characterized by specific mean annual precipitation, air temperature and de Martonne Iar values, as well as by specific SOC means. The pedo-climatic regions were named after the first two letters for (a) landforms (HM [high-elevation mountains]; LM [low-elevation mountains and high-elevation hills and plateaus], LH [low-elevation hills, plateaus and high plains], PL [low-elevation plains]), (b) for land uses (FG [forestland and grassland combined] and CR [cropland]) and (c) for soil texture (coarse [CO], with clay content <12%; loamy [LO], with clay content between 13 and 32%; and clayey [CL], with clay content >33%). The highest studied pedo-climatic regions (mountain area, 1200–2200 m a.s.l.) consist of two combined forestland-grassland sub-regions separated by soil texture (with a coarse texture and a loamy one); there is no cropland at this high elevation. Both sub-regions show a cool mean annual temperature (5–6°C), high precipitation (>950 mm annually) and a wet climate aridity index (Iar=57–60 mm/°C), where SOC content reaches as much as 5.3–5.9% (reference level), which is statistically higher than SOC content in all the other regions, but is not much different between soil textures (Table 1).

The following pedo-climatic regions (altitudinal area of 500–1200 m a.s.l.) occur in low mountains, high hills and plateaus and consist of five sub-regions, with three of them covering the forestland-grassland areas separated by soil textures and two sub-regions of

cropland because of two existing soil textures, the loamy and clayey ones. Mean annual air temperature roughly ranges between 7 and 8°C, while precipitation and Iar occur between 690 and 780 mm and 40–47 mm/°C, respectively. The mean SOC content varies from about 2.12–2.60% (reference level) in the forestland-grassland areas to around 1.10–1.50% in the cropland areas. The two forestland-grassland sub-regions present significantly higher SOC values than the cropland regions. The 200–500 m altitudinal area (pedo-climatic regions), with two land use sub-regions (forestland and grassland combined and cropland) and three soil texture sub-regions (coarse, loamy and clayey), consists geomorphologically of low hills, plateaus and high plains (Table 1). The mean annual air temperature ranges around 9.3–9.6°C, precipitation around 640–680 mm and Iar around 33–35 mm/°C. The mean SOC content ranges between 1.35 and 1.87% (reference level) in forest-grassland areas and from 1.0 to 1.84% in cropland areas, slowly increasing from a coarse texture to a clayey one. The last altitudinal (0–200 m a.s.l.) area (pedo-climatic regions) also consists of both land use sub-regions and three soil texture sub-regions. The mean annual air temperature varies around 10.6–10.8°C, precipitation around 575–600 mm and Iar around 28.0–29.6 mm/°C (Table 1). The average SOC content shows a pattern that is similar to one of the 200–500 m a.s.l. pedo-climatic region. The reference level of SOC content was between 1.12 and 2.03% for this area, depending on soil texture.

Figure 1. SOC/clay, O/M SOC and bulk density (BD, kg/dm³) as 0.5 m depth means in the studied pedo-climatic regions and sub-regions; the values (columns) that are associated with different letters are significantly different for the same character, and the horizontal dash lines represent the 1/13 (0.077), 1/10 (0.100) and 1/8 (0.125) SOC/clay lines that are considered limits for various levels of healthy soils by EU recommendations.



Results

SOC/clay, O/M SOC and BD in the studied pedo-climatic regions

Figure 1 shows SOC/clay, O/M SOC and BD (kg/dm³) as 0.5 m soil depth average values in the studied pedo-climatic regions. The SOC/clay ratio shows the highest values within the mountain areas (HM-FG-CO and HM-FG-LO), much higher than the recommended EU SOC/clay values. For the other pedo-climatic regions, the SOC/clay values were significantly higher within the coarse-textured soils (and also higher than the EU recommended soils) than in the loamy- and clayey-textured soils, because of the increase in ratio denominators. Unlike the SOC/clay ratios, the mean O/M SOC ratio values, calculated using denominators (reference levels) that were specific for each sub-region, were around 1.0 in most pedo-climatic regions and sub-regions where their maximum potential was reached, being a normalized indicator and showing that the SOC drivers' influence was thus levelled across the country's soils within these areas. Nevertheless, for some cropland sub-regions (LM-CR-LO, LM-CR-CL, LH-CR-CO, PL-CR-CO and PL-CR-CL), where the SOC sequestration conditions were below their pedo-climatic potential for SOC sequestration from forestland and grassland, the O/M SOC means were significantly lower than 1.0. Further comparisons were then made within the pedo-climatic regions that had certain capacities to sequester C in soils.

Considered a proxy for the soil structure, BD was the lowest in the mountain areas (HM-FG-CO and HM-FG-LO) and showed a good soil health through the other derived soil physical properties (porosity, hydraulic conductivity, Paltineanu *et al.*, 2020b) and was

the highest in cropland regions (LM-CR-LO, LM-CR-CL, LH-CR-LO, LH-CR-CL, PL-CR-CO, PL-CR-LO and PL-CR-CL), probably due also to tillage and field work. Among some of these regions, BD presented significant differences.

SOC, SOC/clay, O/M SOC and BD for soil classes depending on the pedo-climatic regions

The mean values of 0.5 m depth for SOC, SOC/clay, O/M SOC and BD of soil classes depending on pedo-climatic regions represented by mountains, high-elevation hills and plateaus are shown in Table 2, the upper part, while those represented by low hills, plateaus, high plains and low plains are in Table 2, the lower part, together with their characterizations. 'Support points' SOC values (written in bold in Table 2) were established for all sub-regions using an intersection of two criteria: SOC/clay values of minimum 0.077, that is, moderate soil health, and at least an 'intermediate' O/M SOC quartile category (where SOC/clay ratios were high) or preferably a 'high' or very high O/M SOC quartile categories (where the case, trying to meet these both conditions, where possible). At the same time, in the case of the clayey texture, adjustments were made to meet the increasing SOC trend with Iar and elevation. For example, the HM-FG-CO pedo-climatic region generally consists of Spodosols, Cambisols and Protisols, with SOC values from 1.66 to 10.3%, and where SOC/clay exceeds 0.125, showing a very good soil health condition. O/M SOC range was split into four categories according to its calculated quartiles; the 'low' soil health category was delimited by the quartile of 0.53 (higher limit), corresponding to a mean SOC value of 1.66% and a mean of 0.19 value for SOC/clay, while the 'intermediate' category

Table 2. Mean values of SOC, SOC/clay, O/M SOC and BD for 0.5 m depth for interquartile intervals of soil classes depending on pedo-climatic regions represented by mountains, high-elevation hills and plateaus, low-elevation hills and plateaus and high plains and low plains and their characterization; SD is standard deviation

Pedo-climatic regions	Prevailing soil classes	SOC (%) \pm SD	SOC/ clay	SOC/clay categories	O/M SOC	Quartile intervals for O/M SOC (1–3)/ outliers	O/M SOC category	BD (kg/dm ³)
Mountains, high-elevation hills and plateaus								
1. HM-FG-CO	Protisols, Cambisols	1.66 \pm 1.06	0.19 \pm 0.06	Very good	0.31 \pm 0.20	<0.53	Low	1.27 \pm 0.17
	Cambisols, Spodosols	3.63 \pm 0.52	0.39 \pm 0.06	Very good	0.68 \pm 0.10	(0.53, 0.88)	Intermediate	1.29 \pm 0.31
	Spodosols	5.94 \pm 0.92	0.73 \pm 0.20	Very good	1.12 \pm 0.17	(0.88, 1.43)	High	1.00 \pm 0.27
	Spodosols	10.31 \pm 1.78	1.34 \pm 0.19	Very good	1.93 \pm 0.33	>1.43	Very high	0.80 \pm 0.26
2. HM -FG-LO	Cambisols, Spodosols	3.00 \pm 0.86	0.18 \pm 0.06	Very good	0.51 \pm 0.15	<0.66	Low	1.27 \pm 0.08
	Cambisols, Spodosols	4.56 \pm 0.40	0.26 \pm 0.08	Very good	0.78 \pm 0.07	(0.66, 0.90)	Intermediate	1.15 \pm 0.16
	Cambisols, Spodosols	6.40 \pm 0.90	0.40 \pm 0.10	Very good	1.10 \pm 0.16	(0.90, 1.36)	High	1.11 \pm 0.19
	Cambisols, Spodosols	9.67 \pm 1.55	0.61 \pm 0.08	Very good	1.67 \pm 0.24	>1.36	Very high	1.09 \pm 0.19
3. LM-FG-CO	Protisols, Cambisols	1.14 \pm 0.25	0.15 \pm 0.06	Very good	0.44 \pm 0.10	<0.55	Low	1.40 \pm 0.15
	Cambisols, Protisols	1.76 \pm 0.20	0.23 \pm 0.07	Very good	0.68 \pm 0.08	(0.55, 0.80)	Intermediate	1.22 \pm 0.16
	Cambisols, Protisols	2.55 \pm 0.34	0.36 \pm 0.31	Very good	0.98 \pm 0.13	(0.80, 1.20)	High	1.26 \pm 0.15
	Cambisols, Spodosols	4.51 \pm 0.86	0.54 \pm 0.31	Very good	1.73 \pm 0.33	(1.20, 2.16)	Very high	1.13 \pm 0.25
	Spodosols, Umbrisols	7.57 \pm 0.34	0.63 \pm 0.01	Very good	2.91 \pm 0.13	>2.16	Outliers	1.13 \pm 0.03
4. LM-FG-LO	Luvisols, Cambisols	1.05 \pm 0.25	0.06 \pm 0.02	Degraded	0.50 \pm 0.12	<0.66	Low	1.29 \pm 0.14
	Cambisols, Luvisols	1.60 \pm 0.14	0.09 \pm 0.02	Moderate	0.76 \pm 0.07	(0.66, 0.88)	Intermediate	1.22 \pm 0.15
	Cambisols, Luvisols	2.09 \pm 0.14	0.11 \pm 0.03	Good	0.98 \pm 0.07	(0.88, 1.11)	High	1.22 \pm 0.15
	Cambisols, Luvisols	2.91 \pm 0.38	0.16 \pm 0.05	Very good	1.37 \pm 0.18	(1.11, 1.78)	Very high	1.20 \pm 0.16
	Cambisols, Spodosols	5.60 \pm 2.35	0.36 \pm 0.23	Very good	2.64 \pm 1.11	>1.78	Outliers	1.06 \pm 0.24
5. LM-FG-CL	Cambisols, Luvisols	1.26 \pm 0.20	0.03 \pm 0.01	Degraded	0.57 \pm 0.09	<0.67	Low	1.30 \pm 0.10
	Protisols, Luvisols	1.72 \pm 0.18	0.05 \pm 0.01	Degraded	0.78 \pm 0.08	(0.67, 0.88)	Intermediate	1.31 \pm 0.03
	Luvisols, Cambisols	2.20 \pm 0.14	0.05 \pm 0.01	Degraded	0.99 \pm 0.06	(0.88, 1.13)	High	1.17 \pm 0.12
	Chernisols, Cambisols	2.91 \pm 0.35	0.08 \pm 0.01	Moderate	1.32 \pm 0.16	(1.13, 1.82)	Very high	1.22 \pm 0.14
	Cambisols	6.95	0.10	Good	3.14	>1.82	Outliers	1.20
6. LM-CR-LO	Cambisols, Luvisols	0.42 \pm 0.27	0.03 \pm 0.02	Degraded	0.20 \pm 0.13	<0.29	Low	1.43 \pm 0.04
	Cambisols	0.99 \pm 0.30	0.06 \pm 0.03	Degraded	0.47 \pm 0.14	(0.29, 0.57)	Intermediate	1.33 \pm 0.10
	Cambisols, Luvisols	1.34 \pm 0.11	0.08 \pm 0.03	Moderate	0.60 \pm 0.67	(0.57, 0.67)	High	1.48 \pm 0.11
	Protisols	2.13	0.08	Good	1.05	>0.67	Very high	1.32
7. LM-CR-CL	Cambisols	1.13	0.03	Degraded	0.51	<0.54	Low	1.50
	Antrisol, Protisols	1.43 \pm 0.26	0.04 \pm 0.01	Degraded	0.65 \pm 0.12	(0.54, 0.73)	Intermediate	1.42 \pm 0.06
	Chernisols	1.69	0.04	Degraded	0.77	(0.73, 0.78)	High	1.53
	Luvisols	1.78	0.05	Degraded	0.80	>0.78	Very high	1.37
Low-elevation hills and plateaus and high plains								
8. LH-FG-CO	Cambisols, Luvisols	0.73 \pm 0.09	0.11 \pm 0.06	Good	0.47 \pm 0.06	<0.58	Low	1.28 \pm 0.10
	Protisols, Cambisols	1.14 \pm 0.15	0.11 \pm 0.04	Good	0.74 \pm 0.10	(0.58, 0.87)	Intermediate	1.31 \pm 0.08

(Continued)

Table 2. (Continued)

Pedo-climatic regions	Prevailing soil classes	SOC (%) \pm SD	SOC/ clay	SOC/clay categories	O/M SOC	Quartile intervals for O/M SOC (1–3)/ outliers	O/M SOC category	BD (kg/dm ³)
	Luvisols, Protisols	1.52 \pm 0.11	0.15 \pm 0.03	Very good	0.99 \pm 0.07	(0.87, 1.07)	High	1.30 \pm 0.19
	Cambisols, Protisols	2.20 \pm 0.55	0.36 \pm 0.30	Very good	1.43 \pm 0.36	(1.07, 1.82)	Very high	1.25 \pm 0.11
	Cambisols	5.73	0.68	Very good	3.72	>1.82	Outliers	1.25
9. LH-FG-LO	Luvisols, Cambisols	0.80 \pm 0.19	0.04 \pm 0.01	Degraded	0.59 \pm 0.14	<0.76	Low	1.34 \pm 0.08
	Luvisols, Cambisols	1.14 \pm 0.08	0.06 \pm 0.02	Degraded	0.84 \pm 0.06	(0.76, 0.95)	Intermediate	1.34 \pm 0.11
	Luvisols, Cambisols	1.45 \pm 0.12	0.07 \pm 0.02	Degraded	1.07 \pm 0.09	(0.95, 1.22)	High	1.33 \pm 0.14
	Luvisols, Cambisols	1.99 \pm 0.24	0.09 \pm 0.03	Moderate	1.47 \pm 0.17	(1.22, 1.90)	Very high	1.29 \pm 0.12
	Chernisols, Protisols	2.75 \pm 0.09	0.12 \pm 0.03	Good	2.04 \pm 0.07	>1.90	Outliers	1.38 \pm 0.17
10. LH-FG-CL	Luvisols, Anthrisols	0.87 \pm 0.20	0.02 \pm 0.01	Degraded	0.47 \pm 0.11	<0.63	Low	1.35 \pm 0.14
	Luvisols, Cambisols	1.45 \pm 0.19	0.04 \pm 0.01	Degraded	0.78 \pm 0.10	(0.63, 0.97)	Intermediate	1.32 \pm 0.11
	Luvisols, Protisols	2.09 \pm 0.17	0.05 \pm 0.01	Degraded	1.12 \pm 0.09	(0.97, 1.28)	High	1.27 \pm 0.11
	Chernisols, Cambisols	2.99 \pm 0.40	0.08 \pm 0.02	Moderate	1.60 \pm 0.21	>1.28	Very high	1.25 \pm 0.11
11. LH-CR-CO	Protisols	0.48	0.07	Degraded	0.31	<0.36	Low	1.15
	Protisols	0.66 \pm 0.12	0.09 \pm 0.06	Moderate	0.43 \pm 0.08	(0.36, 0.60)	Intermediate	1.14 \pm 0.11
	Protisols	1.28 \pm 0.23	0.19 \pm 0.02	Very good	0.83 \pm 0.15	(0.60, 0.98)	High	1.28 \pm 0.05
	Luvisols	1.71	0.27	Very good	1.11	>0.98	Very high	1.24
12. LH-CR-LO	Protisols, Anthrisols	0.77 \pm 0.12	0.04 \pm 0.01	Degraded	0.57 \pm 0.09	<0.69	Low	1.34 \pm 0.11
	Protisols, Luvisols	1.05 \pm 0.06	0.05 \pm 0.01	Degraded	0.78 \pm 0.04	(0.69, 0.87)	Intermediate	1.46 \pm 0.09
	Luvisols, Cambisols	1.43 \pm 0.12	0.06 \pm 0.01	Degraded	1.06 \pm 0.09	(0.87, 1.18)	High	1.37 \pm 0.13
	Protisols, Cambisols	1.96 \pm 0.38	0.09 \pm 0.03	Moderate	1.45 \pm 0.28	(1.18, 1.92)	Very high	1.39 \pm 0.17
	Chernisols	3.15	0.13	Very good	2.33	>1.92	Outliers	1.06
13. LH-CR-CL	Luvisols, Protisols	1.04 \pm 0.19	0.03 \pm 0.01	Degraded	0.56 \pm 0.10	<0.69	Low	1.43 \pm 0.16
	Protisols, Luvisols	1.41 \pm 0.07	0.03 \pm 0.01	Degraded	0.76 \pm 0.04	(0.69, 0.81)	Intermediate	1.42 \pm 0.10
	Vertisols, Luvisols	1.72 \pm 0.17	0.04 \pm 0.01	Degraded	0.92 \pm 0.09	(0.81, 1.10)	High	1.35 \pm 0.08
	Chernisols, Luvisols	2.74 \pm 0.41	0.06 \pm 0.01	Degraded	1.47 \pm 0.22	(1.10, 1.71)	Very high	1.30 \pm 0.17
	Chernisols	4.82 \pm 1.59	0.10 \pm 0.03	Good	2.58 \pm 0.85	>1.71	Outliers	1.07 \pm 0.04
Low plains								
14. PL-FG-CO	Protisols, Chernisols	0.32 \pm 0.17	0.06 \pm 0.03	Degraded	0.29 \pm 0.15	<0.42	Low	1.43 \pm 0.20
	Protisols, Luvisols	0.64 \pm 0.10	0.05 \pm 0.41	Degraded	0.57 \pm 0.09	(0.42, 0.69)	Intermediate	1.42 \pm 0.07
	Protisols, Luvisols	1.02 \pm 0.31	0.15 \pm 0.07	Very good	0.91 \pm 0.28	(0.69, 1.31)	High	1.18 \pm 0.25
	Protisols, Cambisols	1.87 \pm 0.51	0.32 \pm 0.24	Very good	1.67 \pm 0.45	>1.31	Very high	1.39 \pm 0.09
15. PL-FG-LO	Luvisols, Protisols	0.87 \pm 0.14	0.04 \pm 0.01	Degraded	0.59 \pm 0.09	<0.72	Low	1.38 \pm 0.11
	Protisols, Chernisols	1.27 \pm 0.11	0.06 \pm 0.02	Degraded	0.86 \pm 0.07	(0.72, 0.96)	Intermediate	1.38 \pm 0.10
	Chernisols, Luvisols	1.57 \pm 0.08	0.07 \pm 0.02	Degraded	1.06 \pm 0.06	(0.96, 1.16)	High	1.33 \pm 0.10
	Cambisol, Chernisols	2.01 \pm 0.26	0.08 \pm 0.02	Moderate	1.36 \pm 0.18	(1.16, 1.81)	Very high	1.30 \pm 0.10
	Protisols, Hydrisols	3.24 \pm 0.66	0.11 \pm 0.02	Good	2.19 \pm 0.44	>1.81	Outliers	1.22 \pm 0.14
16. PL-FG-CL	Luvisols, Hydrisols	1.27 \pm 0.28	0.03 \pm 0.01	Degraded	0.63 \pm 0.14	<0.81	Low	1.38 \pm 0.09
	Hydrisols, Chernisols	1.81 \pm 0.11	0.04 \pm 0.01	Degraded	0.89 \pm 0.05	(0.81, 1.00)	Intermediate	1.35 \pm 0.08

(Continued)

Table 2. (Continued)

Pedo-climatic regions	Prevailing soil classes	SOC (%) \pm SD	SOC/ clay	SOC/clay categories	O/M SOC	Quartile intervals for O/M SOC (1–3)/ outliers	O/M SOC category	BD (kg/dm ³)
	Chernisols, Salsodisols	2.24 \pm 0.12	0.05 \pm 0.01	Degraded	1.10 \pm 0.06	(1.00, 1.20)	High	1.28 \pm 0.10
	Chernisols, Vertisols	2.80 \pm 0.28	0.07 \pm 0.01	Degraded	1.38 \pm 0.14	>1.20	Very high	1.22 \pm 0.16
17. PL-CR-CO	Protisols, Luvisols	0.59 \pm 0.19	0.23 \pm 0.21	Very good	0.52 \pm 0.17	<0.65	Low	1.48 \pm 0.10
	Protisols	0.86 \pm 0.17	0.68 \pm 0.97	Very good	0.77 \pm 0.15	(0.65, 0.94)	Intermediate	1.36 \pm 0.23
	Protisols, Chernisols	1.36 \pm 0.27	0.16 \pm 0.02	Very good	1.22 \pm 0.24	(0.94, 1.42)	High	1.44 \pm 0.12
	Chernisols, Luvisols	1.68 \pm 0.02	0.15 \pm 0.01	Very good	1.50 \pm 0.01	>1.42	Very high	1.35 \pm 0.04
18. PL-CR-LO	Luvisols, Cambisols	0.79 \pm 0.13	0.03 \pm 0.01	Degraded	0.53 \pm 0.09	<0.61	Low	1.39 \pm 0.10
	Luvisols, Chernisols	1.17 \pm 0.16	0.05 \pm 0.01	Degraded	0.79 \pm 0.11	(0.61, 0.98)	Intermediate	1.43 \pm 0.12
	Chernisols, Luvisols	1.60 \pm 0.10	0.07 \pm 0.02	Degraded	1.08 \pm 0.07	(0.98, 1.25)	High	1.40 \pm 0.10
	Chernisols	2.17 \pm 0.25	0.09 \pm 0.02	Moderate	1.47 \pm 0.17	>1.25	Very high	1.35 \pm 0.14
19. PL-CR-CL	Chernisols, Luvisols	1.06 \pm 0.25	0.03 \pm 0.01	Degraded	0.52 \pm 0.12	<0.70	Low	1.40 \pm 0.11
	Chernisols, Hydrisols	1.57 \pm 0.10	0.04 \pm 0.01	Degraded	0.77 \pm 0.05	(0.70, 0.86)	Intermediate	1.36 \pm 0.14
	Chernisols, Hydrisols	1.93 \pm 0.12	0.05 \pm 0.01	Degraded	0.95 \pm 0.06	(0.86, 1.06)	High	1.41 \pm 0.10
	Chernisols, Vertisols	2.33 \pm 0.14	0.06 \pm 0.01	Degraded	1.15 \pm 0.07	(1.06, 1.59)	Very high	1.39 \pm 0.09
	Hydrisols	4.78	0.08	Moderate	2.35	>1.59	Outliers	1.02

was delimited by the quartiles of 0.53 and 0.88, and the corresponding 3.63% as a mean SOC content, and 0.39 SOC/clay as a ratio mean. Consequently, for the SOC content reference level of the 1200–2200 m pedo-climatic region, the SOC value of 1.66% characterizes a low O/M SOC category, that is, a low (weak) soil health for the land use and climate potential of this mountainous region, even if SOC/clay ratio shows a very good health. Similarly, the high (good) and very high soil health conditions would be characterized by SOC contents that are higher than 3.63% (in bold in Table 2), because O/M SOC means show an intermediate soil health. Similarly, from the same mountainous region, HM-FG-LO presents a very good health according to SOC/clay ratios and low and intermediate soil health according to O/M SOC values up to a SOC content mean of 4.56% (also in bold in Table 2); from this SOC value on, the soil health presents high and very high health conditions for the region potential for carbon sequestration.

Following the next pedo-climate regions that decrease in elevation and are described in Table 2, it can be seen that the soil classes change slowly between regions while their corresponding SOC contents decrease slowly. Even if LM-FG-CO region presents a very good soil health after SOC/clay ratio for all textures, a mean SOC content of 1.76% would show a high soil health according to the SOC sequestration potential for this low mountainous forest-grassland region, while a SOC content of about 7.6% (outlier) would show ‘extremely high’ health condition. Similarly, for LM-FG-LO, LM-FG-CL, LM-CR-LO and LM-CR-CL regions, the SOC content means of 1.60, 1.72, 0.99 and 1.43% would show the limits for an intermediate and/or high soil health condition according to O/M SOC ratios; nevertheless, after SOC/clay ratios, the SOC values would be 2.09 instead of 1.60, a higher value; as 2.91, instead of 1.72%, a higher value; as 1.34, instead of 0.99%; and much above

the value of 1.8, for instance, 2.91 from the same climate region (500–1200 m a.s.l.), as LM-FG-CL, instead of 1.43% (Table 2).

The altitudinal pedo-climatic regions represented by low hills, plateaus and high plains consist of various soil classes that change slowly from one region to another (Table 2, the lower part). Following the same reasoning as above, the SOC content mean values for LH-FG-CO, LH-FG-LO, LH-FG-CL, LH-CR-CO, LH-CR-LO and LH-CR-CL regions characterizing a ‘good’ or ‘high health’ condition according to both SOC/clay ratios and O/M SOC ratios are as follows: 1.14, 1.99, 2.99, 0.66, 1.96 and 2.74%, respectively, with the higher values for the finer soil textures. For the other pedo-climatic regions from the low-elevation plains: PL-FG-CO, PL-FG-LO, PL-FG-CL, PL-CR-CO, PL-CR-LO, PL-CR-CL the SOC content means meeting both criteria are: 1.02, 2.01, 2.80, 0.86, 2.17, 2.33%, respectively, again with the higher values for the finer soil textures.

Correlation between the support points of SOC content values and *Iar*, the SOC limits for a ‘good’ soil health

Using the highlighted (bold) SOC means limits for a good soil health fitting both criteria, that is, SOC/clay and O/M SOC ratios as shown in the above tables, that is, the support points, and *Iar* values to characterize climate for each pedo-climatic regions, regression equations were calculated for each soil texture, resulting in lower baselines (LBLs) (Fig. 2). This means, that for any coarse-, loamy- and clayey-textured soil occurring at any elevation below 2200 m a.s.l. and with *Iar* mean values of up to 90 mm/°C, practically covering most of the country land and pedo-climatic regions, these wrapping LBLs may be generally considered ‘diffuse’ boundaries to assess separation of ‘healthy’ soils that are above the curves from ‘non-healthy’ ones, which are below the curves. The higher point

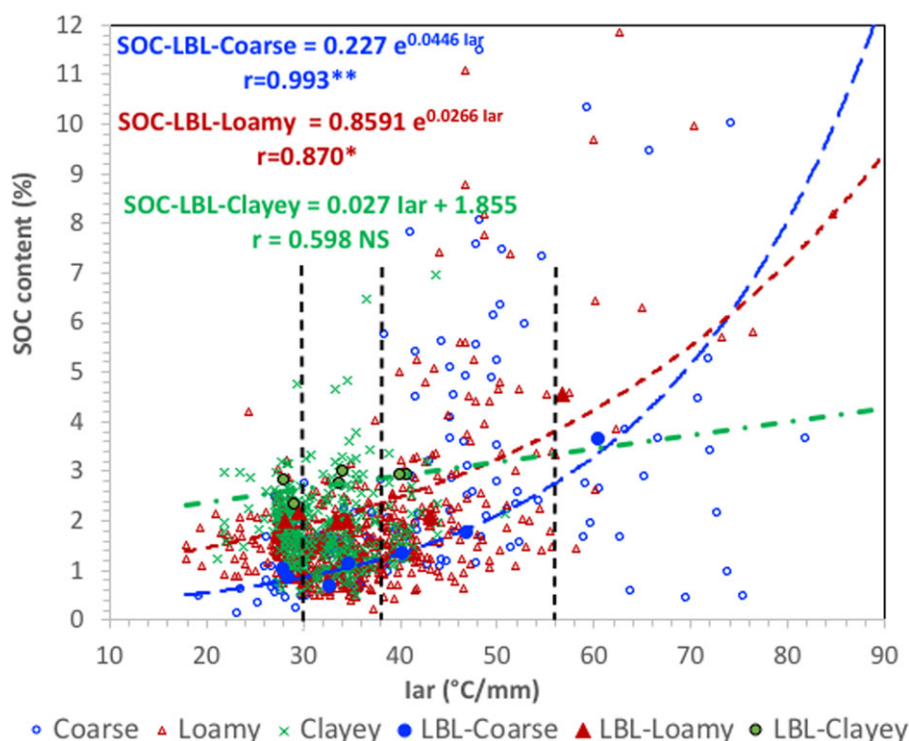


Figure 2. Relationships between the SOC limits for a good soil health and lar and the distribution of SOC contents (average values for 0.5 m depth); vertical lines from left to right show the estimated limits of elevation for the pedo-climatic regions of 200 m (lar=30), 500 m (lar=38) and 1200 m (lar=56), respectively.

position in the graph, the higher (better) soil health. The correlation incorporates the influence of elevation, climate and vegetation on the soils' health, versus the optimum conditions for SOC sequestration from forestland and grassland combined within any specific region, thus showing the current soil health in any land use. There was no significant LBL for clayey-textured soils, because the range of this texture was not sufficiently wide, especially towards the higher lar values and high hills or mountains. However, the correlation coefficient of 0.598 was below the significant threshold (0.81), and because of this relative vicinity, the LBL for clayey-textured soils was still accounted for in this approach, only to have an orientation trend.

On the other hand, there was no significant correlation between O/M SOC values and lar ($y = 0.0013x + 0.9532$, with $r = 0.0245$ as not significant), the whole function value for all the lar range reaching about 1.0 and showing no dependence between O/M SOC and lar (data not presented).

Comparison between the two methods of health characterization, SOC/clay ratio and O/M SOC ratio and SOC/clay ratio combined

Using the regression equations obtained by help of the procedure using O/M SOC ratios and SOC/clay ratios combined, presented in Fig. 2, the SOC content values for each soil texture were separated into two domains: above the curve, characterized as healthy, and below the curves, as not healthy (Table 3). Further below, Table 4 presents the SOC/clay ratio characterization for the same textures and soil classes: as not healthy (degraded) for SOC/clay ratios below 0.077, moderate for the ratios between 0.078 and 0.100, good for 0.101 and 0.125 and very good for ratios higher than 0.126. In addition to percentages, the mean indicator and SD values were shown in these tables.

For the coarse texture, the degraded soil health condition showed higher values according to the O/M SOC ratio and SOC/

clay ratio combined method, where the percentage of degraded soil health soils were much higher (Table 3) than according to the SOC/clay ratio method (Table 4); for example, Protisols were 51.1% in Table 3 versus 11.1%, in Table 4, as not healthy, except for Chernisols. Conversely, the percentage of 'healthy' soils was much higher when using only SOC/clay ratios in characterization; out of these three categories of healthy soils, the highest SOC/clay values (>0.126) were prevailing (Table 4), showing a bias due to the lowest clay contents. The means of SOC content for each category are within their own intervals. For the loamy soil texture, the situation is different. The degraded soils generally prevailed when using both indicators, O/M SOC ratio and SOC/clay ratio combined, versus SOC/clay ratio, except for Chernisols and Salsodisols, where the indicator values were inversely related but were not much different. In the case of clayey, the degraded soils according to O/M SOC ratio and SOC/clay ratio combined from Table 3 presented lower values than those from Table 4, where there were more than 90%, in some cases even 100%, just because of the high clayey contents, and this might also be a biased result.

Discussion

Elevation zoning is the main geographical driver in Romania, because it determines or influences climate, flora and soil, as well as other physical-geographical features (Mihăilescu, 1969; Babaca, 1973; Serbanescu et al., 1973; Paltineanu et al., 2000; Dragu et al., 2009). By combining elevation (mainly representing the climate, vegetation and soils), land use and soil texture, the resulting pedo-climatic regions presented certain SOC values, which in many cases were significantly different among each other and were region-specific (Table 1). For the lower-elevation pedo-climatic regions represented by tablelands, low hills and plains, the difference between the reference levels of SOC is less obvious because of the drier climate. Organic soils containing more than 20% organic matter from local wet and warm regions caused by the

Table 3. Percentage of the assessed soil profiles, mean and standard deviation (SD) of SOC (%) for the studied soil classes as a function of soil texture (coarse [CO], loamy [LO], clayey [CL]) using the regression equations between SOC content and *I*ar from above and splitting the soil profiles into not healthy and healthy; here and in the following table, some cells contained no data because there were no corresponding soil classes for them

Soils' feature/soil class	Soil texture	Health condition	Protisols	Cambisols	Spodosols	Luvissols	Umbrisols	Chernisols	Anthrissols	Hydrisols	Salsodisols	Vertisols
%	CO	not healthy	51.1	40.8	18.8	54.5	0	33.3	-	-	-	-
%	CO	healthy	48.9	59.2	81.2	45.5	100	66.7	-	-	-	-
%	LO	not healthy	83.3	82.7	26.3	98.3	-	54.9	60.0	72.7	75.0	-
%	LO	healthy	16.7	17.3	73.7	1.7	-	45.1	40.0	27.3	25.0	-
%	CL	not healthy	86.4	85.7	100	95.9	-	79.8	100	100	100	72.7
%	CL	healthy	13.6	14.3	0.0	4.1	-	20.2	0	0	0	27.3
Mean ± SD	CO	not healthy	0.77 ± 0.49	1.81 ± 1.01	4.11 ± 1.01	0.90 ± 0.34	-	± 0.21	-	-	-	-
Mean ± SD	CO	healthy	1.76 ± 1.04	2.62 ± 1.03	7.54 ± 2.69	1.48 ± 0.31	6.61 ± 1.70	1.57 ± 0.14	-	-	-	-
Mean ± SD	LO	not healthy	1.24 ± 0.37	1.60 ± 0.68	2.96 ± 2.06	1.21 ± 0.41	-	1.35 ± 0.35	1.02 ± 0.51	1.29 ± 0.48	1.40 ± 0.32	-
Mean ± SD	LO	healthy	2.41 ± 0.36	4.40 ± 2.32	6.26 ± 2.87	2.34 ± 0.09	-	2.24 ± 0.64	2.59 ± 0.15	2.57 ± 0.49	1.97 ± 0.07	-
Mean ± SD	CL	not healthy	1.78 ± 0.47	1.65 ± 0.50	1.97 ± 0.43	1.39 ± 0.49	-	1.98 ± 0.45	1.17 ± 0.25	1.65 ± 0.36	1.84 ± 0.52	1.78 ± 0.45
Mean ± SD	CL	healthy	3.10 ± 0.26	4.46 ± 2.15	-	3.03 ± 0.51	-	3.32 ± 0.89	-	-	-	2.90 ± 0.39

presence of groundwater such as those from the Danube Delta were not included in this study.

The SOC/clay ratio was proposed by scientists and EU policy makers (European Commission, 2023a, 2023b) as a soil health indicator. However, some scholars criticized it because it did not succeed to meet all requirements. Firstly, SOC/clay is highly sensitive to clay contents and outside of loamy soils with medium clay contents (roughly 15–30% clay), the ratio starts to return disproportionately large records of either 'Very good' (in the case of clay-poor soils) or 'Degraded' (in the case of clay-rich soils). This is even noticeable for soils known to be considered rich in carbon and highly fertile (e.g. Chernozems). Secondly, SOC/clay does not account for climate or land cover differences, which are both highly important for governing topsoil organic carbon concentrations. These two points, taken together, make the SOC/clay ratio very challenging to use properly at a pan-European scale and thus render it a poor indicator of soil health for the proposed Soil Monitoring Law for adoption across the EU. For such reasons, Poeplau and Don (2023), Chahal *et al.* (2024) and Feeney *et al.* (2024) proposed additional indicators. Feeney *et al.* (2024) also reported that the O/T SOC ratio was less sensitive to clay content, land cover and climate, as well as less geographically skewed. Similar to their procedure, a 'SOC reference level' for 0.5 m depth was averaged for each pedo-climatic region (natural vegetation floor) in the current study. Unlike Chahal *et al.* (2024) who considered linear regression between SOC and clay content for the pasture systems to calculate their reference SOC expected values, both forest soils and grassland soils were used in the present study to estimate M SOC as average values. The present procedure might be considered a novelty, not only because of a different soil depth for mean values calculation, but also because of the way the O/M SOC ratio was calculated, establishing LBLs relative to *I*ar, which includes climate, vegetation and soil types.

The SOC/clay ratio was combined with the current O/M SOC ratio in this study, using the thresholds of each indicator, that is, the values of 1:8 (0.125), 1:10 (0.100) and 1:13 (0.077) for SOC/clay ratios as boundaries between four soil health categories: very good, good, moderate and degraded, respectively, as Johannes *et al.* (2017) and Prout *et al.* (2021) reported, and the quartiles as used by Feeney *et al.* (2024), described above. Similar to Feeney *et al.* (2024), the present study suggests that using SOC/clay and O/M SOC ratio in the pedo-climatic regions and sub-regions, the soil texture, which is a hard-to-change property, is not the only essential driver for soil health assessment. There is neither any risk to characterize the croplands as disproportionately degraded and forests as possessing always a very good soil health, because both forestland and grassland combined and cropland soils are related to the same soil health within a pedo-climatic region, that is, the health of forestland and grassland where SOC sequestration was the most stable. A similar assessment could be made for coarse-textured soils, which should not be considered as overwhelmingly healthy, just based on the reduced soil clay content values. As for the clayey-textured soils, the regression model establishing a baseline was not significant, although it was not too far from the significance threshold, and this was because an important part of the soil clay was of Pleistocene origin, which was found especially in low-elevation areas and former lakes that became dry land now. For such regions where SOC means are generally low and soil textures are more clayey, O/M SOC ratios have limited value, and SOC/clay ratios are still generally considered to characterize the soil health.

Table 4. Percentage, mean and standard deviation (SD) of SOC/clay ratios for the studied soil classes as a function of soil texture (coarse, loamy, clayey), splitting the soils into not healthy and various healthy categories

SOC/clay/soil class	Soil health attribute	Protisols	Cambisols	Spodosols	Luvisols	Umbrisols	Chernisols	Anthrisols	Hydrisols	Salsodisols	Vertisols
Coarse texture											
<0.077 not healthy	%	11.1	4.1	0.0	10.0	0.0	33.3	–	–	–	–
(0.078–0.100)	%	8.9	2.0	0.0	20.0	0.0	0.0	–	–	–	–
(0.101–0.125)	%	15.6	4.1	0.0	10.0	0.0	0.0	–	–	–	–
>0.126	%	64.4	89.8	100.0	60.0	100.0	66.7	–	–	–	–
<0.077 not healthy	Mean ± SD	0.056 ± 0.014	0.064 ± 0.006	–	0.055	–	0.052	–	–	–	–
(0.078–0.100)	Mean ± SD	0.087 ± 0.007	0.098	–	0.091 ± 0.010	–	–	–	–	–	–
(0.101–0.125)	Mean ± SD	0.106 ± 0.005	0.119 ± 0.002	–	0.114	–	–	–	–	–	–
>0.126	Mean ± SD	0.387 ± 0.414	0.289 ± 0.190	0.830 ± 0.411	0.259 ± 0.100	0.541 ± 0.118	0.144 ± 0.001	–	–	–	–
Loamy texture											
<0.077 not healthy	%	73.8	35.7	0.0	81.5	–	72.5	50.0	45.5	87.5	–
(0.078–0.100)	%	19.0	23.6	11.8	13.3	–	15.4	33.3	27.3	12.5	–
(0.101–0.125)	%	2.4	9.3	11.8	3.5	–	3.3	0.0	27.3	0.0	–
>0.126	%	4.8	31.3	76.5	1.7	–	8.8	16.7	0.0	0.0	–
<0.077 not healthy	Mean ± SD	0.051 ± 0.013	± 0.055	–	0.047 ± 0.015	–	0.058 ± 0.013	0.026 ± 0.008	0.037 ± 0.014	0.059 ± 0.014	–
(0.078–0.100)	Mean ± SD	0.088 ± 0.005	± 0.086	0.081 ± 0.001	0.086 ± 0.006	–	0.089 ± 0.007	0.087 ± 0.011	0.082 ± 0.004	0.087	–
(0.101–0.125)	Mean ± SD	0.115 ± 0.001	± 0.110	0.111 ± 0.006	0.109 ± 0.007	–	0.106 ± 0.004	–	0.109 ± 0.008	–	–
>0.126	Mean ± SD	0.147 ± 0.012	± 0.221	0.428 ± 0.223	0.139 ± 0.013	–	0.207 ± 0.192	0.146	–	–	–
Clayey texture											
<0.077 not healthy	%	93.2	90.0	100.0	98.6	–	95.7	100.0	100.0	100.0	90.9
(0.078–0.100)	%	6.8	10.0	0.0	1.4	–	1.1	0.0	0.0	0.0	9.1
(0.101–0.125)	%	0.0	0.0	0.0	0.0	–	2.1	0.0	0.0	0.0	0.0
>0.126	%	0.0	0.0	0.0	0.0	–	1.1	0.0	0.0	0.0	0.0
<0.077 not healthy	Mean ± SD	0.046 ± 0.012	0.039 ± 0.012	0.056 ± 0.011	0.036 ± 0.013	–	0.051 ± 0.013	0.028 ± 0.007	0.041 ± 0.010	0.046 ± 0.013	0.046 ± 0.014
(0.078–0.100)	Mean ± SD	0.084 ± 0.005	0.088 ± 0.003	–	0.096	–	0.086	–	–	–	0.079
(0.101–0.125)	Mean ± SD	–	–	–	–	–	0.108 ± 0.07	–	–	–	–
>0.126	Mean ± SD	–	–	–	–	–	0.128	–	–	–	–

A notable difference between the present study and those of Prout *et al.* (2021) and Feeney *et al.* (2024) is that the reference level of SOC content here was considered SOC content from the forestland and grassland combined. In this way, the SOC sequestration potential (not only the SOC/clay ratio) for a pedo-climatic region is taken into account for all land uses. This procedure allows comparisons within the pedo-climatic regions and sub-regions generated by textures. For example, Chernisols (mostly Chernozems and Phaeozems) occurring especially in dry plains of steppes and forest-steppes, and without a capillary rise effect from groundwater, cannot sequester similar amounts of organic C as the soils from wetter climates or mountainous regions but can be compared with each other. Similarly, Protisols, Hydrisols and other soil classes.

To characterize the soil health of any region in Romania or the neighbouring countries such as Hungary, Bulgaria, southern Ukraine, Serbia and the Republic of Moldova, the SOC reference levels might be considered, or the relationship between Iar and the SOC content mean limits (Fig. 2).

Limitations of this procedure refer to the database size, because some pedo-climatic regions were not equally represented, for example, LM-CR-LO, LM-CR-CL, LH-CR-CO and PL-CR-CO that had a relatively low number of analysed soil profiles and where the mean SOC reference level might be better represented with more data points and possibly obtaining more SOC support points, where they were missing in this approach. Nevertheless, this disadvantage can be removed in the future by enlarging the database. Another improvement might be to diversify the analysis by including soil types and sub-types in addition to the more comprehensive soil classes already assessed, when reliable SOC support points and regression lines can be obtained.

SOC/clay alone is not sufficient to assess the soil health under a wide range of conditions, and Rabot *et al.* (2024) criticized this indicator, finding that the acidic soils were characterized as healthy after the threshold of 1/13, while the alkaline soils were characterized as unhealthy. As Feeney *et al.* (2024) and Sauzet *et al.* (2024) also reported, the applicability of the SOC/clay ratio is entirely based on the regional conditions and does not have a worldwide application. Mäkipää *et al.* (2024) also stressed that SOC/clay alone is not adequate to characterize soil C loss, while Chahal *et al.* (2024) concluded that SOC/clay was not a reliable indicator of soil conditions, and SOC/SOC_{exp} might be more useful to estimate soil health and derive baseline soil carbon levels at a regional scale. In addition to SOC content, SOC/clay and O/M SOC ratios, as well as BD, other soil features may be considered to characterize soil health. Such situations refer to some pollutants like higher pesticide application and over-fertilization, as well as higher soil contents of Pb and other heavy metals. Leaching of such substances towards deeper soil horizons and groundwater or surface water was previously reported in the country by Lăcătușu *et al.* (2019), Domnariu *et al.* (2020) and Paltineanu *et al.* (2021, 2022). SOC content, SOC/clay and O/M SOC ratios combined are indicators that can better characterize the soil health, and the European Commission (2023a, 2023b) should take them into account to characterize the soil health in the EU states.

To improve the soil health of compacted cropland soils some practical measures should be considered to increase SOC/clay ratio and reduce BD and increase soil porosity, such as conservation tillage, incorporation of crop remains in deeper soil horizons using deeper-rooted crops, crop rotation including grass leys (Peres *et al.*, 2022), green manure application measures, etc. These measures might contribute to better carbon sequestration and global change

mitigation, macronutrient availability, creation of better conditions for the activity of fauna and microorganisms and finally having a positive impact on soil health. With respect to grassland soils, reasonable grazing is recommended in order to prevent worsening of soil physical, chemical and biological properties and implicitly decreasing runoff and leaching (Bogunovic *et al.*, 2022; Centeri, 2022). Another approach to improve soil health would be to use agroecology and permaculture (Reiff *et al.*, 2024); the last scientists recommended permaculture to offer a more adequate framework for an agroecological system that could restore biodiversity in cropland and mitigate climate change.

SOC and clay contents are essential soil properties for agriculture, the environment and climate alike. SOC/clay is already used to characterize soil health; however, it is not sufficient, and other environmental indicators need to be used to better clarify soil health, for instance, such as observed/mean SOC content, as well as an Iar to link with other soil properties, with climate and land use. Paltineanu *et al.* (2025b) have recently found relationships between SOC/clay and BD for various depths, including 0.5 m depth. The combined SOC/clay and O/M SOC ratio approach can be useful for various end-users such as policymakers, governmental and local planners, farmers, scientists and others.

Conclusions

The main idea of this study is that SOC sequestration in mineral soils depends on many factors that are specific for each pedo-climatic region and soil texture and so is the soil characterization as healthy or not healthy.

SOC/clay ratios alone cannot be used everywhere to characterize soil health, specifically for extremely textured soils. SOC/clay ratios and O/M SOC ratios combined were used to characterize the soil health of the studied soil classes under various ecological conditions across Romanian territory. The simultaneous application of these two indicators revealed specific SOC content values as reference levels for a good soil health, which decrease from the wetter climates towards the drier ones.

Altitudinal areas showing relatively homogeneous climate, vegetation and soils were grouped to represent pedo-climate regions and sub-regions using soil texture; they manifest specific SOC sequestration properties. SOC content considerably differed among these regions, and soil health should be compared within the same pedo-climatic regions that have specific SOC sequestration conditions.

Correlations were found between support points SOC values and the Iar that synthesizes the main climate variables, allowing to separate between 'healthy' soil condition and 'non-healthy' condition for any climate, vegetation floor and land use. Land uses can also be compared within each other.

Author contributions. All authors contributed to the design, data analysis and processing; the manuscript drafts were written by the corresponding author, and all authors commented, improved and approved the manuscript.

Funding statement. This work was financed by the Ministry of Agriculture and Rural Development through the ADER 2026 Sectoral Plan – Project ADER 19.1.1 (development of agricultural technologies for the main crop plants in order to intensify the carbon sequestration in soil according to the 4% initiative) – and by the Ministry of Research, Innovation and Digitalization through Project PN 23 29 06 01 (innovative tools for identifying the risks and challenges related to impact of climate change on the ecosystem services) and Project PN 23 29 05 01 (development of indicators on the role of biodiversity and functionality of soil microbiota in providing ecosystem services, improving

soil health and increasing resilience to climate). Funders had no role in the design, analysis or writing of this article.

Competing interests. None.

Ethical standards. Not applicable.

References

- Babaca G (1973) *Harta Geobotanică*. București: Institutul de Geologie și Geofizică.
- Bogunovic I, Kljak K, Dugan I, Grbesa D, Telak LJ, Duvnjak M, Kisic I, Solomun MK and Pereira P (2022) Grassland management impact on soil degradation and herbage nutritional value in a temperate humid environment. *Agriculture* **12**, 921.
- Centeri C (2022) Effects of grazing on water erosion, compaction and infiltration on Grasslands. *Hydrology* **9**, 34.
- Chahal I, Amsili JP, Saurette DD, Bower JA, Gillespie AW, van Es HM and Van Eerd LL (2024) Soil organic carbon to clay ratio in different pedoclimatic and agronomic conditions in northeastern North America. *Geoderma Regional* **39**, e00893.
- de Martonne E (1926) L'indice d'aridité. *Bulletin de l'association de Géographes Français*. **9**, 3–5.
- Domnariu H, Paltineanu C, Marica D, Lăcătușu AR, Rizea N, Lazăr R, Popa GA, Vrinceanu A and Bălăceanu C (2020) Influence of soil-texture on nitrate leaching from small-scale lysimeters toward groundwater in various environments. *Carpathian Journal of Earth and Environmental Sciences* **15**, 301–310.
- Dragu I, Bălăceanu V and Taină, S (2009) The geobotanical map of Romania, scale 1:500000. *Romanian Soil Sci. (Știința Solului)* **XLIII**, 45–69.
- Drexler S, Broll G, Flessa H and Don A (2022) Benchmarking soil organic carbon to support agricultural carbon management: a German case study. *Journal of Plant Nutrition and Soil Science* **185**, 427–440.
- Dumitru S, Paltineanu C, Vizitiu O and Domnariu H (2024) Soil available phosphorous and potassium stocks related to environmental properties, land uses and soils. *The Journal of Agriculture Science* **162**, 1–14.
- European Commission (2023a) *Proposal for a Directive of The European Parliament and of The Council on Soil Monitoring and Resilience (Soil Monitoring Law)*. Brussels: European Commission.
- European Commission (2023b) Annexes. In *Proposal for a Directive of The European Parliament And of The Council on Soil Monitoring and Resilience (Soil Monitoring Law)*. Brussels: European Commission.
- Feeney CJ, Bentley L, De Rosa D, Panagos P, Emmett BA, Thomas A and Robinson DA (2024) Benchmarking soil organic carbon (SOC) concentration provides more robust soil health assessment than the SOC/clay ratio at European scale. *Science of the Total Environment* **951**, 175642.
- Florea N, Balaceanu V, Rauta C and Canarache A (1987) Methodology of elaboration of soil science studies. Partea I, II, III. In *Redactia de Propaganda Tehnica Agricola*. Bucuresti: ICPA Bucuresti.
- Florea N and Muntenu I (2012) *Sistemul Roman de Clasificare a Solurilor – SRTS*. Craiova: Editura SITECH.
- Fujisaki K, Chapuis-Lardy L, Albrecht A, Razafimbelob T, Chotte JL and Chevallier T (2018) Data synthesis of carbon distribution in particle size fractions of tropical soils: implications for soil carbon storage potential in croplands. *Geoderma* **313**, 41–51.
- Hassink J (1997) The capacity of soils to preserve organic C and N by their association with clay and silt particles. *Plant and Soil* **191**, 77–87.
- Hassink J. and Whitmore AP (1997) A model of the physical protection of organic matter in soils. *Soil Science Society of America Journal* **61**, 131–139.
- Heikkinen J, Keskinen R, Kostensalo J and Nuutinen V (2022) Climate change induces carbon loss of arable mineral soils in boreal conditions. *Global Change Biology* **28**, 3960–3973.
- Johannes A, Matter A, Schulin R, Weisskopf P, Baveye PC and Boivin P (2017) Optimal organic carbon values for soil structure quality of arable soils. Does clay content matter? *Geoderma* **302**, 14–21.
- Lăcătușu R, Paltineanu C, Vrinceanu A and Lăcătușu AR (2019) Influence of domestic activity on the quality of groundwater and surface water in the rural built-up area of the Southern Romanian Danube Plain – a case study in the Glavacioc Catchment. *Carpathian Journal of Earth and Environmental Sciences* **14**, 323–334.
- Lal R (2004) Soil carbon sequestration impacts on global climate change and food security. *Science* **304**, 1623–1627.
- Mäkipää R, Menichetti L, Martínez-García E, Törmänen T and Lehtone A (2024) Is the organic carbon-to-clay ratio a reliable indicator of soil health? *Geoderma* **444**, 116862.
- Matus F (2021) Fine silt and clay content is the main factor defining maximal C and N accumulations in soils: a meta-analysis. *Scientific Reports* **11**, 6438.
- Mihăilescu V (1969) *Geografia Fizică a României*. București: Editura Științifică.
- New M, Lister D, Hulme M and Makin I (2002) A high-resolution data set of surface climate over global land areas. *Climate Research* **21**, 1–25.
- Paltineanu C, Chițu E, Tănăsescu N, Apostol G and Pufu MN (2000) Irrigation water requirements for some fruit trees specific to the Arges-Vedea river basin, Romania. *Acta Horticulturae* **537**, 113–119.
- Paltineanu C, Domnariu H, Marica D, Lăcătușu AR, Popa GA, Grafu I and Neagoe AD (2021) Fertilizers' leaching from the root system zone – a potential environmental risk for groundwater pollution in coarse and medium-textured soils. *Carpathian Journal of Earth and Environmental Sciences* **16**, 139–150.
- Paltineanu C, Dumitru S, Vizitiu O, Mocanu V, Lăcătușu AR, Ion S and Domnariu H (2024) Soil organic carbon and total nitrogen stocks related to land use and basic environmental properties - assessment of soil carbon sequestration potential in different ecosystems. *Catena* **246**, 108435.
- Paltineanu C, Dumitru SI and Lacatusu AR (2022) Assessing land susceptibility for possible groundwater pollution due to leaching – a case study on România. *Carpathian Journal of Earth and Environmental Sciences* **17**, 49–57.
- Paltineanu C, Lacatusu R, Vrinceanu A and Lăcătușu AR (2020a) Organic carbon sequestration and nitrogen content in forest soils versus arable soils within a heavy-clay Phaeozem landscape: a Romanian case study. *Archives of Agronomy and Soil Science* **66**, 2026–2038.
- Paltineanu C, Lacatusu R, Vrinceanu A, Vizitiu O and Lacatusu AR (2020b) Comparing soil physical properties in forest soils and arable soils within heavy-clay Phaeozems: an environmental case study in Romania. *Agroforestry Systems* **93**, 113–123.
- Paltineanu C, Mocanu V, Dumitru S and Domnariu H (2025a) Soil functions depending on soil indicators in various environments and land uses – a case study of Romania. *Carpathian Journal of Earth and Environmental Sciences* **20**, 27–46.
- Paltineanu C, Mocanu V, Vizitiu O, Domnariu H, Dumitru S (2025b) Soil organic carbon to clay ratio and bulk density related to some basic soil variables in Romania. *Soil Use and Management* **41**, e70065.
- Paltineanu C, Septar L, Gavac C, Chitu E, Oprita A, Moale C, Calciu I, Vizitiu O and Lamureanu G (2016) Characterising root density of peach trees in a semi-arid Chernozem to increase plant density. *International Agrophysics* **30**, 67–74.
- Panagos P, Borrelli P, Jones A and Robinson DA (2024) A 1 billion euro mission: a soil deal for Europe. *European Journal of Soil Science* **75**, e13466.
- Paustian K, Collier S, Baldock J, Burgess R, Creque J, DeLonge M, Dungait J, Ellert B, Frank S, Goddard T, Govaerts B, Grundy M, Henning M, Izaurrealde RC, Madaras M, McConkey B, Porzig E, Rice C, Searle R, Seavy N, Skalsky R, Mulhern W and Jahn M (2019). Quantifying carbon for agricultural soil management: from the current status toward a global soil information system. *Carbon Management* **10**, 567–587.
- Peres G, Hoeffner K, Cluzeau D, Decau M-L, Gastal F, Legras M, Louault F, Vertes F (2022) Diagnosis and determinants of grassland sustainability. Soil and the sustainability of grasslands: a virtuous circle. *Fourrages* **250**, 39–47.
- Poeplau C and Don A (2023) A simple soil organic carbon level metric beyond the organic carbon-to-clay ratio. *Soil Use and Management* **39**, 1057–1067.
- Prout JM, Shepherd KD, McGrath SP, Kirk GJD and Haefele SM (2021) What is a good level of soil organic matter? An index based on organic carbon to clay ratio. *European Journal of Soil Science* **72**, 2493–2503.
- Prout JM, Shepherd KD, McGrath SP, Kirk GJD, Hassall KL and Haefele SM (2022) Changes in organic carbon to clay ratios in different soils and land uses in England and Wales over time. *Scientific Reports* **12**, 5162.

- Rabot E, Saby NPA, Martin MP, Barré P, Chenu C, Cousin I, Arrouays D, Angers D and Bispo A (2024) Relevance of the organic carbon to clay ratio as a national soil health indicator. *Geoderma* **443**, 116829.
- Rasmussen C, Heckman K, Wieder WR, Keiluweit M, Lawrence CR, Berhe AA, Blankinship JC, Crow SE, Druhan JL, Hicks Pries CE, Marin-Spiotta E, Plante AF, Schädel C, Schimel JP, Sierra CA, Thompson A and Wagai R (2018) Beyond clay: towards an improved set of variables for predicting soil organic matter content. *Biogeochemistry* **137**, 297–306.
- Reiff J, Jungkunst HF, Mauser KM, Kampel S, Regending S, Rösch V, Zaller JG and Entling MH. (2024) Permaculture enhances carbon stocks, soil quality and biodiversity in Central Europe. *Communications Earth & Environment* **5**, 305.
- Richter D and Yaalon DH (2012) The changing model of soil. *Soil Science Society of America Journal* **76**, 766–778.
- Sauzet O, Johannes A, Deluz C, Dupla X, Matter A, Baveye OC and Boivin P (2024) The organic carbon-to-clay ratio as an indicator of soil structure vulnerability, a metric focused on the condition of soil structure. *Soil Use Management* **40**, e13060.
- Scharlemann JPW, Tanner EVJ, Hiederer R and Kapos V (2014) Global soil carbon: understanding and managing the largest terrestrial carbon pool. *Carbon Management* **5**, 81–91.
- Schmidt MWI, Torn MS, Abiven S, Dittmar T, Guggenberger G, Janssens IA, Kleber M, Kögel-Knabner I, Lehmann J, Manning DAC, Nannipieri P, Rasse DP, Weiner S and Trumbore SE (2011) Persistence of soil organic matter as an ecosystem property. *Nature* **478**, 49–56.
- Schulte RPO, Creamer RE, Donnellan T, Farrelly N, Fealy R, O'Donoghue C and O'hUallachain D (2014) Functional land management: a framework for managing soil-based ecosystem services for the sustainable intensification of agriculture. *Environmental Science & Policy* **38**, 45–58.
- Serbănescu J, Dragu J, Babaca G (1973) Harta geobotanică. – București (Institutul de Geologie și Geofizică), plansa 13 din Atlasul geologic.
- Sere G, Le Guern C, Bispo A, Layet C, Ducommun C, Clesse M, Schwartz C and Vidal-Beaudet L (2024) Selection of soil health indicators for modelling soil functions to promote smart urban planning. *Science of the Total Environment* **924**, 171347.
- Singh M, Sarkar B, Biswas B, Bolan NS and Churchman GJ (2017) Relationship between soil clay mineralogy and carbon protection capacity as influenced by temperature and moisture. *Soil Biology and Biochemistry* **109**, 95–106.
- Six J, Conant RT, Paul EA and Paustian K (2002) Stabilization mechanisms of soil organic matter: implications for C-saturation of soils. *Plant and Soil* **241**, 155–176.
- Stewart CE, Paustian K, Conant RT, Plante AF and Six J (2007) Soil carbon saturation: concept, evidence and evaluation. *Biogeochemistry* **86**, 19–31.
- Van Leeuwen JP, Saby NPA, Jones A, Louwagie G, Micheli E, Rutgers M, Schulte RPO, Spiegel H, Toth G and Creamer RE (2017) Gap assessment in current soil monitoring networks across Europe for measuring soil functions. *Environmental Research Letters* **12**, 124007.