

2-D and 3-D radiation transfer models of high-mass star formation

Barbara A. Whitney,¹ Thomas P. Robitaille², Rémy Indebetouw³,
Kenneth Wood², J. E. Bjorkman⁴ and Pia Denzmore⁵

¹Space Science Institute, 4750 Walnut St. Suite 205, Boulder, CO 80301, USA
email: bwhitney@spacescience.org

²School of Physics & Astronomy, University of St Andrews, Scotland
email: tr9@st-andrews.ac.uk, kw25@st-andrews.ac.uk

³Astronomy Department, University of Virginia, USA; email: remy@virginia.edu

⁴Ritter Observatory, University of Toledo, USA; email: jon@physics.utoledo.edu

⁵Physics and Astronomy Department, Rice University, USA; email: piadenz@rice.edu

Abstract. 2-D and 3-D radiation transfer models of forming stars generally produce bluer 1-10 μm colors than 1-D models of the same evolutionary state and envelope mass. Therefore, 1-D models of the shortwave radiation will generally estimate a lower envelope mass and later evolutionary state than multidimensional models. 1-D models are probably reasonable for very young sources, or longwave analysis ($\lambda > 100\mu\text{m}$). In our 3-D models of high-mass stars in clumpy molecular clouds, we find no correlation between the depth of the 10 μm silicate feature and the longwave ($>100\mu\text{m}$) SED (which sets the envelope mass), even when the average optical extinction of the envelope is >100 magnitudes. This is in agreement with the observations of Faison *et al.* (1998) of several UltraCompact HII (UCHII) regions, suggesting that many of these sources are more evolved than embedded protostars.

We have calculated a large grid of 2-D models and find substantial overlap between different evolutionary states in the mid-IR color-color diagrams. We have developed a model fitter to work in conjunction with the grid to analyze large datasets. This grid and fitter will be expanded and tested in 2005 and released to the public in 2006.

Keywords. radiative transfer, stars: formation, circumstellar matter

1. Introduction

An explosion of data is being collected at near- and mid-infrared wavelengths on star formation regions throughout the Galaxy and beyond. Several key projects on the *Spitzer Space Telescope* are imaging hundreds of high-mass star formations regions at unprecedented resolution and sensitivity (Benjamin *et al.* 2003, Marston *et al.* 2004, Megeath *et al.* 2004, Whitney *et al.* 2004a, Jones *et al.* 2005). This combined with submillimeter and far-infrared imaging is providing complete SEDs of several regions.

SEDs of massive star formation regions have been modeled extensively with 1-D radiative transfer codes (Faison *et al.* 1998, van der Tak *et al.* 2000, Beuther *et al.* 2002, Mueller *et al.* 2002, Williams, Fuller, & Sridharan 2005). The 1-D models do a reasonable job fitting the SEDs and radial intensity profiles at wavelengths $>100\mu\text{m}$. However, in all but the very youngest sources (Osorio, Lizano & D'Alessio 1999), 1-D models that fit the longwave data almost invariably underestimate the shortwave flux (1-20, sometimes 1-50 μm) (Mueller *et al.* 2002, van der Tak *et al.* 2000, Williams *et al.* 2005) or require large inner radii or unusual dust properties (Faison *et al.* 1998, Hatchell *et al.* 2000).

The shortwave radiation from Young Stellar Objects (YSOs) is much more susceptible to geometric effects of the surrounding circumstellar material than longwave radiation (Whitney *et al.* 2003a,b). Our approach is to estimate the most appropriate circumstellar geometries, based on theory (Shu, Adams, & Lizano 1987, Bonnell *et al.* 1998, Yorke & Sonnhalter 2002, McKee & Tan 2003) and observations (Beuther *et al.* 2004, Beltrán *et al.* 2004, Sandell & Sievers 2004, van der Tak & Menten 2005), and compute SEDs using 2-D and 3-D radiation transfer codes. We show in this paper examples of calculated SEDs from an accretion scenario (§2) and from more complicated clumpy structures (§3). These 2-D and 3-D models have the common characteristic of allowing much more shortwave radiation to escape than 1-D models, whether due to bipolar cavities or clumpy geometries. Unusual dust properties or large inner dust radii are not required to simultaneously fit the shortwave and longwave SEDs.

With these multi-dimensional models comes more parameter space to explore in fitting your favorite source. With this in mind we are in the process of computing a large grid of 2-D and 3-D radiation transfer models. We have developed a fitter that will use linear regression to find the best model from the grid, and provide statistics on the uniqueness of the fits (Robitaille *et al.* 2005, in preparation). This is discussed in §4.

2. The Accretion Scenario: 2-D Models

Our 2-D models have three components, in addition to a central illuminating source: a rotationally flattened infalling envelope, using the solution for free-fall collapse of Ulrich (1976); a flared disk, assuming the hydrostatic equilibrium solution (Shakura & Sunyaev 1973; Lynden-Bell & Pringle 1974); and partially evacuated bipolar cavities. The models include accretion luminosity in the disk and an accretion hotspot on the star with a temperature determined by the disk accretion rate (Calvet & Gullbring 1998). The models are described in several publications (Bjorkman & Wood 2001, Wood *et al.* 2002, Whitney *et al.* 2003a,b, 2004b). The flared disk geometry is likely not strictly correct when embedded in an infalling envelope but simulations have shown that the disks are vertically extended in infalling envelopes (Bate 1998). In addition, observations of disks inside envelopes show similar properties to flared disks (Wolf, Padgett, & Stapelfeldt 2003). The shape and density structure of the outflow cavities is probably our biggest uncertainty. We hope that simulations (e.g., Delamarter, Frank, & Hartmann 2000) and observations will shed light on this. The dust properties in our models can vary spatially. We attempt to include appropriate grain models for the disk, envelope, and cavity, as discussed in Whitney *et al.* 2003b.

To simulate objects in various evolutionary states we vary the envelope mass (infall rate); disk mass and radius; and cavity size and density. In more evolved sources, the envelope mass is set to zero, leaving only a disk.

A sample high-mass protostar model is shown in Figure 1. The central source is a B0 main sequence star. It is surrounded by a 500 AU radius disk of $1 M_{\odot}$ mass, and an envelope with an infall rate of $10^{-4} M_{\odot}/\text{yr}$. The centrifugal radius of the envelope, r_c , is set to the disk radius of 500 AU. The envelope has a bipolar cavity carved out with an opening angle of 15 degrees at 30,000 AU; the cavity is filled with gas and dust with a constant density of $6 \times 10^{-20} \text{ gm cm}^{-3}$ or $n_{H_2} = 18,000 \text{ cm}^{-3}$. The spectra in Figure 1 are divided into four components based on the origin of the photons. Ultimately all of the photons originated from the star, but when they are absorbed in the envelope or disk and re-emitted thermally, we say that this is their new point of origin. Scattering does not count as a point of origin so each panel includes radiation that has scattered in the disk/envelope. The top right panel shows photons that originated from the star

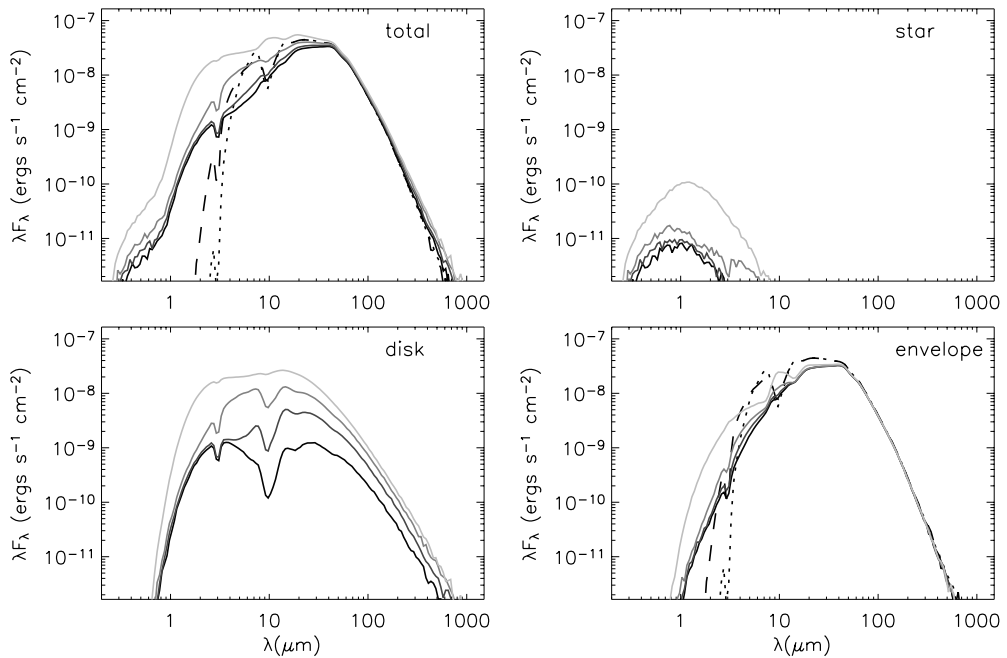


Figure 1. Model SEDs of a high mass B0 protostar. Model parameters are described in the text. The top left panel shows the total SED. The other panels show the contribution from photons whose last point of origin is from the star (top right), disk (bottom left), or envelope (bottom right). Four inclinations are plotted as different shades of grey from edge-on (black) to pole-on (light grey). The dotted and dashed lines are 1-D models, described in the text.

and were not absorbed by the circumstellar disk/envelope. The bottom left panel shows photons that originated from the disk, and the bottom right shows those originated in the infalling envelope. In each panel the four solid lines show different inclinations in different shades of grey, from edge-on (black) to pole-on (light grey). The dotted and dashed lines show 1-D models for the same envelope mass. The rotational infall model approaches a power-law solution of $\rho \sim r^{-\alpha}$, with $\alpha = 1.5$ at large radii. However, well within the centrifugal radius, r_c , $\alpha = 0.5$. The dotted line model has a single power-law for the density with $\alpha = 1.5$. The dashed line model has $\alpha = 0.5$ for $r < r_c$ and $\alpha = 1.5$ for $r > r_c$. This allows more shortwave radiation to escape but not nearly as much as the 2-D model. To get more shortwave radiation in the 1-D model would require lowering the envelope mass. This would still produce too steep a slope in the rising part of the SED, and would no longer fit the longwave SED. In short, the 1-D models can not simultaneously fit the entire SED of a 2-D geometry.

A few things to note about these spectra are 1), The disk is a significant contributor to the SED shape at $\lambda < 100\mu\text{m}$ in the 2-D model. This is partly due to the fact that it is dense and warm in the inner regions, and that the bipolar cavity allows the radiation to escape. And 2), the 1-D model is not that different from the envelope component of the 2-D model. Figure 2 shows the same 2-D model without a bipolar cavity. Here the 1-D models, especially the 2-component power-law model, are in better agreement with the 2-D model. The disk SED is narrower than in the cavity model (Figure 1) because more of the shortwave photons are reprocessed by the envelope. Since the cavity shape, size and density is uncertain, this adds uncertainty to the 2-D models. However, outflows and therefore cavities appear to be ubiquitous in even the youngest protostars, and cavities

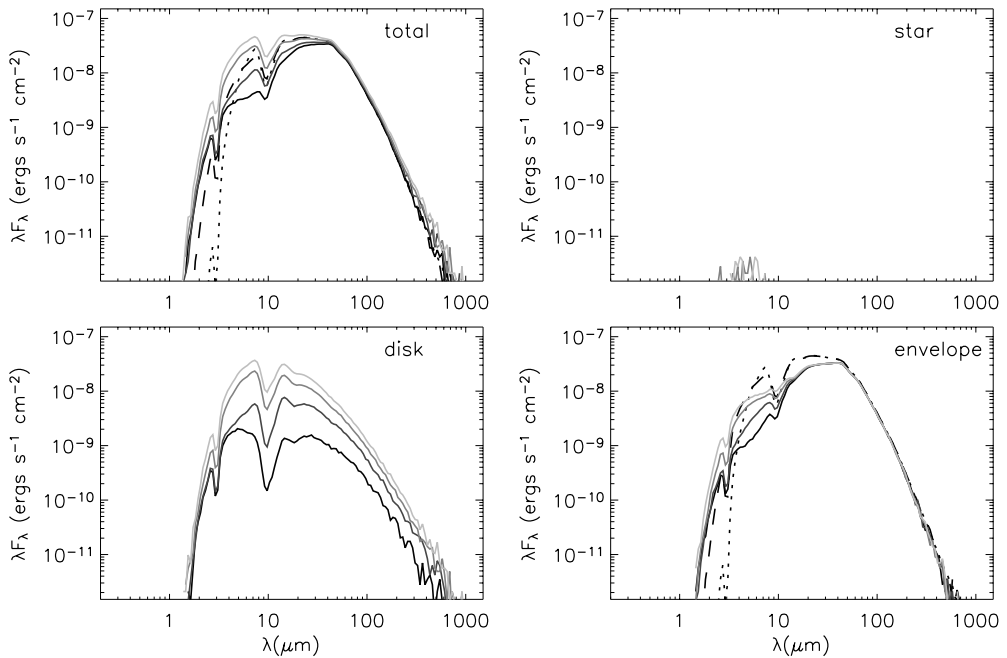


Figure 2. Same as Figure 1, but the 2-D model does not include a bipolar cavity.

may be a necessary component to allow high mass stars to form (Krumholz, McKee, & Klein 2005), so it is reasonable to include them.

Examples SEDs of disk models can be found in several of our previous publications (Wood *et al.* 2002, Whitney *et al.* 2003b, 2004b) as well as those of several other groups (Chiang & Goldreich 1997, D'Alessio *et al.* 1998, 1999, 2001; Dullemond, Dominik, & Natta 2001, Dullemond & Dominik 2004), and are not shown here.

3. 3-D Clumpy Models for UCHII Regions

Our clumpy models are motivated by previous SED models of UCHII regions which have a common feature that to fit the longwave spectra, the 1-D models tend to underestimate the shortwave flux and to give too deep a 10 μm silicate feature (Faison *et al.* 1998). 2-D and 3-D models that allow a path of escape for the shortwave photons can solve this problem.

UCHII regions are thought to be O or early B stars in a later stage of evolution than the Hyper-Compact H II regions or the hot molecular cores (Churchwell 2002). These high-mass stars are so luminous that they heat up large volumes of the interstellar medium (ISM). For example, an O5 star will heat dust up to 30 K out to a radius of 0.75 pc from the star. Thus the clumpy nature of the ISM may be important in addition to the nearby circumstellar geometry. Because the UCHII regions may be in a later evolutionary state than other high mass protostars, we chose to consider a simple model of an O star embedded in a clumpy molecular cloud (Indebetouw *et al.* 2005a). To approximate the density structure of the molecular cloud, we assume a hierarchically clumped structure with a fractal dimension of 2.6, as estimated from observations (Elmegreen & Falgarone 1996). The prescription of Elmegreen (1997) produces the fractal density structure. This structure varies depending on the choice of an initial random number seed. We place a

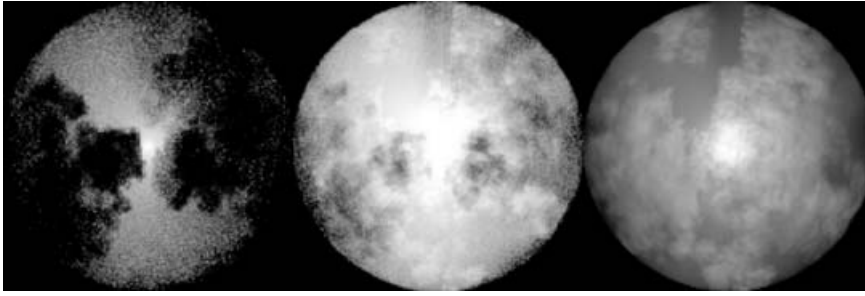


Figure 3. Images from a single viewing angle of a clumpy model at 1-3 μm (left), 3-8 μm (middle) and 24-160 μm (right).

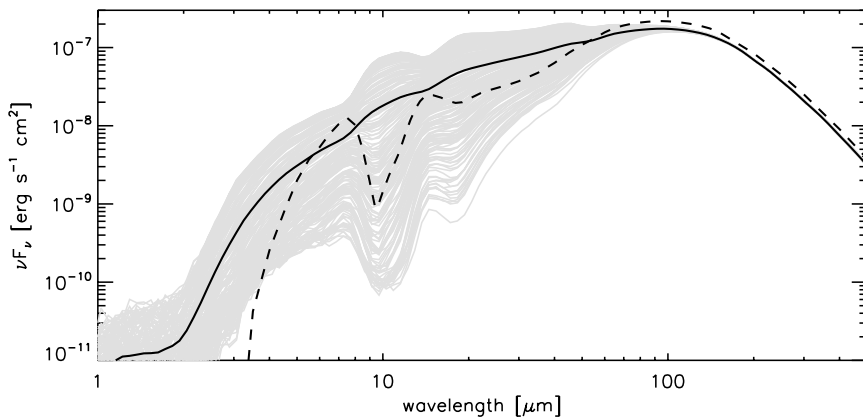


Figure 4. The grey lines show 200 sightlines from a single 3-D clumpy model. The solid line is the average of the 200 sightlines. The dashed line shows a 1-D model for the same envelope mass.

star in the center of this clumpy gas and dust, and include a smooth component along with the fractal density. For the models presented here, the fraction of the mass in the smooth component is 10%.

Figures 3 and 4 show the results from a sample model of an O5 star ($T=41000$ K) illuminating a clumpy cloud. Figure 3 shows images of the cloud and Figure 4 shows the SEDs. The inner radius is the dust destruction radius; the outer is 2.5 pc. The optical extinction through the envelope ranges from $A_V = 13$ to 401, depending on viewing angle, with an average of 131. The grey lines in Figure 4 show 200 sightlines from this model. The solid line shows the average; and the dashed line is the result from a smooth (1-D) model with the same total mass and average radial density profile (in this case, constant density). Notice the large variation in the 10 μm silicate feature with viewing angle, and the convergence of all the viewing angles for $\lambda > 100\mu\text{m}$. While the longwave SED points to a large envelope mass (50,000 M_\odot within a 2.5 pc radius), the silicate feature can be in emission for viewing angles which happen to have a low line-of-sight extinction. This is similar to observations of UCHII regions (Faison *et al.* 1998).

In our exploration of parameter space to fit the data of Faison *et al.* (1998), we varied the smooth-to-clumpy mass ratio from 0-100% (pure clumpy to smooth), the spherically-averaged radial density power law exponent from -2.5 to +1, and the fractal dimension

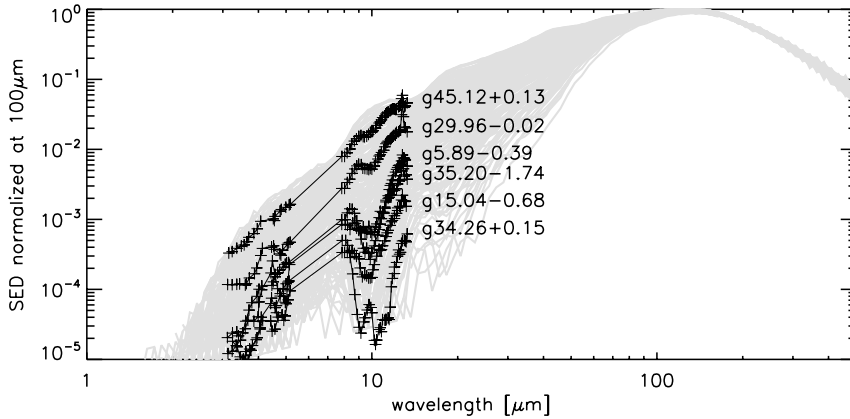


Figure 5. All of the Faisan *et al.* (1998) spectra, normalized to their 100 μm values are plotted along with all the viewing angles from a single clumpy model.

from 2.2 to 3. Our best fit models have a smooth-to-clumpy ratio of 10% and a radial density profile exponent of 0 (Indebetouw *et al.* 2005a).

Figure 5 shows the set of IR spectra of UCHII regions from Faisan *et al.* (1998) normalized to the 100 μm value. These are overlaid on the 200 sightlines from a single clumpy model. The silicate feature in the data has very similar behavior to the 3-D models. In 1-D models the depth of the silicate feature is correlated with envelope mass. In the 3-D models and these data, there is no such correlation.

The fact that these UCHII region spectra are well fit by a massive star in a molecular cloud, with a flat density profile, suggests that they are indeed more evolved than a protostar surrounded by an infalling envelope. We plan to model individual sources in the future, taking into account source illumination and geometries suggested by observations.

4. A Model Grid and Fitter

As described in the introduction, the *Spitzer Space Telescope* and other observatories are imaging a large number of star formation regions. The GLIMPSE project alone (Benjamin *et al.* 2003, Indebetouw 2005b) has imaged 220 square degrees of the inner galactic plane and produced catalogs of over 40 million sources. To help analyze these and other data sets, we are producing a large grid of 2-D and 3-D YSO models (Robitaille *et al.*, in preparation). Our current grid contains 1600 models. Since each model produces SEDs for 10 viewing angles, the total number of spectra is 16,000.

Figure 6 shows mid-IR color-color plots of the model grid. The top panels show colors in the *Spitzer* IRAC bands (3–8 μm ; Fazio *et al.* 2004), and the bottom panels include the MIPS 24 μm band (Rieke *et al.* 2004). The left panels show low mass stars ($<2M_{\odot}$). The grey points are sources with disks with inner radii set to the dust destruction radius; the black points are younger sources with envelopes in addition to disks. We will refer to these younger sources with envelopes as “protostars”, and the more evolved disk sources as “disk” sources. The protostars are plotted on top of the disk sources so the black points cover up some of the grey points, especially in the boxed region. This boxed region in the top panels was denoted by Allen *et al.* (2004) as the disk domain, based on their SED models. Since the model grid has a continuum of evolutionary states, we choose a dividing line between protostars and disks at an infall rate where the envelope is

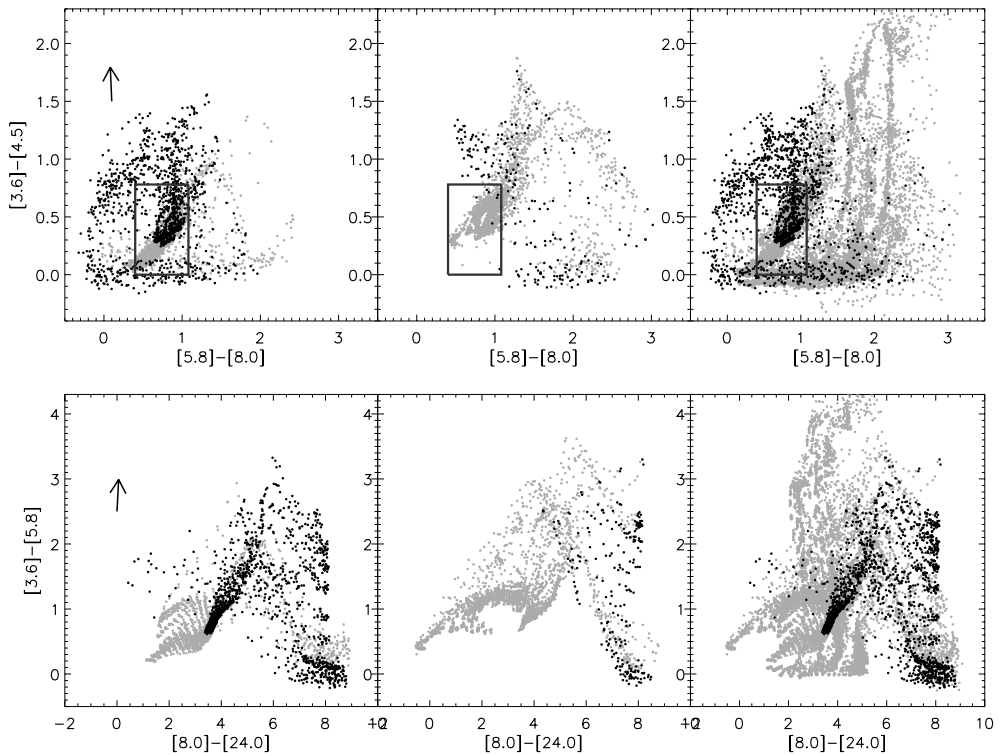


Figure 6. Color-color plots of the model grid. The grey points are disk-only sources; the black point are younger disk+envelope sources (protostars). The arrows show reddening vectors ($A_V = 20$) based on a standard interstellar extinction law. The grey box is the Allen *et al.* (2004) disk domain. Left: objects with $M_* < 2M_\odot$ and inner radii at the dust destruction radius. Middle: objects with $M_* > 2M_\odot$ and inner radii at the dust destruction radius. Right: all stellar masses and including models with inner holes of various sizes.

relatively low-mass and tenuous. For these plots, we choose the dividing line to be an infall rate of $\dot{M} = 10^{-7} M_\odot/\text{yr} \times M_*/M_\odot$. The protostars tend to be bluer in $[5.8]-[8.0]$ than those presented by Allen *et al.* This is likely due to our inclusion of bipolar cavities which make the sources more blue at these wavelengths, as Figures 1 and 2 show. In fact, the protostars tend to be bluer than the disks at $[5.8]-[8.0]$. The protostars are redder than most of the disks at $[8.0]-[24]$ (bottom left panel) as expected.

The middle panels of Figure 6 shows color-color plots for sources with stellar mass greater than $2 M_\odot$ and inner radii at the dust destruction radius. These show a larger spread in colors than the low-mass sources, with a redder tail at $[5.8]-[8.0]$. This is likely due both to higher stellar temperatures and the larger spatial scale in the circumstellar temperature profile in the high-mass sources (Whitney *et al.* 2004b). These panels also show that we didn't include enough high mass protostars in our grid which will be rectified in the near future. As in the low-mass sources, the protostars are redder at $[8.0]-[24]$ than most of the disks.

The left and middle panels of Figure 6 show some separation in evolutionary stage with color and perhaps mass, which is encouraging. The right panels show an interesting feature when disks with inner holes are included. These are redder in the *Spitzer* IRAC bands than even most of the protostars, due to a lack of hot dust. Even very low mass disks or remnant dust surrounding luminous sources can be quite bright and have very

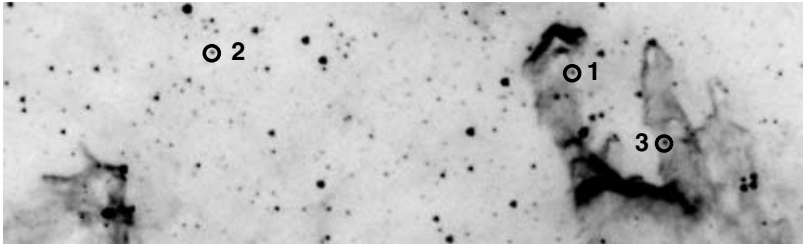


Figure 7. GLIMPSE 8 μm image of pillars in the M16 star formation region. The three sources modeled in Figure 8 are labeled by numbers 1-3.

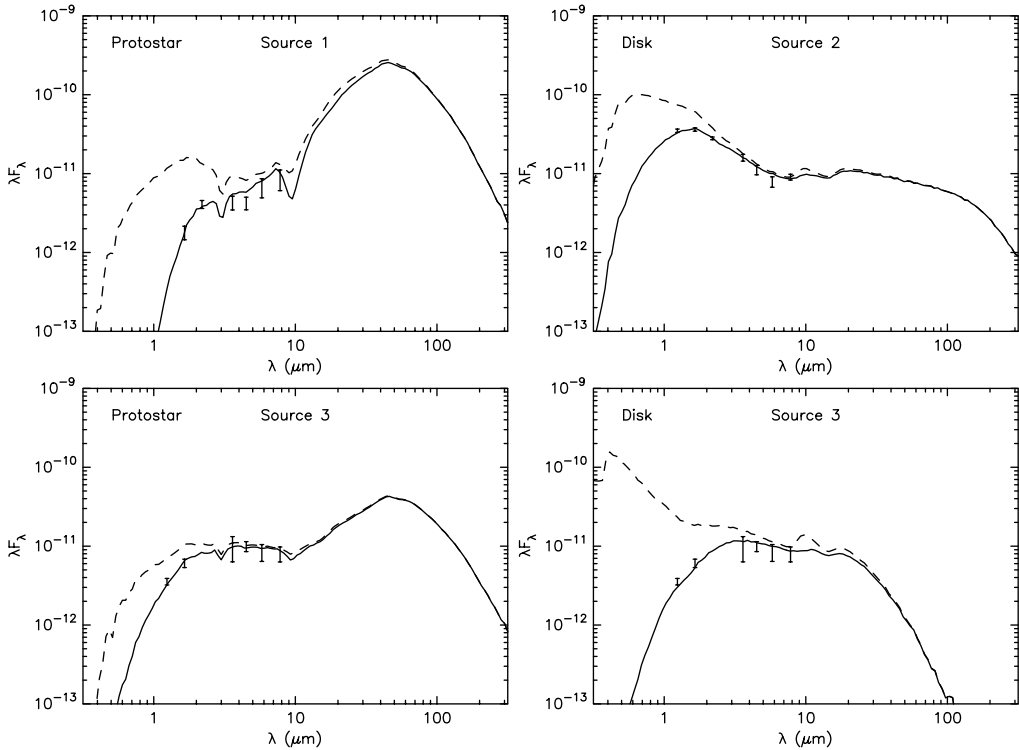


Figure 8. Data and models for the three sources labeled in Figure 7. The 2MASS and IRAC data are plotted with error bars. The best model fit including extinction is shown as a solid line; the same model without extinction is shown as a dashed line. The model parameters are described in the text.

red colors. These should not be mistakenly interpreted as embedded protostars based on their red IRAC colors. The bottom right panel shows that these disks are reasonably well-separated from protostars when the [24] μm data point is included, though there is a fair amount of overlap (the protostars are overplotted on the disk sources and hide some of them).

We have developed a fitting program that uses linear regression to find the model spectrum that best agrees with an observed SED. The model SEDs are convolved with the broadband filter functions of the dataset (any can be included) before the fitter program is run. The fitting program produces statistics on quality of fits and uniqueness.

When the wavelength range being fit is narrow (for example, 2MASS \dagger /IRAC data at 1–8 μm), a single observed SED can have 100 good fits, so we produce histograms of model parameters that fit a given source. The fitter simultaneously fits a foreground extinction along with the best SED fit. Thus the program can also be used to map extinction in a region, as shown in Indebetouw (2005b). Knowing the distance to an observed cluster improves the model fits by better constraining the luminosity of the sources and narrowing the range of good fits. This also improves the stellar mass estimates.

Figures 7 and 8 show some results of our model fitter. The GLIMPSE IRAC and 2MASS SEDs of three sources identified in Figure 7 are plotted in Figure 8 along with the best model fits. Source #1 is well fit by a protostar with $M_\star = 1.9M_\odot$, $T_\star = 4200$ K, an envelope infall rate of $10^{-4}M_\odot/\text{yr}$, and foreground extinction $A_V = 13$. Source #2 is well fit by a star with $M_\star = 3M_\odot$, $T_\star = 5000$ K, a disk with mass of $0.04M_\odot$ and outer radius of 300 AU, and $A_V = 3$. The third source (bottom panels) did not produce a unique fit. The bottom left panel shows a protostar model for this source with $M_\star = 1.2M_\odot$, $T_\star = 4050$ K, envelope infall rate $4 \times 10^{-6}M_\odot/\text{yr}$, and $A_V = 3$. The bottom right panel shows a disk model for this source with $M_\star = 2.5M_\odot$, $T_\star = 10,500$ K, disk mass of $6 \times 10^{-5}M_\odot$, and $A_V = 8$. Often the ambiguous fits trade off stellar temperature and foreground extinction with evolutionary state (i.e., a cooler T_\star protostar with lower A_V has a similar 1–10 μm spectrum as a hotter T_\star disk source with a larger A_V). Clearly, longer-wave observations would distinguish between these two models. Also, note the large range of A_V between the two models.

5. Conclusions

The process of forming a star is at a minimum a 2-dimensional process. In the accretion scenario, angular momentum conservation produces a rotationally flattened envelope and a disk. Some combination of angular momentum and magnetic fields produces bipolar jets and outflows very early on (Shepherd, 2005 and references therein). And turbulence and various dynamical effects produces clumps and other asymmetric structures. We've shown that 2-D and 3-D SED models can produce bluer near- and mid-IR colors than 1-D models; and the depth of the 10 μm silicate feature is uncorrelated with the envelope mass in some clumpy geometries. We believe that multi-dimensional models are required to interpret the shortwave observations in all but the youngest, most embedded sources. To aid in the interpretation of the data, we are producing a large grid of models. This meeting provided a wealth of useful information that will be used to improve our grid of models. After our model fitter has been tested, we will make it publicly available by web access. Users will be able to submit datasets as batch jobs. We hope to have this set up by early 2006.

Acknowledgements

We are grateful to Ed Churchwell and John Mathis for many useful discussions on high mass star formation and clumps. This work was supported in part by a NASA LTSA grant NAG5-8933 (BAW), a *Spitzer* Fellowship (RI), and a UK PPARC Advanced Fellowship (KW).

\dagger This publication makes use of data products from the Two Micron All Sky Survey, which is a joint project of the University of Massachusetts and IPAC/Caltech, funded by NASA and the NSF

References

- Allen, L. E., *et al.* 2004, ApJS, 154, 363
- Bate, M. R. 1998, ApJL, 508, L95
- Benjamin, R.A., *et al.* 2003, PASP, 115, 953
- Beuther, H., Schilke, P., Menten, K.M., Motte, F., Sridharan, T.K., & Wyrowski, F. 2002, ApJ, 566, 945
- Beuther *et al.* 2004, ApJL, 616, L23
- Beltrán, M. T., Cesaroni, R., Neri, R., Codella, C., Furuya, R. S., Testi, L., & Olmi, L. 2004, ApJL, 601, L187
- Bjorkman, J. E., & Wood, K. 2001, ApJ, 554, 615
- Bonnell, I.A., Bate, M.R., & Zinnecker, H. 1998, MNRAS, 298, 93
- Calvet, N., & Gullbring, E. 1998, ApJ, 509, 802
- Chiang, E. I. & Goldreich, P. 1997, ApJ, 490, 368
- Churchwell, E. 2002, ARA&A, 40, 27
- D'Alessio, P., Cantó, J., Calvet, N., & Lizano, S. 1998, ApJ, 500, 411
- D'Alessio, P., Calvet, N., Hartmann, L., Lizano, S., & Canto, J. 1999, ApJ, 527, 893
- D'Alessio, P., Calvet, N., & Hartmann, L. 2001, ApJ, 553, 321
- Delamarter, G., Frank, A., & Hartmann, L. 2000, ApJ, 530, 923
- Dullemond, C. P., Dominik, C., & Natta, A. 2001, ApJ, 560, 957
- Dullemond, C.P., & Dominik, C. 2004, A&A, 421, 1075
- Elmegreen, B.G., & Falgarone, E. 1996, ApJ, 471, 816
- Elmegreen, B. G. 1997, ApJ, 477, 196
- Faison, M., Churchwell, E., Hofner, P., Hackwell, J., Lynch, D. K., & Russell, R. W. 1998, ApJ, 500, 280 (F98)
- Fazio, G.G. *et al.*, 2004, ApJS, 154, 10
- Hatchell, J., Fuller, G.A., Millar, T.J., Thompson, M.A., & Macdonald, G.H. 2000, A&A, 357, 637
- Indebetouw, R., Whitney, B.A., Johnson, K.E., & Wood, K. 2005, ApJ, submitted
- Indebetouw, R. *et al.*, this volume.
- Jones, T.J., Woodward, C.E., Boyer, M.L., Gehrz, R.D., & Polomski, E. 2005, ApJ, 620, 731
- Krumholz, M. R., McKee, C. F., & Klein, R.I. 2005, ApJL, 618, L33
- Lynden-Bell, D. & Pringle, J. E. 1974, MNRAS, 168, 603
- McKee, C.F., & Tan, J.C. 2003, ApJ, 585, 850
- Mueller, K.E., Shirley, Y.L., Evans, N.J., II, Jacobson, H.R. 2002, ApJS, 143, 469
- Marston, A.P. *et al.* 2004, ApJS, 154, 333
- Megeath, S.T., *et al.* 2004, ApJS, 154, 367
- Osorio, M., Lizano, S., & D'Alessio, P. 1999, ApJ, 525, 808
- Rieke, G.H. *et al.* 2004, ApJS, 154, 25
- Sandell, G., & Sievers, A. 2004, ApJ, 600, 269
- Shakura, N.I., & Sunyaev, R.A. 1973, A&A, 24, 337
- Shu, F.H., Adams, F.C., & Lizano, S. 1987, ARA&A, 25, 23
- Ulrich, R. K. 1976, ApJ, 210, 377
- van der Tak, F.F.S., van Dishoeck, E.F., Evans, N.J., & Blake, G. A. 2000, ApJ, 537, 283
- van der Tak, F.F.S., & Menten, K.M. 2005, A&A, in press, astro-ph/0504026
- Whitney, B. A., Wood, K., Bjorkman, J. E., & Wolff, M. J. 2003a, ApJ, 591, 1049
- Whitney, B. A., Wood, K., Bjorkman, J. E., & Cohen, M. 2003b, ApJ, 598, 1099
- Whitney, B.A. *et al.* 2004a, ApJS, 154, 315
- Whitney, B. A., Indebetouw, R., Bjorkman, J. E., & Wood, K. 2004b, ApJ, 617, 1177
- Williams, S.J., Fuller, G.A., & Sridharan, T.K. 2005, A&A, 434, 257
- Wolf, S., Padgett, D. L., & Stapelfeldt, K. R. 2003, ApJ, 588, 373
- Shepherd, D. 2005, this volume
- Wood, K., Wolff, M. J., Bjorkman, J. E., & Whitney, B. 2002, ApJ, 564, 887
- Yorke, H.W., & Sonnhalter, C. 2002, ApJ, 569, 846