

# *Cryptosporidium* infecting wild cricetid rodents from the subfamilies Arvicolinae and Neotominae

BRIANNA L. S. STENGER<sup>1,2,3,†</sup>, MICHAELA HORČIČKOVÁ<sup>4,5,†</sup>, MARK E. CLARK<sup>2,3</sup>, MARTIN KVÁČ<sup>4,5</sup>, ŠÁRKA ČONDLOVÁ<sup>4,5</sup>, EAKALAK KHAN<sup>3,6</sup>, GIOVANNI WIDMER<sup>7</sup>, LIHUA XIAO<sup>8</sup>, CATHERINE W. GIDDINGS<sup>1</sup>, CHRISTOPHER PENNIL<sup>1</sup>, MICHAL STANKO<sup>9</sup>, BOHUMIL SAK<sup>4</sup> and JOHN M. MCEVOY<sup>1,3,\*</sup>

<sup>1</sup> Department of Microbiological Sciences, North Dakota State University, Fargo, ND, USA

<sup>2</sup> Department of Biological Sciences, North Dakota State University, Fargo, ND, USA

<sup>3</sup> Environmental and Conservation Sciences Program, North Dakota State University, Fargo, ND, USA

<sup>4</sup> Institute of Parasitology, Biology Centre of Czech Academy of Sciences, České Budějovice, Czech Republic

<sup>5</sup> Faculty of Agriculture, University of South Bohemia in České Budějovice, Czech, Republic

<sup>6</sup> Department of Civil and Environmental Engineering, North Dakota State University, Fargo, ND, USA

<sup>7</sup> Department of Infectious Disease and Global Health, Tufts University Cummings School of Veterinary Medicine, North Grafton, MA, USA

<sup>8</sup> Centers for Disease Control and Prevention, Atlanta, GA, USA

<sup>9</sup> Slovak Academy of Sciences, Košice, Slovakia

(Received 5 April 2017; revised 19 July 2017; accepted 31 July 2017; first published online 5 September 2017)

## SUMMARY

We undertook a study on *Cryptosporidium* spp. in wild cricetid rodents. Fecal samples were collected from meadow voles (*Microtus pennsylvanicus*), southern red-backed voles (*Myodes gapperi*), woodland voles (*Microtus pinetorum*), muskrats (*Ondatra zibethicus*) and *Peromyscus* spp. mice in North America, and from bank voles (*Myodes glareolus*) and common voles (*Microtus arvalis*) in Europe. Isolates were characterized by sequence and phylogenetic analyses of the small subunit ribosomal RNA (SSU) and actin genes. Overall, 33.2% (362/1089) of cricetids tested positive for *Cryptosporidium*, with a greater prevalence in cricetids from North America (50.7%; 302/596) than Europe (12.1%; 60/493). Principal Coordinate analysis separated SSU sequences into three major groups (G1–G3), each represented by sequences from North American and European cricetids. A maximum likelihood tree of SSU sequences had low bootstrap support and showed G1 to be more heterogeneous than G2 or G3. Actin and concatenated actin-SSU trees, which were better resolved and had higher bootstrap support than the SSU phylogeny, showed that closely related cricetid hosts in Europe and North America are infected with closely related *Cryptosporidium* genotypes. Cricetids were not major reservoirs of human pathogenic *Cryptosporidium* spp.

Key words: *Cryptosporidium*, Cricetidae, phylogenetics, biogeography.

## INTRODUCTION

*Cryptosporidium* is a genus of apicomplexan parasites with species that infect all major vertebrate groups (Fayer, 2010; Ryan, 2010; Kváč *et al.* 2014). Infections can result in the diarrhoeal disease cryptosporidiosis, which can be chronic and even fatal in the absence of a competent immune response (Checkley *et al.* 2015).

Early efforts to characterize *Cryptosporidium* – using descriptions of oocyst morphology, identification of surface antigens and isoenzyme analyses – lacked the resolution necessary to differentiate taxa infecting closely related hosts (Nichols *et al.* 1991; Nina *et al.* 1992; Ogunkolade *et al.* 1993; McLauchlin *et al.* 1998). Molecular tools have revealed tremendous genetic diversity in the genus *Cryptosporidium*, and

more than 30 species and tens of genotypes have been described to date (Ryan *et al.* 2014; Holubová *et al.* 2016; Ježková *et al.* 2016; Kváč *et al.* 2016). One hypothesis holds that *Cryptosporidium* diversification is promoted by coevolutionary interactions with hosts, and this is supported by the findings that some closely related *Cryptosporidium* spp. infect a narrow range of closely related hosts. However, other species can infect a broad range of distantly related hosts, suggesting that coevolution is not the only driver of *Cryptosporidium* diversification.

Rodents are a useful model to study *Cryptosporidium* diversification. These ubiquitous mammals comprise about 40% of the mammalian diversity, with over 2200 species in 31 families and 481 genera, occupy a wide range of habitats, are extremely fecund and host diverse *Cryptosporidium* species and genotypes (Kváč *et al.* 2014). In addition to hosting species with a broad host specificity, including *Cryptosporidium muris*, *Cryptosporidium parvum*, and *Cryptosporidium ubiquitum*, rodents

\* Corresponding author: PO Box 6050, Dept. 7690, Fargo, ND, 58108-6050, USA. E-mail: [john.mcevoy@ndsu.edu](mailto:john.mcevoy@ndsu.edu)

† These authors contributed equally to this work.

host more than 20 *Cryptosporidium* genotypes that appear to have a relatively narrow host range. For example, rats are commonly infected with *Cryptosporidium* rat genotypes I–IV, which have not been detected in other rodent species (Kimura *et al.* 2007; Paparini *et al.* 2012; Ng-Hublin *et al.* 2013; Zhao *et al.* 2015). Similarly, different species/genotypes of *Cryptosporidium* infect the squirrel tribes Marmotini and Sciurini (Stenger *et al.* 2015b). Narrowly specific *Cryptosporidium* species/genotypes may diverge as a consequence of host divergence, as was observed in the house mouse, where two subspecies (*Mus musculus musculus* and *M. m. domesticus*) that diverged 0.5 Mya (Bonhomme and Searle, 2012) hosted different subtypes of *C. tyzzeri* (Kváč *et al.* 2013).

The Cricetidae, at almost 600 species, is the second-largest family of mammals, comprising the subfamilies Cricetinae (hamsters), Sigmodontinae (including the cotton rat, climbing mice and water mice), Tylomyinae (including vesper rats and climbing rats), Neotominae (including deer mice and woodrats) and Arvicolinae (voles, muskrats and lemmings). The Cricetinae are exclusively Palearctic, being found in central and eastern Europe and parts of Asia. The Neotominae, Thyomyinae and Sigmodontinae are Nearctic/Neotropical, and are predominantly found in North, Central and South America, respectively. The Holarctic Arvicolinae underwent an explosive radiation, resulting in 151 extant species in 28 genera, as they dispersed from Asia to Europe and North America (NA) (Steppan *et al.* 2004; Wilson and Reeder, 2005).

Several *Cryptosporidium* genotypes appear to be specific to cricetids, and some may be specific for cricetid subfamilies. *Cryptosporidium* vole genotype and muskrat genotypes I and II have been reported only in arvicolines (voles and muskrats). Similarly, *Cryptosporidium* deer mouse genotypes I–IV appear mostly restricted to deer mice, in the subfamily Neotominae (Perz and Le Blancq, 2001; Xiao *et al.* 2002; Zhou *et al.* 2004; Feng *et al.* 2007; Ziegler *et al.* 2007; Lv *et al.* 2009; Robinson *et al.* 2011; Ruecker *et al.* 2012).

Here we report a study on *Cryptosporidium* infecting wild cricetid rodent populations in NA (at sites in North Dakota, Minnesota, South Dakota and Tennessee) and Europe (at sites in the Czech Republic and Slovakia). Data from the study contribute to the understanding of *Cryptosporidium* evolution in closely related hosts on different continents.

## MATERIALS AND METHODS

### Ethics statement

The research was conducted under ethical protocols approved by the Institute of Parasitology, Biology Centre and Central Commission for Animal

Welfare, Czech Republic (protocol nos. 071/2010 and 114/2013) and North Dakota State University Institutional Animal Care and Use Committee (protocol A11060).

**Sample collection – NA.** Meadow voles (*Microtus pennsylvanicus*), southern red-backed voles (*Myodes gapperi*), muskrats (*Ondatra zibethicus*) and *Peromyscus* mice (deer mice, *Peromyscus maniculatus* and white-footed mice, *Peromyscus leucopus*, were not distinguished in this study) were sampled in North Dakota, South Dakota and Minnesota. Woodland voles (*Microtus pinetorum*) and *Peromyscus* mice were sampled in an area Tennessee. Except for muskrats, North American cricetids were live captured in Sherman box traps and fecal samples were collected from the trap or directly from the animal during handling. Captured animals were ear-tagged and released. Animals that died in traps were dissected and samples of intestinal contents were examined. Muskrats were sampled by collecting feces from muskrat mounds. All samples were stored at 4 °C prior to DNA extraction.

**Sample collection – Europe (EU).** Common voles (*Microtus arvalis*) and bank voles (*Myodes glareolus*) were captured in Sherman box traps in the Czech Republic and Slovakia. Trapped animals were euthanized and samples were collected from the intestines following dissection.

**Polymerase chain reaction amplification and sequencing.** For North American samples, DNA was isolated from samples by alkaline digestion, phenol-chloroform extraction and purified using a QIAmp DNA Stool Mini Kit (Qiagen, Valencia, CA) as previously described (Peng *et al.* 2003; Feltus *et al.* 2006). For European samples, 200 mg of feces was homogenized by bead disruption using FastPrep-24 (Biospec Products, Bartlesville, OK) for 60 s at a speed 5.5 m/s. Total DNA was extracted using the PSP Spin Stool DNA Kit (Invitex, Berlin, Germany).

DNA was stored at –20 °C until used in PCR assays. Fragments of the *Cryptosporidium* small subunit (SSU) and actin genes were amplified using nested PCR assays as described previously (Xiao *et al.* 2001; Sulaiman *et al.* 2002). Secondary products were visualized with SYBR Green or ethidium bromide following electrophoresis on an agarose gel.

PCR products were purified (Wizard SV, Promega, Madison, WI or GenElute™ Gel Extraction Kit, Sigma-Aldrich, St. Louis, MO) and sequenced in both directions with secondary primers using a BigDye Terminator v3.1 cycle sequencing kit in an ABI Prism 3130 genetic analyzer (Applied Biosystems, Carlsbad, CA). Sequences were assembled using SeqMan (DNASTar, Madison, WI).

**Phylogenetic analysis.** Sequences were aligned using the MAFFT version 7 online server with automatic selection of alignment strategy (<http://mafft.cbrc.jp/alignment/server/>) (Kato and Standley, 2013). Alignments were manually edited and phylogenetic analyses were performed using MEGA 6.0 (Tamura *et al.* 2013). The evolutionary history of aligned sequences was inferred using the maximum likelihood (ML) method (Saitou and Nei, 1987), with the substitution model that best fit the alignment selected using the Bayesian information criterion. The Hasegawa–Kishino–Yano model (Hasegawa *et al.* 1985) was selected for SSU alignments, and the general time reversible model (Tavaré, 1986) was selected for actin and concatenated actin-SSU alignments. Both models were used under an assumption that rate variation among sites was gamma distributed. A bootstrap consensus tree was inferred from 1000 pseudoreplicates. Phylogenetic analyses, including analysis of substitution model goodness of fit, were carried out using MEGA 6.0. Phylogenetic trees were edited for style using Adobe Illustrator CS5.1 (Adobe Systems, Inc., San Jose, CA).

**Principal coordinate analysis.** Sequences were aligned with ClustalW (Thompson *et al.* 1994) and manually trimmed to remove terminal nucleotides not present in all sequences. For each alignment (SSU, actin, and concatenated SSU-actin sequences), a matrix of pairwise distances between sequences was constructed using the program *dist.seqs* in *mothur* (Schloss *et al.* 2009). Distance matrices were imported into GenAlEx (Peakall and Smouse, 2012) and distances visualized by Principal Coordinate analysis (PCoA).

**Statistical analysis.** Prevalence was calculated by dividing the number of positive individuals by the total number of individuals sampled. Differences in *Cryptosporidium* prevalence were determined by Chi-square analysis using a 5% significance level. Analyses were performed using the statistical program R (R Core, 2013). The statistical significance of clusters visualized by PCoA was tested using ANOSIM in *mothur* (Clarke, 1993).

## RESULTS

In total 1089 animals from the family Cricetidae were sampled at locations in NA (596 animals) and Europe (493 animals). A total of 681 samples were obtained from the 596 North American cricetids. The greater number of samples than animals was due to some animals from NA being sampled multiple times. All animals from Europe were sampled only once. Overall, 33.2% (362/1089) of cricetids tested positive for *Cryptosporidium*, with a greater prevalence in cricetids from NA (50.7%; 302/596)

than Europe (12.1%; 60/493). Excluding repeat samples from the same animal, the prevalence in North American cricetids was 48.7% (290/596). In NA, the lowest prevalence was in muskrats (9.5%; 4/42) ( $P < 0.05$ ). *Peromyscus* mice (56.6%; 99/175), southern red-backed voles (55.6%; 15/27), meadow voles (52.4%; 163/311) and woodland voles (51.2%; 21/41) had a similar prevalence. In Europe, the prevalence in common voles and bank voles was 14.2% (50/353) and 7.1% (10/140), respectively ( $P < 0.05$ ).

### Analysis of SSU sequences

*Cryptosporidium* SSU sequences were obtained from 126 animals and relationships among sequences were examined using PCoA and ML analysis (online Supplementary Fig. S1).

We used PCoA to visualize the matrix of pairwise genetic distances in a simplified, two-dimensional Euclidean space. Sixty-three percent of the SSU sequence variation was explained by two principal Coordinates, along which sequences separated into three groups that were statistically different from each other (G1–G3) (online Supplementary Fig. S1). These PCoA groups were overlaid on a ML tree constructed from *Cryptosporidium* SSU sequences (online Supplementary Fig. S1).

G1 included 97 sequences from all hosts and geographic locations examined in the study. Within G1, sequences from 28 meadow voles, 20 common voles, a muskrat and a *Peromyscus* mouse clustered with muskrat genotype II in the ML tree. G1 also included sequences clustering with *C. ubiquitum*, deer mouse genotypes I–IV, W29 genotype, fox genotype, vole genotype, chipmunk genotype IV and sequences that did not cluster with previously described species or genotypes.

Sequences from G2 formed a reasonably well-supported clade in the ML tree, within which sequences from meadow voles in NA and common voles in Europe formed separate clusters. This clade also included *Cryptosporidium* W12 genotype (AY007254), which was previously isolated from surface water in New York but has not been reported previously in an animal host. None of the sequences in the present study shared 100% identity with the W12 genotype.

Nested within a well-supported clade that included all sequences from G3, sequences from meadow voles and a muskrat in NA formed a sister group with sequences from common voles in Europe. The North American group included sequences previously identified as muskrat genotype I. A third group in this clade comprised sequences from bank voles in Europe, a sequence previously isolated from a yellow-necked mouse (*Apodemus flavicollis*) in Sweden (JN172968), and a sequence isolated from water in the UK (HM015876).

In some cases, divergent SSU gene sequences were obtained from different samples of the same animal. Sequences from three samples of the same *Peromyscus* mouse (1835-Pero-NA, 1851-Pero-NA, and 1852-Pero-NA) shared between 99.1 and 99.6% identity with each other and clustered with deer mouse genotype IV, which was previously isolated from a *Peromyscus* mouse in New York (EF641019). The samples were collected on 2 consecutive days: 1835-Pero-NA was obtained from the feces of the animal on the first day. The animal was released and was recaptured the next day, at which point the animal died in the trap, was dissected and 1851-Pero-NA and 1852-Pero-NA were obtained from the intestine. A fourth sequence (1848-Pero-NA) from the same animal, which was isolated from feces on the second day, clustered with the W29 genotype (JQ413356) as a sister group to deer mouse genotype IV, sharing between 98.1% and 98.5% sequence identity with 1835-Pero-NA, 1851-Pero-NA and 1852-Pero-NA.

#### *Analysis of actin and concatenated actin-SSU gene sequences*

Actin sequences were obtained from 70 samples and relationships among sequences were determined by PCoA and ML analysis. Sequences separated into five statistically different groups in the PCoA (G1-G5), and these groups were highlighted on the ML tree (Fig. 1 and online Supplementary Fig. S2).

Sequences in G1 formed three major clades in the ML tree (labelled A-C in Fig. 1 and online Supplementary Fig. S2). Clade A, which had 71% bootstrap support, comprised four closely-related subclades. One of the subclades comprised entirely of sequences from bank voles in Europe. Two subclades included sequences from North American meadow voles only, and one subclade contained sequences from five meadow voles and a *Peromyscus* mouse in this study and a sequence previously identified as muskrat genotype II. Clade B had 89% bootstrap support and included four subclades, two of which formed closely related sister groups. One of the sister groups included a sequence from a North American red-backed vole (2031-Myga-NA) and a sequence previously isolated from a North American eastern chipmunk. The other sister group comprised three identical sequences from bank voles in the Czech Republic. A third subclade comprised sequences from a meadow vole and woodland vole in NA. A fourth subclade included sequences from the common vole in Europe. Clade C, which had 94% bootstrap support, included identical sequences from a common vole and two bank voles in Europe, and a sequence from a red-backed vole in NA that clustered separately, sharing 99.0% identity with the sequences from European voles.

Sequences in G2 formed two clades. One of the clades included sequences from meadow voles that were identified as the vole genotype in the SSU phylogeny, a sequence from a woodland vole (2331-Mipi-NA) and a sequence from a red-backed vole (1937-Myga-NA). A second clade in G2 contained 1543-Pero-NA from a *Peromyscus* mouse and a sequence previously identified as deer mouse genotype II; this clade was more closely related to sequences from *Peromyscus* mice in G3 than sequences from voles in G2. The four sequences from *Peromyscus* mice in G3 included 1835-Pero-NA and 1848-Pero-NA, which were from a single animal and were identified as deer mouse genotype IV and W29 genotype, respectively, at the SSU locus (online Supplementary Fig. S1). G4 and G5 formed well-supported clades in the ML tree, and nested within each were sequences that clustered by host/geographic location.

PCoA and ML analysis of SSU and actin gene sequences in concatenation produced similar groupings to actin sequences. The exception was 1543-Pero-NA1, which was not part of a PCoA group in the analysis of concatenated sequences (Fig. 2 and online Supplementary Fig. S3).

#### DISCUSSION

*Cryptosporidium* diversity may result, in part, from a close association with diverging host species. This model of evolution is supported by evidence that *Cryptosporidium* has diverged with subspecies of the house mouse, *Mus musculus* (Kváč *et al.* 2013). Two subspecies, *Mus musculus musculus* and *M. m. domesticus*, which diverged after becoming geographically isolated about 0.5 Mya, host genetically and biologically distinct subtypes of *C. tyzzeri*, and the subtypes have remained host-specific despite the establishment of secondary contact between *M. m. musculus* and *M. m. domesticus*. The study by Kváč *et al.* (2013) demonstrated that knowledge of the timing of host divergence can be used to understand the dynamics of parasite divergence. Using a similar approach in the present study, we examined *Cryptosporidium* diversity in rodent species from the family Cricetidae.

*Cryptosporidium* from voles exhibited considerable SSU sequence heterogeneity, which is consistent with previous studies on *Cryptosporidium* from voles and muskrats. Most sequences clustered with previously named *Cryptosporidium* genotypes, including muskrat genotype I, muskrat genotype II, vole genotype and fox genotype. Sequences clustering with muskrat genotypes I and II were rarely detected in hosts other than voles, which is consistent with previous reports that these genotypes primarily infect voles, and are found less frequently in muskrats, *Peromyscus* mice and foxes (Zhou *et al.* 2004; Feng *et al.* 2007; Ziegler *et al.* 2007; Robinson

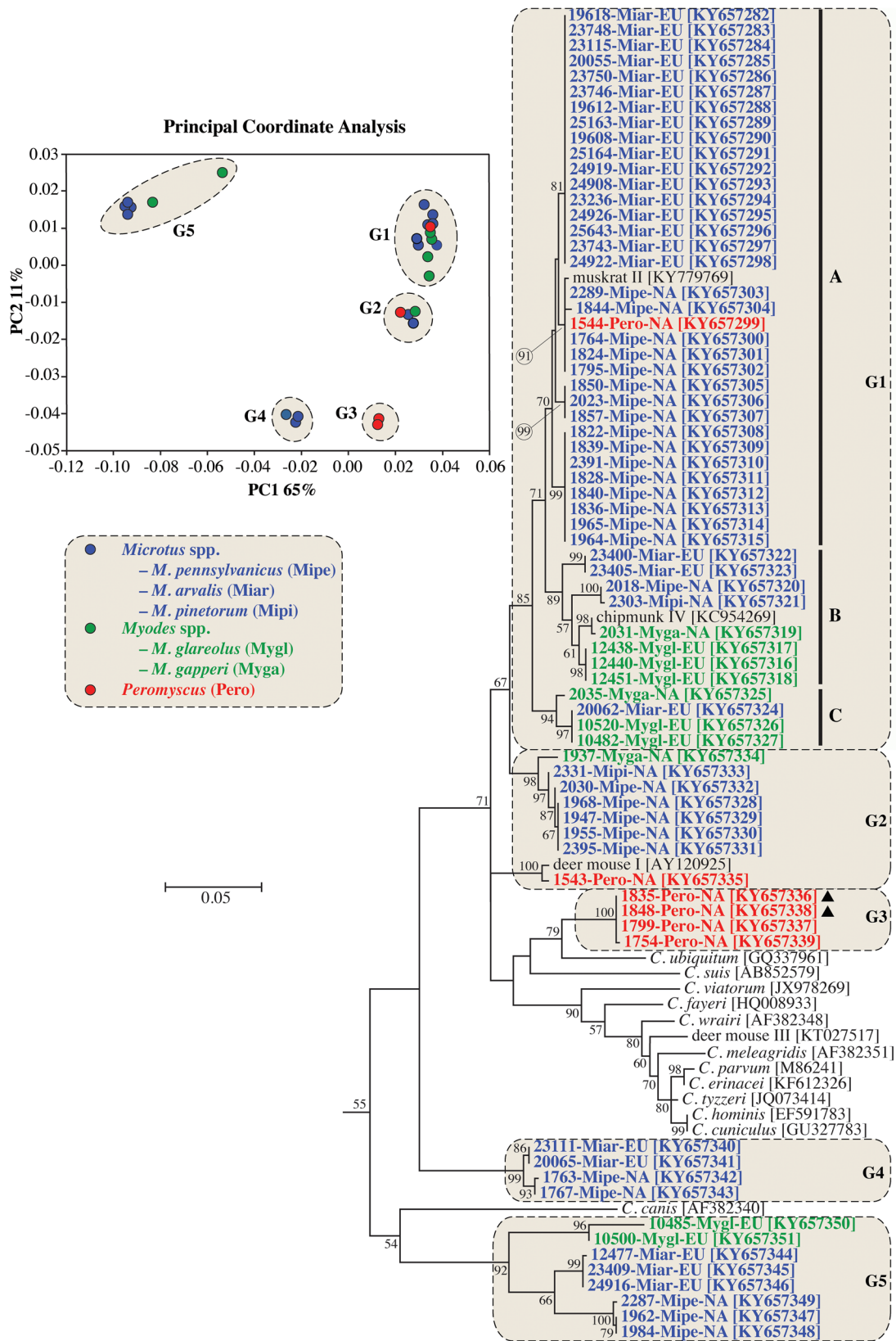


Fig. 1. Principle Coordinate Analysis (PCoA) and a maximum likelihood (ML) tree based on actin gene sequences. The five major PCoA groups (G1–G5) are highlighted against a cream background with dashed border on the ML tree. G1 is further broken down into three subgroups (A–C). Sequences from this study are identified by region (NA for NA and EU for Europe), and they are colour coded based on the genus of the host from which the sample was obtained (blue for *Microtus* spp., green for *Myodes* spp., and red for *Peromyscus* spp.). A solid black triangle (▲) identifies isolates from the same animal. The ML tree was rooted with an actin sequence from *Plasmodium falciparum* (accession number: EF472536). Due to limited space, the outgroup and some basal *Cryptosporidium* taxa are not shown. An expanded tree is shown in online Supplementary Fig. S2.

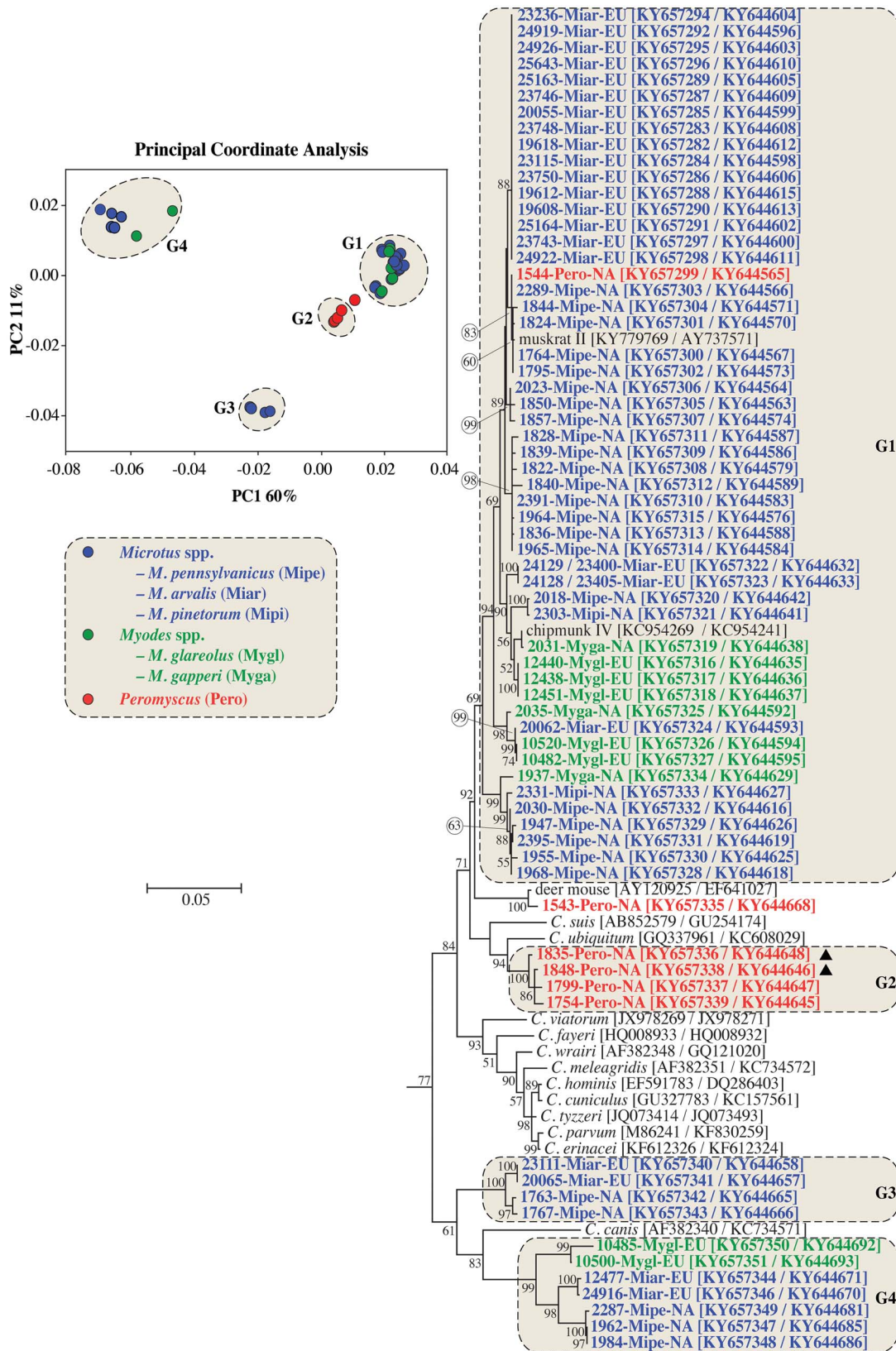


Fig. 2. Principle Coordinate Analysis (PCoA) and a maximum likelihood (ML) tree based on concatenated actin and small subunit rRNA (SSU) gene sequences. The four major PCoA groups (G1–G4) are highlighted against a cream background with dashed border on the ML tree. Sequences from this study are identified by region (NA for NA and EU for Europe), and they are colour coded based on the genus of the host from which the sample was obtained (blue for *Microtus* spp., green for *Myodes* spp. and red for *Peromyscus* spp.). A solid black triangle (▲) identifies isolates from the same animal. The ML tree was rooted with a concatenated actin/SSU sequence from *Plasmodium falciparum* (accession numbers: EF472536/JQ627149). Due to limited space, the outgroup and some basal *Cryptosporidium* taxa are not shown. An expanded tree is shown in online Supplementary Fig. S3.

*et al.* 2011; Ruecker *et al.* 2012). Therefore, despite the assigned genotype names, voles should be considered the major host for muskrat genotypes I and II. Similarly, we found that sequences clustering with the W12 and vole genotypes were exclusive to voles. The vole genotype has been identified previously in meadow voles (Feng *et al.* 2007; Ziegler *et al.* 2007), but this is the first report of a host for the W12 genotype, which was previously reported only in water (Feng *et al.* 2007; Ruecker *et al.* 2007).

The 102 variants detected among 134 SSU sequences examined suggests that cricetids host diverse *Cryptosporidium* taxa. The multiple-taxa hypothesis is predicated on the assumption that SSU sequences are orthologous, which is generally true; however, SSU sequences could also have a paralogous relationship. Some apicomplexans, including *Cryptosporidium*, can have divergent SSU paralogues that complicate the accurate reconstruction of evolutionary histories (Le Blancq *et al.* 1997; Xiao *et al.* 1999; Morgan *et al.* 2001; Kimura *et al.* 2007; Santín and Fayer, 2007; Lv *et al.* 2009; Sevá Ada *et al.* 2011; Ikarashi *et al.* 2013; Ng-Hublin *et al.* 2013; Stenger *et al.* 2015a). Ideally, paralogy should be tested in a single lineage, where it can be confirmed that the divergent SSU sequences are present in the same genome (Le Blancq *et al.* 1997). This is rarely possible in field studies on *Cryptosporidium* in complex fecal samples due to a lack of tools to propagate individual strains. Paralogy should be suspected when divergent SSU sequences co-occur in samples without the divergence of other polymorphic loci, such as actin and HSP70 (Stenger *et al.* 2015a). A limitation of this approach is the possibility that comparatively rare SSU and actin/HSP70 polymorphisms may not be detected by direct sequencing of PCR amplicons. In the present study, three isolates clustered with deer mouse genotype IV and three isolates clustered with the closely related W29 genotype at the SSU locus. All isolates clustering with deer mouse genotype IV and one of the W29 isolates were from a single animal and had identical sequences at the actin locus. Therefore, deer mouse genotype IV and W29 genotype could represent SSU paralogues rather than closely related taxa. Feng *et al.* (2007) similarly suggested that deer mouse genotypes I and II, which were detected in a single deer mouse, may be paralogues. Because paralogy is difficult to confirm in *Cryptosporidium*, when it is suspected, genes other than SSU should be used for phylogenetic reconstructions.

We found that, with few exceptions, the cricetid subfamilies Neotominae (*Peromyscus* mice) and Arvicolinae (voles and muskrats), which diverged about 19 Mya (Steppan *et al.* 2004), hosted phylogenetically distinct *Cryptosporidium* species and genotypes. Deer mouse genotypes I–IV, W29 genotype and *C. ubiquitum* were exclusively found in

*Peromyscus* mice. *Cryptosporidium ubiquitum*, which was found in a single *Peromyscus* mouse, has a broad host specificity that includes many rodent and non-rodent mammals. We previously detected *C. ubiquitum* and deer mouse genotype III in squirrels from the same area as the *Peromyscus* mice sampled in the present study (Stenger *et al.* 2015b). Feng *et al.* (2007) also found *C. ubiquitum* and deer mouse genotype III in *Peromyscus* mice and squirrels in the eastern USA, suggesting frequent transmission between these different rodent families. This could be explained by the propensity of *Peromyscus* mice and squirrels to occupy the same habitat (Brunner *et al.* 2013). In contrast, voles and *Peromyscus* mice are known to spatially segregate within grassland habitats, limiting inter-specific interactions (Bowker and Pearson, 1975).

*Cryptosporidium* genotypes infecting *Microtus* spp. and *Myodes* spp. generally clustered separately in actin and actin-SSU phylogenies, regardless of geographic location, suggesting that *Cryptosporidium* has coevolved with these cricetid genera. This is consistent with the *Myodes-Microtus* divergence time estimate of 5.76–9 Mya (Robinson *et al.* 1997; Conroy and Cook, 1999), before they colonized NA. *Myodes* likely colonized NA from Eurasia in the late Pliocene (3.6–2.58 Mya) to early Pleistocene (2.58–0.78 Mya) (Cook *et al.* 2004) and *Microtus* followed sometime later (Martin, 2003).

Although this study found that cricetids are frequently infected with *Cryptosporidium*, the species/genotypes pose little threat to human health. Only *C. ubiquitum*, which we detected in a single *Peromyscus* mouse, has been associated with human disease (Chalmers *et al.* 2011; Cieloszyk *et al.* 2012; Li *et al.* 2014).

In summary, North American and European cricetids host diverse *Cryptosporidium* spp., which in many cases appear to have coevolved with their hosts. Using only sequences of SSU to infer evolutionary relationships of *Cryptosporidium* may lead to erroneous conclusions, so it is recommended to use other polymorphic loci in phylogenetic analyses.

#### SUPPLEMENTARY MATERIAL

The supplementary material for this article can be found at <https://doi.org/10.1017/S0031182017001524>

#### FINANCIAL SUPPORT

The authors gratefully acknowledge funding support from the US Department of Agriculture National Research Initiative (Project # 2008-35102-19260), the National Institute of Allergy and Infectious Diseases (1R15AI122152-01A1), the Czech Science Foundation (15-01090S), the Grant Agency of University of South Bohemia (002/2016/Z and 098/2016/Z), and the North Dakota Water Resources Research Institute, North Dakota State University Graduate School.

## REFERENCES

- Bonhomme, F. and Searle, J. B.** (2012). House mouse phylogeography. In *Evolution of the House Mouse* (ed. Macholán, M., Baird, S. J. E., Munclinger, P. and Piálek, J.), pp. 278–296. Cambridge University Press, Cambridge.
- Bowker, L. S. and Pearson, P. G.** (1975). Habitat orientation and inter-specific interaction of *Microtus pennsylvanicus* and *Peromyscus leucopus*. *American Midland Naturalist* **94**, 491–496.
- Brunner, J. L., Duerr, S., Keesing, F., Killilea, M., Vuong, H. and Ostfeld, R. S.** (2013). An experimental test of competition among mice, chipmunks, and squirrels in deciduous forest fragments. *PLoS ONE* **8**, 9.
- Chalmers, R. M., Smith, R., Elwin, K., Clifton-Hadley, F. A. and Giles, M.** (2011). Epidemiology of anthroponotic and zoonotic human cryptosporidiosis in England and Wales, 2004–2006. *Epidemiology and Infection* **139**, 700–712.
- Checkley, W., White, A. C., Jr, Jaganath, D., Arrowood, M. J., Chalmers, R. M., Chen, X. M., Fayer, R., Griffiths, J. K., Guerrant, R. L., Hedstrom, L., Huston, C. D., Kotloff, K. L., Kang, G., Mead, J. R., Miller, M., Petri, W. A., Jr, Priest, J. W., Roos, D. S., Striepen, B., Thompson, R. C., Ward, H. D., Van Voorhis, W. A., Xiao, L., Zhu, G. and Houpt, E. R.** (2015). A review of the global burden, novel diagnostics, therapeutics, and vaccine targets for *Cryptosporidium*. *Lancet Infectious Diseases* **15**, 85–94.
- Cieloszyk, J., Goñi, P., García, A., Remacha, M. A., Sánchez, E. and Clavel, A.** (2012). Two cases of zoonotic cryptosporidiosis in Spain by the unusual species *Cryptosporidium ubiquitum* and *Cryptosporidium felis*. *Enfermedades Infecciosas y Microbiología Clínica* **30**, 549–551.
- Clarke, K. R.** (1993). Nonparametric multivariate analyses of changes in community structure. *Australian Journal of Ecology* **18**, 117–143.
- Conroy, C. J. and Cook, J. A.** (1999). MtDNA evidence for repeated pulses of speciation within arvicoline and murid rodents. *Journal of Mammalian Evolution* **6**, 221–245.
- Cook, J. A., Runck, A. M. and Conroy, C. J.** (2004). Historical biogeography at the crossroads of the northern continents: molecular phylogenetics of red-backed voles (Rodentia: Arvicolinae). *Molecular Phylogenetics and Evolution* **30**, 767–777.
- Fayer, R.** (2010). Taxonomy and species delimitation in *Cryptosporidium*. *Experimental Parasitology* **124**, 90–97.
- Feltus, D. C., Giddings, C. W., Schneck, B. L., Monson, T., Warshauer, D. and McEvoy, J. M.** (2006). Evidence supporting zoonotic transmission of *Cryptosporidium* spp. in Wisconsin. *Journal of Clinical Microbiology* **44**, 4303–4308.
- Feng, Y., Alderisio, K. A., Yang, W., Blancero, L. A., Kuhne, W. G., Ndareski, C. A., Reid, M. and Xiao, L.** (2007). *Cryptosporidium* genotypes in wildlife from a New York watershed. *Applied and Environmental Microbiology* **73**, 6475–6483.
- Hasegawa, M., Kishino, H. and Yano, T. A.** (1985). Dating of the human ape splitting by a molecular clock of mitochondrial-DNA. *Journal of Molecular Evolution* **22**, 160–174.
- Holubová, N., Sak, B., Horčíčková, M., Hlášková, L., Květoňová, D., Menchaca, S., McEvoy, J. and Kváč, M.** (2016). *Cryptosporidium avium* n. sp. (Apicomplexa: Cryptosporidiidae) in birds. *Parasitology Research* **115**, 2243–2251.
- Ikarashi, M., Fukuda, Y., Honma, H., Kasai, K., Kaneta, Y. and Nakai, Y.** (2013). First description of heterogeneity in 18S rRNA genes in the haploid genome of *Cryptosporidium andersoni* Kawatabi type. *Veterinary Parasitology* **196**, 220–224.
- Ježková, J., Horčíčková, M., Hlášková, L., Sak, B., Květoňová, D., Novák, J., Hofmannová, L., McEvoy, J. and Kváč, M.** (2016). *Cryptosporidium testudinis* sp. n., *Cryptosporidium ducismarci* Traversa, 2010 and *Cryptosporidium tortoise* genotype III (Apicomplexa: Cryptosporidiidae) in tortoises. *Folia Parasitologica* **63**, 035. doi: 10.14411/fp.2016.035.
- Katoh, K. and Standley, D. M.** (2013). MAFFT multiple sequence alignment software version 7: improvements in performance and usability. *Molecular Biology and Evolution* **30**, 772–780.
- Kimura, A., Edagawa, A., Okada, K., Takimoto, A., Yonesho, S. and Karanis, P.** (2007). Detection and genotyping of *Cryptosporidium* from brown rats (*Rattus norvegicus*) captured in an urban area of Japan. *Parasitology Research* **100**, 1417–1420.
- Kváč, M., McEvoy, J., Loudová, M., Stenger, B., Sak, B., Květoňová, D., Ditrich, O., Rašková, V., Moriarty, E., Rost, M., Macholán, M. and Piálek, J.** (2013). Coevolution of *Cryptosporidium tyzzeri* and the house mouse (*Mus musculus*). *International Journal for Parasitology* **43**, 805–817.
- Kváč, M., McEvoy, J., Stenger, B. and Clark, M.** (2014). Cryptosporidiosis in other vertebrates. In *Cryptosporidium: Parasite and Disease* (ed. Cacciò, S. M. and Widmer, G.), pp. 237–323. Springer Vienna, Vienna, Austria.
- Kváč, M., Havrdová, N., Hlášková, L., Daňková, T., Kanděra, J., Ježková, J., Vitovec, J., Sak, B., Ortega, Y., Xiao, L., Modrý, D., Chelladurai, J. R., Prantlová, V. and McEvoy, J.** (2016). *Cryptosporidium proliferans* n. sp. (Apicomplexa: Cryptosporidiidae): molecular and biological evidence of cryptic species within gastric *Cryptosporidium* of mammals. *PLoS ONE* **11**, e0147090.
- Le Blancq, S. M., Khramtsov, N. V., Zamani, F., Upton, S. J. and Wu, T. W.** (1997). Ribosomal RNA gene organization in *Cryptosporidium parvum*. *Molecular and Biochemical Parasitology* **90**, 463–478.
- Li, N., Xiao, L., Alderisio, K., Elwin, K., Cebelinski, E., Chalmers, R., Santín, M., Fayer, R., Kváč, M., Ryan, U., Sak, B., Stanko, M., Guo, Y., Wang, L., Zhang, L., Cai, J., Roellig, D. and Feng, Y.** (2014). Subtyping *Cryptosporidium ubiquitum*, a zoonotic pathogen emerging in humans. *Emerging Infectious Diseases* **20**, 217–224.
- Lv, C., Zhang, L., Wang, R., Jian, F., Zhang, S., Ning, C., Wang, H., Feng, C., Wang, X., Ren, X., Qi, M. and Xiao, L.** (2009). *Cryptosporidium* spp. in wild, laboratory, and pet rodents in China: prevalence and molecular characterization. *Applied and Environmental Microbiology* **75**, 7692–7699.
- Martin, R. A.** (2003). Biochronology of latest Miocene through Pleistocene arvicolid rodents from the Central Great Plains of North America. *Coloquios de Paleontología* **1**, 373–383.
- McLauchlin, J., Casemore, D. P., Moran, S. and Patel, S.** (1998). The epidemiology of cryptosporidiosis: application of experimental sub-typing and antibody detection systems to the investigation of water-borne outbreaks. *Folia Parasitologica* **45**, 83–92.
- Morgan, U. M., Monis, P. T., Xiao, L., Limor, J., Sulaiman, I., Raidal, S., O'Donoghue, P., Gasser, R., Murray, A., Fayer, R., Blagburn, B. L., Lal, A. A. and Thompson, R. C.** (2001). Molecular and phylogenetic characterisation of *Cryptosporidium* from birds. *International Journal for Parasitology* **31**, 289–296.
- Ng-Hublin, J. S., Singleton, G. R. and Ryan, U.** (2013). Molecular characterization of *Cryptosporidium* spp. from wild rats and mice from rural communities in the Philippines. *Infection, Genetics and Evolution* **16**, 5–12.
- Nichols, G. L., McLauchlin, J. and Samuel, D.** (1991). A technique for typing *Cryptosporidium* isolates. *Journal of Protozoology* **38**, 237S–240S.
- Nina, J. M., McDonald, V., Deer, R. M., Wright, S. E., Dyson, D. A., Chiodini, P. L. and McAdam, K. P.** (1992). Comparative study of the antigenic composition of oocyst isolates of *Cryptosporidium parvum* from different hosts. *Parasite Immunology* **14**, 227–232.
- Ogunkolade, B. W., Robinson, H. A., McDonald, V., Webster, K. and Evans, D. A.** (1993). Isoenzyme variation within the genus *Cryptosporidium*. *Parasitology Research* **79**, 385–388.
- Papirini, A., Jackson, B., Ward, S., Young, S. and Ryan, U. M.** (2012). Multiple *Cryptosporidium* genotypes detected in wild black rats (*Rattus rattus*) from northern Australia. *Experimental Parasitology* **131**, 404–412.
- Peakall, R. and Smouse, P. E.** (2012). Genalex 6.5: genetic analysis in Excel. Population genetic software for teaching and research – an update. *Bioinformatics* **28**, 2537–2539.
- Peng, M. M., Wilson, M. L., Holland, R. E., Meshnick, S. R., Lal, A. A. and Xiao, L.** (2003). Genetic diversity of *Cryptosporidium* spp. in cattle in Michigan: implications for understanding the transmission dynamics. *Parasitology Research* **90**, 175–180.
- Perz, J. F. and Le Blancq, S. M.** (2001). *Cryptosporidium parvum* infection involving novel genotypes in wildlife from lower New York State. *Applied and Environmental Microbiology* **67**, 1154–1162.
- R Core Team** (2013). *R: A Language and Environment for Statistical Computing*. R Foundation for Statistical Computing, Vienna, Austria.
- Robinson, G., Chalmers, R. M., Stapleton, C., Palmer, S. R., Watkins, J., Francis, C. and Kay, D.** (2011). A whole water catchment approach to investigating the origin and distribution of *Cryptosporidium* species. *Journal of Applied Microbiology* **111**, 717–730.
- Robinson, M., Catzeflis, F., Briolay, J. and Mouchiroud, D.** (1997). Molecular phylogeny of rodents, with special emphasis on murids: evidence from nuclear gene LCAT. *Molecular Phylogenetics and Evolution* **8**, 423–434.
- Ruecker, N. J., Braithwaite, S. L., Topp, E., Edge, T., Lapen, D. R., Wilkes, G., Robertson, W., Medeiros, D., Sensen, C. W. and Neumann, N. F.** (2007). Tracking host sources of *Cryptosporidium* spp. in raw water for improved health risk assessment. *Applied and Environmental Microbiology* **73**, 3945–3957.
- Ruecker, N. J., Matsune, J. C., Wilkes, G., Lapen, D. R., Topp, E., Edge, T. A., Sensen, C. W., Xiao, L. and Neumann, N. F.** (2012). Molecular and phylogenetic approaches for assessing sources of *Cryptosporidium* contamination in water. *Water Research* **46**, 5135–5150.



- Ryan, U. (2010). *Cryptosporidium* in birds, fish and amphibians. *Experimental Parasitology* **124**, 113–120.
- Ryan, U., Fayer, R. and Xiao, L. (2014). *Cryptosporidium* species in humans and animals: current understanding and research needs. *Parasitology* **141**, 1667–1685.
- Saitou, N. and Nei, M. (1987). The neighbor-joining method: a new method for reconstructing phylogenetic trees. *Molecular Biology and Evolution* **4**, 406–425.
- Santín, M. and Fayer, R. (2007). Intra-genotypic variations in the *Cryptosporidium* sp. cervine genotype from sheep with implications for public health. *Journal of Parasitology* **93**, 668–672.
- Schloss, P. D., Westcott, S. L., Ryabin, T., Hall, J. R., Hartmann, M., Hollister, E. B., Lesniewski, R. A., Oakley, B. B., Parks, D. H., Robinson, C. J., Sahl, J. W., Stres, B., Thallinger, G. G., Van Horn, D. J. and Weber, C. F. (2009). Introducing mothur: open-source, platform-independent, community-supported software for describing and comparing microbial communities. *Applied and Environmental Microbiology* **75**, 7537–7541.
- Sevá Ada, P., Funada, M. R., Richtzenhain, L., Guimarães, M. B., Souza, S. e. O., Allegratti, L., Sinhorini, J. A., Duarte, V. V. and Soares, R. M. (2011). Genotyping of *Cryptosporidium* spp. from free-living wild birds from Brazil. *Veterinary Parasitology* **175**, 27–32.
- Stenger, B. L., Clark, M. E., Kváč, M., Khan, E., Giddings, C. W., Dyer, N. W., Schultz, J. L. and McEvoy, J. M. (2015a). Highly divergent 18S rRNA gene paralogs in a *Cryptosporidium* genotype from eastern chipmunks (*Tamias striatus*). *Infection, Genetics and Evolution* **32**, 113–123.
- Stenger, B. L., Clark, M. E., Kváč, M., Khan, E., Giddings, C. W., Prediger, J. and McEvoy, J. M. (2015b). North American tree squirrels and ground squirrels with overlapping ranges host different *Cryptosporidium* species and genotypes. *Infection, Genetics and Evolution* **36**, 287–293.
- Steppan, S., Adkins, R. and Anderson, J. (2004). Phylogeny and divergence-date estimates of rapid radiations in murid rodents based on multiple nuclear genes. *Systematic Biology* **53**, 533–553.
- Sulaiman, I. M., Lal, A. A. and Xiao, L. (2002). Molecular phylogeny and evolutionary relationships of *Cryptosporidium* parasites at the actin locus. *Journal of Parasitology* **88**, 388–394.
- Tamura, K., Stecher, G., Peterson, D., Filipiński, A. and Kumar, S. (2013). MEGA6: molecular evolutionary genetics analysis version 6.0. *Molecular Biology and Evolution* **30**, 2725–2729.
- Tavaré, S. (1986). Some probabilistic and statistical problems in the analysis of DNA sequences. In *Some Mathematical Questions in Biology: DNA Sequence Analysis (Lectures on Mathematics in the Life Sciences)* (ed. Miura, R. M.), pp. 57–86. American Mathematical Society, New York.
- Thompson, J. D., Higgins, D. G. and Gibson, T. J. (1994). CLUSTAL w: improving the sensitivity of progressive multiple sequence alignment through sequence weighting, position-specific gap penalties and weight matrix choice. *Nucleic Acids Research* **22**, 4673–4680.
- Wilson, D. E. and Reeder, D. M. (2005). *Mammal Species of the World. A Taxonomic and Geographic Reference*. p. 2142. Johns Hopkins University Press, Baltimore, Maryland.
- Xiao, L., Limor, J. R., Li, L., Morgan, U., Thompson, R. C. and Lal, A. A. (1999). Presence of heterogeneous copies of the small subunit rRNA gene in *Cryptosporidium parvum* human and marsupial genotypes and *Cryptosporidium felis*. *Journal of Eukaryotic Microbiology* **46**, 44S–45S.
- Xiao, L., Singh, A., Limor, J., Graczyk, T. K., Gradus, S. and Lal, A. (2001). Molecular characterization of *Cryptosporidium* oocysts in samples of raw surface water and wastewater. *Applied and Environmental Microbiology* **67**, 1097–1101.
- Xiao, L., Sulaiman, I. M., Ryan, U. M., Zhou, L., Atwill, E. R., Tischler, M. L., Zhang, X., Fayer, R. and Lal, A. A. (2002). Host adaptation and host-parasite co-evolution in *Cryptosporidium*: implications for taxonomy and public health. *International Journal for Parasitology* **32**, 1773–1785.
- Zhao, Z., Wang, R., Zhao, W., Qi, M., Zhao, J., Zhang, L., Li, J. and Liu, A. (2015). Genotyping and subtyping of *Giardia* and *Cryptosporidium* isolates from commensal rodents in China. *Parasitology* **142**, 800–806.
- Zhou, L., Fayer, R., Trout, J. M., Ryan, U. M., Schaefer, F. W., III and Xiao, L. (2004). Genotypes of *Cryptosporidium* species infecting fur-bearing mammals differ from those of species infecting humans. *Applied and Environmental Microbiology* **70**, 7574–7577.
- Ziegler, P. E., Wade, S. E., Schaaf, S. L., Chang, Y. F. and Mohammed, H. O. (2007). *Cryptosporidium* spp. from small mammals in the New York City watershed. *Journal of Wildlife Diseases* **43**, 586–596.