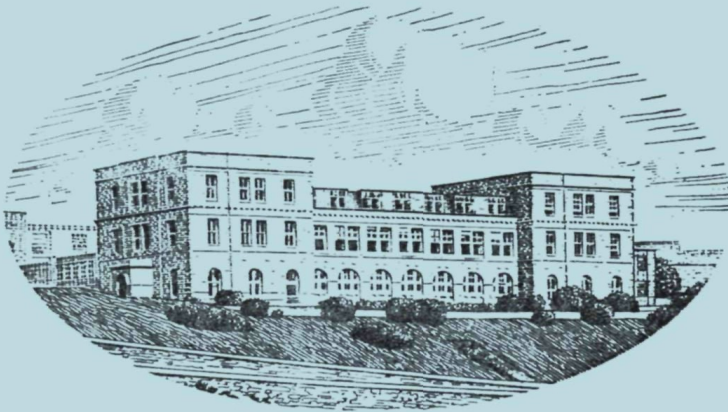


Member's Privilege Copy for personal use only

JOURNAL OF THE
MARINE BIOLOGICAL ASSOCIATION
OF THE UNITED KINGDOM



THE PLYMOUTH LABORATORY

VOLUME 57, No. 4

(issued November 1977)

JMBAAK 57 (No. 4) 889-1199 (1977) 0025-3154

CAMBRIDGE UNIVERSITY PRESS

1977

THE MARINE BIOLOGICAL ASSOCIATION OF THE UNITED KINGDOM

PATRON

H.R.H. THE PRINCE PHILIP DUKE OF EDINBURGH, F.R.S.

OFFICERS AND COUNCIL

President: Prof. J. Z. YOUNG, D.Sc., F.R.S.

Vice-Presidents

Sir EDWARD J. SALISBURY, Kt., C.B.E., D.Sc.,
LL.D., F.R.S.

Prof. Sir ALISTER C. HARDY, Kt., D.Sc., F.R.S.

Sir C. MAURICE YONGE, Kt., C.B.E., D.Sc., F.R.S.

Rear Admiral Sir EDMUND G. IRVING, K.B.E., C.B.

Sir FREDERICK S. RUSSELL, Kt., C.B.E., D.S.C.,
D.F.C., D.Sc., LL.D., F.R.S.

Sir EDWARD R. CHADWYCK-HEALEY, Bt., M.C.

Sir J. ERIC SMITH, Kt., C.B.E., Sc.D., F.R.S.

Sir ALAN L. HODGKIN, O.M., K.B.E., Sc.D., F.R.S.

Honorary Members

Sir GEORGE E. R. DEACON, Kt., C.B.E., D.Sc.,
F.R.S.

Prof. Sir ALISTER C. HARDY, Kt., D.Sc., F.R.S.

Dr A. C. REDFIELD

Sir C. MAURICE YONGE, Kt., C.B.E., D.Sc., F.R.S.

COUNCIL

Elected Members

Prof. P. F. BAKER, Ph.D., F.R.S.

J. H. S. BLAXTER, D.Sc.

Prof. K. F. BOWDEN, D.Sc.

Prof. H. CHARNOCK, F.R.S.

Prof. R. B. CLARK, D.Sc.

D. H. CUSHING, D.Phil., F.R.S.

Prof. J. M. DODD, D.Sc., F.R.S.

Sir ALAN L. HODGKIN, O.M., K.B.E., Sc.D., F.R.S.

R. H. HEDLEY, D.Sc.

Prof. G. J. HILLS, D.Sc.

Prof. F. G. T. HOLLIDAY, C.B.E.

Prof. O. E. LOWENSTEIN, D.Sc., F.R.S.

Prof. E. NAYLOR, Ph.D.

Prof. W. D. P. STEWART, D.Sc., F.R.S.

Prof. Sir FREDERICK E. WARNER, Kt., D.Sc., F.R.S.

Governors

J. G. KELSEY (Ministry of Agriculture, Fisheries
and Food)

The Worshipful Company of Fishmongers:

Sir EDWARD R. CHADWYCK-HEALEY, Bt., M.C.

Col. Sir JOHN G. CAREW POLE, Bt., D.S.O., T.D.

The Hon. HUGH WALDORF ASTOR, J.P.

Prof. J. W. S. PRINGLE, M.B.E., Sc.D., F.R.S.
(Oxford University)

M. J. WELLS, Sc.D. (Cambridge University)

Prof. G. P. WELLS, Sc.D., F.R.S. (Zoological Society)

Prof. SIR BERNARD KATZ, Kt., M.D., D.Sc., F.R.S.
(Royal Society)

Prof. G. E. FOGG, Sc.D., F.R.S.
(British Association)

Prof. R. D. KEYNES, Sc.D., F.R.S.
(Physiological Society)

Hon. Treasurer: The Hon. HUGH WALDORF ASTOR, J.P., 14 Culross Street, London, W1Y 3HN

Secretary: E. J. DENTON, C.B.E., Sc.D., F.R.S., The Laboratory, Citadel Hill, Plymouth, PL1 2PB

SCIENTIFIC STAFF

Director: E. J. DENTON, C.B.E., Sc.D., F.R.S.

P. G. CORBIN, B.A. (*Zoologist*)

N. A. HOLME, Sc.D., M.A. (*Zoologist*)

G. R. FORSTER, B.Sc. (*Zoologist*)

E. D. S. CORNER, M.Sc., Ph.D. (*Biochemist*)

A. J. SOUTHWARD, D.Sc., Ph.D. (*Zoologist*)

E. I. BUTLER, C.Chem., F.R.I.C. (*Chemist*)

J. V. HOWARTH, B.Sc., Ph.D. (*Physiologist*)

Q. BONE, M.A., D.Phil. (*Zoologist*)

G. T. BOALCH, B.Sc., Ph.D. (*Physiologist*)

G. W. BRYAN, B.Sc., Ph.D. (*Zoologist*)

A. G. DAVIES, B.Sc., Ph.D. (*Physical Chemist*)

P. R. DANDO, B.Sc., Ph.D. (*Biochemist*)

P. E. GIBBS, B.Sc., M.A., Ph.D. (*Zoologist*)

B. L. ROBERTS, M.A., Ph.D. (*Physiologist*)

J. C. GREEN, B.Sc., Ph.D. (*Physiologist*)

D. K. GRIFFITHS, M.Sc. (*Physical Oceanographer*)

G. W. POTTS, B.Sc., Ph.D. (*Zoologist*)

J. B. GILPIN-BROWN, B.Sc., Ph.D. (*Bursar and
Zoologist*)

H. MEVES, M.D. (*Physiologist*)

M. WHITFIELD, B.Sc., Ph.D. (*Physical Chemist*)

M. R. CLARKE, B.Sc., Ph.D. (*Zoologist*)

R. P. HARRIS, B.Sc., Ph.D. (*Zoologist*)

P. M. HOLLIGAN, M.A., Ph.D. (*Biochemist*)

J. H. WICKSTEAD, D.Sc., Ph.D., F.I.Biol., Ministry of Overseas Development (*Zoologist*)

R. D. PINGREE, B.Sc., Dip.Ed., Ph.D., Institute of Oceanographic Sciences (*Oceanographer*)

D. R. TURNER, Post-doctoral Research Fellow (*Chemist*)

November 1977

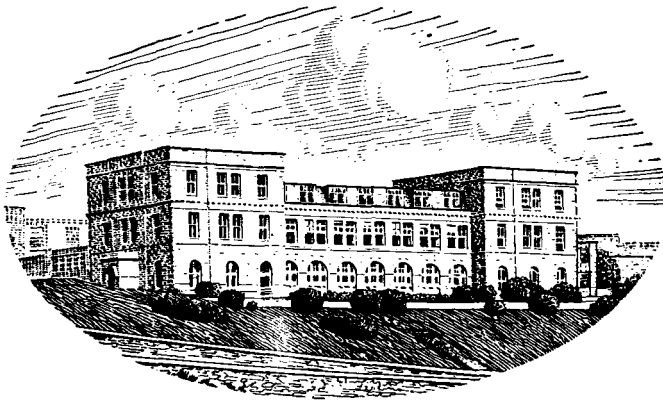
**JOURNAL OF THE
MARINE BIOLOGICAL ASSOCIATION
OF THE UNITED KINGDOM**

PUBLISHED BY
THE SYNDICS OF THE CAMBRIDGE UNIVERSITY PRESS
The Pitt Building, Trumpington Street, Cambridge CB2 1RP
Bentley House, 200 Euston Road, London, N.W.1
32 East 57th Street, New York, N.Y. 10022

© Copyright Marine Biological Association of the U.K.

Printed in Great Britain at the University Printing House, Cambridge

**JOURNAL OF THE
MARINE BIOLOGICAL ASSOCIATION
OF THE UNITED KINGDOM**



THE PLYMOUTH LABORATORY

VOLUME 57

1977

This volume is dedicated to The Queen
on the occasion of Her Majesty's Silver Jubilee

CAMBRIDGE UNIVERSITY PRESS
CAMBRIDGE · LONDON · NEW YORK

The Council of the Marine Biological Association wish it to be understood that they do not accept responsibility for the accuracy of statements published in this Journal, excepting when those statements are contained in an official report of the Council.

CONTENTS OF VOLUME 57

Number 1, pp. 1-284, 31 March 1977

Number 2, pp. 285-575, 31 May 1977

Number 3, pp. 577-887, 31 August 1977

Number 4, pp. 889-1199, 15 November 1977

	PAGE
Report of the Council for 1976-77	1151
Income and Expenditure Account and Balance Sheet	1195
ADENEY, R. J. and HUGHES, G. M.	
Some observations on the gills of the oceanic sunfish, <i>Mola mola</i>	825
AL-ADHUB, A. H. Y. and BOWERS, A. B.	
Growth and breeding of <i>Dichelopandalus bonnieri</i> in Isle of Man waters	229
ANGEL, M. V.	
Studies on Atlantic halocyprid ostracods: vertical distributions of the species in the top 1000 m in the vicinity of 44° N, 13° W	239
ARMITAGE, M. E., <i>see</i> MORRIS <i>et al.</i>	
BARRETT, R. L.	
<i>See</i> HOLME and BARRETT	391
<i>See</i> WILSON, HOLME and BARRETT	405
BAYNE, B. L. and SCULLARD, C.	
Rates of nitrogen excretion by species of <i>Mytilus</i> (Bivalvia: Mollusca)	355
An apparent specific dynamic action in <i>Mytilus edulis</i> L.	371
BENOVIĆ, A., <i>see</i> SCHMIDT and BENOVIĆ	
BIGGLEY, W. H., <i>see</i> SWIFT, BIGGLEY and NAPORA	
BIRCH, M. C., <i>see</i> CHENG and BIRCH	
BIRD, N. L., <i>see</i> McLACHLAN, VAN DER MEER and BIRD	
BLAKE, R. W.	
On ostraciiform locomotion	1047
BLAXTER, J. H. S.	
The effect of copper on the eggs and larvae of plaice and herring	849
<i>See also</i> TYTLER and BLAXTER	1057
BOALCH, G. T. and POTTS, G. W.	
The first occurrence of <i>Sargassum muticum</i> (Yendo) Fensholt in the Plymouth area	29
BONE, Q.	
Mauthner neurons in elasmobranchs	253
BOWERS, A. B., <i>see</i> AL-ADHUB and BOWERS	
BOWMAN, R. S. and LEWIS, J. R.	
Annual fluctuations in the recruitment of <i>Patella vulgata</i> L.	793
BOXSHALL, G. A.	
The depth distributions and community organization of the planktonic cyclopoids (Crustacea: Copepoda) of the Cape Verde Islands	543

	PAGE
BOYDEN, C. R.	
Effect of size upon metal content of shellfish	675
BRYAN, G. W. and HUMMERSTONE, L. G.	
Indicators of heavy-metal contamination in the Looe Estuary (Cornwall) with particular regard to silver and lead	75
BRYAN, G. W., POTTS, G. W. and FORSTER, G. R.	
Heavy metals in the gastropod mollusc <i>Haliotis tuberculata</i> (L.).	379
BUTLER, E. I., <i>see</i> PINGREE, MADDOCK and BUTLER	1065
CHENG, L. and BIRCH, M. C.	
Terrestrial insects at sea	995
CLARIDGE, P. N. and GARDNER, D. C.	
The biology of the northern rockling, <i>Ciliata septentrionalis</i> , in the Severn Estuary and Bristol Channel	839
CORNELIUS, P. F. S.	
On the nomenclature of the hydroid, <i>Candelabrum phrygium</i> (Fabricius, 1780) (= <i>Myriothele phrygia</i> , <i>Arum cocksi</i>)	521
CORNER, E. D. S., <i>see</i> SARGENT <i>et al.</i>	525
COX, E. J.	
The distribution of tube-dwelling diatom species in the Severn Estuary	19
DALY, J. M. and GOLDING, D. W.	
A description of the spermatheca of <i>Spirorbis spirorbis</i> (L.) (Polychaeta: Serpulidae) and evidence for a novel mode of sperm transmission	219
DAVENPORT, J.	
A study of the effects of copper applied continuously and discontinuously to specimens of <i>Mytilus edulis</i> (L.) exposed to steady and fluctuating salinity levels	63
<i>See also</i> SHUMWAY and DAVENPORT	907
DE BURGH, M. E., WEST, A. B. and JEAL, F.	
Absorption of L-alanine and other dissolved nutrients by the spines of <i>Paracentrotus lividus</i> (Echinoidea)	1031
DIGBY, P. S. B.	
Growth and calcification in the coralline algae, <i>Clathromorphum circumscriptum</i> and <i>Corallina officinalis</i> , and the significance of pH in relation to precipitation	1095
Photosynthesis and respiration in the coralline algae, <i>Clathromorphum circumscriptum</i> and <i>Corallina officinalis</i> , and the metabolic basis of calcification	1111
DOYLE, M. J.	
A morphological staging system for the larval development of the herring, <i>Clupea harengus</i> L.	859
EDELSTEIN, T., <i>see</i> MCLACHLAN and EDELSTEIN	577
EMSON, R. H.	
The feeding and consequent role of <i>Eulalia viridis</i> (O. F. Müller) (Polychaeta) in intertidal communities	93
FERGUSON, C. F., <i>see</i> MORRIS <i>et al.</i>	181
FISH, J. D. and FISH, S.	
The effects of temperature and salinity on the embryonic development of <i>Hydrobia ulvae</i> (Pennant)	213
FISH, S., <i>see</i> FISH and FISH	213

CONTENTS OF VOLUME 57

vii

	PAGE
FORSTER, G. R., <i>see</i> BRYAN, POTTS and FORSTER	379
FREEMAN, R. F. H. and SHUTTLEWORTH, T. J.	
Distribution of dry matter between the tissues and coelom in <i>Arenicola marina</i> (L.) equilibrated to diluted sea water	97
Distribution of water in <i>Arenicola marina</i> equilibrated to diluted sea water	501
Distribution of intracellular solutes in <i>Arenicola marina</i> (Polychaeta) equilibrated to diluted sea water	889
FRETTER, V. and MANLY, R.	
Algal associations of <i>Tricolia pullus</i> , <i>Lacuna vineta</i> and <i>Cerithiopsis tubercularis</i> (Gastropoda) with special reference to the settlement of their larvae	999
GARDNER, D. C., <i>see</i> CLARIDGE and GARDNER	839
GATTEN, R. R., <i>see</i> SARGENT <i>et al.</i>	525
GIBBS, P. E.	
On the status of <i>Golfingia intermedia</i> (Sipuncula)	109
GOLDING, D. W., <i>see</i> DALY and GOLDING	219
GREEN, J. C. and HIBBERD, D. J.	
The ultrastructure and taxonomy of <i>Diacronema vlkianum</i> (Prymnesiophyceae) with special reference to the haptonema and flagellar apparatus	1125
GREEN, J. C. and PIENAAR, R. N.	
The taxonomy of the order Isochrysidales (Prymnesiophyceae) with special reference to the genera <i>Isochrysis</i> Parke, <i>Dicrateria</i> Parke and <i>Imantonia</i> Reynolds	7
HARBOUR, D. S., <i>see</i> HOLLIGAN and HARBOUR	1075
HARTWIG, E. and PARKER, J. G.	
On the systematics and ecology of interstitial ciliates of sandy beaches in North Yorkshire	735
HELM, M. M.	
Mixed algal feeding of <i>Ostrea edulis</i> larvae with <i>Isochrysis galbana</i> and <i>Tetraselmis suecica</i>	1019
HEPPER, B. T.	
The fishery for crawfish, <i>Palinurus elephas</i> , off the coast of Cornwall	925
HIBBERD, D. J.	
Observations on the ultrastructure of the cryptomonad endosymbiont of the red-water ciliate <i>Mesodinium rubrum</i>	45
<i>See also</i> GREEN and HIBBERD	1125
HOLLIGAN, P. M. and HARBOUR, D. S.	
The vertical distribution and succession of phytoplankton in the western English Channel in 1975 and 1976	1075
HOLME, N. A. and BARRETT, R. L.	
A sledge with television and photographic cameras for quantitative investigation of the epifauna on the Continental Shelf	391
<i>See also</i> WILSON, HOLME and BARRETT	405
HOPKINS, C. C. E.	
The relationship between maternal body size and clutch size, development time and egg mortality in <i>Euchaeta norvegica</i> (Copepoda: Calanoida) from Loch Etive, Scotland	723
HOPKINS, C. C. E. and MACHIN, D.	
Patterns of spermatophore distribution and placement in <i>Euchaeta norvegica</i> (Copepoda: Calanoida)	113

	PAGE
HUGHES, G. M., <i>see</i> ADENEY and HUGHES	825
HUGHES, R. G.	
Aspects of the biology and life-history of <i>Nemertesia antennina</i> (L.) (Hydrozoa: Plumulariidae)	641
HUMMERSTONE, L. G., <i>see</i> BRYAN and HUMMERSTONE	75
JEAL, F., <i>see</i> DE BURGH, WEST and JEAL	1031
KAIN, J. M. (Mrs N. S. Jones)	
The biology of <i>Laminaria hyperborea</i> . X. The effect of depth on some populations	587
KILVINGTON, C. C., <i>see</i> SARGENT <i>et al.</i>	525
KNIGHT-JONES, E. W., <i>see</i> KNIGHT-JONES and KNIGHT-JONES	453
KNIGHT-JONES, P. and KNIGHT-JONES, E. W.	
Taxonomy and ecology of British Spirorbidae (Polychaeta)	453
KOFOED, L. H., <i>see</i> NEWELL and KOFOED	161
KRESS, A.	
<i>Runcina ferruginea</i> n.sp. (Cephalaspidea: Opisthobranchia: Gastropoda), a new runcinid from Great Britain.	201
KRYVI, H. and TOTLAND, G. K.	
Histochemical studies with microphotometric determinations of the lateral muscles in the sharks <i>Etmopterus spinax</i> and <i>Galeus melastomus</i>	261
LEADBEATER, B. S. C.	
Observations on the life-history and ultrastructure of the marine choanoflagellate <i>Choanoeca perplexa</i> Ellis	285
<i>See also</i> PARKE and LEADBEATER	1
LEE, R. E.	
Saprophytic and phagocytic isolates of the colourless heterotrophic dinoflagellate <i>Gyrodinium lebouriae</i> Herdman.	303
LEWIS, J. R., <i>see</i> BOWMAN and LEWIS	793
MACHIN, D., <i>see</i> HOPKINS and MACHIN	113
MCLACHLAN, J. and EDELSTEIN, T.	
Life-history and culture of <i>Gracilaria foliifera</i> (Rhodophyta) from South Devon	577
MCLACHLAN, J., VAN DER MEER, J. P. and BIRD, N. L.	
Chromosome numbers of <i>Gracilaria foliifera</i> and <i>Gracilaria</i> sp. (Rhodophyta) and attempted hybridizations	1137
MADDOCK, L. and SWANN, C. L.	
A statistician analysis of some trends in sea temperature and climate in the Plymouth area in the last 70 years	317
<i>See also</i> PINGREE and MADDOCK	339
<i>See also</i> PINGREE and MADDOCK	869
<i>See also</i> PINGREE, MADDOCK and BUTLER	1065
MANLY, R., <i>see</i> FRETTER and MANLY	999
MAUCLINE, J.	
The integumental sensilla and glands of pelagic Crustacea.	973
MOORE, P. G.	
Additions to the littoral fauna of Rockall, with a description of <i>Araeolaimus penelope</i> sp.nov. (Nematoda: Axonolaimidae)	191

CONTENTS OF VOLUME 57

ix

PAGE

MORRIS, R. J., ARMITAGE, M. E., RAYMONT, J. E. G., FERGUSON, C. F. and RAYMONT, J. K. B.	
Effects of a starch diet on the lipid chemistry of <i>Neomysis integer</i> (Leach)	181
NAPORA, T. A., <i>see</i> SWIFT, BIGGLEY and NAPORA	817
NAYLOR, E., <i>see</i> TAYLOR and NAYLOR	273
NEWELL, R. C. and KOFOED, L. H.	
The energetics of suspension-feeding on the gastropod <i>Crepidula fornicata</i> L.	161
NORTON, T. A.	
Ecological experiments with <i>Sargassum muticum</i>	33
OLIVE, P. J. W.	
The life-history and population structure of the polychaetes <i>Nephtys caeca</i> and <i>Nephtys hombergii</i> with special reference to the growth rings in the teeth	133
OSWALD, R. L.	
Immobilization of decapod Crustacea for experimental procedures	715
PARKE, M. and LEADBEATER, B. S. C.	
Check-list of British marine Choanoflagellida – second revision	1
PARKER, J. G., <i>see</i> HARTWIG and PARKER	735
PIENAAR, R. N., <i>see</i> GREEN and PIENAAR	7
PINGREE, R. D. and MADDOCK, L.	
Tidal residuals in the English Channel	339
Tidal eddies and coastal discharge	869
PINGREE, R. D., MADDOCK, L. and BUTLER, E. I.	
The influence of biological activity and physical stability in determining the chemical distributions of inorganic phosphate, silicate and nitrate	1065
POTTS, G. W.	
<i>See</i> BOALCH and POTTS	29
<i>See</i> BRYAN, POTTS and FORSTER.	379
PYBUS, C.	
The ecology of <i>Chondrus crispus</i> and <i>Gigartina stellata</i> (Rhodophyta) in Galway Bay	609
RAYMONT, J. E. G., <i>see</i> MORRIS <i>et al.</i>	181
RAYMONT, J. K. B., <i>see</i> MORRIS <i>et al.</i>	181
RIDGE, R. M. A. P.	
Physiological responses of stretch receptors in the pectoral fin of the ray <i>Raja clavata</i>	535
SARGENT, J. R., GATTEN, R. R., CORNER, E. D. S. and KILVINGTON, C. C.	
On the nutrition and metabolism of zooplankton. XI. Lipids in <i>Calanus helgolandicus</i> grazing <i>Biddulphia sinensis</i>	525
SCHMIDT, H.-E. and BENOVIĆ, A.	
Notes on hydromedusae (Cnidaria) from the Adriatic Sea	635
SCULLARD, C.	
<i>See</i> BAYNE and SCULLARD	355
<i>See</i> BAYNE and SCULLARD	371
SHEADER, M.	
The breeding biology of <i>Idotea pelagica</i> (Isopoda: Valvifera) with notes on the occurrence and biology of its parasite <i>Clypeoniscus hansenii</i> (Isopoda: Epicaridea)	659

	PAGE
Breeding and marsupial development in laboratory-maintained <i>Parthemisto gaudichaudi</i> (Amphipoda)	943
Production and population dynamics of <i>Ampelisca tenuicornis</i> (Amphipoda) with notes on the biology of its parasite <i>Sphaeronella longipes</i> (Copepoda)	955
SHUMWAY, S. E. and DAVENPORT, J. Some aspects of the physiology of <i>Arenicola marina</i> (Polychaeta) exposed to fluctuating salinities	907
SHUTTLEWORTH, T. J. See FREEMAN and SHUTTLEWORTH	97
See FREEMAN and SHUTTLEWORTH	501
See FREEMAN and SHUTTLEWORTH	889
SOUTHWARD, A. J. and SOUTHWARD, E. C. Distribution and ecology of the hermit crab <i>Clibanarius erythropus</i> in the western Channel	441
SOUTHWARD, E. C., see SOUTHWARD and SOUTHWARD	441
SWANN, C. L., see MADDOCK and SWANN	317
SWIFT, E., BIGGLEY, W. H. and NAPORA, T. A. The bioluminescence emission spectra of <i>Pyrosoma atlanticum</i> , <i>P. spinosum</i> (Tunicata), <i>Euphausia tenera</i> (Crustacea) and <i>Gonostoma</i> sp. (Pisces)	817
TAYLOR, A. C. and NAYLOR, E. Entrainment of the locomotor rhythm of <i>Carcinus</i> by cycles of salinity change	273
THOMSEN, H. A. External morphology of the choanoflagellate <i>Salpingoeca gracilis</i> James-Clark	629
TOTLAND, G. K., see KRYVI and TOTLAND	261
TYTLER, P. and BLAXTER, J. H. S. The effect of swimbladder deflation on pressure sensitivity in the saithe <i>Pollachius virens</i>	1057
VAN DER MEER, J. P., see MCLACHLAN, VAN DER MEER and BIRD	1137
WALKER, G. Observations by scanning electron microscope (S.E.M.) on the oviducal gland sacs of <i>Balanus balanoides</i> at egg-laying	969
WARREN, L. M. The ecology of <i>Capitella capitata</i> in British waters	151
WEST, A. B., see DE BURGH, WEST and JEAL	1031
WILSON, D. P. The distribution, development and settlement of the sabellarian polychaete <i>Lygdamis muratus</i> (Allen) near Plymouth	761
WILSON, J. B., HOLME, N. A. and BARRETT, R. L. Population dispersal in the brittle-star <i>Ophiocomina nigra</i> (Abildgaard) (Echinodermata: Ophiuroidea)	405

SHORT NOTES

AVES, C. R. and NICHOLS, D. Occurrence of the freshwater medusa <i>Craspedacusta</i> in Exeter Canal	569
FARMER, A. S. D. Epizoic Foraminifera on <i>Nephrops norvegicus</i>	877

ABSTRACTS OF MEMOIRS
RECORDING WORK AT THE PLYMOUTH LABORATORY

	PAGE
BAKER, P. F. and MCNAUGHTON, P. A., 1976. Kinetics and energetics of calcium efflux from intact squid giant axons	279
BERDUGO, V., HARRIS, R. P. and O'HARA, S. C., 1977. The effect of petroleum hydrocarbons on reproduction of an estuarine planktonic copepod in laboratory cultures	1145
BOALCH, G. T., 1975. The Lauder species of the diatom genus <i>Bacteriastrium</i> Shadbolt.	881
BRYAN, G. W., 1976. Some aspects of heavy metal tolerance in aquatic organisms.	279
CARTER, N., AUTON, J. and DANDO, P., 1976. Red cell carbonic anhydrase levels in flounders, <i>Platichthys flesus</i> L., from salt water and fresh water	571
CLARKE, M. R., MACLEOD, N. and PALIZA, O., 1976. Cephalopod remains from the stomachs of Sperm whales caught off Peru and Chile	881
CLOSSET, J. I., 1976. Parvalbumins of white muscles of Gadidae. I. Extraction and purification of the parvalbumins of the whiting (<i>Gadus merlangus</i> L.), of the coalfish (<i>G. virens</i> L.) and of the haddock (<i>G. aeglefinus</i> L.)	571
CLOSSET, J. I. and GERDAY, C., 1976. Parvalbumins of white muscles of Gadidae. II. Properties and existence of two evolutionary lineages	571
CORNER, E. D. S. and HARRIS, R. P., 1976. Hydrocarbons in marine zooplankton and fish. Part I. Zooplankton	280
DAVISON, W. and WHITFIELD, M., 1977. Modulated polarographic and voltammetric techniques in the study of natural water chemistry	881
DILLY, P. N., 1977. Material transport within specialised ciliary shafts on <i>Rhabdopleura</i> zooids.	1145
GIBBS, P. E., CLARK, A. M. and CLARK, C. M., 1976. Echinoderms from the northern region of the Great Barrier Reef, Australia	280
HEINLE, D. R., HARRIS, R. P., USTACH, J. F. and FLEMER, D. A., 1977. Detritus as food for estuarine copepods	1145
KEYNES, R. D. and ROJAS, E., 1976. The temporal and steady-state relationships between activation of the sodium conductance and movement of the gating particles in the squid giant axon	280
MCVEAN, A. and FINDLAY, I., 1976. Autotomy in <i>Carcinus maenas</i> : the role of the basi-ischiopodite posterior levator muscles	571
MANLY, R., 1976. The larval development of <i>Tricolia pullus</i> (L.)	881
MEVES, H. and VOGEL, W., 1977. Inactivation of the asymmetrical displacement current in giant axons of <i>Loligo forbesi</i>	1145
MEVES, H. and VOGEL, W., 1977. Slow recovery of sodium current and 'gating current' from inactivation	1146
MURALT, A. VON, WEIBEL, E. R. and HOWARTH, J. V., 1976. The optical spike. Structure of the olfactory nerve of pike and rapid birefringence changes during excitation	882
PAUL, D. H. and ROBERTS, B. L., 1977. Studies on a primitive cerebellar cortex. I. The anatomy of the lateral-line lobes of the dogfish, <i>Scyliorhinus canicula</i>	882
PAUL, D. H. and ROBERTS, B. L., 1977. Studies on a primitive cerebellar cortex. II. The projection of the posterior lateral-line nerve to the lateral-line lobes of the dogfish brain	882
PAUL, D. H. and ROBERTS, B. L., 1977. Studies on a primitive cerebellar cortex. III. The projection of the anterior lateral-line nerve to the lateral-line lobes of the dogfish brain	883

	PAGE
PAUL, D. H. and ROBERTS, B. L., 1977. The location and properties of the efferent neurons of the head lateral-line organs of dogfish	1146
PINGREE, R. D. and GRIFFITHS, D. K., 1977. The bottom mixed layer on the continental shelf	1146
PINGREE, R. D. and MARDELL, G. T., 1976. Bucket S.T.D. measurements	281
PURDOM, C. E., THOMPSON, D. and DANDO, P. R., 1976. Genetic analysis of enzyme polymorphism in plaice (<i>Pleuronectes platessa</i>)	883
ROBERTS, B. L. and RYAN, K. P., 1976. Myelinated synapse-bearing cell bodies in the central nervous system of <i>Scyliorhinus canicula</i> (L.)	281
SMITH, J. E., 1976. Early invertebrate zoology: men and their animals	883
WHITFIELD, M., 1975. Applications of ion-selective electrodes in the development of a chemical model for sea water	281
WHITFIELD, M., 1976. Stratified waters hold the key to the past	281
WHITFIELD, M., 1976. The evolution of the oceans and the atmosphere	1147
WICKSTEAD, J. H., 1975. Chordata: Acrania (Cephalochordata)	884
WILSON, D. P., 1977. The stability during many years of the mid-tidal shore at Penrhyn Bay, North Wales, and a note on the peat beds at Rhos-on-Sea	884
WILSON, D. P., 1977. <i>Modiolus modiolus</i> (L.) in small mid-tidal rock pools at Penrhyn Bay, North Wales	884
WITKOVSKY, P. and ROBERTS, B. L., 1976. Electron microscopic observations of the mesencephalic nucleus of the fifth nerve in the Selachian brain	572
ZAMMIT, V. A. and NEWSHOLME, E. A., 1976. Effects of calcium ions and adenosine diphosphate on the activities of NAD ⁺ -linked isocitrate dehydrogenase from the radular muscles of the whelk and flight muscles of insects	281
ZAMMIT, V. A. and NEWSHOLME, E. A., 1976. The maximum activities of hexokinase, phosphorylase, phosphofructokinase, glycerol phosphate dehydrogenases, lactate dehydrogenase, octopine dehydrogenase, phosphoenolpyruvate carboxykinase, nucleoside diphosphate kinase, glutamate-oxaloacetate transaminase and arginine kinase in relation to carbohydrate utilization in muscles from marine invertebrates	1147

BOOK NOTICES

<i>Aquaculture Practices in Taiwan</i> . By T. P. CHEN	283
<i>Biology of Opisthobranch Molluscs</i> . Volume I. By T. E. THOMPSON	283
<i>Effects of Pollutants on Aquatic Organisms</i> . Edited by A. P. M. LOCKWOOD	283
<i>Harvesting Polluted Waters: Waste Heat and Nutrient-Loaded Effluents in the Aquaculture</i> . Edited by O. DEVIK	283
<i>The Health of the Oceans</i> . By E. D. GOLDBERG	283
<i>Living Marine Molluscs</i> . By C. M. YONGE and T. E. THOMPSON	283
<i>Marine Ecology and Oil Pollution</i> . Edited by J. M. BAKER	284
<i>Marine Insects</i> . Edited by L. CHENG	284
<i>Marine Plankton Ecology</i> . By P. BOUGIS	284
<i>Analytical Methods in Oceanography</i> . Edited by T. R. P. GIBB, Jr.	573
<i>Estuarine Chemistry</i> . Edited by J. D. BURTON and P. S. LISS.	573

CONTENTS OF VOLUME 57

xiii

	PAGE
<i>Fishes of the World.</i> By J. S. NELSON	573
<i>Oceanic Management: Conflicting Uses of the Celtic Sea and Other Western U.K. Waters.</i> Edited by M. M. SIBTHORP assisted by M. UNWIN	573
<i>Photorespiration in Marine Plants.</i> Edited by N. E. TOLBERT and C. B. OSMOND	574
<i>Proceedings of the Third International Biodegradation Symposium, held at the University of Rhode Island, R.I. Sessions III, X, XXIV, IX. Materials Deterioration and Mechanisms of Deterioration. Sessions V, XXII. Microbiological Transformation of Metals. Session XXIII. Biodegradation of Wood.</i> Edited by J. M. SHARPLEY and A. M. KAPLAN	574
<i>Scientific Results of the German Deepsea Expedition on board the steamship 'Valdivia' 1898-1899. Volume 18: The Cephalopoda. Part I: Oegopsida. Part II: Myopsida, Octopoda.</i> By C. CHUN	574
<i>Strategies for Marine Pollution Monitoring.</i> Edited by E. D. GOLDBERG	574
<i>The Control of Oil Pollution on the Sea and Inland Waters: the effect of oil spills on the marine environment and methods of dealing with them.</i> Edited by J. WARDLEY-SMITH.	574
<i>Adaptation to Environment: Essays on the Physiology of Marine Animals.</i> Edited by R. C. NEWELL.	885
<i>Algae Abstracts: A Guide to the Literature. Volume 3, 1972-1974</i>	885
<i>Calcareous Algae.</i> By J. L. WRAY	885
<i>Coelenterate Ecology and Behavior.</i> Edited by G. O. MACKIE	885
<i>Environmental Toxicity of Aquatic Radionuclides - Models and Mechanisms.</i> Edited by M. W. MILLER and J. N. STANNARD	885
<i>Fish Population Dynamics.</i> Edited by J. A. GÜLLAND	886
<i>Introduction to Oceanography.</i> 2nd edition. By D. A. ROSS	886
<i>Seaweeds of the British Isles. Volume 1: Rhodophyta. Part I: Introduction, Nemaliales, Gigartinales.</i> By P. S. DIXON and L. M. IRVINE	886
<i>Marine Pollution.</i> Edited by R. JOHNSTON	1149
<i>A Nature Conservation Review: the selection of biological sites of national importance to nature conservation in Britain.</i> Edited by D. RATCLIFFE	1149
<i>Sound Production in Fishes.</i> Edited by W. N. TAVOLGA	1149
<i>The Underwater Handbook: A Guide to Physiology and Performance for the Engineer.</i> Edited by C. W. SHILLING, M. F. WERTS and N. R. SCHANDELMEIER	1149
<i>Variability of the Oceans.</i> By A. MONIN, V. KAMENKOVICH and V. KORT	1150

CORRIGENDA

Page 30, l. 1 and l. 7, for *Gracellaria* read *Gracilaria*.

VOLUME 56

INDEX

Page 1127, column 2, l. 55 for 276 read 627.

INSTRUCTIONS FOR THE PREPARATION OF MANUSCRIPTS

TITLE

The title of the paper should be kept as short as possible.

The name of the author at the beginning of the paper should be followed only by senior qualifications.

TEXT

Two copies of the typescript should be provided, double spaced throughout, on one side of quarto or A4 paper. Tables and legends for illustrations should be typed separately at the end of the manuscript. All pages should be numbered serially and fastened together securely. Words to be printed in italic should be underlined. The first mention of Latin names of species should be followed by the authority except where reference is made to a work in which the authority appears (e.g. *Plymouth Marine Fauna*).

All linear measurements and weights should be in the metric scale.

For symbols and abbreviations, the recommendations of the Royal Society (1951) are followed.

TABLES

Tables should be set out on separate sheets numbered in Arabic numerals, and given a concise heading.

FIGURES

Figures should be in black ink. It is important to make the lines sufficiently black.

All illustrations will be reduced to a size not exceeding 20 × 14 cm. No illustrations should be submitted which will not fit into an envelope 35 × 47 cm (12 × 16 inches).

Lettering, numerals, etc. should be marked clearly in pencil and the exact position in which they are to be inserted should be indicated. Symbols on the figure should be kept to a minimum and details given in the legend.

Axes and graduation marks on graphs must be inked in. The lines on graph paper are not normally reproduced, and should be blue or faint grey.

Legends for figures must be typed all together on a separate sheet, and not inserted on the actual illustrations.

Figures are numbered in arabic numerals, and referred to in the text as 'Fig. 1', etc.

All line-drawings are printed as figures, as well as photographs for which fine detail is not required.

PLATES

Photographs should be on smooth-surfaced paper, semi-matt or glossy. The edges of the photograph must be trimmed square. It is important that the background in the photograph be of a uniform tone and free from blemishes.

Divisions of plates, or separate figures on one plate, are indicated by capital letters.

SUMMARY

Each paper must be accompanied by an informative Summary, giving the main results of the work published.

REFERENCES

References are listed alphabetically at the end of the paper. The full title of the paper must be given. Titles of papers, but not of books, are decapitalized. Titles of Journals are given in full. Where a volume appears in parts the part need only be specified where each has separate pagination. References to books should include the publisher. Citations in text to be given by author's name followed by date in brackets.

Examples:

GOLDBERG, E. D., 1965. Minor elements in sea water. In *Chemical Oceanography*, vol. 1 (ed. J. P. Riley and G. Skirrow), pp. 163-196. New York: Academic Press.

MARSHALL, S. M., NICHOLLS, A. G. & ORR, A. P., 1939. On the growth and feeding of young herring in the Clyde. *Journal of the Marine Biological Association of the United Kingdom*, 23, 427-455.

RUSSELL, F. S. & YONGE, C. M., 1928. *The Seas*. 379 pp. London: Frederick Warne.

Authors are requested to see that their manuscripts are in finished form and completely ready for publication so that corrections may be reduced to a minimum, and these are confined as far as possible to the first proof. If the cost for correction exceeds a reasonable figure, the author is liable to be charged the full extent of the excess.

SUBSCRIPTIONS

Journal of the Marine Biological Association of the United Kingdom is published quarterly. Single parts cost £13.00 net (US \$30.00 in the U.S.A. and Canada) plus postage.

Four parts form a volume. The 1977 subscription price of a volume (which includes postage) is £45.00 net (US \$105.00 in the U.S.A. and Canada).

Second class postage paid at New York, N.Y.

© The Marine Biological Association of the UK 1977

PERMISSIONS

For permission to reproduce material from *Journal of the Marine Biological Association*, please apply to the London or New York office of Cambridge University Press.

ISI Tear Service, 325 Chestnut Street, Philadelphia, Pennsylvania 19106, U.S.A., is authorized to supply single copies of separate articles for private use only.