

CORRIGENDUM

Film deposition and transition on a partially wetting plate in dip coating – CORRIGENDUM

Peng Gao, Lei Li, James J. Feng, Hang Ding and Xi-Yun Lu

doi:10.1017/jfm.2016.64, Published by Cambridge University Press,
22 February 2016

Figure 5 of the published paper should be replaced by the figure shown below. The comparison between Figures 5 and 6 illustrates the important distinction between regimes II and III, with the formation of a Landau–Levich–Derjaguin film (figure 6) once the capillary number is sufficiently large.

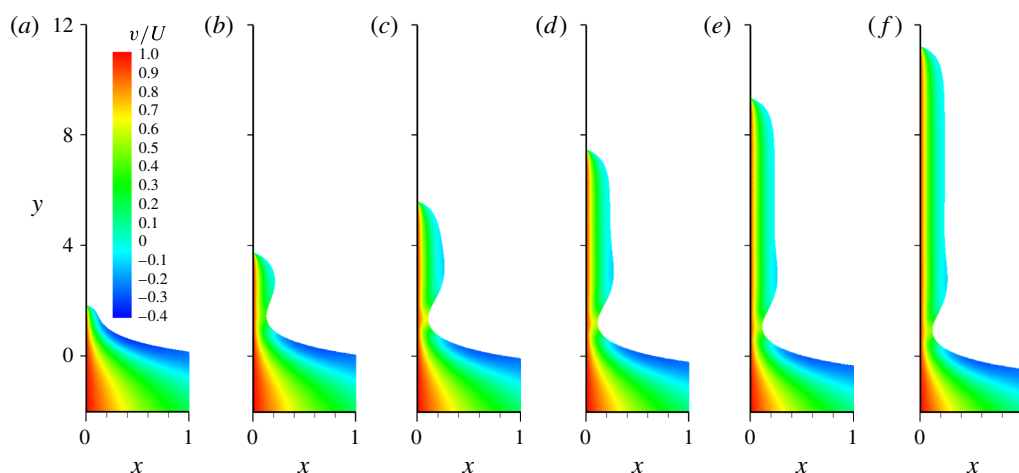


FIGURE 5. (Colour online) (Corrected) Time evolution of the interface for $Ca = 0.029$ in regime II. (a) Corresponds to $t = 200$, and the time difference between successive panels is $\Delta t = 200$, where time is scaled by $\mu_1 \ell_c / \sigma$ and the same dimensionless time is used in the following figures. The lower fluid is coloured by the value of the vertical velocity v/U to indicate the gravity-driven flow. The flow in the upper fluid is not shown for clarity.

REFERENCE

GAO, P., LI, L., FENG, J. J., DING, H. & LU, X.-Y. 2016 Film deposition and transition on a partially wetting plate in dip coating. *J. Fluid Mech.* **791**, 358–383.