






## Project Gallery

# Palaeolithic archaeology in the conglomerate caves of north-eastern Iberia

Juan I. Morales<sup>1,2,3,\*</sup> , Artur Cebrià<sup>3</sup>, Josep M. Vergès<sup>1,2</sup>,  
Sandra Bañuls-Cardona<sup>1,2</sup>, Josep M. Cervelló<sup>3</sup>, Raquel Hernando<sup>1,2</sup> ,  
Diego Lombao<sup>1,2</sup> , Juan Marín<sup>1,2,4</sup>, Roser Marsal<sup>5</sup>, F. Xavier Oms<sup>3</sup>,  
José Rabuñal<sup>6,7</sup>, Antonio Rodríguez-Hidalgo<sup>1,8,9</sup>, María Soto<sup>10,11</sup>, Antonio Rosas<sup>12</sup>  
& Josep M. Fullola<sup>3</sup>

<sup>1</sup> Institut Català de Paleocologia Humana i Evolució Social (IPHES-CERCA), Tarragona, Spain

<sup>2</sup> Dept. Història i Història de l'Art, Universitat Rovira i Virgili, Tarragona, Spain

<sup>3</sup> SERP, Departament d'Història i Arqueologia, Universitat de Barcelona, Spain

<sup>4</sup> Histoire naturelle de l'Homme préhistorique (UMR 7194), Musée de l'Homme, Paris, France

<sup>5</sup> Dept. de Ciències de l'Antiguitat i de l'Edat Mitjana, Universitat Autònoma de Barcelona, Bellaterra, Spain

<sup>6</sup> Instituto Universitario de Investigación en Arqueología y Patrimonio Histórico, Universidad de Alicante, Spain

<sup>7</sup> Department of Archaeology and Heritage Studies, Aarhus University Moesgård, Højbjerg, Denmark

<sup>8</sup> Instituto de Evolución en África (IDEA), Madrid, Spain

<sup>9</sup> Dept. Prehistoria, Historia Antigua y Arqueología, Universidad Complutense, Madrid, Spain

<sup>10</sup> Madrid Institute for Advanced Study-Casa Velázquez, Madrid, Spain

<sup>11</sup> Departamento de Prehistoria y Arqueología, Universidad Autónoma de Madrid, Spain

<sup>12</sup> Group of Paleoanthropology, Museo Nacional de Ciencias Naturales-CSIC, Madrid, Spain

\* Author for correspondence ✉ [jignacio.morales@gmail.com](mailto:jignacio.morales@gmail.com)

Large, conglomerate caves in north-eastern Iberia have been significant places since the Neolithic through to historical times; however, their significance during the Palaeolithic has barely been explored. This project is the first systematic study of the use of these iconic geological landmarks among Pleistocene hunter-gatherers.

Keywords: Iberian Peninsula, Middle Palaeolithic, Upper Palaeolithic, rock art, conglomerate karst, caves

## The conglomerate caves

In north-eastern Iberia, the margins of the Ebro Depression are characterised by conglomeratic formations that originated as Palaeogene alluvial fans of the fluvial systems discharging into the Ebro Basin. These Palaeogene coastal areas form an exceptional geological area, recognised by UNESCO as the Central Catalonia Global Geopark, that hosts several natural parks (Parc Natural) on the iconic conglomerate massifs of Sant Llorenç del Munt, Montserrat and Montsant. Neogene karstification processes resulted in abundant cave complexes within these formations, such as the Montserrat Caves, the Simanya and Ànimes cave systems in Sant Llorenç del Munt, or the Cova de la Font Major in l'Espuga de Francolí (Figure 1).

Received: 26 October 2021; Revised: 21 January 2022; Accepted: 7 February 2022

© The Author(s), 2022. Published by Cambridge University Press on behalf of Antiquity Publications Ltd. This is an Open Access article, distributed under the terms of the Creative Commons Attribution licence (<https://creativecommons.org/licenses/by/4.0/>), which permits unrestricted re-use, distribution, and reproduction in any medium, provided the original work is properly cited.

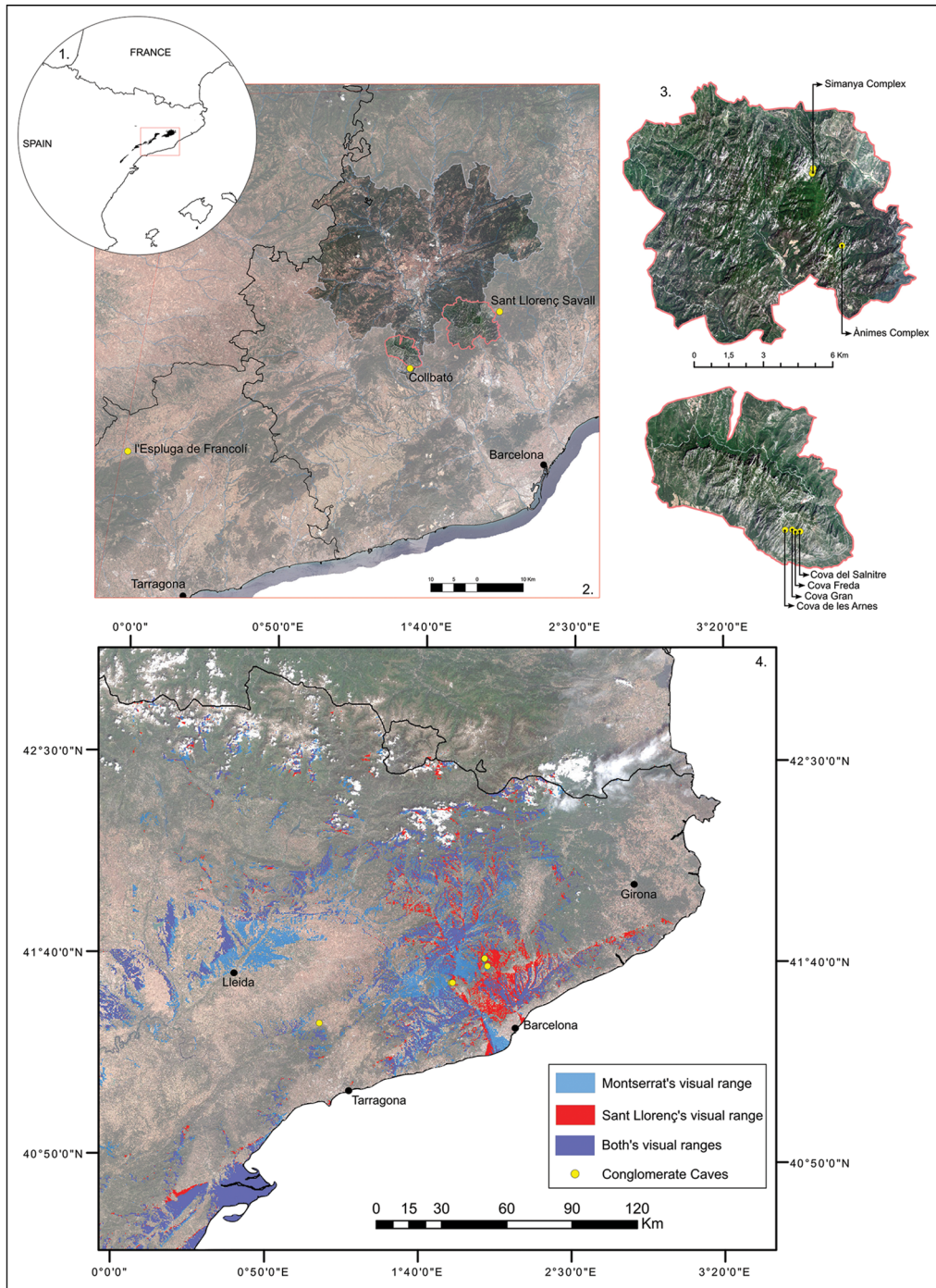


Figure 1. Palaeogene conglomerate formations in north-eastern Iberia (1); 2) Central Catalonia Global Geopark (grey outline), and natural parks of Montserrat and Sant Llorenç del Munt (red outline); 3) main conglomerate caves at Sant Llorenç del Munt (top) and Montserrat (bottom); 4) territorial visibility of the Montserrat and Sant Llorenç massifs (maps created in ArcMap 10.7, © J.I. Morales; orthophotomaps from ICGC ([www.icgc.cat](http://www.icgc.cat))).

These caves have been archaeologically recorded since the early 1900s, when excavations at Montserrat's Cova Gran and Cova Freda produced the first Neolithic Cardial ware in Europe, then known as *Montserratina* (Colomines 1925). In 1930, Holocene materials were recovered from the Simanya cave system, and Cova de la Font Major was recognised as an exceptional Early Neolithic site in the 1950s (Vilaseca 1969). Complex sedimentary dynamics and extensive roof collapses have prevented modern archaeological investigation, but not regular looting, resulting in some extant archaeological collections, but also an abundance of untraceable ones.

## The attractiveness

The Catalan conglomerates are today recognised as defining different regions. These formations separate the inland plains from the littoral and pre-littoral regions, in which the Palaeolithic record is broadly established by sites such as Cova Foradada, La Griera and Cova del Gegant, among others. Furthermore, the Monserrat and Sant Llorenç massifs border the main natural corridors that connect the northern mountainous areas, including the Pyrenean valleys, with the coastal regions within the Llobregat and Besòs basins. Along these pathways are found key Middle Palaeolithic sites with sequences ranging from 40 ka to the MIS-5 (c. 70–130 ka BP), such as Abric Romaní and Coves del Toll.

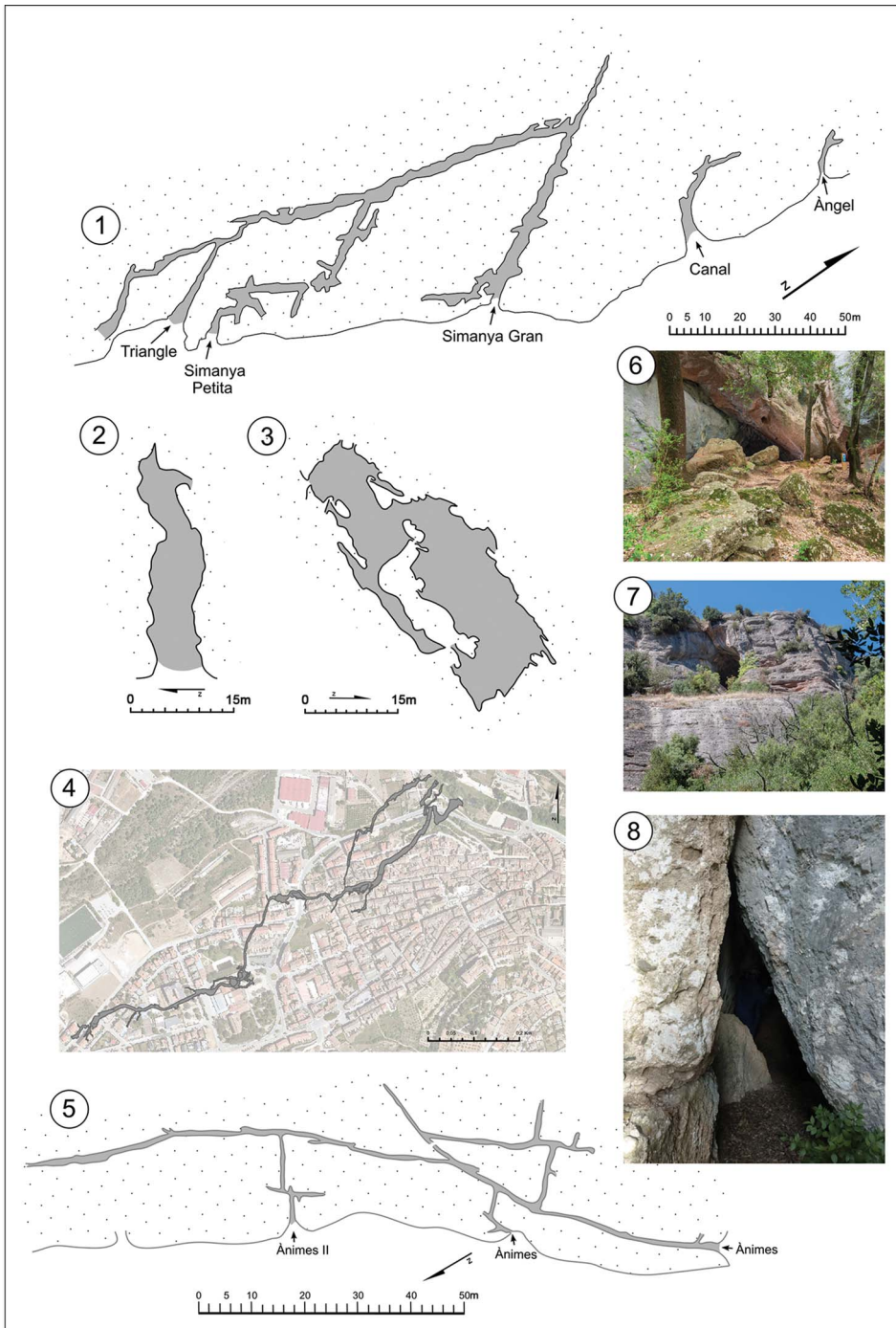
The conglomerate massifs and their caves are majestic landmarks that have played an important role in the imagination since the Neolithic (<7.5 ka BP), and archaeological and historical data provide plenty of evidence of their special character. Montserrat and Sant Llorenç have attracted writers, artists and geographers since at least the sixteenth century, and naturalists, speleologists and hikers actively explored these areas throughout the nineteenth and twentieth centuries. In earlier periods, the Romans used Simanya Gran as a cemetery during the fifth century AD, while in the Iron Age (eighth to sixth century BC), caches of singular materials were deposited at Cova Gran and Cova Freda, and an exceptional coeval sanctuary (seventh to third century BC) has been discovered on the inner river shores of Cova de la Font Major. Late Neolithic inhumations are ubiquitous here, and a cache of thousands of Neolithic seashell beads was found at the Ànimes complex. Before this, the first farmers arriving to Iberia visited and used these places systematically during the Early Neolithic (Cebrià *et al.* 2014; Oms *et al.* 2019). The question remains, however: did Palaeolithic groups repeatedly occupy these caves and view them as exceptional locations?

## The project

This question triggered the first systematic approach to the Palaeolithic archaeology of the Catalan conglomerate caves (Figure 2). Preliminary evidence pointed to the potential preservation of the Pleistocene record, such as faunal remains recovered during the 1930s and 1970s at Simanya Gran and during the 1990s at Cova de la Font Major, as well as uncatalogued stone tools from Cova Gran that had been stored for decades at Montserrat Abbey (Gorina 1930; Genera & Carreras 2007).

In 2016, we began locating, recovering and studying every extant collection from the caves in order to reconstruct their archaeological life histories, while fieldwork commenced with sieving the ancient backfill blocking the galleries of the Ànimes complex, revealing unstratified





*Figure 2. Ground plans of the conglomerate caves: 1) projection of the Cova de la Font Major itinerary over the l'Espluga de Francolí village; 2–3) Simanya and Ànimes complexes (Sant Llorenç del Munt); 4–5) Cova Freda and Cova Gran caves (Montserrat); 6–8) entrances to Triangle, Simanya Gran and Canal (Simanya cave complex, Sant Llorenç del Munt) (drawings and photographs © J.I. Morales).*



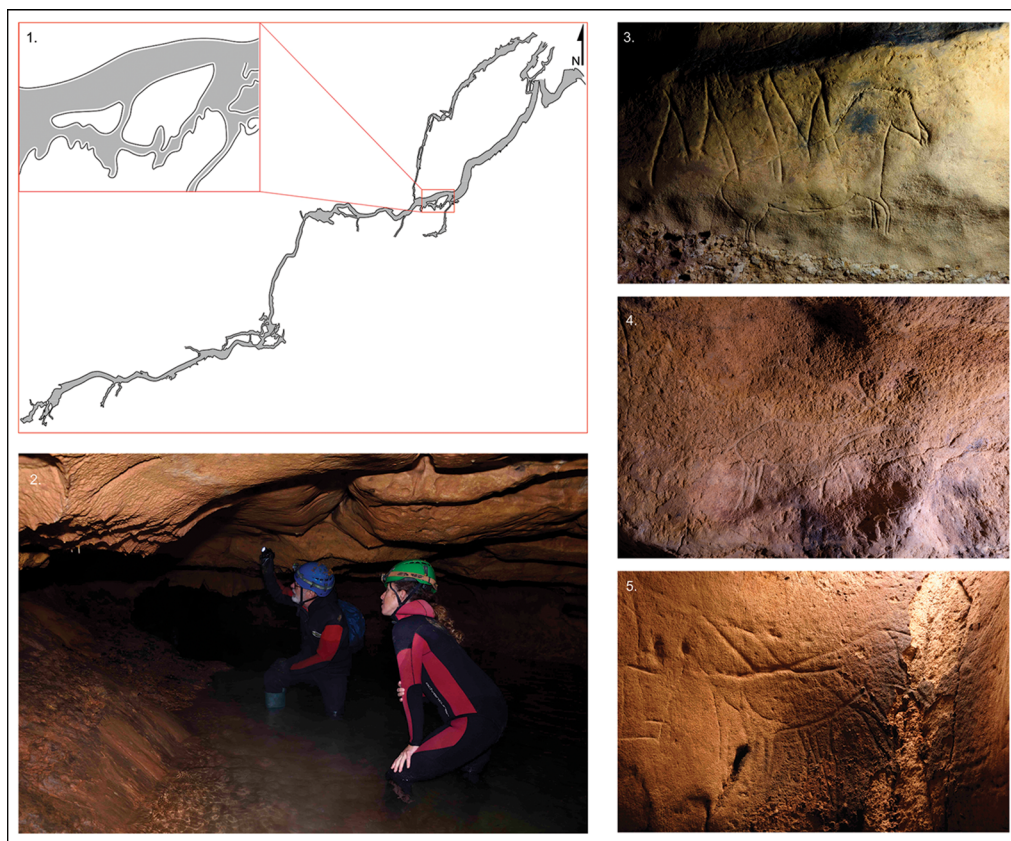


Figure 3. Cova de la Font Major: 1) location of the major accumulation of engravings; 2) exploration of the inner galleries; 3–5) Palaeolithic representations: horse (3), cervid (4) and overlapped undefined herbivores (5) (photographs © J.M. Vergès).

Pleistocene faunal remains. Later, in 2018, the first test-pitting was undertaken at Montserrat's Cova Gran and Cova Freda, while work at Cova Canal and Simanya Gran in the Sant Llorenç massif, and at Cova de la Font Major began between 2019 and 2020. These investigations have documented the Palaeolithic record at Cova de la Font Major, Cova Gran and Simanya Gran.

At Cova de la Font Major, fieldwork has exposed Upper Palaeolithic occupations that have been severely disturbed by Holocene fluvial activity. Investigation of the cave has, nevertheless, led to the discovery of the first rock-art sanctuary in north-eastern Iberia. Currently, around 100 Palaeolithic-style engraved figurative representations have been documented (Figure 3), marking the site as the most important cave containing Palaeolithic rock-art in the Iberian northern Mediterranean.

In 2018, well-preserved Upper Palaeolithic occupations were discovered at Cova Gran de Montserrat (Figure 4), and the 2019 and 2020 seasons focused on the extraction of large conglomerate blocks from the collapsed ceilings to allow for a larger excavation area. This led to the discovery of domestic occupation, with structured hearths and a microlithic technology dating to the Magdalenian and Epipalaeolithic. Furthermore, a test pit also confirmed the

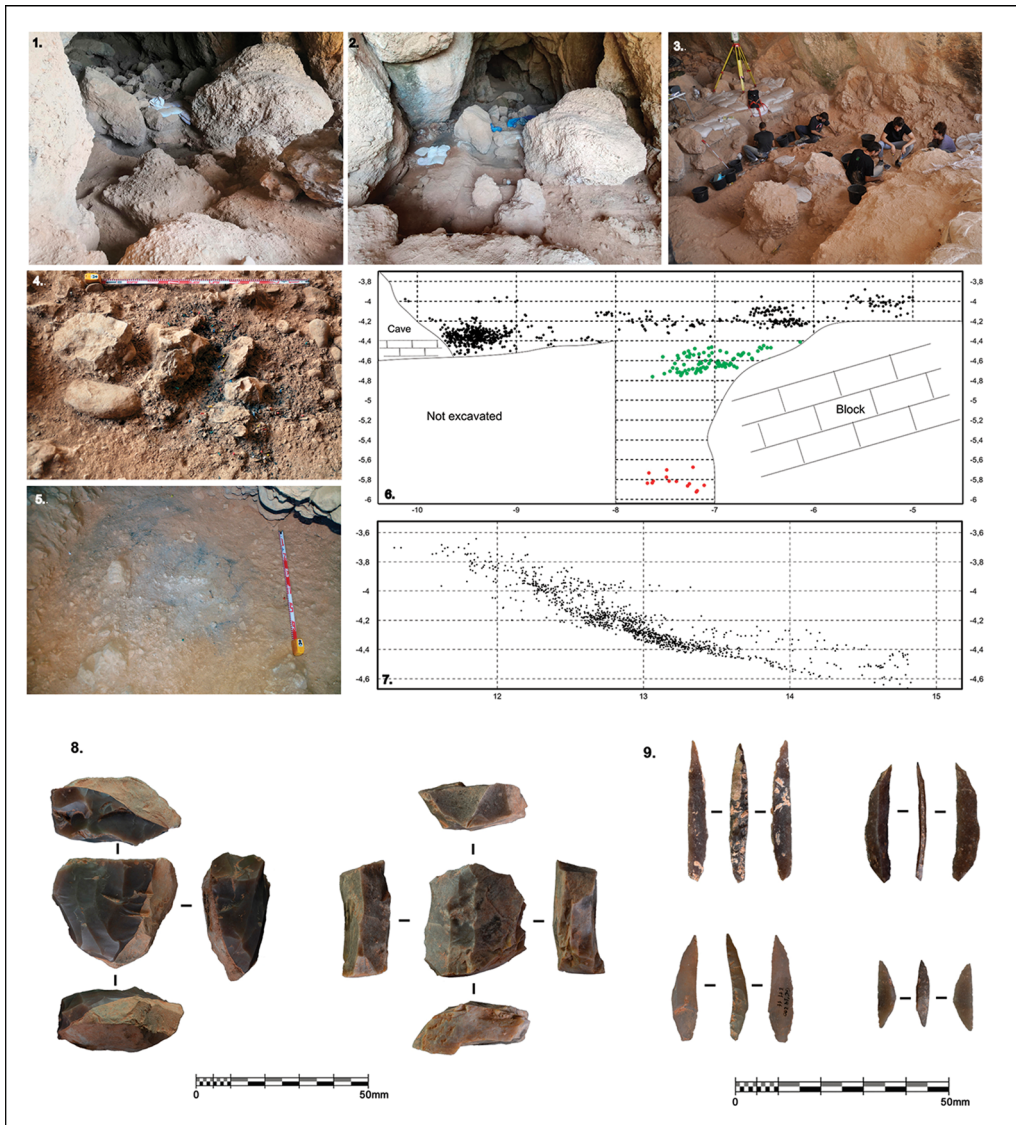


Figure 4. Cova Gran de Montserrat: 1–3) general view of the excavation area in 2019, 2020 and 2021; 4–5) Late Palaeolithic combustion features; 6–7) transverse (6) and longitudinal (7) plotting of the archaeological layers documented in the test pit; 8–9) laminar cores (8) and backed bladelets (9) from the Late Upper Palaeolithic occupations (photographs © Maria Guillen-IPHES).

preservation of 1.5m of stratigraphy containing continuous, undiagnostic Upper Palaeolithic occupations and Middle Palaeolithic layers at the bottom. The upcoming expansion of the test pit will provide the data necessary for characterising this cultural sequence.

Finally, at Simanya Gran (Figure 5), a cemented layer containing Pleistocene faunal remains was documented in 2020 and partially excavated in 2021. Remains of brown bear (*Ursus arctos*) and cave bear (*Ursus spelaeus*), together with the carnivore-derived accumulation of Pyrenean

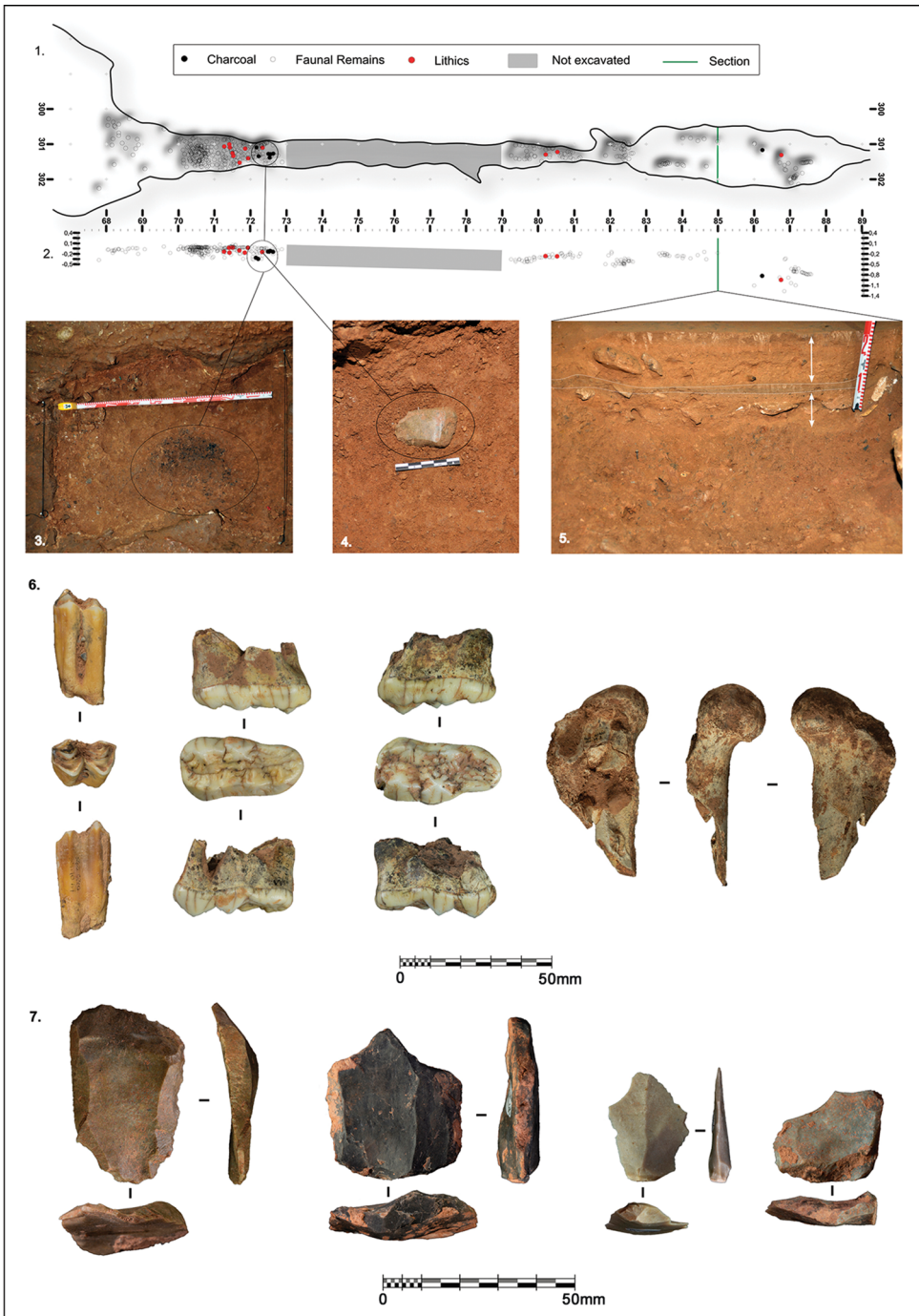


Figure 5. Simanya Gran, 2021 excavation: 1–2) horizontal (1) and longitudinal (2) plotting of the recorded materials; 3–4) combustion feature and associated Middle Palaeolithic stone tool; 5) evidence of undocumented excavations: a previous superficial layer enclosed between two backfill deposits; 6) fauna, from left to right: left lower first molar of *Capra pyrenaica*, right upper second molar and left upper second molar of *Ursus arctos*, carnivore-gnawed left proximal femur of *Capra pyrenaica*; 7) lithic flakes recovered during the 2021 excavation (photographs © Maria Guillen-IPHES).

© The Author(s), 2022. Published by Cambridge University Press on behalf of Antiquity Publications Ltd.



ibex (*Capra pyrenaica*) have been recovered, as well as Middle Palaeolithic stone tools, cut-marked bones, charcoal accumulations and a human tooth. Surprisingly, all these materials were found in a small gallery less than 1m wide and between 70 and 90m inside the cave.

Early results from the project are fulfilling our highest expectations about the use of these conglomerate caves by Palaeolithic hunter-gatherers. Future mid-term objectives of the project will be:

- 1) to define the stylistic succession and the chronology of the rock-art assemblage from Cova de la Font Major;
- 2) to define a transitional sequence through the excavations at Cova Gran de Montserrat, which is of particular significance due to the scarcity of continuous sequences in northern Mediterranean Iberia (Morales *et al.* 2016, 2019);
- 3) to constrain the chronology of the Middle Palaeolithic occupations at Cova Simanya and explore the potential preservation of additional human remains;
- 4) and to continue test-pitting of the remaining conglomerate caves where the Palaeolithic sequence has not yet been reached.

## Acknowledgements

We are highly indebted to Joan Lleonart and Josep Fígols, who enabled the research at Sant Llorenç del Munt, and to Angel Miño (Parc Natural de Sant Llorenç del Munt i l'Obac), Parc Natural de Montserrat and Collbató City Council for their support.

## Funding statement

This research is funded by the Generalitat de Catalunya's Culture Department (CLT009/18/00024 and 00053) and AGAUR (2017SGR-0011 and 1040), the Spanish Ministry of Science (PID2020-113960GB-I00) and the City Council of l'Espluga de Francolí. A.R.-H., J.I.M. and M.G. are supported by the Spanish Ministry of Science and Innovation through the *Maria de Maeztu* excellence accreditation (CEX2019-000945-M); M.S. is the beneficiary of the UAM TyV Program, R.H. of the URV 2019PMF-PIPF-59 grant and J.R.R. of the UA MARSALAS21-22 grant.

## References

- CEBRIÀ, A. *et al.* 2014. Nuevos datos para el Neolítico antiguo en el nordeste de la Península Ibérica procedentes de la Cova del Toll (Moià, Barcelona) y de la Cova de la Font Major (l'Espluga de Francolí, Tarragona). *Trabajos de Prehistoria* 71: 134–45.  
<https://doi.org/10.3989/tp.2014.12128>
- COLOMINES, J. 1925. *Prehistòria de Montserrat*. Montserrat: Monestir de Montserrat.
- GENERA, M. & A. CARRERAS. 2007. La Cova de la Font Major (l'Espluga de Francolí, Conca de Barberà). *Jornades d'Arqueologia de Tortosa* 1999: 87–92.
- GORINA, P. 1930. La prehistòria de Sant Llorenç del Munt: ceràmica eneolítica en la Cova Simanya. *Arxiu del Centre excursionista de Terrassa* 64: 96–98.
- MORALES, J.I. *et al.* 2016. Expanding the geography of the Middle to Upper Palaeolithic transition: Foradada Cave (Calafell, Spain), a new

- site on the Iberian Mediterranean coastline. *Antiquity* Project Gallery 351. Available at: <https://www.antiquity.ac.uk/projgall/morales351> (accessed 10 February 2022).
- 2019. The Middle-to-Upper Paleolithic transition occupations from Cova Foradada (Calafell, NE Iberia). *PLoS ONE* 14: e0215832. <https://doi.org/10.1371/journal.pone.0215832>
- OMS, F.X. *et al.* 2019. Nuevas intervenciones en la Cova Gran y la Cova Freda de Montserrat (Collbató, Barcelona) casi 100 años después. *Trabajos de Prehistoria* 76: 335–44. <https://doi.org/10.3989/tp.2019.12241>
- VILASECA, S. 1969. Cueva de la Font Major. *Trabajos de Prehistoria* 26: 117–220.