


Spatial parasitology and the unmapped human helminthiases

Catherine G. Schluth¹, Claire J. Standley^{2,3}, Shweta Bansal¹
and Colin J. Carlson^{1,2,3} 

¹Department of Biology, Georgetown University, Washington, DC, USA; ²Department of Microbiology and Immunology, Georgetown University Medical Center, Washington, DC, USA and ³Center for Global Health Science and Security, Georgetown University Medical Center, Washington, DC, USA

Systematic Review

Cite this article: Schluth CG, Standley CJ, Bansal S, Carlson CJ (2023). Spatial parasitology and the unmapped human helminthiases. *Parasitology* **150**, 391–399. <https://doi.org/10.1017/S0031182023000045>

Received: 28 August 2022
Revised: 29 December 2022
Accepted: 4 January 2023
First published online: 12 January 2023

Keywords:

Bayesian modeling; ecological niche modeling; helminth parasites; medical geography; parasite biogeography; spatial statistics; systematic review

Author for correspondence:

Colin J. Carlson,
E-mail: Colin.Carlson@georgetown.edu

Abstract

Helminthiases are a class of neglected tropical diseases that affect at least 1 billion people worldwide, with a disproportionate impact on resource-poor areas with limited disease surveillance. Geospatial methods can offer valuable insights into the burden of these infections, particularly given that many are subject to strong ecological influences on the environmental, vector-borne or zoonotic stages of their life cycle. In this study, we screened 6829 abstracts and analysed 485 studies that use maps to document, infer or predict transmission patterns for over 200 species of parasitic worms. We found that quantitative mapping methods are increasingly used in medical parasitology, drawing on One Health surveillance data from the community scale to model geographic distributions and burdens up to the regional or global scale. However, we found that the vast majority of the human helminthiases may be entirely unmapped, with research effort focused disproportionately on a half-dozen infections that are targeted by mass drug administration programmes. Entire regions were also surprisingly under-represented in the literature, particularly southern Asia and the Neotropics. We conclude by proposing a shortlist of possible priorities for future research, including several neglected helminthiases with a burden that may be underestimated.

Introduction

Infections with parasitic worms, or *helminthiases*, have a massive global burden on human health. More than a billion people are infected with soil-transmitted helminths alone, with a total burden of over 3.3 million disability-adjusted life years (DALYs) (Pullan *et al.*, 2014); these may be underestimates, given more recent estimates that hookworms alone may account for more than 4 million DALYs (Weatherhead *et al.*, 2017). The burden of these infections is highly heterogeneous over space, from case clustering at the community level up to the global scale. Helminthiases persist and recur disproportionately where health-care systems are too limited for routine treatment, preventative therapies and case management; but these areas are, conversely, often the places where disease surveillance is most limited, and so the burden of these infections is most poorly characterized.

Many previous studies have therefore identified geospatial analysis as a key part of scientific and clinical work on helminthiases. As a basic tool of descriptive epidemiology, maps are one of the simplest and easiest ways to visualize data, communicate risk and engage local communities in participatory research methods. Moreover, geospatial modelling can help fill knowledge gaps about the prevalence or incidence of infectious diseases in under-sampled regions, turning clinical data into a more continuous view of transmission. With enough data, this approach can be used to translate local prevalence surveys into regional and global estimates of incidence or burden. Along the way, geospatial modelling often illuminates environmental and social risk factors for the disease, and perhaps most importantly, helps practitioners target, evaluate and improve interventions.

Previous reviews of infectious disease cartography have evaluated research effort and set priorities for future pathogens to map (Hay *et al.*, 2013; Pigott *et al.*, 2015), but have only minimally addressed the human helminthiases. A systematic analysis of research trends could help identify the limitations of existing data, target interventions more effectively and broaden the scope of helminth research and control. Here, out of over 6000 candidate mapping studies, we examine a total of 485 scientific studies that developed empirical maps of over 200 helminth species known to infect humans. From these studies, we evaluate trends in research methodology and scope, highlight global gaps in research effort and propose a list of neglected helminthiases that researchers (and surveillance systems) could prioritize in future geospatial studies.

Methods

Identifying candidate species

To compile a list of human-associated helminth species, we used a recently published dataset of host–parasite associations curated by the Natural History Museum in London (Dallas,

© The Author(s), 2023. Published by Cambridge University Press. This is an Open Access article, distributed under the terms of the Creative Commons Attribution licence (<http://creativecommons.org/licenses/by/4.0/>), which permits unrestricted re-use, distribution and reproduction, provided the original article is properly cited.

2016). From these data, we compiled a list of human helminthiasis by searching for associations with *Homo sapiens*, and recording the number of references listed for each species. There were 407 helminth species on this initial list. To verify whether each helminth species is still considered taxonomically valid and is capable of infecting humans, we manually searched for records of human infection for each species. In Google Scholar, we used the search queries '[species name]' and 'human*' to search for records of human infection. In Google, we used the search queries '[species name]' and 'syn*' to determine if species with no records or only old records of human infection have since been renamed. We removed a species from the study if we could find no evidence that the species infects humans, the species name was found to be synonymous with a more recent species name on the list, there was conflicting evidence as to whether the species can infect humans or the species was found to infect humans only as a hybrid with another helminth species. This left a total of 232 taxonomically valid human helminthiasis.

Systematic review

Taking an iterative approach to data collection, we used *Wuchereria bancrofti* as a test species to determine which search terms would be most effective to retrieve helminth mapping studies. On Google Scholar, we used the search queries '*Wuchereria bancrofti*' and 'mapping'. Based on an informal analysis of the results, we selected a final set of keywords that consistently signalled that empirical spatial analysis was undertaken. Our final search query was '[species name]' and ('SaTScan' or 'MaxEnt' or 'spatial cluster*' or 'spatial analysis' or 'geospatial' or 'ecological niche model*' or 'mapping' or 'nearest neighbor' or 'spatial GLM*'). To identify candidate studies, we searched PMC and PubMed for these terms with each of the 232 helminth species, one by one. Our search may have missed mapping studies that were written and published in other languages, as well as grey literature produced by health ministries or non-governmental organizations; as such, our study represents only a snapshot of the retrievable literature.

Our literature review was conducted between November 2018 and May 2019 (and is, as such, limited to the pre-pandemic period), following PRISMA guidelines (see Fig. S1). We included studies in our dataset if they presented novel data or a new modelling product representing the known or predicted spatial distribution of a helminth species, the condition(s) it causes, and/or the medication used to treat it; studies were excluded if they did not use empirical data to generate either a map-based visualization or a spatial model of human helminthiasis infection over space. Two authors conducted the review and both verified each study that was selected for inclusion. In total, we found 485 studies that mapped a total of 45 helminth species. For each study in the final dataset and analysis, we recorded all available information on: the full binomial nomenclature of helminth species being mapped; the citation for and link to each study; the year each study was conducted; the spatial scope of each study; the specific methodologies used in each mapping effort; the sample size and type in each study; whether each study addressed uncertainty and population at risk; whether each study examined coendemicity and/or coinfection among helminth species or between helminth species and other diseases and whether each study publicly archived the associated data.

Ontology of study methodology

To develop an ontology of research methods (Augustijn-Beckers *et al.*, 2022), we examined the mapping methodology of studies

and grouped them into a handful of non-exclusive categories, adapted from a previously published study on tick-borne disease mapping (Lippi *et al.*, 2021):

- **Grey data** describe the presentation of spatial point data of either cases or positive–negative testing results. For attempts to develop *post hoc* databases and risk maps, these are data that could be heads-up digitized and reused (provided they have not been jittered for data security and anonymization).
- **Prevalence mapping** refers to raw or aggregated prevalence data presented on a map; like grey data, this is a presentation of raw data, but with more granularity with respect to intensity of transmission. For our purposes, this also includes non-prevalence quantitative measures of transmission intensity, e.g. fecal egg counts.
- **Prevalence modelling** refers to using statistical models to analyse or reconstruct patterns of prevalence, involving either a model with an explicit spatial component or spatial covariates (e.g. climate data), or spatial autocorrelation analyses such as Moran's I or autocorrelograms. (E.g. a binomial logistic regression that is stratified by age and sex alone would not qualify for this; such a model incorporating distance to rivers, gridded rainfall or a conditionally autoregressive term would qualify.)
- **Cluster analysis** refers to spatial clustering methods such as SaTSCAN or directional distribution models (standard deviation ellipse), a subset of prevalence modelling focused on identifying specific, discrete points and areas of case clusters or transmission hot spots.
- **Risk mapping** refers broadly to the projection of modelled risk surfaces over a continuous area or at regional levels; this involves at least some amount of inference of risk, from a model of prevalence or occurrence, and visual presentation of modelled results (i.e. not hand-drawn or expert-informed maps).
- **Ecological niche modelling** is a subtype of risk mapping, for when authors explicitly refer to habitat suitability models, ecological niche models or species distribution models as the methodology being used. Risk maps with ecological covariates are arguably habitat suitability models *sensu lato*, but not necessarily part of that specific body of literature.
- Finally, **endemicity mapping** refers to the delineation of known or suspected zones of endemicity or transmission, based on expert knowledge and/or historical or published data reused or consolidated to identify likely zones. For example, this can be the identification of possibly at-risk communities, or the mapping of survey results at the national level for a whole continent.

Results

Helminthiasis are a topic of growing interest in medical geography

We found a total of 485 studies that mapped human helminthiasis across a mix of scales, regions, pathogens and purposes. The number of helminth mapping studies has steadily increased since 2000 (Fig. 1), and the field is still growing rapidly. Across all time periods, we found that most studies use maps first and foremost as a data visualization tool (case occurrence data or prevalence maps; Fig. 2); however, the last decade has seen a particular shift towards advanced statistical modelling and machine-learning approaches. In particular, tools from ecological niche modelling began to be used around 2007–2010, when the most popular algorithms (MaxEnt and GARP) began to cross over into medical geography. This particular approach to predictive modelling is continuing to become more popular

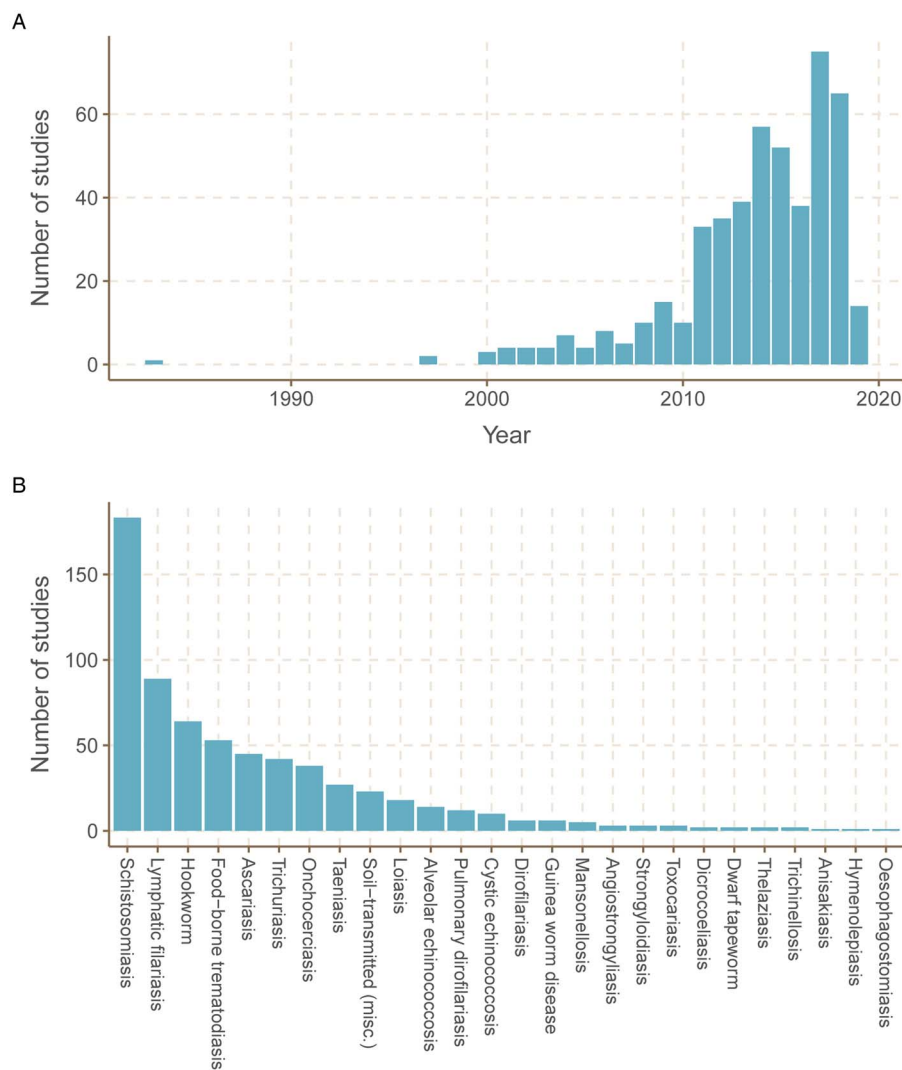


Fig. 1. (A) Efforts to map the human helminthiases have increased over time. (B) Spatial data for a few helminthiases make up the majority of all human helminth spatial data. The 45 helminth species with spatial data were grouped together by the conditions they cause (e.g. *Wuchereria bancrofti* and *Brugia malayi* are grouped as lymphatic filariasis).

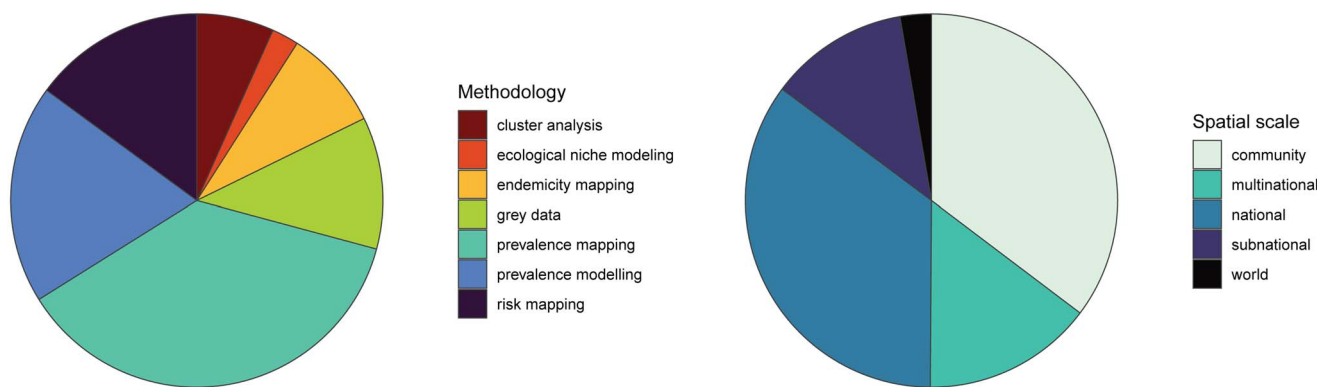


Fig. 2. Existing human helminth spatial data predominantly comes from small-scale prevalence mapping studies. Studies containing spatial data on human helminthiases were characterized by spatial scale and methodology, with several studies employing more than 1 methodology.

as more disease ecologists become involved in neglected tropical disease research. In the last decade, we also observed a methodological shift away from studies using licensed software such as ArcGIS, and increasingly taking advantage of open-source software such as QGIS and GRASS or console programs such as R and Python. These accessible software can be easily used by researchers and stakeholders without the financial barriers of proprietary software that are prohibitive even for many in the Global North.

Spatial scale and global gaps

We found that the vast majority of mapping studies were boots-on-the-ground epidemiological research conducted in a single community or a handful of communities within a single country (Fig. 2). We found relatively few large-scale (multinational to global) prevalence or risk maps, likely because the raw prevalence data are unsynthesized in a modifiable format or, for many infections, have never been collected at sufficient

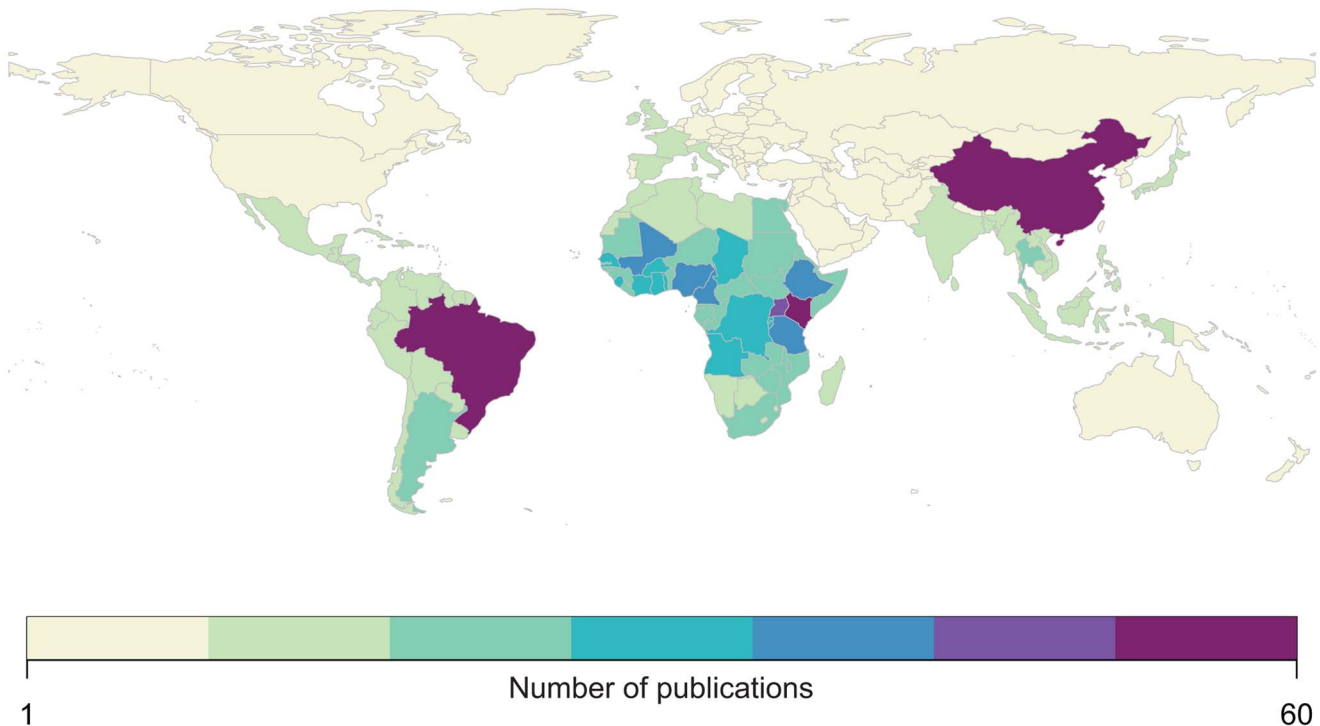


Fig. 3. Most published spatial research on human helminthiasis describes incidence and burden in sub-Saharan Africa (particularly Kenya and Uganda), China and Brazil.

scale. We also found that the distribution of research effort has been strikingly uneven (Fig. 3). Hot spots of research in China, Brazil and tropical sub-Saharan Africa reflect a mix of population size, infectious disease burden and unique aspects of the medical parasitology community of practice (e.g. Fiocruz in Brazil). However, we found major research gaps in South and Southeast Asia, the Middle East and Latin America and the Caribbean, despite the high parasite burden faced by many communities in these regions (e.g. Salam and Azam, 2017). Overall, these findings suggest that the global burden of many helminthiasis might be underestimated, especially if parasite prevalence is high in research and surveillance cold spots.

Most human helminthiasis are unmapped or undermapped

Of the 232 species targeted by our systematic review, only 45 had any associated studies – indicating nearly 200 unmapped species of human parasites. Out of those 45, a half-dozen of the best-known conditions – the major vector-borne helminthiasis (schistosomiasis, lymphatic filariasis and onchocerciasis) and soil-transmitted helminthiasis (hookworms, *Ascaris* and *Trichuris*) – account for the vast majority of research effort (Fig. 1). Unsurprisingly, these infections account for the majority of the total burden of helminthiasis on global health and poverty. Ascariasis is the most common helminth infection in the world, thought to infect between 737 million and 872 million people worldwide (Vos *et al.*, 2017), and is a major cause of stunting and malnutrition in children. *Trichuris* and hookworms have a similarly massive burden, infecting roughly 435 million and 450 million people worldwide, respectively (Vos *et al.*, 2017). Schistosomiasis infects between 179 million and 200 million people worldwide (Vos *et al.*, 2017), with a high burden especially in HIV-coendemic areas. Aside from these infections, all other human helminthiasis are generally presumed to infect fewer than 100 million people worldwide.

Feedbacks between mapping and interventions

Research effort also reflects feedbacks among mapping work, ease of treatment and scale of interventions. A small number of infections are targeted by mass drug administration (MDA) programmes, both because of cheap widely available treatments and because they account for the highest global burden. These programmes are naturally complimentary with spatial analysis: defining the boundaries of a community, testing people or animals for helminthiasis and updating endemicity maps are among the easiest ways to visualize burden and decide on the frequency and distribution of drug administration. This ongoing feedback of prevalence studies, GIS work and targeted drug administration has been a key part of successful MDA efforts over the past 20 years, not just to tailor efforts but also to measure their success and justify ongoing funding. These programmes are therefore the main reason that broad, synthetic data and cartography are possible for a small subset of the best-mapped helminthiasis (i.e. soil-transmitted helminths, schistosomiasis, lymphatic filariasis and onchocerciasis). Conversely, we found that most infections without readily available anthelmintic treatments were relatively understudied, or never appeared in our dataset.

Soil-transmitted helminths are also exceptional in that most have a relatively simple life cycle; as such, prevalence data in humans are usually likely to capture the extent of transmission (though see Nejsum *et al.*, 2012). In contrast, many under-represented helminth species were zoonotic, likely because complex life cycles or wildlife hosts make them more challenging targets for surveillance. When non-human hosts are studied, they are almost always livestock (especially cattle and sheep), pets (cats and dogs) or synanthropic wildlife (rats and mice); true wildlife hosts account for a small fraction of studies (Fig. 4). Some of the most understudied helminthiasis are the ones that complete parts of their life cycle in hosts that are particularly difficult to sample, such as fish and marine mammals (e.g. *Anisakis* or *Diphyllobothrium*). Similarly, vector-borne transmission adds

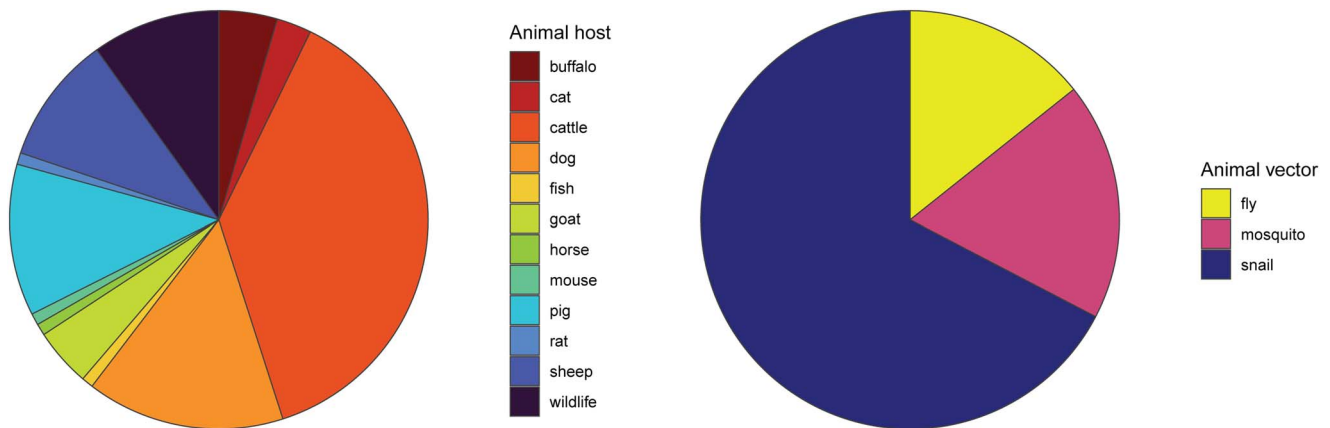


Fig. 4. Among studies that map other helminth hosts or helminth vectors, studies mapping less mobile hosts and vectors predominate. Baboons, antelopes and wild boars were classified as wildlife hosts; some studies mapped multiple non-human hosts.

another layer of ecological influence, which can make ecological models more useful, but primary data collection more challenging; we found more studies collected spatial data on snails (the ‘vectors’, or more accurately intermediate hosts, of schistosomiasis) than on more mobile vectors such as mosquitoes or flies. Surprisingly, even for soil-transmitted species, we found that environmental sampling is nearly never reported (Fig. S2).

Coinfections, coendemicity and syndemic interactions

We found that a surprising number of mapping studies directly addressed helminth coinfections and coendemicity. Many surveillance programmes – especially those guiding MDA – inherently collect data on multiple helminthiasis at once (e.g. Kato-Katz screening can detect *Ascaris*, *Trichuris*, schistosomiasis, hookworms and other eggs of other parasites as well). Studies that map hot spots of coinfection (e.g. Raso *et al.*, 2006; Pullan *et al.*, 2008; Brooker and Clements, 2009) can help prioritize where treatment might have the greatest social and economic benefits. These approaches can also address more complicated syndemic interactions (Singer *et al.*, 2017): for example, onchocerciasis control programmes often use ivermectin, a drug that can cause severe neurological complications or even death when administered to a patient with loiasis (Wanji *et al.*, 2018). Increasingly, mapping studies have been used to address *Onchocerca-Loa* coendemicity in west and central Africa, helping practitioners to delineate where ivermectin can be administered safely, and where other interventions such as vector control might be safer and more effective.

Finally, we found over a dozen studies that addressed coinfections or coendemicity of helminthiasis with other infections. Most of these studies focused on malaria: 3 studies mapped coinfections with hookworms (Brooker and Clements, 2009; Brooker *et al.*, 2012; Adu-Gyasi *et al.*, 2018), 2 with schistosomiasis (Kabateraine *et al.*, 2011; Doumbo *et al.*, 2014) and another with lymphatic filariasis (Stensgaard *et al.*, 2011). Integrated mapping can address different aspects of syndemic interactions: for example, some helminthiasis share a preventable transmission route with other pathogens (e.g. *Anopheles* mosquitoes transmit both malaria and lymphatic filariasis); others are treatable with the same drugs [artemisinin, a widely used antimalarial, also targets immature schistosomes (Bergquist and Elmorshedy, 2018); recent evidence suggests ivermectin in blood meals may reduce *Anopheles* mosquito lifespan (Derua *et al.*, 2015; Mekuriaw *et al.*, 2019)]. Perhaps the most elusive facet of helminthiasis’ burden is their immunomodulatory effects, which can have unpredictable impacts on other diseases: for example, while

Schistosoma mansoni or hookworm infections may increase susceptibility to malaria, *Schistosoma haematobium* infections may confer protection against severe malaria (Adegnika and Kremsner, 2012; Donohue *et al.*, 2019). In any of these contexts, helminthiasis are worth considering in broader efforts to measure and reduce the global burden of the disease.

Discussion

Here, we screened over 6000 studies, and found extensive literature on the human helminthiasis that incorporated geospatial approaches (nearly 500 studies). However, we found that most of these studies were focused on a half-dozen or so parasites with a simple life cycle, available low-cost treatments and the greatest global burden – the circumstances that make elimination programmes a cost-effective investment. For the vast majority of human helminthiasis, we found no geospatial data or analysis of any kind in the studies we reviewed. Some of these parasites may only sporadically infect humans, but several others are known to have an uncertain but likely medium-to-high global burden. Often, these neglected helminthiasis have a complex (zoonotic or vector-borne) life cycle that both complicates surveillance and limits the feasibility of vertical control programmes (especially if elimination is precluded by non-human reservoirs). For these neglected infections, there are many opportunities for mapping work to both establish a clearer baseline on global burden, and to support One Health interventions that include vector control, community sanitation, food safety, livestock vaccination, routine deworming of household pets and similar practices. In service of this goal, we propose a shortlist of several notable but neglected human helminthiasis that were underrepresented in the literature (Table 1).

Table 1. An (incomplete) list of high-priority helminthiasis for geospatial research

1. Angiostrongyliasis (*Angiostrongylus cantonensis*)
2. Hepatic and intestinal capillariasis (*Capillaria hepatica*, *Capillaria philippinensis*)
3. Carcinogenic food-borne trematodiasis (*Clonorchis sinensis*, *Opisthorchis viverrini*)
4. Guinea worm disease (*Dracunculus medinensis*)
5. Echinococcosis (*Echinococcus granulosus*, *Echinococcus multilocularis*)
6. Gastrodiscoidiasis (*Gastrodiscoides hominis*)
7. Dwarf tapeworm (*Hymenolepis nana*)
8. Mansonellosis (*Mansonella perstans*, *Mansonella ozzardi*, *Mansonella streptocerca*)
9. Strongyloidiasis (*Strongyloides stercoralis*)
10. Taeniasis and cysticercosis (*Taenia solium*)

Opportunities for global burden (re-)estimation

Several helminthiasis with a global distribution have a likely high but uncertain burden, which could be clarified by a coordinated data synthesis and geospatial modelling effort – potentially motivating more global investment in prevention and treatment. For example, see the sub-sections below.

Echinococcosis

Echinococcus granulosus and *Echinococcus multilocularis* are zoonotic tapeworms that cause cystic and alveolar echinococcosis, respectively. These infections typically remain asymptomatic for years until cysts grow large enough to disrupt organ function; when they rupture, or (in the latter case) result in liver failure, case fatality rates are relatively high (Wen *et al.*, 2019). Between the 2 infections, recent estimates place the global burden roughly 19 000 deaths per year out of nearly a million active cases (World Health Organization, 2016). Treatment is difficult, and may require surgery, but infections can also be prevented with a One Health strategy that includes slaughterhouse hygiene and deworming dogs. Global summaries of prevalence data at the national or subnational level have recently been compiled not just for human hosts, but also wildlife and domesticated hosts (Deplazes *et al.*, 2017); these data could be readily applied to more detailed, fine-scale geospatial modelling.

Taeniasis and cysticercosis

A zoonotic parasite of swine, *Taenia solium* is endemic worldwide in communities with poor sanitation and consumption of undercooked pork. Intestinal infection with the adult tapeworm is usually mild, but fecal–oral transmission between humans leads to paratenic infections that can form on the brain or on the spinal cord. These severe infections cause at least 28 000 deaths annually (World Health Organization, 2016), and account for at least a third of all epilepsy cases in endemic areas (Gripper and Welburn, 2017). Estimates range between 2 and 6 million infections worldwide, but some upper-end regional estimates (e.g. 1.2 million attributable epilepsy cases in India alone; Rajshkhar, 2016) suggest these may be global underestimates. A high-resolution global estimate of burden could help target One Health interventions pairing MDA for taeniasis with pig vaccination, which can eliminate the pathogen over just 4–5 years (Braae *et al.*, 2016).

Strongyloidiasis

Strongyloides stercoralis is a soil-transmitted nematode that infects tens of millions of people in rural communities without proper sanitation. Strongyloidiasis is often asymptomatic, but can be life-threatening in immunocompromised individuals. Our systematic review identified just 3 efforts to map this parasite – all national or community studies – highlighting an opportunity to consolidate existing surveillance data, and develop high-resolution maps of endemicity and burden. One recent study takes an important step towards filling this gap by developing a global ecological niche model for strongyloidiasis (Fleitas *et al.*, 2022), but data remain limited and more systematic efforts are needed.

Hymenolepiasis

The dwarf tapeworm *Hymenolepis nana* is one of the most common cestode parasites of humans. These infections are generally asymptomatic in adults, but more severe in children, especially when comorbid with malnutrition (Cabada *et al.*, 2016). Estimates of regional *H. nana* prevalence vary substantially, ranging from 0.2 to 28.4% in Asia and from 0.9 to 23% in the Americas (Vilchez Barreto *et al.*, 2017). Our literature review found only 2 mapping studies on *H. nana*, both community-

based studies in Angola and Ghana (Soares Magalhães *et al.*, 2013; Adu-Gyasi *et al.*, 2018). Future work could consolidate fine-scale surveillance datasets, and align them with other geospatial research on malnutrition and stunting (e.g. Osgood-Zimmerman *et al.*, 2018).

Opportunities for global distribution or risk mapping

For several other helminthiasis with a global distribution, a baseline global map of endemicity – or a risk map of the zoonotic niche and the socioenvironmental risk factors for infection – might be a substantial step forward. For example, see the sub-sections below.

Angiostrongyliasis

More commonly called rat lungworm, *Angiostrongylus cantonensis* is a rare but emerging infection endemic to Asia and the Pacific that causes eosinophilic meningitis (Cowie, 2013). Some infections are self-limiting, but others may cause significant neurological damage or death. The geographic range of the parasite has expanded over time, potentially facilitated by climate change and human movement, with several thousand cases reported worldwide (Cowie, 2013; Martins *et al.*, 2015). Existing literature on the parasite's global distribution has worked from sparse data (Martins *et al.*, 2015; Lu *et al.*, 2018), and future work could more directly address the parasite's zoonotic niche in both intermediate hosts (snails and slugs) and the ultimate host (rats).

Mansonellosis

An infection that has been called 'the most neglected human filariasis' (Mediannikov and Ranque, 2018), *Mansonella perstans* alone is thought to infect over 100 million people (Ta-Tang *et al.*, 2018), yet there are currently no large-scale control programmes targeting any *Mansonella* species. Our literature review identified 9 studies mapping mansonellosis, including a map of global endemicity. Future research could aim to generate a high-resolution global risk map to guide vector control efforts, particularly given that its *Culicoides* midge vectors also transmit several emerging infections (including bluetongue virus, Oropouche virus and African horse sickness).

Guinea worm disease

Unlike other infections on our shortlist, guinea worm disease cannot be considered neglected. Decades of control efforts brought *Dracunculus medinensis* close to being the first globally eradicated parasite, though canine reservoirs now jeopardize that progress (Molyneux and Sankara, 2017; Wilson-Aggarwal *et al.*, 2021). Despite the small number of remaining transmission foci, guinea worm was once found throughout the tropics. Little geospatial data have been consolidated on this century-long range contraction; the best available maps of its original range are hand-drawn estimates from the 1950s (May, 1952). Remapping the historical distribution of *D. medinensis* with modern technology and modelling methods could offer some insights into the previous successes of eradication campaigns, clarify the ongoing role of zoonotic reservoirs (Boyce *et al.*, 2020) and offer fresh motivation to eliminate guinea worm disease on the last remaining continent.

Opportunities for regional and community-based mapping

For a handful of the rarest or most neglected helminthiasis, more boots-on-the-ground studies of parasite prevalence in local communities are still needed, forming the quantitative basis of broader estimates of parasite distribution and prevalence.

Carcinogenic food-borne trematodiasis

Opisthorchis viverrini and *Clonorchis sinensis* are trematode parasites of fish (Sripa *et al.*, 2011), both of which seriously increase the risk of bile duct cancer (cholangiocarcinoma). The burden of *O. viverrini* is localized to southeast Asia and particularly to Thailand, which has the highest incidence of cholangiocarcinoma worldwide (Banales *et al.*, 2016); opisthorchiasis prevalence attains 70% in some communities, costing the country an estimated 120 million USD annually (Sripa *et al.*, 2011). *Clonorchis sinensis* has a much wider range throughout east Asia, infecting an estimated 35 million people (Kim *et al.*, 2016). Our systematic review found no community-based mapping efforts for *C. sinensis*, and very few for *O. viverrini*.

Capillariasis

Capillaria hepatica and *Capillaria philippinensis* cause hepatic and intestinal capillariasis, respectively. The former is believed to only infect humans rarely, while outbreaks of the latter have been sizable; both can be deadly, and are challenging to diagnose (Li *et al.*, 2010). Human infections with both parasites are apparently rare but widespread: *C. philippinensis* can be found throughout Asia and parts of North Africa and the Middle East, and *C. hepatica* is found in wildlife worldwide (Saichua *et al.*, 2008; Li *et al.*, 2010). However, our literature search did not identify any efforts to map either species.

Gastrodiscoidiasis

Gastrodiscoides hominis is a poorly characterized food-borne zoonotic fluke (Chai *et al.*, 2009), capable of causing diarrhoea, malnutrition and death. *Gastrodiscoides hominis* is thought to be highly prevalent in India especially, but cases occur throughout Asia and Africa (Dada-Adegbola *et al.*, 2004; Mas-Coma *et al.*, 2005). Our literature search did not identify any efforts to map *G. hominis* infection.

Broader opportunities for geospatial research

In less than a century, geospatial research on the human helminthiasis has advanced from hand-drawn world maps (May, 1952) to fine-scale maps of transmission, comorbidity and intervention priorities. This advance has been driven as much by the advent of powerful statistical methods such as Bayesian spatio-temporal models (Stensgaard *et al.*, 2011; Chammartin *et al.*, 2013; Scholte *et al.*, 2014) as it has been by the growing availability of national and transnational datasets of sufficient scale to power those models. Because these datasets only exist for a handful of infections, the benefits of these methodological advances have yet to be felt in many areas of medical parasitology. In this study, we find that there are significant opportunities to expand research along these lines, and thereby improve scientific and clinical understanding of some of the most neglected tropical and temperate diseases.

We conclude by noting that infectious diseases are rarely a stationary target for mapping and modelling. While geospatial methods are already widely used to track the progress of elimination programmes, we finally note that these tools will also have value as climate change drives shifts in the geographic distribution and burden of helminthiasis, their vectors and their wildlife reservoirs. As temperature rises, the range of hookworms is expected to expand towards the southernmost regions of Africa (Blum and Hotez, 2018); as *Anopheles* mosquitoes and other vectors undergo geographic range shifts (Carlson *et al.*, 2019), they may introduce parasites into new regions or undo progress towards elimination. In other cases, climate change may make environmental conditions less hospitable for parasites (Carlson *et al.*, 2017): angiostrongyliasis may lose range as China warns (York *et al.*, 2014),

and the snail intermediate hosts of schistosomiasis may begin to shrink as their habitats grow hotter and more arid (Blum and Hotez, 2018). Ecological modelling will help triage the greatest climate-related risks to human health, while other mapping methods will be critical to document the impacts of climate change in real time. In that light, One Health data on parasitic infections in humans, livestock, domestic animals and wildlife all become even more valuable – particularly when shared openly with sufficient geospatial metadata for reuse.

Supplementary material. The supplementary material for this article can be found at <https://doi.org/10.1017/S0031182023000045>

Acknowledgements. The authors acknowledge the relentless work of the scientists, clinicians and volunteers who have generated the scientific literature reviewed in this study.

Author's contributions. All authors contributed to the writing and conception of the manuscript.

Conflict of interest. The authors have no competing interest to declare.

Data availability. All data will be made available on Zenodo at the time of publication.

References

- Adegnika AA and Kreamsner PG (2012) Epidemiology of malaria and helminth interaction: a review from 2001 to 2011. *Current Opinion in HIV and AIDS* 7, 221–224.
- Adu-Gyasi D, Asante KP, Frempong MT, Gyasi DK, Iddrisu LF, Ankrah L, Dosoo D, Adeniji E, Agyei O, Gyaase S, Amenga-Etego S, Gyan B and Owusu-Agyei S (2018) Epidemiology of soil transmitted helminth infections in the Middle-Belt of Ghana, Africa. *Parasite Epidemiology and Control* 3, e00071.
- Augustijn-Beckers E-W, Amer S, Lemmens R and Bergquist R (2022) Does the Geohealth domain require a body of knowledge? *Geospatial Health* 17. doi: 10.4081/gh.2022.1171
- Banales JM, Cardinale V, Carpino G, Marzoni M, Andersen JB, Invernizzi P, Lind GE, Folseraas T, Forbes SJ, Fouassier L and Geier A (2016) Cholangiocarcinoma: current knowledge and future perspectives consensus statement from the European Network for the Study of Cholangiocarcinoma (ENS-CCA). *Nature Reviews Gastroenterology & Hepatology* 13, 261–280.
- Bergquist R and Elmorshedy H (2018) Artemether and praziquantel: origin, mode of action, impact, and suggested application for effective control of human schistosomiasis. *Tropical Medicine and Infectious Disease* 3, 125. doi: 10.3390/tropicalmed3040125
- Blum AJ and Hotez PJ (2018) Global 'worming': climate change and its projected general impact on human helminth infections. *PLoS Neglected Tropical Diseases* 12, e0006370.
- Boyce MR, Carlin EP, Schermerhorn J and Standley CJ (2020) A One Health approach for guinea worm disease control: scope and opportunities. *Tropical Medicine and Infectious Disease* 5, 159.
- Braae UC, Devleeschauwer B, Gabriël S, Dorny P, Speybroeck N, Magnussen P, Torgerson P and Johansen MV (2016) CystiSim – an agent-based model for *Taenia solium* transmission and control. *PLoS Neglected Tropical Diseases* 10, e0005184.
- Brooker S and Clements ACA (2009) Spatial heterogeneity of parasite co-infection: determinants and geostatistical prediction at regional scales. *International Journal for Parasitology* 39, 591–597.
- Brooker SJ, Pullan RL, Gitonga CW, Ashton RA, Kolaczinski JH, Kabatereine NB and Snow RW (2012). Plasmodium–helminth coinfection and its sources of heterogeneity across East Africa. *Journal of Infectious Disease Pharmacotherapy* 205, 841–852.
- Cabada MM, Morales ML, Lopez M, Reynolds ST, Vilchez EC, Lescano AG, Gotuzzo E, Garcia HH and White AC Jr (2016) *Hymenolepis nana* impact among children in the highlands of Cusco, Peru: an emerging neglected parasite infection. *The American Journal of Tropical Medicine and Hygiene* 95, 1031–1036.
- Carlson CJ, Burgio KR, Dougherty ER, Phillips AJ, Bueno VM, Clements CF, Castaldo G, Dallas TA, Cizauskas CA, Cumming GS, Doña J,

- Harris NC, Jovani R, Mironov S, Muellerklein OC, Proctor HC and Getz WM (2017) Parasite biodiversity faces extinction and redistribution in a changing climate. *Science Advances* 3, e1602422.
- Carlson CJ, Bannon E, Mendenhall E, Newfield T and Bansal S (2019) Rapid range shifts in African *Anopheles* mosquitoes over the last century. *bioRxiv* 673913. doi: 10.1101/673913
- Chai J-Y, Shin E-H, Lee S-H and Rim H-J (2009). Foodborne intestinal flukes in southeast Asia. *The Korean Journal of Parasitology* 47(suppl), S69–102.
- Chammartin F, Hürlimann E, Raso G, N’Goran EK, Utzinger J and Vounatsou P (2013) Statistical methodological issues in mapping historical schistosomiasis survey data. *Acta Tropica* 128, 345–352.
- Cowie RH (2013) Biology, systematics, life cycle, and distribution of *Angiostrongylus cantonensis*, the cause of rat lungworm disease. *Hawai’i Journal of Medicine & Public Health: A Journal of Asia Pacific Medicine & Public Health* 72, 6–9.
- Dada-Adegbola HO, Falade CO, Oluwatoba OA and Abiodun OO (2004) *Gastrodiscoides hominis* infection in a Nigerian-case report. *West African Journal of Medicine* 23, 185–186.
- Dallas T (2016) HelminthR: an R interface to the London natural history museum’s host–parasite database. *Ecography* 39, 391–393.
- Deplazes P, Rinaldi L, Alvarez Rojas CA, Torgerson PR, Harandi MF, Romig T, Antolova D, Schurer JM, Lahmar S, Cringoli G, Magambo J, Thompson RCA and Jenkins EJ (2017) Global distribution of alveolar and cystic echinococcosis. *Advances in Parasitology* 95, 315–493.
- Derua YA, Kisinza WN and Simonsen PE (2015) Differential effect of human ivermectin treatment on blood feeding *Anopheles gambiae* and *Culex quinquefasciatus*. *Parasites & Vectors* 8, 130.
- Donohue RE, Cross ZK and Michael E (2019) The extent, nature, and pathogenic consequences of helminth polyparasitism in humans: a meta-analysis. *PLoS Neglected Tropical Diseases* 13, e0007455.
- Doumbo S, Tran TM, Sangala J, Li S, Doumtable D, Kone Y, Traoré A, Bathily A, Sogoba N, Coulibaly ME, Huang C-Y, Ongoiba A, Kayentao K, Diallo M, Dramane Z, Nutman TB, Crompton PD, Doumbo O and Traore B (2014) Co-infection of long-term carriers of *Plasmodium falciparum* with *Schistosoma haematobium* enhances protection from febrile malaria: a prospective cohort study in Mali. *PLoS Neglected Tropical Diseases* 8, e3154.
- Fleitas PE, Kehl SD, Lopez W, Travacio M, Nieves E, Gil JF, Cimino RO and Krolewiecki AJ (2022) Mapping the global distribution of *Strongyloides stercoralis* and hookworms by ecological niche modeling. *Parasites & Vectors* 15, 197.
- Gripper LB and Welburn SC (2017) The causal relationship between neurocysticercosis infection and the development of epilepsy – a systematic review. *Infectious Diseases of Poverty* 6, 218–224. doi: 10.1186/s40249-017-0245-y
- Hay SI, Battle KE, Pigott DM, Smith DL, Moyes CL, Bhatt S, Brownstein JS, Collier N, Myers MF, George DM and Gething PW (2013) Global mapping of infectious disease. *Philosophical Transactions of the Royal Society of London. Series B, Biological Sciences* 368, 20120250.
- Kabatereine NB, Standley CJ, Sousa-Figueiredo JC, Fleming FM, Stothard JR, Talisuna A and Fenwick A (2011) Integrated prevalence mapping of schistosomiasis, soil-transmitted helminthiasis and malaria in lakeside and island communities in Lake Victoria, Uganda. *Parasites & Vectors* 4, 232.
- Kim T-S, Pak JH, Kim J-B and Bahk YY (2016) *Clonorchis sinensis*, an oriental liver fluke, as a human biological agent of cholangiocarcinoma: a brief review. *BMB Reports* 49, 590–597.
- Li C-D, Yang H-L and Wang Y (2010) *Capillaria hepatica* in China. *World Journal of Gastroenterology: WJG* 16, 698–702.
- Lippi CA, Ryan SJ, White AL, Gaff HD and Carlson CJ (2021) Trends and opportunities in tick-borne disease geography. *Journal of Medical Entomology* 58, 2021–2029.
- Lu X-T, Gu Q-Y, Limpanont Y, Song L-G, Wu Z-D, Okanurak K and Lv Z-Y (2018) Snail-borne parasitic diseases: an update on global epidemiological distribution, transmission interruption and control methods. *Infectious Diseases of Poverty* 7, 28.
- Martins YC, Tanowitz HB and Kazacos KR (2015) Central nervous system manifestations of *Angiostrongylus cantonensis* infection. *Acta Tropica* 141, 46–53.
- Mas-Coma S, Bargues MD and Valero MA (2005). Gastrodiscoidiasis, a plant-borne zoonotic disease caused by the intestinal amphistome fluke *Gastrodiscoides hominis* (Trematoda: Gastrodiscidae). *Revista Iberica de Parasitologia* 66, 75–81.
- May JM (1952) Map of the world distribution of helminthiasis. *Geographical Review* 42, 98–101.
- Mediannikov O and Ranque S (2018) Mansonellosis, the most neglected human filariasis. *New Microbes and New Infections* 26, S19–S22.
- Mekuriaw W, Balkew M, Messenger LA, Yewhalaw D, Woyessa A and Massebo F (2019) The effect of ivermectin® on fertility, fecundity and mortality of *Anopheles arabiensis* fed on treated men in Ethiopia. *Malaria Journal* 18, 1–10.
- Molyneux D and Sankara DP (2017) Guinea worm eradication: progress and challenges – should we beware of the dog? *PLoS Neglected Tropical Diseases* 11, e0005495.
- Nejsum P, Betson M, Bendall RP, Thamsborg SM and Stothard JR (2012) Assessing the zoonotic potential of *Ascaris suum* and *Trichuris suis*: looking to the future from an analysis of the past. *Journal of Helminthology* 86, 148–155.
- Osgood-Zimmerman A, Milliar AI, Stubbs RW, Shields C, Pickering BV, Earl L, Graetz N, Kinyoki DK, Ray SE, Bhatt S, Browne AJ, Burstein R, Cameron E, Casey DC, Deshpande A, Fullman N, Gething PW, Gibson HS, Henry NJ, Herrero M, Krause LK, Letourneau ID, Levine AJ, Liu PY, Longbottom J, Mayala BK, Mosser JE, Noor AM, Pigott DM, Piwoz EG, Rao P, Rawat R, Reiner RC, Smith DL, Weiss DJ, Wiens KE, Mokdad AH, Lim SS, Murray CJL, Kassebaum NJ and Hay SI (2018) Mapping child growth failure in Africa between 2000 and 2015. *Nature* 555, 41–47.
- Pigott DM, Howes RE, Wiebe A, Battle KE, Golding N, Gething PW, Dowell SE, Farag TH, Garcia AJ, Kimball AM, Krause LK, Smith CH, Brooker SJ, Kyu HH, Vos T, Murray CJL, Moyes CL and Hay SI (2015) Prioritising infectious disease mapping. *PLoS Neglected Tropical Diseases* 9, e0003756.
- Pullan RL, Bethony JM, Geiger SM, Cundill B, Correa-Oliveira R, Quinell RJ and Brooker S (2008) Human helminth co-infection: analysis of spatial patterns and risk factors in a Brazilian community. *PLoS Neglected Tropical Diseases* 2, e352.
- Pullan RL, Smith JL, Jasrasaria R and Brooker SJ (2014) Global numbers of infection and disease burden of soil transmitted helminth infections in 2010. *Parasites & Vectors* 7, 37.
- Rajshekhkar V (2016) Neurocysticercosis: diagnostic problems & current therapeutic strategies. *The Indian Journal of Medical Research* 144, 319–326.
- Raso G, Vounatsou P, Singer BH, N’Goran EK, Tanner M and Utzinger J (2006) An integrated approach for risk profiling and spatial prediction of *Schistosoma mansoni*-hookworm coinfection. *Proceedings of the National Academy of Sciences of the United States of America* 103, 6934–6939.
- Saichua P, Nithikakul C and Kaewpitoon N (2008) Human intestinal capillariasis in Thailand. *World Journal of Gastroenterology: WJG* 14, 506–510.
- Salam N and Azam S (2017) Prevalence and distribution of soil-transmitted helminth infections in India. *BMC Public Health* 17, 201.
- Scholte RGC, Gosoni L, Malone JB, Chammartin F, Utzinger J and Vounatsou P (2014) Predictive risk mapping of schistosomiasis in Brazil using Bayesian geostatistical models. *Acta Tropica* 132, 57–63.
- Singer M, Bulled N, Ostrach B and Mendenhall E (2017) Syndemics and the biosocial conception of health. *The Lancet* 389, 941–950.
- Soares Magalhães RJ, Façonny C, Gamboa D, Langa AJ, Sousa-Figueiredo JC, Clements ACA and Vaz Nery S (2013) Extending helminth control beyond STH and schistosomiasis: the case of human hymenolepiasis. *PLoS Neglected Tropical Diseases* 7, e2321.
- Sripa B, Bethony JM, Sithithaworn P, Kaewkes S, Mairiang E, Loukas A, Mulvenna J, Laha T, Hotez PJ and Brindley PJ (2011) Opisthorchiasis and Opisthorchis-associated cholangiocarcinoma in Thailand and Laos. *Acta Tropica* 120(suppl. 1), S158–S168.
- Stensgaard A-S, Vounatsou P, Onapa AW, Simonsen PE, Pedersen EM, Rahbek C and Kristensen TK (2011) Bayesian geostatistical modelling of malaria and lymphatic filariasis infections in Uganda: predictors of risk and geographical patterns of co-endemicity. *Malaria Journal* 10, 298.
- Ta-Tang T-H, Crainey JL, Post RJ, Luz SL and Rubio JM (2018) Mansonellosis: current perspectives. *Research and Reports in Tropical Medicine* 9, 9–24.
- Vilchez Barreto PM, Gamboa R, Santivañez S, O’Neal SE, Muro C, Lescano AG, Moyano L-M, González G, García HH and The Cysticercosis Working Group in Perú (2017) Prevalence, age profile, and associated risk factors for *Hymenolepis nana* infection in a large population-based study in northern Peru. *The American Journal of Tropical Medicine and Hygiene* 97, 583–586.
- Vos T, et al. (2017) Global, regional, and national incidence, prevalence, and years lived with disability for 328 diseases and injuries for 195 countries, 1990–2016: a systematic analysis for the Global Burden of Disease Study 2016. *The Lancet* 390, 1211–1259.

- Wanji S, Chounna Ndongmo WP, Fombad FF, Kengne-Ouafu JA, Njouendou AJ, Longang Tchounkeu YF, Koudou B, Bockarie M, Fobi G, ROUNGOU JB and Enyong PA** (2018) Impact of repeated annual community directed treatment with ivermectin on loiasis parasitological indicators in Cameroon: implications for onchocerciasis and lymphatic filariasis elimination in areas co-endemic with *Loa loa* in Africa. *PLoS Neglected Tropical Diseases* **12**, e0006750.
- Weatherhead JE, Hotez PJ and Mejia R** (2017) The global state of helminth control and elimination in children. *Pediatric Clinics of North America* **64**, 867–877.
- Wen H, Vuitton L, Tuxun T, Li J, Vuitton DA, Zhang W and McManus DP** (2019) Echinococcosis: advances in the 21st century. *Clinical Microbiology Reviews* **32**, e00075–18. doi: 10.1128/CMR.00075-18
- Wilson-Aggarwal JK, Goodwin CED, Swan GJF, Fielding H, Tadesse Z, Getahun D, Odiel A, Adam A, Marshall HH, Bryant J, Zingeser JA and McDonald RA** (2021) Ecology of domestic dogs (*Canis familiaris*) as a host for guinea worm (*Dracunculus medinensis*) infection in Ethiopia. *Transboundary and Emerging Diseases* **68**, 531–542.
- World Health Organization** (2016) *WHO Estimates of the Global Burden of Foodborne Diseases*. Geneva, Switzerland: World Health Organization.
- York EM, Butler CJ and Lord WD** (2014) Global decline in suitable habitat for *Angiostrongylus* (= *Parastrongylus*) *cantonensis*: the role of climate change. *PLoS ONE* **9**, e103831.