

A NOTE ON THRESHOLD FACTOR LEVEL(S) AND STONE-GEARY TECHNOLOGY

BRUCE R. BEATTIE*

Department of Agricultural and Resource Economics, The University of Arizona, Tucson, Arizona

SATHEESH ARADHYULA

Department of Agricultural and Resource Economics, The University of Arizona, Tucson, Arizona

Abstract. This article proposes the parsimonious Stone-Geary utility function from consumer choice theory as a production function model. The viability of the threshold input idea is empirically demonstrated for irrigation water (and in the case of nitrogen, a “gratis” threshold) using two field trials from the famous Hexem-Heady data sets. The implications of the Stone-Geary model for tractable U-shaped average variable cost and for factor demand and product supply are explored.

Keywords. Average variable cost, Stone-Geary production function, threshold input requirement

JEL Classifications. D24, A22, A23

1. Introduction

Agricultural economics has a rich heritage, not only in farm management and applied production economics, but in production theory as well—dating well before Heady’s 1952 classic treatise, *Economics of Agricultural Production and Resource Use*. Among others, two prominent pioneers were Spillman (1923, 1924 [with Lang]) and Black (1926). Despite this long-standing interest in applied production theory, a continuing frustration is that most of our empirically viable production function models—for example, Cobb-Douglas and constant elasticity of substitution—presume the production function emanates from the origin, that is, no output-axis nor input-axis intercept. However, for many important production function applications in agriculture, a threshold input requirement to obtain positive output is likely the case. Examples that

This article benefited from the helpful comments of Anubhab Gupta, Gary Thompson, and two anonymous journal referees. Remaining errors or misinterpretations are, of course, the sole responsibility of the authors.

*E-mail: beattie@email.arizona.edu

immediately come to mind are irrigation water in arid environments, minimum labor requirements for planting or harvesting a plot or field, and minimum energy requirements for vegetable production using greenhouse technology. In fact, it is hard to think of many production processes (agricultural or otherwise) where one might reasonably expect positive output with input levels near zero. That a proper production function model should accommodate the possibility of the production function emanating from some positive factor level along the input axis seems compelling.

Accommodating the threshold factor idea utilizing the Stone-Geary functional form as a production function model follows in the next section. We then provide empirical support for the validity of the threshold factor idea for irrigation water in the desert Southwest and finish with a brief summary and conclusions. As an aside, the attractive pedagogical implication of a Stone-Geary production function model for properties of the associated variable cost, average variable cost, and marginal cost curves are addressed in the Appendix. Also presented in the Appendix are the Stone-Geary functional forms for conditional and ordinary factor demands and product supply.

2. Stone-Geary and Threshold Factor Level(s)

Convention has it that the production function should emanate from the origin (i.e., it should exhibit neither a y -axis nor an x -axis intercept). However, the truth is that in most real-world situations, it is unlikely that a positive level of output is obtained with only a miniscule amount of input(s). Indeed, it is difficult to think of any modern-day manufacturing or construction (buildings, roads, and bridges) process where minimum or threshold levels of the requisite inputs (labor, materials, energy, and machine hours) are not the norm rather than the exception. The implication for production function specification is to impose an x -axis intercept with a kink in the production function at the threshold factor level. A functional form that accommodates either the possibility of a positive or negative x -axis intercept (depending on the sign of the threshold coefficient) is the Stone-Geary function.¹

¹ To the authors' knowledge, the Stone-Geary specification surprisingly has not been advocated/used in firm-level production economics applications, including agricultural applications. We found no firm-level applications for Stone-Geary production function, Stone-Geary technology, or other perturbations using Econlit, AgEconSearch, and Google Scholar. Several authors have, of course, used the Stone-Geary model to express consumer preferences in computable general equilibrium and other modeling (e.g., Smith and Espinosa, 1996). Shioji (2012), in a working paper, used a Stone-Geary functional form as a macroproduction function in an economic growth model. Kim (2005) proposed a Stone-Geary production function to obtain a flexible quasi-homothetic translog cost function. The thrust of Kim's paper is consideration of aggregation properties/rules for properly specifying an industry-level production function.

Assume a production function with two-variable factors with thresholds and one fixed factor without a threshold:

$$y = \begin{cases} 0 & \text{for } x_1 \leq a_1 \text{ or } x_2 \leq a_2 \\ A(x_1 - a_1)^{b_1}(x_2 - a_2)^{b_2}x_3^{b_3} & \text{otherwise,} \end{cases} \quad (1)$$

where y is output, x_1 and x_2 are variable factors, and x_3 is a fixed factor. The threshold requirements for x_1 and x_2 indicate that their employment must exceed some threshold level, specifically a_1 for x_1 and a_2 for x_2 , for positive output.² The idea/construction is similar to the Stone-Geary utility function in consumer theory in which the consumer is presumed to require some minimal amount of some goods for survival—before gaining further utility from consumption of those goods (Geary, 1950; Stone, 1954).³

To simplify exposition, consider a single-variable-factor case by fixing x_2 at $x_2^0 > a_2$ and x_3 at x_3^0 , and letting $\alpha = A(x_2^0 - a_2)^{b_2}(x_3^0)^{b_3}$ in equation (1), yielding

$$y = \begin{cases} 0 & \text{for } x_1 \leq a_1 \\ \alpha(x_1 - a_1)^{b_1} & \text{otherwise,} \end{cases} \quad (2)$$

where $\alpha > 0$, $a_1 > 0$, and $0 < b_1 < 1$. Assuming $a_1 = 9$, $\alpha = 2$, and $b_1 = 1/2$, equation (2) suggests a kink in the production function at 9 units of x_1 as depicted in Figure 1.

An advantage of modeling threshold effects using a Stone-Geary model rather than by simply adding a negative constant term to a Cobb-Douglas or a quadratic polynomial model is that multiple threshold effects (owing to the individual variable factors) are disentangled. This could be particularly important when, as demonstrated in our empirical application, the individual factor threshold effects are opposite in sign. We might expect a negative sign for a_1 if, for example, x_1 was fertilizer nitrogen. Because a crop obtains plant available nitrogen from sources in addition to applied fertilizer, it is almost always the case that positive output (albeit suboptimal) is obtained even when applied nitrogen is zero. When

2 Note that equation (1) is not homogenous in x_1 and x_2 . However, if equation (1) is thought of as a yield function, then we might think of x_1 and x_2 as being expressed in units per some third factor, which is fixed. In agricultural applications, output and the two inputs might be, for example, bushels of wheat per acre, fertilizer per acre, and labor per acre, respectively. Total output would simply be the product of the yield function times the number of acres. An advantage of this formulation is that the short-run yield function need not exhibit constant proportional returns in the per unit input variables, and yet the long-run production function would be linearly homogenous—exhibit constant returns to scale (Beattie, Holt, and Watts, 2002).

3 Interestingly, the Geary utility function was first proffered by Samuelson (1947–1948) 2 years before Geary's famous two-page note, which in turn predates Stone's paper by 2 years. Neary (1997) cleverly notes that the functional form would more accurately be called "... 'the Samuelson-Geary utility function corresponding to the Klein-Rubin linear expenditure system whose estimation was pioneered by Stone.' But there seems little point in trying to replace established practice with such a mouthful."

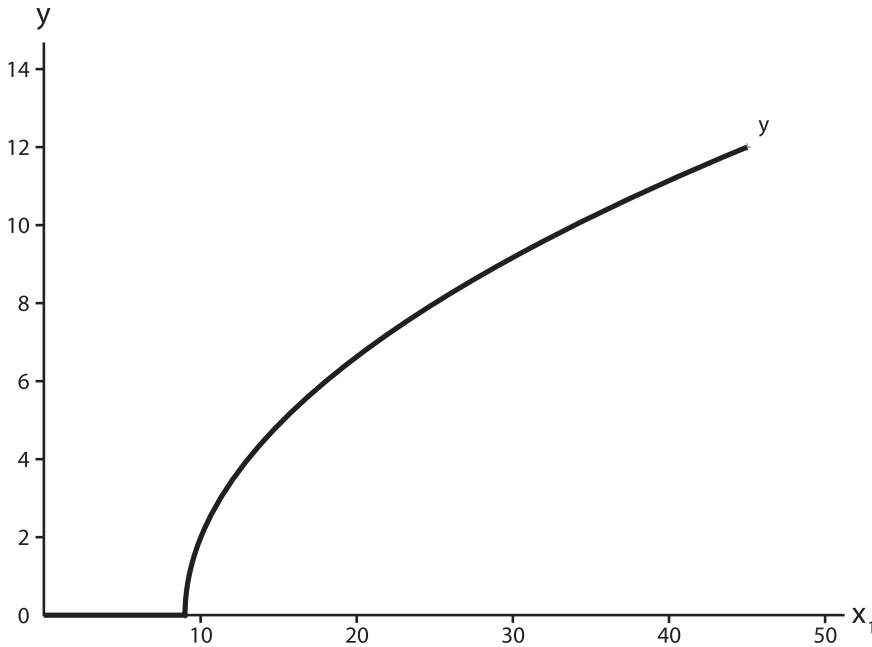


Figure 1. Plot of the Single-Variable-Factor Stone-Geary Production Function with a Threshold Factor Requirement, $y = 2(x_1 - 9)^{1/2}$ for $x_1 > 9$

the sign of a_1 is negative, we hereafter call that a “gratis threshold.” The term *gratis* seems apropos in the case of nitrogen, whether the “free” plant-available nitrogen in the present production period is from Mother Nature (fertile soil or mineralization during the course of the growing season) or from carryover nitrogen from fertilization in a previous production period.

3. Empirical Support

The empirical validity of the threshold factor idea is readily seen for the case of irrigation water for crop production in the desert Southwest region of the United States. During the late 1960s and early 1970s, Hexem and Heady (1978) in collaboration with numerous agronomists and irrigation specialists conducted extensive field experiments involving crop (corn, corn silage, wheat, cotton, and sugar beets) response to varying irrigation water and nitrogen fertilization rates at 13 different agricultural experiment stations in Arizona, California, Colorado, Kansas, and Texas. In all, this massive project resulted in 52 distinct data sets (Hexem, Heady, and Caglar, 1974). Characteristic of Heady’s voluminous agricultural production function work, he and his coauthors estimated parameters for alternative quadratic polynomial and 1/2 and 3/2 power (quasi-polynomial) functional forms to the data.

Table 1. Descriptive Statistics of Variables

Experiment Station/Crop	Year(s)	Variable ^a	Number of Observations	Sample Statistics			
				Mean	Standard Deviation	Minimum	Maximum
Shafter, California/ cotton	1967–1969	Water	74	30	9	15	45
		Nitrogen	74	124	77	0	250
		Yield	74	883	199	243	1,169
Yuma, Arizona/wheat	1970–1971	Water	110	30	7	21	48
		Nitrogen	110	151	95	0	300
		Yield	110	4,335	995	2,154	6,578

^a Water is measured in acre-inches, and nitrogen is measured in pounds per acre. Cotton yield is measured in pounds of lint per acre, and wheat yield is measured in pounds of wheat per acre. Because the Stone-Geary production function requires nonzero values for inputs, 1 was added to all nitrogen values in the estimations.

For purposes of this study, we fit two different variants of a Stone-Geary model to two of the Hexem-Heady desert Southwest data sets—cotton at Shafter, California, and wheat at Yuma (Valley), Arizona. In both cases, we took advantage of pooling multiple year data sets as the crop, experimental design, and experimental site was the same across time (see [Table 1](#)). Yearly dummies were included to capture otherwise unaccounted for differences between years (A_{1968} and A_{1969} for cotton at Shafter; A_{1971} for wheat at Yuma). Of importance for our purpose—ascertaining the threshold level of water that is essential for positive yield—is the fact that the total water applied included preplant irrigation water applied and any rainfall in excess of one-quarter of an inch per occurrence during the growing season.

We used nonlinear least squares estimation, given that the Stone-Geary model is nonlinear in parameters. Columns 2 and 3 of [Table 2](#) (water threshold only) are results of particular interest in demonstrating the viability of the Stone-Geary model in capturing the threshold input phenomenon. The empirical results are encouraging. Both base-year A -coefficient estimates are positive and statistically significant at the 1% level. All of the individual factor exponent estimates (b_i) have the expected positive signs, and all have magnitudes in the required $0 < b_i < 1$ range for diminishing marginal productivity. Further, the $0 < b_1 + b_2 < 1$ restriction for strict concavity for the two-variable-factor, short-run model is met. Three of the four exponent coefficient estimates are significant at the 1% level (the exception being the b_2 coefficient [nitrogen] for cotton at Shafter). Finally, and most important for demonstrating the empirical viability of the threshold factor idea, both a_1 estimates are positive and strongly significant (at the 1% level).

Table 2. Nonlinear Least Squares Estimates of Stone-Geary Production Functions

Coefficient	With Water Threshold		With Water and Nitrogen Thresholds	
	Estimate	Standard Error	Estimate	Standard Error
Cotton: Shafter, California				
A	538.3257***	67.7361	375.2981	761.9000
A_{1968}	0.1584***	0.0416	0.1584***	0.0416
A_{1969}	0.0551	0.0461	0.0514	0.0472
a_1	14.6610***	0.3776	14.6714***	0.3701
a_2			-120.8350	843.1000
b_1	0.1549***	0.0403	0.1538***	0.0401
b_2	0.0110	0.0103	0.0754	0.3185
Observations	74		74	
R-square	0.7202		0.7246	
Wheat: Yuma, Arizona				
A	735.2464***	275.2000	581.0495**	222.8000
A_{1971}	0.1585***	0.0302	0.1787***	0.0310
a_1	14.8443***	2.4096	15.4117***	2.1727
a_2			-19.2486	21.4532
b_1	0.5272***	0.1034	0.5002***	0.0949
b_2	0.0570***	0.0071	0.1165***	0.0403
Observations	110		110	
R-square	0.7638		0.7763	

Notes: Asterisks (*, **, and ***) indicate significance at the 10%, 5%, and 1% levels, respectively. The complete empirical model for the Stone-Geary with two thresholds for cotton in Shafter, California, is $y = Ae^{A_{1968}D_{1968}}e^{A_{1969}D_{1969}}(x_1 - a_1)^{b_1}(x_2 - a_2)^{b_2}$, where D_{1968} is a dummy variable for the year 1968, D_{1969} is a dummy variable for the year 1969, x_1 is quantity of water, and x_2 is quantity of applied nitrogen. The empirical model for wheat is similarly defined.

The last two columns of Table 2 show results for a Stone-Geary specification with thresholds for both water and nitrogen. Initially, we did not consider a “threshold” for nitrogen in our modeling because in most fertilizer production-function applications one finds that a positive yield (a positive y-axis intercept) is obtained even when the fertilizer application rate is zero (a gratis threshold). This is attributable to naturally occurring plant-available nitrogen via agronomic nitrogen fixation prior to and during the course of the growing season. Nitrogen fixation, the conversion of N_2 to plant-available N, is an ongoing process during the course of a growing season owing to microbial fixation (mineralization) in the soil and lightning and rain events (Allison, 1955; Brady and Weil, 2010; Stanford and Smith, 1972). The upshot is that applied (fertilizer) nitrogen represents only a partial accounting of the actual nitrogen that is available for plant growth during the course of a growing season, even when one includes, in measured N, preplant nitrogen estimates determined by soil testing.

This generalization of the Stone-Geary specification for firm-level production function modeling provides a way to parsimoniously deal with the unaccounted for (unmeasured/gratis) portion of an input. What one would hypothesize in

such instances is that the threshold coefficient would have a negative rather than positive sign. As expected, that is what we found (see last two columns of Table 2). In both applications, the nitrogen threshold coefficient, a_2 , is negative, although not significant. The fact that the gratis threshold for N is not significant is not particularly troubling. Although some N (specifically N that is mineralized during the course of the growing season) is unaccounted for in measured N, it is probably in most instances not a relatively great amount.

We believe these results provide compelling evidence that a threshold level of water necessary for positive yield clearly exists, at least in the desert Southwest—somewhere in the neighborhood of 15 acre-inches in our applications. It is our hypothesis that if our Stone-Geary model were fitted to other agricultural (and for that matter nonagricultural) production data sets, empirical evidence would mount for the threshold factor idea needing to be an important consideration for improved production function modeling for many, if not most, applications.

4. Summary and Conclusions

This article proposes and explores the implications of the Stone-Geary utility function as a production function model. The allowance for the possibility of threshold factor levels is theoretically compelling. The empirical support for a threshold factor level for irrigation water for crop production in the desert Southwest region of the United States is encouraging. Our empirical results, although less convincingly so, also suggest the possibility of a gratis threshold for nitrogen.

Also, as demonstrated in the Appendix, a Stone-Geary production function gives rise to an easily tractable variable cost function with U-shaped average variable cost. This pedagogical advantage enables a coherent presentation of production theory—consistency of input-side (factor demand) and output-side (product supply) analyses—without the unwieldy and unnecessary distractions of U-shaped marginal cost. It is our belief that the theoretical simplicity and empirical parsimony of the Stone-Geary model for accommodating factor thresholds for firm-level production modeling holds much promise for applied research and teaching in agricultural and resource economics.

References

- Allison, F.E. “The Enigma of Soil Nitrogen Balance Sheets.” *Advances in Agronomy*. A.G. Norman, ed. New York: Academic Press, 1955.
- Beattie, B.R., and M. Almarri. “Production Functions and Cost Curves: Why the Preoccupation with U-shaped Marginal and Average Cost?” *Readings in Production and Consumption Economics: Collected Papers of B.R. Beattie and Friends*. B.R. Beattie, ed. Tucson, AZ: Department of Agricultural and Resource Economics, University of Arizona, 2011.

- Beattie, B.R., M.T. Holt, and M.J. Watts. "On the Function Coefficient, Euler's Theorem, and Homogeneity in Production Theory." *Review of Agricultural Economics* 24,1(2002):240–49.
- Black, J.D. *Introduction to Production Economics*. New York: Henry Holt, 1926.
- Brady, N.C., and R.R. Weil. *Elements of the Nature and Properties of Soils*. 3rd ed. Upper Saddle River, NJ: Pearson Prentice Hall, 2010.
- Geary, R.C. "A Note on 'A Constant-Utility Index of the Cost of Living.'" *Review of Economic Studies* 18,1(1950):65–66.
- Heady, E.O. *Economics of Agricultural Production and Resource Use*. New York: Prentice Hall, 1952.
- Hexem, R.W., and E.O. Heady. *Water Production Functions for Irrigated Agriculture*. Ames: Iowa State University Press, 1978.
- Hexem, R.W., E.O. Heady, and M. Caglar. *A Compendium of Experimental Data for Corn, Wheat, Cotton and Sugar Beets Grown at Selected Sites in the Western United States and Alternative Production Functions Fitted to These Data*. Ames: Iowa State University, Center for Agricultural and Rural Development, 1974.
- Kim, H.Y. "Aggregation over Firms and Flexible Functional Forms." *Economic Record* 81, 252(2005):19–29.
- Neary, J.P. "R.C. Geary's Contributions to Economic Theory." R.C. Geary, 1896–1983: *Irish Statistician*. D. Conniffe, ed. Dublin: Oak Tree Press, 1997.
- Samuelson, P.A. "Some Implications of 'Linearity.'" *Review of Economic Studies* 15(1947–1948):88–90.
- Shioji, E. "Time Varying Effects of Public Investment and a Stone-Geary Production Technology." Working paper, Hitotsubashi University, Tokyo, Japan, 2012.
- Smith, V.K., and J.A. Espinosa. "Environmental and Trade Policies: Some Methodological Lessons." Discussion paper 96–18, Washington, DC: Resources for the Future, April 1996.
- Spillman, W.J. "Application of the Law of Diminishing Returns to Some Fertilizer and Feed Data." *Journal of Farm Economics* 5(1923):36–52.
- Spillman, W.J., and E. Lang. *The Law of Diminishing Returns*. Yonkers-on-Hudson, NY: World Book Company, 1924.
- Stanford, G., and S.J. Smith. "Nitrogen Mineralization Potentials of Soils." *Soil Science Society of America Journal* 36,3(1972):465–72.
- Stone, R. "Linear Expenditure Systems and Demand Analysis: An Application to the Pattern of British Demand." *Economic Journal* 64(September 1954):511–27.

Appendix

In the first section of this pedagogical appendix, we demonstrate the advantage of the Stone-Geary model for enabling a tractable variable cost function with U-shaped average variable cost from the underlying production function. The second section presents the Stone-Geary functional forms for conditional and ordinary factor demand and for product supply.

Tractable Variable Cost

Often in teaching principles and intermediate microeconomics, the (short-run) variable cost (VC) function is characterized as an elongated (stretched-out) backward

S with associated U-shaped marginal cost (MC) and average variable cost (AVC) curves. Although we have no quarrel with such textbook presentations, we believe the suggestion (even if only implicit) that U-shaped MC is “typical” should be tempered. At a minimum, a caveat should be offered noting that most of the tractable production function models espoused by economists are not sufficiently flexible to enable U-shaped MC (Beattie and Almarri, 2011). Finally, to make matters worse, the mathematical specification of production function models consistent with U-shaped MC are sufficiently complex that getting from the production function to the VC function is generally intractable.

However, U-shaped AVC is necessary for development of the twin ideas of short-run shutdown and truncated supply for product prices less than minimum AVC as total revenue is insufficient to cover variable costs. An attractive feature of a Stone-Geary production function is that its associated AVC curve is U-shaped without the complication of U-shaped MC. For the single-variable-factor, short-run case and assuming perfect competition in the factor market, the variable-factor-cost equation is

$$c = r_1 x_1, \quad (\text{A-1})$$

where r_1 is the price of x_1 . Taking the inverse of text equation (2), that is, finding $x_1 = f^{-1}(y)$, and substituting into equation (A-1) gives the VC function, namely,

$$\text{VC} = r_1 \left(a_1 + \alpha^{-1/b_1} y^{1/b_1} \right), \quad (\text{A-2})$$

which is plotted in Figure A1 (panel a) for the parameter values used for the plot of Figure 1 and assuming $r_1 = 4$.

The derivative of equation (A-2) yields

$$\text{MC} = d\text{VC}/dy = b_1^{-1} \alpha^{-1/b_1} r_1 y^{(1/b_1)-1} = b_1^{-1} \alpha^{-1/b_1} r_1 y^{(1-b_1)/b_1}. \quad (\text{A-3})$$

Notice that MC is monotonic, emanates from the origin, and increases either at an increasing, a constant, or a decreasing rate depending on whether $b_1 < 1/2$, $=1/2$, $> 1/2$, respectively. In addition,

$$\text{AVC} = \text{VC} \cdot y^{-1} = r_1 y^{-1} \left(a_1 + \alpha^{-1/b_1} y^{1/b_1} \right). \quad (\text{A-4})$$

MC and AVC are shown in panel b of Figure A1. (Linearity of MC is an artifact of choosing $b_1 = 1/2$, giving rise to a quadratic VC function in equation A-4). What we observe in Figure A1 (panel b) is monotonically increasing MC intersecting a U-shaped AVC at its minimum—all that is needed for truncated product supply and short-run shutdown.

The results nicely and easily extend to multiple-variable-factor, short-run cases. The essential algebra for the two-variable-factor case follows:

$$c = r_1 x_1 + r_2 x_2, \quad (\text{A-5})$$

the factor cost equation;

$$y = A (x_1 - a_1)^{b_1} x_2^{b_2}, \quad (\text{A-6})$$

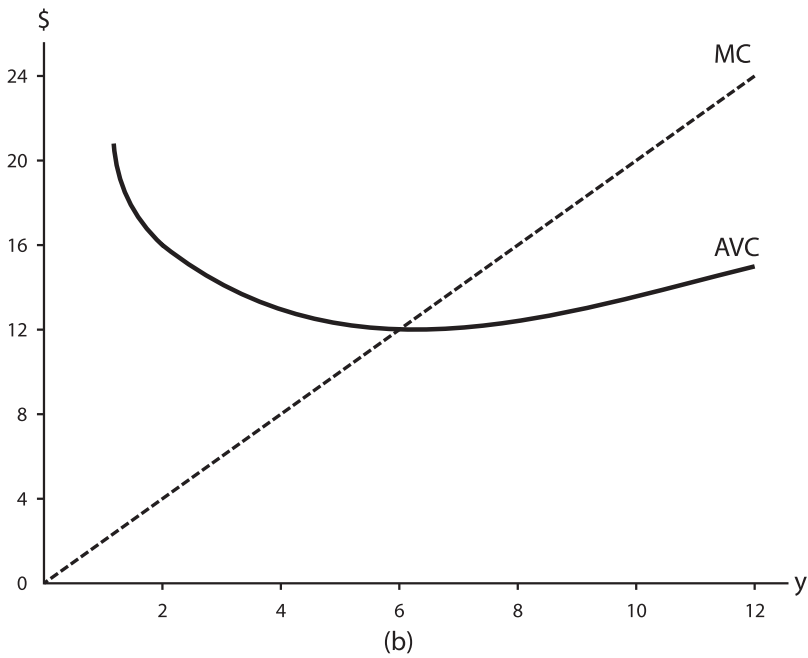
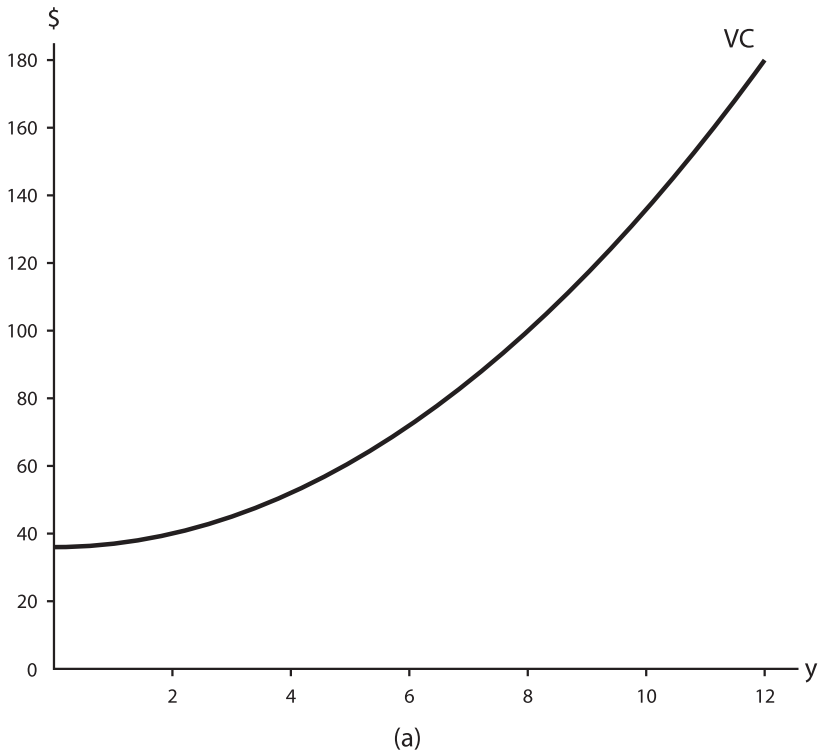


Figure A1. Plot of Variable Cost (VC) and Marginal Cost (MC) and Average Variable Cost (AVC) for the Production Function, $y = 2(x_1 - 9)^{1/2}$ for $x_1 > 9$

the short-run yield/production function (assuming a threshold for x_1 but not for x_2 and at least one suppressed fixed factor); and

$$\frac{f_1}{f_2} = \frac{r_1}{r_2} \Rightarrow x_2 = \frac{b_2 r_1}{b_1 r_2} (x_1 - a_1), \quad (\text{A-7})$$

the expansion path from the cost-minimization problem.

Substituting equation (A-7) into equations (A-5) and (A-6), respectively, to eliminate x_2 gives

$$c = r_1 x_1 + r_2 \frac{b_2 r_1}{b_1 r_2} (x_1 - a_1) = \left(1 + \frac{b_2}{b_1}\right) r_1 x_1 - a_1 \frac{b_2}{b_1} r_1 \quad (\text{A-8})$$

and

$$y = A (x_1 - a_1)^{b_1} \left(\frac{b_2 r_1}{b_1 r_2} (x_1 - a_1)\right)^{b_2}. \quad (\text{A-9})$$

Taking the inverse of equation (A-9) yields

$$x_1 = y^{\frac{1}{b_1+b_2}} A^{-\frac{1}{b_1+b_2}} \left(\frac{b_2 r_1}{b_1 r_2}\right)^{-\frac{b_2}{b_1+b_2}} + a_1. \quad (\text{A-10})$$

Finally, substituting equation (A-10) into equation (A-8) obtains

$$\text{VC} = \left(1 + \frac{b_2}{b_1}\right) r_1 y^{\frac{1}{b_1+b_2}} A^{-\frac{1}{b_1+b_2}} \left(\frac{b_2 r_1}{b_1 r_2}\right)^{-\frac{b_2}{b_1+b_2}} + a_1 \frac{b_2}{b_1} r_1. \quad (\text{A-11})$$

Notice that if $0 < b_1 + b_2 < 1$ as required for concavity of the production function, then the exponent on y will necessarily be > 1 and VC will increase at an increasing rate. Also notice that VC has a positive $\$$ -axis intercept at $a_1 b_1^{-1} b_2 r_1$.

Before considering MC and AVC, simplify equation (A-7) by letting $A = \sqrt{8}$, $a_1 = 9$, and $b_1 = b_2 = 1/4$. Doing so gives

$$\text{VC} = (1/4)r_1^{1/2} r_2^{1/2} y^2 + 9r_1. \quad (\text{A-12})$$

Letting $r_1 = r_2 = 4$, equation (A-12) simplifies to

$$\text{VC} = 36 + y^2. \quad (\text{A-13})$$

Having purposefully selected parameter values different from those chosen for graphing the single-variable-factor case in Figure A1 results in the same VC, MC, and AVC as obtained previously. So, Figure A1 suffices.

We should note that one could obtain a like result (U-shaped AVC) that is similarly quite tractable by simply adding a negative constant term to a quadratic production function or, as we did in an earlier version of this article, adding a single constant term to the Cobb-Douglas. The problem with simply adding a single constant term to either a quadratic or Cobb-Douglas is that what one ends up with is a hodgepodge threshold effect that somehow applies across the board to all the inputs. The Stone-Geary formulation is preferable in that it enables us to sort out the threshold effect(s) and properly attribute it (them) to the appropriate factor(s). Indeed, as demonstrated in the empirical applications in the main text, we see that “thresholds” for some factors may in fact not be thresholds at all, but rather gratis thresholds or less than

fully accounted for input effects. Certainly, for some (perhaps most) inputs, we might correctly presume no threshold effect at all. A single additive constant term unnaturally and undesirably muddles all such effects together.

Stone-Geary Factor Demand and Product Supply Functions

Assume two variable factors—both with threshold possibilities—and one fixed factor as given in text equation (1):

$$y = \begin{cases} 0 & \text{for } x_1 \leq a_1 \text{ or } x_2 \leq a_2 \\ A(x_1 - a_1)^{b_1}(x_2 - a_2)^{b_2}x_3^{b_3} & \text{otherwise.} \end{cases} \tag{A-14}$$

The conditional (cost-minimizing) factor demand functions are as follows:

$$x_1^c = A^{-1/(b_1+b_2)}b_1^{b_2/(b_1+b_2)}b_2^{-b_2/(b_1+b_2)}r_1^{-b_2/(b_1+b_2)}r_2^{b_2/(b_1+b_2)}x_3^{-b_3/(b_1+b_2)}y^{1/(b_1+b_2)} + a_1 \tag{A-15}$$

$$x_2^c = A^{-1/(b_1+b_2)}b_1^{-b_1/(b_1+b_2)}b_2^{b_1/(b_1+b_2)}r_1^{b_1/(b_1+b_2)}r_2^{-b_1/(b_1+b_2)}x_3^{-b_3/(b_1+b_2)}y^{1/(b_1+b_2)} + a_2. \tag{A-16}$$

Ordinary (profit-maximizing) factor demand and product supply functions are the following:

$$x_1^* = A^{-1/\alpha}b_1^{(b_2-1)/\alpha}b_2^{-b_2/\alpha}r_1^{(1-b_2)/\alpha}r_2^{b_2/\alpha}p^{-1/\alpha}x_3^{-b_3/\alpha} + a_1 \tag{A-17}$$

$$x_2^* = A^{-1/\alpha}b_1^{-b_1/\alpha}b_2^{(b_1-1)/\alpha}r_1^{b_1/\alpha}r_2^{(1-b_1)/\alpha}p^{-1/\alpha}x_3^{-b_3/\alpha} + a_2 \tag{A-18}$$

$$y^* = A^{-1/\alpha}b_1^{-1/\alpha}b_2^{-1/\alpha}r_1^{b_1/\alpha}r_2^{b_2/\alpha}p^{-(b_1+b_2)/\alpha}x_3^{-b_3/\alpha}, \tag{A-19}$$

where $\alpha = b_1 + b_2 - 1 < 0$ for strict concavity of production function.

Given strict quasi-concavity ($b_1 + b_2 > 0$) for conditional factor demand and strict concavity ($0 < b_1 + b_2 < 1$) for ordinary factor demand and product supply, it is easily confirmed that the previous functions satisfy the usual expected homogeneity and comparative static properties.

As discussed in the previous section, because the Stone-Geary model affords U-shaped AVC, the product supply function in equation (A-19) does not hold for all $r_1, r_2, p > 0$. That is, the supply function is truncated where product price is less than minimum AVC as net returns exclusive of fixed cost (TR – VC) would be negative. The algebra for establishing the truncation point in general is onerous, but quite manageable if one chooses convenient numerical values for the production function parameters (A, a_1, a_2, b_1, b_2) and the fixed factor x_3 level. Using the same numerical values for those parameters as previously, that is, $A = \sqrt{8}, a_1 = 9, a_2 = 0, b_1 = b_2 = 1/4$, and setting $x_3 = 1$, the truncation point for equation (A-19) is

$$p \geq 3r_1^{3/4}r_2^{1/4}. \tag{A-20}$$

Similarly, the ordinary factor demand curve truncation points for x_1^* and x_2^* given the same production function parameter values and fixed factor level as previously are easily established by solving equation (A-20) for the upper-bound r_1 and r_2 level, respectively.