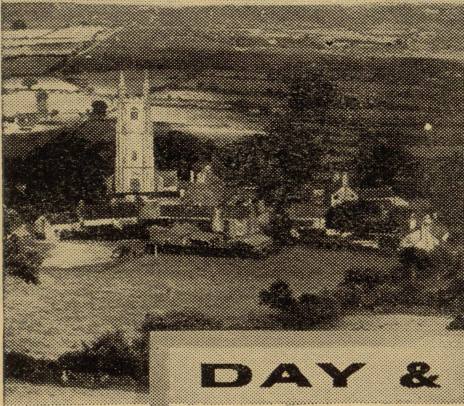


SELECTIVE sedation



DAY & NIGHT

For each individual patient who is in need of sedation or hypnosis, there is a LILLY barbiturate that meets the requirements exactly.

'Seconal Sodium'

When rapid action yet brief duration is called for.

'Sodium Amytal'

For routine sedation in the anxiety case.

'Tuinal'

In the chronic insomnia case.

'Amytal'

Sedation in the hypertensive, peptic ulcer, skin or cardiac case.

Let it be a *Lilly* barbiturate

ELI LILLY & COMPANY LIMITED, BASINGSTOKE, ENGLAND

JOURNAL OF MENTAL SCIENCE

CONTENTS FOR JULY, 1957

Original Articles—	PAGE
The Classification of Schizophrenia; by <i>F. J. Fish, M.B., M.R.C.P., D.P.M.</i>	443
Rauwolfia Alkaloids and Reserpine in the Treatment of the Chronic Psychotic Patient; by <i>Charmian Elkes, M.B., B.S.(Lond.)</i>	464
Size Constancy in Schizophrenic Patients; by <i>T. E. Weckowicz, M.B., Ch.B., D.P.M.</i>	475
The Use of Children's Drawings in Clinical Diagnosis; by <i>W. Mary Burbury, M.A., M.B., B.S., D.P.M.</i>	487
Some Observations on Huntington's Chorea; by <i>A. D. Forrest, M.B., Ch.B., M.R.C.P., D.P.M.</i>	507
Psychometric Aspects of Homosexuality; by <i>T. G. Grygier, B.Sc., LL.M., Ph.D., F.B.Ps.S.</i>	514
The Sexual Behaviour of Young Criminals; by <i>T. C. N. Gibbens, M.D., D.P.M.</i>	527
A Technique for the Objective Assessment of the Child's Family Relationships; by <i>E. J. Anthony, M.D., B.Sc., D.P.M., and Eva Bene, Ph.D., M.A.</i>	541
A Further Experimental Study of Using Perceptual Errors as an Aid to Diagnosis; by <i>D. Walton, B.A., Dip.Psych.(Lond.)</i>	556
Meprobamate in the Treatment of Tension States; by <i>G. C. Heller, M.D., D. Walton, B.A., Dip.Psych.(Lond.), and D. A. Black, B.A.</i>	581
Folie à Deux—a Case of Folie Imposée à Quatre and à Trois; by <i>D. H. Ropschitz, M.D., D.P.M.</i>	589
The Stabilizing Effect of Occupational Therapy on Chronic Psychotics with a Tendency to Aggressive Forms of Behaviour; by <i>A. A. Robin, M.B., Ch.B., D.P.M.</i>	597
The Efficacy of Parentrovite in the Treatment of a Group of Senile Psychotics; by <i>J. A. Krawiecki, M.B., Ch.B., D.P.M., L. Couper, M.B., Ch.B., D.P.M., and D. Walton, B.A., Dip.Psych.(Lond.)</i>	601
Megaloblastic Anaemia Occurring during Treatment of Epilepsy with Phenytoin Sodium, Primidone and Phenobarbitone; by <i>Robin C. Benians, M.B., B.Ch.(Cantab.), and Richard A. Hunter, M.D.(Lond.), M.R.C.P., D.P.M.</i>	606
The Effects of Pacatal on Chronic Mental Illness; by <i>R. W. Simpson, M.D., D.P.M.</i>	610
Indole Excretion Patterns during Treatment with Reserpine; by <i>A. D. Forrest, M.B., Ch.B., M.R.C.P., D.P.M.</i>	614
The Information Capacity of Young Mental Defectives in an Assembly Task; by <i>John Annett</i>	621
The Minnesota Multiphasic Personality Inventory in Recidivist Prisoners; by <i>J. K. W. Morrice, M.D., D.P.M.</i>	632
The Use of Arfonad for the Alleviation of Cardio-Vascular Stress following Electro-Convulsive Therapy; by <i>G. I. Tewfik, M.D., D.P.M., and B. G. Wells, M.D., M.R.C.P.</i>	636
Drugs and Personality—II. The Effect of Stimulant and Depressant Drugs on Continuous Work; by <i>H. J. Eysenck, S. Casey and D. S. Trouton</i>	645
Drugs and Personality—III. The Effects of Stimulant and Depressant Drugs on Visual After-Effects; by <i>H. J. Eysenck, H. Holland and D. S. Trouton</i>	650
Drugs and Personality—IV. The Effects of Stimulant and Depressant Drugs on the Rate of Fluctuation of a Reversible Perspective Figure; by <i>H. J. Eysenck, H. Holland and D. S. Trouton</i>	656
Drugs and Personality—V. The Effects of Stimulant and Depressant Drugs on the Suppression of the Primary Visual Stimulus; by <i>H. J. Eysenck and S. Aiba</i>	661
Conflict Avoidance in Obsessionals and Hysterics, and the Validity of the Concept of Dysthymia; by <i>Vernon Hamilton, B.A., Ph.D., Dip.Psych.</i>	666
A Clinical Trial with Hydroxyzine (Atarax) on a Group of Maladjusted Educationally Subnormal Children; by <i>Leslie J. Segal, M.R.C.S., L.R.C.P., with A. E. Tansley, B.Sc., M.Ed.</i>	677
Bibliography and Epitome	682