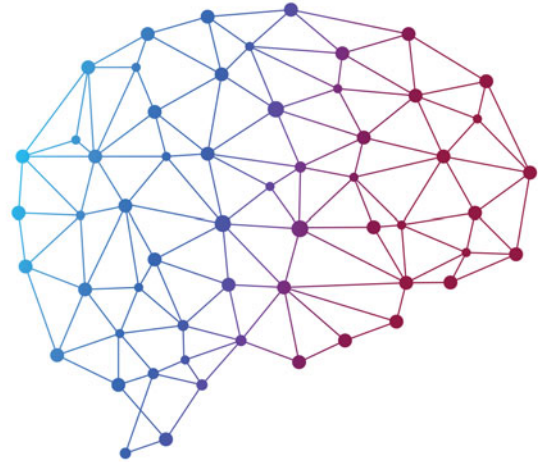


## Call for New Submission Proposals

*BJPsych Advances* invites clinical experts to submit proposals for journal content in all areas of psychiatry. The journal would particularly welcome proposals in the areas of addictions, ethics, liaison psychiatry, perinatal psychiatry, neuropsychiatry, rehabilitation and social.

Submissions should be educational pieces aimed at CPD for consultant psychiatrists. *BJPsych Advances* does not publish research or systematic review papers.



Learn more here  
[cambridge.org/BJA](https://cambridge.org/BJA)



CAMBRIDGE  
UNIVERSITY PRESS

## Call for Submission Proposals | Liaison Psychiatry

*BJPsych Advances* invites clinical experts to submit proposals for a forthcoming special issue relating to Liaison Psychiatry. Submissions should be educational pieces aimed at continuing professional development (CPD) for consultant psychiatrists.

### The Liaison Psychiatry Special Issue will be edited by:

Professor Asit Biswas, Editor-in-Chief  
Dr Sergio Covarrubias-Castillo  
Professor Gian Galeazzi



Learn more here  
[cambridge.org/BJA](https://cambridge.org/BJA)



CAMBRIDGE  
UNIVERSITY PRESS



### CPD eLearning

329 **New from CPD eLearning**

### Editorial

330 **The importance of being expert**

Shubulade Smith

332 **The history of the Grange Annual Conference**

Keith Rix

### Clinical Reflection

335 **The expert witness: a brief evolutionary history**

Asit B. Biswas and Patricia Casey

### Articles

338 **Expert evidence: dangers and the enhancement of reasoning**

Peter Charleton and Ivan Rakhmanin

346 **Lessons for expert psychiatric witnesses from recent judgments and updated procedural rules**

Abiha Bhatti and Keith Rix

357 **Criminal intent and psychiatric evidence**

Nicholas Hallett, Akinkunmi Odutola, Tony Storey and Natalie Wortley

368 **Expert psychiatric reports for the Parole Board for England and Wales**

Laura Middleton, Lynne Daly and Rajan Nathan

377 **Testamentary capacity**

Alistair Burns, Hugh Series, James Warner, Andrew Bishop and James McKean

383 **Assessment and diagnosis of post-traumatic stress disorders (PTSDs) for medico-legal and other clinical purposes: DSM-5-TR PTSD, ICD-11 PTSD and ICD-11 complex PTSD**

Andy P. Siddaway

### Commentary

398 **Navigating the complexities of post-traumatic stress disorder and its variants**

David Trickey

401 **CR193: a framework of knowledge and support for expert witnesses**

Duncan Harding

### Clinical Reflection

403 **The treating psychiatrist as expert witness**

Trevor Broughton and Toral Thomas

406 **Medico-legal psychiatric assessments in the age of video-linking**

James Briscoe

### Articles

410 **The role of neurocognitive testing in the assessment of fitness to stand trial**

Alistair Burns and Hugh Series

414 **Psychiatric evidence in UK immigration and asylum cases**

Nuwan Galappathie

### Commentary

422 **Psychiatric evidence in immigration and asylum cases – a tale of two experts**

Keith Rix

### Memory Lane

425 **Medical Aspects of Crime by Sir William Norwood East, 1936**

John Gunn

The content of this special issue of BJPsych Advances reflects the content of The Grange Conference programmes and we are grateful to the following past speakers for contributing to it: Dr James Briscoe, Professor Alistair Burns CBE, The Hon Mr Justice Peter Charleton, Professor John Gunn CBE, Dr Nicholas Hallett, Professor Rajan Nathan, Professor Keith Rix and Dr Natalie Wortley.

### Cover image

*Photo credits, clockwise from top*

© Cecillie\_Arcurs, Getty Images

© Dr Keith Rix

© Caia Image, Getty Images

© Lisa5201, Getty Images

© GaudiLab, Shutterstock

© Compassionate Eye Foundation/

Mark Langridge, Getty Images

© Chris Chambers

© Robert Daly, Getty Images

<https://www.cambridge.org/core/journals/bjpsych-advances>

ISSN 2056-4678

